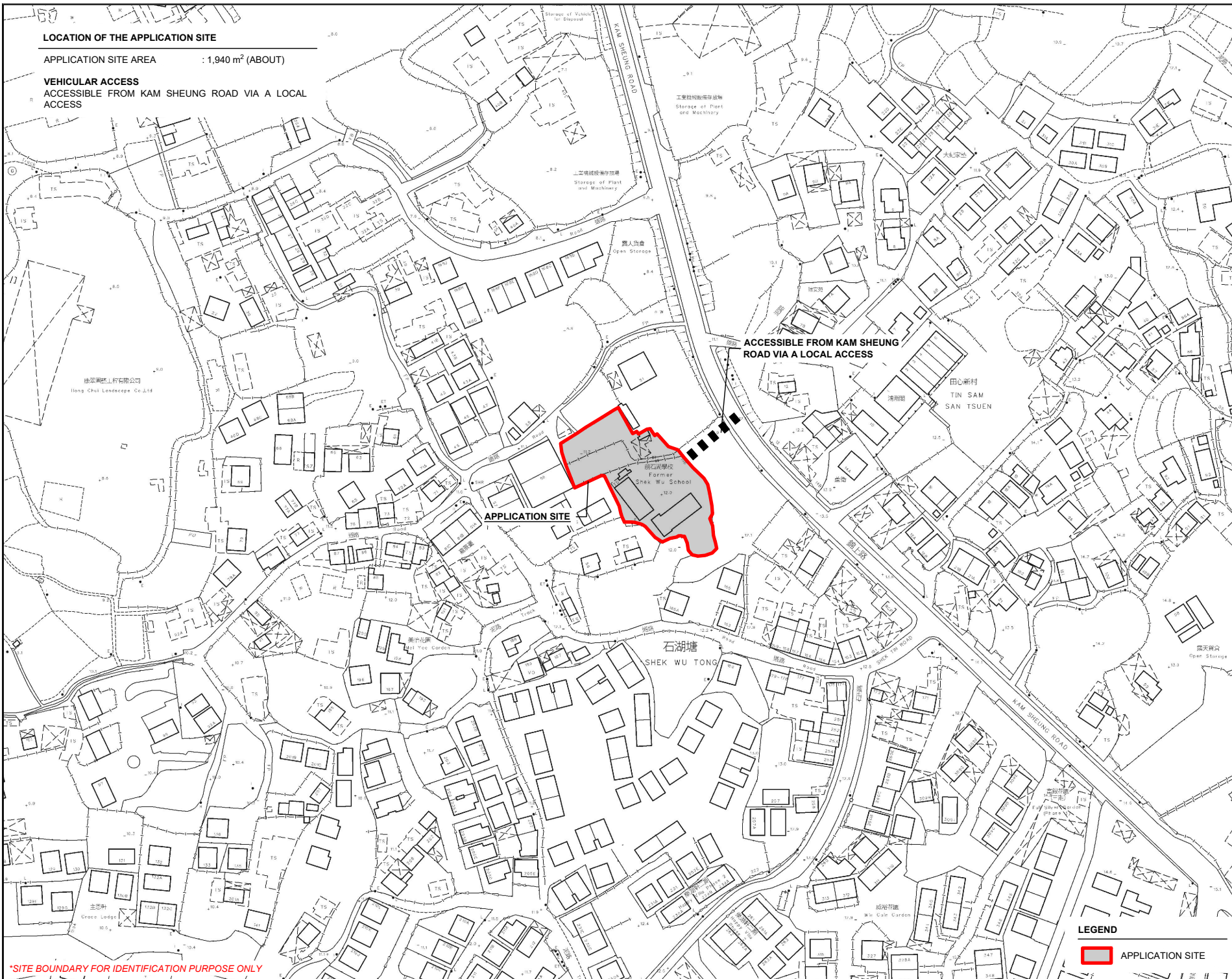
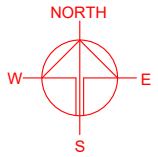


LOCATION OF THE APPLICATION SITE

APPLICATION SITE AREA : 1,940 m² (ABOUT)

VEHICULAR ACCESS
ACCESSIBLE FROM KAM SHEUNG ROAD VIA A LOCAL ACCESS



*SITE BOUNDARY FOR IDENTIFICATION PURPOSE ONLY

PLANNING CONSULTANT



PROJECT

PROPOSED TEMPORARY PLACE OF RECREATION, SPORTS OR CULTURE WITH ANCILLARY FACILITIES FOR A PERIOD OF 5 YEARS

SITE LOCATION

LOTS 2063 AND 2064 IN D.D. 106 AND ADJOINING GOVERNMENT LAND, KAM TIN, YUEN LONG, NEW TERRITORIES

(FORMER SHEK WU SCHOOL)

SCALE
1 : 2000 @ A4

DRAWN BY: MN DATE: 20.6.2024

REVISED BY: DATE:

APPROVED BY: DATE:

LEGEND

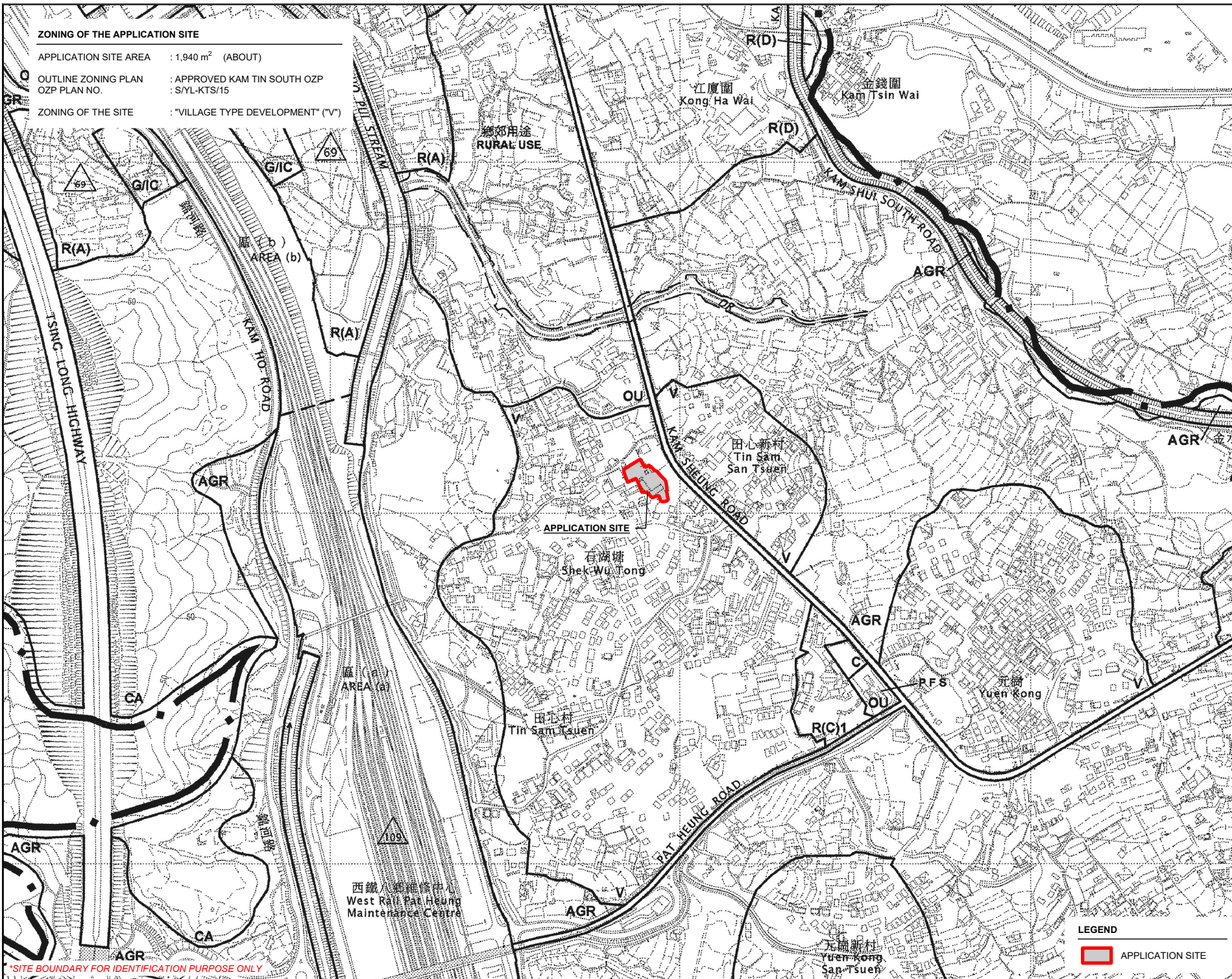
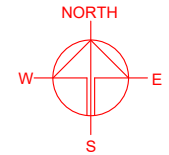
APPLICATION SITE

DWG. TITLE
LOCATION PLAN

DWG. NO. PLAN 1 VER. 001

ZONING OF THE APPLICATION SITE

APPLICATION SITE AREA : 1,940 m² (ABOUT)
 OUTLINE ZONING PLAN : APPROVED KAM TIN SOUTH OZP
 OZP PLAN NO. : S/YL-KTS/15
 ZONING OF THE SITE : "VILLAGE TYPE DEVELOPMENT" ("V")



*SITE BOUNDARY FOR IDENTIFICATION PURPOSE ONLY

LEGEND

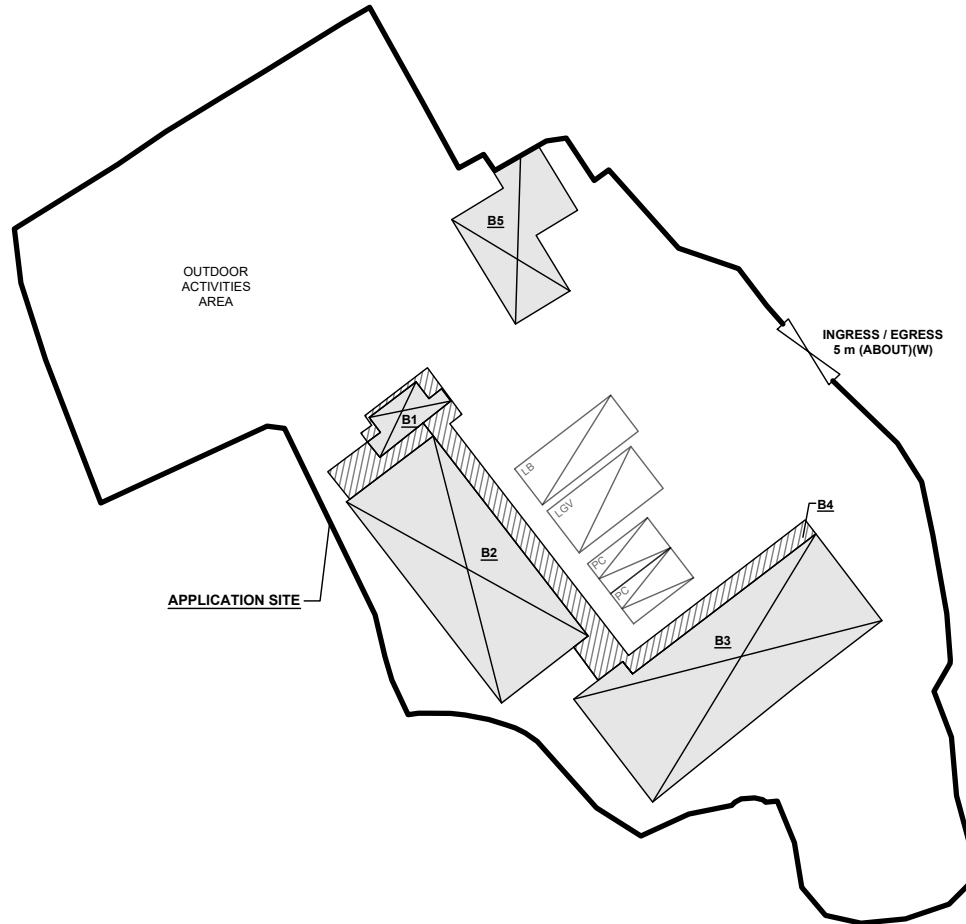
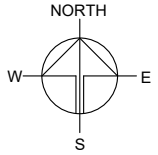
APPLICATION SITE

PLANNING CONSULTANT	
PROJECT	
PROPOSED TEMPORARY PLACE OF RECREATION, SPORTS OR CULTURE WITH ANCILLARY FACILITIES FOR A PERIOD OF 5 YEARS	
SITE LOCATION	
LOTS 2063 AND 2064 IN D.D. 106 AND ADJOINING GOVERNMENT LAND, KAM TIN, YUEN LONG, NEW TERRITORIES (FORMER SHEK WU SCHOOL)	
SCALE	
1 : 7000 @ A4	
DRAWN BY	DATE
MN	20.6.2024
REVISED BY	DATE
APPROVED BY	DATE
DWG. TITLE	
ZONING OF THE SITE	
DWG. NO.	VER.
PLAN 2	001

DEVELOPMENT PARAMETERS

APPLICATION SITE AREA	: 1,940 m ²	(ABOUT)
COVERED AREA	: 394 m ²	(ABOUT)
UNCOVERED AREA	: 1,546 m ²	(ABOUT)
PLOT RATIO	: 0.2	(ABOUT)
SITE COVERAGE	: 20 %	(ABOUT)
NO. OF STRUCTURE	: 5	
DOMESTIC GFA	: NOT APPLICABLE	
NON-DOMESTIC GFA	: 394 m ²	(ABOUT)
TOTAL GFA	: 394 m ²	(ABOUT)
BUILDING HEIGHT	: 3 m - 6 m	(ABOUT)
NO. OF STOREY	: 1	

STRUCTURE	USE	COVERED AREA	GROSS FLOOR AREA	BUILDING HEIGHT
B1	WASHROOM AND STORE ROOM	12m ² (ABOUT)	12 m ² (ABOUT)	3 m (ABOUT)(1-STOREY)
B2	YOUTH ACTIVITY CENTRE	121 m ² (ABOUT)	121 m ² (ABOUT)	6 m (ABOUT)(1-STOREY)
B3	ELDERLY ACTIVITY CENTRE, OFFICE	146 m ² (ABOUT)	146 m ² (ABOUT)	6 m (ABOUT)(1-STOREY)
B4	COVERED CORRIDOR	65 m ² (ABOUT)	65 m ² (ABOUT)	3 m (ABOUT)(1-STOREY)
B5	WASHROOM AND REFRESHMENT KIOSK	50 m ² (ABOUT)	50 m ² (ABOUT)	3 m (ABOUT)(1-STOREY)
TOTAL		394 m² (ABOUT)	394 m² (ABOUT)	



PARKING AND LOADING / UNLOADING PROVISIONS

NO. OF PRIVATE CAR PARKING SPACE	: 2
DIMENSION OF PARKING SPACE	: 5 m (L) x 2.5 m (W)
NO. OF L/UL SPACE FOR LIGHT GOODS VEHICLE	: 1
DIMENSION OF L/UL SPACE	: 7 m (L) x 3.5 m (W)
NO. OF L/UL SPACE FOR LIGHT BUS	: 1
DIMENSION OF L/UL SPACE	: 8 m (L) x 3 m (W)

LEGEND

- APPLICATION SITE
- STRUCTURE (ENCLOSED)
- STRUCTURE (NOT ENCLOSED)
- PARKING SPACE (PC)
- LOADING / UNLOADING SPACE (LGV)
- LOADING / UNLOADING SPACE (LB)
- INGRESS / EGRESS

PLANNING CONSULTANT



PROJECT

PROPOSED TEMPORARY PLACE OF RECREATION, SPORTS OR CULTURE WITH ANCILLARY FACILITIES FOR A PERIOD OF 5 YEARS

SITE LOCATION

LOTS 2063 AND 2064 IN D.D. 106 AND ADJOINING GOVERNMENT LAND, KAM TIN, YUEN LONG, NEW TERRITORIES
(FORMER SHEK WU SCHOOL)

SCALE

1 : 500 @ A4

DRAWN BY	DATE
MN	20.6.2024

REVISED BY	DATE

APPROVED BY	DATE

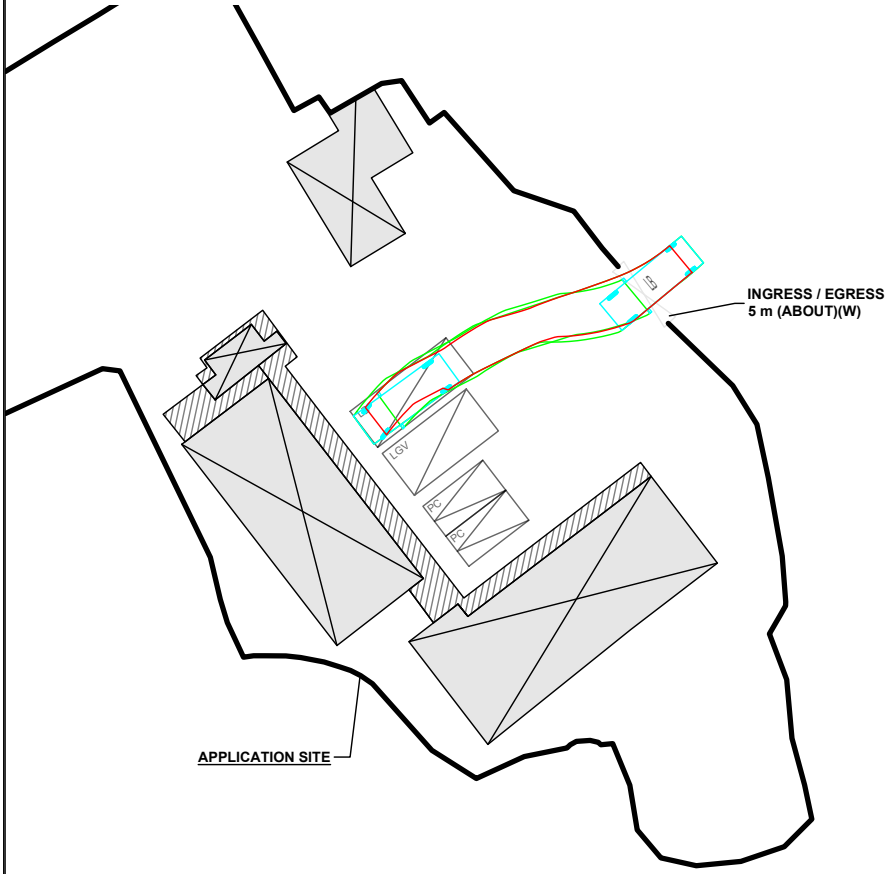
DWG. TITLE
LAYOUT PLAN

DWG NO.	VER.
PLAN 4	001

SWEPT PATH ANALYSIS

TYPE OF VEHICLE : LIGHT BUS
 DIMENSION OF VEHICLE : 2.3 m (W) X 7 m (L)

SWEPT PATHS GENERATED BY AUTODESK VEHICLE TRACKING

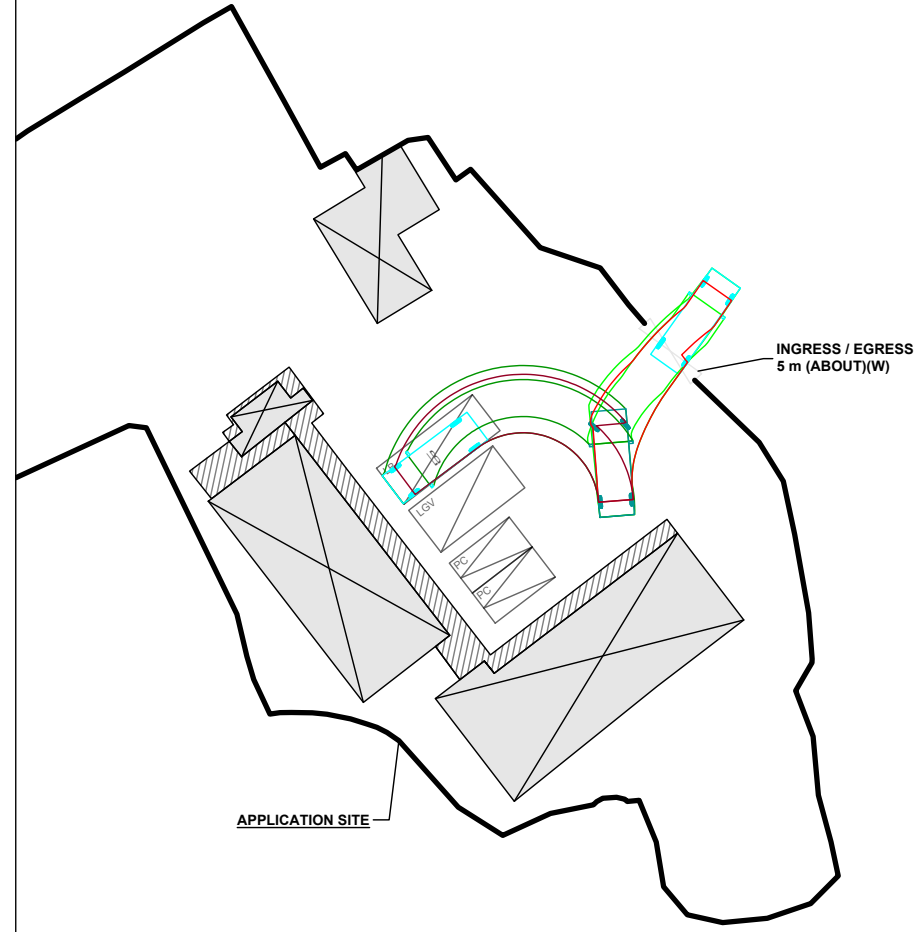


APPLICATION SITE

INGRESS / EGRESS
5 m (ABOUT)(W)

FROM THE LOCAL ACCESS TO
THE APPLICATION SITE

*SITE BOUNDARY FOR IDENTIFICATION PURPOSE ONLY



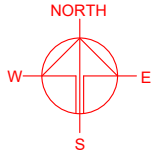
APPLICATION SITE

INGRESS / EGRESS
5 m (ABOUT)(W)

FROM THE APPLICATION SITE
TO THE LOCAL ACCESS

LEGEND

- APPLICATION SITE
- STRUCTURE (ENCLOSED)
- STRUCTURE (NOT ENCLOSED)
- PARKING SPACE (PC)
- LOADING / UNLOADING SPACE (LGV)
- LOADING / UNLOADING SPACE (LB)
- INGRESS / EGRESS
- LIGHT BUS
- SWEEP PATH OF LIGHT BUS



PLANNING CONSULTANT



PROJECT

PROPOSED TEMPORARY PLACE
OF RECREATION, SPORTS OR
CULTURE WITH ANCILLARY
FACILITIES FOR A PERIOD OF 5
YEARS

SITE LOCATION

LOTS 2063 AND 2064 IN D.D. 106
AND ADJOINING GOVERNMENT
LAND, KAM TIN, YUEN LONG,
NEW TERRITORIES

(FORMER SHEK WU SCHOOL)

SCALE

1 : 500 @ A4

DRAWN BY MN	DATE 20.6.2024
----------------	-------------------

CHECKED BY	DATE
------------	------

APPROVED BY	DATE
-------------	------

DWG. TITLE
SWEPT PATH ANALYSIS

DWG NO. PLAN 5	VER. 001
-------------------	-------------