

Extracted from Approved Kam Tin South Outline Zoning Plan No. S/YL-KTS/15

Not to Scale

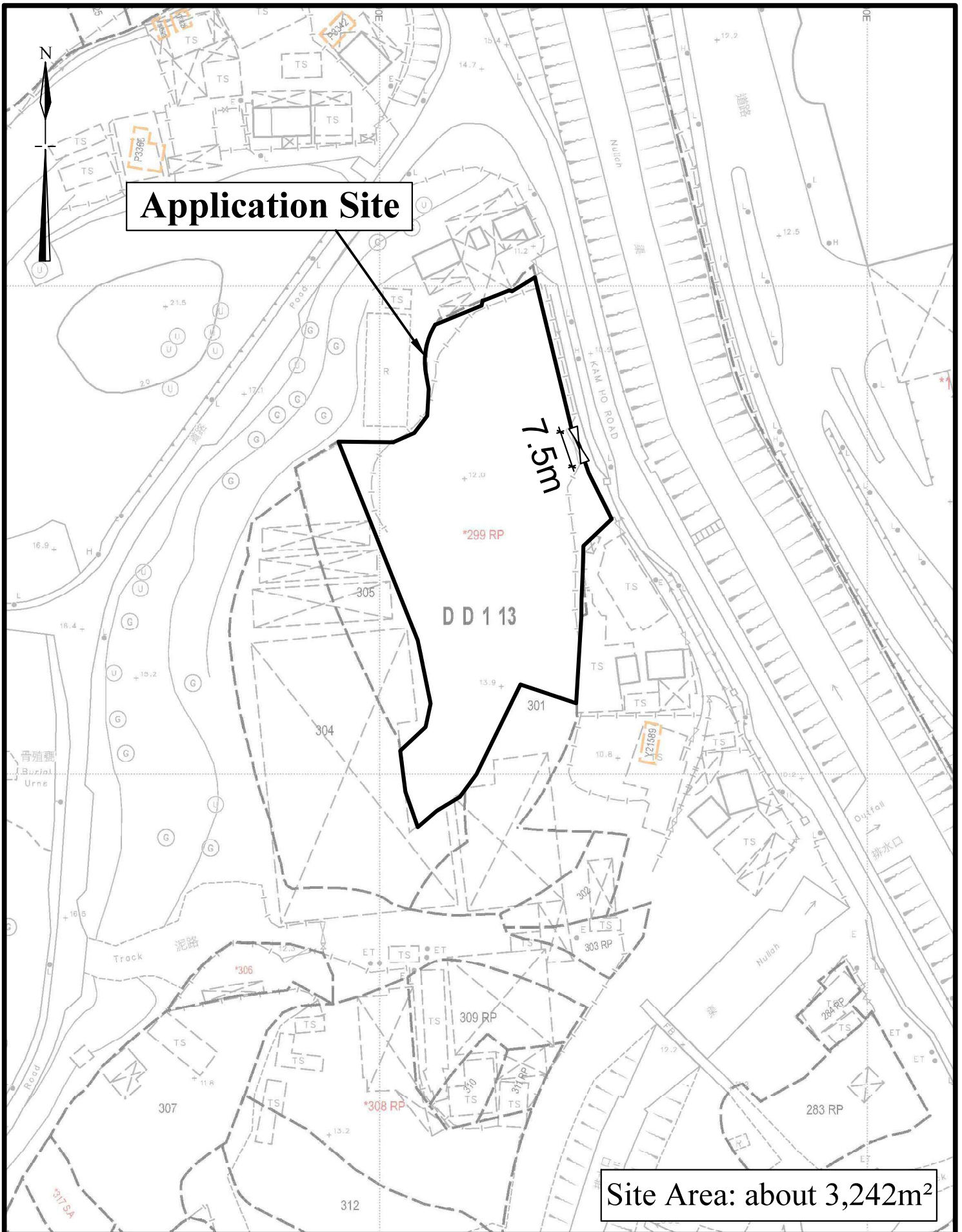
### Location Plan

Goldrich Planners & Surveyors Ltd.

April 2024

Lot No. 299 RP (part) in D. D. 113  
Yuen Long, New Territories

Plan 1  
( P 21096 )



**Application Site**

**Site Area: about 3,242m<sup>2</sup>**

**1 : 1000 (A4)**

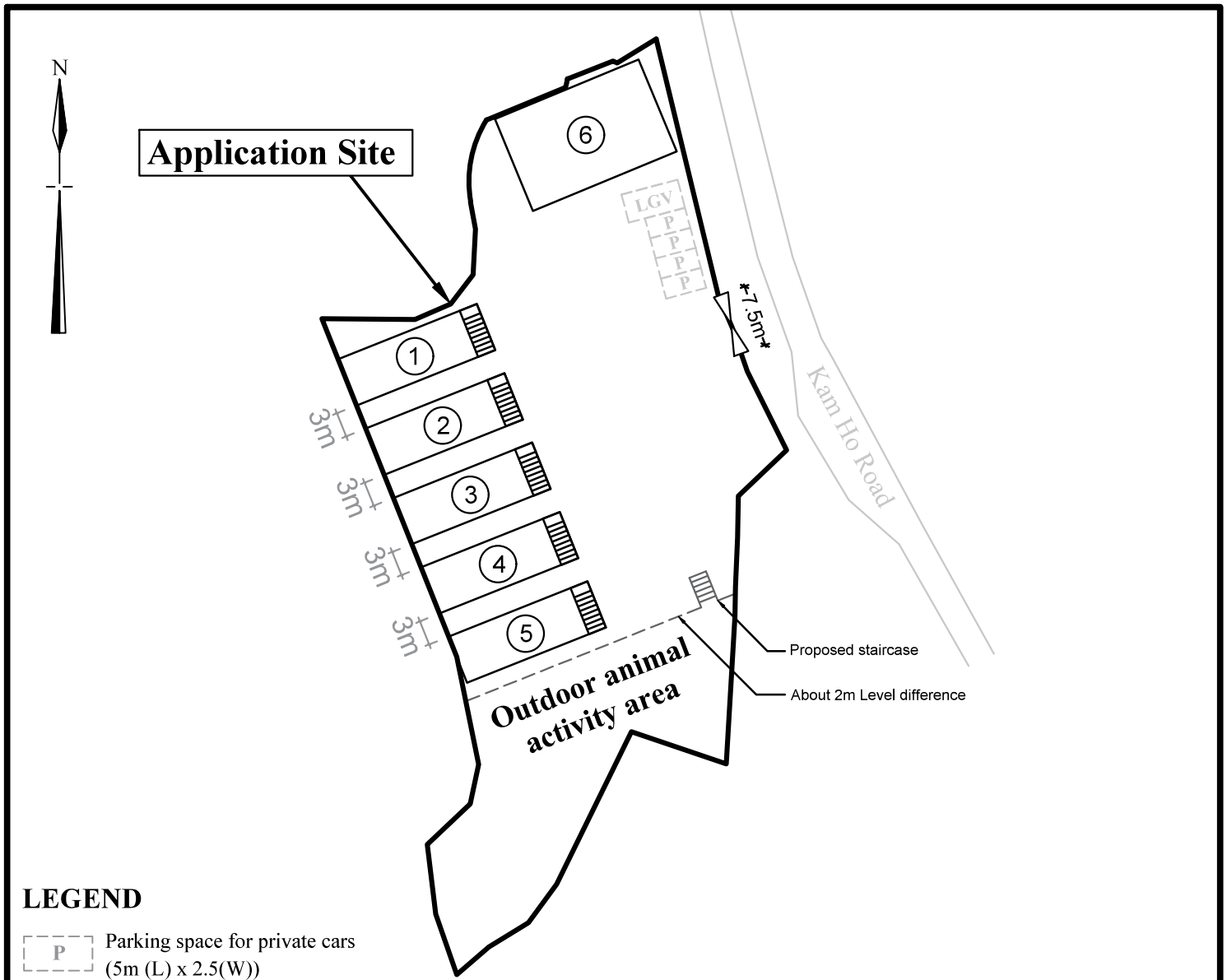
**Lot Index Plan**

**Goldrich Planners & Surveyors Ltd.**

**April 2024**

Lot No. 299 RP (part) in D. D. 113  
Yuen Long, New Territories

**Plan 2  
( P 21096 )**



**LEGEND**

- P Parking space for private cars (5m (L) x 2.5(W))
- LGV Parking space for light goods vehicles (7m (L) x 3.5(W))

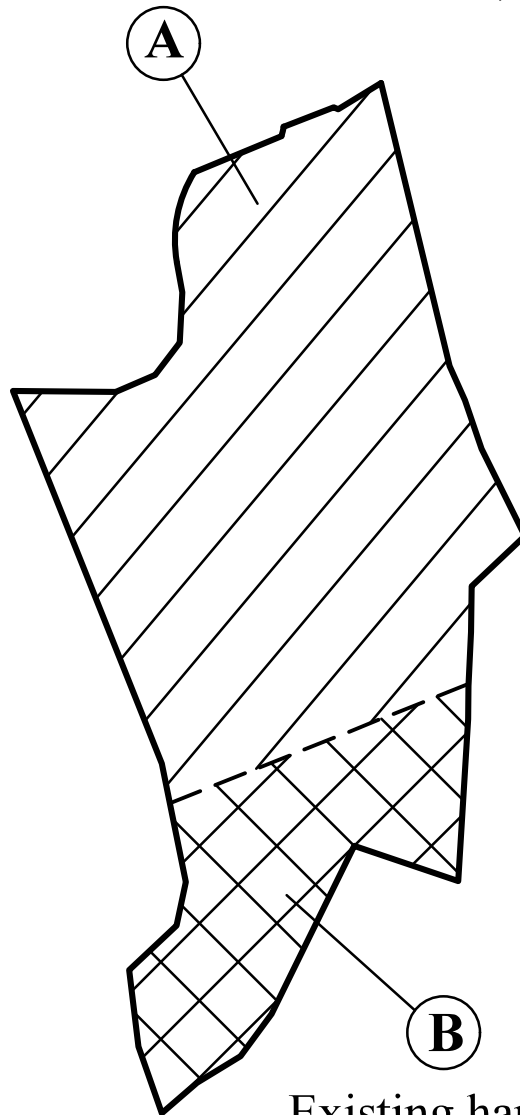
Site Area (about) : 3,242m<sup>2</sup>

No.	Structure / Use	Covered Area (about)	Floor Area (about)	Height	No. of Storeys
1	G/F and 1/F : Dog kennels	108m <sup>2</sup>	108m <sup>2</sup>	7m	2
			108m <sup>2</sup>		
2	G/F and 1/F : Dog kennels	108m <sup>2</sup>	108m <sup>2</sup>	7m	2
			108m <sup>2</sup>		
3	G/F and 1/F : Dog kennels	108m <sup>2</sup>	108m <sup>2</sup>	7m	2
			108m <sup>2</sup>		
4	1/F: Storeroom G/F: Staff pantry	108m <sup>2</sup>	108m <sup>2</sup>	7m	2
			108m <sup>2</sup>		
5	1/F: Ancillary Office G/F: Reception / Pet pick-up area	108m <sup>2</sup>	108m <sup>2</sup>	7m	2
			108m <sup>2</sup>		
6	Multi-function room	225m <sup>2</sup>	225m <sup>2</sup>	5m	1
Total:		765m <sup>2</sup>	1,305m <sup>2</sup>		

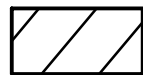
<b>1 : 750 (A4)</b>	<b>Layout Plan</b>	<b>Goldrich Planners &amp; Surveyors Ltd.</b>
<b>August 2024</b>	Lot No. 299 RP (part) in D. D. 113 Yuen Long, New Territories	<b>Plan 3 (P 21096 )</b>



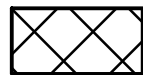
Existing hard paving of 0.1m in depth  
(from 11.9 mPD to 12.0 mPD)



Existing hard paving of 0.1m in depth  
(from 13.8 mPD to 13.9 mPD)



Portion A (about) : 2500m<sup>2</sup>  
(existing ground level: 12.0 mPD)



Portion B (about) : 742m<sup>2</sup>  
(existing ground level: 13.9 mPD)

---

Total Site Area (about) : 3,242m<sup>2</sup>

N.T.S

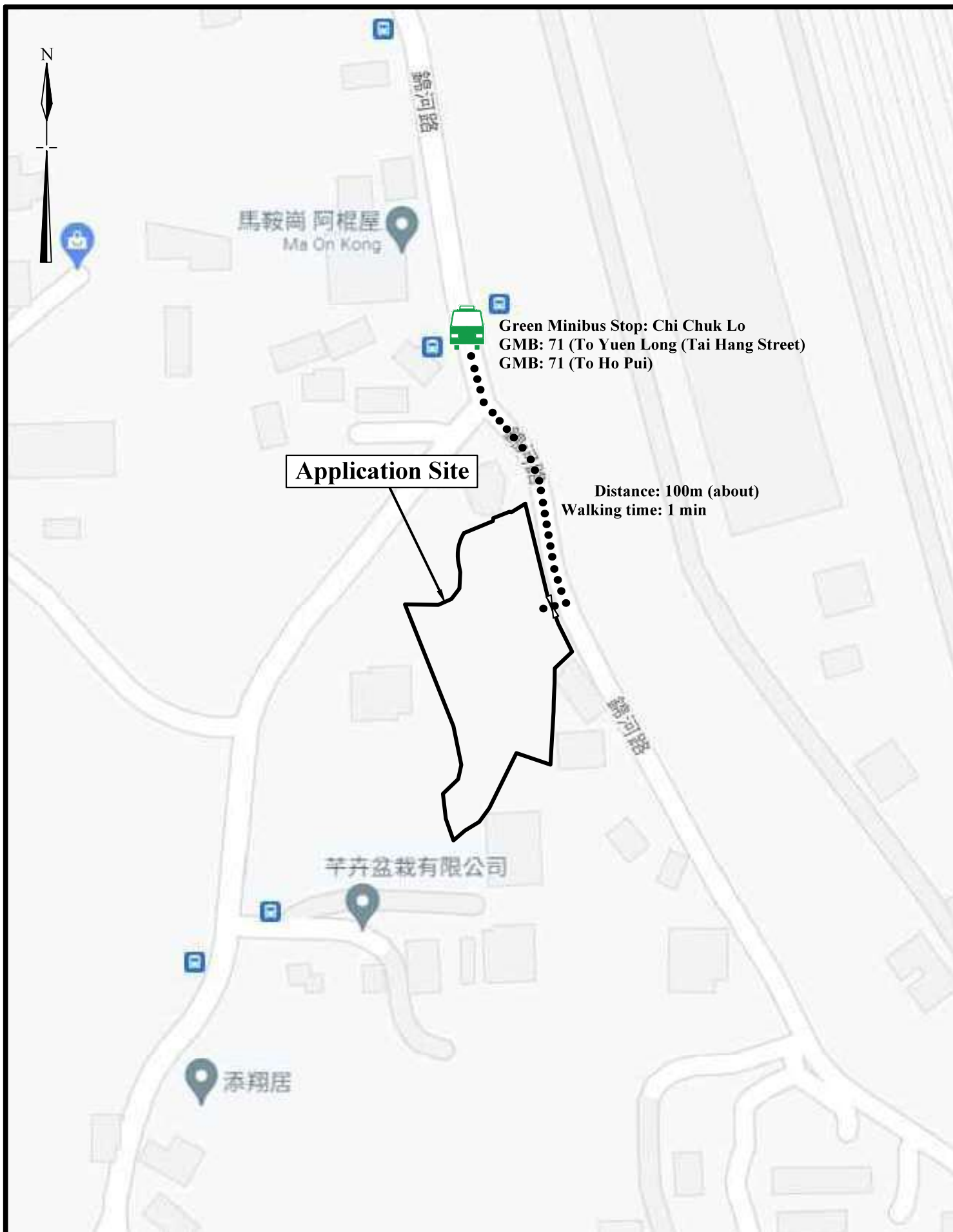
**Plan Showing the Existing  
Filling of Land**

**Goldrich Planners &  
Surveyors Ltd.**

**April 2024**

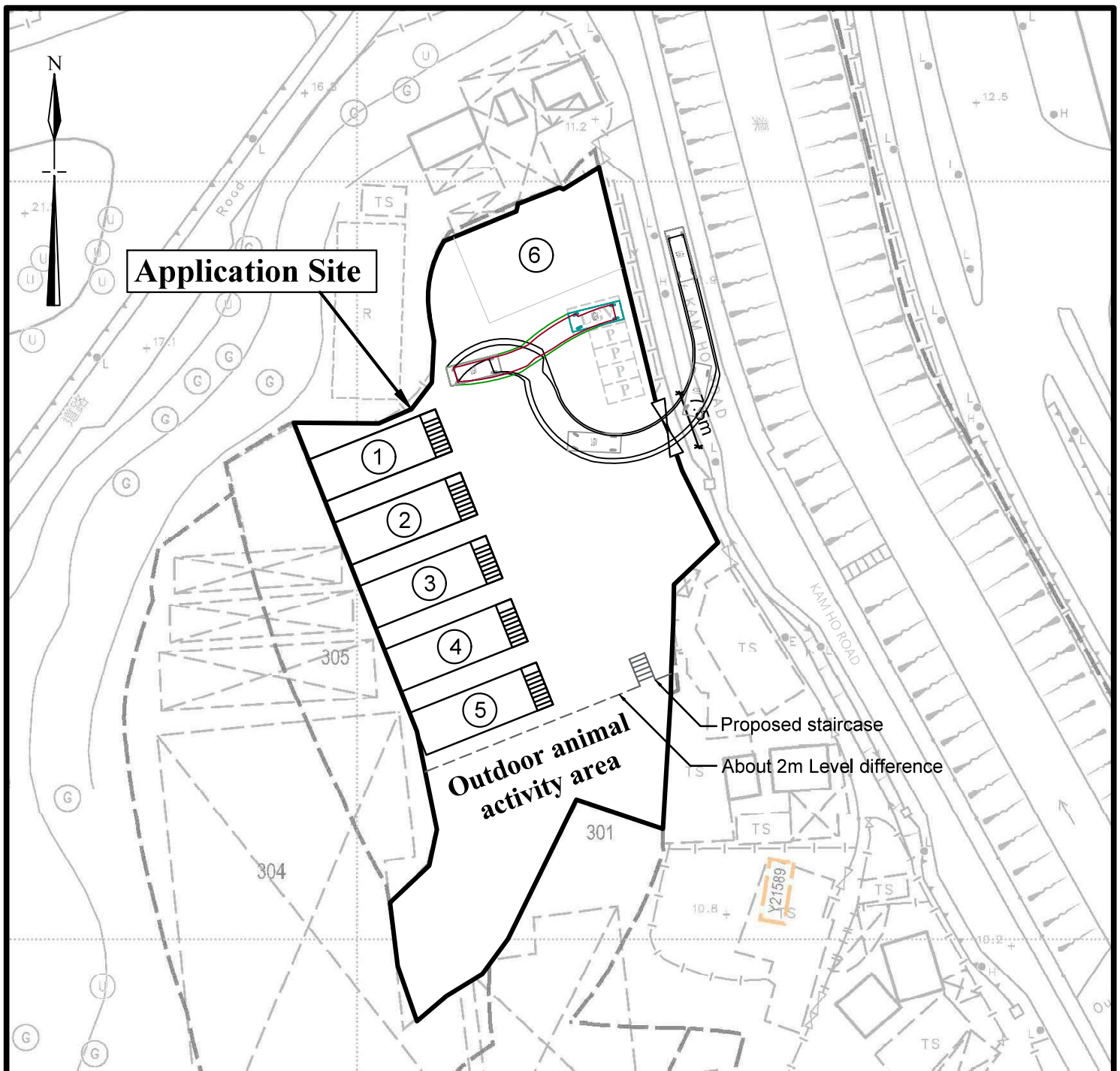
Lot No. 299 RP (part) in D. D. 113  
Yuen Long, New Territories

**Plan 4  
(P 21096 )**






<p><b>1 : 1000 (A4)</b></p>	<p><b>Nearest Public Transport Services</b></p>	<p><b>Goldrich Planners &amp; Surveyors Ltd.</b></p>
<p><b>April 2024</b></p>	<p>Lot No. 299 RP (part) in D. D. 113 Yuen Long, New Territories</p>	<p><b>Plan 5 ( P 21096 )</b></p>





## Legend

-  Parking space for private cars  
(5m (L) x 2.5(W))
-  Parking space for light goods vehicles  
(7m (L) x 3.5(W))
-  Light goods vehicle  
(7m (L) x 2.5(W))

1 : 750 (A4)

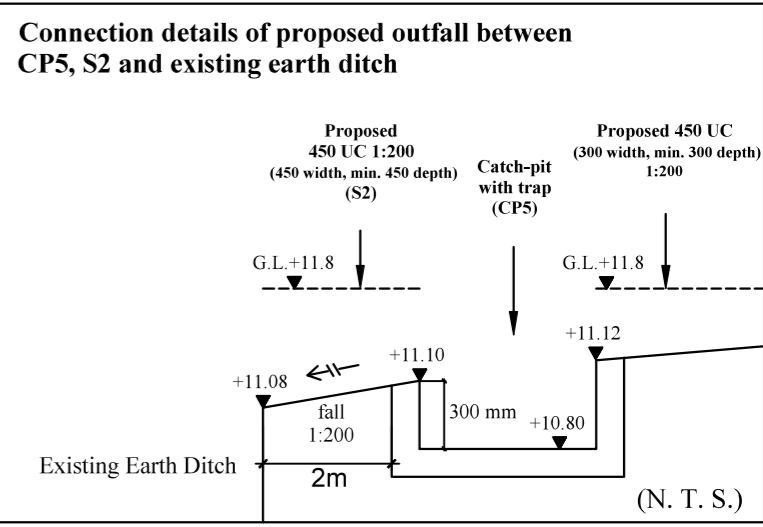
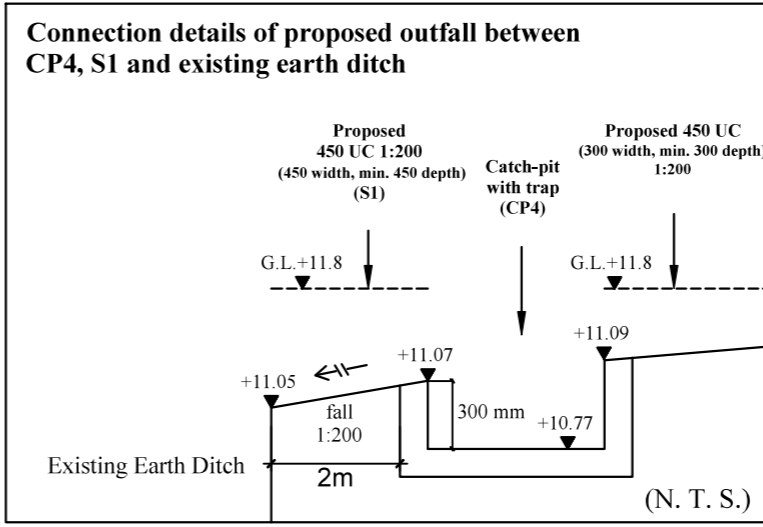
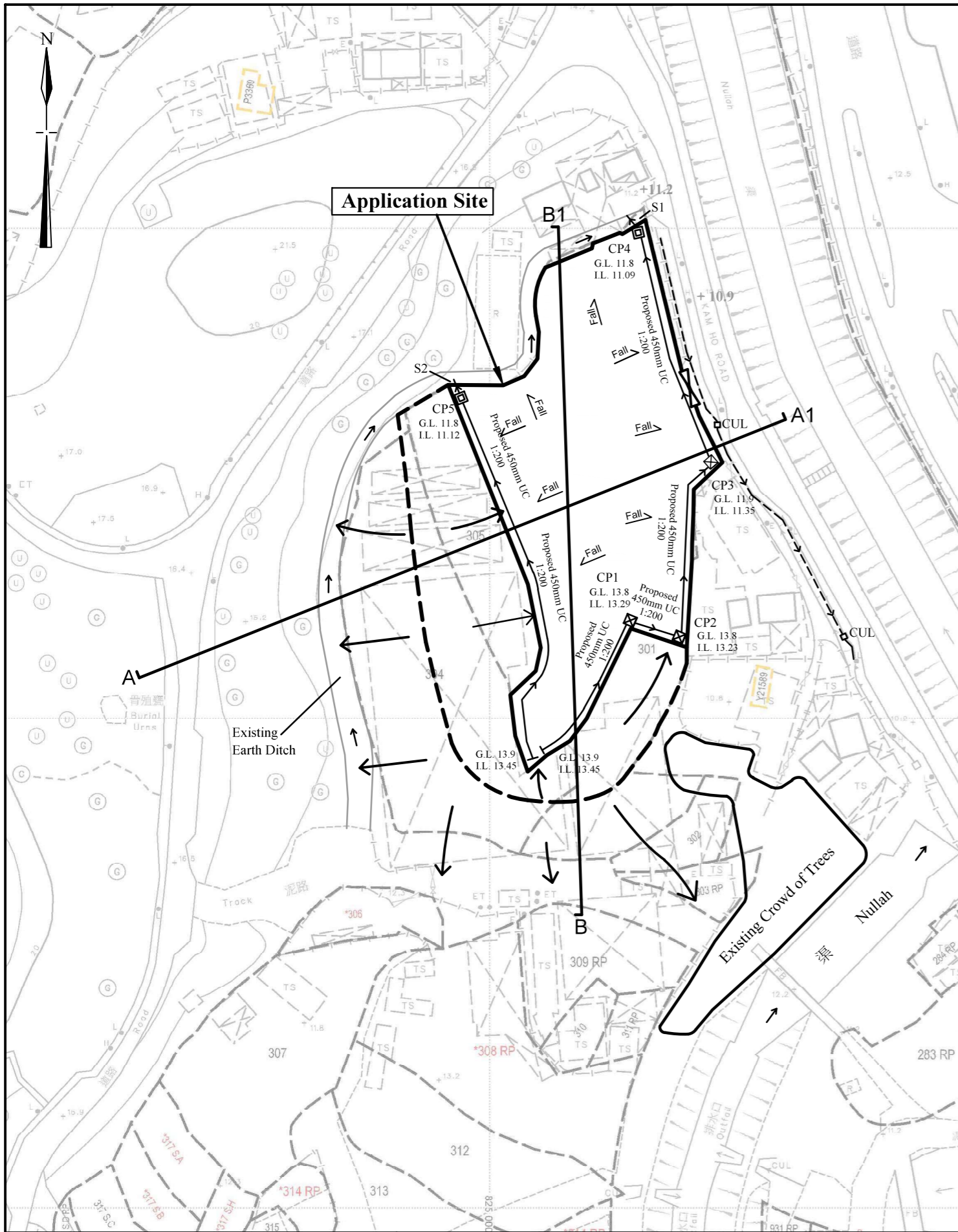
April 2024

## Swept Path Analysis

Lot No. 299 RP (part) in D. D. 113  
Yuen Long, New Territories

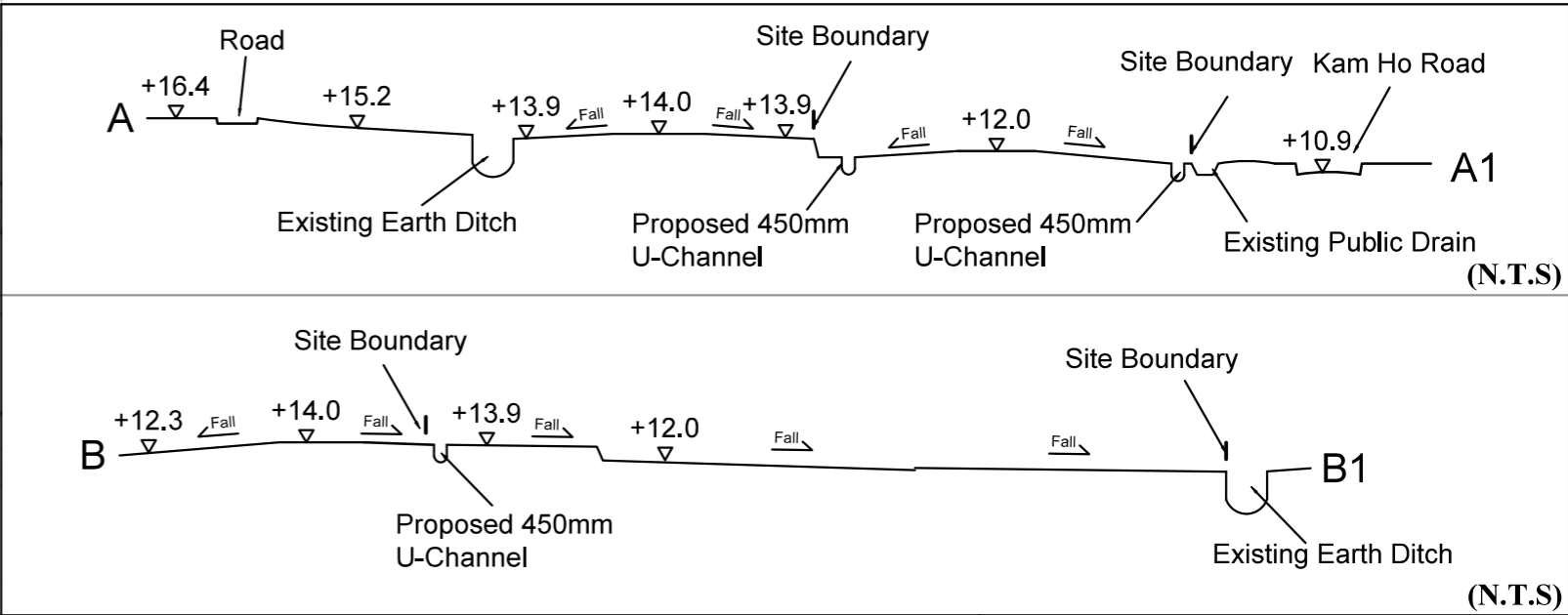
Goldrich Planners &  
Surveyors Ltd.

Plan 6  
(P 21096 )



**LEGEND:**

- ☒ Proposed catch pit
- ☐ Proposed last catch pit
- CUL ☐ Existing culvert
- Direction of flow
- - - Existing underground drainage
- Proposed 450mm U-channel(1:200)



**1 : 1000**

**April 2024**

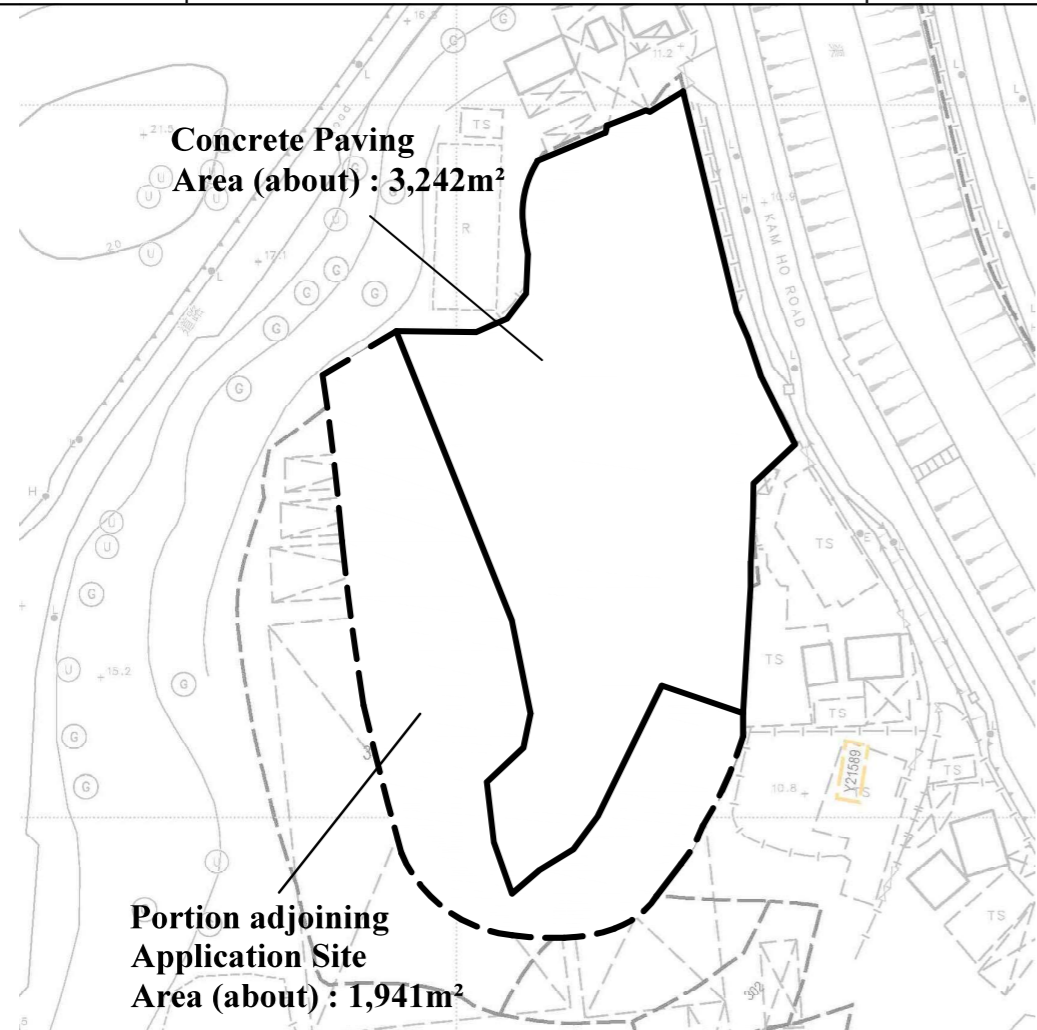
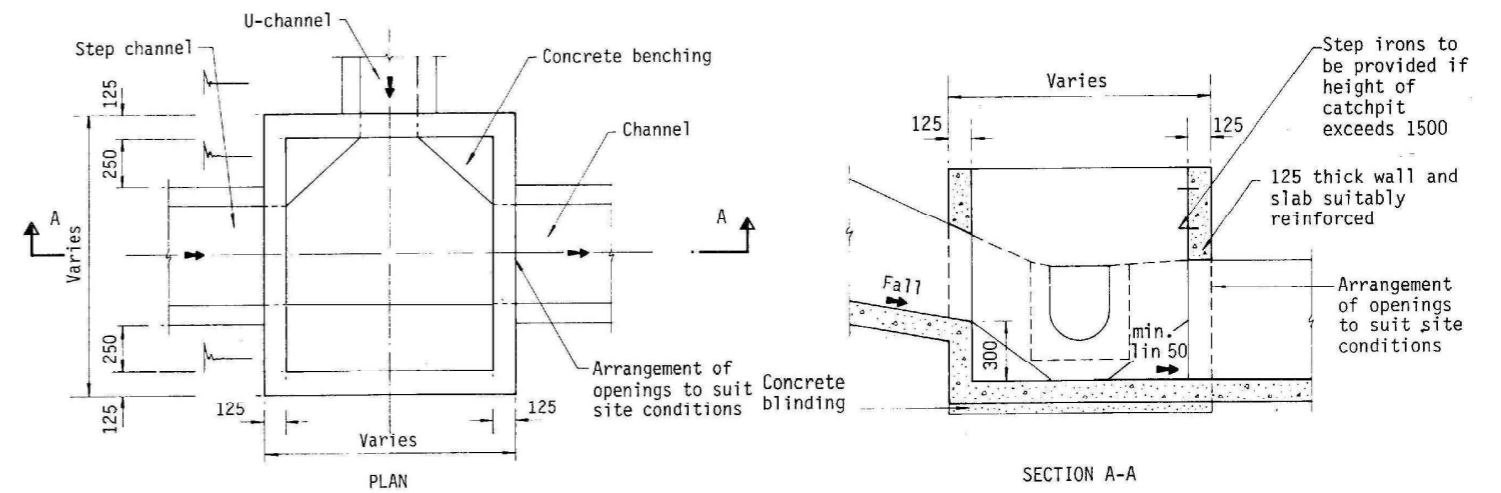
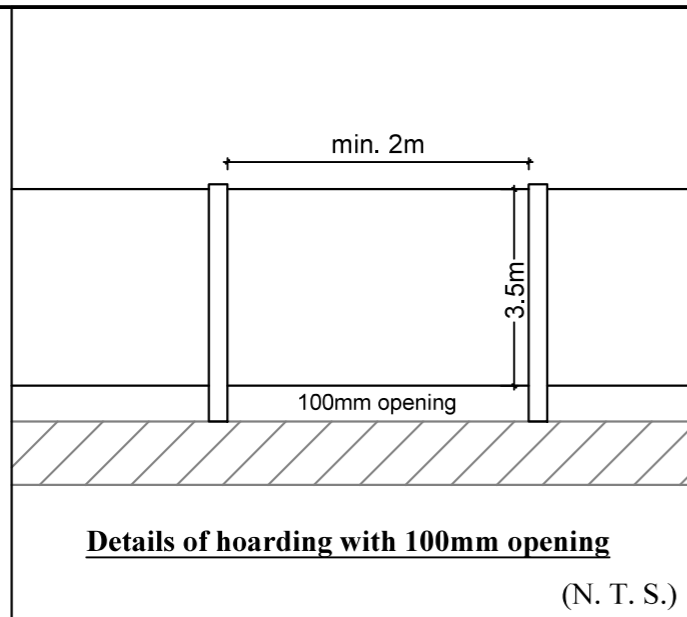
**Drainage Proposal**

Lot No. 299 RP (part) in D. D. 113  
Yuen Long, New Territories

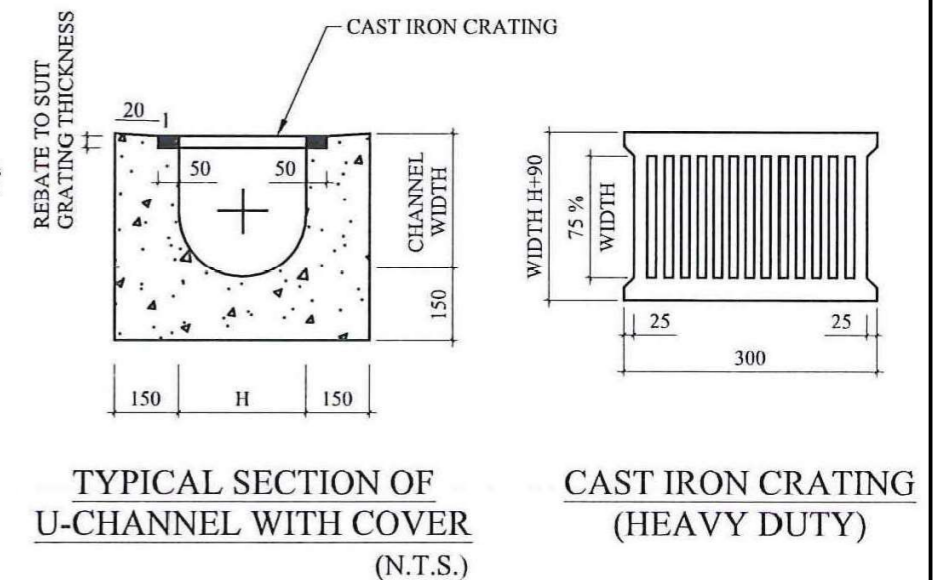
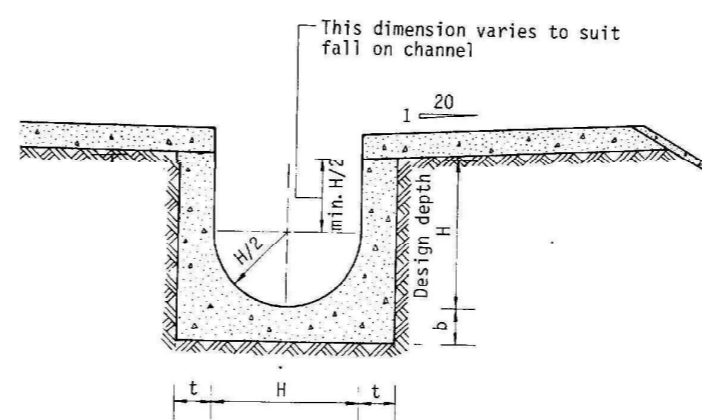
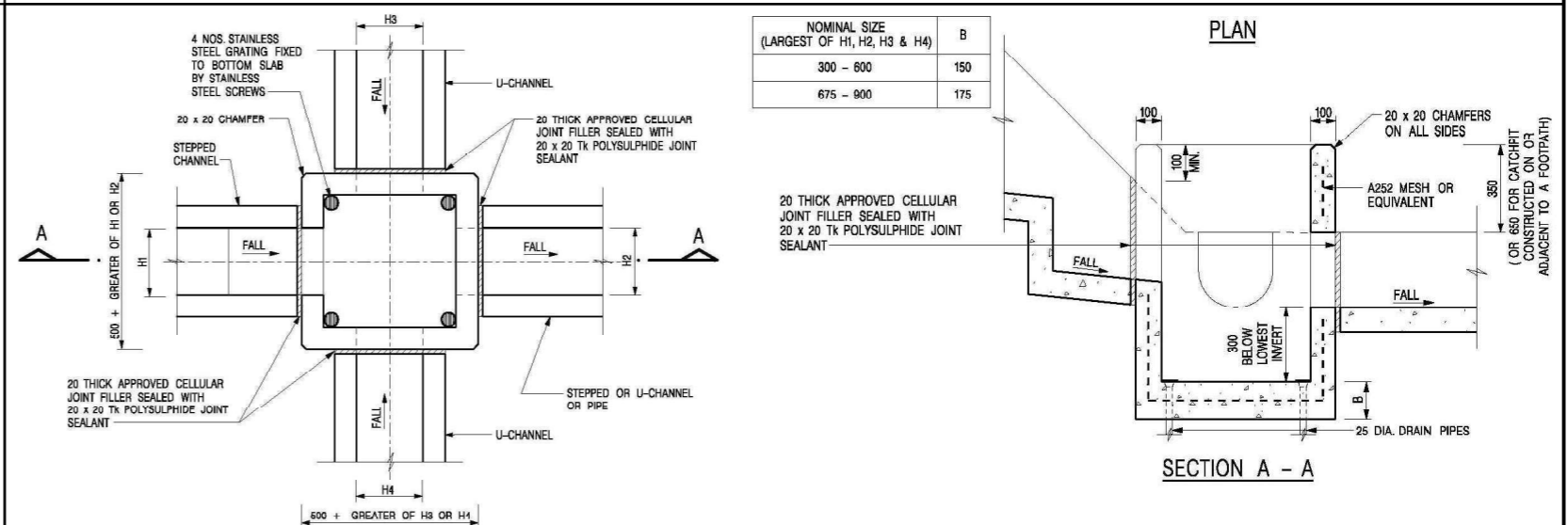
**Goldrich Planners & Surveyors Ltd.**

**Plan 7.1**  
**( P 21096 )**





**AREA OF CATCHMENT**  
(N.T.S)



N.T.S

April 2024

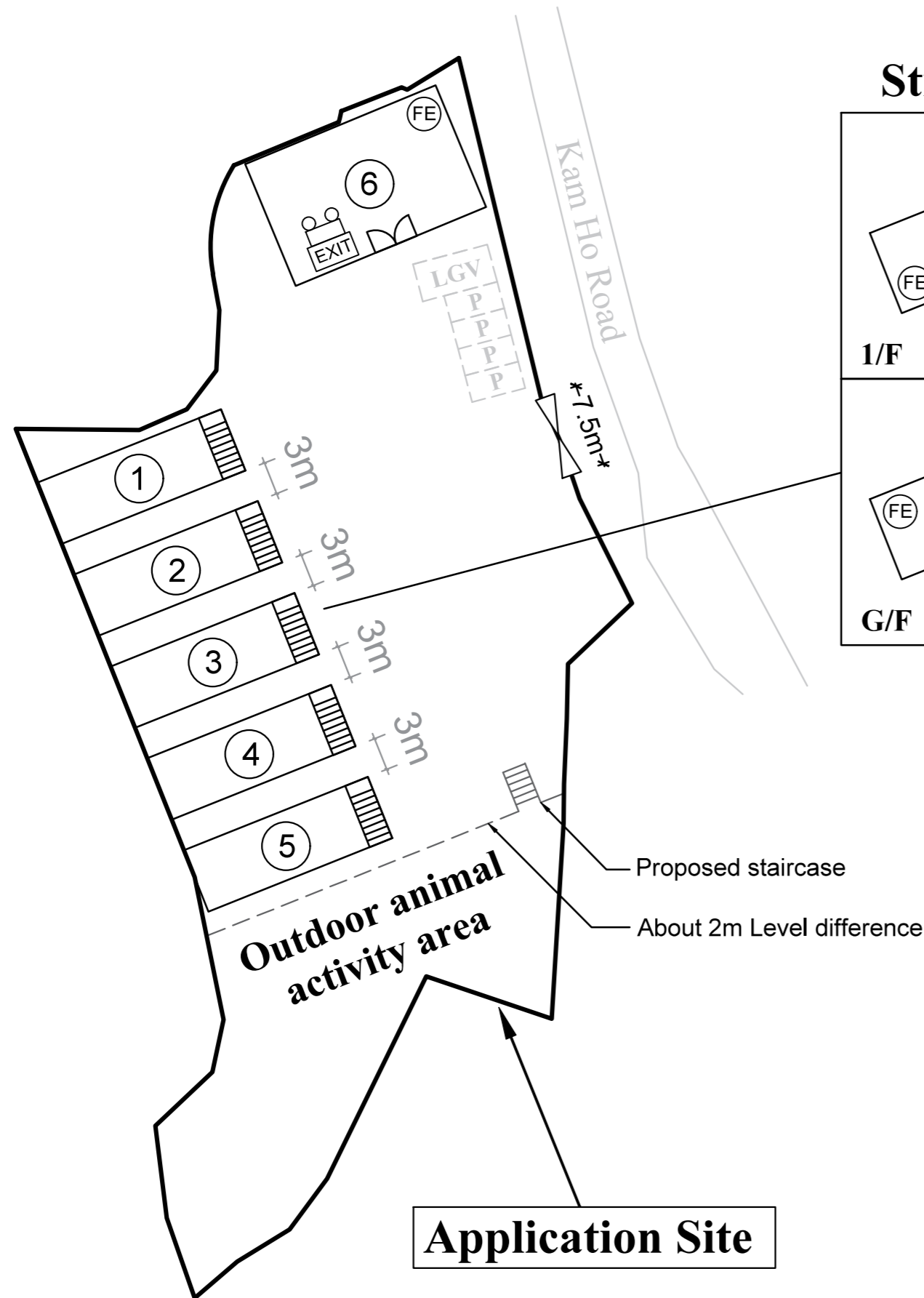
# Drainage Proposal

Lot No. 299 RP (part) in D. D. 113  
Yuen Long, New Territories

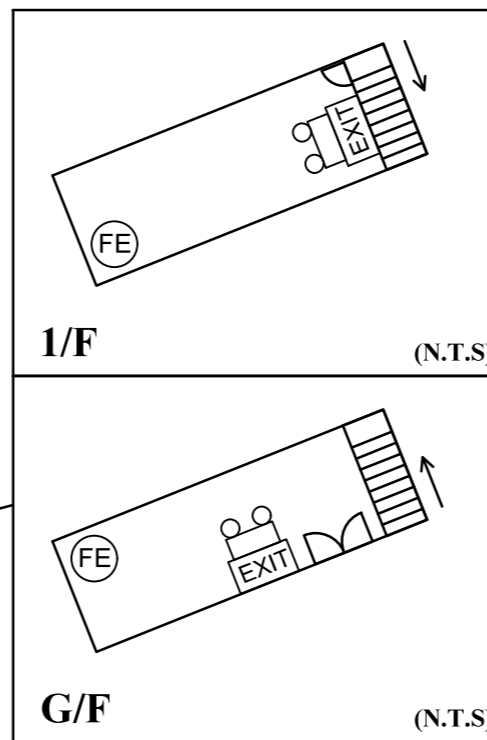
Goldrich Planners & Surveyors Ltd.

Plan 7.2  
(P 21096)





### Structures 1-5



### FS NOTES:

- (i) Sufficient emergency lighting shall be provided in accordance with BS 5266-1:2016, BS EN 1838:2013 and the FSD Circular Letter No. 4/2021
- (ii) Sufficient directional and exit sign shall be provided in accordance with BS 5266: Part 1 and FSD Circular Letter 5/2008.
- (iii) Portable hand-operated approved appliances shall be provided as required by occupancy.

### Legend

- P Parking space for private cars (5m (L) x 2.5(W))
- LGV Parking space for light goods vehicles (7m (L) x 3.5(W))
- FE 5.0kg CO2 Gas type Fire Extinguisher x11
- Emergency Light x11
- EXIT Exit sign x11

Site Area (about) : 3,242m<sup>2</sup>

No.	Structure / Use	Covered Area (about)	Floor Area (about)	Height	Storeys
1	G/F and 1/F : Dog kennels	108m <sup>2</sup>	108m <sup>2</sup>	7m	2
			108m <sup>2</sup>		
2	G/F and 1/F : Dog kennels	108m <sup>2</sup>	108m <sup>2</sup>	7m	2
			108m <sup>2</sup>		
3	G/F and 1/F : Dog kennels	108m <sup>2</sup>	108m <sup>2</sup>	7m	2
			108m <sup>2</sup>		
4	1/F: Storeroom G/F: Staff pantry	108m <sup>2</sup>	108m <sup>2</sup>	7m	2
			108m <sup>2</sup>		
5	1/F: Ancillary Office G/F: Reception / Pet pick-up area	108m <sup>2</sup>	108m <sup>2</sup>	7m	2
			108m <sup>2</sup>		
6	Multi-function room	225m <sup>2</sup>	225m <sup>2</sup>	5m	1
Total:		765m <sup>2</sup>	1,305m <sup>2</sup>		

1:500 (A3)

August 2024

## Fire Service Installation Proposal

Lot No. 299 RP (part) in D. D. 113  
Yuen Long, New Territories

Goldrich Planners & Surveyors Ltd.

Plan 8  
( P 21096 )