

LOCATION OF THE APPLICATION SITE

APPLICATION SITE AREA : 1,298 m² (ABOUT)

VEHICULAR ACCESS
ACCESSIBLE FROM KAM SHEUNG ROAD VIA A LOCAL ACCESS

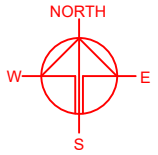
ACCESSIBLE FROM KAM SHEUNG ROAD VIA A LOCAL ACCESS

APPLICATION SITE

SITE BOUNDARY FOR IDENTIFICATION PURPOSE

LEGEND

 APPLICATION SITE



PLANNING CONSULTANT



PROJECT

PROPOSED TEMPORARY SHOP AND SERVICES AND EATING PLACE WITH ANCILLARY FACILITIES FOR A PERIOD OF 5 YEARS

SITE LOCATION

LOT 390 RP (PART) IN D.D. 106, KAM SHEUNG ROAD, YUEN LONG, NEW TERRITORIES

SCALE

1: 1500 @ A4

DRAWN BY

MN

DATE

12.9.2024

CHECKED BY

DATE

APPROVED BY

DATE

DWG. TITLE

LOCATION PLAN

DWG. NO.

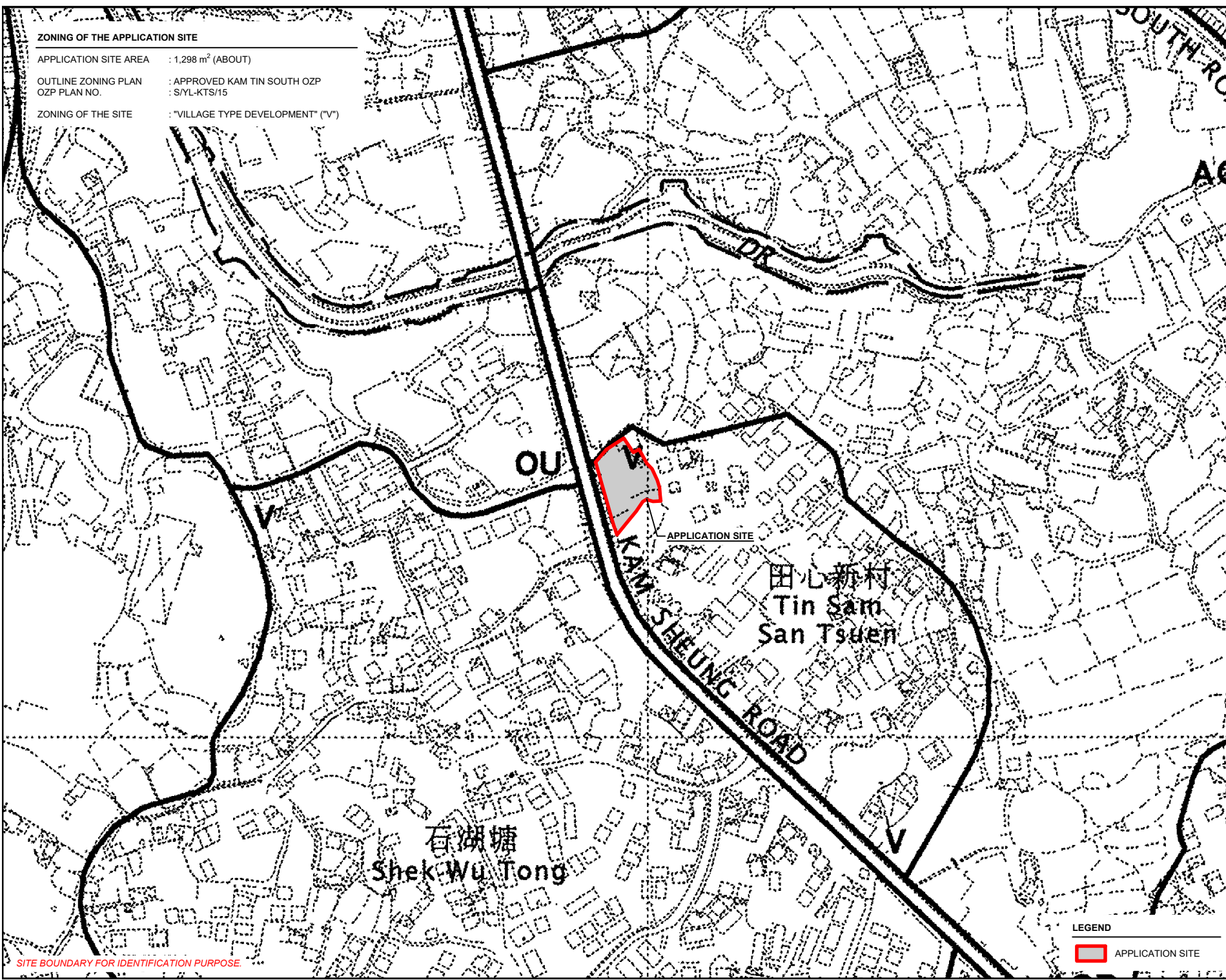
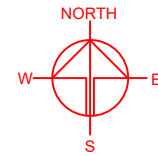
PLAN 1

VER.

001

ZONING OF THE APPLICATION SITE


APPLICATION SITE AREA : 1,298 m² (ABOUT)
OUTLINE ZONING PLAN : APPROVED KAM TIN SOUTH OZP
OZP PLAN NO. : S/YL-KTS/15
ZONING OF THE SITE : "VILLAGE TYPE DEVELOPMENT" ("V")



SITE BOUNDARY FOR IDENTIFICATION PURPOSE

LEGEND

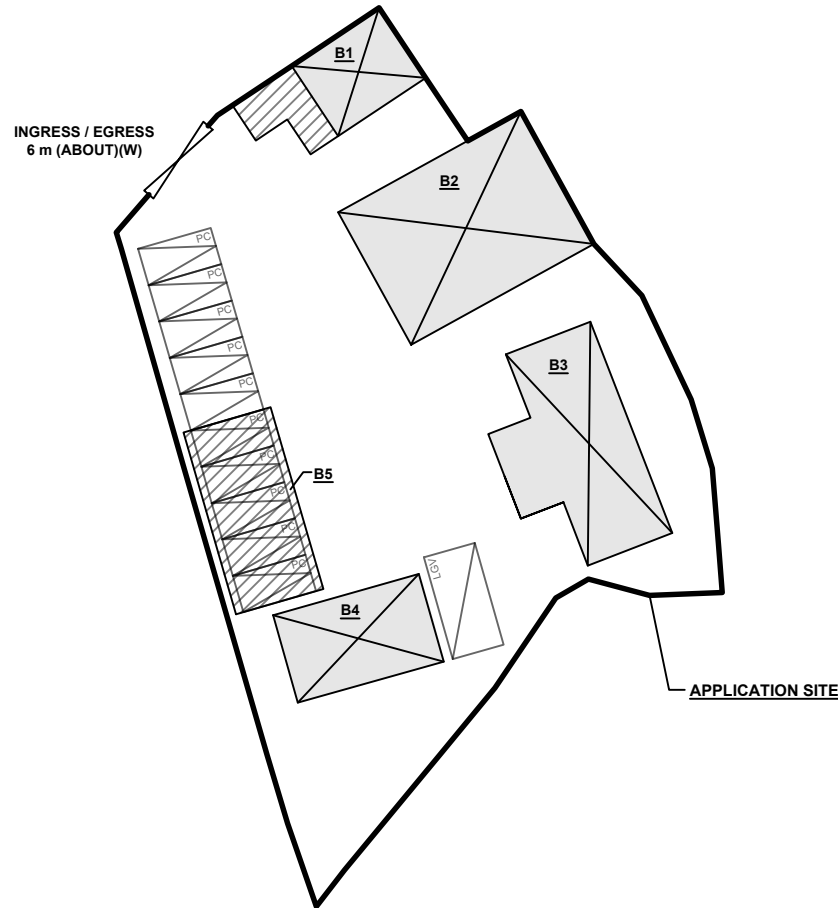
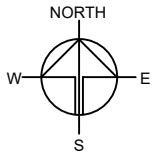
 APPLICATION SITE

PLANNING CONSULTANT	
	
PROJECT	
PROPOSED TEMPORARY SHOP AND SERVICES AND EATING PLACE WITH ANCILLARY FACILITIES FOR A PERIOD OF 5 YEARS	
SITE LOCATION	
LOT 390 RP (PART) IN D.D. 106, KAM SHEUNG ROAD, YUEN LONG, NEW TERRITORIES	
SCALE	
1 : 3000 @ A4	
DRAWN BY	DATE
MN	12.9.2024
CHECKED BY	DATE
APPROVED BY	DATE
DWG. TITLE	
ZONING OF THE SITE	
DWG. NO.	VER.
PLAN 2	001

DEVELOPMENT PARAMETERS

APPLICATION SITE AREA	: 1,298 m ²	(ABOUT)
COVERED AREA	: 441 m ²	(ABOUT)
UNCOVERED AREA	: 857 m ²	(ABOUT)
PLOT RATIO	: 0.45	(ABOUT)
SITE COVERAGE	: 34 %	(ABOUT)
NO. OF STRUCTURE	: 5	
DOMESTIC GFA	: NOT APPLICABLE	
NON-DOMESTIC GFA	: 589 m ²	(ABOUT)
TOTAL GFA	: 589 m ²	(ABOUT)
BUILDING HEIGHT	: 3 - 8 m	(ABOUT)
NO. OF STOREY	: 1 - 2	

STRUCTURE	USE	COVERED AREA	GFA	BUILDING HEIGHT
B1	(G/F) (1/F)	60 m ² (ABOUT)	60 m ² (ABOUT) 40 m ² (ABOUT)	7 m (ABOUT)(2-STOREY)
B2	RESTAURANT, KITCHEN & WASHROOM	138 m ² (ABOUT)	138 m ² (ABOUT)	3.5m (ABOUT)(1-STOREY)
B3	(G/F) (1/F)	108 m ² (ABOUT)	108 m ² (ABOUT) 108 m ² (ABOUT)	8m (ABOUT)(2-STOREY)
B4	SHOP AND SERVICES	60 m ² (ABOUT)	60 m ² (ABOUT)	3m (ABOUT)(1-STOREY)
B5	RAIN SHELTER FOR PARKING SPACE	75 m ² (ABOUT)	75 m ² (ABOUT)	3m (ABOUT)(1-STOREY)
TOTAL		441 m² (ABOUT)	589 m² (ABOUT)	



PARKING AND LOADING/UNLOADING PROVISIONS

NO. OF PRIVATE CAR PARKING SPACE	: 10
DIMENSION OF PARKING SPACE	: 5m (L) X 2.5m (W)
NO. OF L/U SPACE FOR LIGHT GOODS VEHICLE	: 1
DIMENSION OF L/U SPACE	: 7m (L) X 3.5m (W)

LEGEND

- APPLICATION SITE
- STRUCTURE (ENCLOSED)
- STRUCTURE (CANOPY)
- PARKING SPACE
- LOADING / UNLOADING SPACE
- INGRESS / EGRESS

PLANNING CONSULTANT



PROJECT

PROPOSED TEMPORARY SHOP AND SERVICES AND EATING PLACE WITH ANCILLARY FACILITIES FOR A PERIOD OF 5 YEARS

SITE LOCATION

LOT 390 RP (PART) IN D.D. 106, KAM SHEUNG ROAD, YUEN LONG, NEW TERRITORIES

SCALE

1 : 500 @ A4

DRAWN BY	DATE
MN	12.9.2024

REVISED BY	DATE

APPROVED BY	DATE

DWG. TITLE
LAYOUT PLAN

DWG NO.	VER.
PLAN 4	001

SWEPT PATH ANALYSIS

VEHICLE FOR ANALYSIS : LIGHT GOODS VEHICLE
 DIMENSIONS OF VEHICLE : 2.1m (W) X 5.2m (L)
 WIDTH OF INGRESS / EGRESS : 6m (ABOUT)

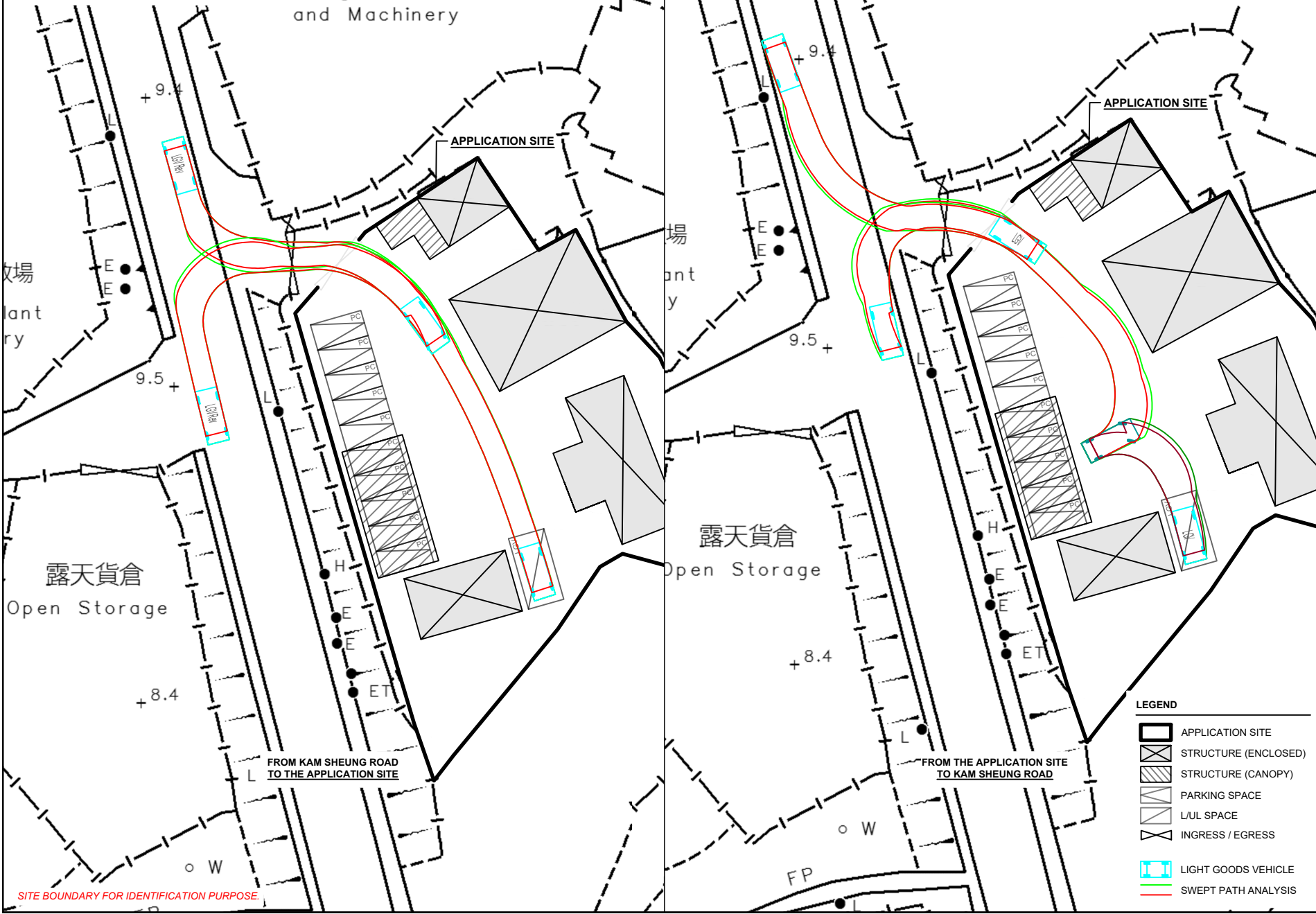
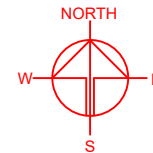
SWEPT PATHS OF VEHICLES GENERATED BY AUTODESK
 VEHICLE TRACKING

機械設備存放場

Storage of Plant
and Machinery

工業機械設備存放場

Storage of Plant
and Machinery



LEGEND

- APPLICATION SITE
- STRUCTURE (ENCLOSED)
- STRUCTURE (CANOPY)
- PARKING SPACE
- L/UL SPACE
- INGRESS / EGRESS
- LIGHT GOODS VEHICLE
- SWEPT PATH ANALYSIS

PLANNING CONSULTANT

PROJECT
 PROPOSED TEMPORARY SHOP AND SERVICES AND EATING PLACE WITH ANCILLARY FACILITIES FOR A PERIOD OF 5 YEARS

SITE LOCATION
 LOT 390 RP (PART) IN D.D. 106, KAM SHEUNG ROAD, YUEN LONG, NEW TERRITORIES

SCALE
 1 : 500 @ A4

DRAWN BY MN	DATE 12.9.2024
REVISED BY	DATE
APPROVED BY	DATE
DWG. TITLE SWEPT PATH ANALYSIS	
DWG. NO. PLAN 5	VER. 001

SITE BOUNDARY FOR IDENTIFICATION PURPOSE.