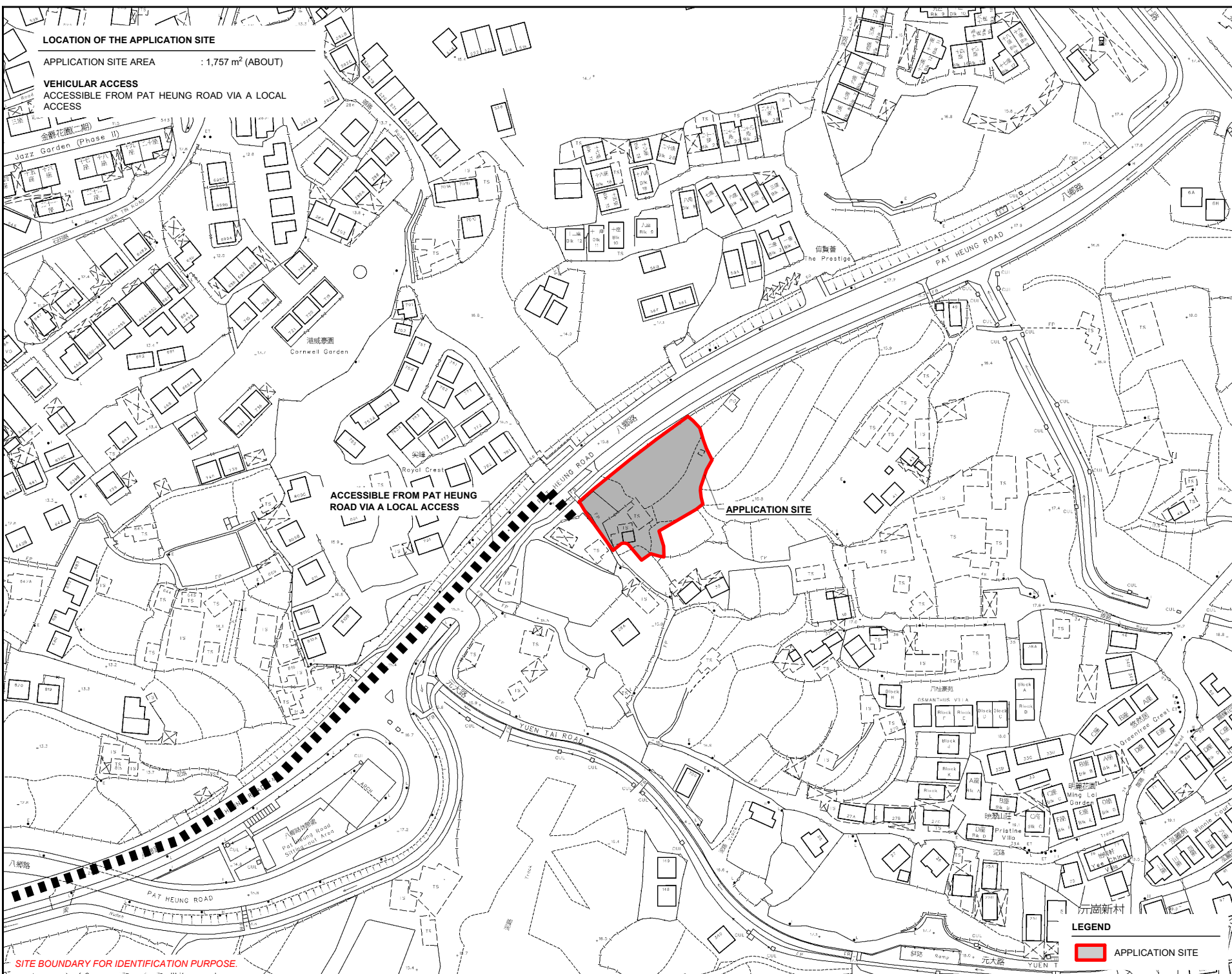


**LOCATION OF THE APPLICATION SITE**

APPLICATION SITE AREA : 1,757 m<sup>2</sup> (ABOUT)

**VEHICULAR ACCESS**

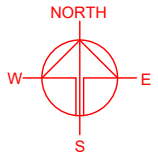
ACCESSIBLE FROM PAT HEUNG ROAD VIA A LOCAL ACCESS



ACCESSIBLE FROM PAT HEUNG ROAD VIA A LOCAL ACCESS

APPLICATION SITE

SITE BOUNDARY FOR IDENTIFICATION PURPOSE.



PLANNING CONSULTANT



PROJECT

PROPOSED ANIMAL ESTABLISHMENT PLACE WITH ANCILLARY FACILITIES FOR A PERIOD OF 3 YEARS AND ASSOCIATED FILLING OF LAND

TEMPORARY BOARDING AND EATING PLACE WITH ANCILLARY FACILITIES FOR A PERIOD OF 3 YEARS AND ASSOCIATED FILLING OF LAND

SITE LOCATION

LOT 1892 RP IN D.D. 106, PAT HEUNG, YUEN LONG, NEW TERRITORIES

SCALE

1 : 2000 @ A4

DRAWN BY

MN

DATE

26.11.2024

REVISED BY

DATE

APPROVED BY

DATE

**LEGEND**

 APPLICATION SITE

DWG. TITLE

LOCATION PLAN

DWG. NO.

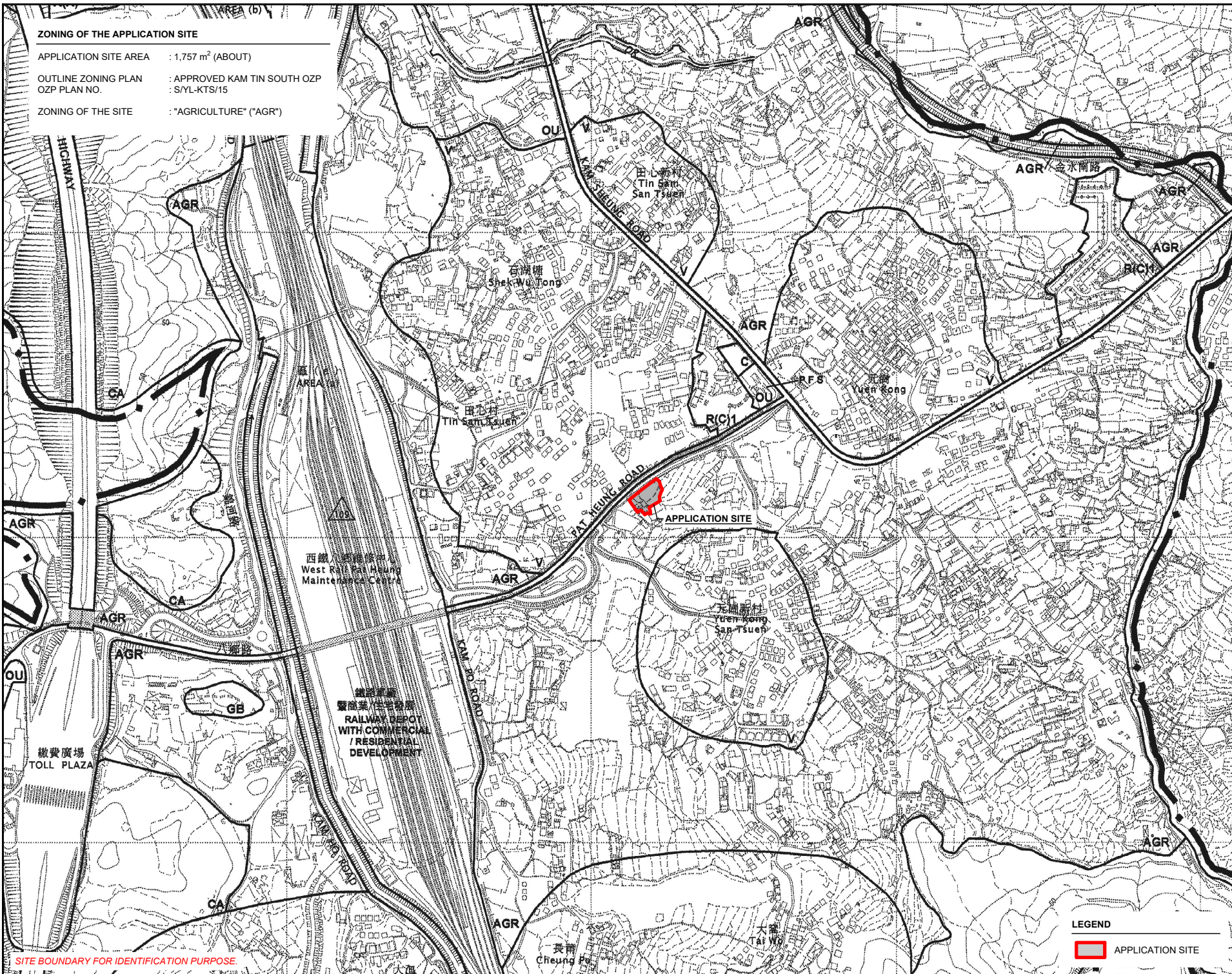
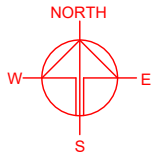
PLAN 1

VER.

001

**ZONING OF THE APPLICATION SITE**

APPLICATION SITE AREA : 1,757 m<sup>2</sup> (ABOUT)  
 OUTLINE ZONING PLAN : APPROVED KAM TIN SOUTH OZP  
 OZP PLAN NO. : S/YL-KTS/15  
 ZONING OF THE SITE : "AGRICULTURE" ("AGR")



SITE BOUNDARY FOR IDENTIFICATION PURPOSE.

**LEGEND**

APPLICATION SITE

PLANNING CONSULTANT

PROJECT

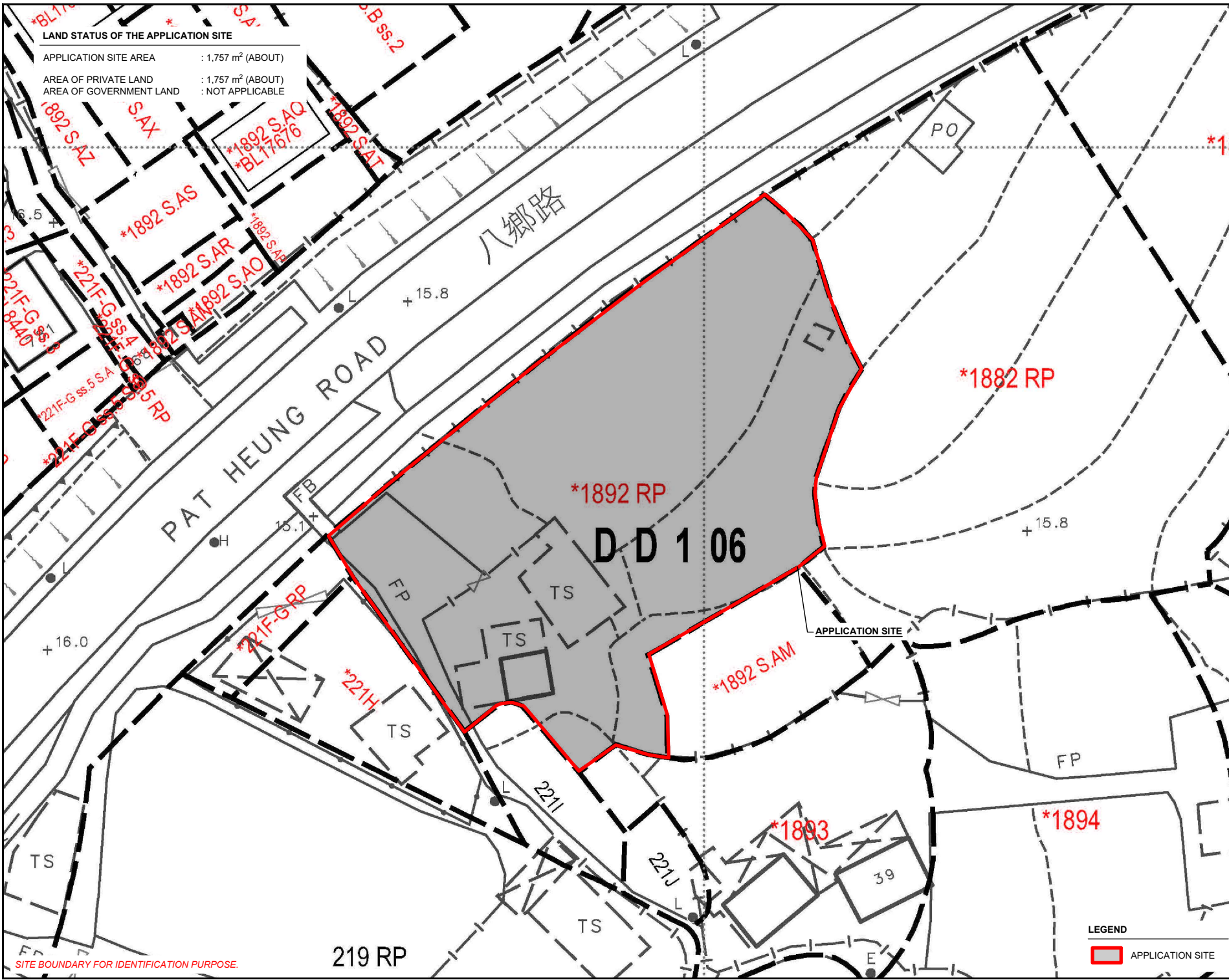
PROPOSED ANIMAL ESTABLISHMENT WITH ANCILLARY FACILITIES FOR A PERIOD OF 3 YEARS AND ASSOCIATED FILLING OF LAND

TEMPORARY BOARDING AND EATING PLACE WITH ANCILLARY FACILITIES FOR A PERIOD OF 3 YEARS AND ASSOCIATED FILLING OF LAND

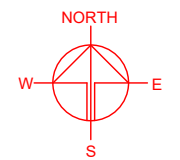
SITE LOCATION

LOT 1892 RP IN D.D. 106, PAT HEUNG, YUEN LONG, NEW TERRITORIES

SCALE	
1 : 8000 @ A4	
DRAWN BY	DATE
MN	26.11.2024
REVISED BY	DATE
APPROVED BY	DATE
DWG. TITLE	
ZONING OF THE SITE	
DWG. NO.	VER.
PLAN 2	001



LAND STATUS OF THE APPLICATION SITE  
 APPLICATION SITE AREA : 1,757 m<sup>2</sup> (ABOUT)  
 AREA OF PRIVATE LAND : 1,757 m<sup>2</sup> (ABOUT)  
 AREA OF GOVERNMENT LAND : NOT APPLICABLE



SITE BOUNDARY FOR IDENTIFICATION PURPOSE.

LEGEND  
 APPLICATION SITE

PLANNING CONSULTANT  
 R-Riches  
 Property Consultants Ltd.

PROJECT  
 PROPOSED ANIMAL ESTABLISHMENT PLACE WITH ANCILLARY FACILITIES FOR A PERIOD OF 3 YEARS AND ASSOCIATED FILLING OF LAND  
 TEMPORARY BOARDING AND EATING PLACE WITH ANCILLARY FACILITIES FOR A PERIOD OF 3 YEARS AND ASSOCIATED FILLING OF LAND

SITE LOCATION  
 LOT 1892 RP IN D.D. 106, PAT HEUNG, YUEN LONG, NEW TERRITORIES

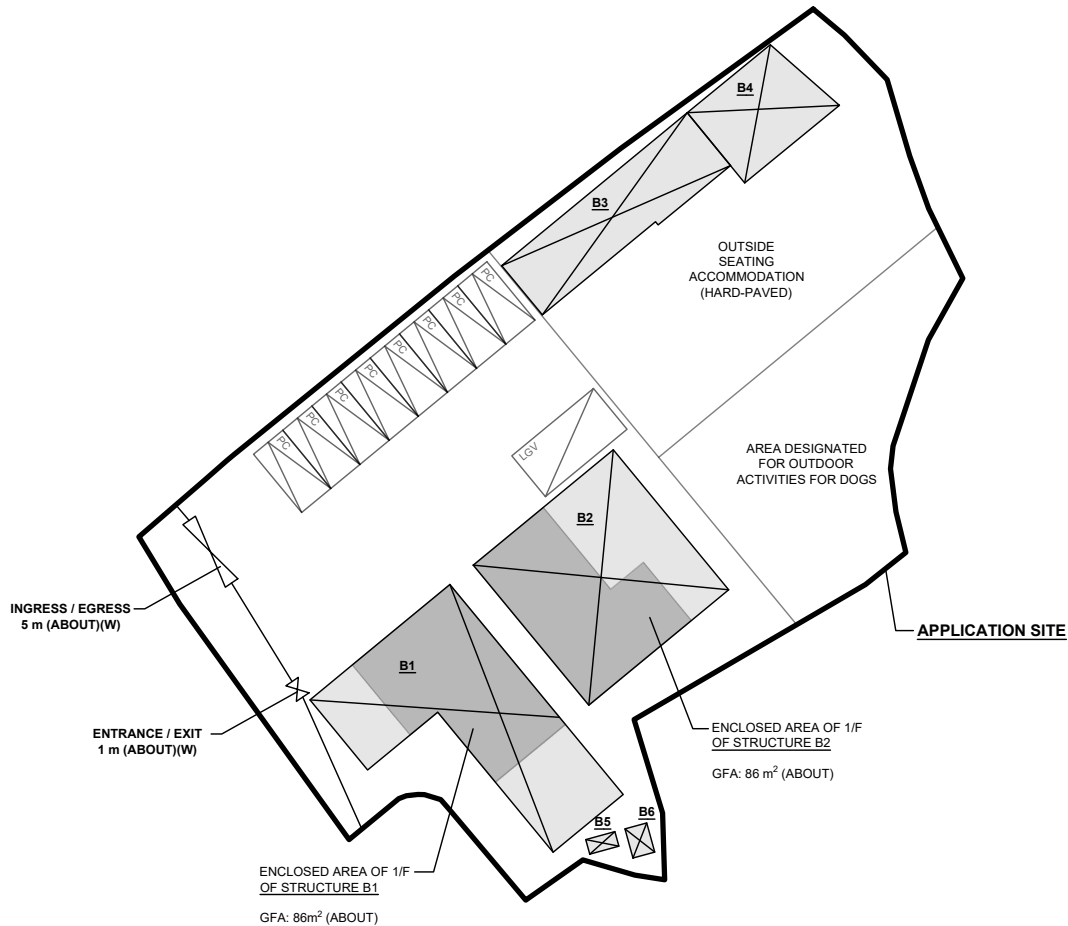
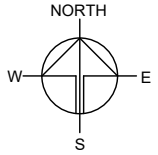
SCALE  
 1 : 500 @ A4  
 DRAWN BY MN DATE 26.11.2024  
 REVISED BY DATE  
 APPROVED BY DATE

DWG. TITLE  
 LAND STATUS OF THE SITE  
 DWG. NO. PLAN 3 VER. 001

**DEVELOPMENT PARAMETERS**

APPLICATION SITE AREA	: 1,757 m <sup>2</sup>	(ABOUT)
COVERED AREA	: 408 m <sup>2</sup>	(ABOUT)
UNCOVERED AREA	: 1,349 m <sup>2</sup>	(ABOUT)
PLOT RATIO	: 0.33	(ABOUT)
SITE COVERAGE	: 23%	(ABOUT)
NO. OF STRUCTURE	: 6	
DOMESTIC GFA	: NOT APPLICABLE	
NON-DOMESTIC GFA	: 580 m <sup>2</sup>	(ABOUT)
TOTAL GFA	: 580 m <sup>2</sup>	(ABOUT)
BUILDING HEIGHT	: 2.5 - 8 m	(ABOUT)
NO. OF STOREY	: 1 - 2	

STRUCTURE	USE	COVERED AREA	GROSS FLOOR AREA	BUILDING HEIGHT
B1	(G/F)	144 m <sup>2</sup> (ABOUT)	144 m <sup>2</sup> (ABOUT)	8 m (ABOUT)(2-STOREY)
B2	(1/F)	144 m <sup>2</sup> (ABOUT)	86 m <sup>2</sup> (ABOUT)	8 m (ABOUT)(2-STOREY)
B2	(G/F)	144 m <sup>2</sup> (ABOUT)	144 m <sup>2</sup> (ABOUT)	8 m (ABOUT)(2-STOREY)
B3	(1/F)	69 m <sup>2</sup> (ABOUT)	86 m <sup>2</sup> (ABOUT)	8 m (ABOUT)(2-STOREY)
B4		46 m <sup>2</sup> (ABOUT)	69 m <sup>2</sup> (ABOUT)	3.5 m (ABOUT)(1-STOREY)
B5		2 m <sup>2</sup> (ABOUT)	46 m <sup>2</sup> (ABOUT)	3.5 m (ABOUT)(1-STOREY)
B6		2 m <sup>2</sup> (ABOUT)	2 m <sup>2</sup> (ABOUT)	2.5 m (ABOUT)(1-STOREY)
B6		3 m <sup>2</sup> (ABOUT)	3 m <sup>2</sup> (ABOUT)	2.5 m (ABOUT)(1-STOREY)
<b>TOTAL</b>		<b>408 m<sup>2</sup> (ABOUT)</b>	<b>580 m<sup>2</sup> (ABOUT)</b>	



**PARKING AND LOADING/UNLOADING PROVISIONS**

NO. OF PRIVATE CAR PARKING SPACE	: 8
DIMENSION OF PARKING SPACE	: 5m (L) X 2.5m (W)
NO. OF L/UL SPACE FOR LIGHT GOODS VEHICLE	: 1
DIMENSION OF L/UL SPACE	: 7m (L) X 3.5m (W)

**LEGEND**

- APPLICATION SITE
- STRUCTURE
- PARKING SPACE (PRIVATE CAR)
- L/UL SPACE (LIGHT GOODS VEHICLE)
- INGRESS / EGRESS

PLANNING CONSULTANT



PROJECT

PROPOSED ANIMAL BOARDING ESTABLISHMENT AND EATING PLACE WITH ANCILLARY FACILITIES FOR A PERIOD OF 3 YEARS AND ASSOCIATED FILLING OF LAND

SITE LOCATION

LOT 1892 RP IN D.D. 106, PAT HEUNG, YUEN LONG, NEW TERRITORIES

SCALE

1 : 500 @ A4

DRAWN BY: MN DATE: 26.11.2024

CHECKED BY: DATE:

APPROVED BY: DATE:

DWG. TITLE  
LAYOUT PLAN

DWG NO.: PLAN 4 VER.: 001

**PAVED RATIO OF THE APPLICATION SITE**

APPLICATION SITE AREA : 1,757 m<sup>2</sup> (ABOUT)

**PROPOSED HARD-PAVED AREA**

AREA : 381 m<sup>2</sup> (ABOUT)  
 EXISTING SITE LEVEL : +15.4 mPD (ABOUT)  
 DEPTH OF FILLING : NOT MORE THAN 0.2 m  
 PAVED MATERIAL : CONCRETE  
 USE : OUTSIDE SEATING ACCOMMODATION

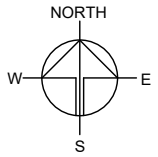
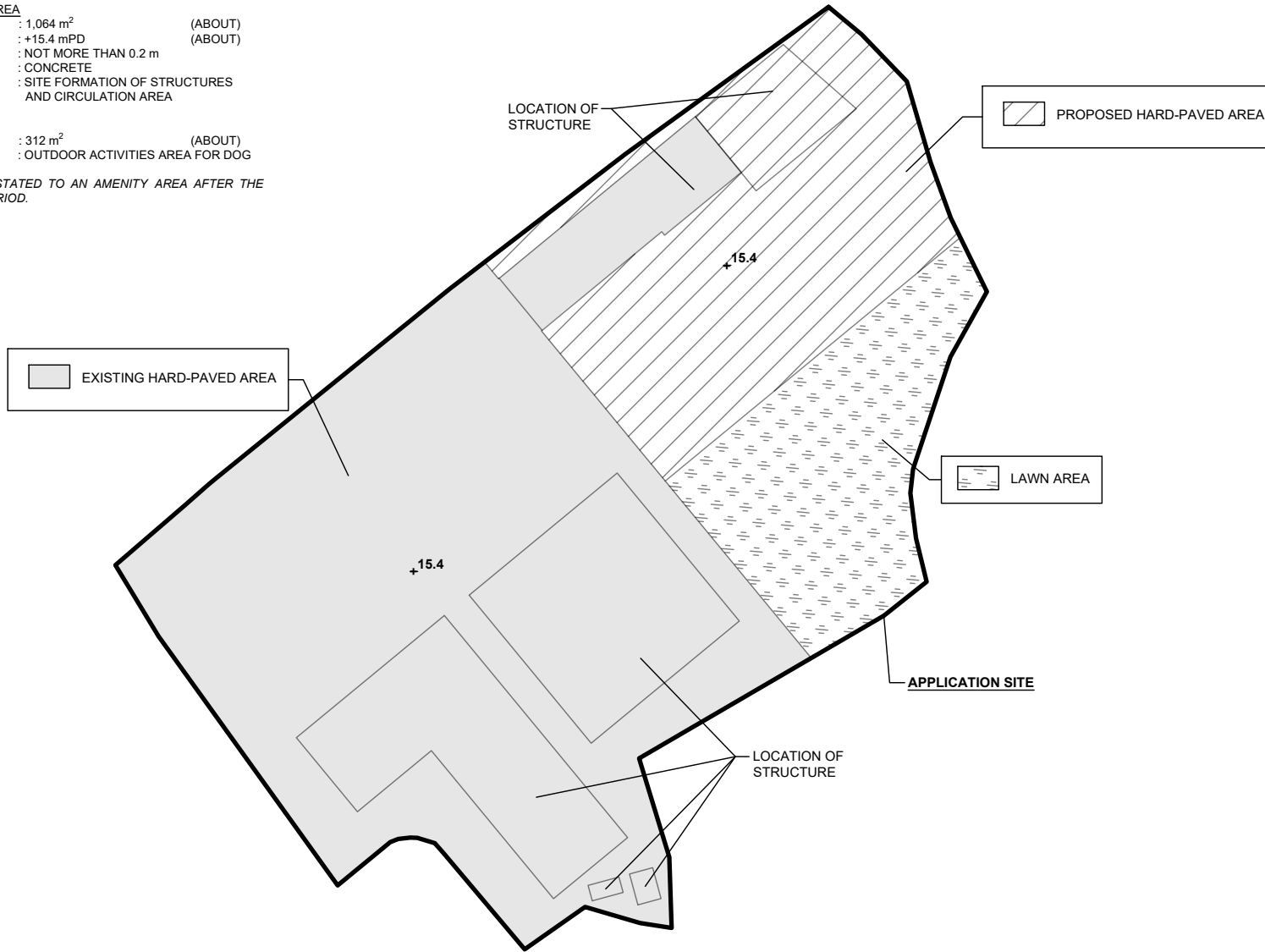
**EXISTING HARD-PAVED AREA**

AREA : 1,064 m<sup>2</sup> (ABOUT)  
 EXISTING SITE LEVEL : +15.4 mPD (ABOUT)  
 DEPTH OF FILLING : NOT MORE THAN 0.2 m  
 PAVED MATERIAL : CONCRETE  
 USE : SITE FORMATION OF STRUCTURES AND CIRCULATION AREA

**LAWN AREA**

AREA : 312 m<sup>2</sup> (ABOUT)  
 USE : OUTDOOR ACTIVITIES AREA FOR DOG

THE SITE WILL BE REINSTATED TO AN AMENITY AREA AFTER THE PLANNING APPROVAL PERIOD.



SITE BOUNDARY FOR IDENTIFICATION PURPOSE.

PLANNING CONSULTANT



PROJECT

PROPOSED ANIMAL BOARDING ESTABLISHMENT PLACE WITH ANCILLARY FACILITIES FOR A PERIOD OF 3 YEARS AND ASSOCIATED FILLING OF LAND

SITE LOCATION

LOT 1892 RP IN D.D. 106, PAT HEUNG, YUEN LONG, NEW TERRITORIES

SCALE

1 : 400 @ A4

DRAWN BY: MN DATE: 26.11.2024

REVISED BY: DATE:

APPROVED BY: DATE:

**LEGEND**

- APPLICATION SITE
- +14.7** SITE LEVELS

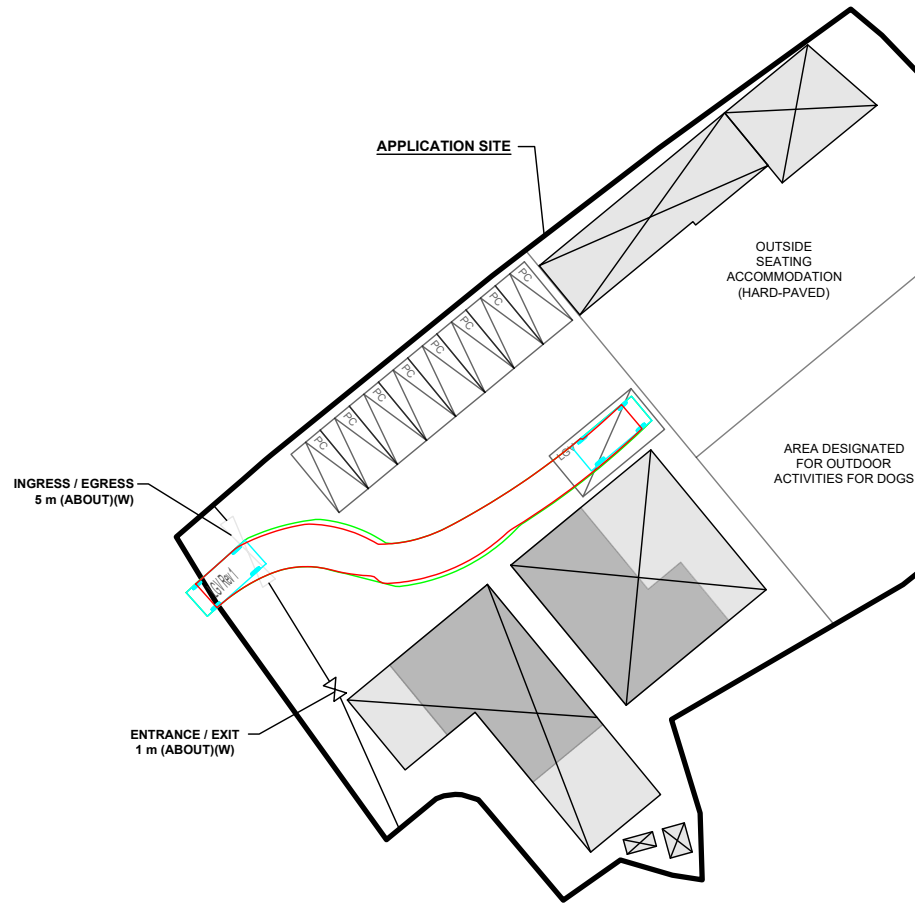
DWG. TITLE  
FILLING OF LAND AREA

DWG NO. PLAN 5 VER. 001

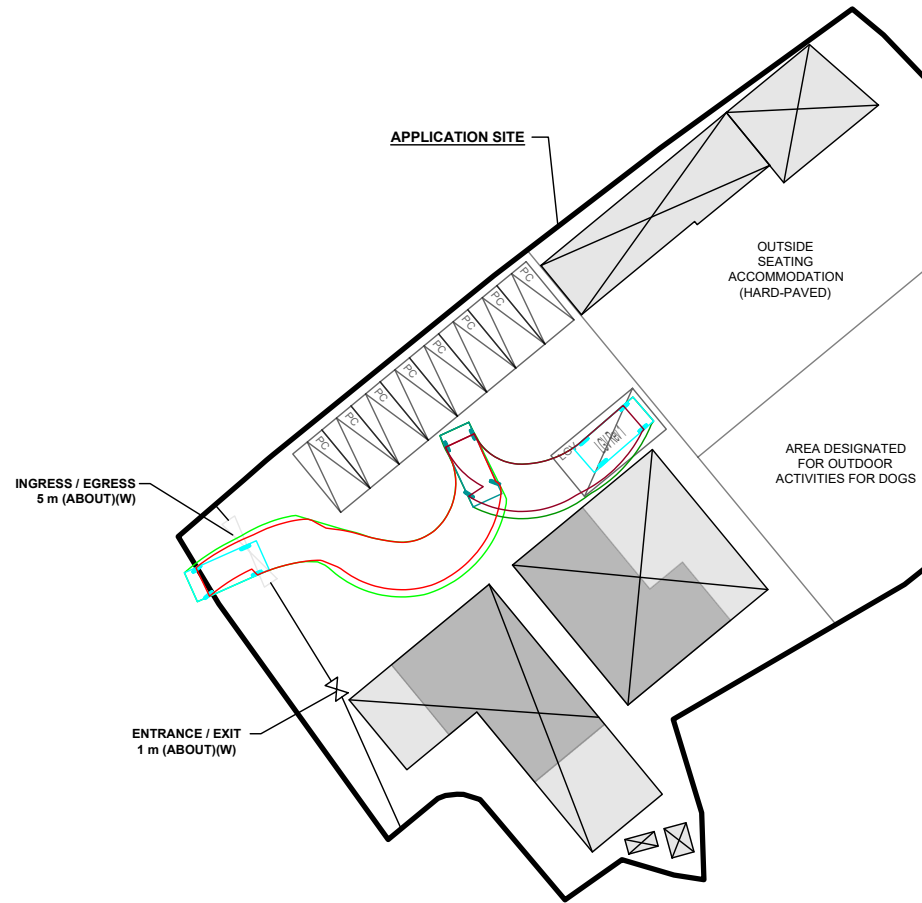
**SWEPT PATH ANALYSIS**

TYPE OF VEHICLE : LIGHT GOODS VEHICLE  
 DIMENSION OF VEHICLE : 2.1 m (W) X 5.2 m (L)

SWEPT PATHS GENERATED BY AUTODESK VEHICLE TRACKING



**FROM THE LOCAL ACCESS TO THE APPLICATION SITE**

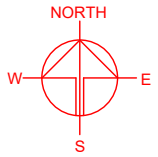


**FROM THE APPLICATION SITE TO THE LOCAL ACCESS**

**LEGEND**

- APPLICATION SITE
- STRUCTURE
- PARKING SPACE (PRIVATE CAR)
- L/U/L SPACE (LIGHT GOODS VEHICLE)
- INGRESS / EGRESS
- LIGHT GOODS VEHICLE
- SWEEP PATH ANALYSIS

SITE BOUNDARY FOR IDENTIFICATION PURPOSE.



PLANNING CONSULTANT



PROJECT

PROPOSED ANIMAL BOARDING ESTABLISHMENT AND EATING PLACE WITH ANCILLARY FACILITIES FOR A PERIOD OF 3 YEARS AND ASSOCIATED FILLING OF LAND

SITE LOCATION

LOT 1892 RP IN D.D. 106, PAT HEUNG, YUEN LONG, NEW TERRITORIES

SCALE

1 : 500 @ A4

DRAWN BY

MN

DATE

26.11.2024

CHECKED BY

DATE

APPROVED BY

DATE

DWG. TITLE

SWEPT PATH ANALYSIS

DWG NO.

PLAN 6

VER.

001