

LEGEND

- CP Proposed CatchPit
- (a) Proposed 450UC (1:100) with Cast Iron Cover
- (c) Existing 450UC

Total Area = 3009+1538 sq.m.
= 4547sq.m.

$$Q = 0.278 \times 0.95 \times 250 \times \frac{4547}{1000000}$$

$$= 0.300 \text{ m}^3/\text{hr}$$

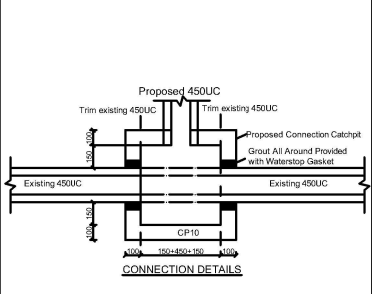
$$= 18013 \text{ lit}/\text{min}$$

Provide 450UC(1:100) is OK

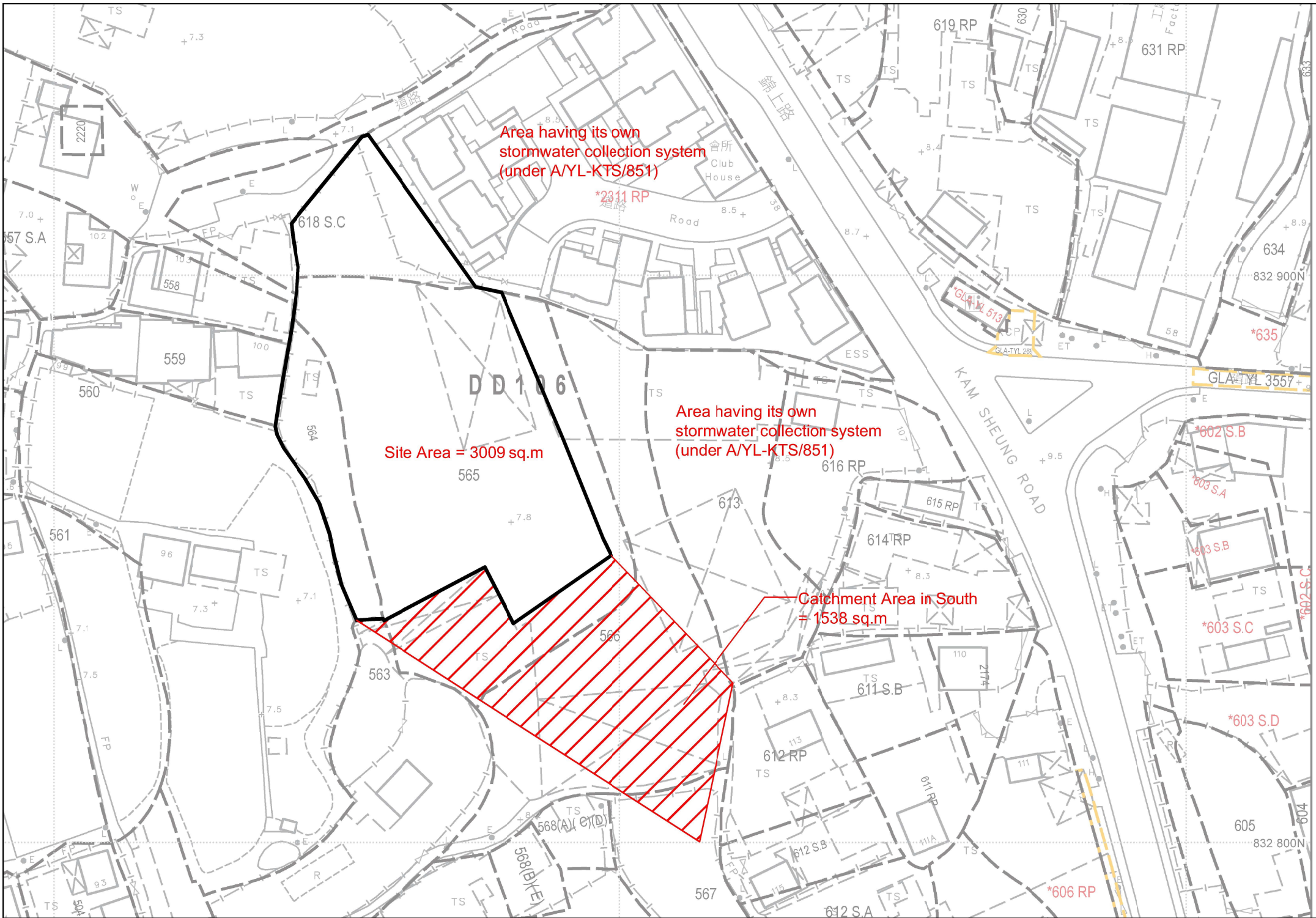
PROPOSED TEMPORARY SHOP AND SERVICES (VEHICLE SHOWROOM) FOR A PERIOD OF 3 YEARS

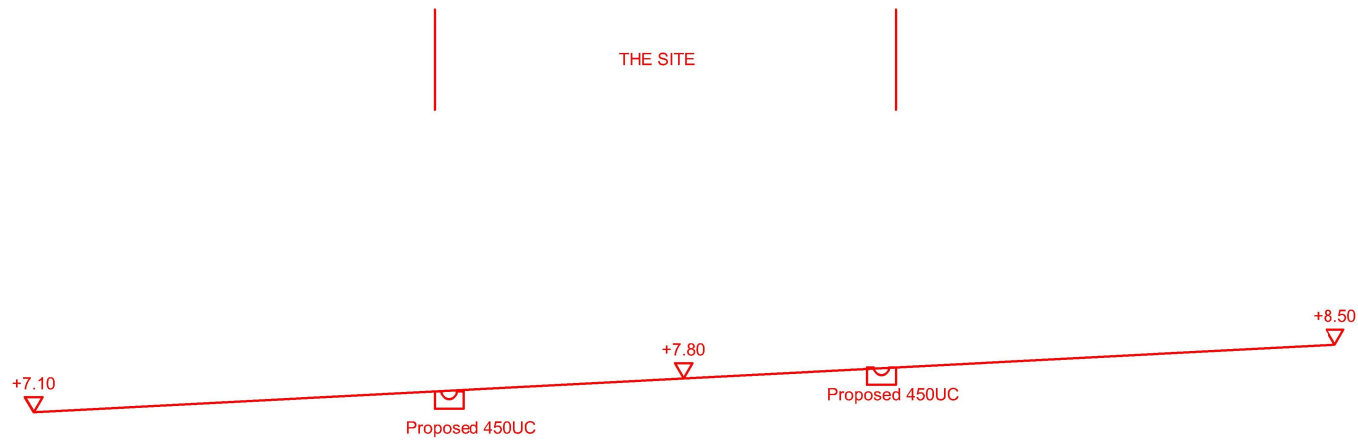
VARIOUS LOTS IN D.D. 106, KAM SHEUNG ROAD, YUEN LONG, NEW TERRITORIES (A/YL-KTS/956)

DATE: 24-11-2023

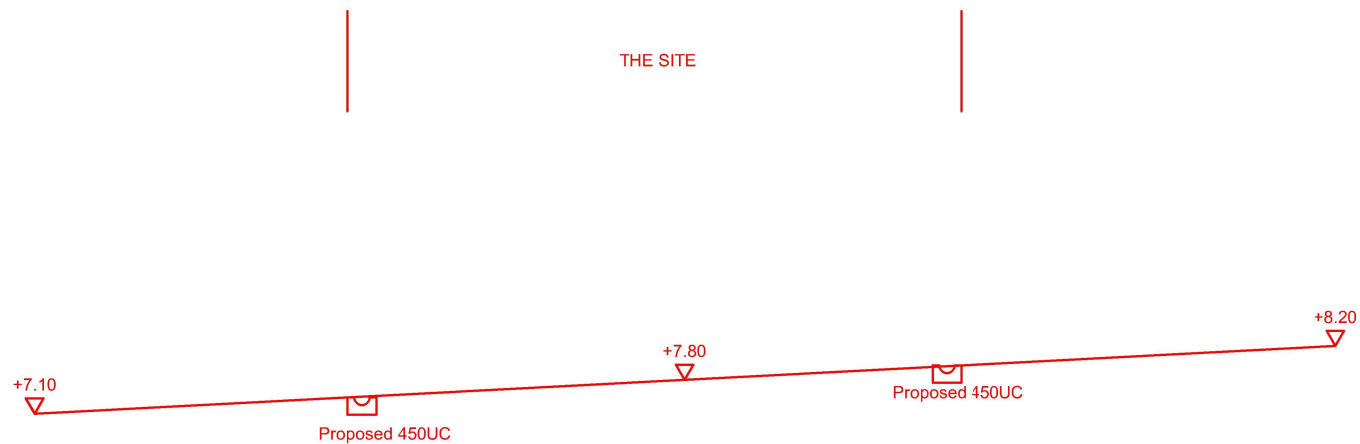


CONNECTION DETAILS





SECTION A-A



SECTION B-B

LEGEND

- CP Proposed CatchPit
- (a) Proposed 450UC (1:100) with Cast Iron Cover
- (c) Existing 450UC

Total Area = 3009+1538 sq.m.
= 4547sq.m.

$$Q = 0.278 \times 0.95 \times 250 \times \frac{4547}{1000000}$$

$$= 0.300 \text{ m}^3/\text{hr}$$

$$= 18013 \text{ lit/min}$$

Provide 450UC(1:100) is OK

PROPOSED TEMPORARY SHOP AND SERVICES (VEHICLE SHOWROOM) FOR A PERIOD OF 3 YEARS

VARIOUS LOTS IN D.D. 106, KAM SHEUNG ROAD, YUEN LONG, NEW TERRITORIES (A/YL-KTS/956)

DATE: 6-8-2023

SECTIONS

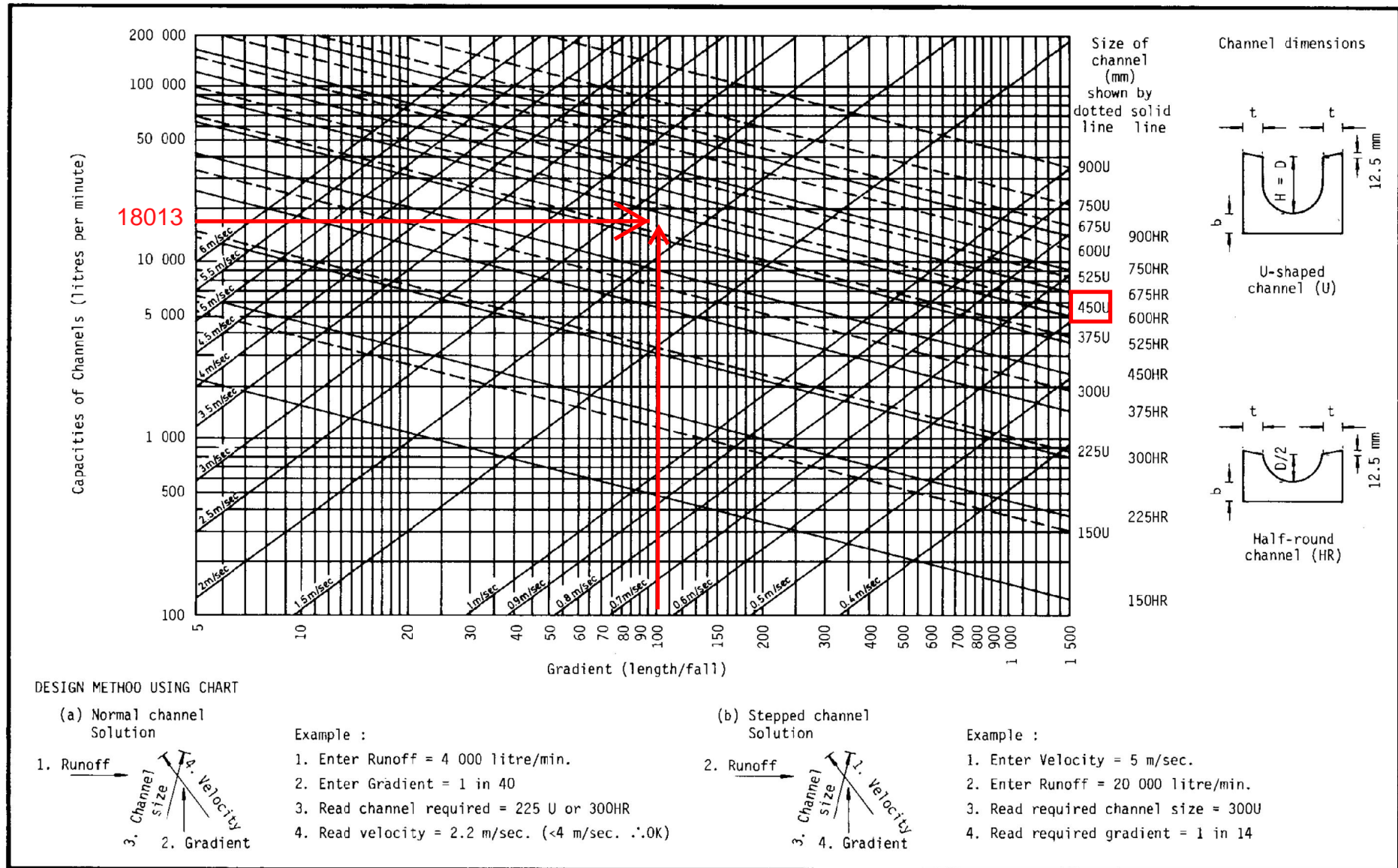
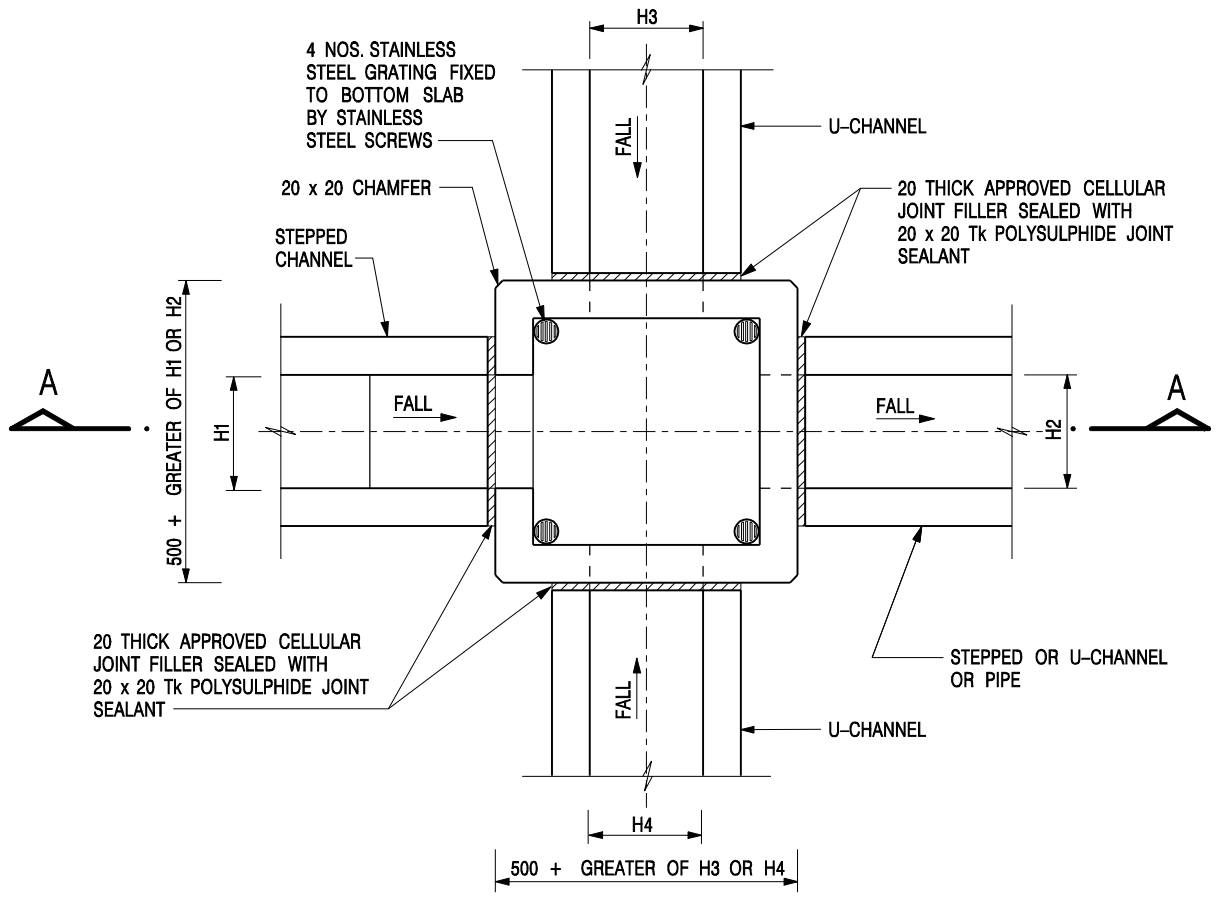
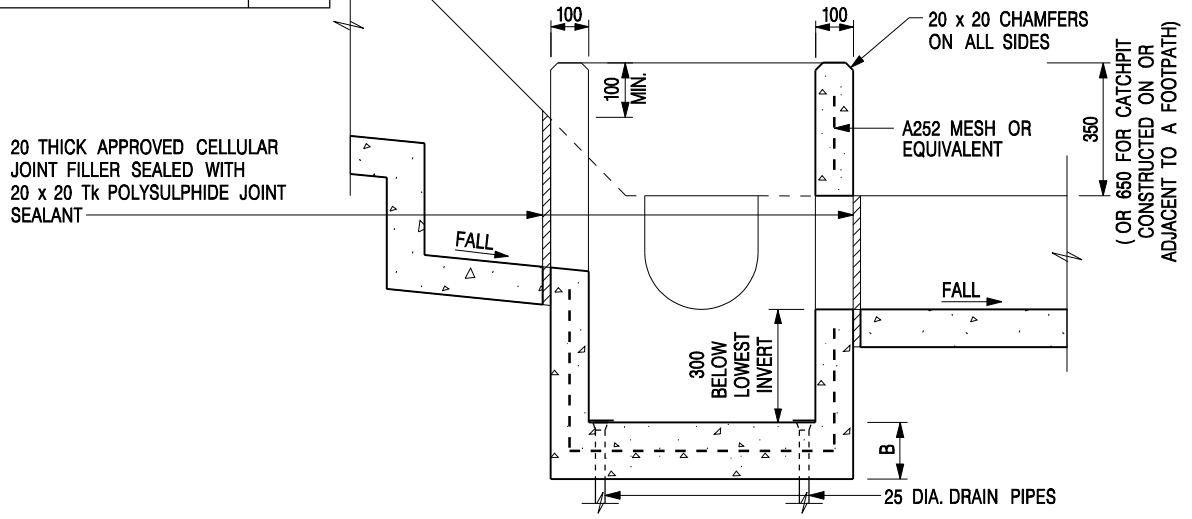


Figure 8.7 - Chart for the Rapid Design of Channels



NOMINAL SIZE (LARGEST OF H1, H2, H3 & H4)	B
300 - 600	150
675 - 900	175



SECTION A - A

NOTES:

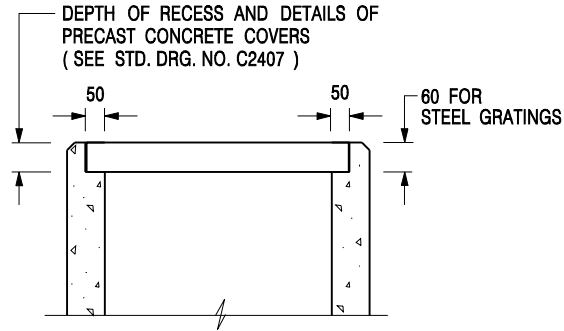
1. ALL DIMENSIONS ARE IN MILLIMETRES.
2. REFER TO SHEET 2 FOR OTHER NOTES.

**CATCHPIT WITH TRAP
(SHEET 1 OF 2)**

-	FORMER DRG. NO. C2406J.	Original Signed	03.2015
REF.	REVISION	SIGNATURE	DATE

CEDD **CIVIL ENGINEERING AND DEVELOPMENT DEPARTMENT**

SCALE 1 : 20	DRAWING NO.
DATE JAN 1991	C2406 /1




**ALTERNATIVE TOP SECTION
FOR PRECAST CONCRETE COVERS / GRATINGS**

NOTES:

1. ALL DIMENSIONS ARE IN MILLIMETRES.
2. ALL CONCRETE SHALL BE GRADE 20 /20.
3. CONCRETE SURFACE FINISH SHALL BE CLASS U2 OR F2 AS APPROPRIATE.
4. FOR DETAILS OF JOINT, REFER TO STD. DRG. NO. C2413.
5. CONCRETE TO BE COLOURED AS SPECIFIED.
6. UNLESS REQUESTED BY THE MAINTENANCE PARTY AND AS DIRECTED BY THE ENGINEER, CATCHPIT WITH TRAP IS NORMALLY NOT PREFERRED DUE TO PONDING PROBLEM.
7. UPON THE REQUEST FROM MAINTENANCE PARTY, DRAIN PIPES AT CATCHPIT BASE CAN BE USED BUT THIS IS FOR CATCHPITS LOCATED AT SLOPE TOE ONLY AND AS DIRECTED BY THE ENGINEER.
8. FOR CATCHPITS CONSTRUCTED ON OR ADJACENT TO A FOOTPATH, STEEL GRATINGS (SEE DETAIL 'A' ON STD. DRG. NO. C2405) OR CONCRETE COVERS (SEE STD. DRG. NO. C2407) SHALL BE PROVIDED AS DIRECTED BY THE ENGINEER.
9. IF INSTRUCTED BY THE ENGINEER, HANDRAILING (SEE DETAIL 'G' ON STD. DRG. NO. C2405; EXCEPT ON THE UPSLOPE SIDE) IN LIEU OF STEEL GRATINGS OR CONCRETE COVERS CAN BE ACCEPTED AS AN ALTERNATIVE SAFETY MEASURE FOR CATCHPITS NOT ON A FOOTPATH NOR ADJACENT TO IT. TOP OF THE HANDRAILING SHALL BE 1 000 mm MIN. MEASURED FROM THE ADJACENT GROUND LEVEL.
10. MINIMUM INTERNAL CATCHPIT WIDTH SHALL BE 1 000 mm FOR CATCHPITS WITH A HEIGHT EXCEEDING 1 000 mm MEASURED FROM THE INVERT LEVEL TO THE ADJACENT GROUND LEVEL. AND, STEP IRONS (SEE DSD STD. DRG. NO. DS1043) AT 300 c/c STAGGERED SHALL BE PROVIDED. THICKNESS OF CATCHPIT WALL FOR INSTALLATION OF STEP IRONS SHALL BE INCREASED TO 150 mm.
11. FOR RETROFITTING AN EXISTING CATCHPIT WITH STEEL GRATING, SEE DETAIL 'F' ON STD. DRG. NO. C2405.
12. SUBJECT TO THE APPROVAL OF THE ENGINEER, OTHER MATERIALS CAN ALSO BE USED AS COVERS / GRATINGS.

-	FORMER DRG. NO. C2406J.	Original Signed	03.2015
REF.	REVISION	SIGNATURE	DATE

**CATCHPIT WITH TRAP
(SHEET 2 OF 2)**

 CIVIL ENGINEERING AND DEVELOPMENT DEPARTMENT	
SCALE 1 : 20	DRAWING NO.
DATE JAN 1991	C2406 /2

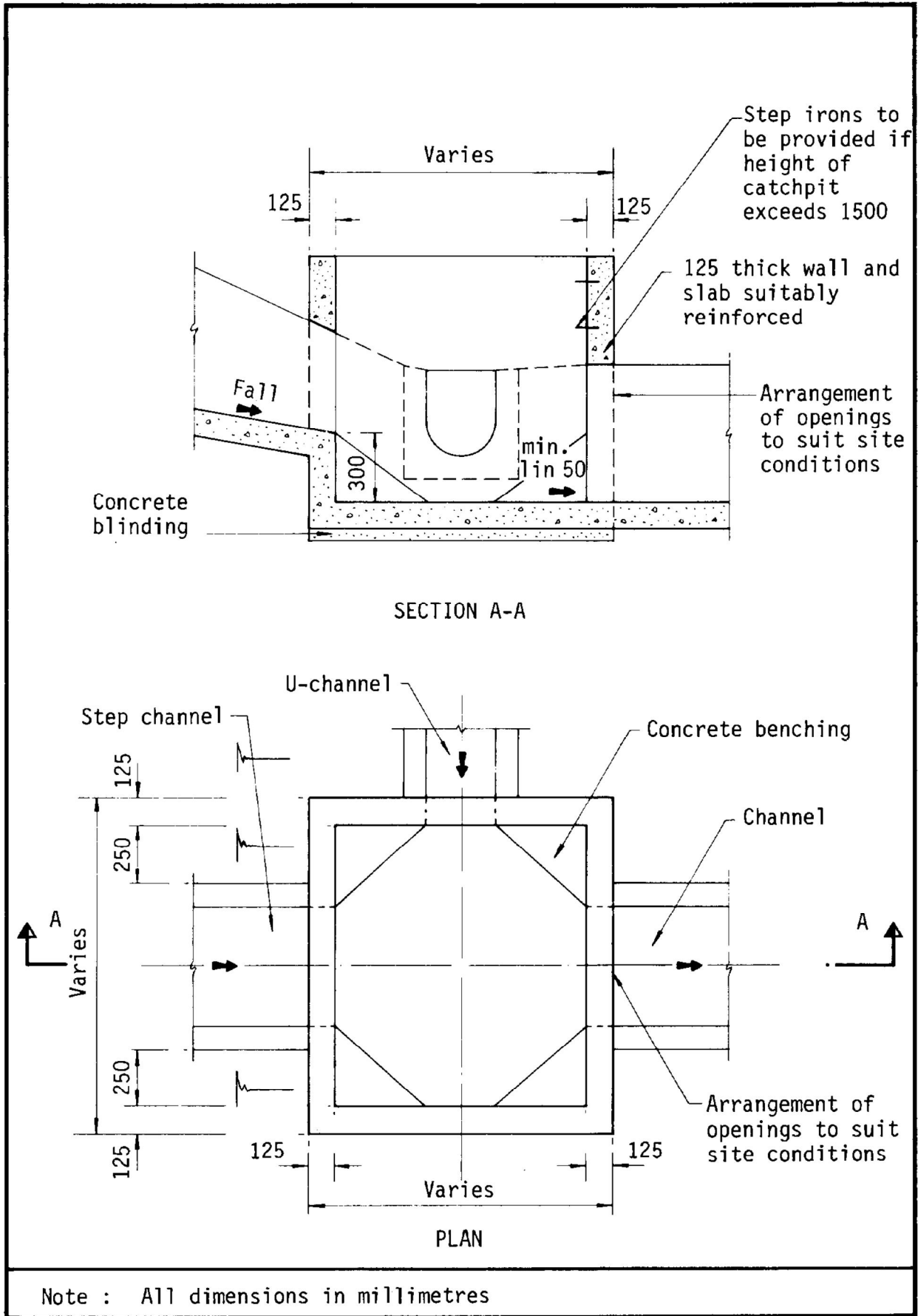
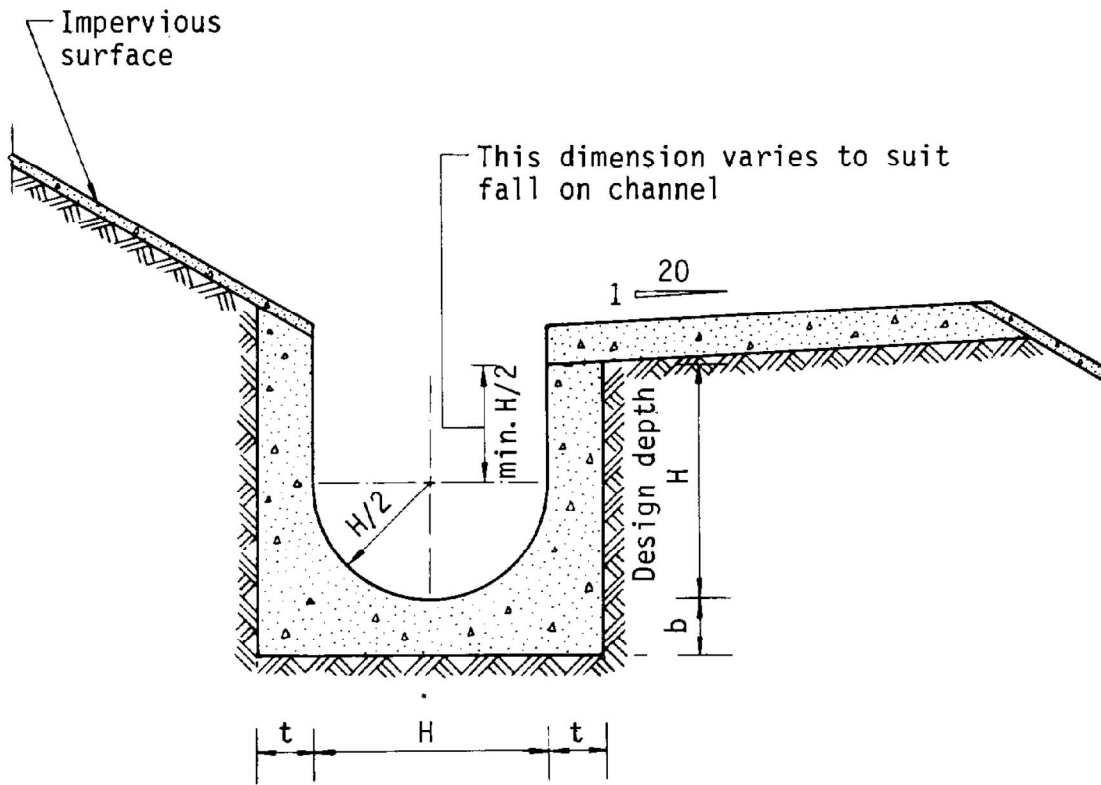


Figure 8.10 - Typical Details of Catchpits



Dimensions of U - channel

Nominal size of channel H (mm)	Thickness t (mm)	Thickness b (mm)
225 to 600	150	150
675 to 1200	175	225

Figure 8.11 - Typical U-channel Details

DEVELOPMENT PARAMETERS

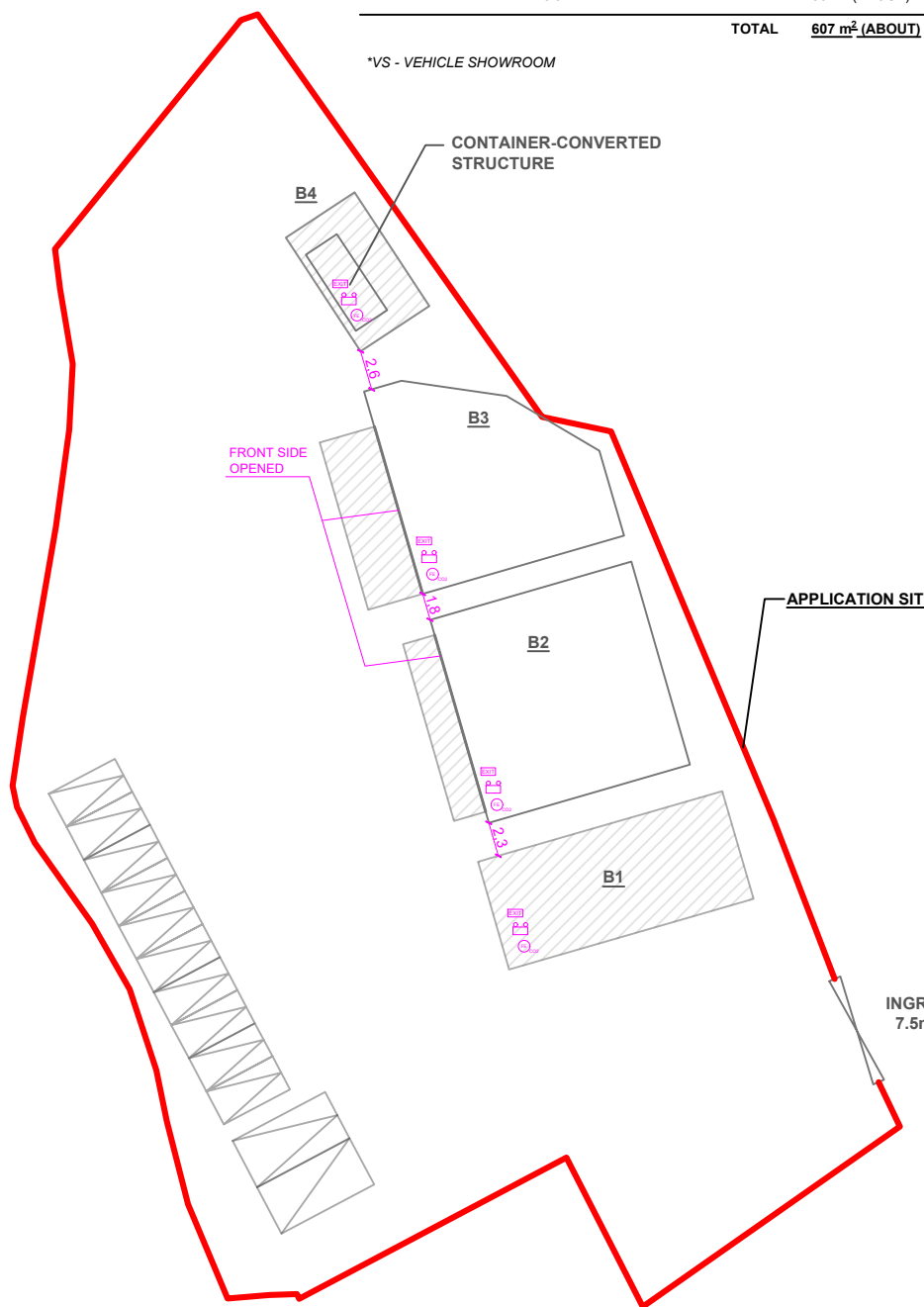
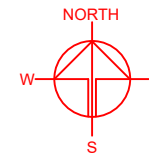
APPLICATION SITE AREA	: 3,009 m ²	(ABOUT)
COVERED AREA	: 607 m ²	(ABOUT)
UNCOVERED AREA	: 2,402 m ²	(ABOUT)
PLOT RATIO	: 0.2	(ABOUT)
SITE COVERAGE	: 20 %	(ABOUT)
NO. OF STRUCTURE	: 4	
DOMESTIC GFA	: N/A	
NON-DOMESTIC GFA	: 607 m ²	(ABOUT)
BUILDING HEIGHT	: 4 - 7.5 m	(ABOUT)
NO. OF STOREY	: 1	

PARKING AND LOADING / UNLOADING PROVISIONS




NO. OF PRIVATE CAR	
PARKING SPACE	: 10
DIMENSION OF PARKING SPACE	: 5 m (L) X 2.5 m (W)
NO. OF LIGHT GOODS VEHICLE SPACE	: 1
DIMENSION OF PARKING SPACE	: 7 m (L) X 3.5m (W)
NO. OF L/UL SPACE FOR LIGHT GOODS VEHICLE	: 1
DIMENSION OF L/UL SPACE	: 7 m (L) X 3.5m (W)

STRUCTURE	USE	COVERED AREA	GFA	BUILDING HEIGHT
B1	SHOP AND SERVICES (VS*)	128 m ² (ABOUT)	128 m ² (ABOUT)	7.5 m (ABOUT)(1-STOREY)
B2	SHOP AND SERVICES (VS*) AND OFFICE	225 m ² (ABOUT)	225 m ² (ABOUT)	7.5 m (ABOUT)(1-STOREY)
B3	SHOP AND SERVICES (VS*) AND OFFICE	204 m ² (ABOUT)	204m ² (ABOUT)	7.5 m (ABOUT)(1-STOREY)
B4	WASHROOM AND RAIN SHELTER	50 m ² (ABOUT)	50 m ² (ABOUT)	4 m (ABOUT)(1-STOREY)
TOTAL		607 m² (ABOUT)	607 m² (ABOUT)	

*VS - VEHICLE SHOWROOM









FIRE SERVICE INSTALLATIONS

-  4 x EXIT SIGN
-  4 x EMERGENCY LIGHT
-  4 x 4.5 KG GAS-TYPE FIRE EXTINGUISHER

FS NOTES:

- SUFFICIENT EMERGENCY LIGHTING SHALL BE PROVIDED THROUGHOUT THE ENTIRE BUILDING IN ACCORDANCE WITH BS5266-1:2016 AND BS EN1838:2013 AND THE FSD CL NO. 4/2021.
- SUFFICIENT DIRECTIONAL AND EXIT SIGN SHALL BE PROVIDED IN ACCORDANCE WITH BS5266: PART 1 AND FSD CIRCULAR LETTER 5/2008.
- PORTABLE HAND-OPERATED APPROVED APPLIANCE SHALL BE PROVIDED AS REQUIRED BY OCCUPANCY.
- ACCESS IS PROVIDED FOR EMERGENCY VEHICLE TO REACH 30m OF ALL PART OF STRUCTURES.

LEGEND

-  APPLICATION SITE
-  STRUCTURE (PARTIALLY ENCLOSED)
-  STRUCTURE (CANOPY)
-  PARKING SPACE
-  LOADING / UNLOADING SPACE
-  INGRESS / EGRESS

PLANNING CONSULTANT



PROJECT

PROPOSED TEMPORARY SHOP AND SERVICES (VEHICLE SHOWROOM) FOR A PERIOD OF 3 YEARS

SITE LOCATION

VARIOUS LOTS IN D.D. 106, KAM SHEUNG ROAD, YUEN LONG, NEW TERRITORIES

SCALE

1 : 500 @ A4

DRAWN BY OL DATE 12.9.2023

REVISED BY DATE

APPROVED BY DATE

DWG. TITLE

FSIs PROPOSAL

DWG NO. VER.

APPENDIX II

001

TREE PRESERVATION AND LANDSCAPE PROPOSAL

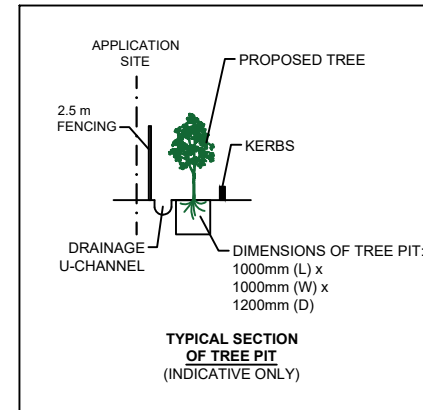
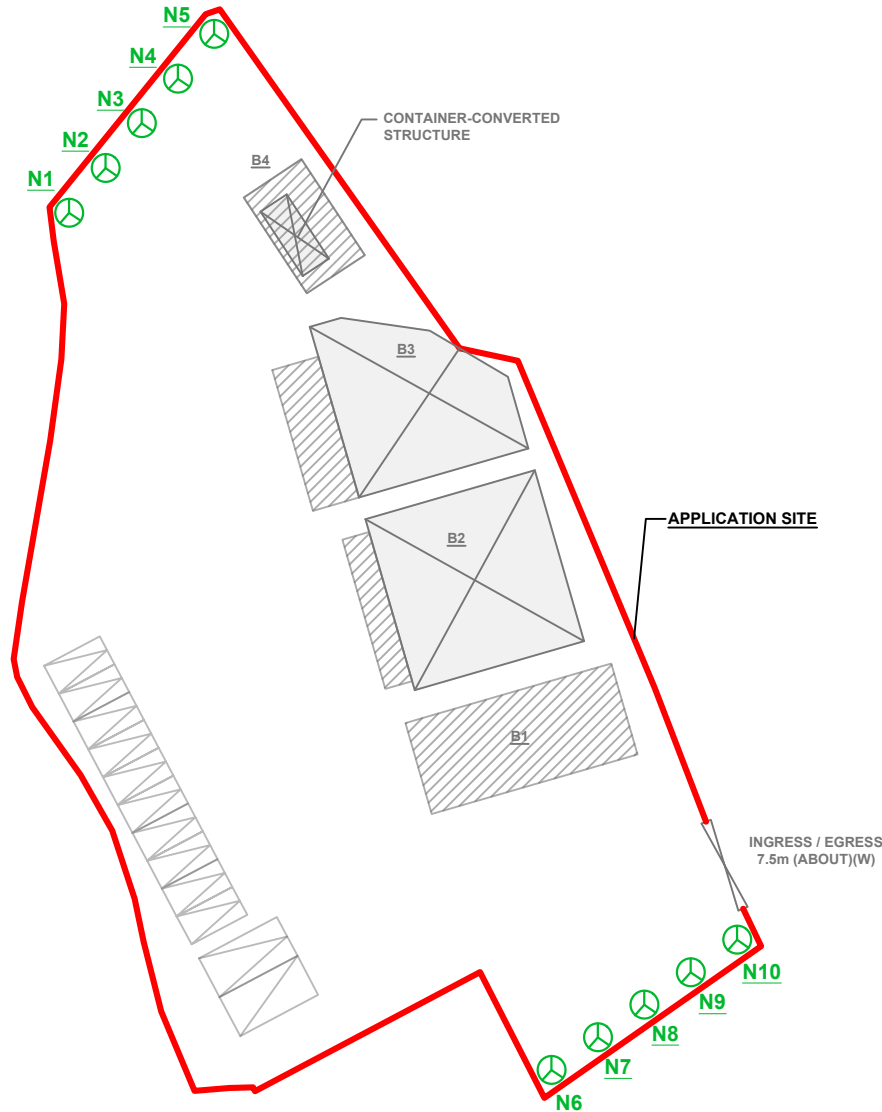
APPLICATION SITE AREA : 3,009 m² (ABOUT)

NO. OF EXISTING TREE : N/A
 SPECIES OF TREES : N/A
 NO. OF TREES WILL BE FELLED : N/A

NO. OF NEW TREES WILL BE PLANTED : 10 (N1 TO N10)
 SPECIES OF NEW TREES : BAUHINIA BLAKEANA
 HEIGHT OF NEW TREES : NO LESS THAN 2.75 m
 SPACING OF NEW TREES : NOT MORE THAN 4 m
 DIMENSION OF TREE PITS : 1 m (W) X 1 m (L) X 1.2 m (D)

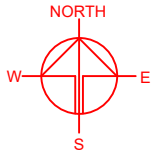
STRUCTURE	USE	COVERED AREA	GFA	BUILDING HEIGHT
B1	SHOP AND SERVICES (VS*)	128 m ² (ABOUT)	128 m ² (ABOUT)	7.5 m (ABOUT)(1-STOREY)
B2	SHOP AND SERVICES (VS*) AND OFFICE	225 m ² (ABOUT)	225 m ² (ABOUT)	7.5 m (ABOUT)(1-STOREY)
B3	SHOP AND SERVICES (VS*) AND OFFICE	204 m ² (ABOUT)	204 m ² (ABOUT)	7.5 m (ABOUT)(1-STOREY)
B4	WASHROOM AND RAIN SHELTER	50 m ² (ABOUT)	50 m ² (ABOUT)	4 m (ABOUT)(1-STOREY)
TOTAL		607 m² (ABOUT)	607 m² (ABOUT)	

*VS - VEHICLE SHOWROOM



LEGEND

- APPLICATION SITE
- STRUCTURE (PARTIALLY ENCLOSED)
- STRUCTURE (CANOPY)
- PARKING SPACE
- LOADING / UNLOADING SPACE
- INGRESS / EGRESS



PLANNING CONSULTANT



PROJECT

PROPOSED TEMPORARY SHOP AND SERVICES (VEHICLE SHOWROOM) FOR A PERIOD OF 3 YEARS

SITE LOCATION

VARIOUS LOTS IN D.D. 106, KAM SHEUNG ROAD, YUEN LONG, NEW TERRITORIES

SCALE

1 : 600 @ A4

DRAWN BY OL DATE 05.12.2023

REVISED BY DATE

APPROVED BY DATE

DWG. TITLE
LANDSCAPE PROPOSAL

DWG NO. APPENDIX III VER. 001