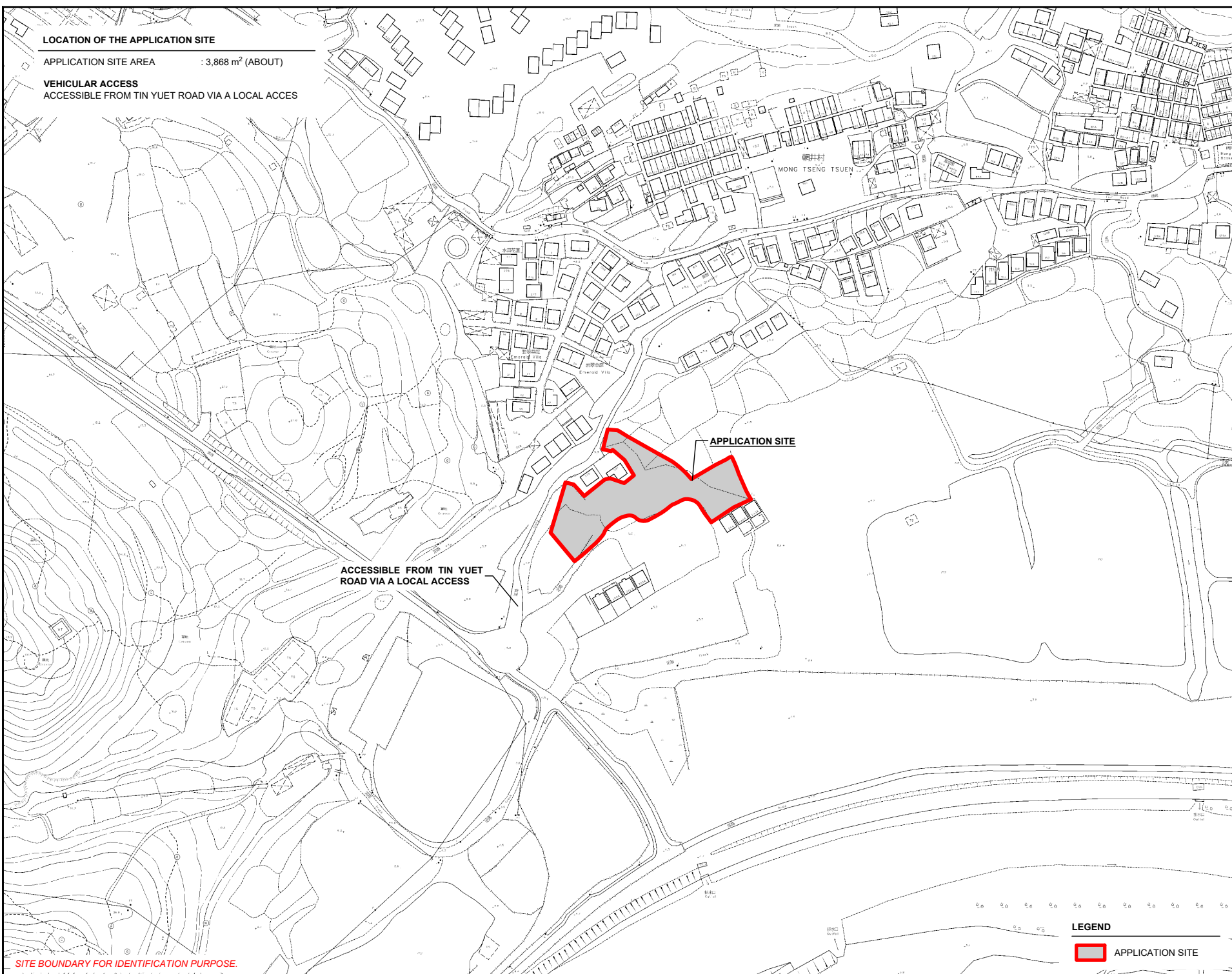
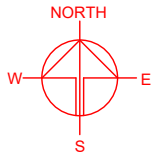


**LOCATION OF THE APPLICATION SITE**

APPLICATION SITE AREA : 3,868 m<sup>2</sup> (ABOUT)

**VEHICULAR ACCESS**  
ACCESSIBLE FROM TIN YUET ROAD VIA A LOCAL ACCESS



APPLICATION SITE

ACCESSIBLE FROM TIN YUET ROAD VIA A LOCAL ACCESS

SITE BOUNDARY FOR IDENTIFICATION PURPOSE.

PLANNING CONSULTANT

PROJECT  
PROPOSED PUBLIC VEHICLE PARK (EXCLUDING CONTAINER VEHICLE) AND SHOP AND SERVICES WITH ANCILLARY FACILITIES FOR A PERIOD OF 5 YEARS AND ASSOCIATED FILLING OF LAND

SITE LOCATION  
VARIOUS LOTS IN D.D. 129, LAU FAU SHAN, YUEN LONG, NEW TERRITORIES

SCALE  
1 : 3000 @ A4

DRAWN BY MN	DATE 9.8.2024
----------------	------------------

REVISED BY	DATE
------------	------

APPROVED BY	DATE
-------------	------

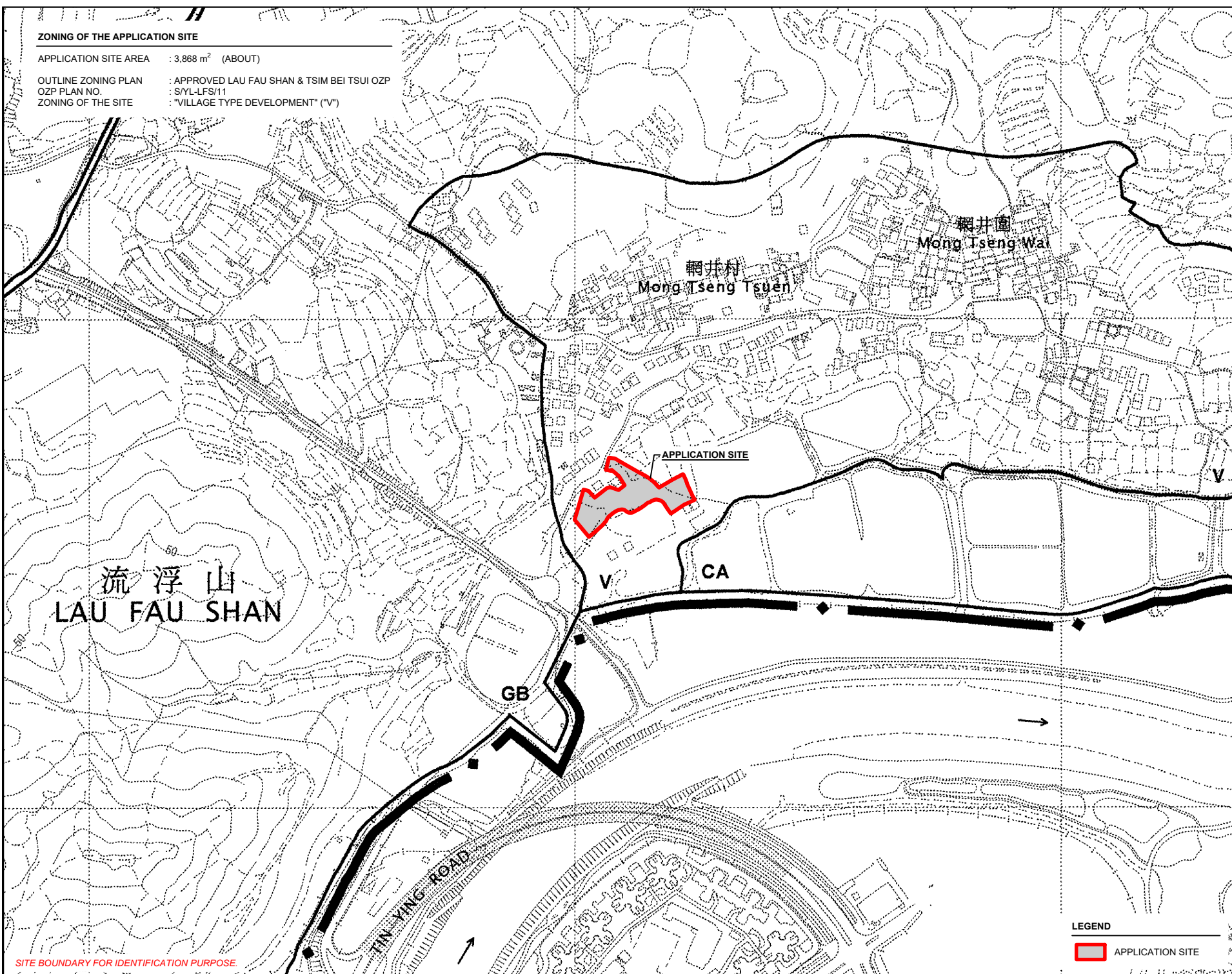
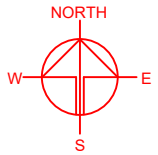
DWG. TITLE  
LOCATION PLAN

DWG NO. PLAN 1	VER. 001
-------------------	-------------

**LEGEND**  
 APPLICATION SITE

**ZONING OF THE APPLICATION SITE**

APPLICATION SITE AREA : 3,868 m<sup>2</sup> (ABOUT)  
 OUTLINE ZONING PLAN : APPROVED LAU FAU SHAN & TSIM BEI TSUI OZP  
 OZP PLAN NO. : S/YL-LFS/11  
 ZONING OF THE SITE : "VILLAGE TYPE DEVELOPMENT" ("V")



PLANNING CONSULTANT  
 R-Riches  
 Property Consultants Ltd.

PROJECT  
 PROPOSED TEMPORARY PUBLIC VEHICLE PARK (EXCLUDING CONTAINER VEHICLE) AND SHOP AND SERVICES WITH ANCILLARY FACILITIES FOR A PERIOD OF 5 YEARS AND ASSOCIATED FILLING OF LAND

SITE LOCATION  
 VARIOUS LOTS IN D.D. 129, LAU FAU SHAN, YUEN LONG, NEW TERRITORIES

SCALE  
 1 : 5000 @ A4

DRAWN BY MN	DATE 9.8.2024
REVISED BY	DATE

APPROVED BY	DATE
-------------	------

DWG. TITLE  
 ZONING OF THE SITE

DWG NO. PLAN 2	VER. 001
-------------------	-------------

**LEGEND**  
 APPLICATION SITE

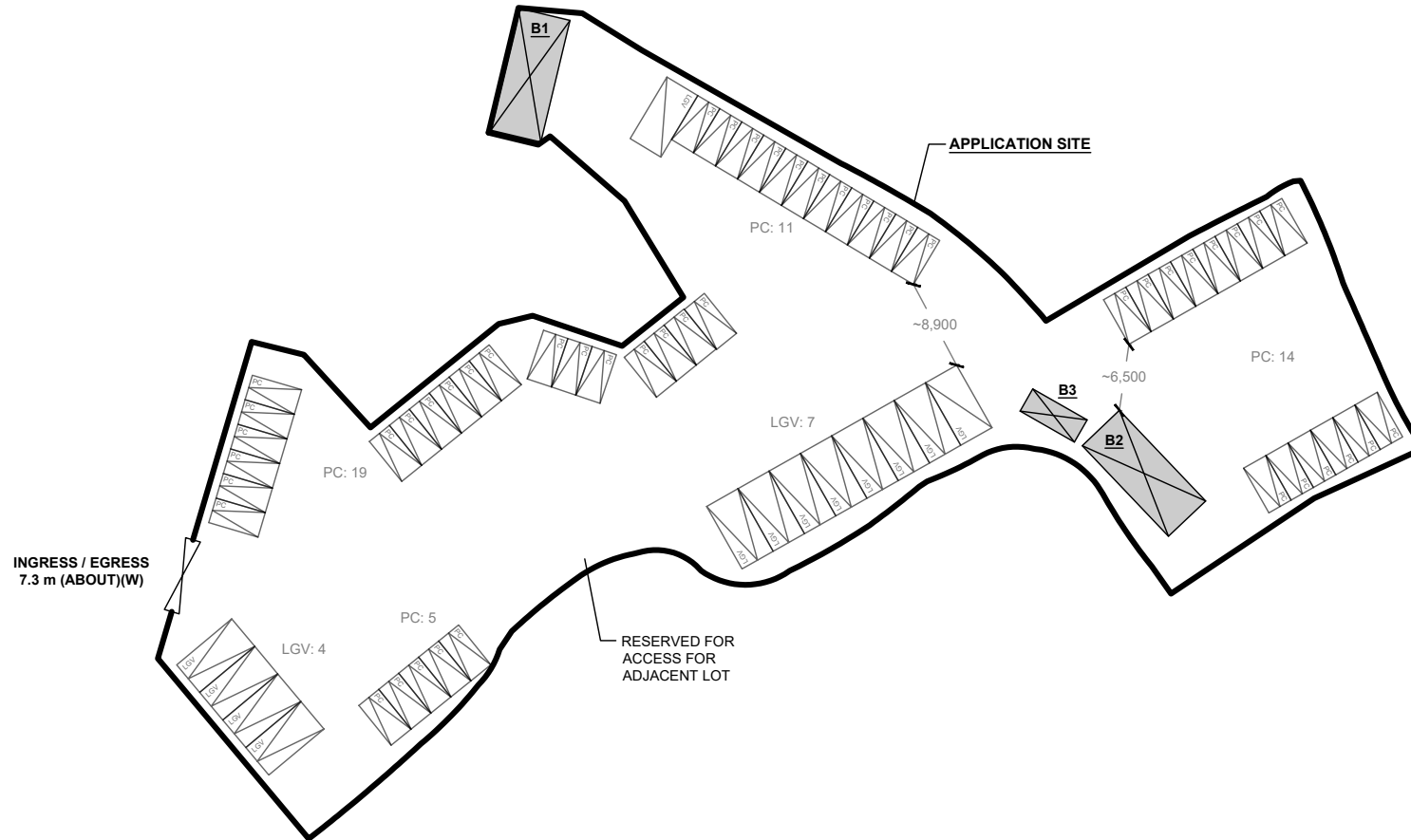
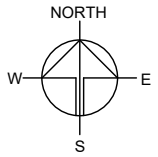
SITE BOUNDARY FOR IDENTIFICATION PURPOSE.



**DEVELOPMENT PARAMETERS**

APPLICATION SITE AREA	: 3,868 m <sup>2</sup>	(ABOUT)
COVERED AREA	: 137 m <sup>2</sup>	(ABOUT)
UNCOVERED AREA	: 3,731 m <sup>2</sup>	(ABOUT)
PLOT RATIO	: 0.04	(ABOUT)
SITE COVERAGE	: 3.5 %	(ABOUT)
NO. OF STRUCTURE	: 3	
DOMESTIC GFA	: NOT APPLICABLE	
NON-DOMESTIC GFA	: 137 m <sup>2</sup>	(ABOUT)
TOTAL GFA	: 137 m <sup>2</sup>	(ABOUT)
BUILDING HEIGHT	: 3.5 m	(ABOUT)
NO. OF STOREY	: 1	

STRUCTURE	USE	COVERED AREA	GFA	BUILDING HEIGHT
B1	SHOP AND SERVICES AND SITE OFFICE	61 m <sup>2</sup> (ABOUT)	61 m <sup>2</sup> (ABOUT)	3.5 m (ABOUT)(1-STOREY)
B1	SHOP AND SERVICES AND SITE OFFICE	61 m <sup>2</sup> (ABOUT)	61 m <sup>2</sup> (ABOUT)	3.5 m (ABOUT)(1-STOREY)
B3	PORTABLE TOILET	15 m <sup>2</sup> (ABOUT)	15 m <sup>2</sup> (ABOUT)	3.5 m (ABOUT)(1-STOREY)
<b>TOTAL</b>		<b>137 m<sup>2</sup> (ABOUT)</b>	<b>137 m<sup>2</sup> (ABOUT)</b>	



INGRESS / EGRESS  
7.3 m (ABOUT)(W)

RESERVED FOR  
ACCESS FOR  
ADJACENT LOT

**PARKING AND LOADING / UNLOADING (L/UL) PROVISIONS**

NO. OF PRIVATE CAR PARKING SPACE	: 49
DIMENSION OF PARKING SPACE	: 5 m (L) x 2.5 m (W)
NO. OF LIGHT GOODS VEHICLE PARKING SPACE	: 11
DIMENSION OF PARKING SPACE	: 7 m (L) x 3.5 m (W)
NO. OF L/UL SPACE FOR LIGHT GOODS VEHICLE	: 2
DIMENSION OF L/UL SPACE	: 7 m (L) X 3.5 m (W)

**LEGEND**

- APPLICATION SITE
- STRUCTURE
- PARKING SPACE (PRIVATE CAR)
- PARKING SPACE (LIGHT GOODS VEHICLE)
- L/UL SPACE (LIGHT GOODS VEHICLE)
- INGRESS / EGRESS

PLANNING CONSULTANT



PROJECT

PROPOSED TEMPORARY PUBLIC VEHICLE PARK (EXCLUDING CONTAINER VEHICLE) AND SHOP AND SERVICES WITH ANCILLARY FACILITIES FOR A PERIOD OF 5 YEARS AND ASSOCIATED FILLING OF LAND

SITE LOCATION

VARIOUS LOTS IN D.D. 129, LAU FAU SHAN, YUEN LONG, NEW TERRITORIES

SCALE

1 : 700 @ A4

DRAWN BY: MN DATE: 9.8.2024

CHECKED BY: DATE:

APPROVED BY: DATE:

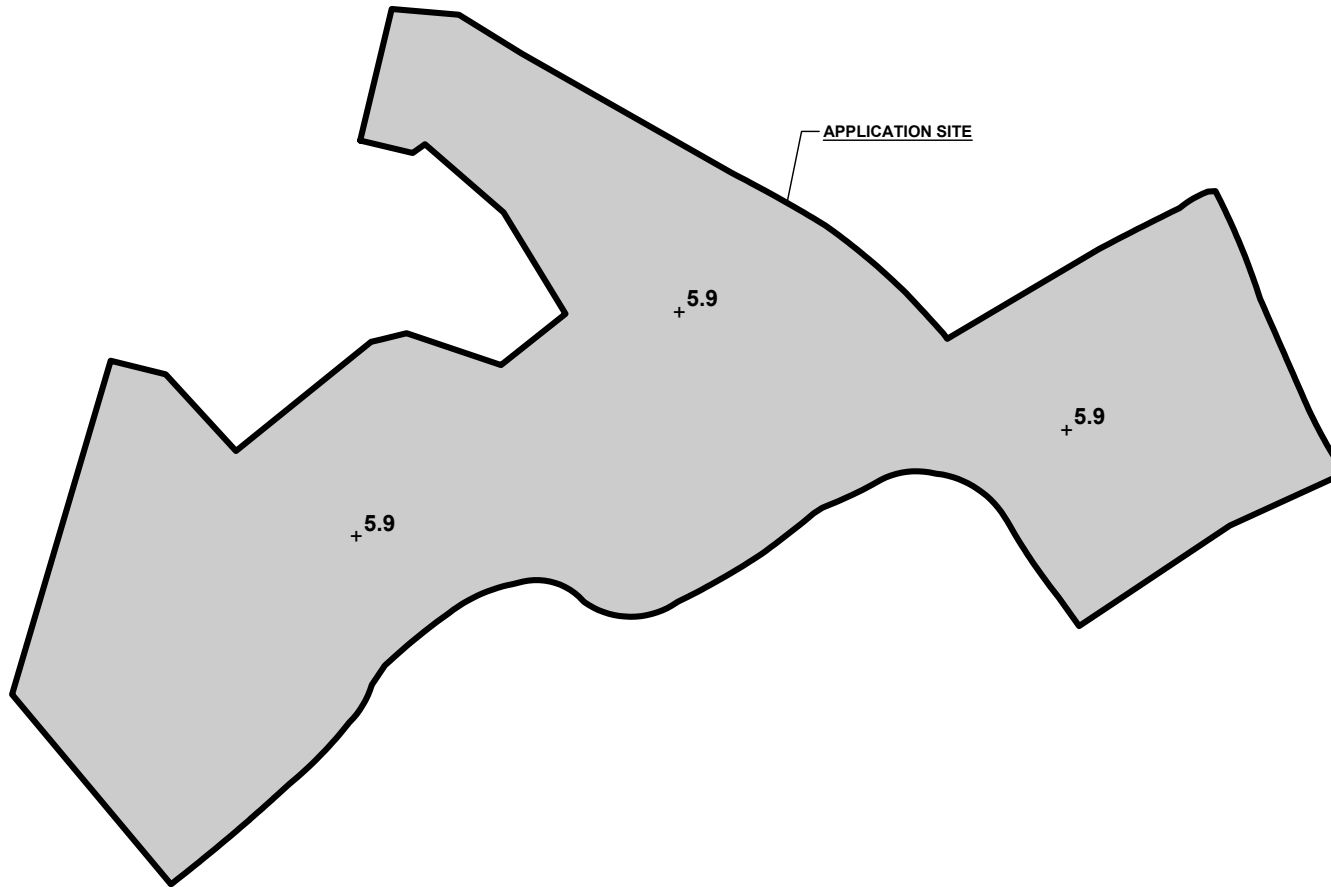
DWG. TITLE  
LAYOUT PLAN

DWG NO. VER.  
PLAN 4 001

**FILLING OF LAND AT THE APPLICATION SITE**


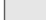
APPLICATION SITE AREA : 3,868 m<sup>2</sup> (ABOUT)  
 EXISTING SITE SURFACE : HARD-PAVED  
 EXISTING SITE LEVEL : +5.9 mPD (ABOUT)  
 DEPTH OF LAND FILLING : NOT MORE THAN 0.1 m

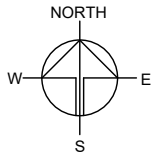
THE APPLICATION SITE HAS BEEN HARD-PAVED WITH ASPHALT. NO FURTHER FILLING OF LAND WILL BE CARRIED OUT AT THE SITE DURING THE PLANNING APPROVAL PERIOD.



SITE BOUNDARY FOR IDENTIFICATION PURPOSE.

**LEGEND**

-  APPLICATION SITE
- +14.7** EXISTING SITE LEVELS
-  EXISTING HARD-PAVED AREA



PLANNING CONSULTANT



PROJECT

PROPOSED TEMPORARY PUBLIC VEHICLE PARK (EXCLUDING CONTAINER VEHICLE) AND SHOP AND SERVICES WITH ANCILLARY FACILITIES FOR A PERIOD OF 5 YEARS AND ASSOCIATED FILLING OF LAND

SITE LOCATION

VARIOUS LOTS IN D.D. 129, LAU FAU SHAN, YUEN LONG, NEW TERRITORIES

SCALE

1 : 700 @ A4

DRAWN BY	DATE
MN	9.8.2024
REVISED BY	DATE
APPROVED BY	DATE

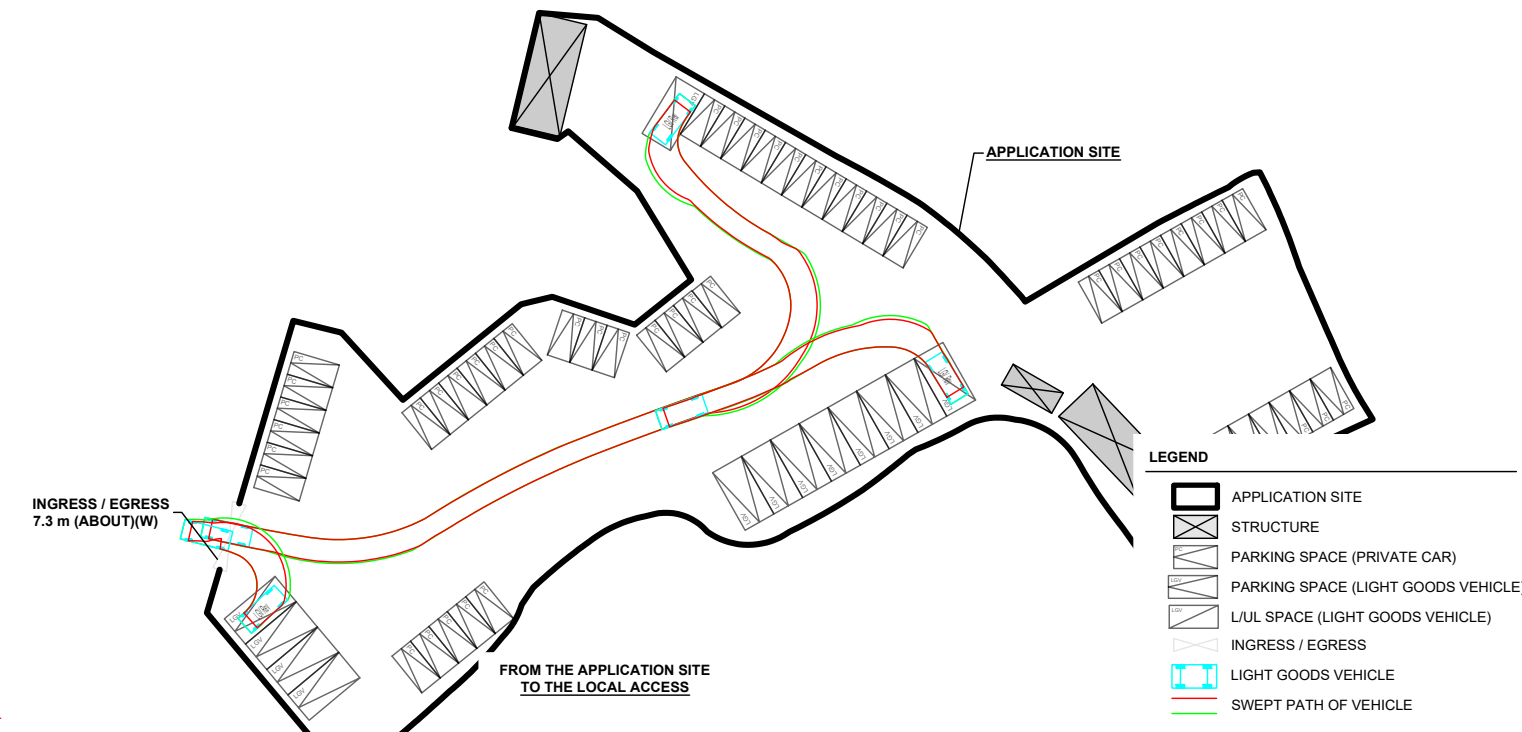
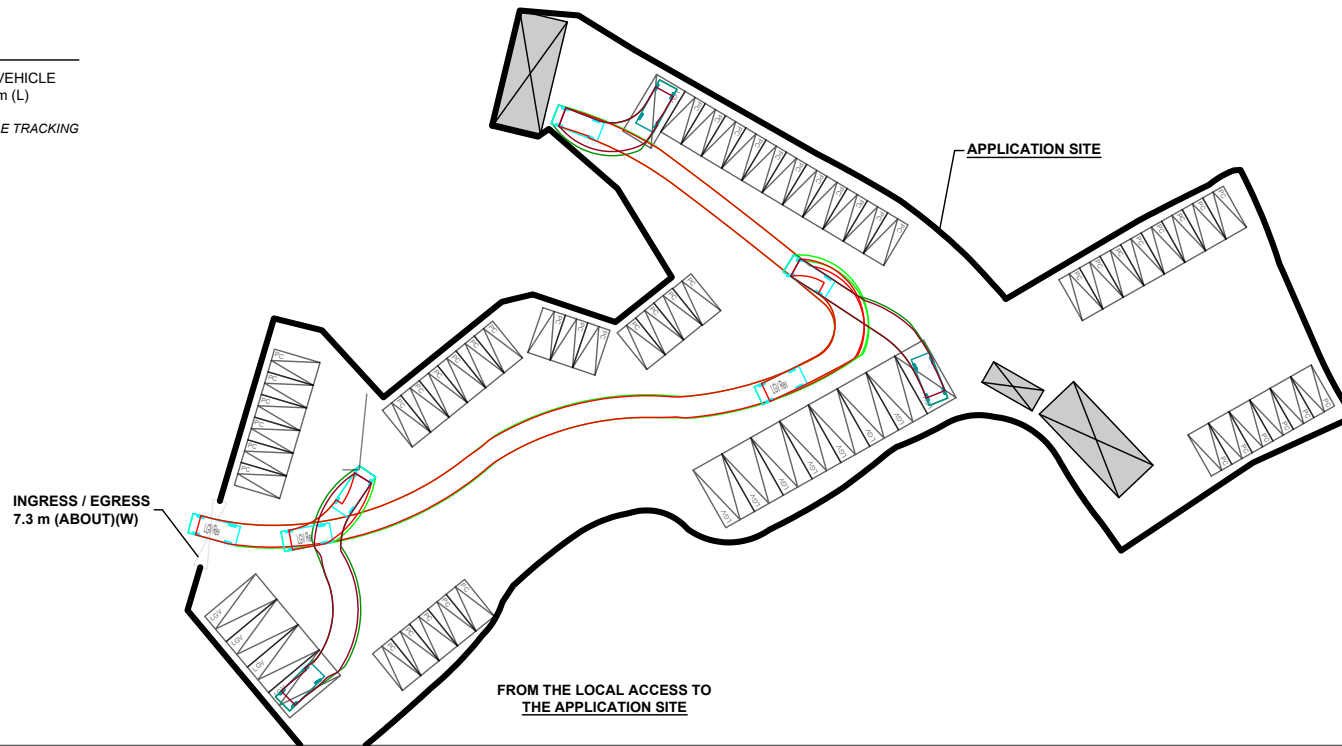
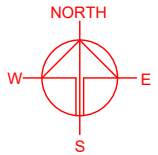
DWG. TITLE  
 FILLING OF LAND AREA

DWG NO.	VER.
PLAN 5	001

**SWEPT PATH ANALYSIS**

TYPE OF VEHICLE : LIGHT GOODS VEHICLE  
 DIMENSION OF VEHICLE : 2.1 m (W) X 5.2 m (L)

SWEPT PATHS GENERATED BY AUTODESK VEHICLE TRACKING



- LEGEND**
- APPLICATION SITE
  - STRUCTURE
  - PARKING SPACE (PRIVATE CAR)
  - PARKING SPACE (LIGHT GOODS VEHICLE)
  - L/LUL SPACE (LIGHT GOODS VEHICLE)
  - INGRESS / EGRESS
  - LIGHT GOODS VEHICLE
  - SWEPT PATH OF VEHICLE

SITE BOUNDARY FOR IDENTIFICATION PURPOSE.

PLANNING CONSULTANT



PROJECT

PROPOSED TEMPORARY PUBLIC VEHICLE PARK (EXCLUDING CONTAINER VEHICLE) AND SHOP AND SERVICES WITH ANCILLARY FACILITIES FOR A PERIOD OF 5 YEARS AND ASSOCIATED FILLING OF LAND

SITE LOCATION

VARIOUS LOTS IN D.D. 129, LAU FAU SHAN, YUEN LONG, NEW TERRITORIES

SCALE

1 : 800 @ A4

DRAWN BY MN	DATE 9.8.2024
CHECKED BY	DATE
APPROVED BY	DATE

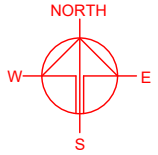
DWG. TITLE  
SWEPT PATH ANALYSIS (LGV)

DWG NO. PLAN 6	VER. 001
-------------------	-------------

**SWEPT PATH ANALYSIS**

TYPE OF VEHICLE : PRIVATE CAR  
 DIMENSION OF VEHICLE : 1.7 m (W) X 4.6 m (L)

SWEPT PATHS GENERATED BY AUTODESK VEHICLE TRACKING



INGRESS / EGRESS  
7.3 m (ABOUT)(W)

APPLICATION SITE

FROM THE LOCAL ACCESS TO  
THE APPLICATION SITE

INGRESS / EGRESS  
7.3 m (ABOUT)(W)

APPLICATION SITE

FROM THE APPLICATION SITE  
TO THE LOCAL ACCESS

**LEGEND**

- APPLICATION SITE
- STRUCTURE
- PARKING SPACE (PRIVATE CAR)
- PARKING SPACE (LIGHT GOODS VEHICLE)
- L/UL SPACE (LIGHT GOODS VEHICLE)
- INGRESS / EGRESS
- PRIVATE CAR
- SWEPT PATH OF VEHICLE

SITE BOUNDARY FOR IDENTIFICATION PURPOSE.

PLANNING CONSULTANT



PROJECT

PROPOSED TEMPORARY PUBLIC VEHICLE PARK (EXCLUDING CONTAINER VEHICLE) AND SHOP AND SERVICES WITH ANCILLARY FACILITIES FOR A PERIOD OF 5 YEARS AND ASSOCIATED FILLING OF LAND

SITE LOCATION

VARIOUS LOTS IN D.D. 129, LAU FAU SHAN, YUEN LONG, NEW TERRITORIES

SCALE

1 : 800 @ A4

DRAWN BY

MN

DATE

9.8.2024

CHECKED BY

DATE

APPROVED BY

DATE

DWG. TITLE

SWEPT PATH ANALYSIS (PC)

DWG NO.

PLAN 7

VER.

001