

1111 P 126
4

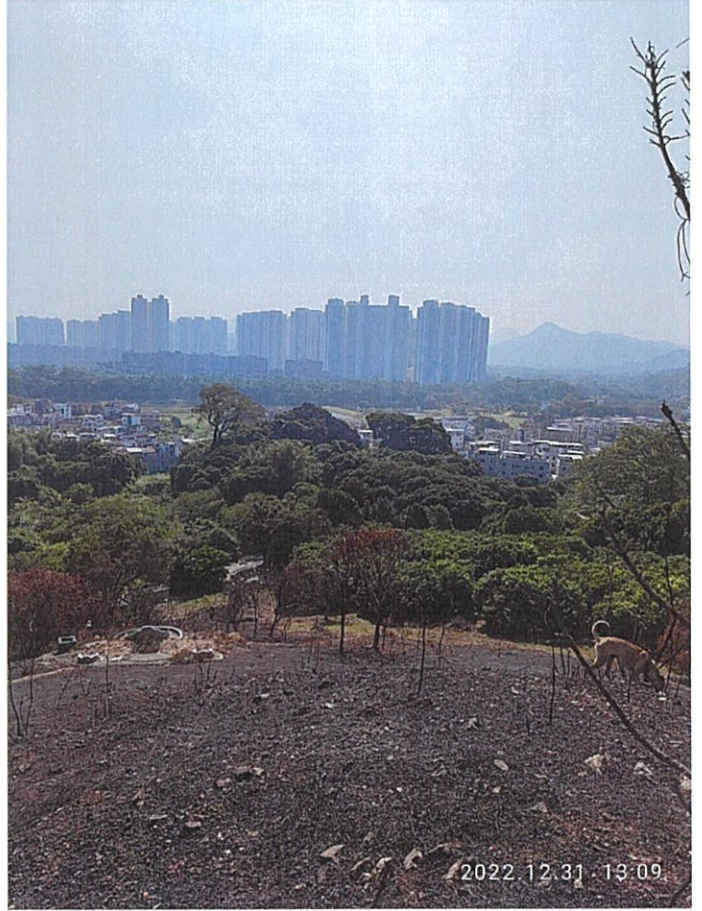


1

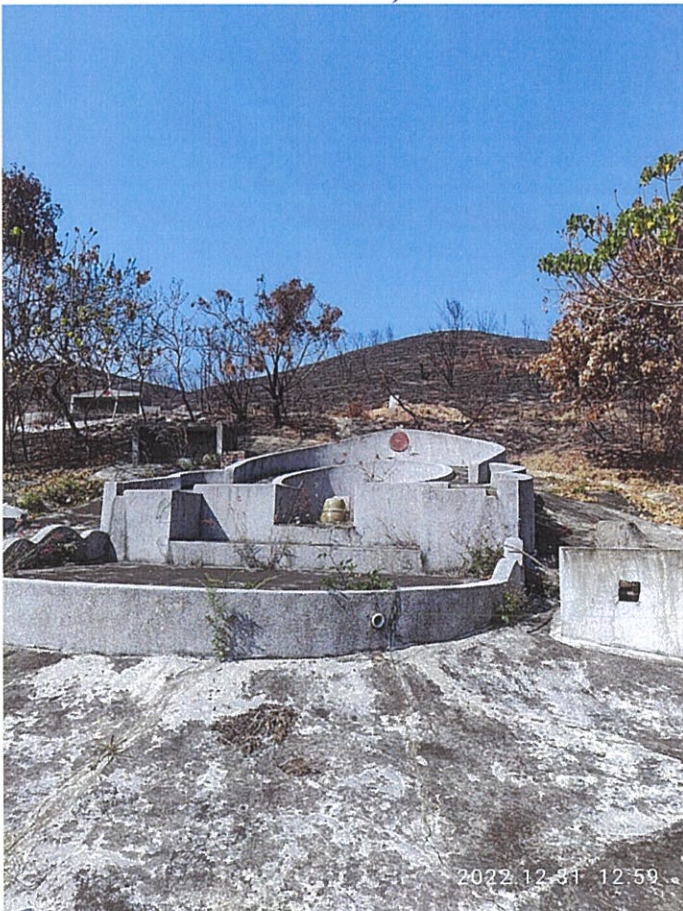


2

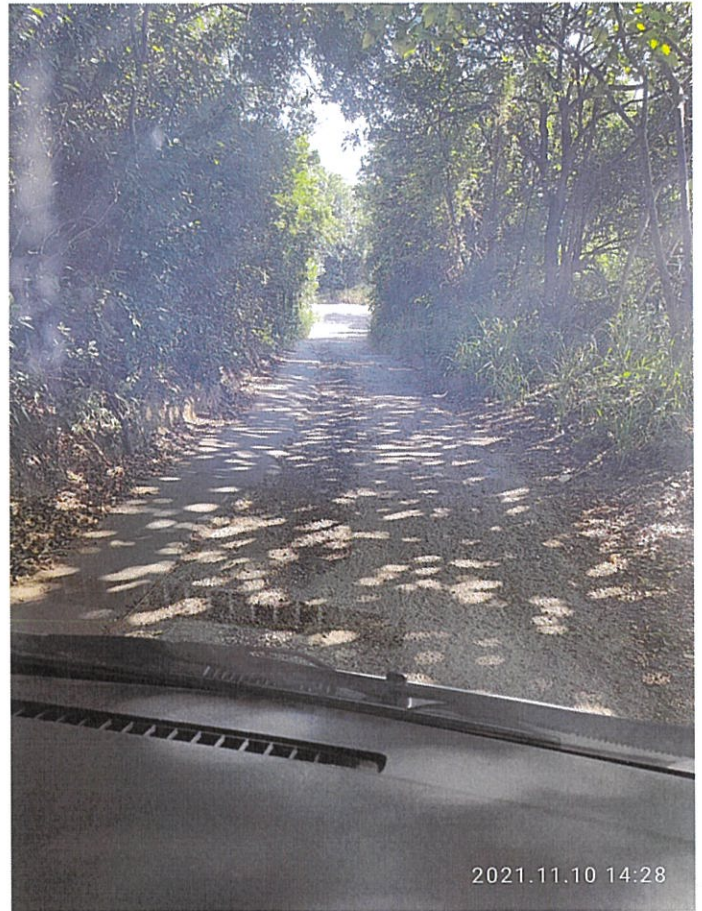
5



3



4



5



6

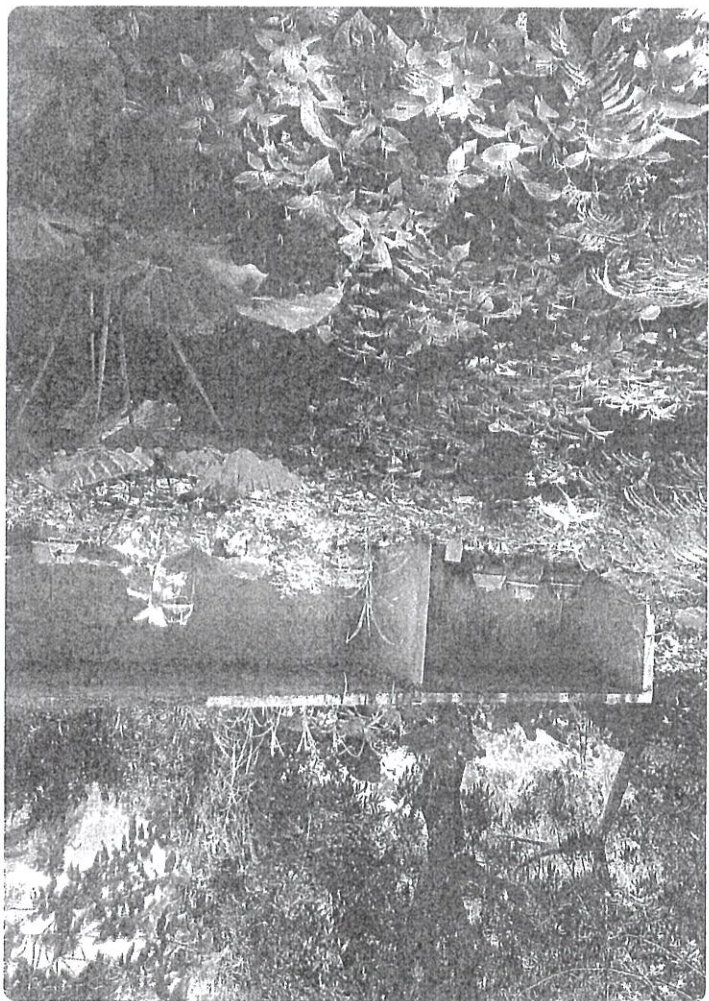
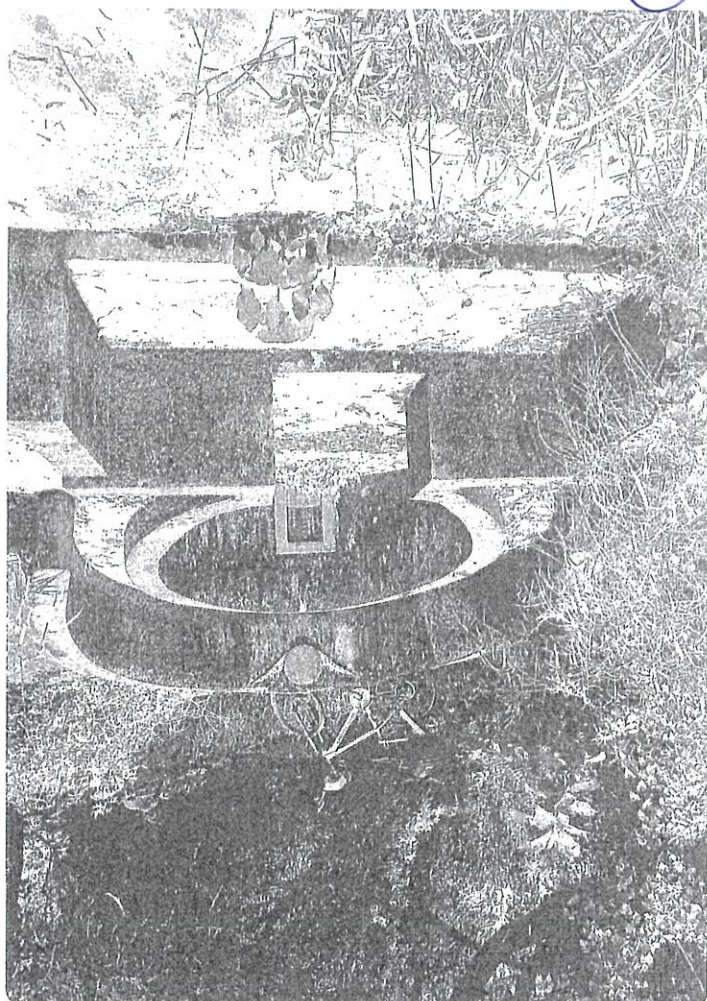
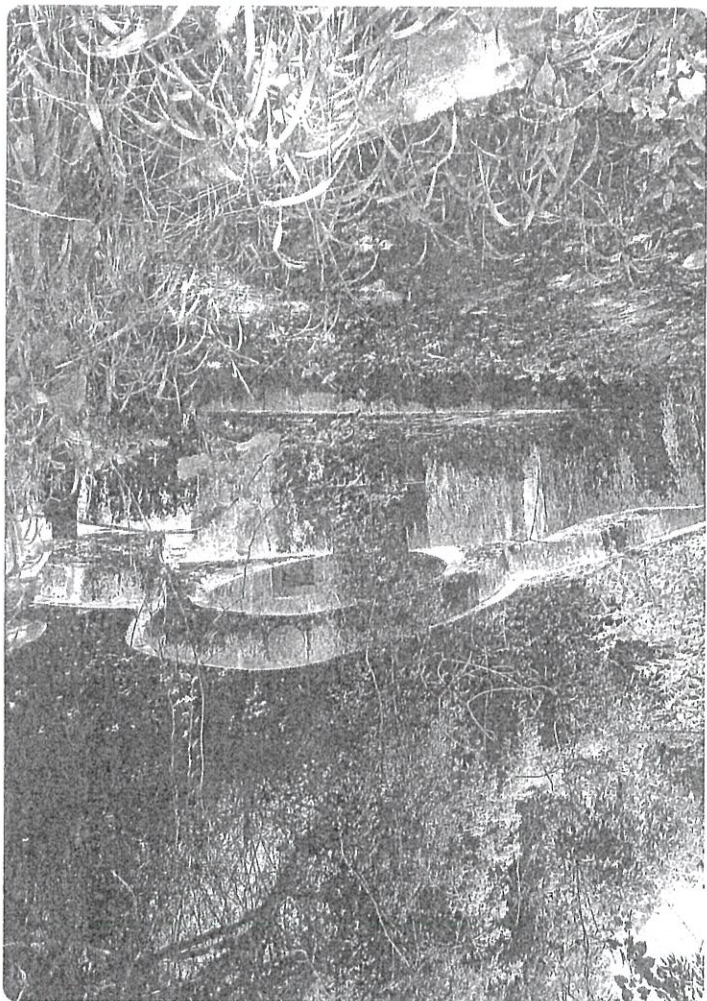
5



5

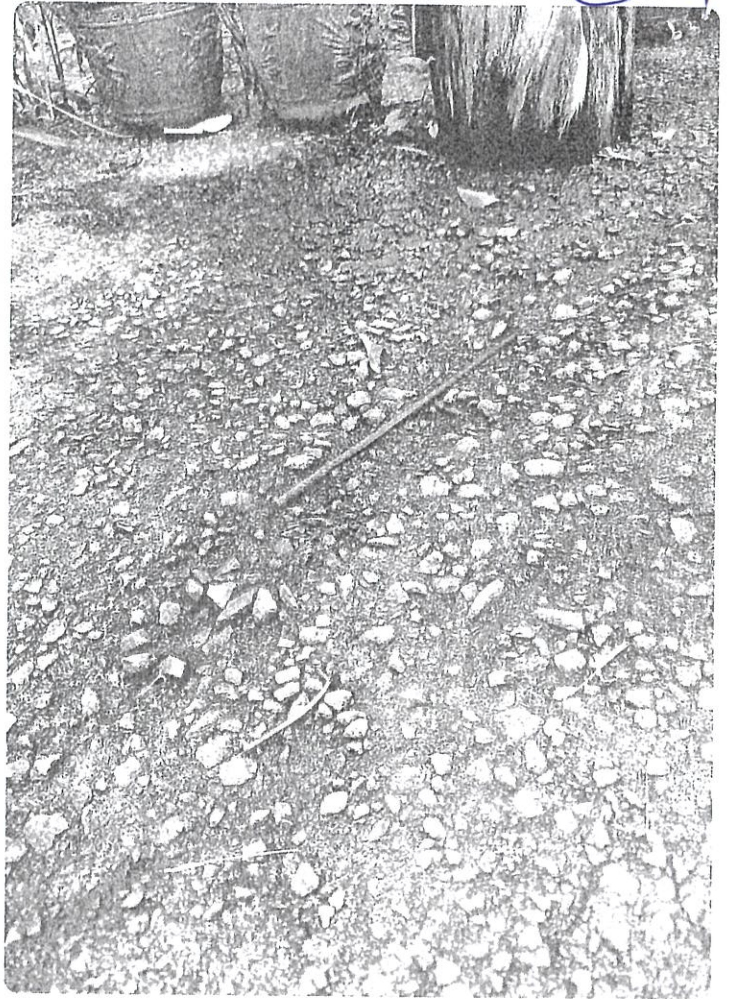
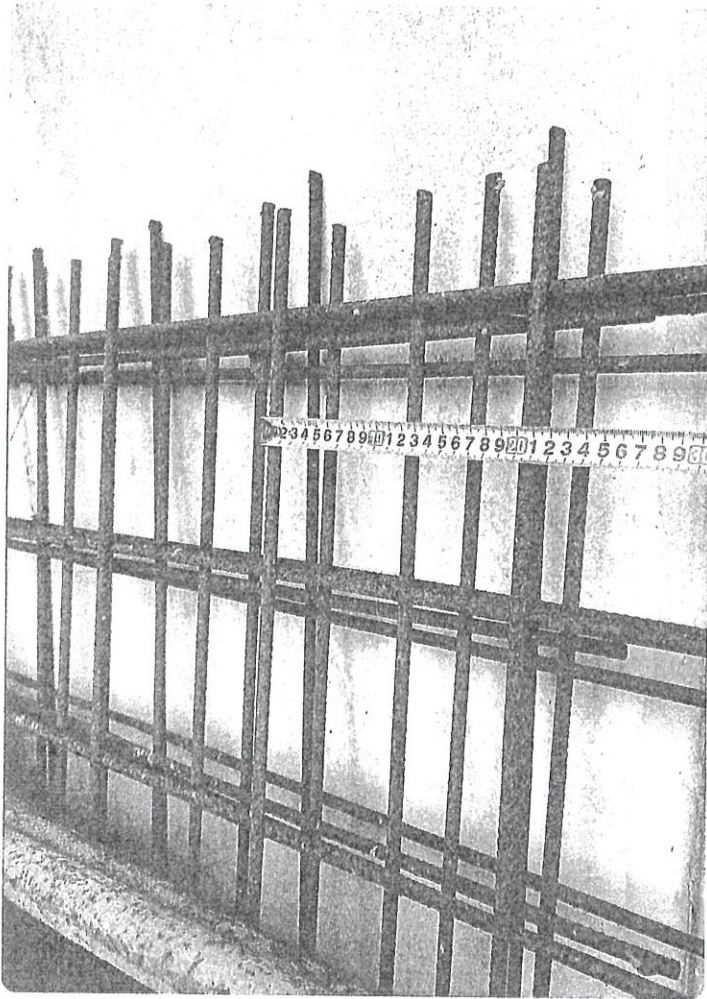


5 2

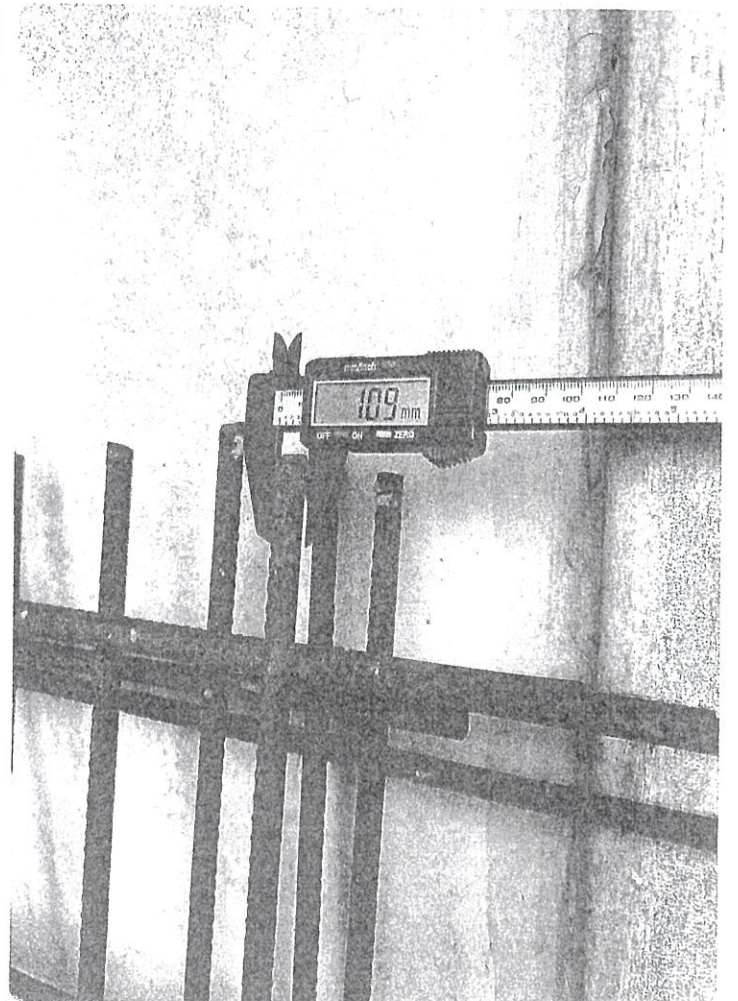


5

⑤ 4



⑥





(擷取自影片DJI_0012.MP4 - 09分11秒的畫面)

2023年1月30日的現場環境及情況 - 平台被水泥硬鋪面覆蓋，及停泊了另一台運輸車。斜坡表面大致被植被覆蓋。

截圖3