

Proposed Field Study Centre & Organic Farm by
Revitalization of Former Chuk Hing Public School at
GL in D.O. 104, Ha Chuk Yuen Tsuen, San Tin



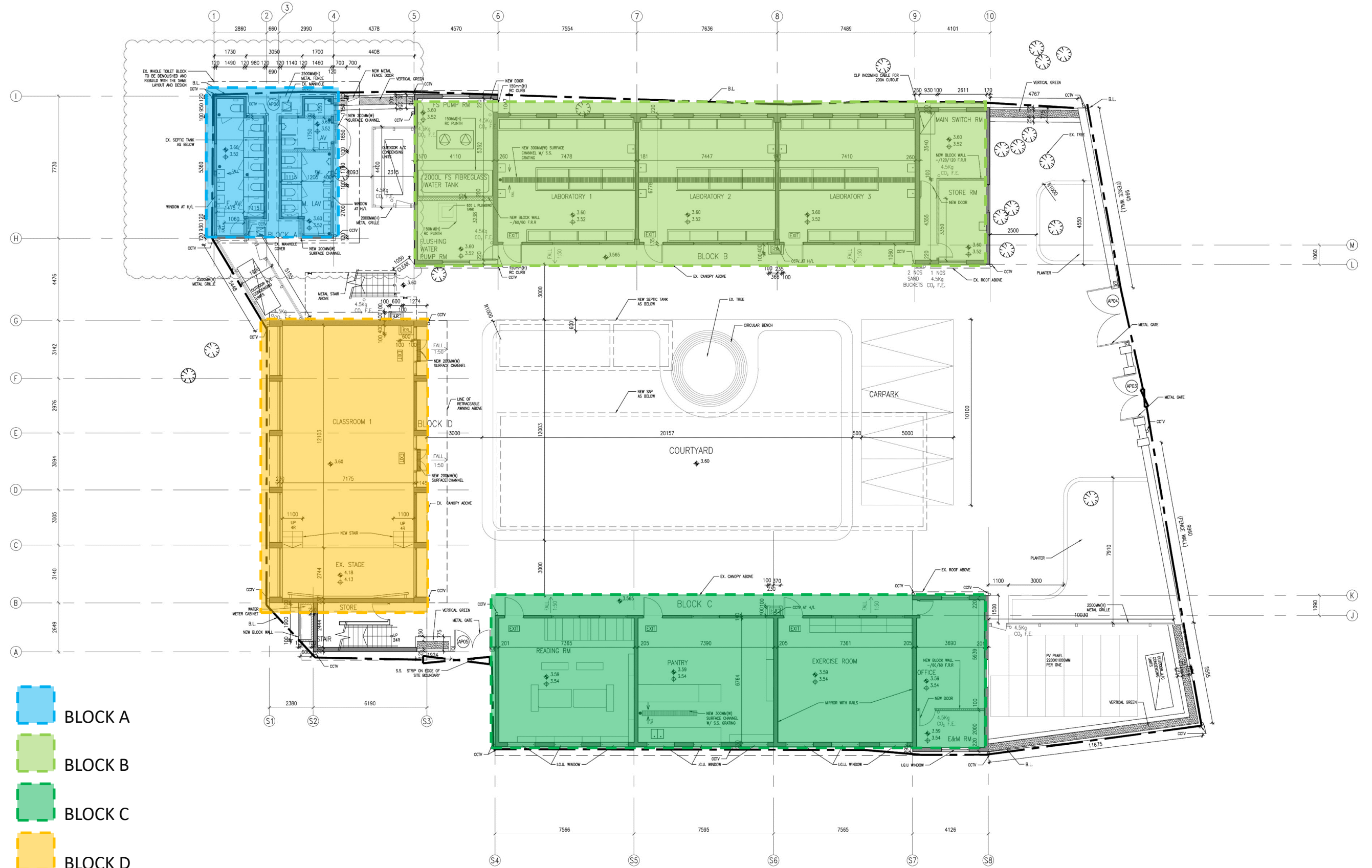
SITE LOCATION



Proposed Field Study Centre & Organic Farm by Revitalization of Former Chuk Hing Public School at GL in D.O. 104, Ha Chuk Yuen Tsuen, San Tin

MASTER LAYOUT PLAN

LEGEND



- BLOCK A
- BLOCK B
- BLOCK C
- BLOCK D

SITE PHOTO



Proposed Field Study Centre & Organic Farm by Revitalization of Former Chuk Hing Public School at GL in D.O. 104, Ha Chuk Yuen Tsuen, San Tin

P:\H20002-Organic Farm\05_Presentation

26/8/2024

A.LEAD architects Ltd.
領建建築師事務所有限公司
ARCHITECTURE • INTERIOR • LANDSCAPE

SITE PHOTO



Proposed Field Study Centre & Organic Farm by Revitalization of Former Chuk Hing Public School at GL in D.O. 104, Ha Chuk Yuen Tsuen, San Tin

BLOCK A SITE PHOTO



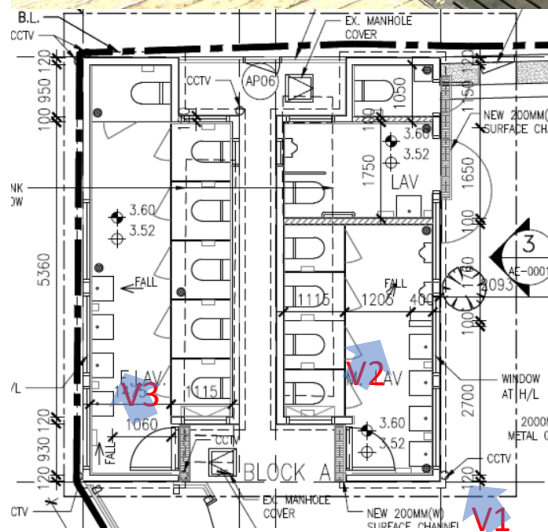
V1
LAVATORY ENTRANCE



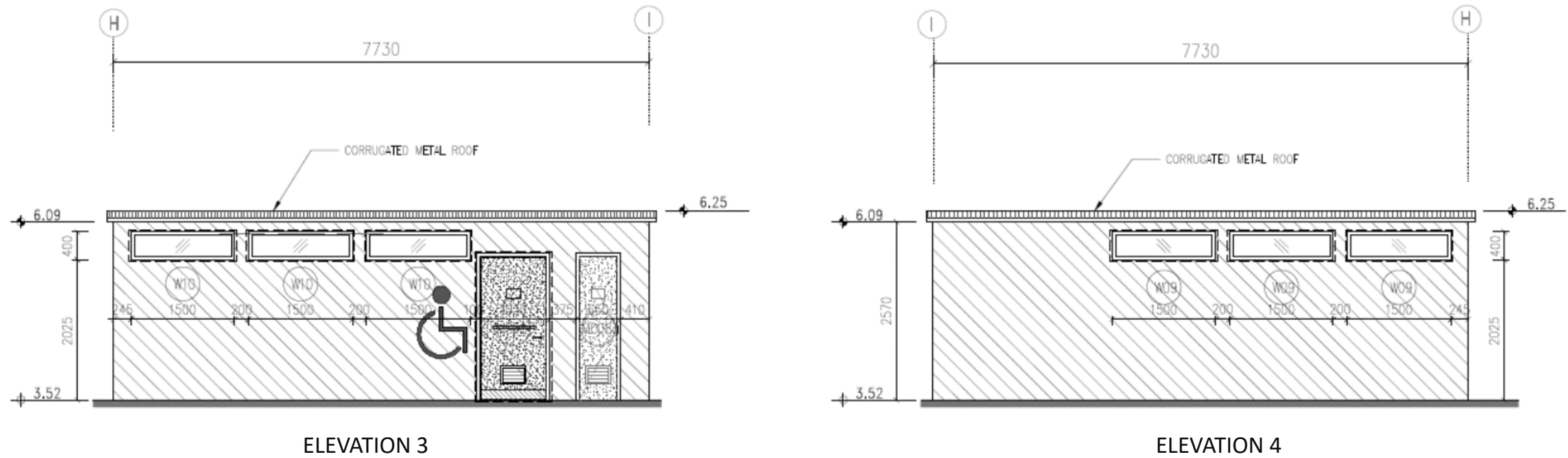
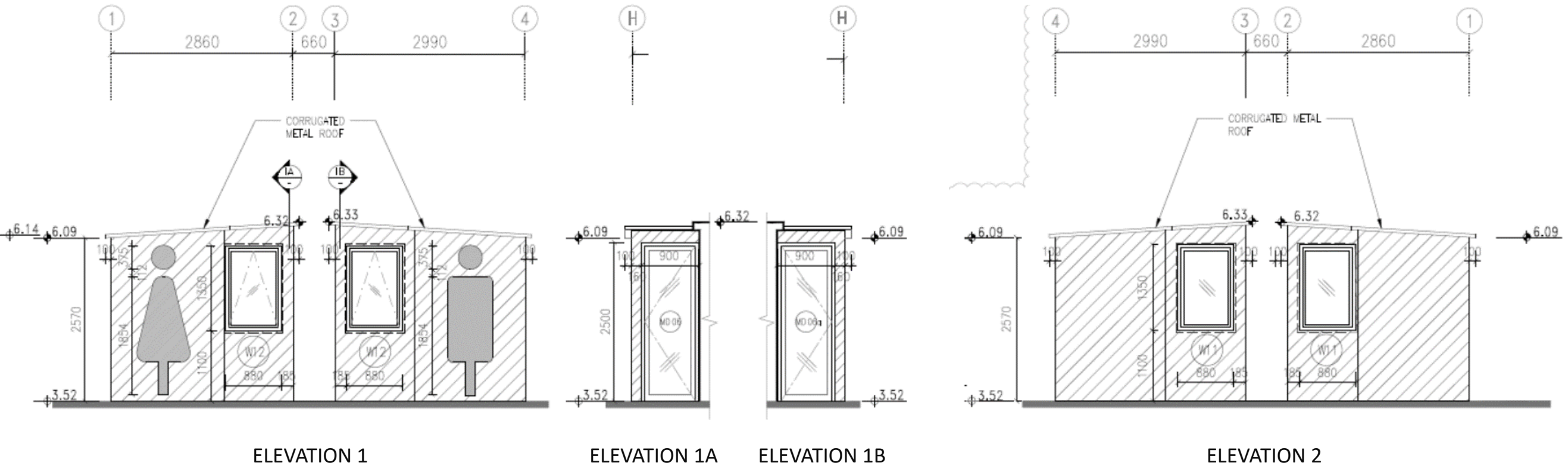
V2
MALE LAVATORY



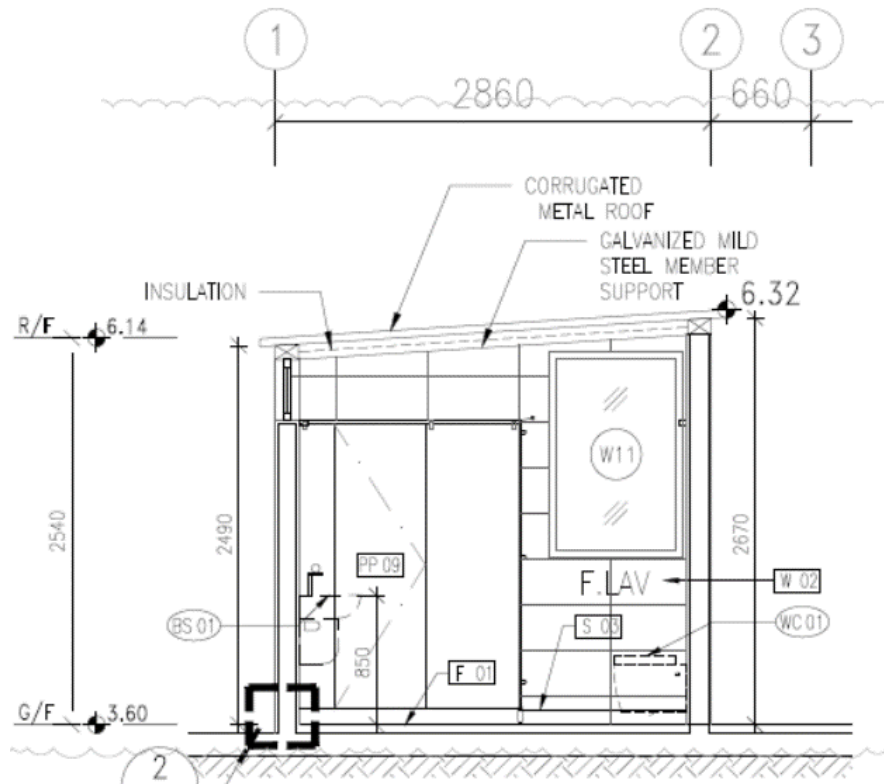
V3
FEMALE LAVATORY



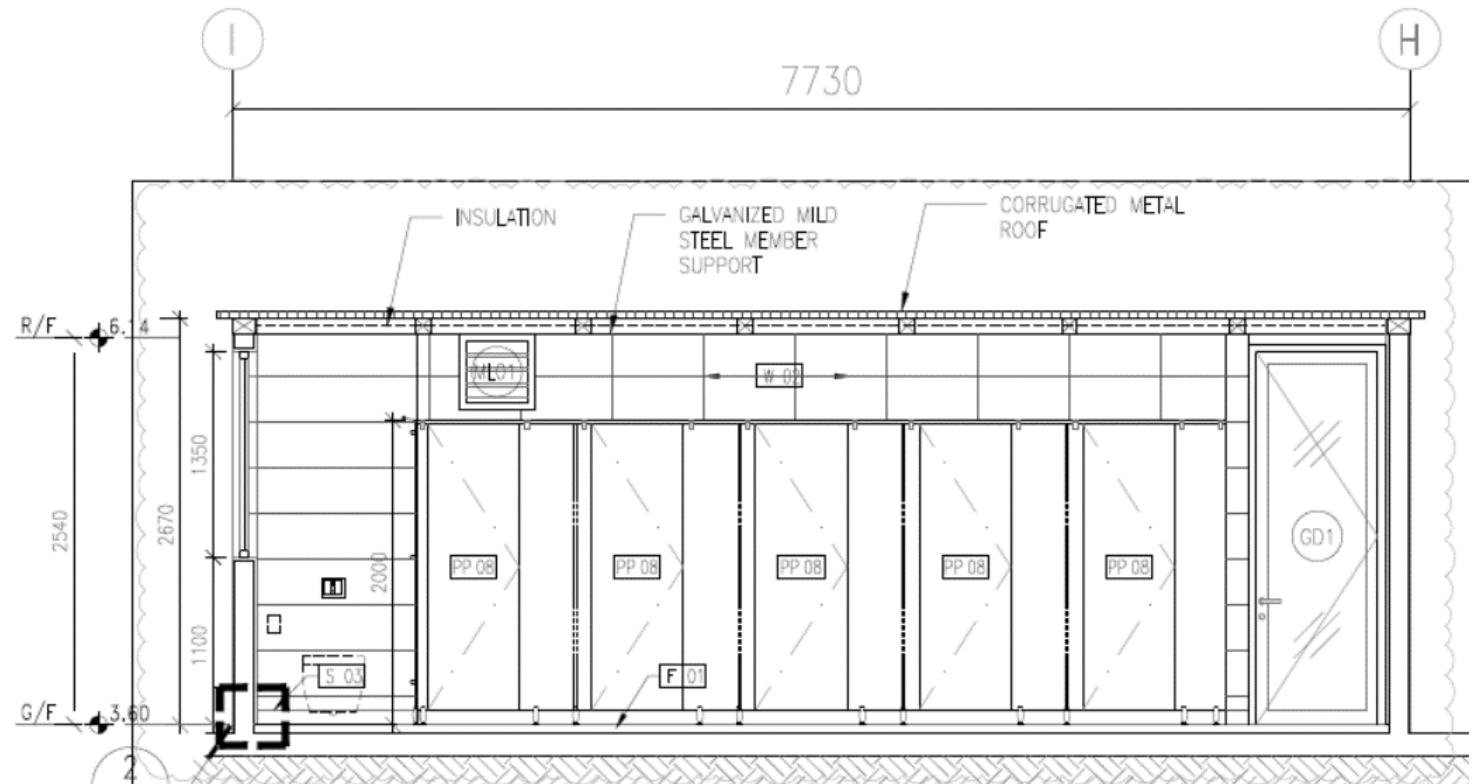
BLOCK A ELEVATIONS



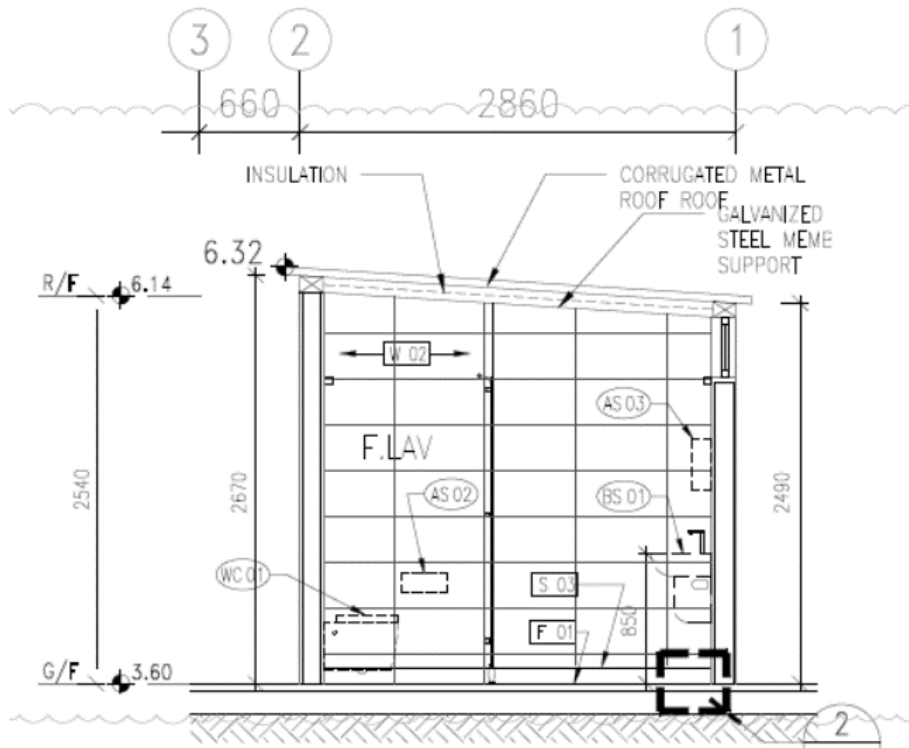
BLOCK A SECTIONS



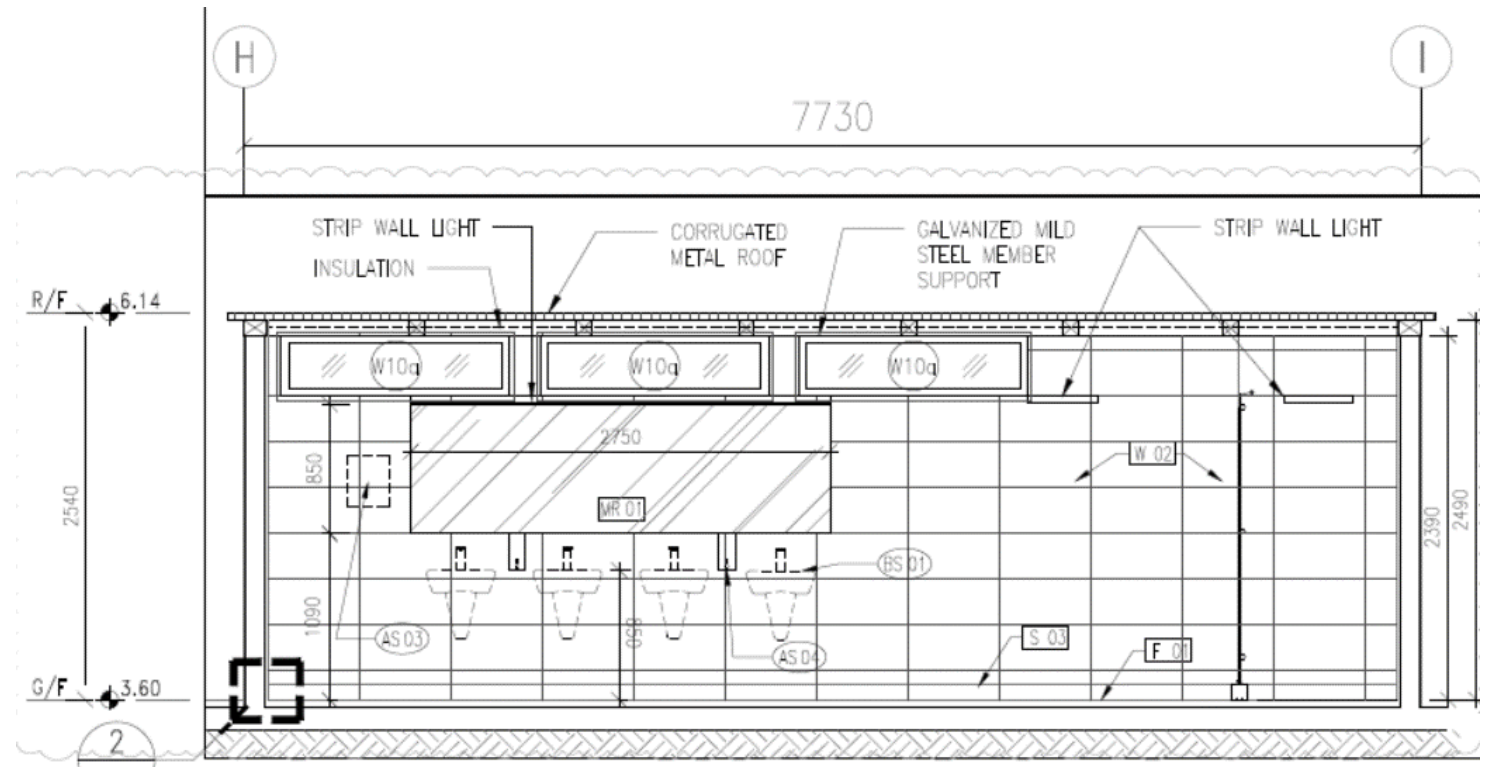
SECTION 1



SECTION 2

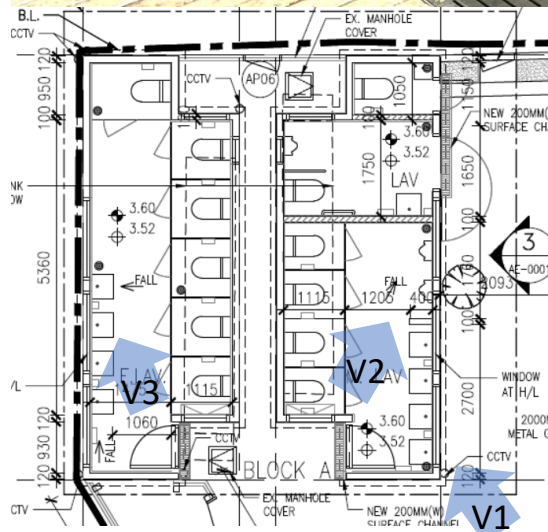


SECTION 3



SECTION 4

BLOCK A SITE PHOTO

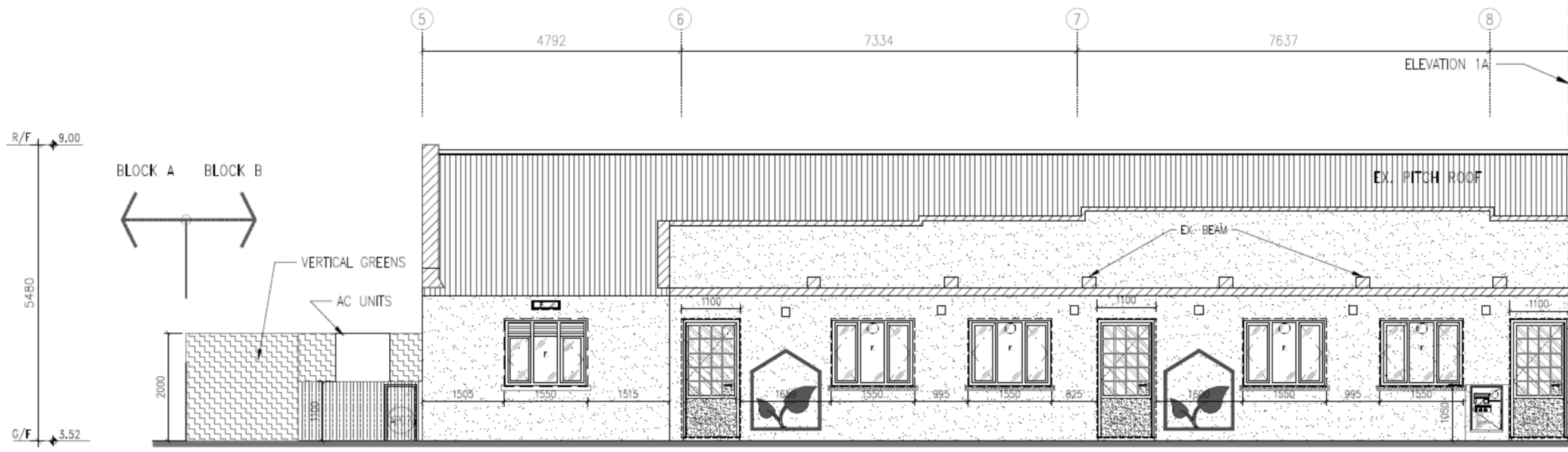


V1
LAVATORY ENTRANCE

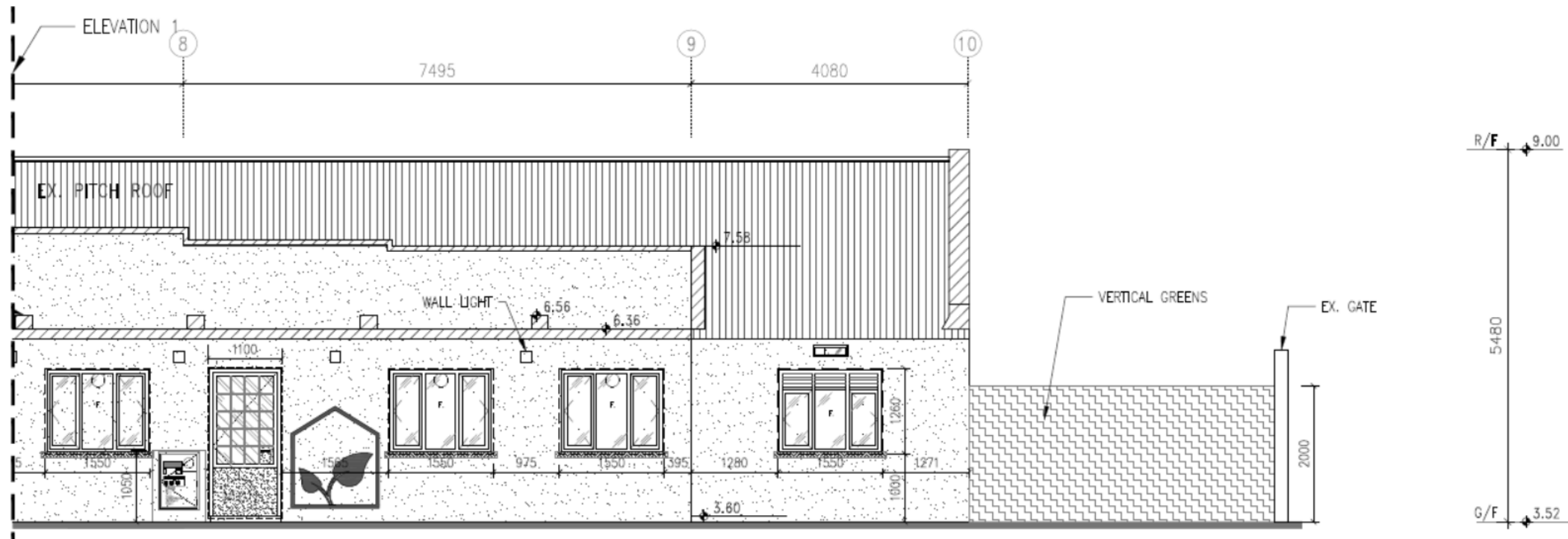
V2
MALE LAVATORY

V3
FEMALE LAVATORY

BLOCK B ELEVATIONS

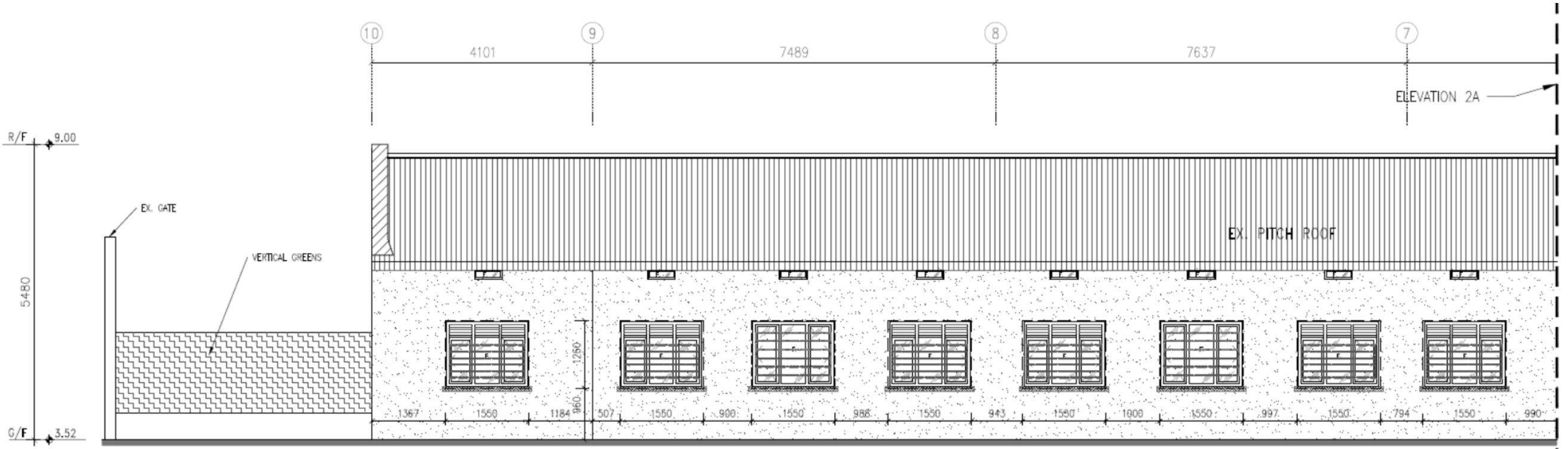


ELEVATION 1

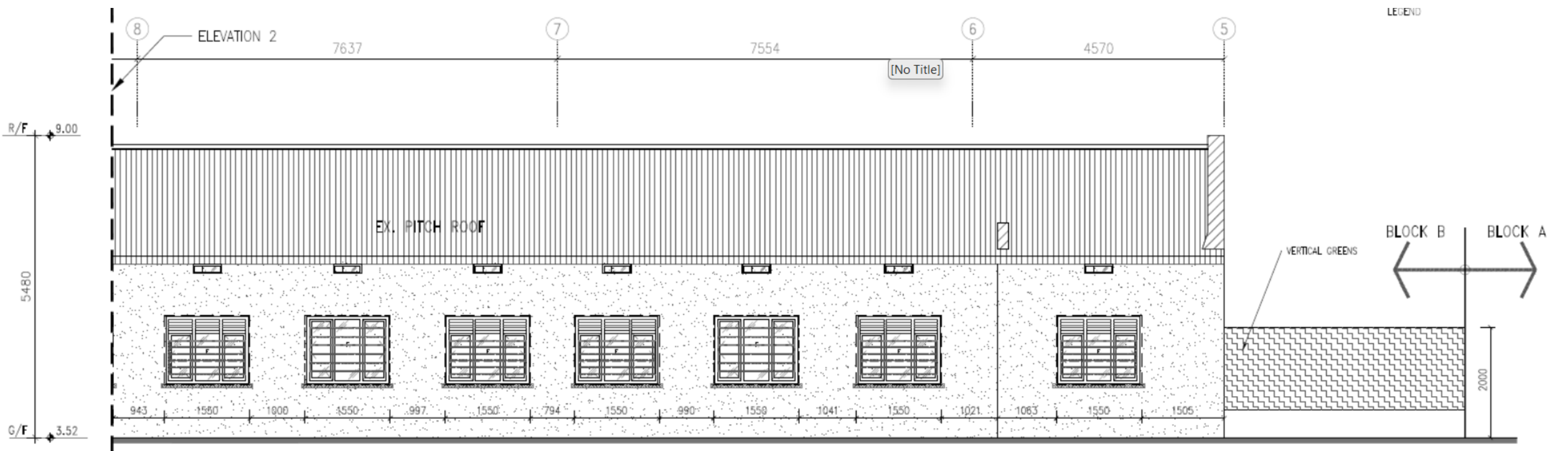


ELEVATION 1A

BLOCK B ELEVATIONS



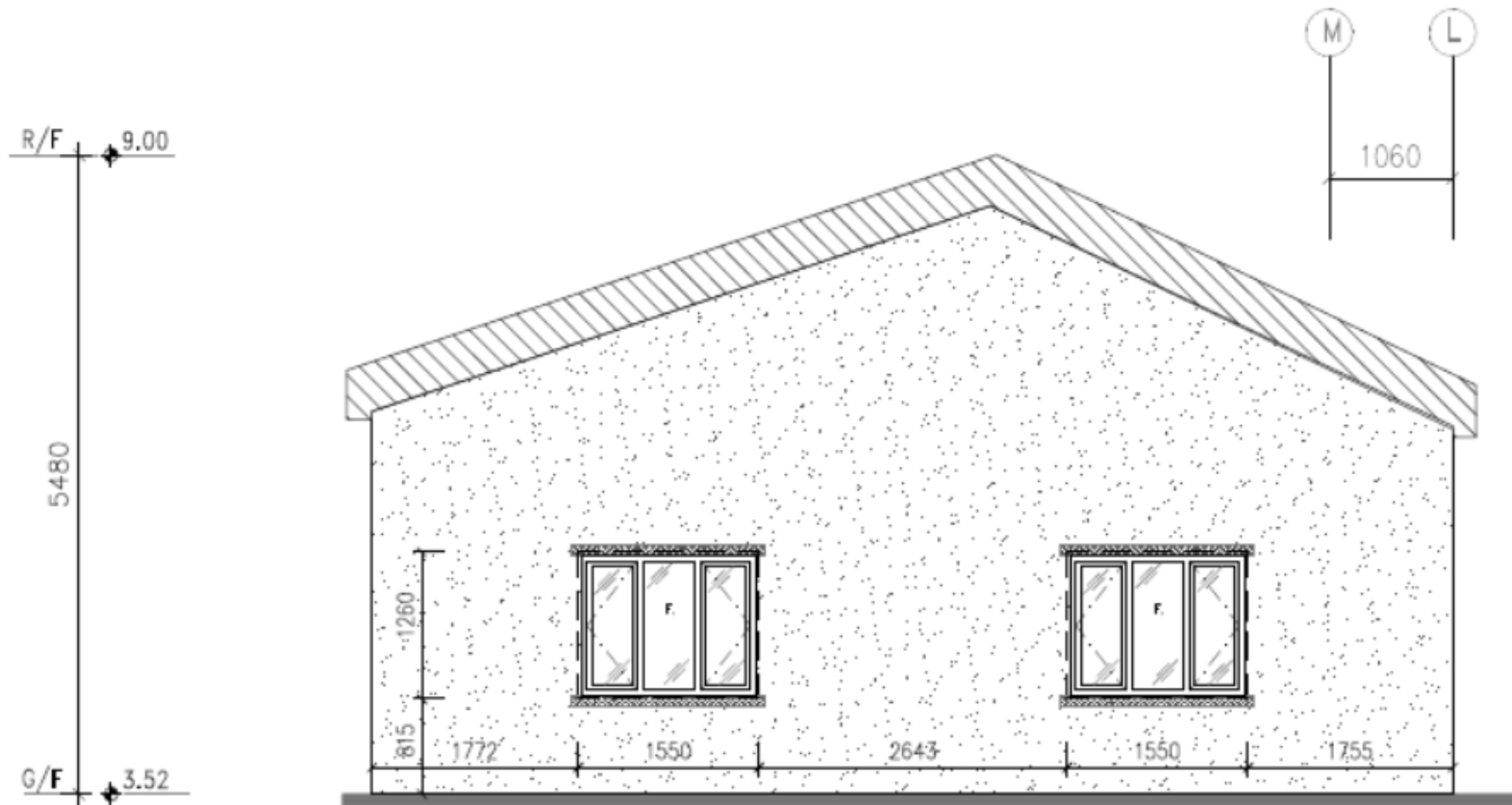
ELEVATION 2



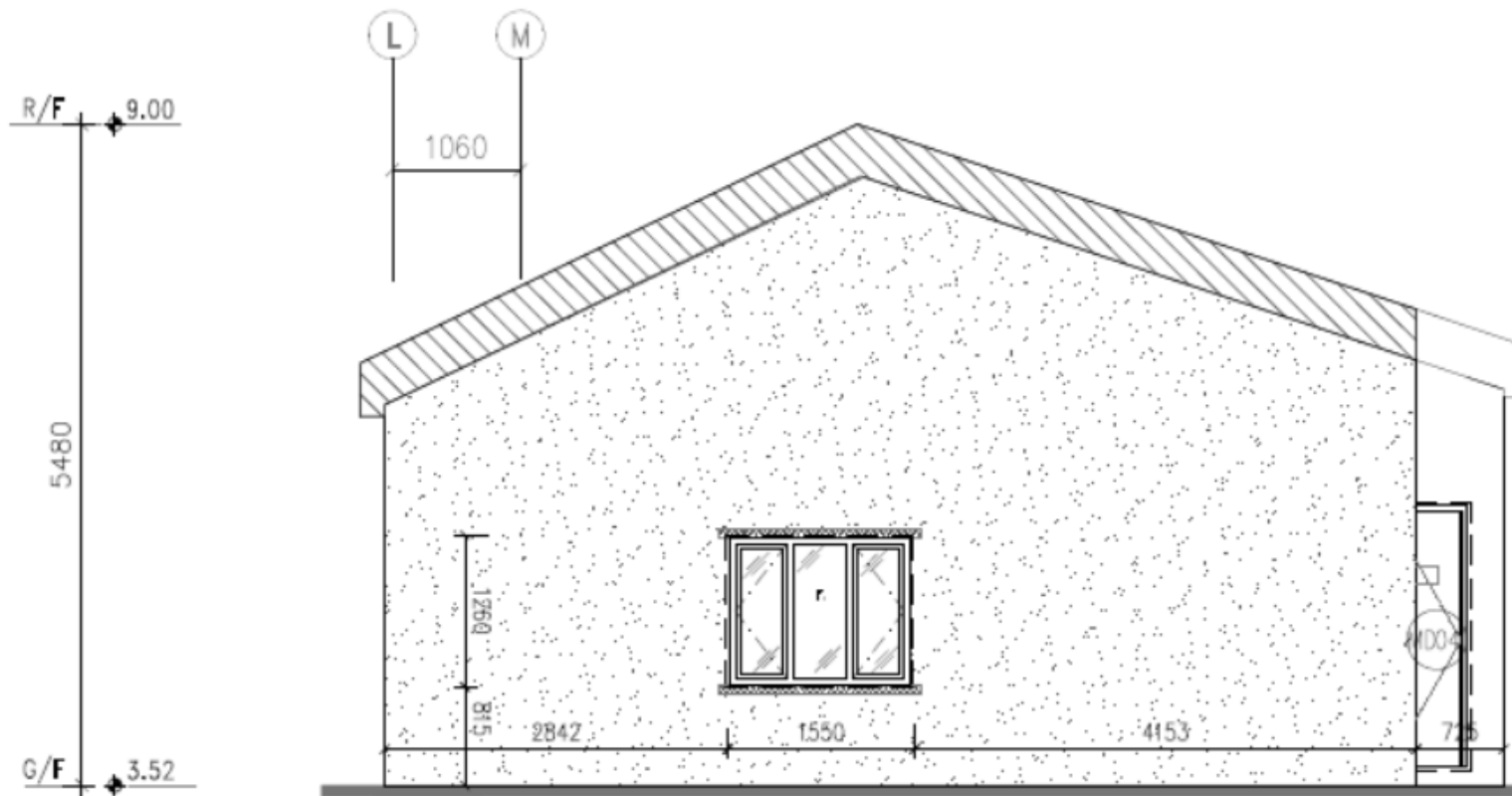
ELEVATION 2A

BLOCK B ELEVATIONS

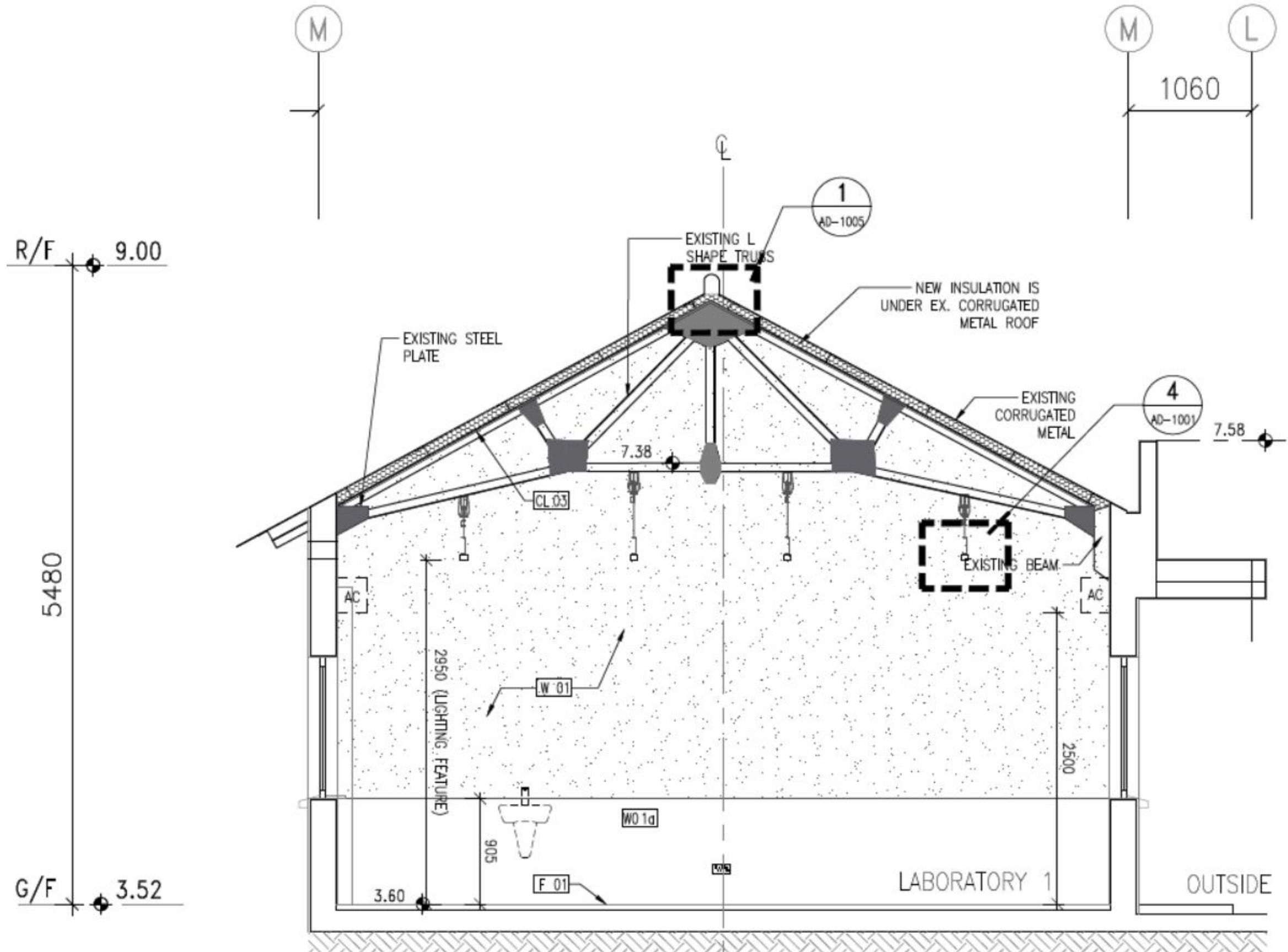
ELEVATION 3



ELEVATION 4

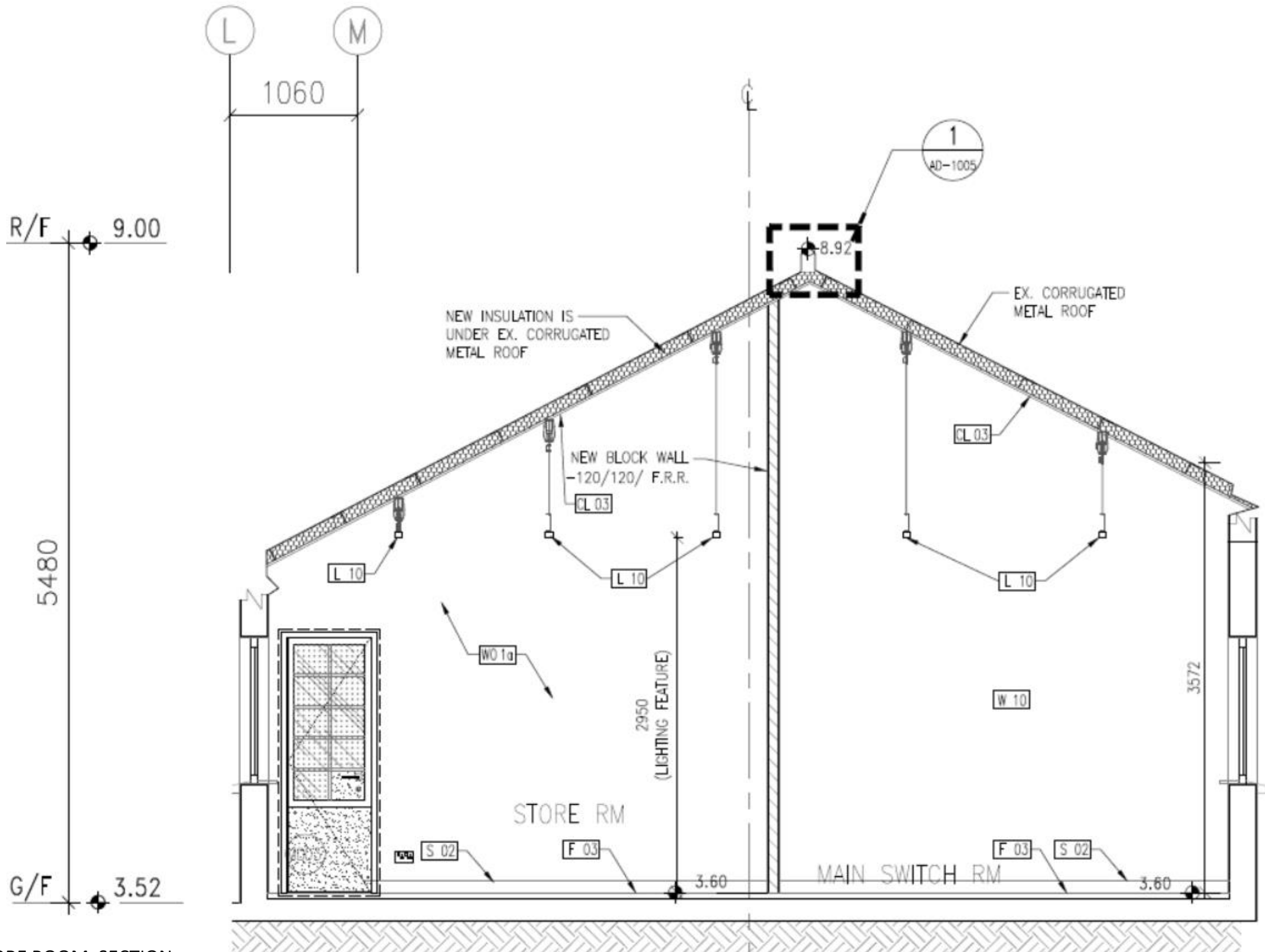


BLOCK B SECTIONS



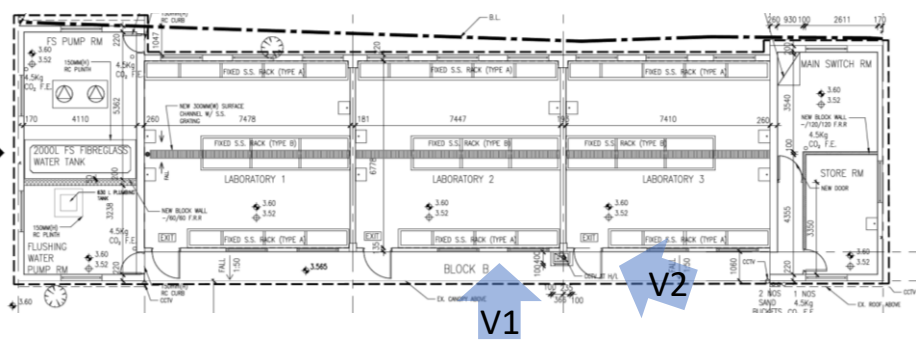
LABORATORY SECTION

BLOCK B SECTIONS



STORE ROOM SECTION

BLOCK B SITE PHOTO

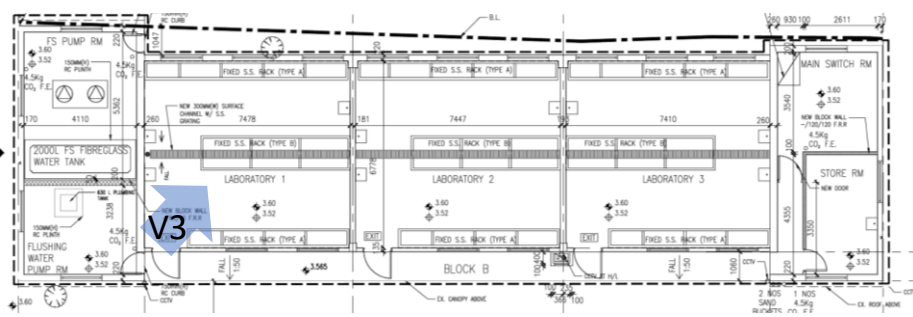


V1
BLOCK B EXTERIOR



V2
BLOCK B EXTERIOR

BLOCK B SITE PHOTO



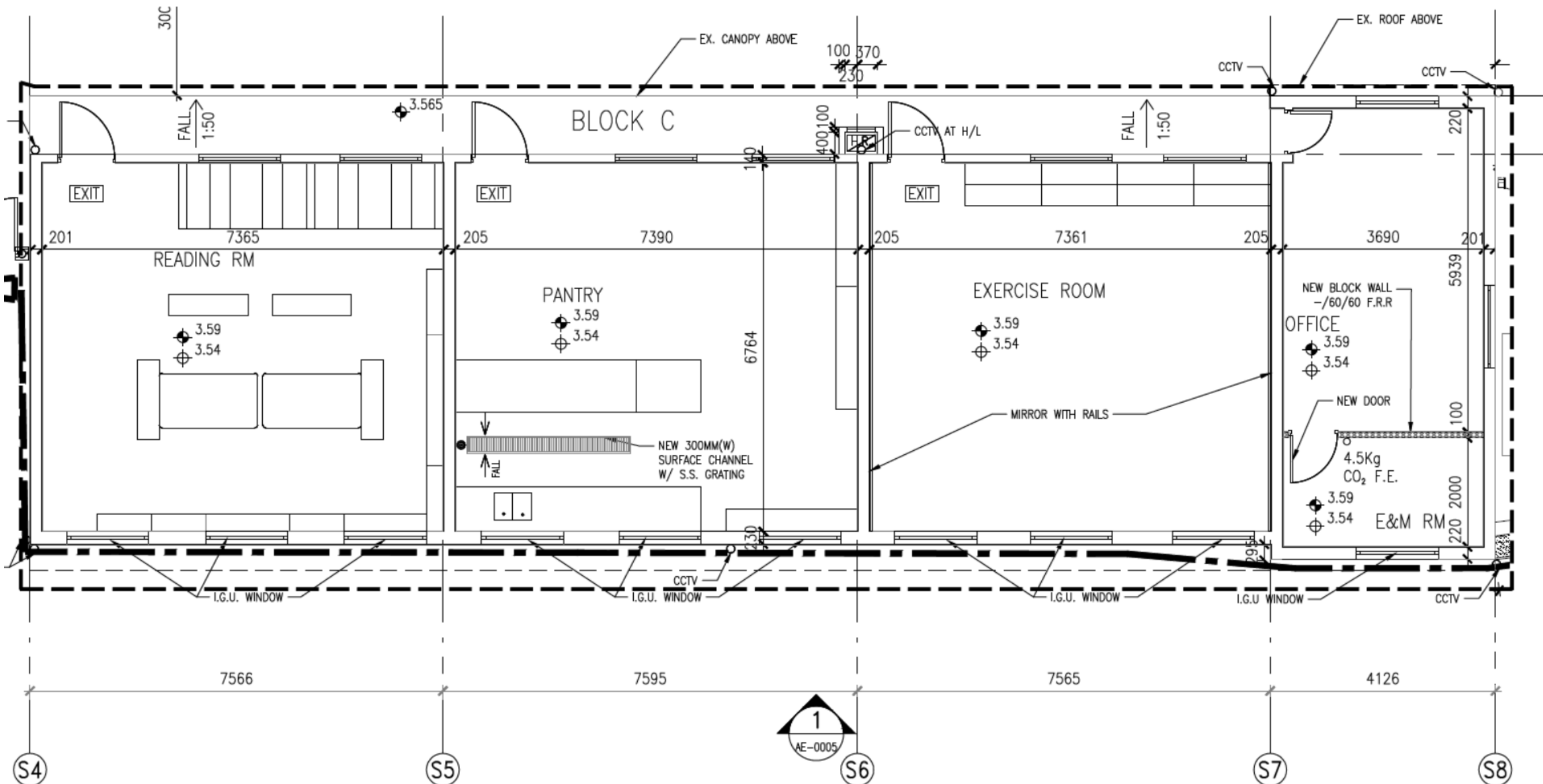
V3 LABORATORY

Proposed Field Study Centre & Organic Farm by Revitalization of Former Chuk Hing Public School at GL in D.O. 104, Ha Chuk Yuen Tsuen, San Tin

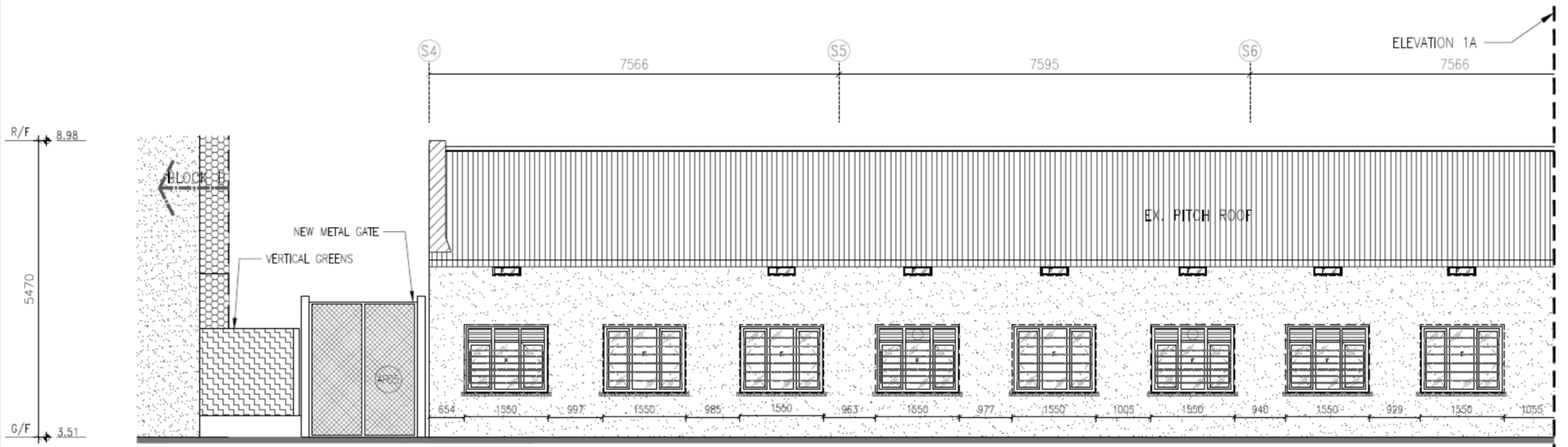
P:\H20002-Organic Farm\05_Presentation

26/8/2024

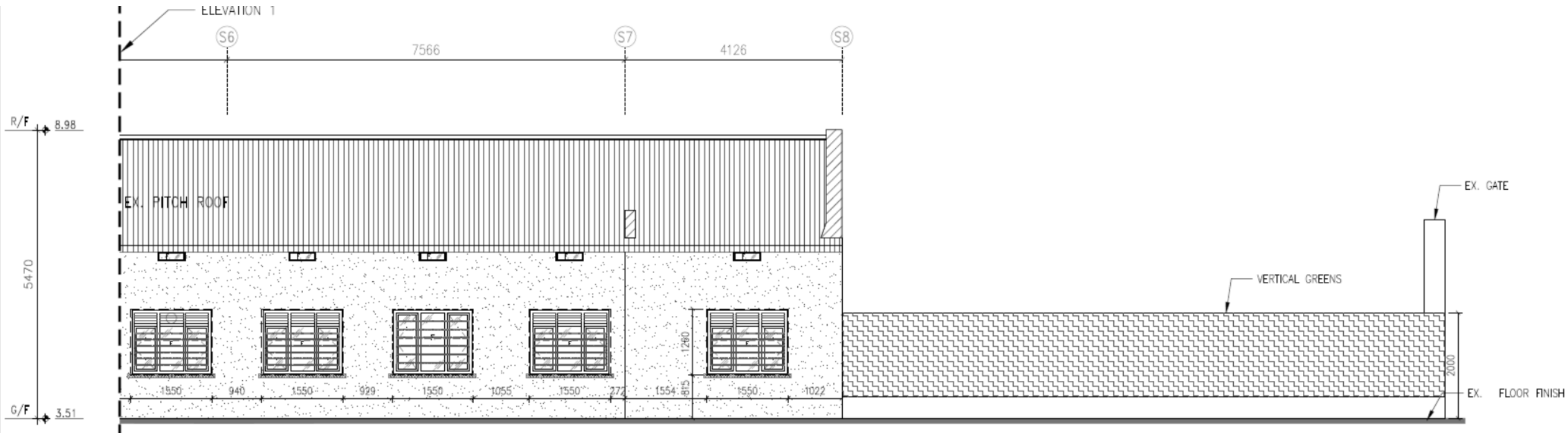
BLOCK C FLOOR PLAN



BLOCK C ELEVATIONS

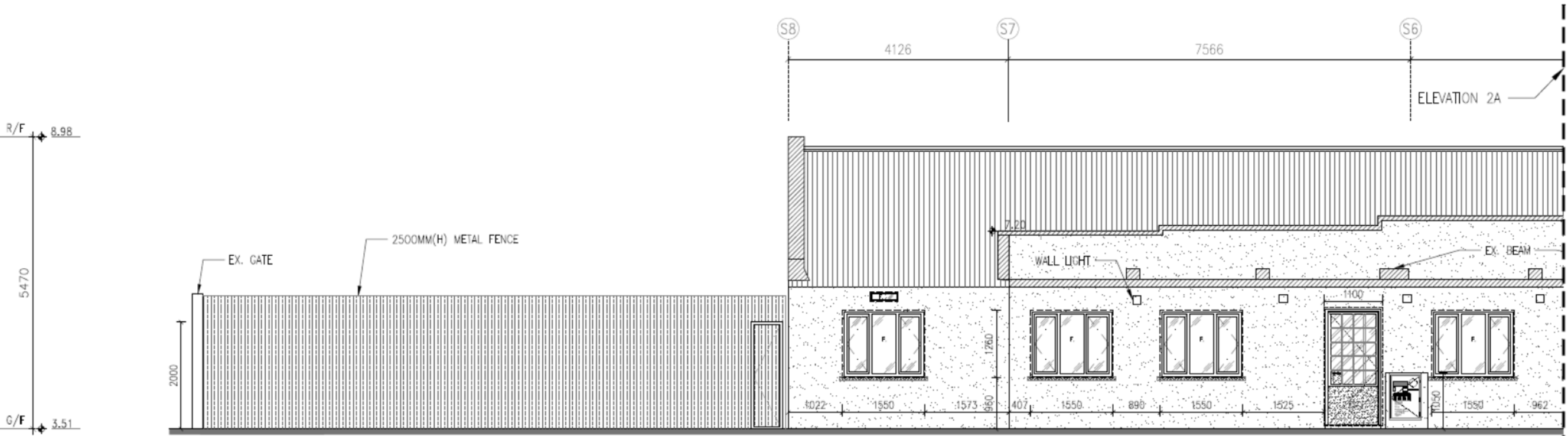


ELEVATION 1

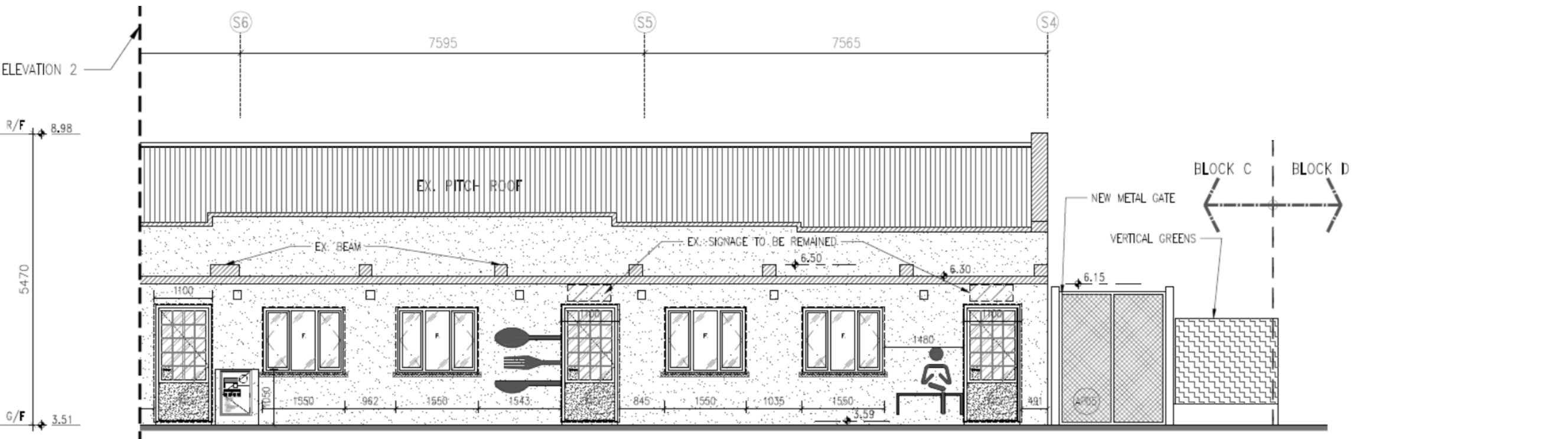


ELEVATION 1A

BLOCK C ELEVATIONS



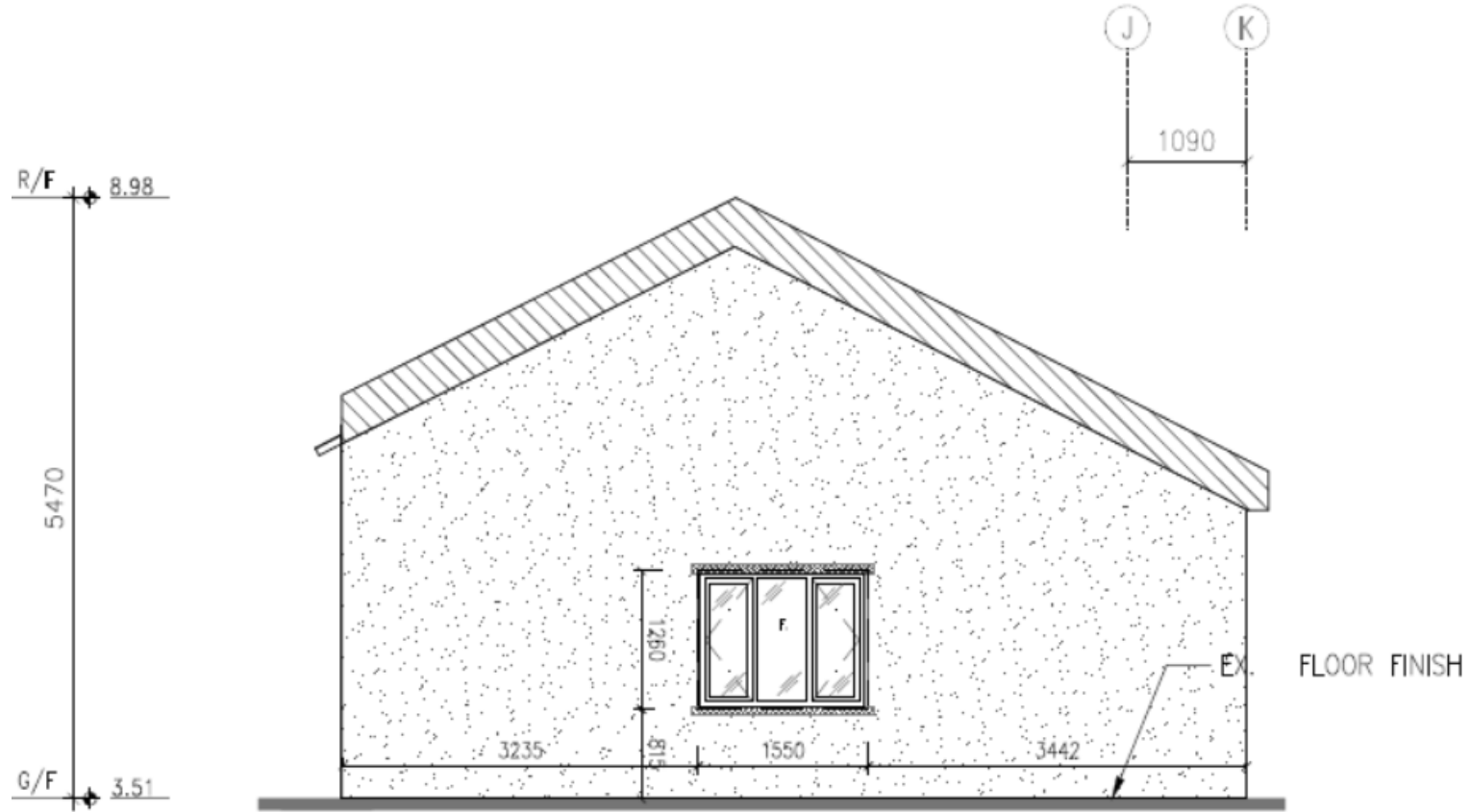
ELEVATION 2



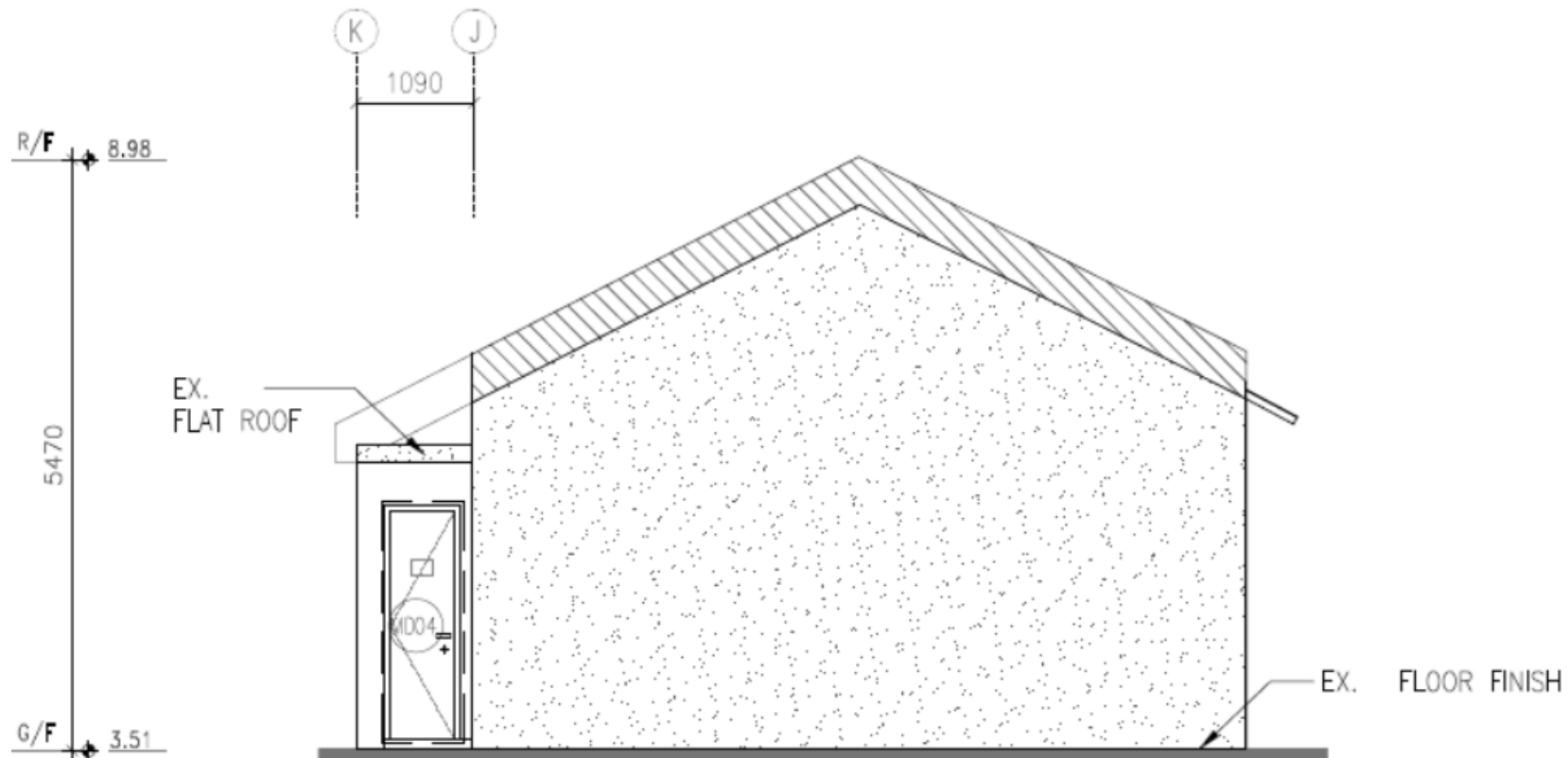
ELEVATION 2A

BLOCK C ELEVATIONS

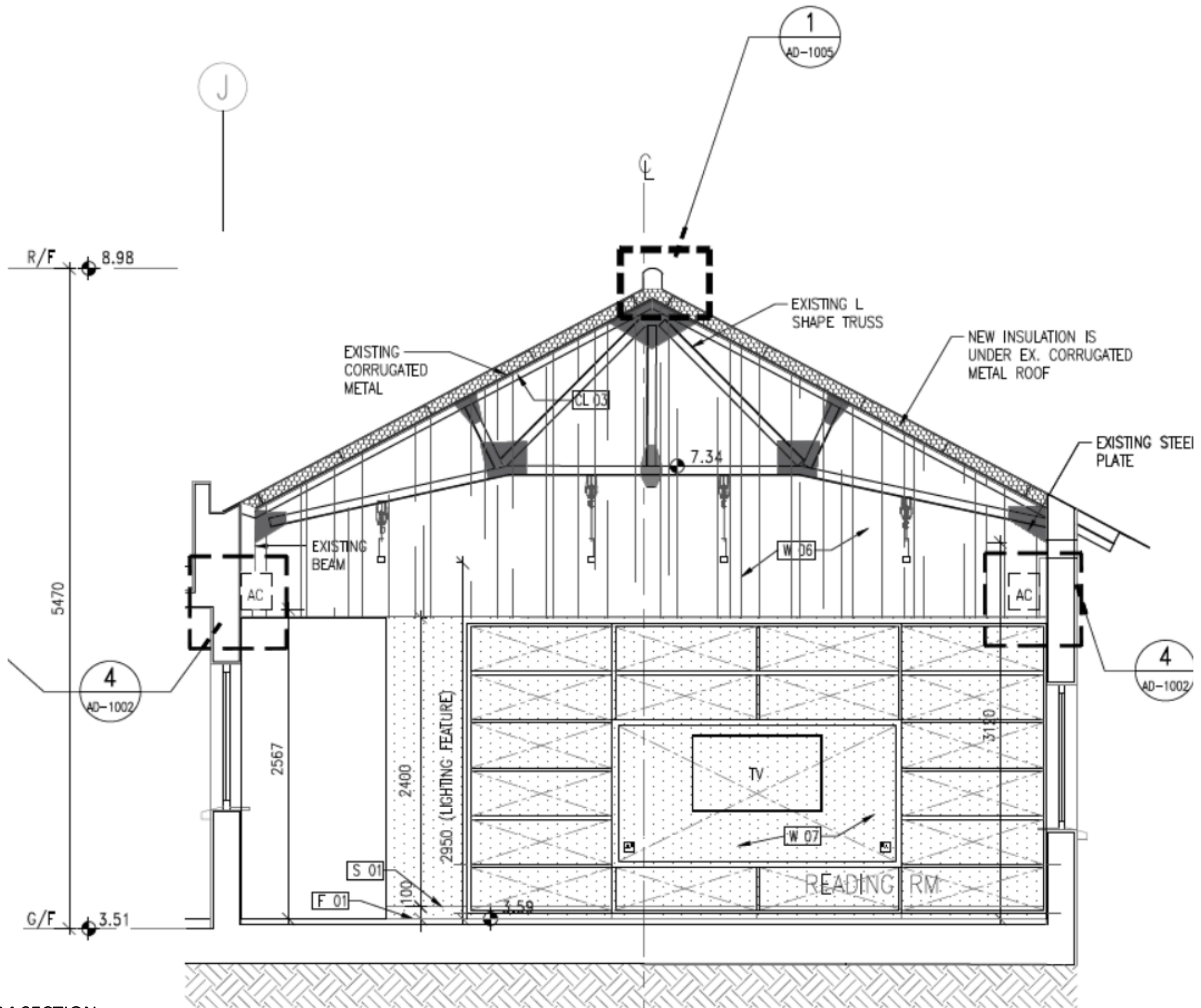
ELEVATION 3



ELEVATION 4

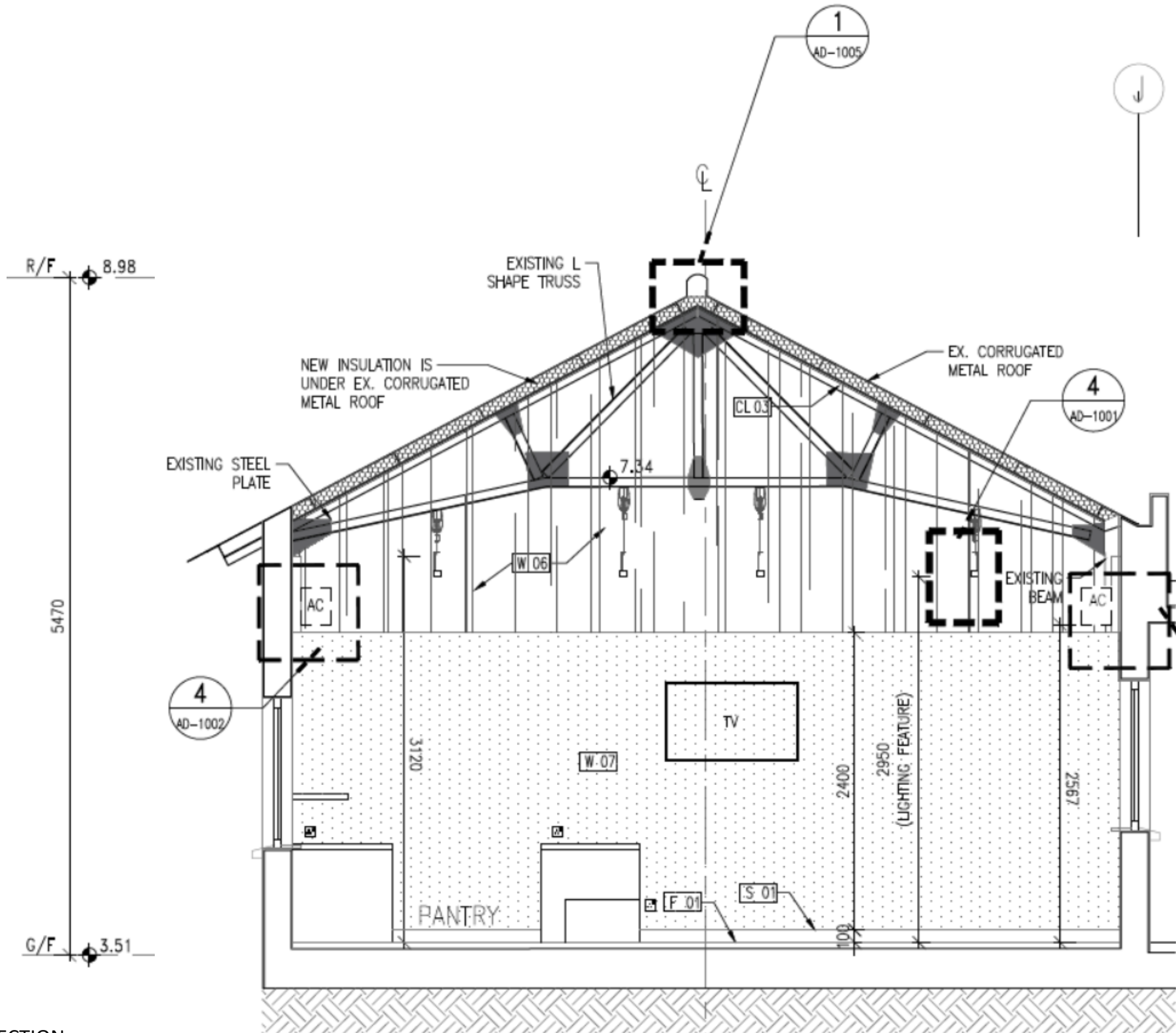


BLOCK C SECTIONS



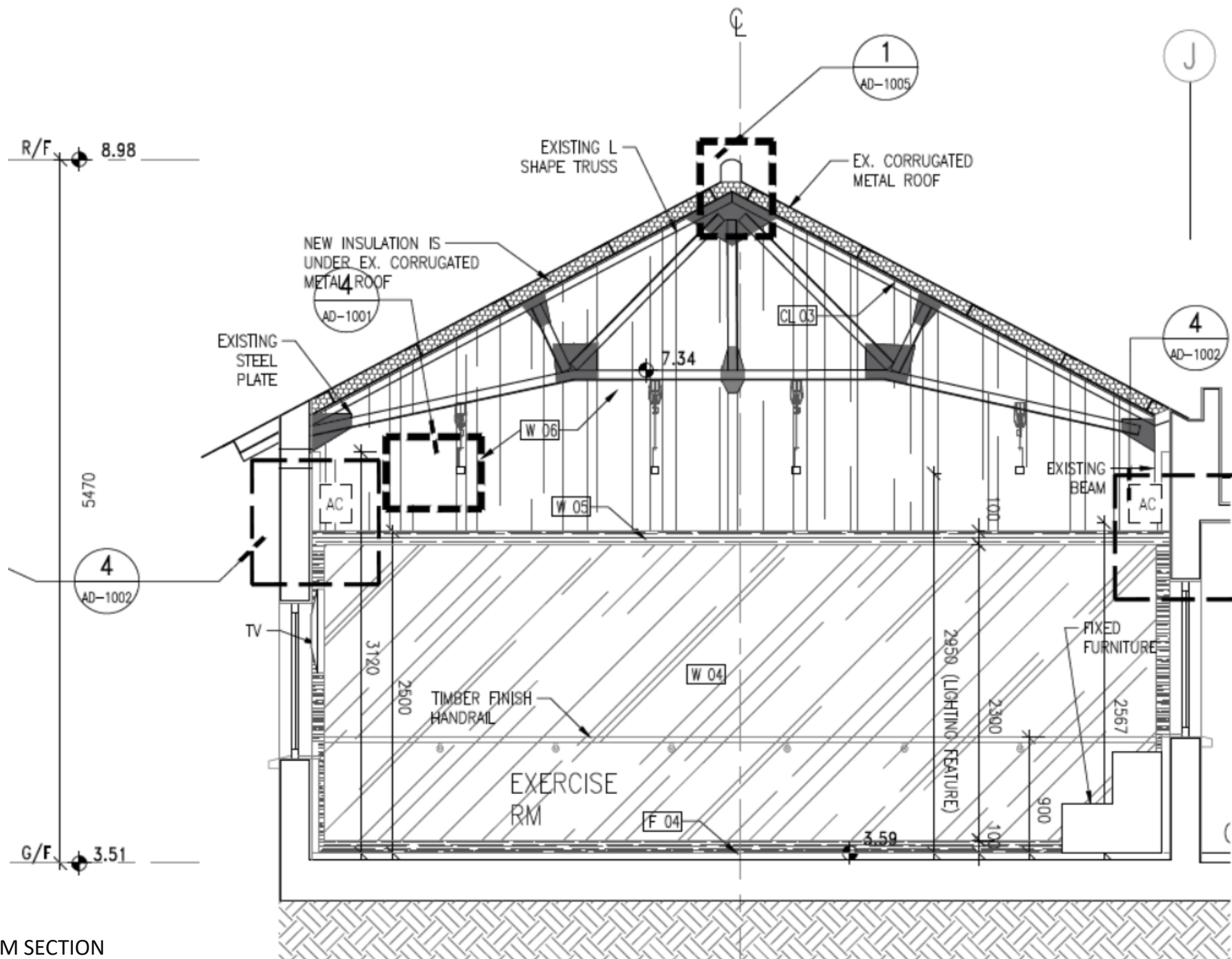
READING ROOM SECTION

BLOCK C SECTIONS



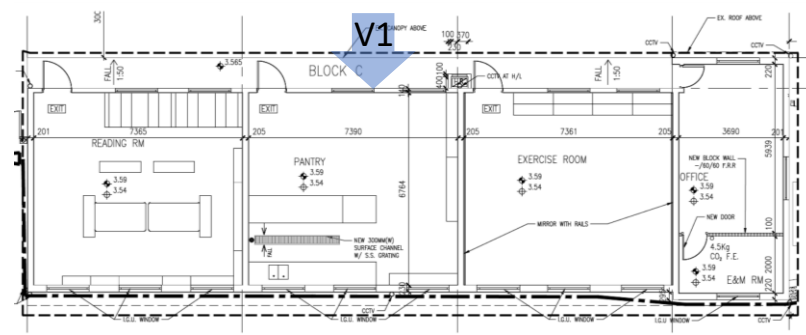
PANTRY SECTION

BLOCK C SECTIONS



EXERCISE ROOM SECTION

BLOCK C SITE PHOTO



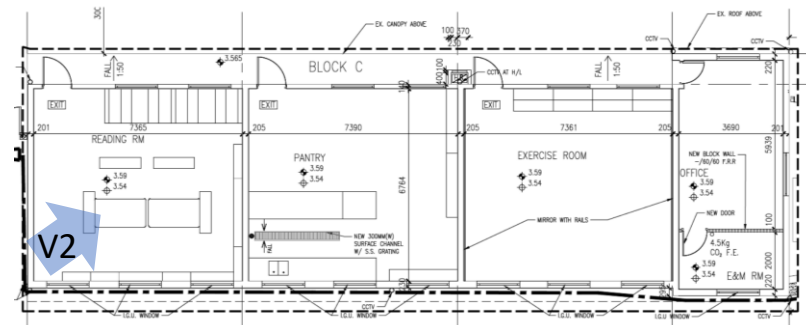
V1 BLOCK C EXTERIOR

Proposed Field Study Centre & Organic Farm by Revitalization of Former Chuk Hing Public School at GL in D.O. 104, Ha Chuk Yuen Tsuen, San Tin

P:\H20002-Organic Farm\05_Presentation

26/8/2024

BLOCK C SITE PHOTO



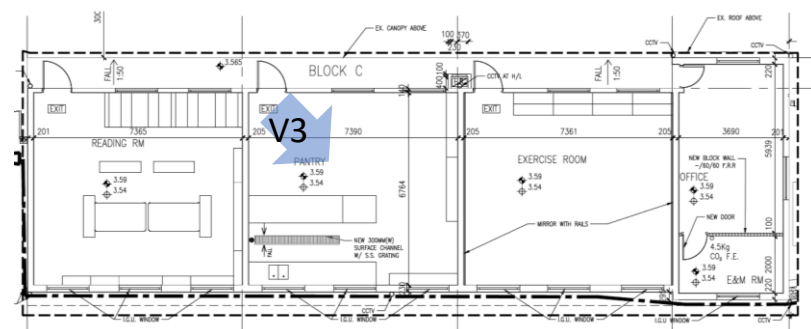
V2 READING ROOM

Proposed Field Study Centre & Organic Farm by Revitalization of Former Chuk Hing Public School at GL in D.O. 104, Ha Chuk Yuen Tsuen, San Tin

P:\H20002-Organic Farm\05_Presentation

26/8/2024

BLOCK C SITE PHOTO



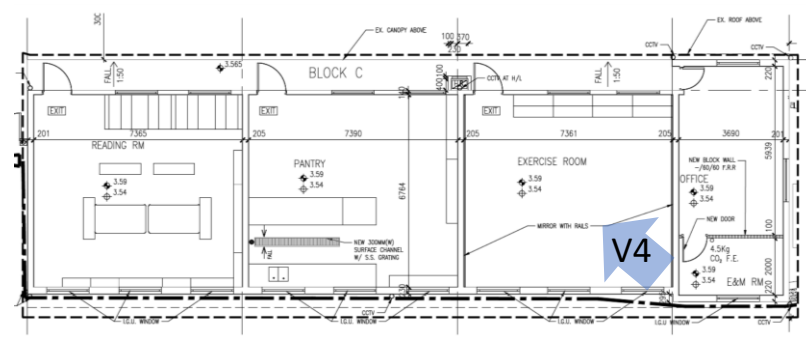
V3 READING ROOM

Proposed Field Study Centre & Organic Farm by Revitalization of Former Chuk Hing Public School at GL in D.O. 104, Ha Chuk Yuen Tsuen, San Tin

P:\H20002-Organic Farm\05_Presentation

26/8/2024

BLOCK C SITE PHOTO



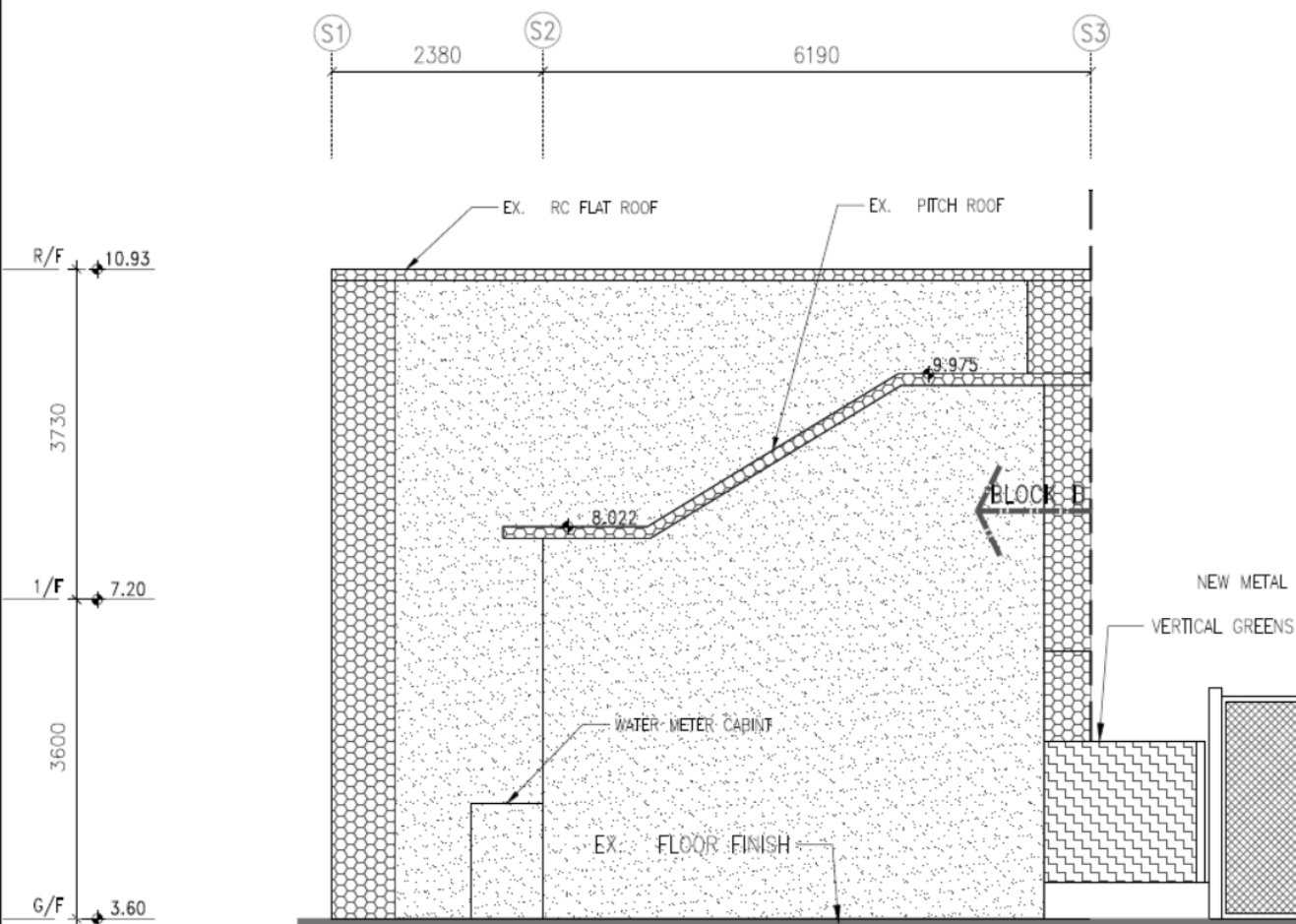
V4 EXERCISE ROOM

Proposed Field Study Centre & Organic Farm by Revitalization of Former Chuk Hing Public School at GL in D.O. 104, Ha Chuk Yuen Tsuen, San Tin

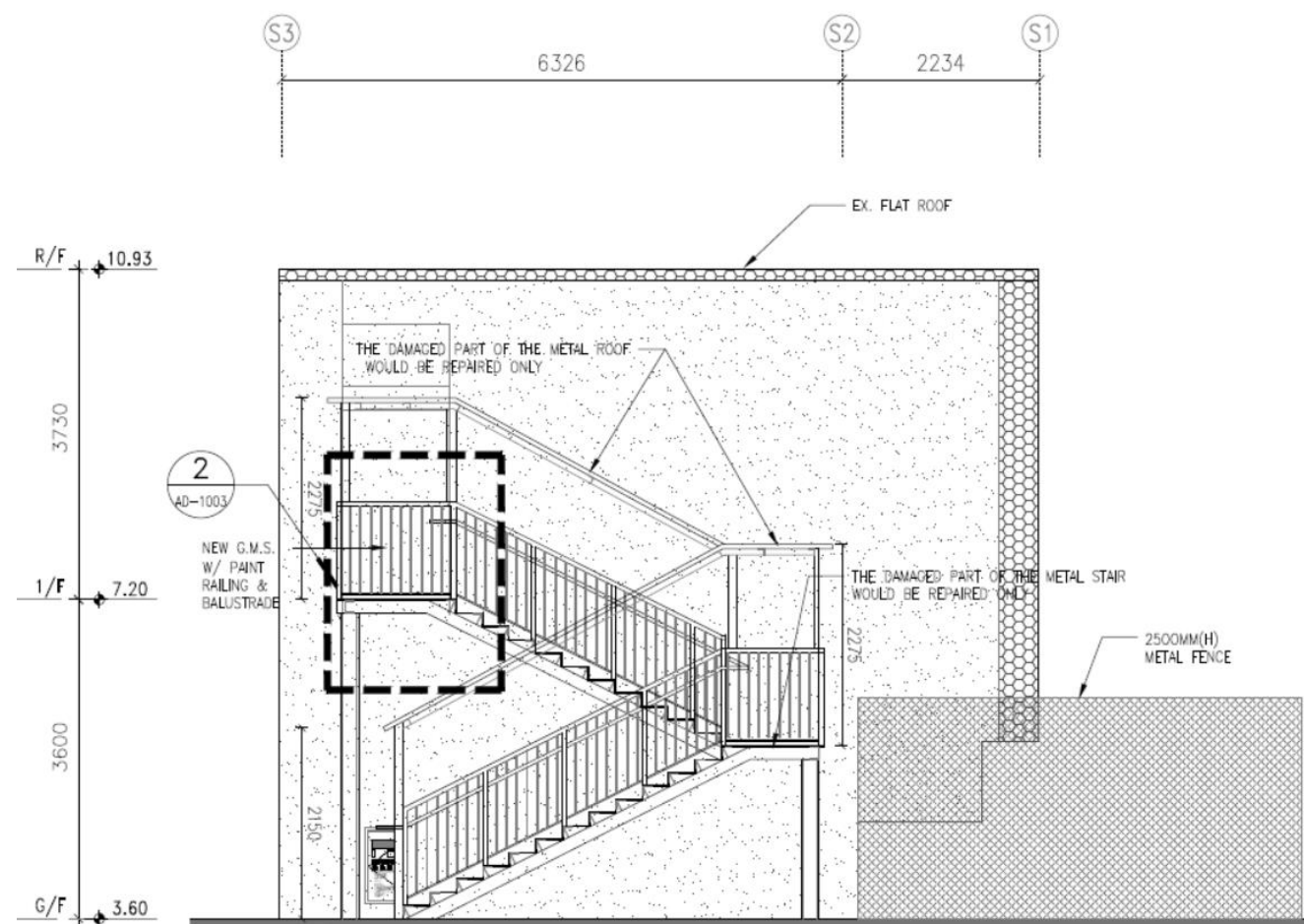
P:\H20002-Organic Farm\05_Presentation

26/8/2024

BLOCK D ELEVATIONS

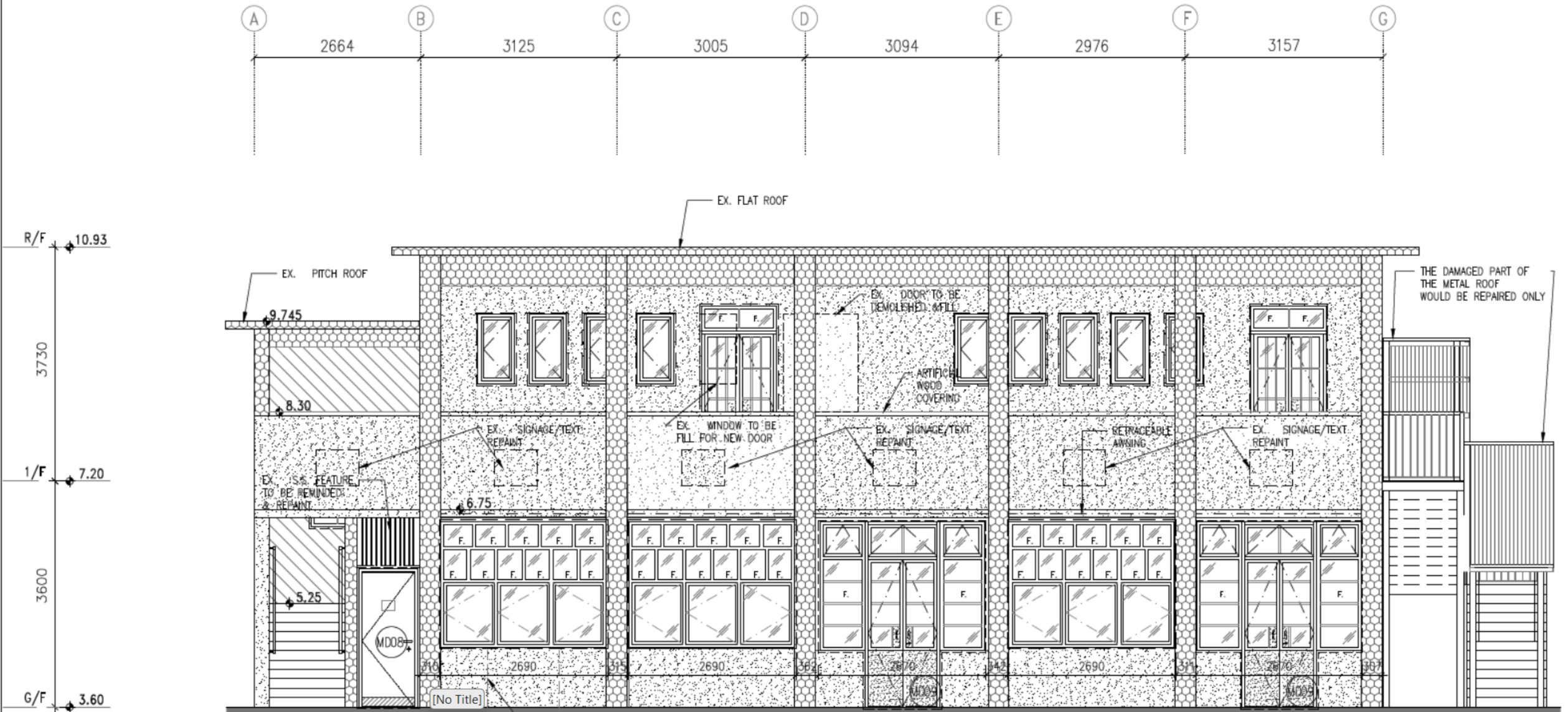


ELEVATION 1



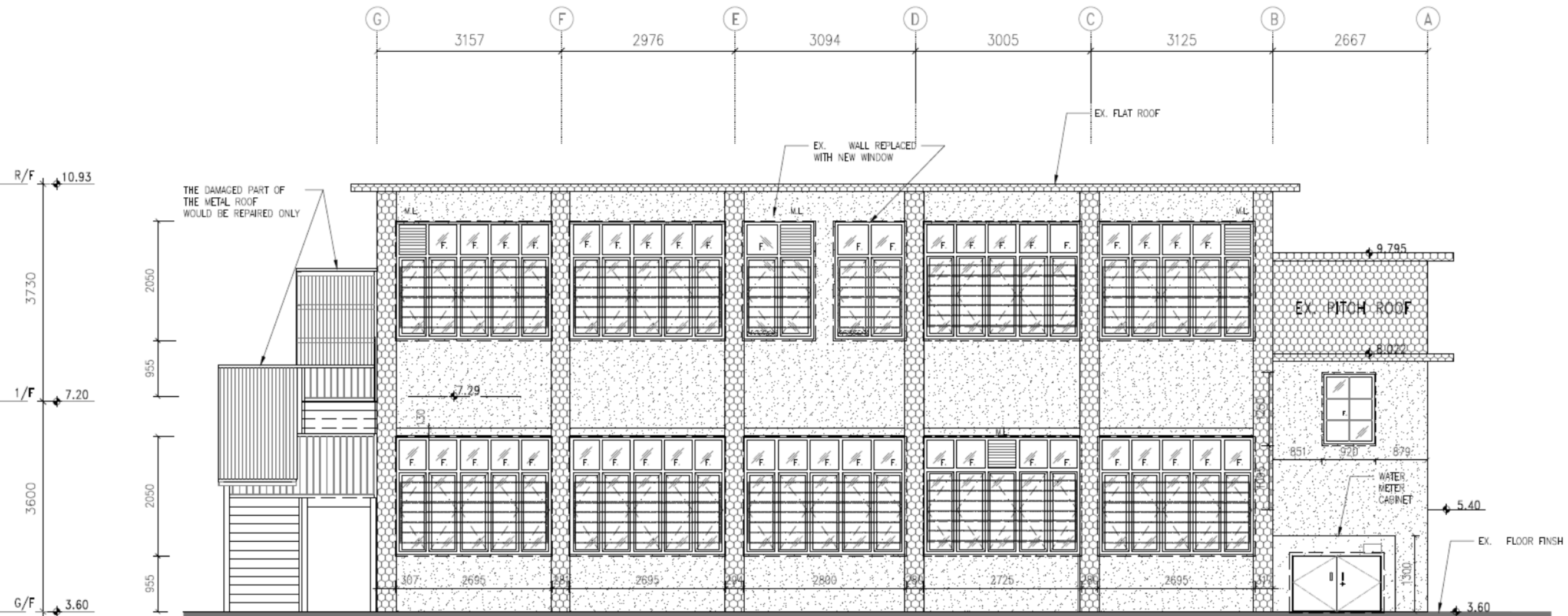
ELEVATION 2

BLOCK D ELEVATIONS



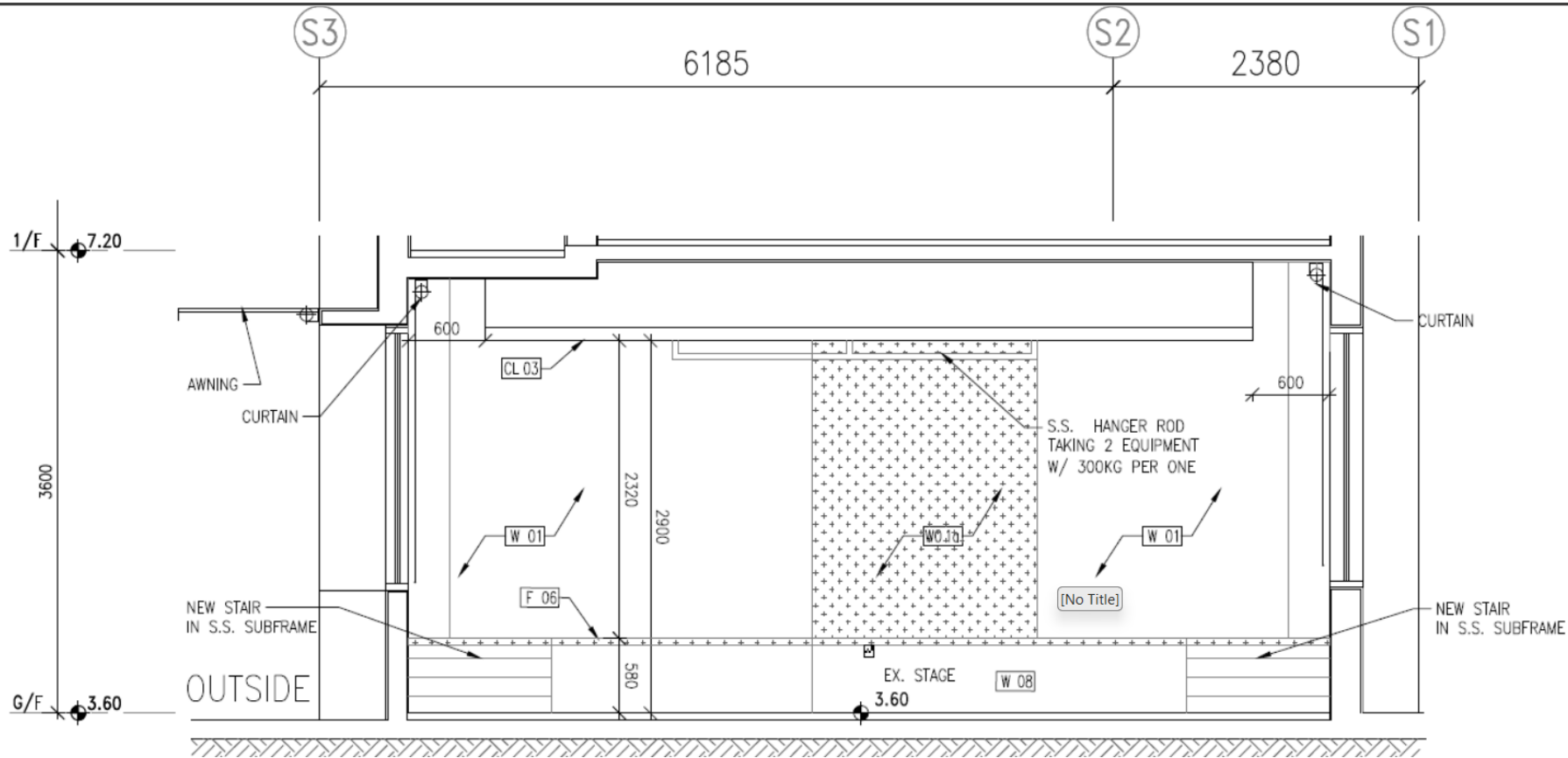
ELEVATION 3

BLOCK D ELEVATIONS

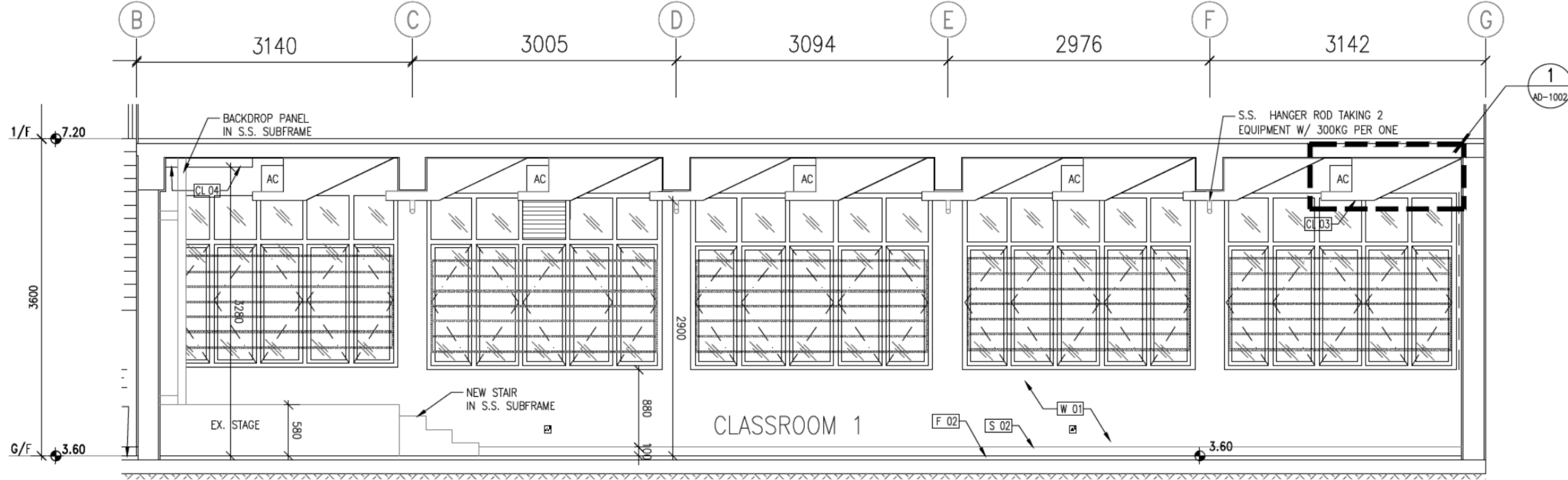


ELEVATION 4

BLOCK D SECTIONS

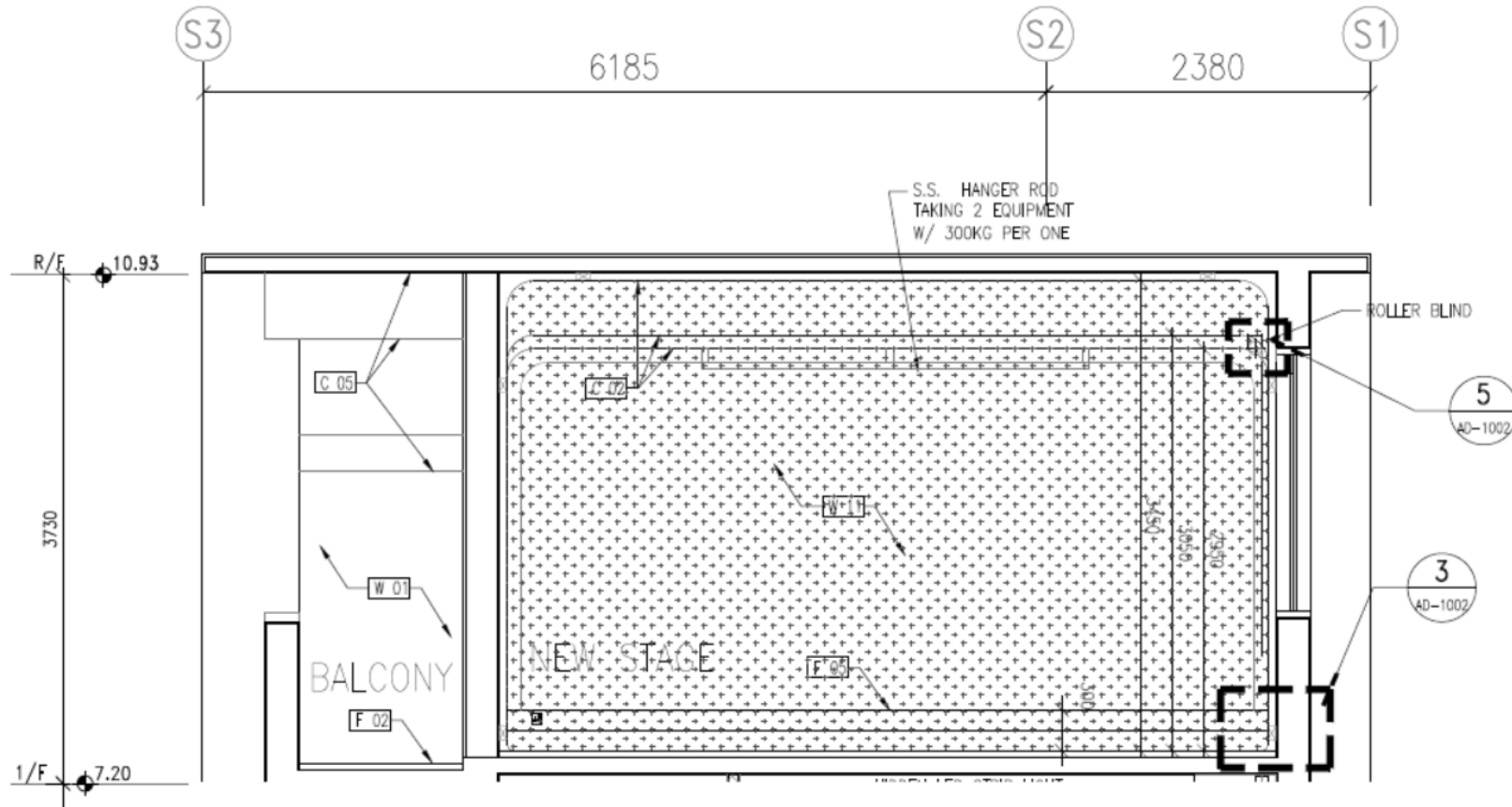


CLASSROOM 1 SECTION 1

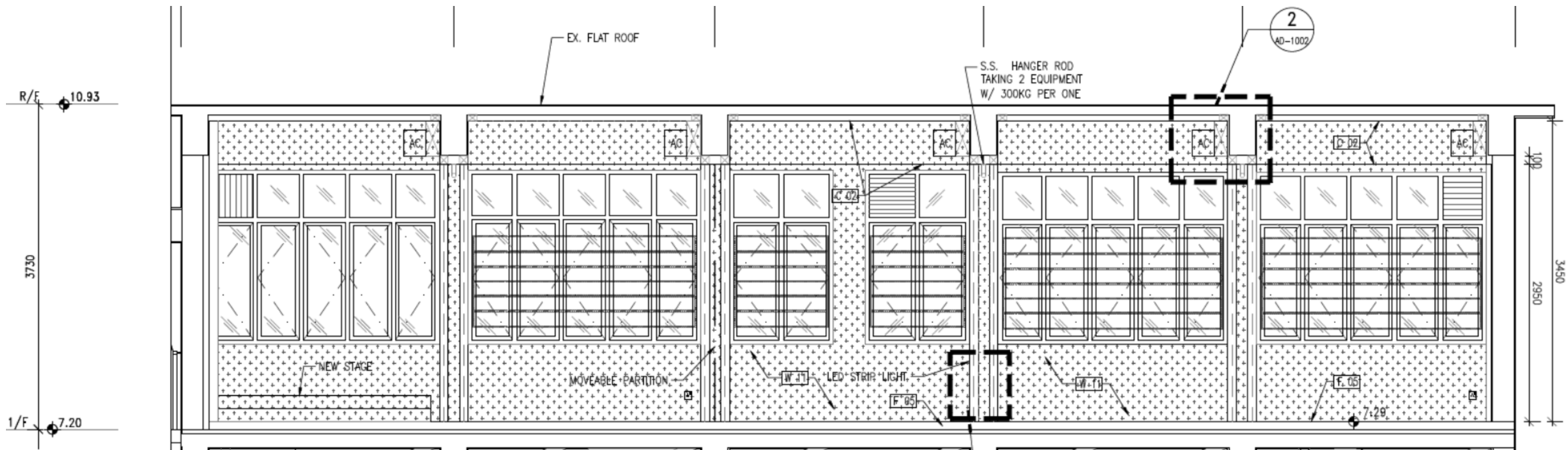


CLASSROOM 1 SECTION 2

BLOCK D SECTIONS

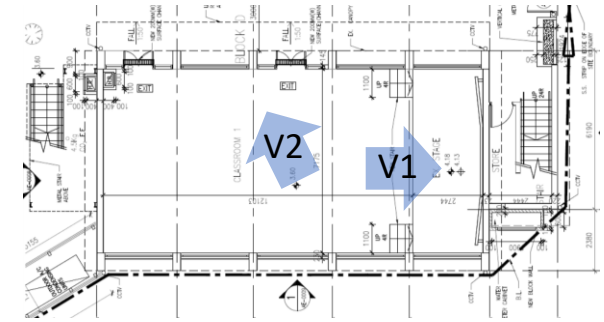


CLASSROOM 2&3 SECTION 1



CLASSROOM 2&3 SECTION 2

BLOCK D SECTIONS

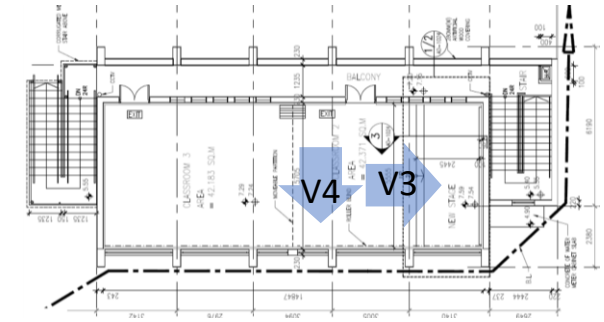


V1 CLASSROOM 1



V2 CLASSROOM 1

BLOCK D SECTIONS



V3 CLASSROOM 2 & 3



V4 CLASSROOM 2 & 3