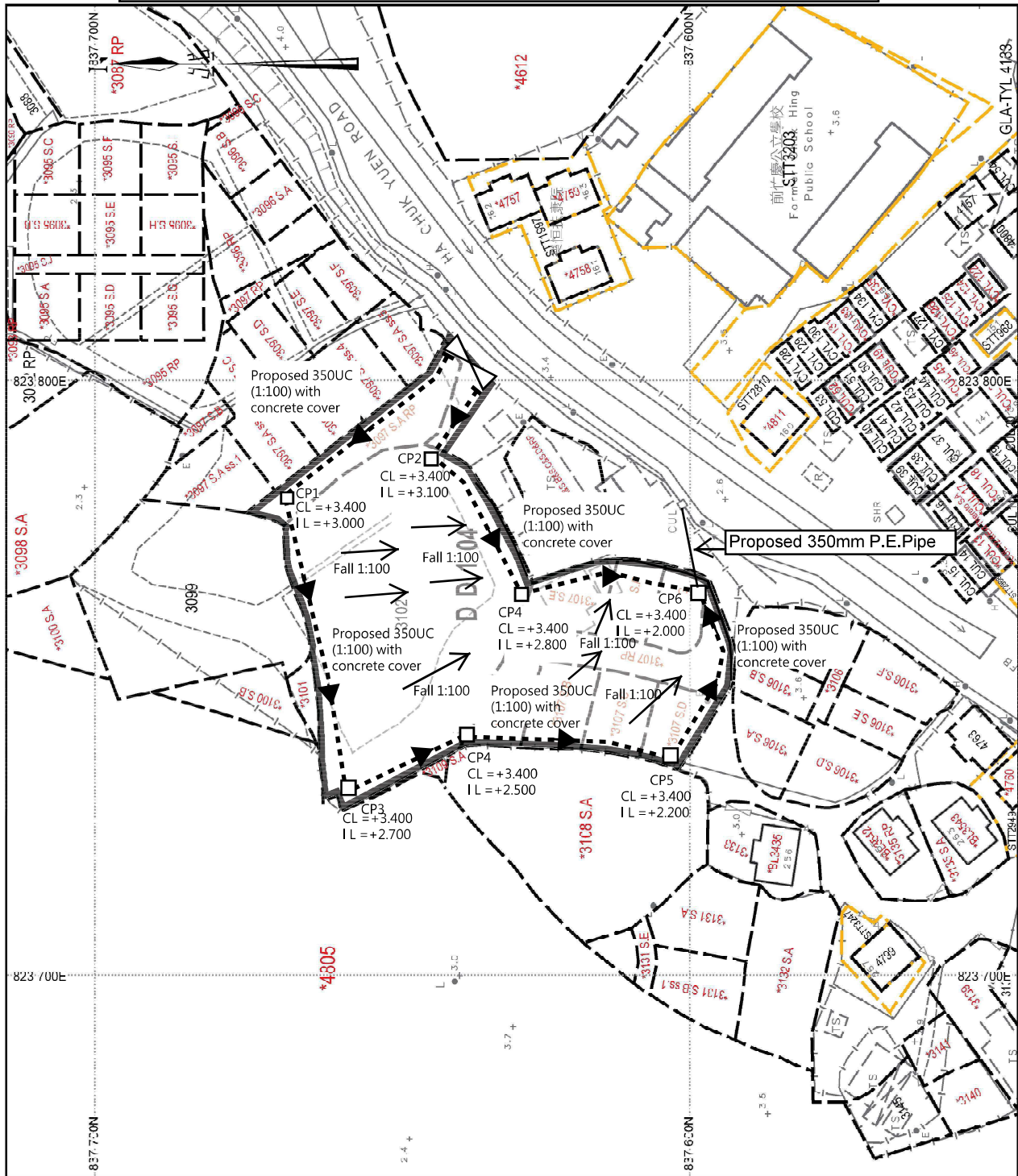


# 雨水排放建議圖



Site Catchment Area =  $3115 \text{ m}^2 = 0.003115 \text{ km}^2$   
 Peak runoff in  $\text{m}^3/\text{s} = 0.278 \times 0.95 \times 250 \text{ mm/hr} \times 0.003115 \text{ km}^2 = 0.20566 \text{ m}^3/\text{s}$   
 = 12344 liter/min Proposed 350UC

**Note:**

1. Catchpit (CP1-CP6) with desilting facility shall follow CEDD's standard drawing No. C2406I.
2. Catchpit and UC follows Typical Details of Geotechnical Manual for Slope Fig.8.10 and Fig.8.11 respectively.
3. The inverted level of the connection point shall be verified on site prior the commencement of work
4. Grating Concrete Cover follows CEDD's standard drawing No. C2412E: U-CHANNELS WITH PRECAST CONCRETE SLABS