

**LOCATION OF THE APPLICATION SITE**

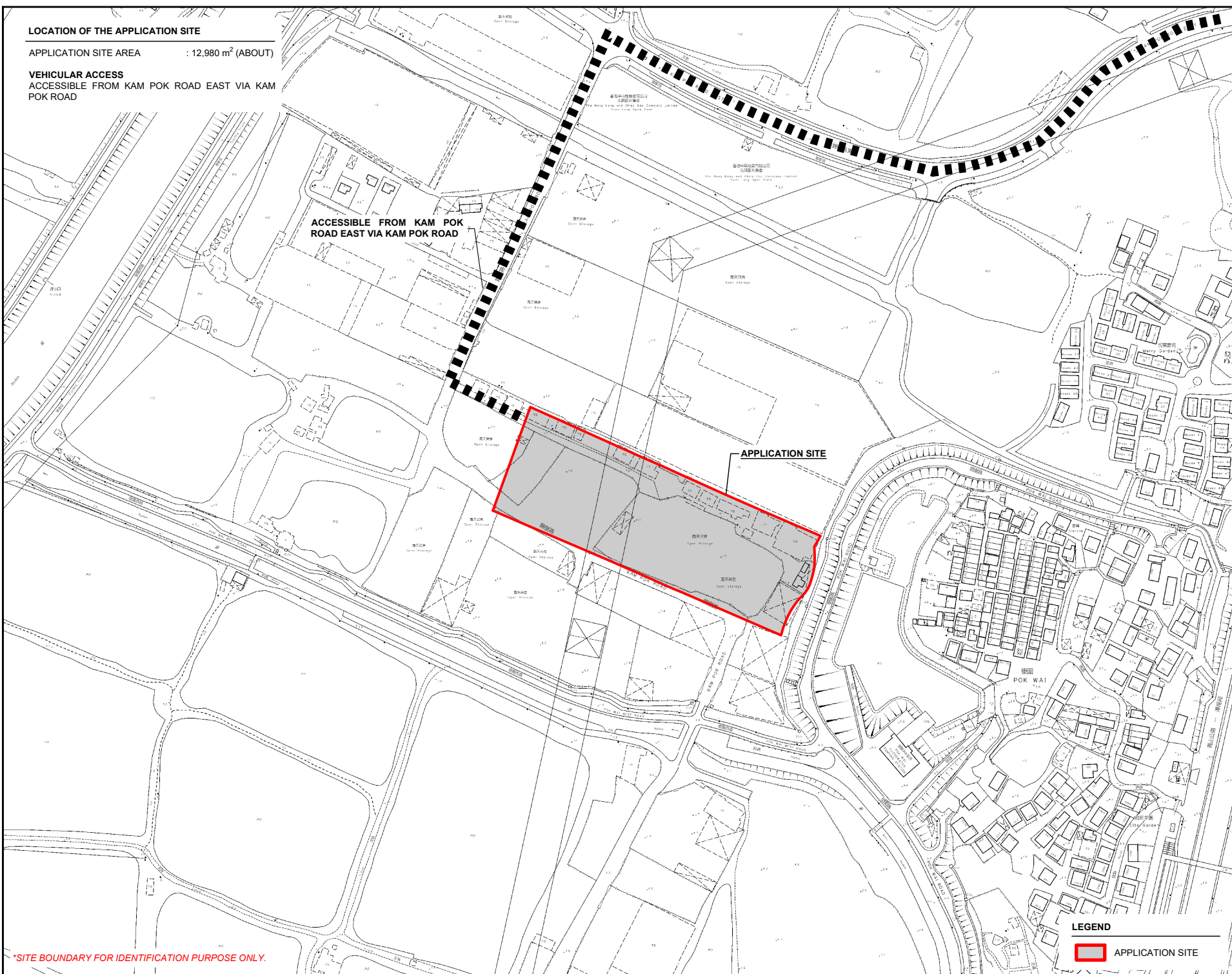
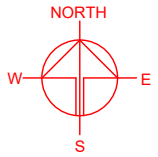
APPLICATION SITE AREA : 12,980 m<sup>2</sup> (ABOUT)

**VEHICULAR ACCESS**

ACCESSIBLE FROM KAM POK ROAD EAST VIA KAM POK ROAD


ACCESSIBLE FROM KAM POK ROAD EAST VIA KAM POK ROAD

APPLICATION SITE



\*SITE BOUNDARY FOR IDENTIFICATION PURPOSE ONLY.

**LEGEND**

 APPLICATION SITE

PLANNING CONSULTANT	
<b>TAI WAH</b>	DEVELOPMENT CONSULTANTS LIMITED
PROJECT	
PROPOSED WAREHOUSE (EXCLUDING DANGEROUS GOODS GODOWN) WITH ANCILLARY FACILITIES AND ASSOCIATED FILLING OF LAND FOR A PERIOD OF 3 YEARS	
TEMPORARY (EXCLUDING DANGEROUS GOODS GODOWN) WITH ANCILLARY FACILITIES AND ASSOCIATED FILLING OF LAND FOR A PERIOD OF 3 YEARS	
SITE LOCATION	
LOTS 3723 S.B ss 1 (PART) AND 3723 S.B ss 2 (PART) IN D.D. 104, TAI SANG WAI, YUEN LONG, NEW TERRITORIES	
SCALE	
1 : 3000 @ A4	
DRAWN BY	DATE
MN	5.2.2025
REVISED BY	DATE
APPROVED BY	DATE
DWG. TITLE	
LOCATION PLAN	
DWG. NO.	VER.
PLAN 1	001

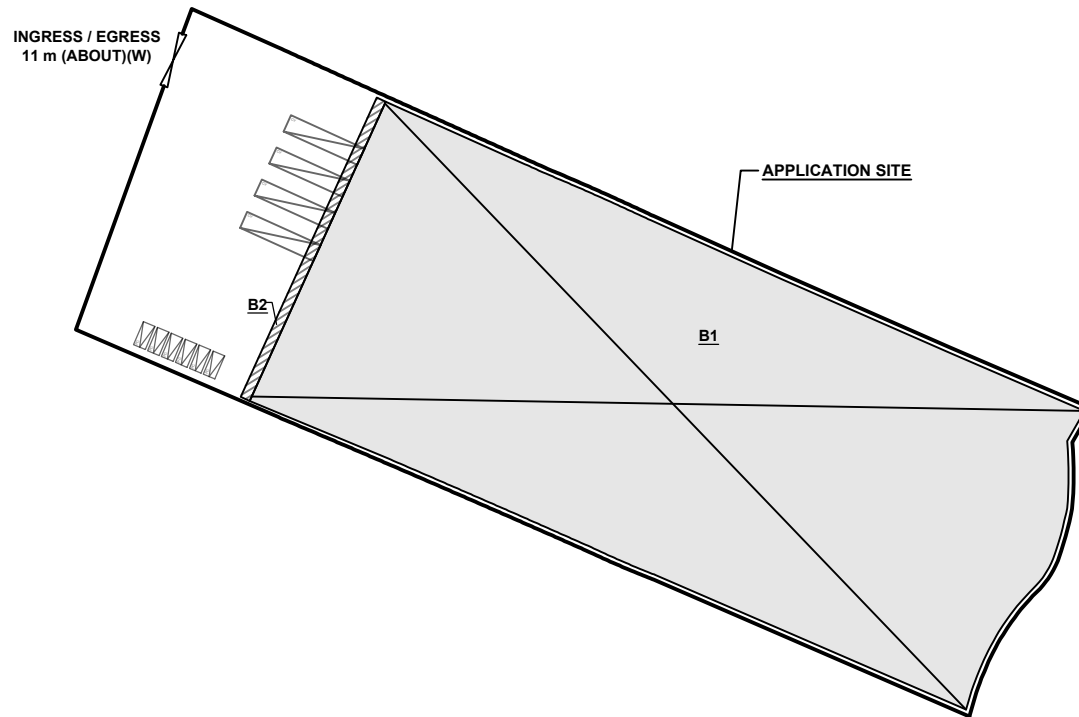
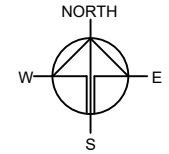




**DEVELOPMENT PARAMETERS**

APPLICATION SITE AREA	: 12,980 m <sup>2</sup>	(ABOUT)
COVERED AREA	: 10,052 m <sup>2</sup>	(ABOUT)
UNCOVERED AREA	: 2,928 m <sup>2</sup>	(ABOUT)
PLOT RATIO	: 1.5	(ABOUT)
SITE COVERAGE	: 77 %	(ABOUT)
NO. OF STRUCTURE	: 2	
DOMESTIC GFA	: N/A	
NON-DOMESTIC GFA	: 19,974 m <sup>2</sup>	(ABOUT)
TOTAL GFA	: 19,974 m <sup>2</sup>	(ABOUT)
BUILDING HEIGHT	: 7 m - 11 m	(ABOUT)
NO. OF STOREY	: 1 - 2	

STRUCTURE	USE	COVERED AREA	GROSS FLOOR AREA	BUILDING HEIGHT
B1	WAREHOUSE FOR STORAGE OF VEHICLES SITE OFFICE, WASHROOM	9,922 m <sup>2</sup> (ABOUT)	19,844 m <sup>2</sup> (ABOUT)	11 m (ABOUT)(2-STOREY)
B2	RAIN SHELTER FOR L/U/L ACTIVITIES	130 m <sup>2</sup> (ABOUT)	130 m <sup>2</sup> (ABOUT)	7 m (ABOUT)(1-STOREY)
<b>TOTAL</b>		<b>10,052 m<sup>2</sup> (ABOUT)</b>	<b>19,974 m<sup>2</sup> (ABOUT)</b>	



**PARKING AND LOADING / UNLOADING PROVISIONS**

NO. OF PRIVATE CAR PARKING SPACE	: 6
DIMENSION OF PARKING SPACE	: 5 m (L) x 2.5 m (W)
NO. OF L/U/L SPACE FOR CONTAINER VEHICLE	: 4
DIMENSION OF L/U/L SPACE	: 16 m (L) x 3.5 m (W)

**LEGEND**

	APPLICATION SITE
	STRUCTURE (ENCLOSED)
	STRUCTURE (CANOPY)
	PARKING SPACE (PRIVATE CAR)
	L/U/L SPACE (CONTAINER VEHICLE)
	INGRESS / EGRESS

PLANNING CONSULTANT

**TAI WAH** | DEVELOPMENT CONSULTANTS LIMITED

PROJECT

PROPOSED WAREHOUSE (EXCLUDING DANGEROUS GOODS GODOWN) WITH ANCILLARY FACILITIES AND ASSOCIATED FILLING OF LAND FOR A PERIOD OF 3 YEARS

SITE LOCATION

LOTS 3723 S.B ss.1 (PART) AND 3723 S.B ss.2 (PART) IN D.D. 104, TAI SANG WAI, YUEN LONG, NEW TERRITORIES

SCALE

1 : 1500 @ A4

DRAWN BY MN	DATE 3.2.2025
CHECKED BY	DATE
APPROVED BY	DATE

DWG. TITLE

LAYOUT PLAN


DWG. NO. PLAN 4	VER. 001
--------------------	-------------

**CONDITION OF THE APPLICATION SITE IN 1990**

APPLICATION SITE AREA : 12,980 m<sup>2</sup> (ABOUT)  
 DATE OF AERIAL PHOTO : 18/8/1990  
 AERIAL PHOTO NO. : A22172  
 SOURCE OF AERIAL PHOTO : LANDS DEPARTMENT

DETAILS OF SOILED GROUND  
 AREA OF SOILED GROUND : 12,980 m<sup>2</sup> (ABOUT)

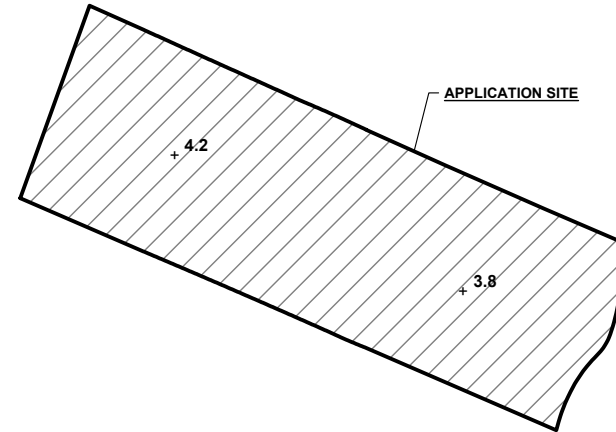





**LEGEND**  
 APPLICATION SITE

**PROPOSED FILLING OF LAND AND POND**

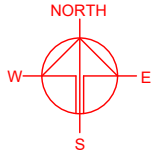
APPLICATION SITE AREA : 12,980 m<sup>2</sup> (ABOUT)  
 COVERED BY STRUCTURE : 10,052 m<sup>2</sup> (ABOUT)

PROPOSED FILLING OF LAND AREA : 12,980 m<sup>2</sup> (ABOUT)  
 DEPTH OF LAND FILLING AREA : NOT MORE THAN 0.2 m  
 PROPOSED SITE LEVEL : +3.8 mPD - +4.2 mPD (ABOUT)  
 MATERIAL OF LAND FILLING : CONCRETE  
 USE : PARKING AND LOADING / UNLOADING SPACE, SITE FORMATION OF STRUCTURE AND CIRCULATION AREA



**LEGEND**  
 APPLICATION SITE  
 FILLING OF LAND AREA  
 4.4 SITE LEVEL

*\*SITE LEVELS ARE FOR REFERENCE ONLY.  
 EXACT SITE LEVELS ARE SUBJECT TO DETAILED SURVEY.*



PLANNING CONSULTANT  
**TAI WAH** DEVELOPMENT CONSULTANTS LIMITED

PROJECT  
 PROPOSED TEMPORARY WAREHOUSE (EXCLUDING DANGEROUS GOODS GODOWN) WITH ANCILLARY FACILITIES AND ASSOCIATED FILLING OF LAND FOR A PERIOD OF 3 YEARS

SITE LOCATION  
 LOTS 3723 S.B ss.1 (PART) AND 3723 S.B ss.2 (PART) IN D.D. 104, TAI SANG WAI, YUEN LONG, NEW TERRITORIES

SCALE  
 1 : 3000 / 2500 @ A4

DRAWN BY: MN DATE: 5.2.2025

REVISED BY: DATE:

APPROVED BY: DATE:

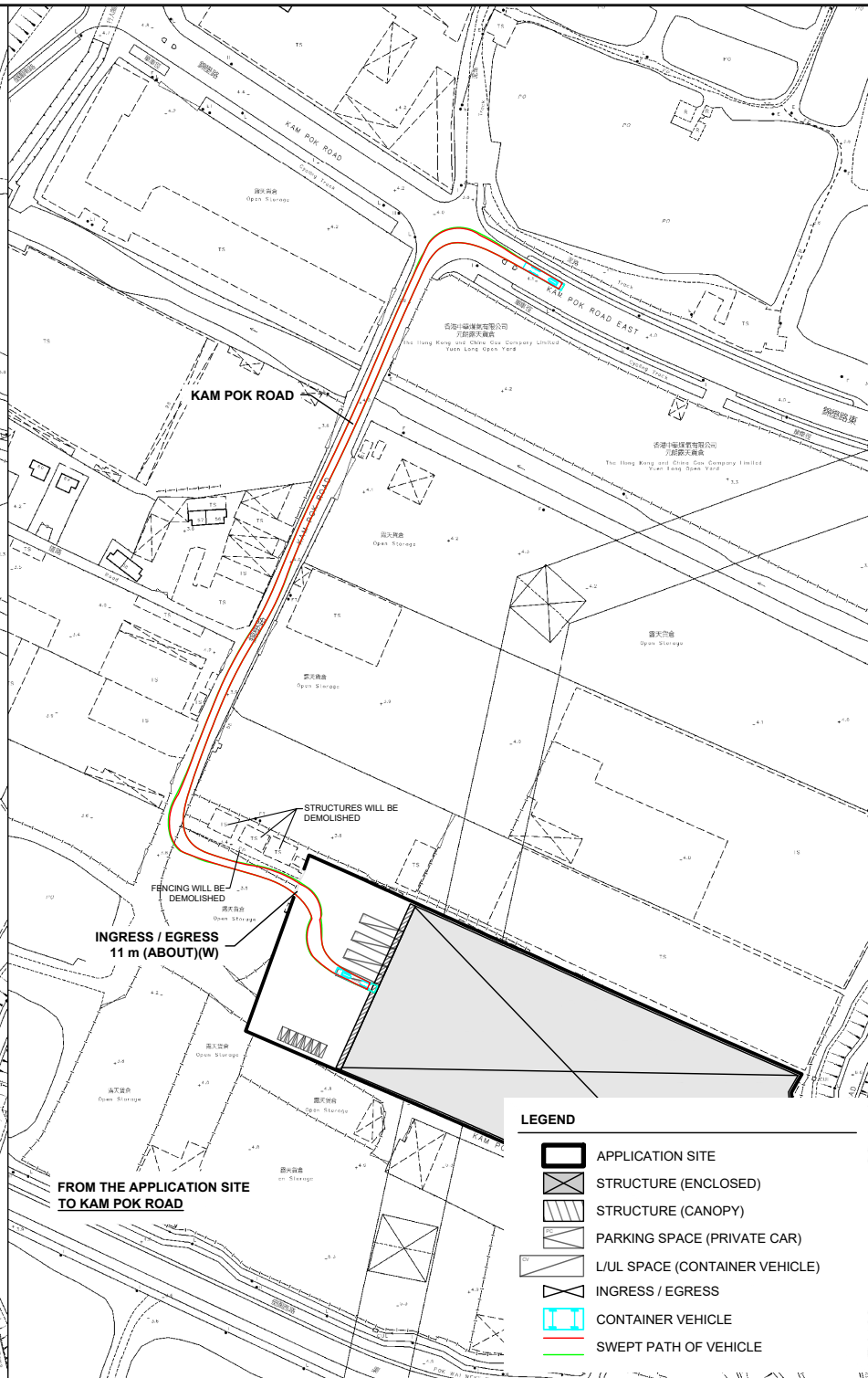
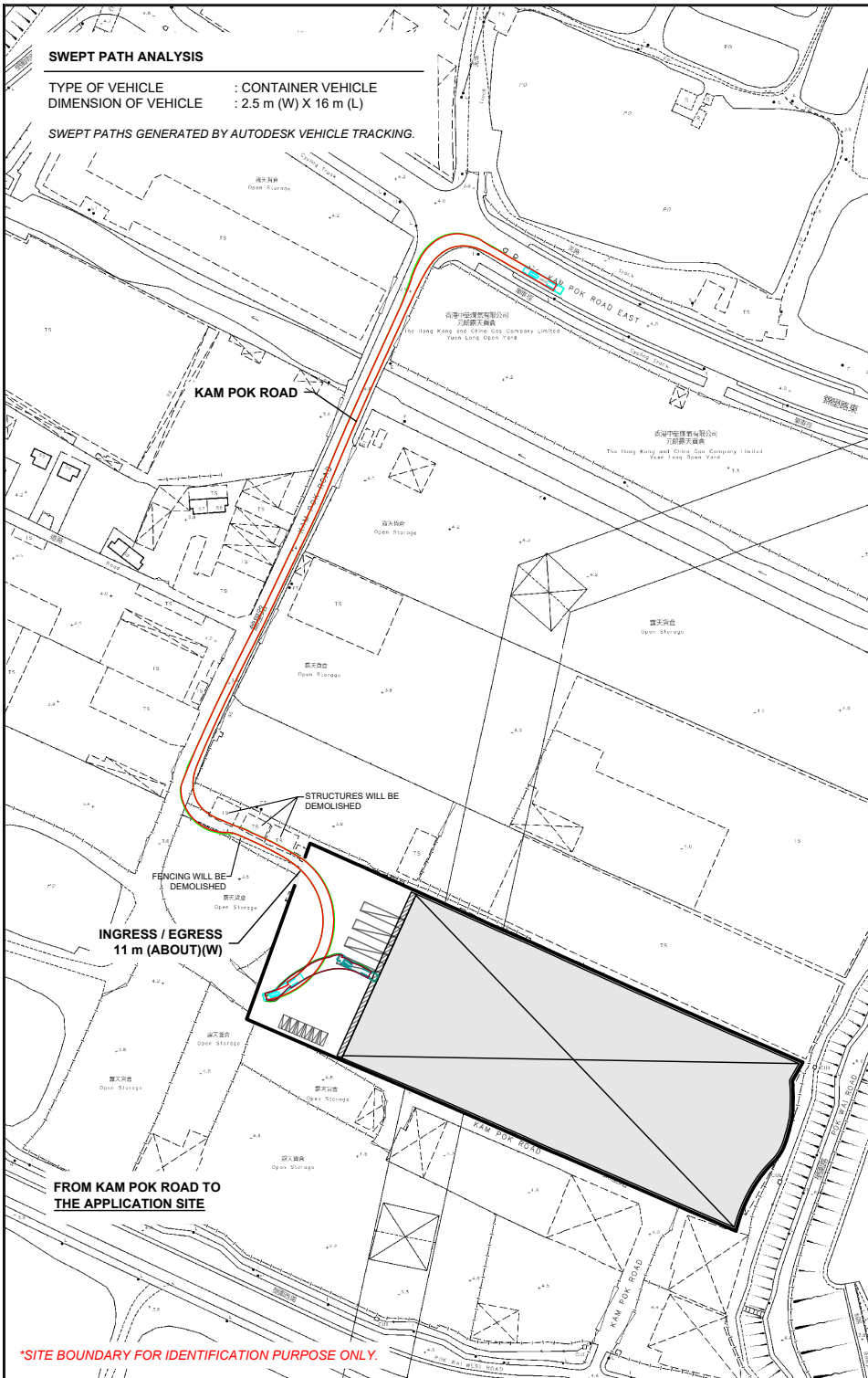
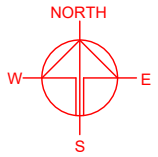
DWG. TITLE  
 FILLING OF LAND

DWG NO.: PLAN 5 VER.: 001

**SWEPT PATH ANALYSIS**

TYPE OF VEHICLE : CONTAINER VEHICLE  
 DIMENSION OF VEHICLE : 2.5 m (W) X 16 m (L)

SWEPT PATHS GENERATED BY AUTODESK VEHICLE TRACKING.



**LEGEND**

- APPLICATION SITE
- STRUCTURE (ENCLOSED)
- STRUCTURE (CANOPY)
- PARKING SPACE (PRIVATE CAR)
- L/UL SPACE (CONTAINER VEHICLE)
- INGRESS / EGRESS
- CONTAINER VEHICLE
- SWEEP PATH OF VEHICLE

\*SITE BOUNDARY FOR IDENTIFICATION PURPOSE ONLY.

PLANNING CONSULTANT

**TAI WAH** DEVELOPMENT CONSULTANTS LIMITED

PROJECT

PROPOSED WAREHOUSE (EXCLUDING DANGEROUS GOODS GODOWN) WITH ANCILLARY FACILITIES AND ASSOCIATED FILLING OF LAND FOR A PERIOD OF 3 YEARS

SITE LOCATION

LOTS 3723 S.B ss 1 (PART) AND 3723 S.B ss 2 (PART) IN D.D. 104, TAI SANG WAI, YUEN LONG, NEW TERRITORIES

SCALE

1 : 2000 @ A4

DRAWN BY

MN

DATE

5.2.2025

CHECKED BY

DATE

APPROVED BY

DATE

DWG. TITLE

SWEPT PATH ANALYSIS

DWG NO.

PLAN 6

VER.

001