

Annex 1

Tree Survey Report

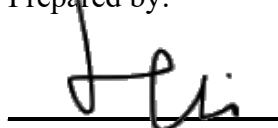
Tree Survey Report

Date of Survey: 28th October 2024

Location:

Lots 1213 RP, 1215 RP, 1216 RP, 1217 S.C RP (Part), 2579 (Part), 2583 (Part) and 2584 (Part) in D.D. 104 and Adjoining Government Land, Ngau Tam Mei, Yuen Long

Prepared by:



Mak Ka Hei

Registered Arborist

Date: 29th October 2024

Table of contents

1. Introduction	3
2. Summary of Existing Trees	4

Appendix:

- I. Tree Survey Plan
- II. Tree Survey Schedule
- III. Photo Records

Disclaimer:

The tree survey conducted indicates the condition of the surveyed trees at the time of inspection only. The assessments of amenity value, form, health and structural condition of the trees surveyed are based on visual inspection from the ground only. No aerial inspection, root digging or mapping, or diagnostic testing has been conducted as part of this survey. Wing Ho Yuen Landscaping Company Limited cannot accept responsibility for future failure or defects detected after the time of inspection of the trees surveyed in this report.

1. Introduction

The survey conducted is to record all the existing trees in the tree survey boundary. The survey include tree species identification, tree tagging with durable labels, the measurements of overall tree height, Diameter at Breast Height (DBH), average crown spread, the evaluation on amenity value, form, health and structural conditions.

The tree survey was conducted on 28th October 2024. Plants with DBH less than 95mm were not recorded in the survey.

2. Summary of Existing Trees

The surveyed site is located at Lots 1213 RP, 1215 RP, 1216 RP, 1217 S.C RP (Part), 2579 (Part), 2583 (Part) and 2584 (Part) in D.D. 104 and Adjoining Government Land, Ngau Tam Mei, Yuen Long.

At the time of inspection on 28th October 2024, **34 nos.** trees were found within the Site. **No** dead tree was recorded in the surveyed area. Location of individual tree refers to Appendix I.

Details of tree conditions and photo records for individual tree are recorded in the Appendix II and Appendix III respectively.

Appendix I – Tree Survey Plan



SITE LOCATION LOTS 1213 RP, 1215 RP, 1216 RP, 1217 S.C RP (PART), 2579 (PART), 2583 (PART) AND 2584 (PART) IN D.D. 104 AND ADJOINING GOVERNMENT LAND, NGAU TAM MEI, YUEN LONG	LEGEND APPLICATION SITE SURVEYED TREE GVXX GENERAL VIEW	SCALE AS SHOWN	
		DRAWN BY KYU	DATE 28.10.2024
	DWG TITLE TREE SURVEY PLAN		

Appendix II –Tree Survey Schedule

Tree Survey Schedule

Location:

Lots 1213 RP, 1215 RP, 1216 RP, 1217 S.C RP (Part), 2579 (Part), 2583 (Part) and 2584 (Part) in D.D. 104 and Adjoining Government Land, Ngau Tam Mei, Yuen Long



Tree surveyor(s):

Mak Ka Hei

Field Survey was conducted on:

28 October 2024

Tree No.	Tree Species		Tree Size Measurements			Amenity Value	Form	Health Condition	Structural Condition	Suitability for Transplanting	Remarks
	Botanical Name	Chinese Name	Overall Height (m)	DBH (mm)	Average Crown Spread (m)	High /Med /Low	Good /Fair /Poor	Good /Fair /Poor /Dead	Good /Fair /Poor	High /Med /Low	
T1	<i>Acacia auriculiformis</i>	耳果相思(耳葉相思)	8.0	230	6.0	Low	Fair	Fair	Fair	Low	
T2	<i>Acacia auriculiformis</i>	耳果相思(耳葉相思)	8.0	130	5.0	Low	Fair	Fair	Fair	Low	
T3	<i>Acacia auriculiformis</i>	耳果相思(耳葉相思)	7.0	120	4.0	Low	Fair	Fair	Fair	Low	
T4	<i>Acacia auriculiformis</i>	耳果相思(耳葉相思)	7.0	120	4.0	Low	Poor	Fair	Poor	Low	uprooted
T5	<i>Acacia auriculiformis</i>	耳果相思(耳葉相思)	7.0	160	4.0	Low	Poor	Fair	Poor	Low	uprooted
T6	<i>Acacia auriculiformis</i>	耳果相思(耳葉相思)	6.0	110	4.0	Low	Fair	Fair	Fair	Low	
T7	<i>Acacia auriculiformis</i>	耳果相思(耳葉相思)	6.0	240	5.0	Low	Fair	Fair	Fair	Low	
T8	<i>Celtis sinensis</i>	朴樹	8.0	220	7.0	Low	Fair	Fair	Fair	Low	
T9	<i>Acacia auriculiformis</i>	耳果相思(耳葉相思)	7.0	393	9.0	Low	Poor	Fair	Poor	Low	collapsed, dead trunk, multi-trunks
T10	<i>Acacia auriculiformis</i>	耳果相思(耳葉相思)	7.5	110	5.0	Low	Fair	Fair	Fair	Low	
T11	<i>Acacia auriculiformis</i>	耳果相思(耳葉相思)	8.0	300	6.0	Low	Fair	Fair	Fair	Low	
T12	<i>Acacia auriculiformis</i>	耳果相思(耳葉相思)	7.0	100	5.0	Low	Fair	Fair	Fair	Low	
T13	<i>Macaranga tanarius var. tomentosa</i>	血桐	6.0	120	6.0	Low	Fair	Fair	Fair	Low	
T14	<i>Macaranga tanarius var. tomentosa</i>	血桐	7.0	120	6.0	Low	Fair	Fair	Fair	Low	
T15	<i>Citrus maxima</i>	柚	6.0	100	3.0	Low	Fair	Fair	Fair	Low	
T16	<i>Celtis sinensis</i>	朴樹	7.0	210	5.0	Low	Poor	Fair	Poor	Low	included bark
T17	<i>Macaranga tanarius var. tomentosa</i>	血桐	7.0	110	6.0	Low	Fair	Fair	Fair	Low	
T18	<i>Macaranga tanarius var. tomentosa</i>	血桐	8.0	149	7.0	Low	Fair	Fair	Fair	Low	
T19	<i>Celtis sinensis</i>	朴樹	7.0	280	8.0	Low	Poor	Poor	Poor	Low	cavity at trunk
T20	<i>Celtis sinensis</i>	朴樹	10.0	390	8.0	Low	Fair	Fair	Fair	Low	
T21	<i>Bischofia javanica</i>	秋楓	11.0	330	8.0	Low	Fair	Fair	Fair	Low	
T22	<i>Hibiscus tiliaceus</i>	黃槿	9.0	230	7.0	Low	Fair	Fair	Fair	Low	
T23	<i>Hibiscus tiliaceus</i>	黃槿	9.0	340	6.0	Low	Fair	Fair	Fair	Low	
T24	<i>Hibiscus tiliaceus</i>	黃槿	8.0	410	8.0	Low	Poor	Fair	Poor	Low	collapsed
T25	<i>Melia azedarach</i>	楝(苦楝)	11.0	330	9.0	Low	Fair	Fair	Fair	Low	
T26	<i>Leucaena leucocephala</i>	銀合歡	7.0	110	5.0	Low	Fair	Fair	Fair	Low	
T29	<i>Macaranga tanarius var. tomentosa</i>	血桐	7.0	110	5.0	Low	Fair	Fair	Fair	Low	
T31	<i>Macaranga tanarius var. tomentosa</i>	血桐	6.0	120	7.0	Low	Fair	Fair	Fair	Low	
T32	<i>Macaranga tanarius var. tomentosa</i>	血桐	6.0	220	6.0	Low	Fair	Fair	Fair	Low	
T33	<i>Celtis sinensis</i>	朴樹	10.0	470	9.0	Low	Fair	Fair	Fair	Low	
T34	<i>Macaranga tanarius var. tomentosa</i>	血桐	6.0	95	7.0	Low	Fair	Fair	Fair	Low	
T35	<i>Albizia lebbek</i>	大葉合歡	9.0	210	5.0	Low	Fair	Fair	Fair	Low	
T36	<i>Leucaena leucocephala</i>	銀合歡	8.0	100	4.0	Low	Fair	Fair	Fair	Low	
T38	<i>Leucaena leucocephala</i>	銀合歡	9.0	120	7.0	Low	Fair	Fair	Fair	Low	

Notes: Amenity Value, Form, Health Condition and Structural Condition of trees were obtained by Visual Assessment Only.

Appendix III – Photo Records

General View



General view 01



General view 02

General View



General view 03



General view 04

General View



General view 05



General view 06

General View



General view 07



General view 08

Photo Record



T1 (Overview)



T2 (Overview)



T3 (Overview)



T4 (Overview) (Uprooted)

Photo Record



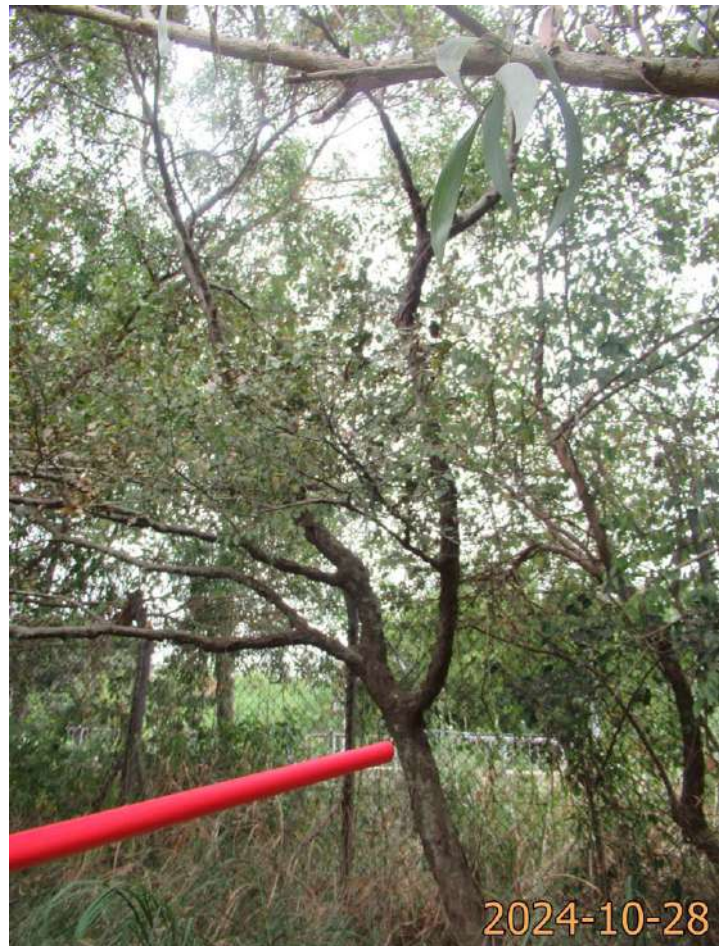
T5 (Overview) (Uprooted)



T6 (Overview)



T7 (Overview)



T8 (Overview)

Photo Record



T9 (Overview)



T9 Collapsed



T9 Dead trunk



T9 Multi-trunks

Photo Record



T10 (Overview)



T11 (Overview)



T12 (Overview)



T13 (Overview)

Photo Record



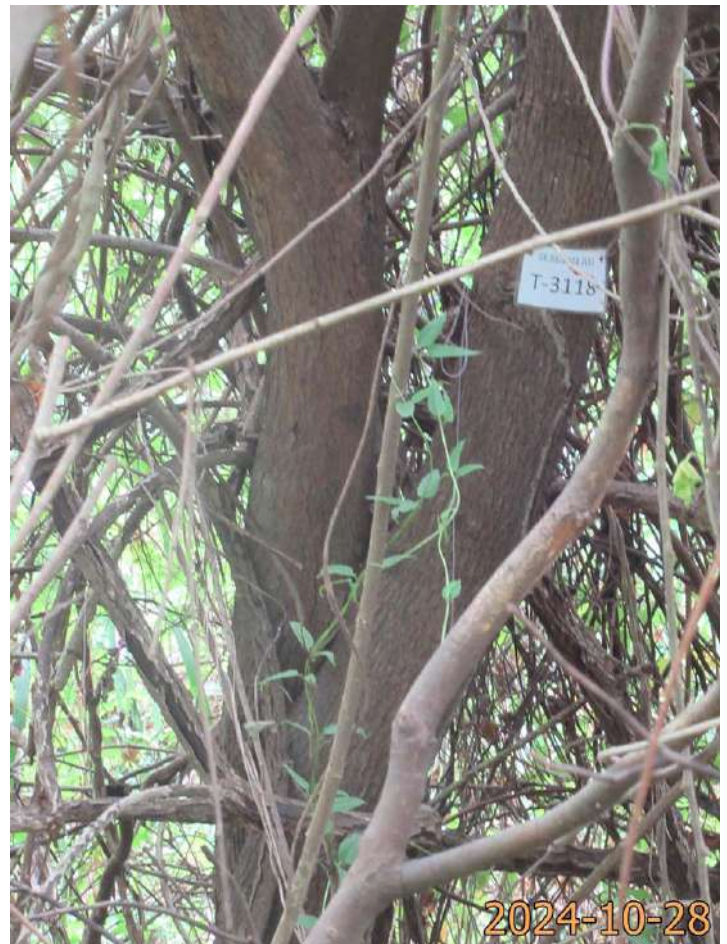
T14 (Overview)



T15 (Overview)



T16 (Overview)



T16 Included bark

Photo Record



T17 (Overview)



T18 (Overview)



T19 (Overview)



T19 Cavity at trunk

Photo Record



T20 (Overview)



T21 (Overview)



T22 (Overview)



T23 (Overview)

Photo Record



T24 (Overview)



T24 Collapsed



T25 (Overview)



T26 (Overview)

Photo Record



T29 (Overview)



T31 (Overview)



T32 (Overview)



T33 (Overview)

Photo Record



T34 (Overview)



T35 (Overview)



T36 (Overview)



T38 (Overview)