

**Legend:**

- • —** Application Site (Area: about 2,109 sq.m.)
- Temporary Structures
- Parking Spaces for Staff/Visitors (Private Vehicles) (2.5m x 5m) (4 nos.)

- Existing Trees to be Preserved (32 nos.)
- Collapsed Trees to be Removed (2 nos.)

Structure No.	Use	Area (m <sup>2</sup> )	Height (m)
1	Storeroom	15	2.5 (1-storey)
2	Site Office	15	2.5 (1-storey)
3	Portable Toilet (3 nos.)	7	2.5 (1-storey)

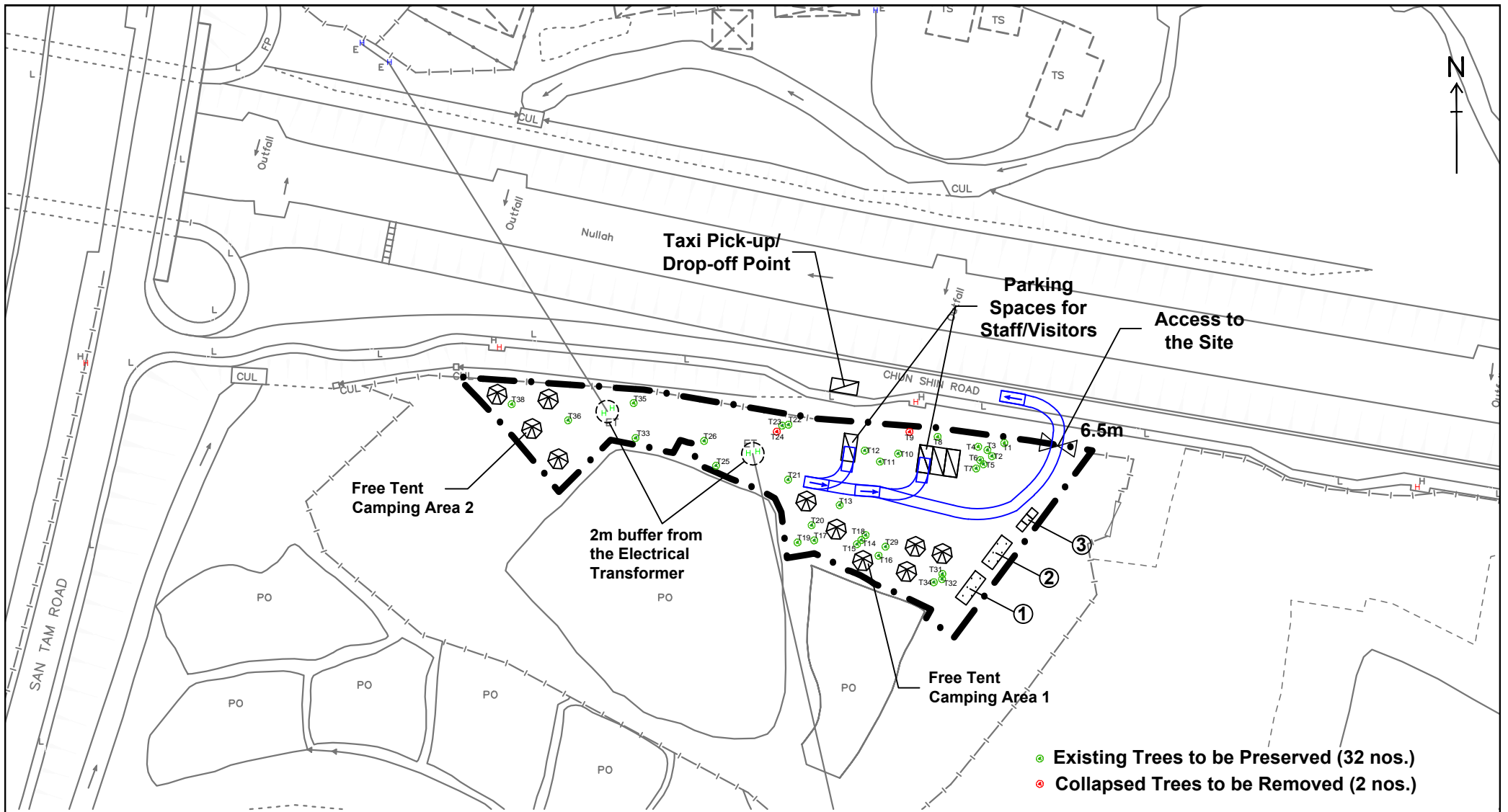
**Swept Path Analysis - In (for Private Vehicles)**

Figure 6A


Scale 1:1000





羅迅測計師行  
**Lawson David & Sung**  
 SURVEYORS LIMITED  
 Property Consultants • Planning • Valuers • Auctioneers  
 Estate Agency Licence No. C-906328



**Legend:**

- • —** Application Site (Area: about 2,109 sq.m.)
-  Temporary Structures
-  Parking Spaces for Staff/Visitors (Private Vehicles) (2.5m x 5m) (4 nos.)

-  Existing Trees to be Preserved (32 nos.)
-  Collapsed Trees to be Removed (2 nos.)

Structure No.	Use	Area (m <sup>2</sup> )	Height (m)
1	Storeroom	15	2.5 (1-storey)
2	Site Office	15	2.5 (1-storey)
3	Portable Toilet (3 nos.)	7	2.5 (1-storey)

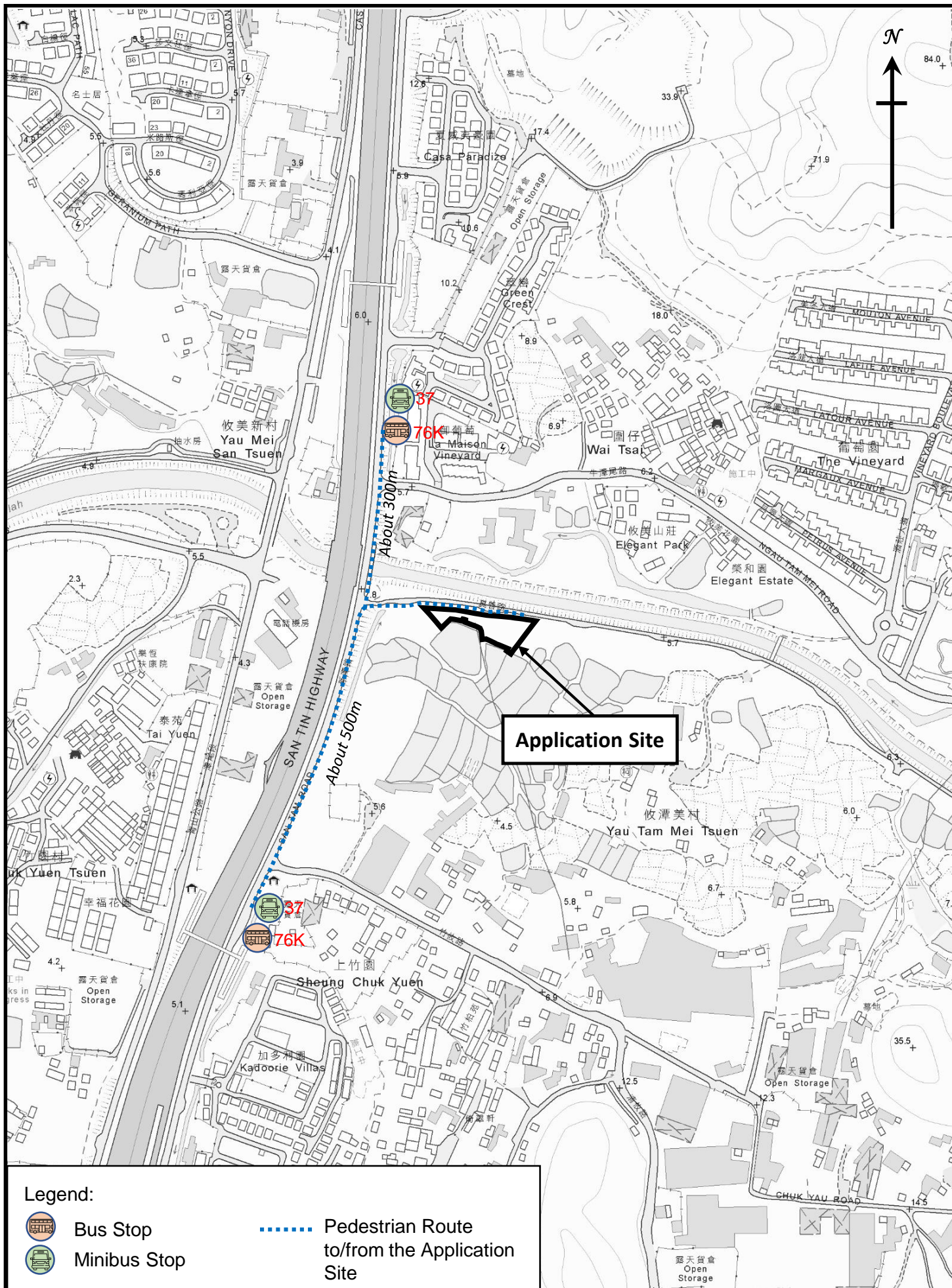
**Swept Path Analysis - Out (for Private Vehicles)**

Figure 6B

Scale 1:1000



羅迅測計師行  
**Lawson David & Sung**  
 SURVEYORS LIMITED  
 Property Consultants • Planning • Valuers • Auctioneers  
 Estate Agency Licence No. C-906328



**Application Site**

**Legend:**

-  Bus Stop
-  Minibus Stop
-  Pedestrian Route to/from the Application Site

Public Transport Facilities

Figure 7

1 : 5000



**羅迅測計師行**  
**Lawson David & Sung**

SURVEYORS LIMITED  
Property Consultants • Planning • Valuers • Auctioneers  
Estate Agency Licence No. C-006328

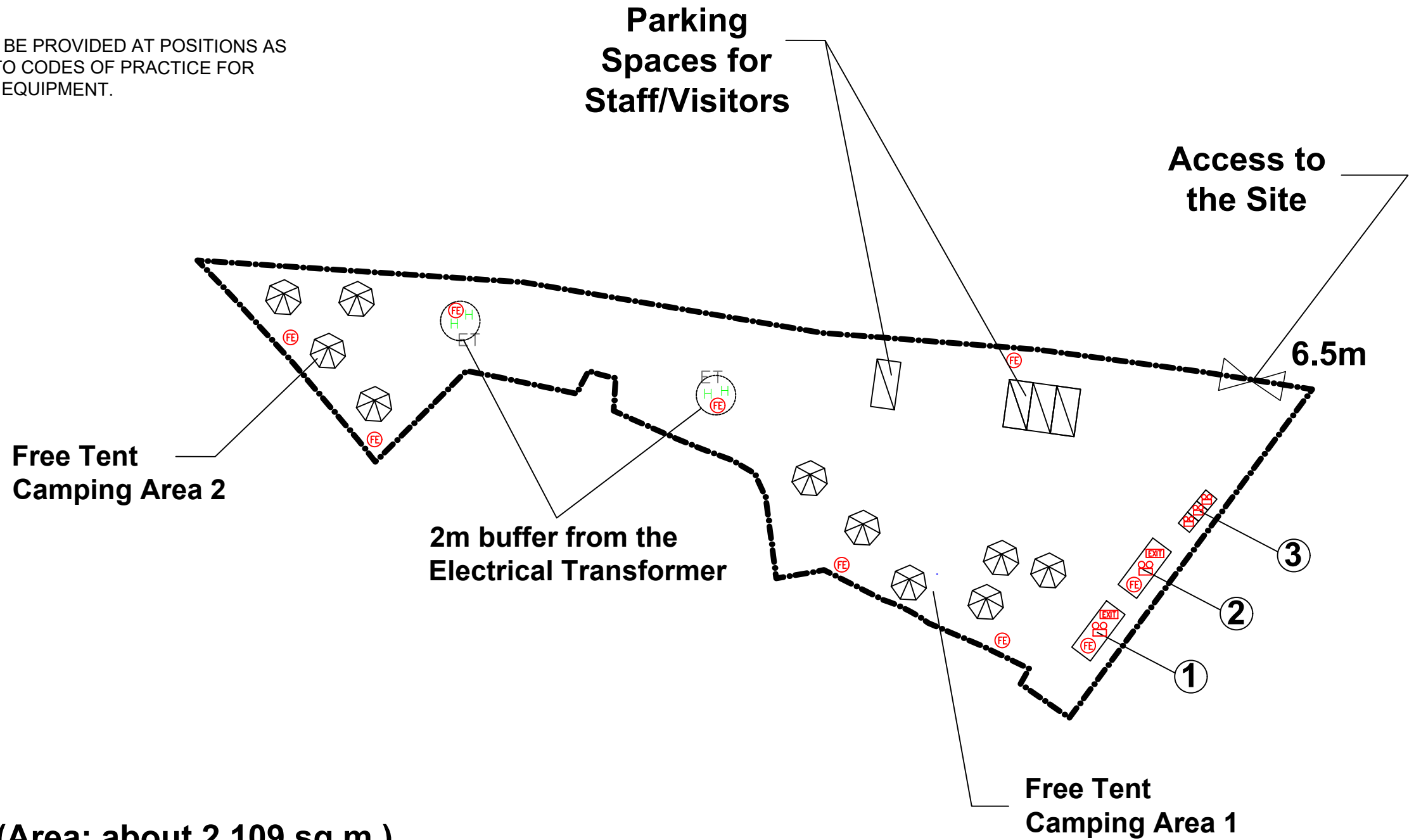
F.S. NOTES :

- 1 SUFFICIENT EMERGENCY LIGHTING SHALL BE PROVIDED THROUGHOUT THE ENTIRE BUILDING IN ACCORDANCE WITH BS 5266 - 1 : 2016, BS EN 1838 : 2013 AND THE FSD CIRCULAR LETTER NO. 4/2021.
- 2 SUFFICIENT ALL EXIT SIGNS/DIRECTIONAL EXIT SIGNS SHALL BE PROVIDED IN ACCORDANCE WITH BS 5266 - 1 : 2016 AND FSD CIRCULAR LETTER NO. 5/2008,
- 3 PORTABLE FIRE FIGHTING APPLIANCES SHALL BE PROVIDED AT POSITIONS AS INDICATED ON LAYOUT PLAN. IN ACCORDING TO CODES OF PRACTICE FOR MINIMUM FIRE SERVICES INSTALLATIONS AND EQUIPMENT.

Structure No.	Use	Area (m <sup>2</sup> )	Height (m)
1	Storeroom	15	2.5 (1-storey)
2	Site Office	15	2.5 (1-storey)
3	Portable Toilet (3 nos.)	7	2.5 (1-storey)

LEGEND

- 5KG CO2 FIRE EXTINGUISHER
- EMERGENCY LIGHT
- EXIT SIGN



Legend:

- Application Site (Area: about 2,109 sq.m.)
- Temporary Structures
- Parking Spaces for Staff/Visitors (Private Vehicles) (2.5m x 5m) (4 nos.)

PROJECT : Lots 1213 RP, 1215 RP, 1216 RP, 1217 S.C RP (Part), 2579 (Part), 2583 (Part) and 2584 (Part) in D.D. 104 and Adjoining Government Land, Ngau Tam Mei, Yuen Long, N.T.

DRAWING TITLE :  
**F.S. Notes, Legend,  
 Fire Service Installation  
 Layout Plan**

REV	DESCRIPTION	DATE

ARCHITECT :  
 CONSULTANT :

FIRE SERVICE CONTRACTOR :  
**Century Fire Service  
 Engineering Co., Ltd.**

DRAWN BY : C.K.NG  
 CHECKED BY :  
 APPROVED BY :

NAME : C.K.NG  
 DATE : 09 Dec 2024

DRAWING NO : **FS-01**  
 SCALE : 1:500 @ A3  
 SOURCE : B.O.O. Ref. BD  
 F.S.D. Ref. FP  
 REV. **0**