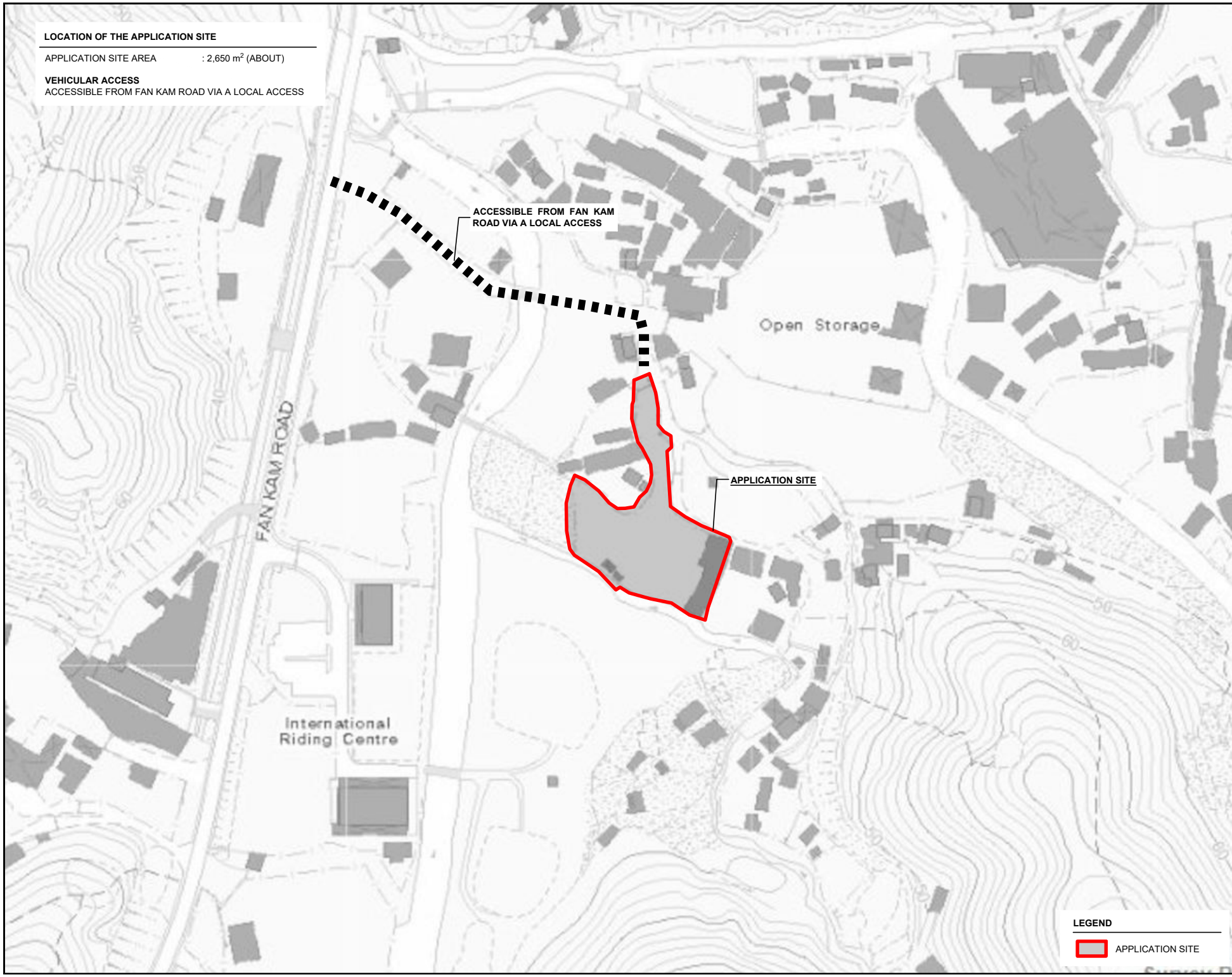
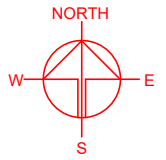


**LOCATION OF THE APPLICATION SITE**

APPLICATION SITE AREA : 2,650 m<sup>2</sup> (ABOUT)

**VEHICULAR ACCESS**

ACCESSIBLE FROM FAN KAM ROAD VIA A LOCAL ACCESS



ACCESSIBLE FROM FAN KAM ROAD VIA A LOCAL ACCESS

Open Storage

FAN KAM ROAD

International Riding Centre

APPLICATION SITE

**LEGEND**

 APPLICATION SITE

PLANNING CONSULTANT



PROJECT

TEMPORARY OPEN STORAGE OF CONSTRUCTION MATERIALS AND MACHINERIES WITH ANCILLARY FACILITIES FOR A PERIOD OF 3 YEARS AND ASSOCIATED FILLING OF LAND

SITE LOCATION

LOT 55 (PART) IN D.D. 108, PAT HEUNG, YUEN LONG, NEW TERRITORIES

SCALE

1 : 2000 @ A4

DRAWN BY	DATE
MN	15.9.2023
REVISED BY	DATE
APPROVED BY	DATE

DWG. TITLE  
LOCATION PLAN

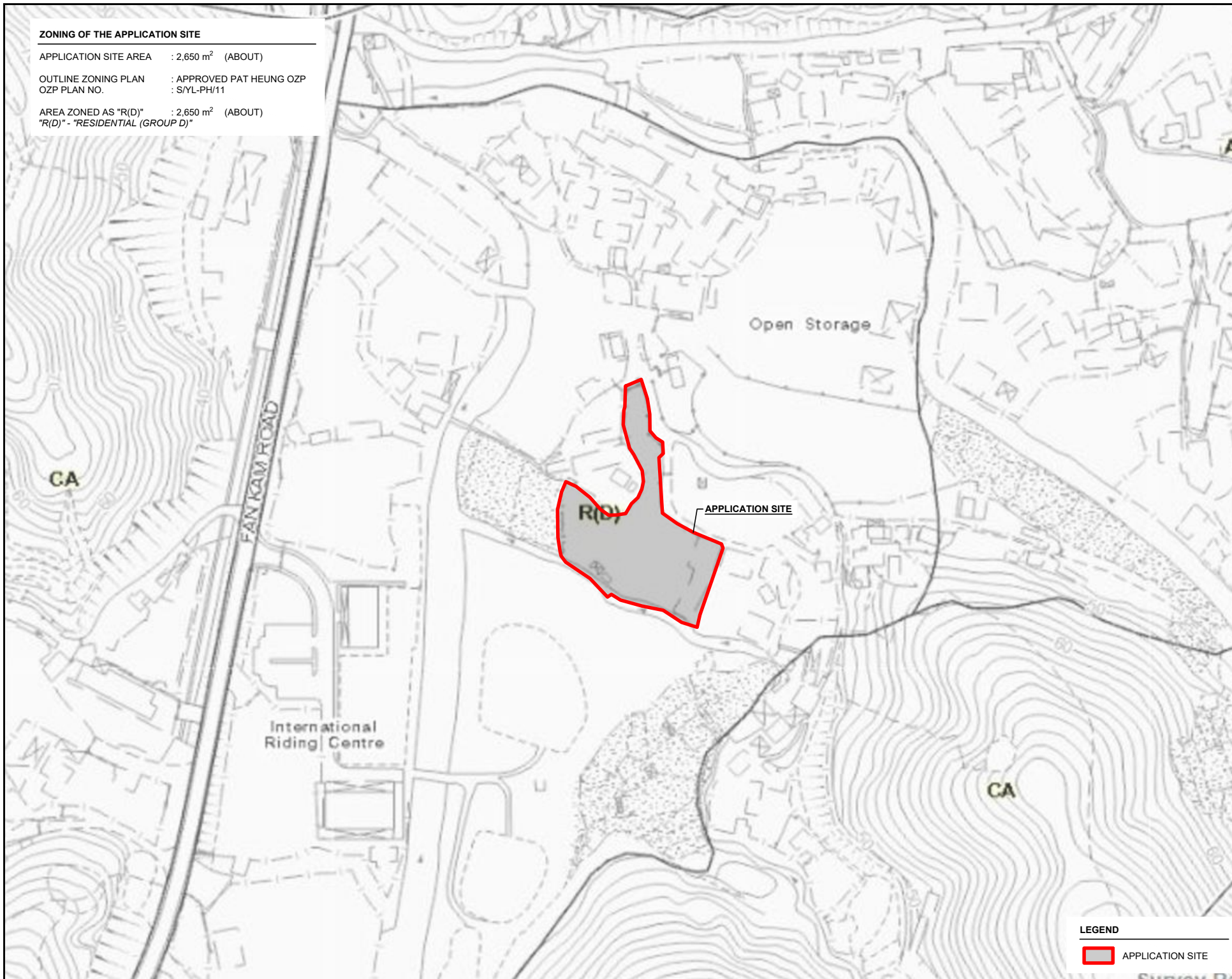
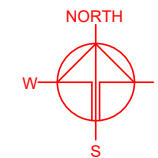
DWG. NO.	VER.
PLAN 1	001

**ZONING OF THE APPLICATION SITE**

APPLICATION SITE AREA : 2,650 m<sup>2</sup> (ABOUT)

OUTLINE ZONING PLAN : APPROVED PAT HEUNG OZP  
OZP PLAN NO. : S/YL-PH/11

AREA ZONED AS "R(D)" : 2,650 m<sup>2</sup> (ABOUT)  
"R(D)" - "RESIDENTIAL (GROUP D)"



PLANNING CONSULTANT  
**R-Riches**  
Property Consultants Ltd.

PROJECT  
TEMPORARY OPEN STORAGE OF CONSTRUCTION MATERIALS AND MACHINERIES WITH ANCILLARY FACILITIES FOR A PERIOD OF 3 YEARS AND ASSOCIATED FILLING OF LAND

SITE LOCATION  
LOT 55 (PART) IN D.D. 108, PAT HEUNG, YUEN LONG, NEW TERRITORIES

SCALE  
1 : 2000 @ A4

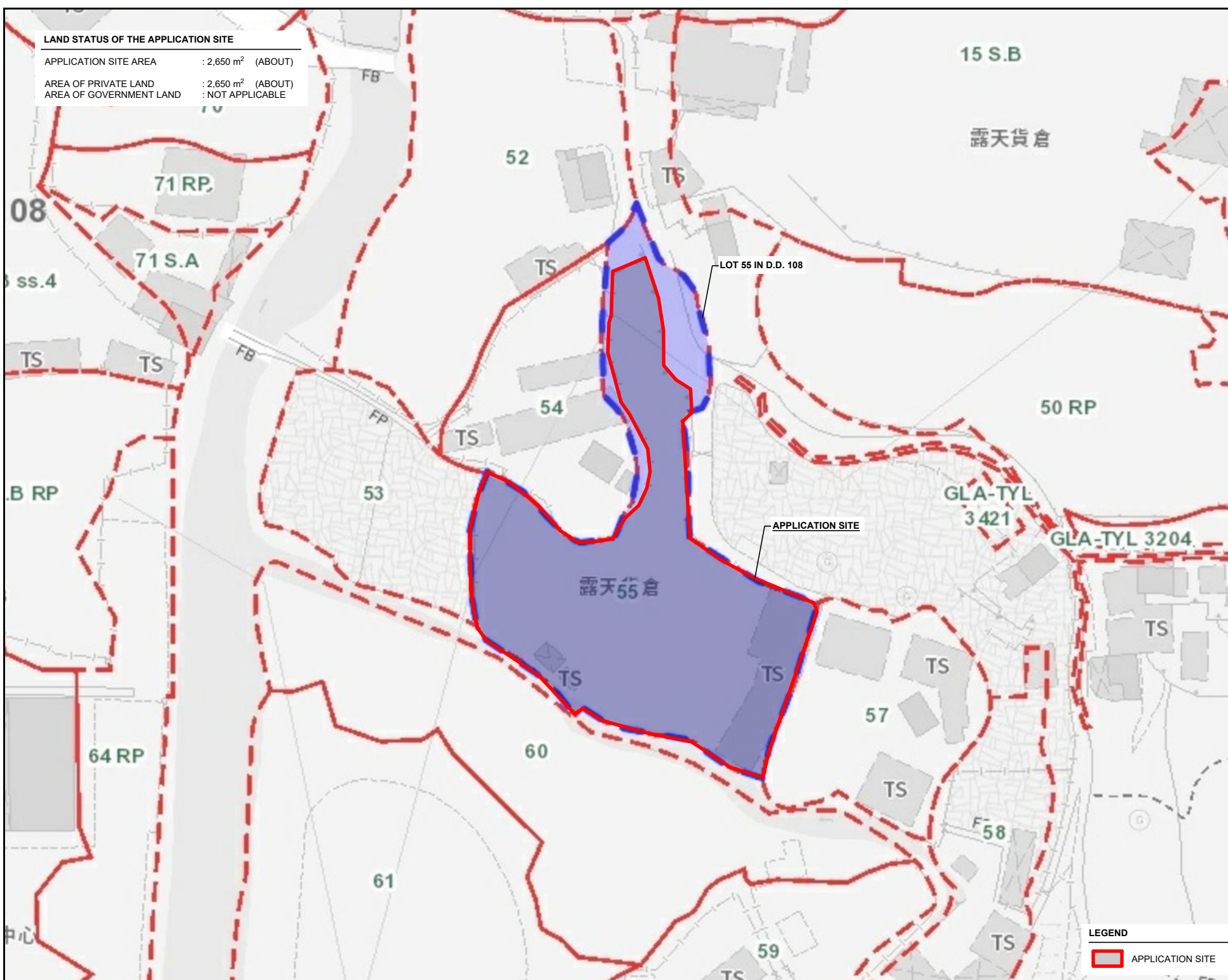
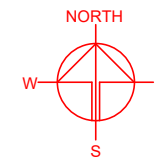
DRAWN BY	DATE
MN	15.9.2023
REVISED BY	DATE
APPROVED BY	DATE

DWG. TITLE ZONING OF THE SITE	
DWG. NO. PLAN 2	VER. 001

**LEGEND**  
[Red outline box] APPLICATION SITE

**LAND STATUS OF THE APPLICATION SITE**

APPLICATION SITE AREA : 2,650 m<sup>2</sup> (ABOUT)  
 AREA OF PRIVATE LAND : 2,650 m<sup>2</sup> (ABOUT)  
 AREA OF GOVERNMENT LAND : NOT APPLICABLE



**LEGEND**  
 APPLICATION SITE

PLANNING CONSULTANT  
**R-Riches**  
 Property Consultants Ltd.

PROJECT  
 TEMPORARY OPEN STORAGE OF CONSTRUCTION MATERIALS AND MACHINERIES WITH ANCILLARY FACILITIES FOR A PERIOD OF 3 YEARS AND ASSOCIATED FILLING OF LAND

SITE LOCATION  
 LOT 55 (PART) IN D.D. 108, PAT HEUNG, YUEN LONG, NEW TERRITORIES

SCALE  
 1 : 1000 @ A4

DRAWN BY	DATE
MN	15.9.2023
REVISED BY	DATE
APPROVED BY	DATE

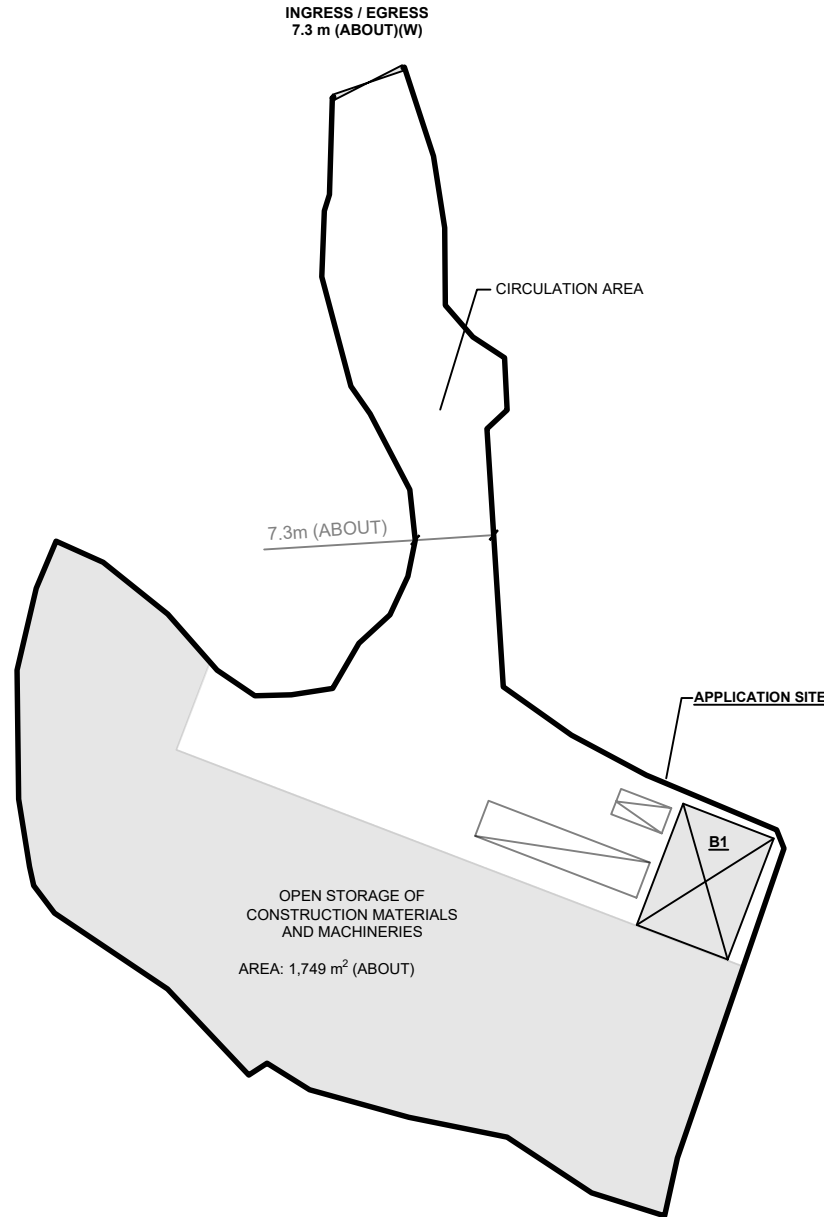
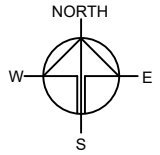
DWG. TITLE  
 LAND STATUS OF THE SITE

DWG. NO.	VER.
PLAN 3	001

**DEVELOPMENT PARAMETERS**

APPLICATION SITE AREA	: 2,650 m <sup>2</sup>	(ABOUT)
COVERED AREA	: 108 m <sup>2</sup>	(ABOUT)
UNCOVERED AREA	: 2,542 m <sup>2</sup>	(ABOUT)
PLOT RATIO	: 0.08	(ABOUT)
SITE COVERAGE	: 4%	(ABOUT)
NO. OF STRUCTURE	: 1	
DOMESTIC GFA	: N/A	
NON-DOMESTIC GFA	: 216 m <sup>2</sup>	(ABOUT)
BUILDING HEIGHT	: 7 m	(ABOUT)
NO. OF STOREY	: 2	

STRUCTURE	USE	COVERED AREA	GFA	BUILDING HEIGHT
B1	SITE OFFICE WASHROOM METER ROOM	108m <sup>2</sup> (ABOUT)	216m <sup>2</sup> (ABOUT)	7m (ABOUT)(2-STOREY)
<b>TOTAL</b>		<b>108m<sup>2</sup> (ABOUT)</b>	<b>216m<sup>2</sup> (ABOUT)</b>	



**PARKING AND LOADING / UNLOADING PROVISIONS**

NO. OF PRIVATE CAR PARKING SPACE	: 1
DIMENSION OF PARKING SPACE	: 5 m (L) x 2.5 m (W)
NO. OF L/UL SPACE FOR CONTAIN VEHICLE	: 1
DIMENSION OF L/UL SPACE	: 16 m (L) x 3.5 m (W)

**LEGEND**

- APPLICATION SITE
- STRUCTURE
- PARKING SPACE
- LOADING / UNLOADING SPACE
- INGRESS / EGRESS

PLANNING CONSULTANT



PROJECT

PROPOSED TEMPORARY OPEN STORAGE OF CONSTRUCTION MATERIALS AND MACHINERIES WITH ANCILLARY FACILITIES FOR A PERIOD OF 3 YEARS AND ASSOCIATED FILLING OF LAND

SITE LOCATION

LOT 55 (PART) IN D.D. 108, PAT HEUNG, YUEN LONG, NEW TERRITORIES

SCALE

1 : 700 @ A4

DRAWN BY	DATE
MN	15.9.2023

REVISED BY	DATE

APPROVED BY	DATE

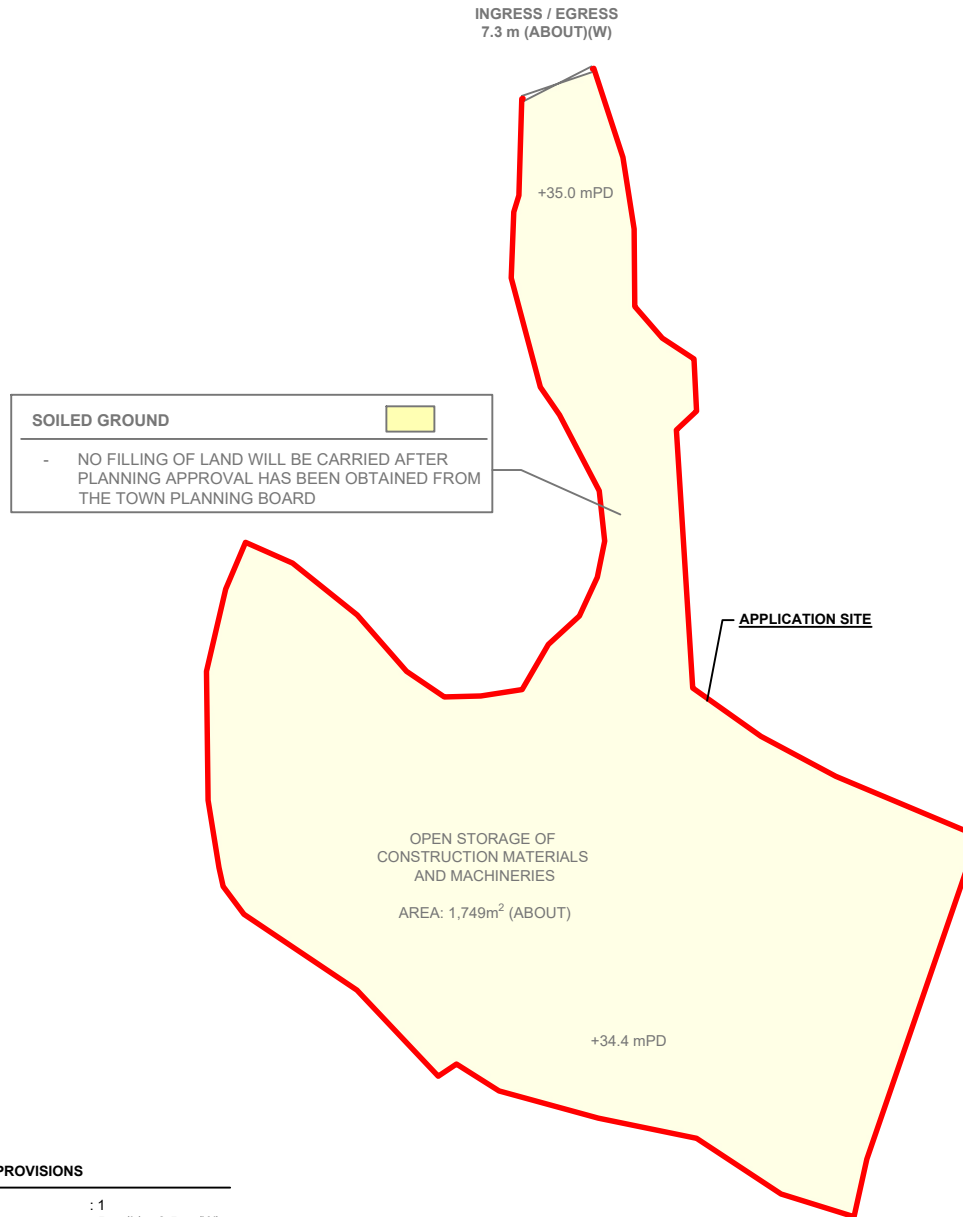
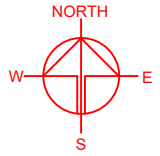
DWG. TITLE  
LAYOUT PLAN

DWG NO.	VER.
PLAN 4	001

**EXISTING CONDITION OF THE APPLICATION SITE**

APPLICATION SITE AREA : 2,650 m<sup>2</sup> (ABOUT)  
 GROUND SURFACE : SOILED GROUND

STRUCTURE	USE	COVERED AREA	GFA	BUILDING HEIGHT
B1	SITE OFFICE WASHROOM METER ROOM	108m <sup>2</sup> (ABOUT)	216m <sup>2</sup> (ABOUT)	7m (ABOUT)(2-STOREY)
<b>TOTAL</b>		<b>108m<sup>2</sup> (ABOUT)</b>	<b>216m<sup>2</sup> (ABOUT)</b>	



**SOILED GROUND**

- NO FILLING OF LAND WILL BE CARRIED AFTER PLANNING APPROVAL HAS BEEN OBTAINED FROM THE TOWN PLANNING BOARD

**PARKING AND LOADING / UNLOADING PROVISIONS**

NO. OF PRIVATE CAR PARKING SPACE : 1  
 DIMENSION OF PARKING SPACE : 5 m (L) x 2.5 m (W)

NO. OF L/UL SPACE FOR CONTAINER : 1  
 DIMENSION OF L/UL SPACE : 16 m (L) x 3.5 m (W)

**LEGEND**

	APPLICATION SITE
	INGRESS / EGRESS

PLANNING CONSULTANT

PROJECT

TEMPORARY OPEN STORAGE OF CONSTRUCTION MATERIALS AND MACHINERIES WITH ANCILLARY FACILITIES FOR A PERIOD OF 3 YEARS AND ASSOCIATED FILLING OF LAND

SITE LOCATION

LOT 55 (PART) IN D.D. 108, PAT HEUNG, YUEN LONG, NEW TERRITORIES

SCALE  
1 : 700 @ A4

DRAWN BY	DATE
OL	15.6.2023
REVISED BY	DATE
LT	11.10.2023
APPROVED BY	DATE

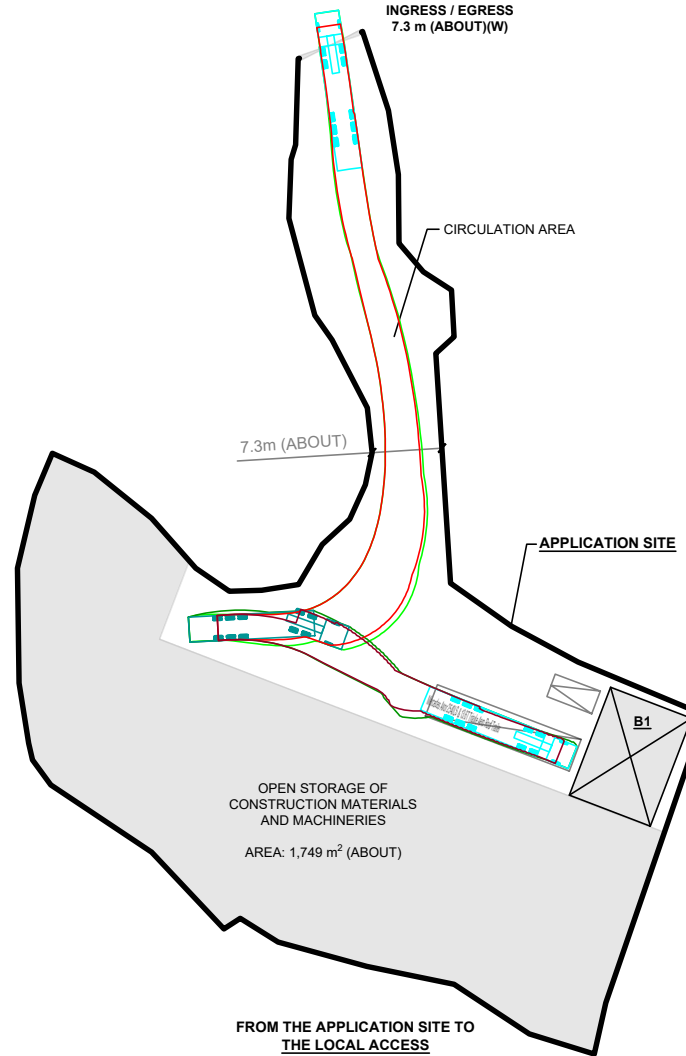
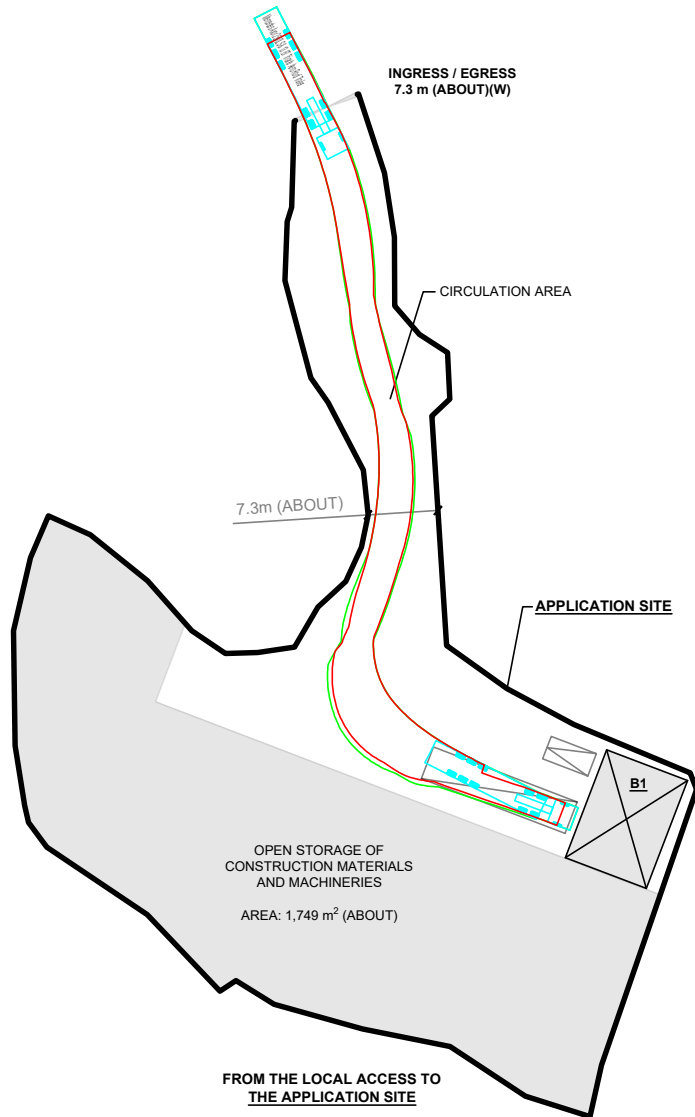
DWG. TITLE  
FILLING OF LAND

DWG. NO. PLAN 5	VER. 001
--------------------	-------------

**SWEPT PATH ANALYSIS**

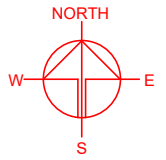
TYPE OF VEHICLE : CONTAINER VEHICLE  
 DIMENSION OF VEHICLE : 2.5 m (W) X 16 m (L)

SWEPT PATHS GENERATED BY AUTODESK VEHICLE TRACKING



**LEGEND**

- APPLICATION SITE
- PARKING SPACE
- LOADING / UNLOADING SPACE
- CONTAINER VEHICLE
- SWEEP PATH OF VEHICLE



PLANNING CONSULTANT



PROJECT

TEMPORARY OPEN STORAGE OF CONSTRUCTION MATERIALS AND MACHINERIES WITH ANCILLARY FACILITIES FOR A PERIOD OF 3 YEARS AND ASSOCIATED FILLING OF LAND

SITE LOCATION

LOT 55 (PART) IN D.D. 108, PAT HEUNG, YUEN LONG, NEW TERRITORIES

SCALE

1 : 800 @ A4

DRAWN BY	DATE
MN	15.9.2023
CHECKED BY	DATE
APPROVED BY	DATE

DWG. TITLE

SWEPT PATH ANALYSIS

DWG NO.	VER.
PLAN 6	001