

Our Ref : YL/TPN/2338C/L04

16 December 2024

Secretary
Town Planning Board
15/F, North Point Government Offices
333 Java Road, North Point
Hong Kong

By Post and Email

Dear Sir/Madam,

**Planning Application for
A “Temporary Shop and Services”
for a Period of Three Years
Lots 336D, 336H and 336RP(Part) in D.D. 111
Pat Heung, Yuen Long, New Territories
(Planning Application No. A/YL-PH/1032)**

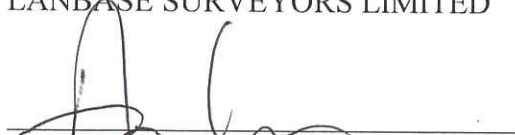
We refer to the captioned planning application.

We act on behalf of the Applicant to submit herewith a set of “Response-to-Comments” and a revised fire service installations proposal in response to the Fire Services Department’s comments for re-activating the captioned planning application.

We should be grateful if you could make decision on the captioned planning application at the earliest meeting date upon receipt of this further information.

Should you have any queries, please feel free to call our [REDACTED].
Thank you for your kind attention.

Yours faithfully,
For and on behalf of
LANBASE SURVEYORS LIMITED


Anson Lee

Encl.
RK/AL

c.c.
DPO/FS&YLE [REDACTED]

Response-to-Comments

	Departmental Comments	Responses
	Fire Services Department (FSD) (Contact: Mr YUEN Tsz-fung at 2733-7781)	
	Based on the submitted FSI proposal, I have the following comments:	
(i)	The standards and specification of the proposed emergency lighting shall be revised to 'BS 5266-1:2016, BS EN 1838:2013 and the FSD Circular Letter No. 4/2021'.	Noted. Please refer to the revised FSI proposal.
(ii)	The standards and specification of the proposed directional and exit signs shall be revised to 'BS 5266-1:2016 and the FSD Circular Letter No. 5/2008'.	Noted. Please refer to the revised FSI proposal.
(iii)	Fire extinguishers shall be provided to every level of the Structure.	Noted. Please refer to the revised FSI proposal.

FS NOTES

1. EMERGENCY LIGHTING AND EXIT SIGN

- i) EMERGENCY LIGHTING SHALL BE PROVIDED IN ACCORDANCE WITH BS5266-1:2016, BSEN1838:2013 AND THE FSD CIRCULAR LETTER NO. 4/2021. THE EXIT SIGNS SHALL BE PROVIDED IN ACCORDANCE WITH BS5266-1:2016 AND FSD CIRCULAR LETTERS 5/2008.
- ii) EMERGENCY LIGHTING AND EXIT SIGNS SHALL BE BACKED UP BY BATTERY ONLY.
- iii) EMERGENCY LIGHTING AND EXIT SIGNS SHALL BE PROVIDED AS SHOWN ON PLAN.
2. PORTABLE FIRE EXTINGUISHER APPLIANCES SHALL BE PROVIDED AT POSITION AS INDICATED ON LAYOUT PLAN IN ACCORDING TO CODES OF PRACTICES FOR MINIMUM FIRE SERVICES INSTALLATION AND EQUIPMENT

LEGEND

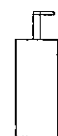
5KG CO2 TYPE FIRE EXTINGUISHER



EXIT SIGN C/W 2 HOURS DURATION BATTERY



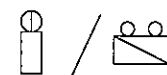
EMERGENCY LIGHTING C/W 2 HOURS DURATION BATTERY



5KG CO2 TYPE FIRE EXTINGUISHER (SECTION)



EXIT SIGN C/W 2 HOURS DURATION BATTERY (SECTION)



EMERGENCY LIGHTING C/W 2 HOURS DURATION BATTERY (SECTION)

REV	DATE	BY	APP	DESCRIPTION
C	DEC-24	LW	YT	3rd SUBMISSION
B	SEP-20	LW	YT	2nd SUBMISSION
A	MAR-20	LW	YT	1st SUBMISSION

CLIENT :

POWER HONG KONG LIMITED

FS CONTRACTOR

金錫消防工程有限公司
KAM TIN FIRE ENGINEERING COMPANY LTD.

PROJECT

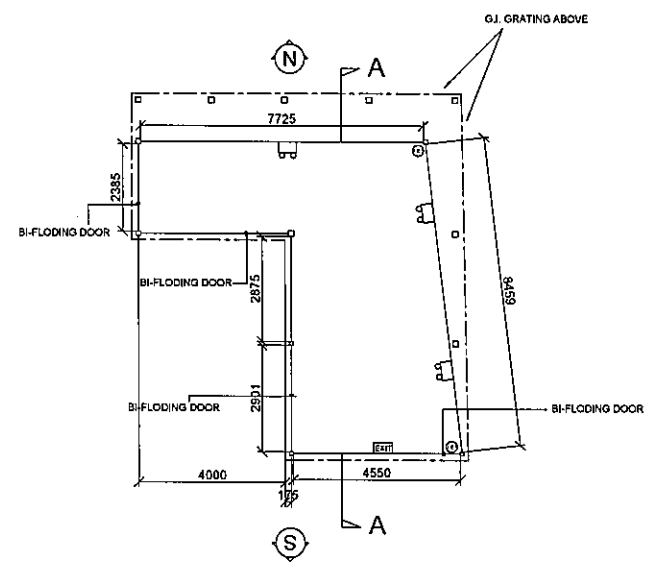
PROPOSED TEMPORARY SHOP AND SERVICES FOR A PERIOD OF 3 YEARS IN "VILLAGE TYPE DEVELOPMENT" ZONE, LOTS 336D, 336H AND 336 RP (PART) IN D.D. 111, PAT HEUNG, YUEN LONG, NEW TERRITORIES

STATUS

DRAWING TITLE

FS NOTES AND LEGENDS

DRAWN LW	CHECKED WT	APPROVED YT
SCALE N.T.S	DATE DEC-24	
JOB NO.	DWG NO. PH-FS-W-001	REV C



REV	DATE	BY	APP	DESCRIPTION
C	DEC-24	LW	YT	3rd SUBMISSION
B	SEP-20	LW	YT	2nd SUBMISSION
A	MAR-20	LW	YT	1st SUBMISSION

CLIENT :
POWER HONG KONG LIMITED

FS CONTRACTOR
 金錫消防工程有限公司
 KAM TIN FIRE ENGINEERING COMPANY LTD.

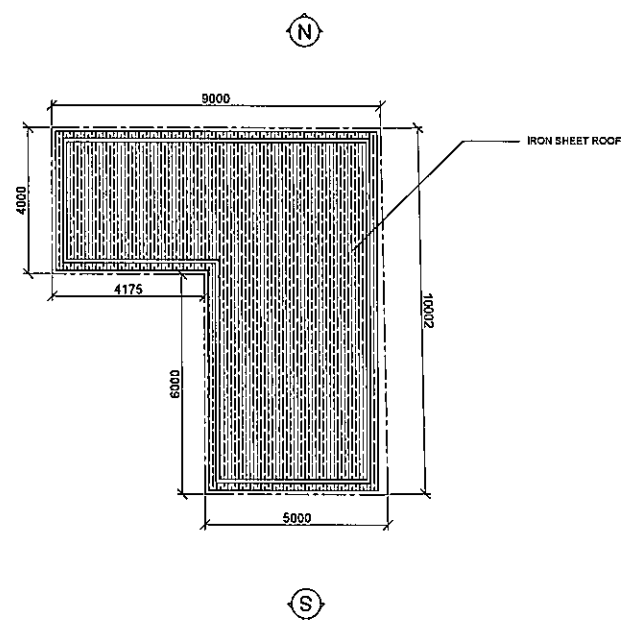
PROJECT
 PROPOSED TEMPORARY SHOP AND SERVICES FOR A PERIOD OF 3 YEARS IN "VILLAGE TYPE DEVELOPMENT" ZONE, LOTS 336D, 336H AND 336 RP (PART) IN D.D. 111, PAT HEUNG, YUEN LONG, NEW TERRITORIES

STATUS

DRAWING TITLE
**FIRE SERVICES LAYOUT AT
 GROUND FLOOR**

DRAWN LW	CHECKED WT	APPROVED YT
SCALE A1 (1:100)	DATE DEC-24	REV C
JOB NO.	DWG NO. PH-FS-W-002	REV C

LD REF. : A/YL-PH/1032



REV	DATE	BY	APP	DESCRIPTION
C	DEC-24	LW	YT	3rd SUBMISSION
B	SEP-20	LW	YT	2nd SUBMISSION
A	MAR-20	LW	YT	1st SUBMISSION

CLIENT:
POWER HONG KONG LIMITED

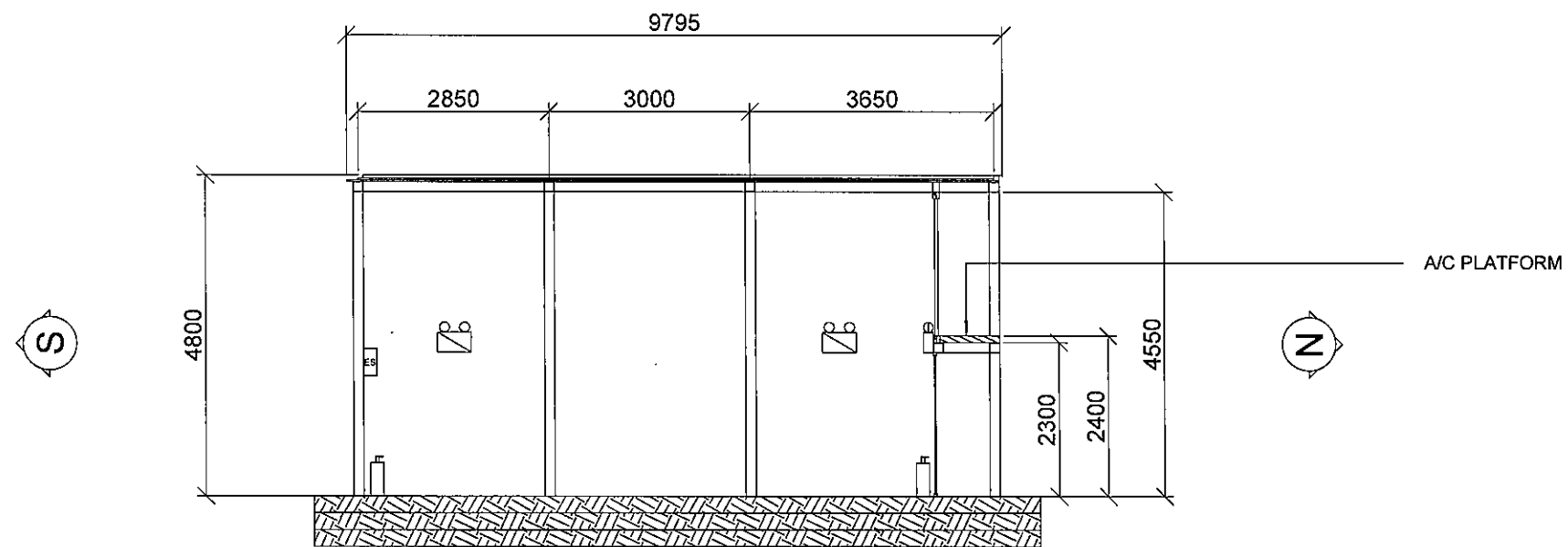
FS CONTRACTOR
 金錫消防工程有限公司
 KAM TIN FIRE ENGINEERING COMPANY LTD.

PROJECT
 PROPOSED TEMPORARY SHOP AND SERVICES FOR A PERIOD OF 3 YEARS IN "VILLAGE TYPE DEVELOPMENT" ZONE, LOTS 336D, 336H AND 336 RP (PART) IN D.D. 111, PAT HEUNG, YUEN LONG, NEW TERRITORIES

STATUS

DRAWING TITLE
FIRE SERVICES LAYOUT AT ROOF FLOOR

DRAWN LW	CHECKED WT	APPROVED YT
SCALE A1 (1:100)	DATE DEC-24	REV C
JOB NO.	DWG NO. PH-FS-W-004	



SECTION A - A

REV	DATE	BY	APP	DESCRIPTION
A	DEC-24	LW	YT	2nd SUBMISSION
A	SEP-20	LW	YT	1st SUBMISSION

CLIENT:
POWER HONG KONG LIMITED

FS CONTRACTOR
 金錫消防工程有限公司
 KAM TIN FIRE ENGINEERING COMPANY LTD.

PROJECT
 PROPOSED TEMPORARY SHOP AND SERVICES FOR A PERIOD OF 3 YEARS IN "VILLAGE TYPE DEVELOPMENT" ZONE, LOTS 336D, 336H AND 336 HP (PART) IN D.D. 111, PAT HEUNG, YUEN LONG, NEW TERRITORIES

STATUS

DRAWING TITLE
**FIRE SERVICES LAYOUT
 (SECTION A - A)**

DRAWN LW	CHECKED WT	APPROVED YT
SCALE A1 (1:50)	DATE DEC-24	REV A
JOB NO.	DWG NO. PH-FS-W-005	REV A