

舊有批准消防報告

Our Ref: 038/22/HC/hc
Your Ref: A/YL-PH/906

Date: 31st August, 2022

Town Planning Board
15/F, North Point Government Offices,
333, Java Road, North Point,
Hong Kong.

Dear Sir/ Madam,

**Proposed Temporary Warehouse for Storage of Hydroelectric
Engineering Construction Material for a Period of 3 Years
Lot 644 in D.D. 111, Pat Heung, Yuen Long
FSI Proposal Submission**

In reply to FSD comments, on behalf of the applicant, we re-submit herewith the FSI Proposal Report, one set with five copies, for your comment and approval.

In this amendment, we have divided the proposed temporary structures in to three units. Each unit is less than 230 m², as to meet the requirements of FSD.

Thank you for your attention.

Yours faithfully,




.....

Encl.

Fire Service Assessment Report for a Proposed Temporary Warehouse
for Storage of Hydroelectric Engineering Construction Material for
a Period of 3 Years

Lot 644 in D.D. 111, Pat Heung, Yuen Long

31st August, 2022

	Name	Signature
Prepared and Checked by	H C Cho (RPE Civil)	

Version: -	Date: August, 2022
<p>The information contained in this report is, to the best of our knowledge, correct at the time of printing. The interpretation and recommendations in the report are based on our experience, using reasonable professional skill and judgment, and based upon the information that was available to us. These interpretations and recommendations are not necessarily relevant to any aspect outside the restricted requirements of our brief. This report has been prepared for the sole and specific use of our client.</p>	

Fire Service Assessment Report for a Proposed Temporary Warehouse
for Storage of Hydroelectric Engineering Construction Material for
a Period of 3 Years
Lot 644 in D.D. 111, Pat Heung, Yuen Long

The Proposed Temporary Warehouse site for Storage of Hydroelectric Engineering Construction Material area as measured is about 1,340 square meters. It provides two groups of structures. One group consists with three Proposed Temporary Structures for sale of building materials area as measured are: (warehouse 1=204m²), (warehouse 2=220m²) and (warehouse 3=221m²). Another group consist with a 20 feet office container. There is a spacious paved ground with no blockage to any fire service vehicles in approaching to each of the metal covered structures. It also provides a place for loading and unloading at the side of the paved driveway. The operation hours for the temporary warehouse will be between 8:00 a.m. and 6:00 p.m. Mondays to Saturdays, not including Sundays and public holidays. This is buildings with no residents staying in.

The Site can be accessed via a local track branching off from Wang Toi Shan, Shan Tsuen Road. The internal haul road within the site is about 7.5 meters in width.

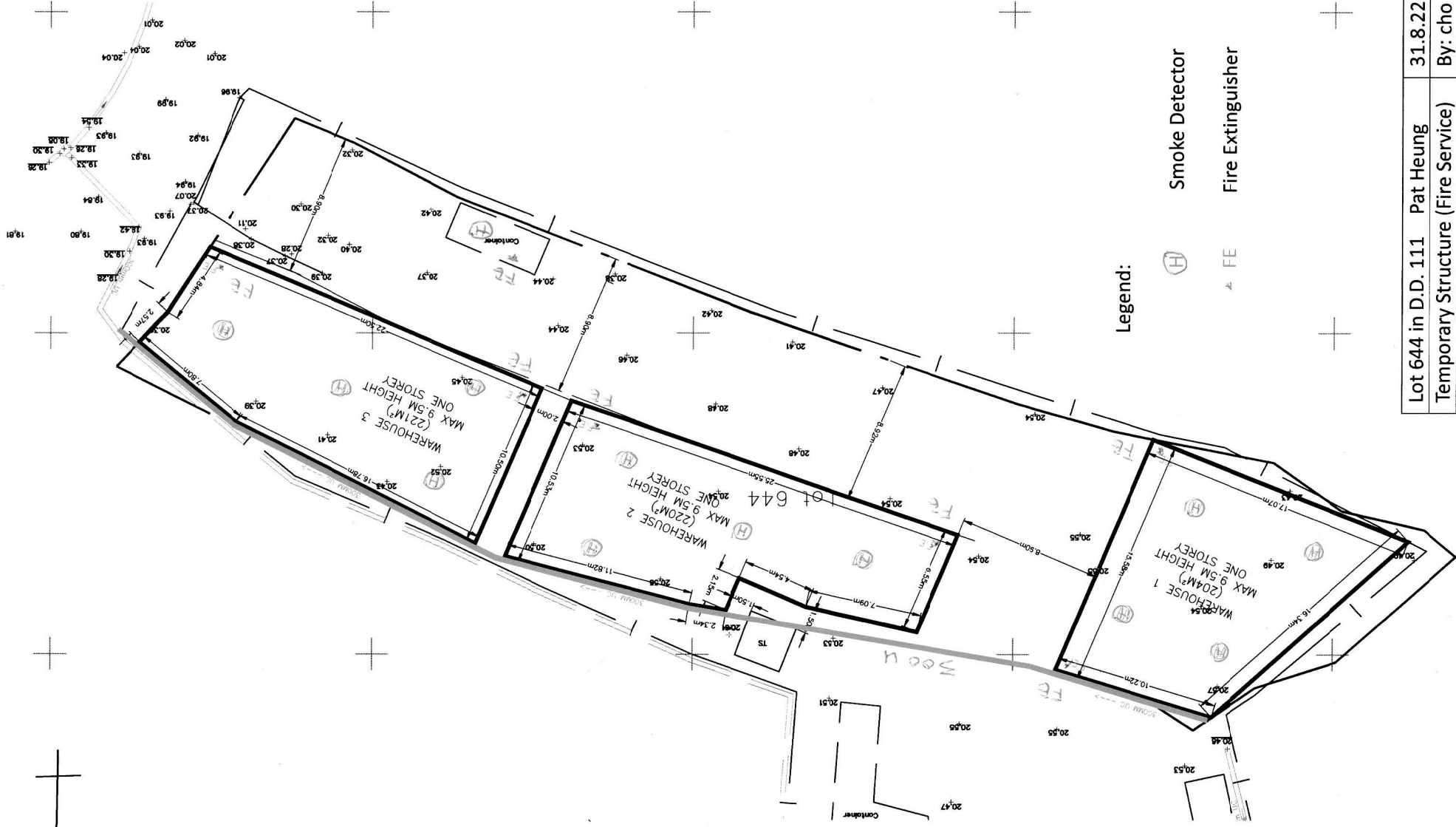
At any turning point of the haul road, the internal radius is 6.0 meters and external turning radius is 10.0 meters. It is enough for any large vehicles and fire ambulance vehicles in reaching any point of the site.

The driving distance from Pat Heung Fire Service Station to the site is 2.0 km. In case of fire, fire ambulance vehicles could reach the site within 5.0 minutes.

For the temporary metal covered warehouse structures, four smoke detectors and two valid fire extinguishers will be provided for each warehouse. For the container there is one valid fire extinguisher and a smoke detector at ceiling. Location is as indicated in drawing no.01.

N

Appendix I



Legend:

- (H) Smoke Detector
- ▲ FE Fire Extinguisher

Lot 644 in D.D. 111	Pat Heung	31.8.22	Draw-01
Temporary Structure (Fire Service)	By: cho		Rev-01

NCF PORTABLE FIRE EXTINGUISHER

CO₂ GAS

Capacity: 2kg 5kg

'NCF' brand carbon dioxide (CO₂) fire extinguishers provide trusted fire protection without contamination risk. A powerful concentration of carbon dioxide gas is delivered onto fires involving flammable liquids and electrical hazards. It not only smothers fires quickly and cleanly but also is non-toxic and harmless to delicate mechanism and materials. Therefore, it is ideally suited for use in laboratories, paint spray booths, switch-gear transformers, diesel locomotives, aircraft, ships and for protecting all kinds of process using oils, spirits, solvents, wax and other highly flammable materials.

FEATURES

- Seize and Squeeze operation and controllable discharge
- Fire ratings 30% higher than the normal (at least)
- Non-conductive anti-static horns
- Corrosion-resistant cylinder
- Stainless steel levers, chrome plated valves to gain long service life
- Tested to BSEN3:1996



SPECIFICATION

Model No.	CDE-2	CDE-5
Nominal Capacity (kg)	2.0	5.0
Rating	34B	70B
Discharge Time (sec)	8.0	16.0
Range (M)	4.5	4.5
Working Pressure (MPa)	5.6	5.6
Test Pressure (MPa)	25	25
Overall Height (mm)	450	570
Overall Width (mm)	160	200

亨利公司

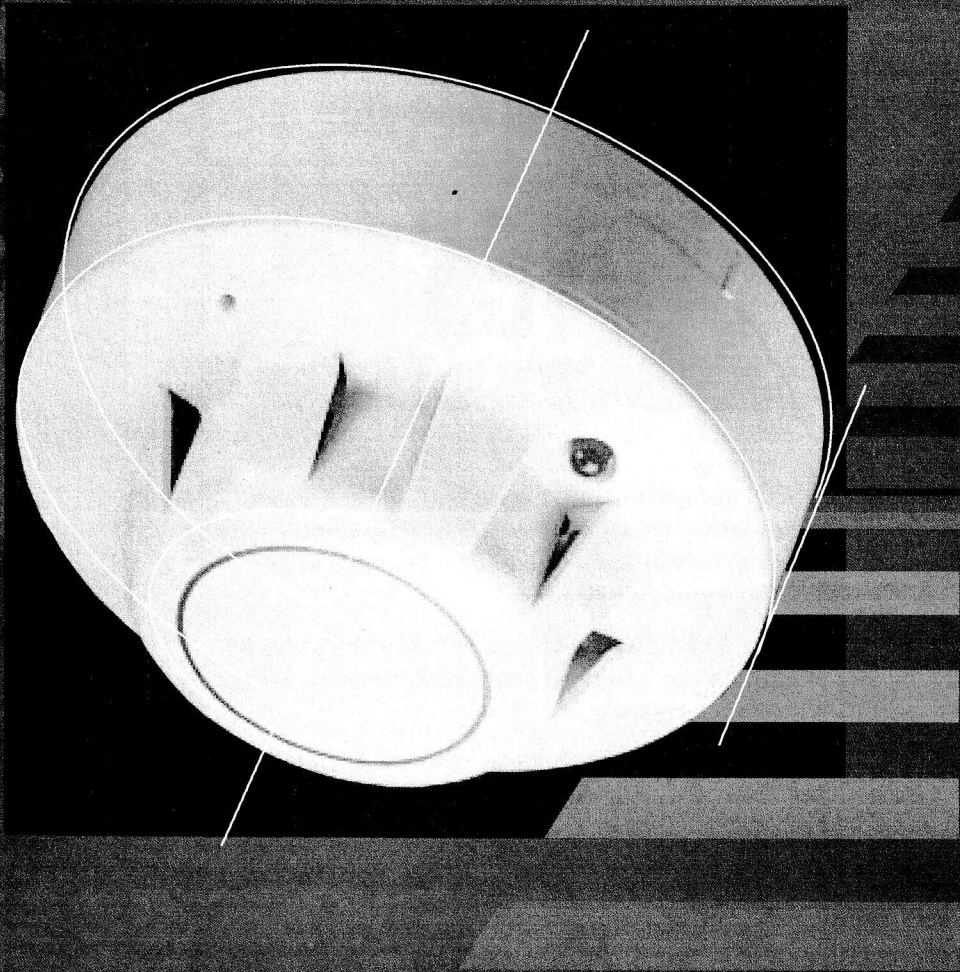
HENRY ENGINEERING & SUPPLIES
 O/B GOOD STRIDE LIMITED
 香港九龍新填地街287-289號昌泰商業大廈三層樓
 3/F., Cheong Tai Commercial Building,
 No.287-289 Reclamation St., Kowloon, Hong Kong.
 電話: (852) 2332 1309 傳真: (852) 2385 9241
 E-Mail: office@henry.com.hk

We reserve the right to modify any specification without any prior notice for our continuous product development.

Cat. No. 003-01-JFH

series 65

9-33V



Wide voltage conventional fire detectors

- Ionisation smoke detectors
- Optical smoke detectors
- Heat detectors
- Relay bases



Continuing our policy of bringing our customers the ultimate effectiveness in fire detection that current technology allows, Series 65 has been developed from the highly successful Series 60 range of conventional detectors.

series 65

9-33V

Series 65 incorporates well-proven sensing technologies, together with advances in materials and electronics technology, including an IC based on that used in XP95 analogue addressable detectors.

Having a wide operating voltage of 9-33V, the Series 65 detectors can be integrated into security systems, when used with a relay base.

The Series 65 wide voltage range consists of ionisation, integrating ionisation and optical smoke detectors, 4 grades of heat detector and a range of bases. The detectors are identical in appearance to Series 60.

Each type of detector is available in three versions:

- a standard version
- a version with an LED which flashes continuously in quiescent mode
- and one with both a flashing LED and a magnet-operated test switch (reed relay)



wide operating voltage

▲ advanced electronic technology

▲ flashing LED option

▲ magnetic test switch option

▲ can be used on security systems

▲ electrically compatible with Series 60

▲ mechanically compatible with Series 60

▲ proven detection performance

▲ designed to meet approvals worldwide

▲ Range of bases available

Fire Service Assessment Report for a Proposed Temporary Warehouse for Storage of Hydroelectric Engineering Construction Material for a Period of 3 Years Lot 644 in D.D. 111, Pat Heung, Yuen Long

Site Record Photos

10-05-2020



The public road

Photo no.1 The Site can be accessed via a local track branching off from Wang Toi Shan Shan Tsuen Road.



The existing haul road

Photo no. 2 The general condition of the haul road running to the proposed site

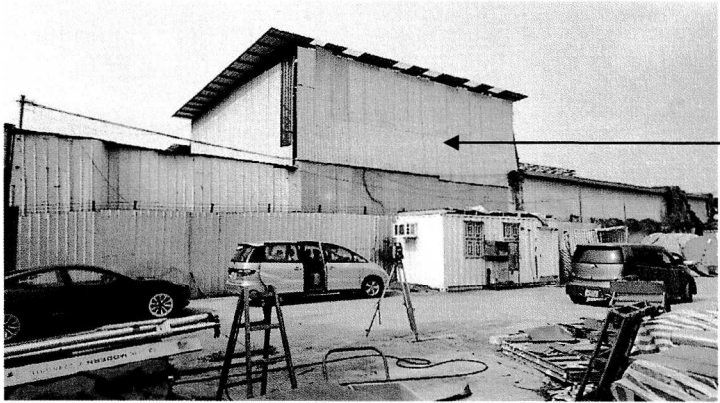


Photo no.3 A general view of the site entrance with a 12.0-meter gate opening.

Fire Service Assessment Report for a Proposed Temporary Warehouse for Storage of Hydroelectric Engineering Construction Material for a Period of 3 Years Lot 644 in D.D. 111, Pat Heung, Yuen Long

Site Record Photos

10-05-2020



The adjacent temporary metal structures beyond boundary

Photo no.4 The existing metal structure at south side beyond the site boundary. It is fenced-out with metal sheets.

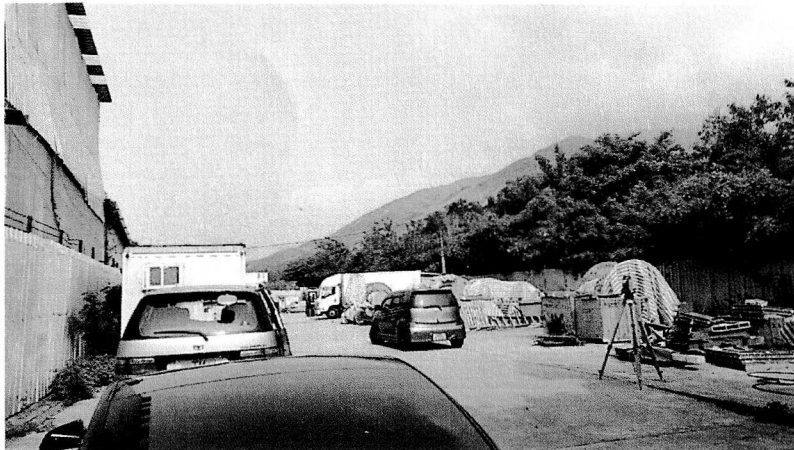
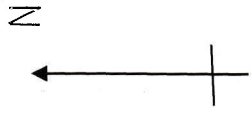


Photo No. 5 Viewing to the west side of the proposed site area. It is maintained as an open space area.



Photo No. 6 To the north of the proposed site area. It will be covered with metal shelters for warehouse.



舊有批准消防報告



Legend:



Smoke Detector



Fire Extinguisher

Lot 644 in D.D. 111	Pat Heung	31.8.22	Draw.01
Temporary Structure (Fire Service)	By: cho		Rev-01