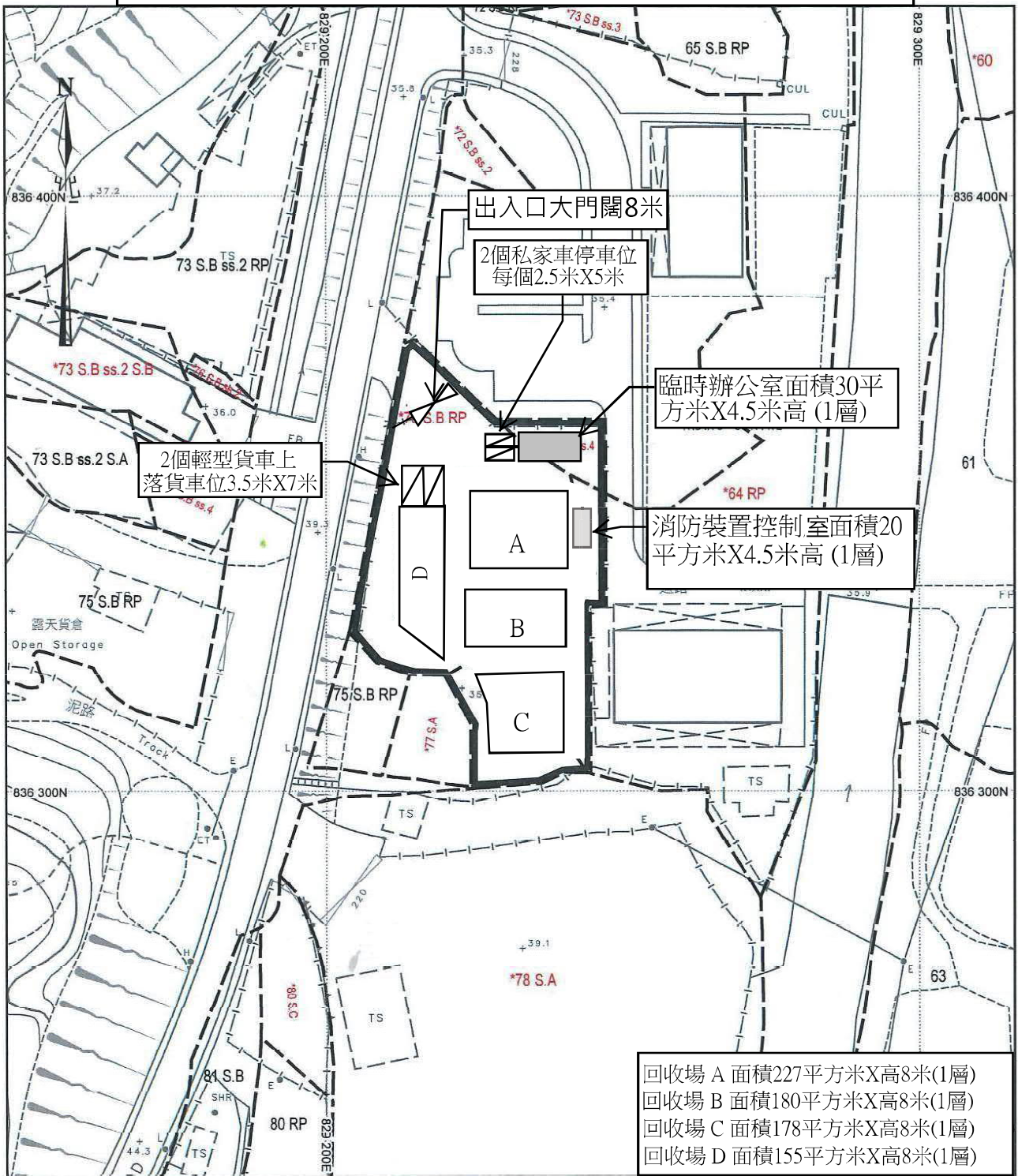


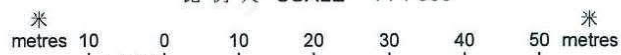
布局圖



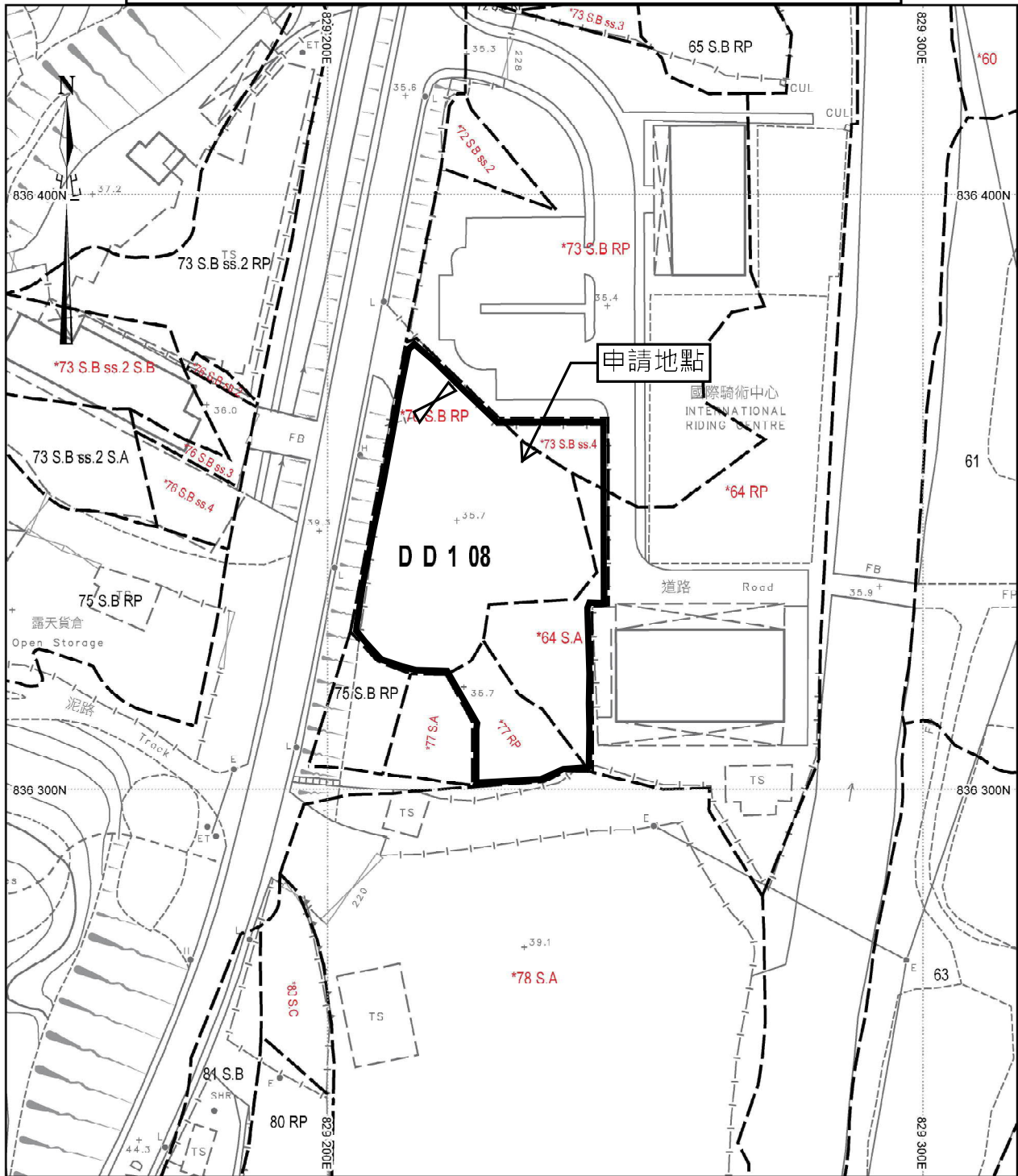
地政總署測繪處

Survey and Mapping Office, Lands Department

比例尺 SCALE 1:1 000



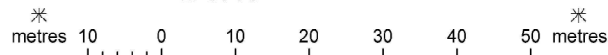
申請地點位置圖



地政總署測繪處

Survey and Mapping Office, Lands Department

比例尺 SCALE 1:1 000



Locality :

Lot Index Plan No. : ags_S00000102861_0001

District Survey Office : Lands Information Center

Date : 03-Nov-2022

Reference No. : 2-SE-25C,2-SE-25D

香港特別行政區政府 — 版權所有

© Copyright reserved - Hong Kong SAR Government

SMO-P01 20221103142532 10

摘要說明：本地段索引圖在其背景的地形圖上標示了各種永久和短期持有的土地的圖像界線。這些土地包括私人地段、政府撥地、短期租約批地，以及其他作核准用途的土地。請注意：(1)本索引圖上的資料會被不時更新而不作事先通知；(2)索引圖的更新或會延後於有關資料的實際變更；以及(3)本索引圖中顯示的界線僅供識別之用，資料是否準確可靠，應徵詢專業土地測量師的意見。

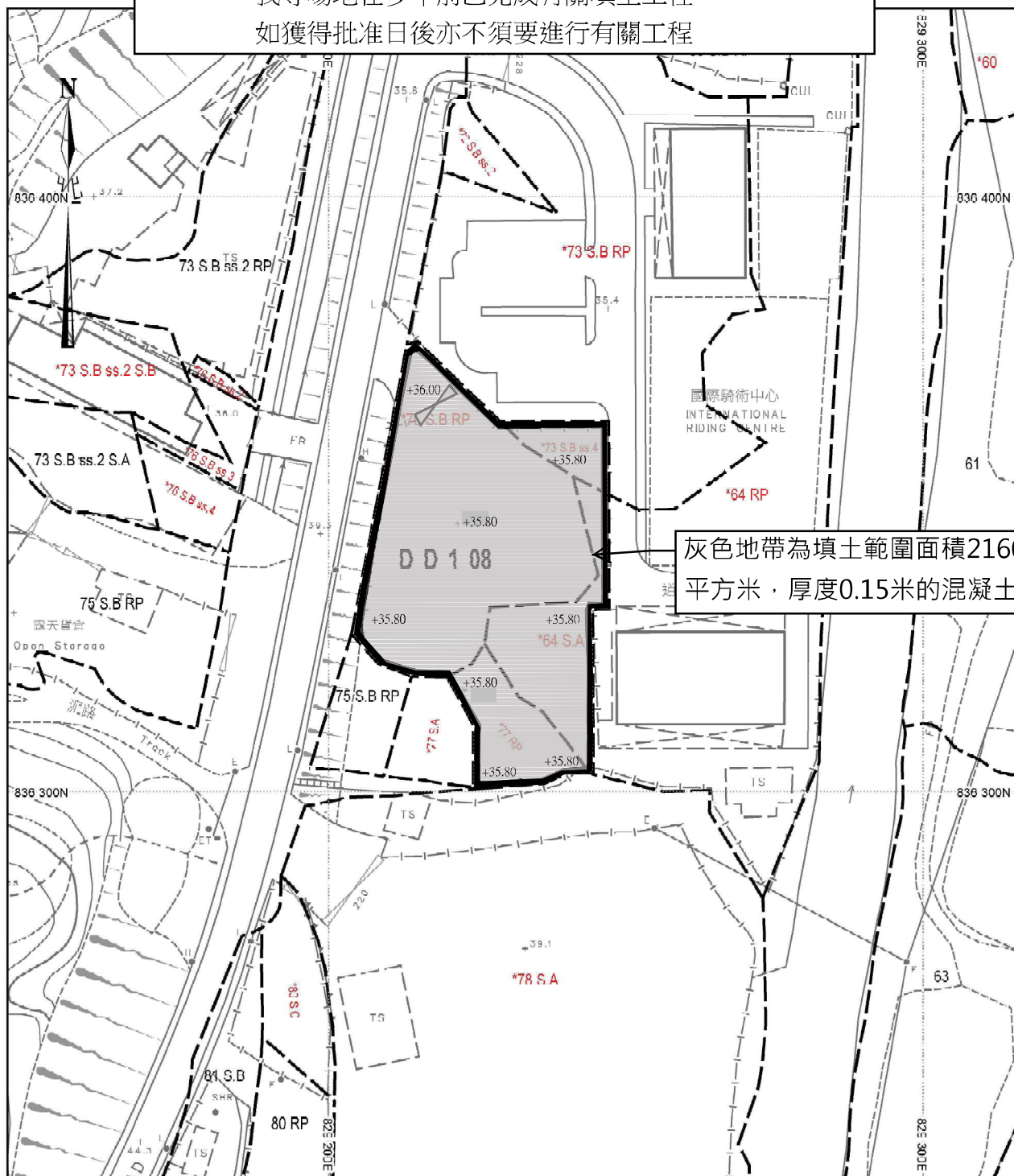
免責說明：如因使用本地段索引圖，或因所依據的本索引圖資料出錯、遺漏、過時或有誤差而引致任何損失或損害，政府概不承擔任何法律責任。

Explanatory notes : This plan shows the graphical boundaries of different kinds of permanent and temporary land holdings with the topographic map in the backdrop. The land holdings as shown may include private lots, government land allocations, short term tenancies and other permitted uses of land. It must be noted that: (1) the information shown on this plan is subject to update without prior notification; (2) there may be time lag between an update and the related changes taken place; and (3) the graphical boundaries as shown are for identification purpose only and interpretation of their accuracy and reliability requires the advice from professional land surveyor.

Disclaimer : The Government shall not be responsible for any loss or damage howsoever arising from the use of this plan or in reliance upon its correctness, completeness, timeliness or accuracy.

申請填土範圍

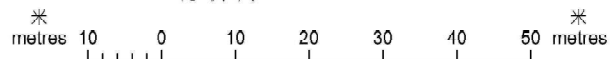
我等場地在前多年已完成有關填土工程，
如獲得批准日後亦不須要進行有關工程



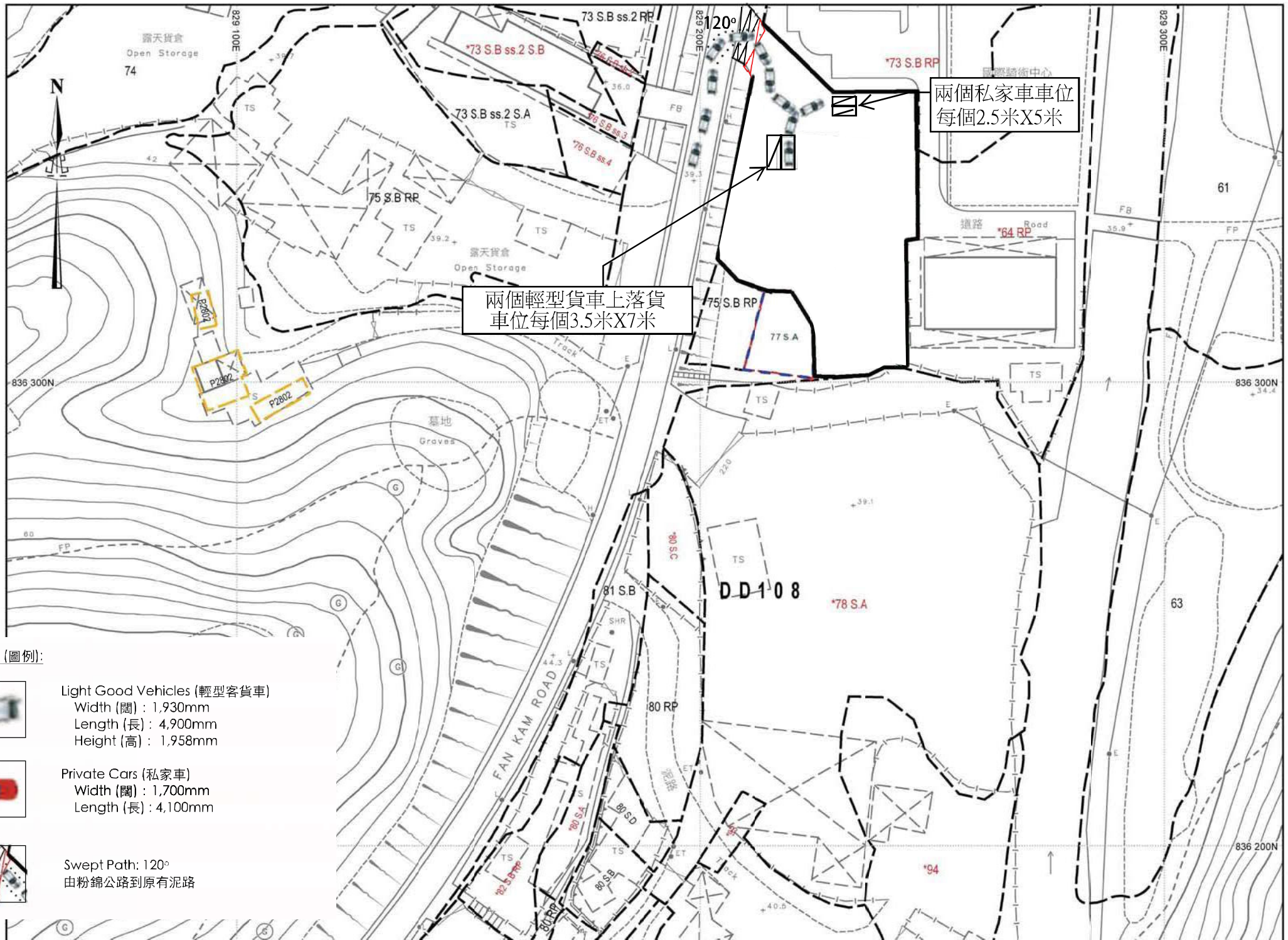
地政總署測繪處

Survey and Mapping Office, Lands Department

比例尺 SCALE 1:1 000



模擬行車路線圖



LEGENDS (圖例):



Light Good Vehicles (輕型客貨車)
 Width (闊) : 1,930mm
 Length (長) : 4,900mm
 Height (高) : 1,958mm



Private Cars (私家車)
 Width (闊) : 1,700mm
 Length (長) : 4,100mm



Swept Path: 120°
 由粉錦公路到原有泥路

A/YL-PH/1055
交通流量評估

至：城市規劃委員會

本中心共有 2 個私家車位及 2 個輕型貨車上落貨位，我等預計經常停泊及出入中心車輛流量。

進入回收中心預計流量 我等預計每日不超過3架次 (私家車)進入回收中心

星期	時間	上午 8 時至 10 時前	上午 10 時至下午 6 時
1 至 6	車輛架次	預計有 2 架次	預計有 1 架次

我等預計每日不超過7架次 (輕型貨車)進入回收中心

星期	時間	上午 8 時至 10 時前	上午 10 時至下午 4 時
1 至 6	車輛架次	預計有 1 架次	預計每小時有 1 架次

離開回收中心預計流量 我等預計每日不超過3架次 (私家車)離開回收中心

星期	時間	上午 8 時至 10 時前	上午 10 時至下午 6 時
1 至 6	車輛架次	預計有 0 架次	預計有 3 架次

我等預計每日不超過7架次 (輕型貨車)離開回收中心

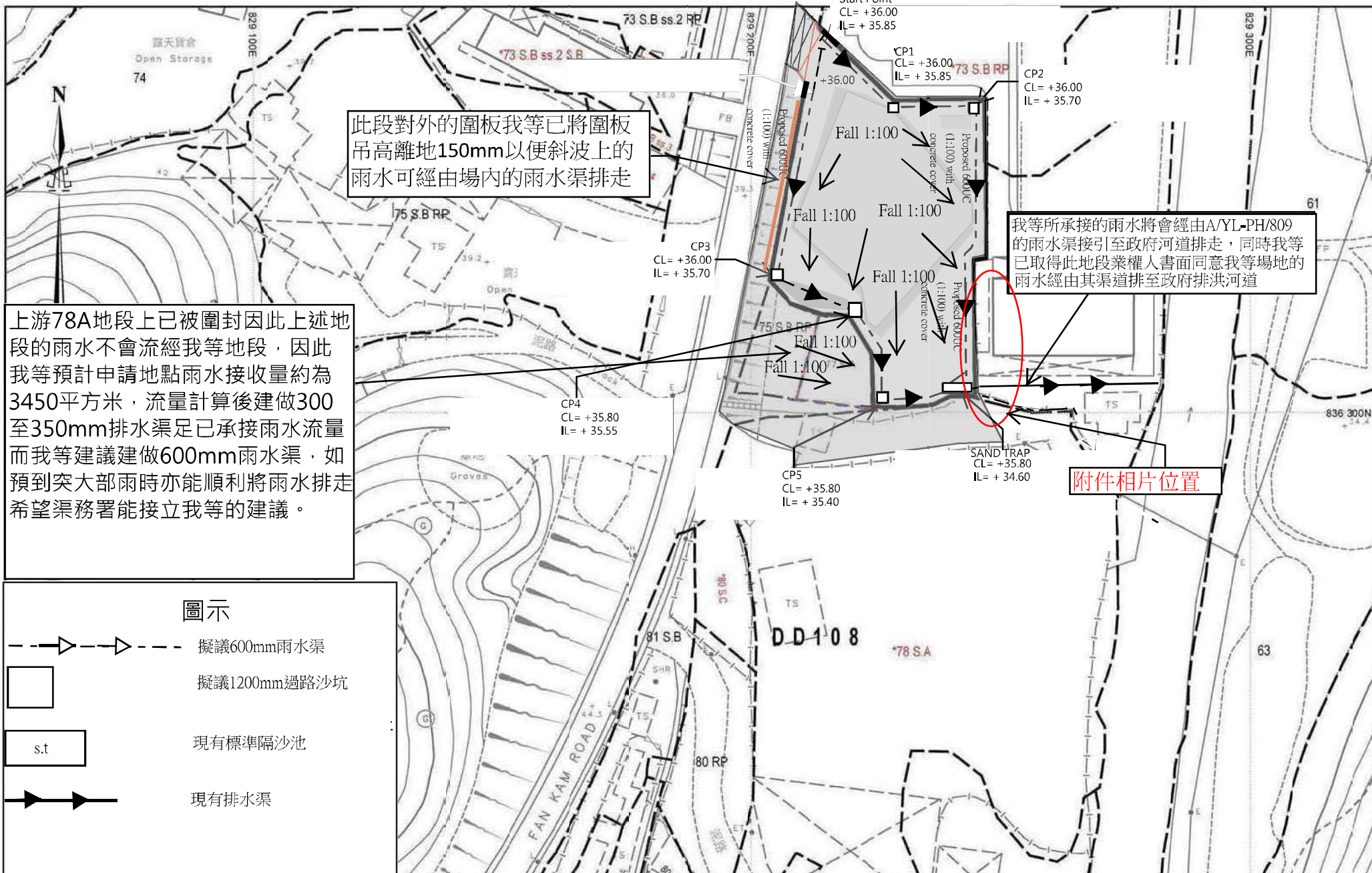
星期	時間	上午 8 時至 10 時前	上午 10 時至下午 4 時
1 至 6	車輛架次	預計有 1 架次	預計每小時有 1 架次

以上為我等回收中心預計車輛流量計評估。以此計算我等回收中心在工作日每小時不會超過2架次的車輛使用粉錦公路，因此絕對不會影響粉錦公路的交通流量。

獲授權代理人 黃新和

06-03-2025

雨水排放建議



此段對外的圍板我等已將圍板吊高離地150mm以便斜波上的雨水可經由場內的雨水渠排走

我等所承接的雨水將會經由A/YL-PH/809的雨水渠接引至政府河道排走，同時我等已取得此地段業權人書面同意我等場地的雨水經由其渠道排至政府排洪河道

上游78A地段上已被圍封因此上述地段的雨水不會流經我等地段，因此我等預計申請地點雨水接收量約為3450平方米，流量計算後建做300至350mm排水渠足已承接雨水流量而我等建議建做600mm雨水渠，如預到突大部雨時亦能順利將雨水排走希望渠務署能接立我等的建議。

附件相片位置

圖示

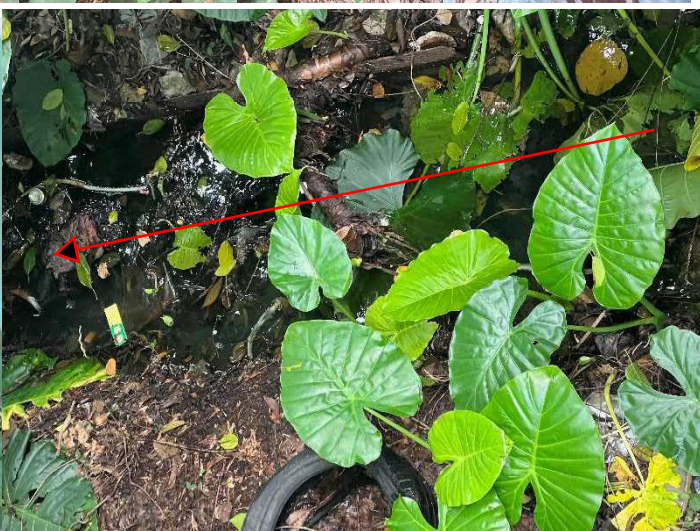
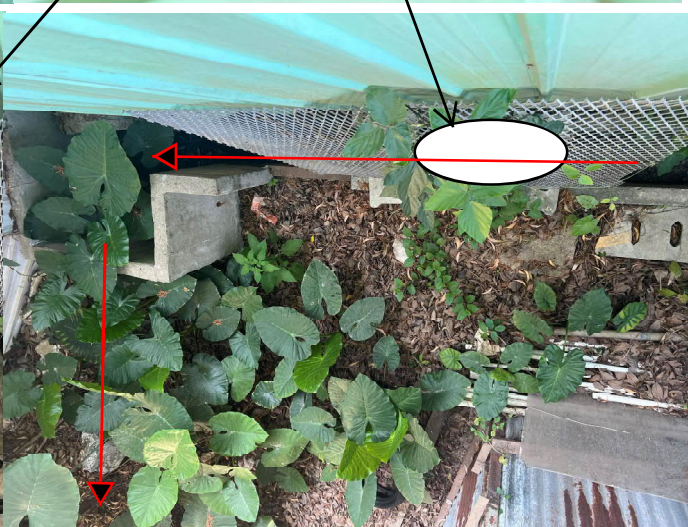
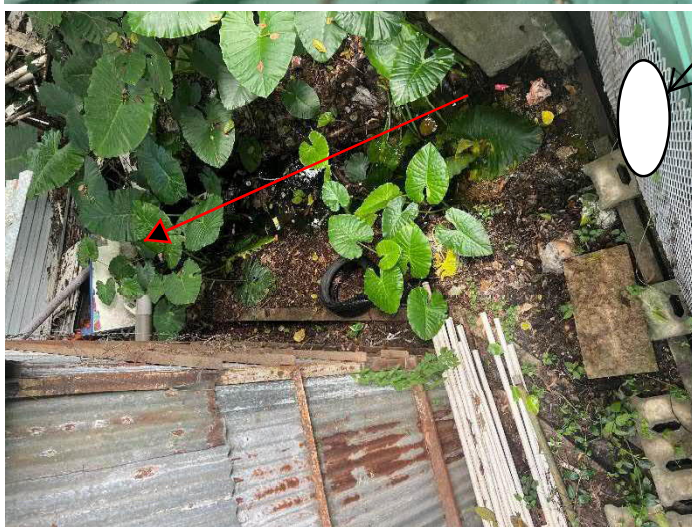
- 擬議600mm雨水渠
- 擬議1200mm過路沙坑
- 現有標準隔沙池
- 現有排水渠

Catchment Area of site
 Site Catchment Area = 3450 m²
 = 0.003450 km²
 Peak runoff in m³/s = 0.278x0.95x250mm/hr x0.003450km²
 = 0.22778 m³/s
 = 13667 liter/min

- Note:**
1. Catchpit (CP1-CP5) with desilting facility shall follow CEDD's standard drawing No. C2406/1,C2046/2A
 2. Catchpit and UC follows Typical Details of Geotechnical Manual for Slope Fig.8.10 and Fig.8.11 respectively.
 3. The inverted level of the connection point shall be verified on site prior the commencement of work
 4. Grating Concrete Cover follows CEDD's standard drawing No. C2412E: U-CHANNELS



A/YL-PH/981 出水口



本公司 凱惠有限公司 商業登記證編號：35340811-001-01-22-3，
為 D.D. 108 Lot 64RP 註冊業權人，現應以下人士的請求加訊投資有限
公司 D.D. 108 Lot 64SA 的註冊業權人，不反對其地段所設置的兩水渠
經由本公司的土地上的渠道（圖中黃色部份），將雨水接引至政府排
洪渠。

如因此安排引致有工程成本開支，一切由加訊投資有限公司負責。

特立此為據

此政

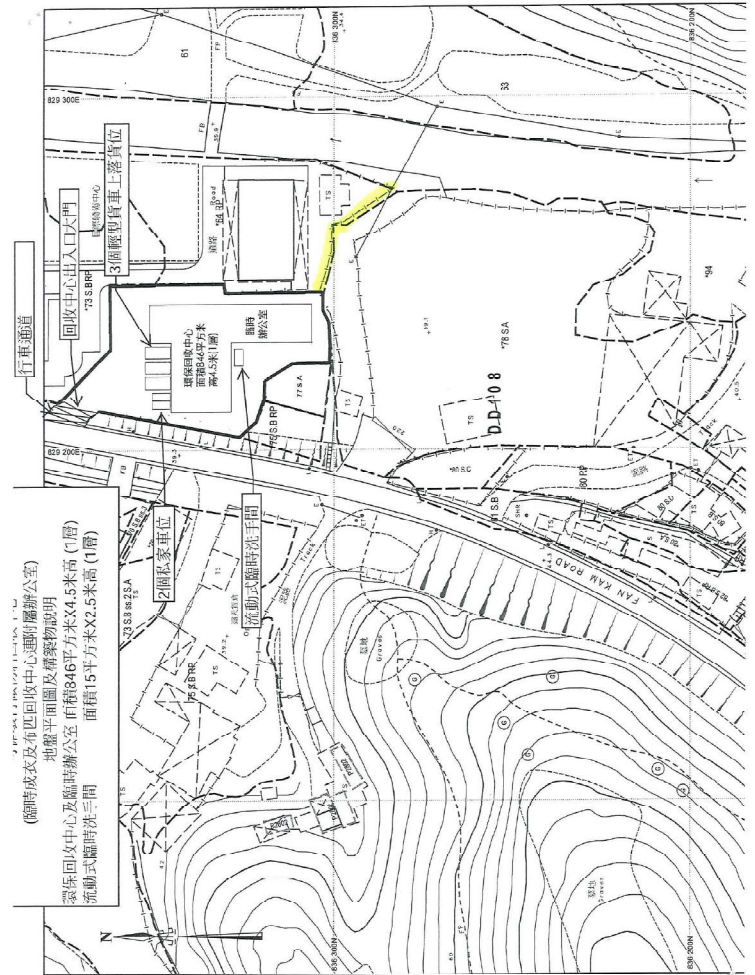
For and on behalf of
PLUS INVESTMENT LIMITED
加訊投資有限公司

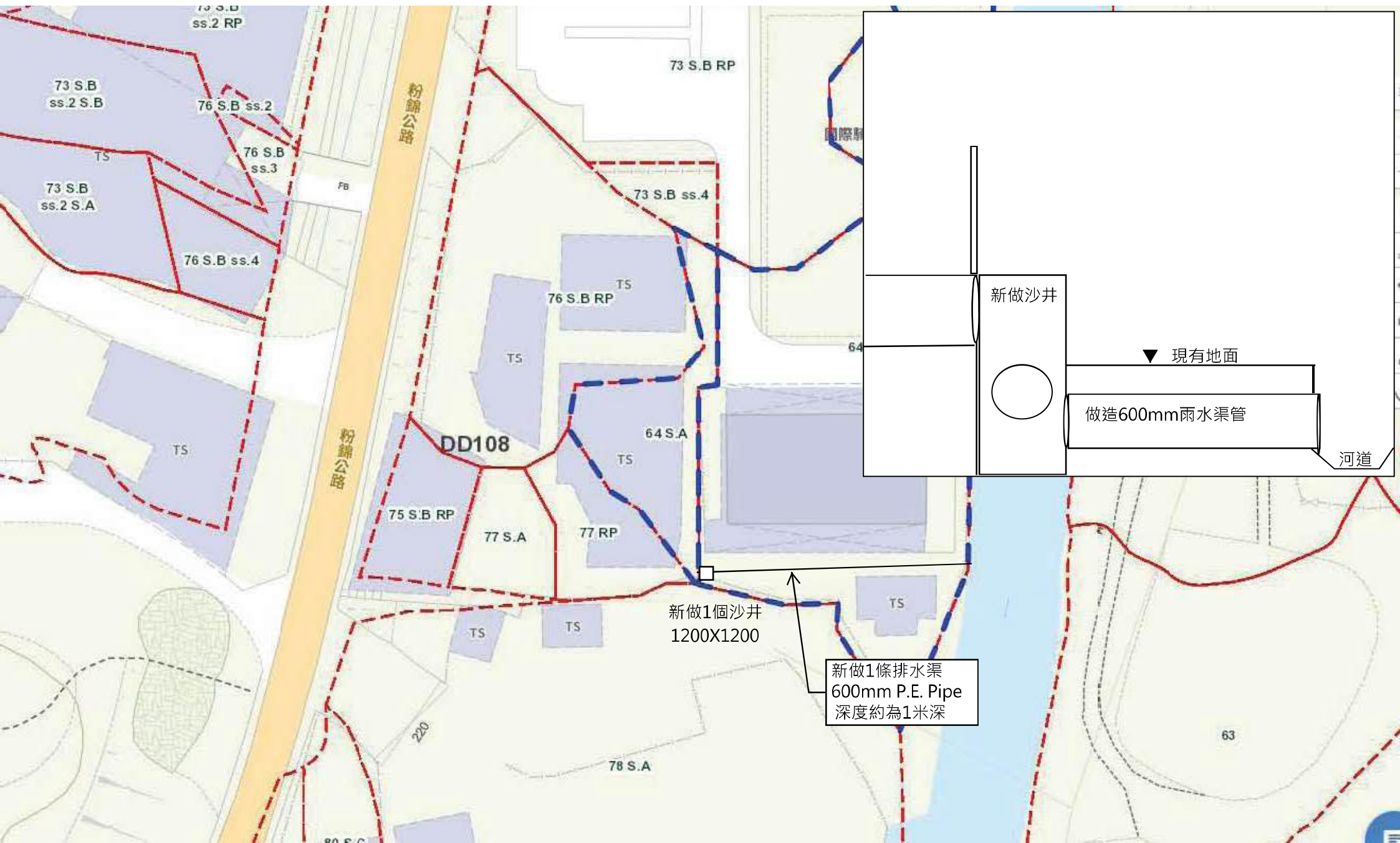
Authorized Signature(s)

加訊投資有限公司
地址：新界元朗宏業南街 12-18 號
新順福中心 5 樓

20-04-2022

凱惠有限公司
(董事 賴偉)





新做沙井

▼ 現有地面

做造600mm雨水渠管

河道

新做1個沙井
1200X1200

新做1條排水渠
600mm P.E. Pipe
深度約為1米深

粉錦公路

粉錦公路

DD108

73 S.B
ss.2 S.B

73 S.B
ss.2 S.A

76 S.B ss.2

76 S.B
ss.3

76 S.B ss.4

73 S.B RP

73 S.B ss.4

76 S.B RP

64 S.A

75 S.B RP

77 S.A

77 RP

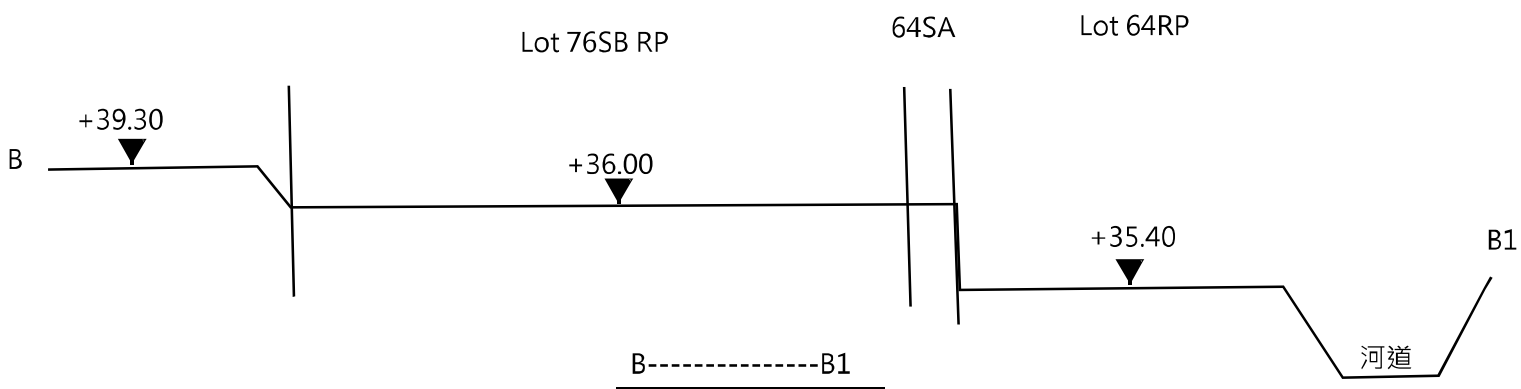
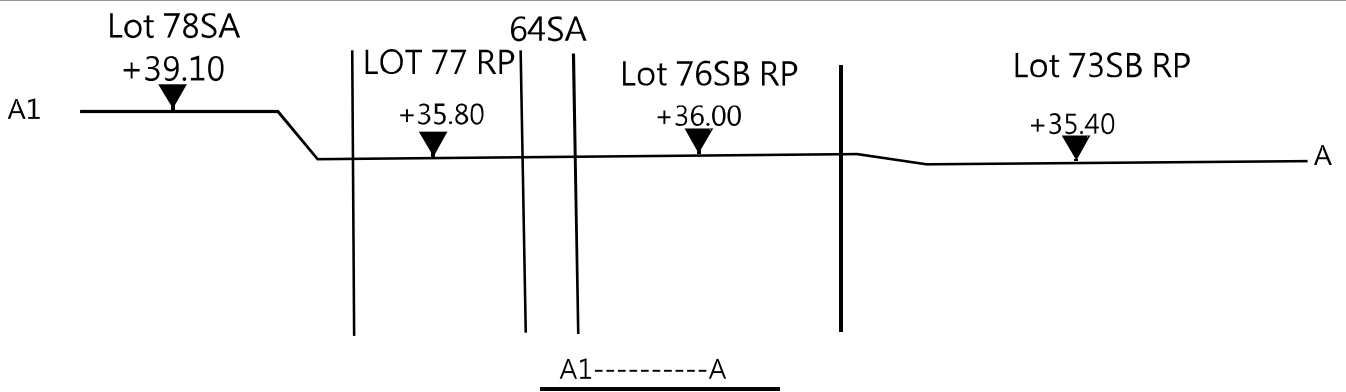
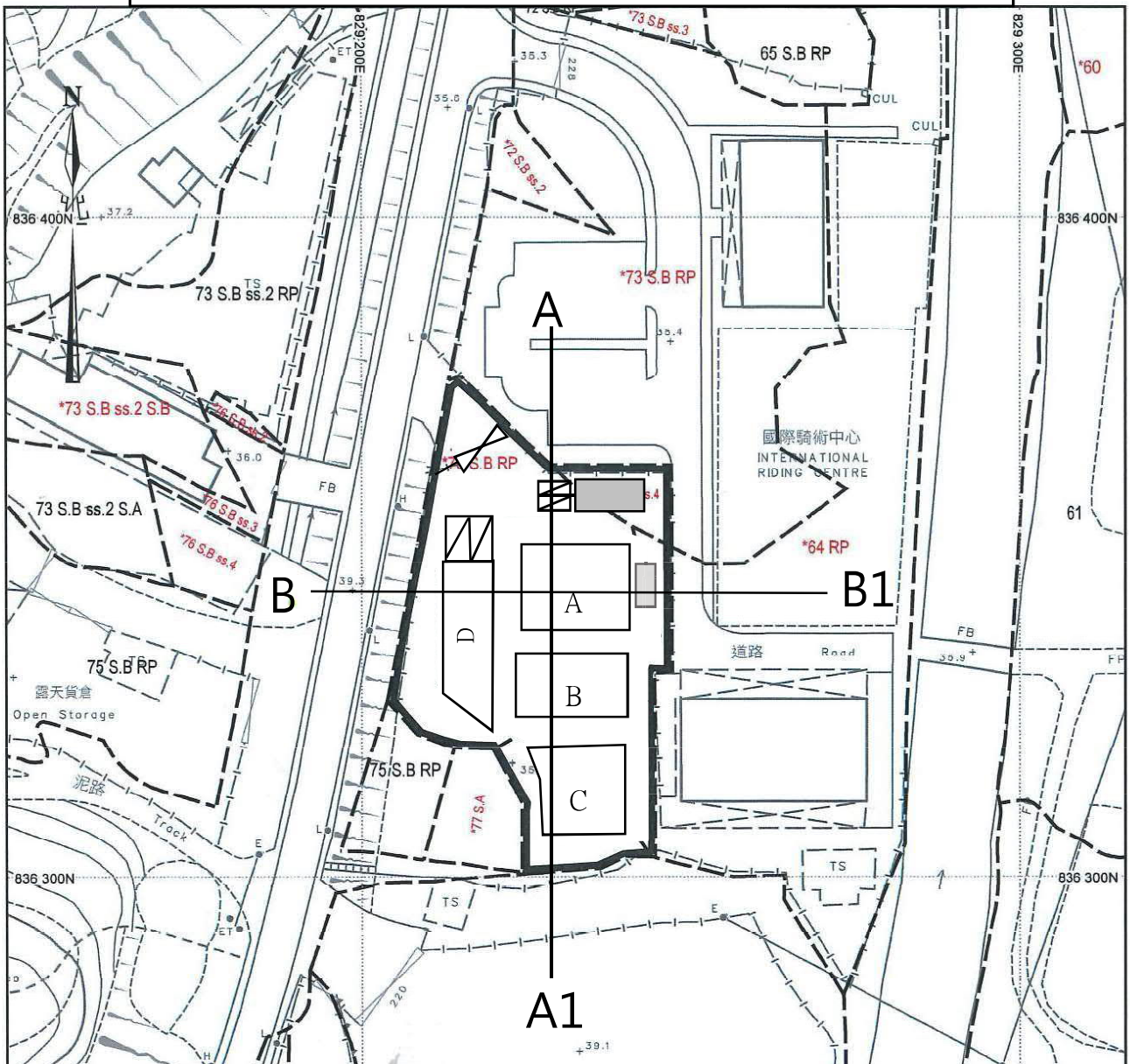
78 S.A

220

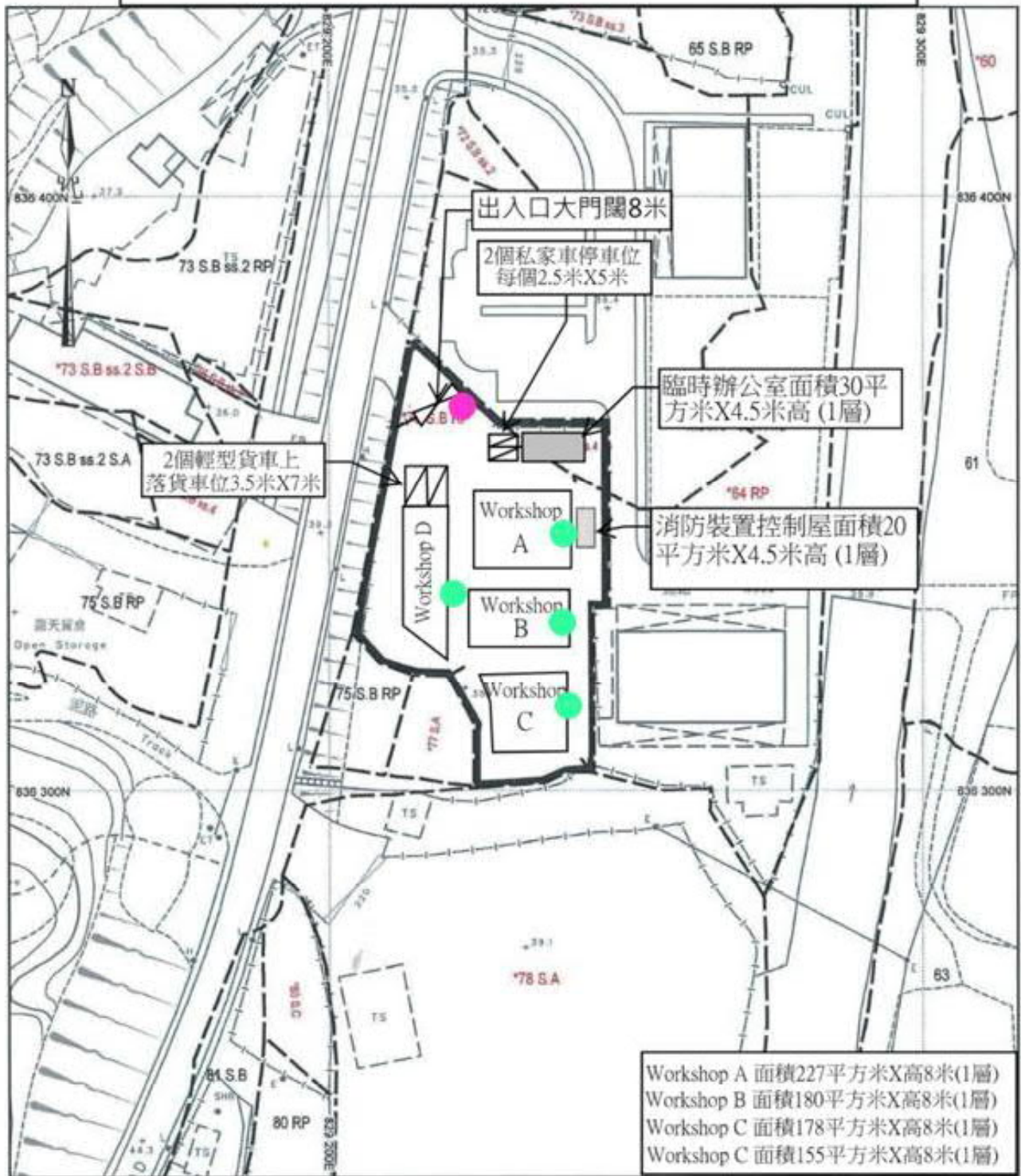
63

80 S.C

橫切面圖



FIRE SERVIC INSTALLATION LAYOUT PLAN



地政總署測繪處

Survey and Mapping Office, Lands Department

比例尺 SCALE 1:1 000



FIRE SERVICES NOTES:

1. HOSE REEL SYSTEM
 - 1.1 HR SYSTEM TO BE PROVIDED AND INSTALLED FOR THE STRUCTURE B4, B5 & B6 IN ACCORDANCE WITH THE CODE OF PRACTICE FOR MINIMUM FIRE SERVICE INSTALLATIONS AND EQUIPMENT.
 - 1.2 HOSE REELS SHALL BE PROVIDED AT THE POSITIONS INDICATED ON PLAN.
 - 1.3 SUFFICIENT HOSE REELS TO BE PROVIDED TO ENSURE THAT EVERY PART OF THE AREA CAN BE REACHED BY A LENGTH OF NOT MORE THAN 30m OF HOSE REEL TUBING.
 - 1.4 AN MODIFIED HOSE REEL SYSTEM WITH 2000L F.S. WATER TANK TO BE PROVIDED AND TO BE SINGLE END FEED FROM TOWN MAIN. THE LOCATION OF THE FS WATER TANK AND FS PUMP ROOM ARE CLEARLY MARKED ON PLANS.
 - 1.5 TWO FIXED FIRE PUMPS (DUTY & STANDBY) TO BE PROVIDED IN THE PUMP ROOM.
 - 1.6 NO FIRE SERVICES INLET TO BE PROVIDED FOR THE MODIFIED HOSE REEL SYSTEM.
 - 1.7 AN INSTRUCTION PLATE SHALL BE PROVIDED NEXT TO THE BREAK GLASS UNIT FOR OPERATION OF HOSE REEL
2. FIRE DETECTION AND ALARM SYSTEM
 - 2.1 FIRE DETECTION AND ALARM SYSTEM SHALL BE PROVIDED IN ACCORDANCE WITH BS 5839--1 : 2017 AND FSD CIRCULAR LETTER NO.6/2021.
 - 2.2 ONE ACTUATING POINT AND ONE AUDIO WARNING DEVICE SHOULD BE LOCATED AT EACH HOSE REEL POINT. THE ACTUATION POINT SHOULD INCLUDE FACILITIES FOR FIRE PUMP START AND AUDIO / VISUAL WARNING DEVICE INITIATION. MANUAL CALL POINT SHOULD BE PROVIDED ADJACENT TO ALL EXITS TO OPEN AIR ON G/F.
 - 2.3 FIRE DETECTION SYSTEM IS TO PROVIDED TO PROTECT THE AREA NOT COVERED BY AUTOMATIC SPRINKLER SYSTEM. HEAT DETECTOR WILL BE PROVIDED FOR ALL STRUCTURES EXCEPT STRUCTURES B4, B5 & B6.
 - 2.4 AN ADDRESSABLE TYPE FIRE ALARM PANEL TO BE PROVIDED AND LOCATED INSIDE PUMP ROOM.
3. EMERGENCY LIGHTING
 - 3.1 SUFFICIENT EMERGENCY LIGHTING SHALL BE PROVIDED THROUGHOUT THE ENTIRE BUILDINGS/STRUCTURES IN ACCORDANCE WITH BS 5266-1:2016 AND BS EN 1838:2013 AND FSD CIRCULAR LETTER 4/2021.
4. EXIT SIGN
 - 4.1 SUFFICIENT DIRECTIONAL AND EXIT SIGN SHALL BE PROVIDED IN ACCORDANCE WITH BS 5266: PART 1 AND FSD CIRCULAR LETTER 5/2008.
5. MISCELLANEOUS F.S. INSTALLATION
 - 5.1 PORTABLE FIRE EXTINGUISHERS WITH SPECIFIED TYPE AND CAPACITY TO BE PROVIDED AT LOCATION AS INDICATED ON PLANS.
 - 5.2 NO EMERGENCY GENERATOR TO BE PROVIDED FOR SERVING THE EMERGENCY POWER. DUPLICATED POWER SUPPLIES FOR ALL FIRE SERVICES INSTALLATIONS COMPRISING A CABLE CONNECTED FROM ELECTRICITY MAINS DIRECTLY BEFORE THE MAIN SWITCH.
 - 5.3 NO DYNAMIC SMOKE EXTRACTION SYSTEM SHALL BE PROVIDED SINCE FIRE COMPARTMENT OF STRUCTURE B1-B9 NOT EXCEEDING 7000 CUBIC METERS.
 - 5.4 NO AUDIO/VISUAL ADVISORY SYSTEM SHALL BE PROVIDED SINCE FIRE COMPARTMENT OF STRUCTURE B1-B9 NOT EXCEEDING 2000 SQUARE METERS.
 - 5.5 NO DANGEROUS GOODS WILL BE STORED AT ALL STRUCTURES.

LEGEND (FOR LAYOUT PLAN)

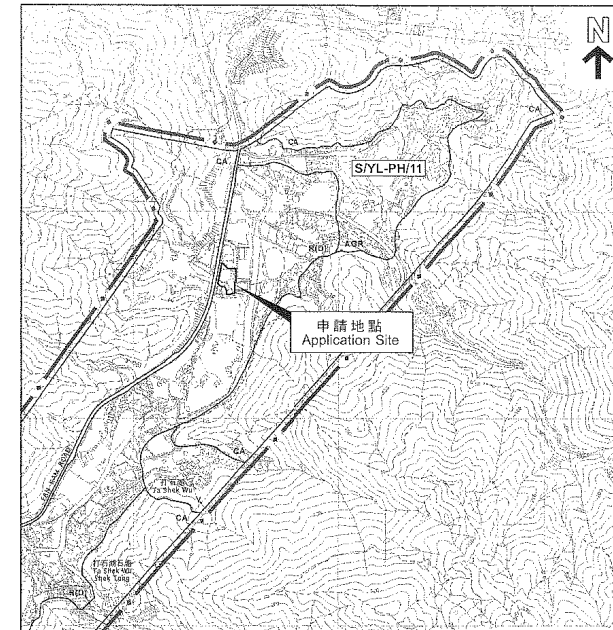
- HOSE REEL W/ LOCKABLE GLASS FRONTED NOZZLE BOX, STRIKER, C/W FIRE ALARM BELL & BREAK GLASS UNIT
- 150mm FIRE ALARM BELL
- BREAK GLASS UNIT
- SPRINKLER HEAD
- FLOW SWITCH
- MONITORED GATE VALVE
- SPRINKLER ZONE SUBSIDIARY CONTROL VALVE ASSEMBLY INCLUDES ZONE SUBSIDIARY CONTROL VALVE, FLOW SWITCH, TEST GATE VALVE AND DRAIN VALVE
- GATE VALVE
- NON RETURN VALVE
- VORTEX INHIBITOR
- BALL FLOAT VALVE
- PRESSURE SWITCH
- SPRINKLER / HOSE REEL PIPE
- SPRINKLER CONTROL VALVE SET
- CHECK METER POSITION
- SPRINKLER / F.S. INLET
- 5kg CO2 TYPE FIRE EXTINGUISHER
- 4kg DRY POWDER TYPE FIRE EXTINGUISHER
- PUMP
- 150mm WATER ALARM GONG
- ADDRESSABLE TYPE FIRE ALARM PANEL
- PUMP CONTROL PANEL
- EMERGENCY LIGHT
- EXIT SIGN

ABBREVIATION

- SPR. SPRINKLER
- H.R. HOSE REEL
- F.E. FIRE EXTINGUISHER
- CO₂ CARBON DIOXIDE
- L.P.C. LOSS PREVENTION COUNCIL
- F.S.I. FIRE SERVICES INSTALLATION
- H/L HIGH LEVEL
- M/L MID LEVEL
- L/L LOW LEVEL
- F/A FROM ABOVE
- F/B FROM BELOW
- T/A TO ABOVE
- T/B TO BELOW
- U/G UNDERGROUND
- F.S. FIRE SERVICES

DRAWING LIST:

DRWING NO.	REVISION	DRAWING TITLE
FS-01	A	F.S. NOTES, BLOCK PLAN, LEGEND, ABBREVIATION, DRAWING LIST
FS-02	A	FIRE SERVICES INSTALLATION LAYOUT PLAN



REV	DESCRIPTION	DATE	BY
A	1st SUBMISSION	10-03-2024	WC

East Power Engineering Limited
 Plot A, 7/F, Sze Shing Commercial Building
 41, Gz. King Street, Tsim Sha Tsui, Kowloon
 Fax : 2384-3372 Tel : 2387-3338

PROJECT
 FIRE SERVICES INSTALLATION FOR S/YL-PH/11
 738411228-01-FS-02-FIRE SERVICES INSTALLATION LAYOUT PLAN

DRAWING TITLE
 F.S. NOTES, BLOCK PLAN, LEGEND, ABBREVIATION, DRAWING LIST

DRWING NO.	REVISION	DATE
FS-01	A	10-03-2024
FS-02	A	10-03-2024

SCALE 1:1