



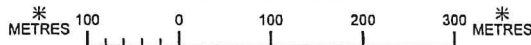
申請地點  
Application Site

HA PAK NAI

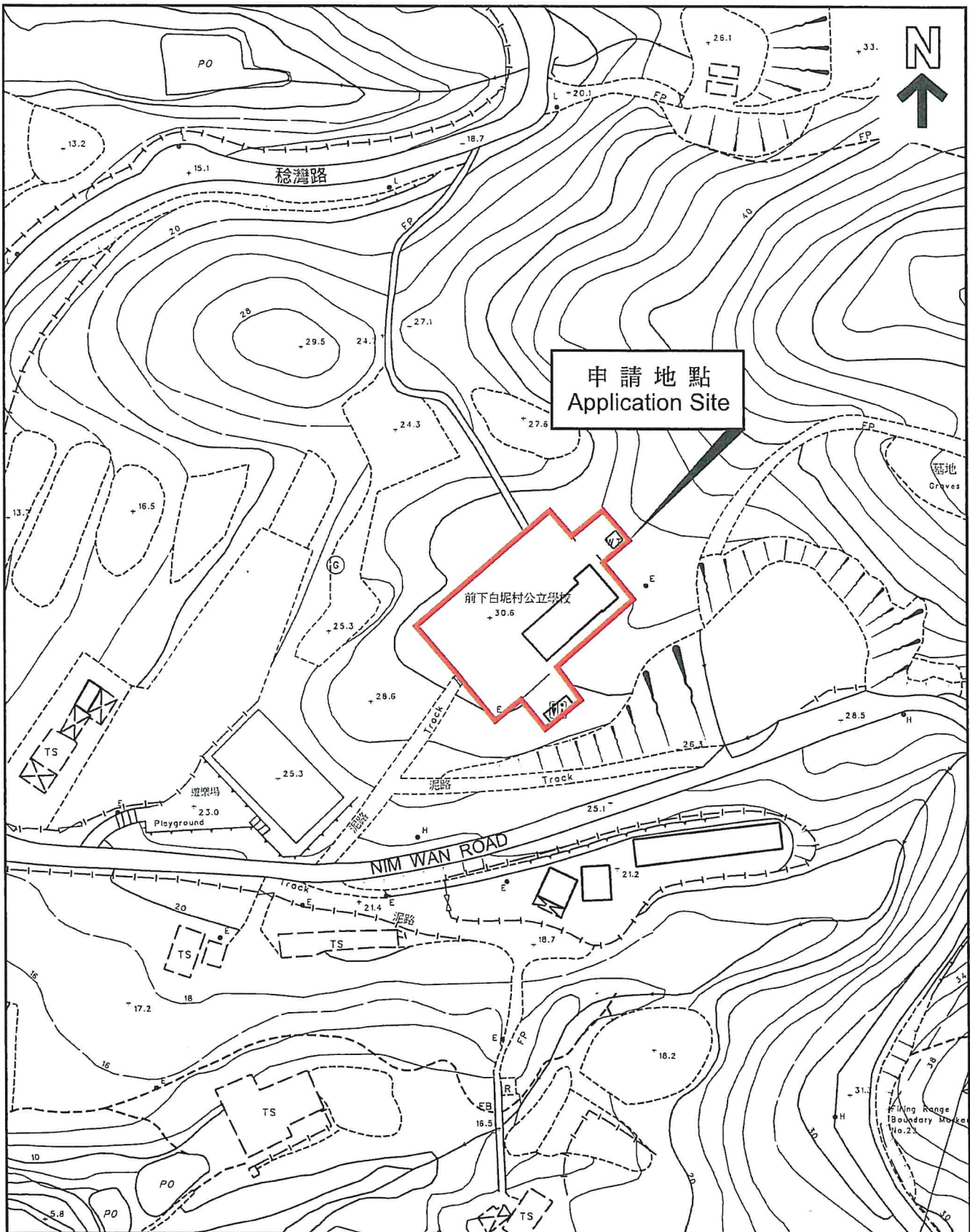
本摘要圖於2024年2月7日擬備，  
所根據的資料為於2006年10月17日  
核准的分區計劃大綱圖編號 S/YL-PN/9  
EXTRACT PLAN PREPARED ON 7.2.2024  
BASED ON OUTLINE ZONING PLAN No.  
S/YL-PN/9 APPROVED ON 17.10.2006

位置圖 LOCATION PLAN

SCALE 1:7 500 比例尺



申請地點界線只作識別用  
APPLICATION SITE BOUNDARY  
FOR IDENTIFICATION PURPOSE ONLY



申請地點  
Application Site

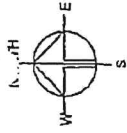
前下白坭村公立學校  
+ 30.6

NIM WAN ROAD

本摘要圖於2024年2月7日擬備，  
所根據的資料為測量圖編號  
5-NE-14C 和 5-NE-19A  
EXTRACT PLAN PREPARED ON 7.2.2024  
BASED ON SURVEY SHEETS No.  
5-NE-14C AND 5-NE-19A

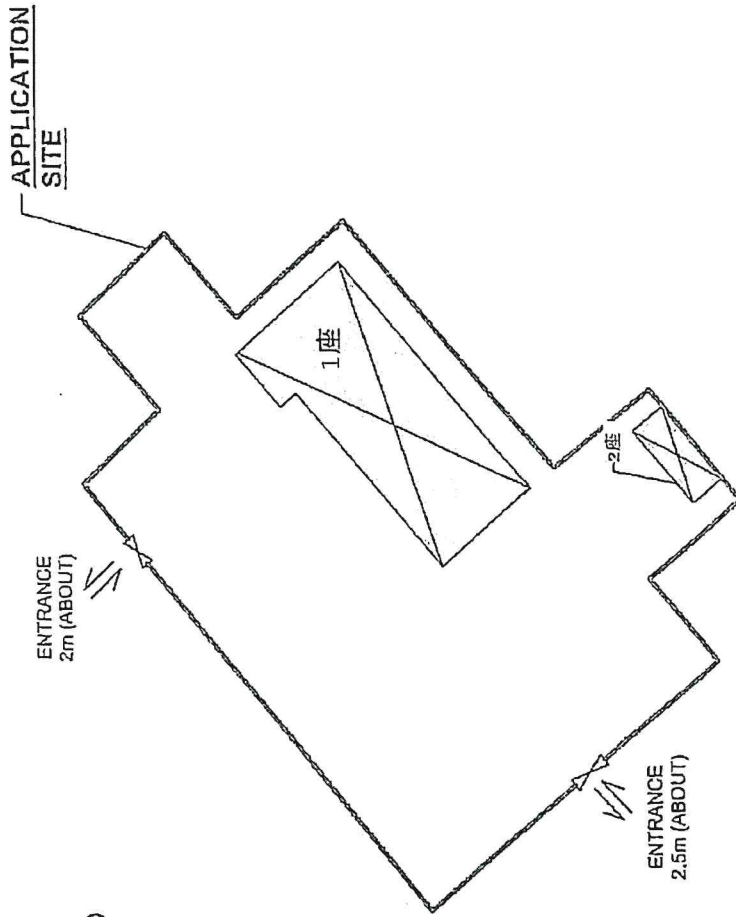
平面圖 SITE PLAN

申請地點界線只作識別用  
APPLICATION SITE BOUNDARY  
FOR IDENTIFICATION PURPOSE ONLY



Development Parameters

Application Site Area: 1000m<sup>2</sup> (About)  
 Covered Area: 166m<sup>2</sup> (About)  
 Open Space: 834m<sup>2</sup> (About)  
 No. of Structure: 2  
 Non-domestic GFA: 166m<sup>2</sup> (About)  
 Building Height: 3-4m (About)  
 No. of Storey: 1



STRUCTURE	USE	COVERED AREA	NON-DOM. GFA	BUILDING HEIGHT
1座	Temple (Buddhist)	150m <sup>2</sup> (ABOUT)	150m <sup>2</sup> (ABOUT)	4m (ABOUT)(1-STOREY)
2座	TOILET	16m <sup>2</sup> (ABOUT)	16m <sup>2</sup> (ABOUT)	3m (ABOUT)(1-STOREY)
TOTAL		166m <sup>2</sup> (ABOUT)	166m <sup>2</sup> (ABOUT)	

Design No.	FDZ	Ver.	01
Project Name			
Religious Institution (Buddhist Temple) For a period of 5 years			
FORMER HA PAK NAU TSUEN PUBLIC PRI. SCH. IN D.D. 133			
Design Title	LAYOUT PLAN		
Drawn	25 Jan 2024		
Checked			



地政總署  
元朗地政處  
DISTRICT LANDS OFFICE,  
YUEN LONG  
LANDS DEPARTMENT

電話 Tel: 2443 3114  
圖文傳真 Fax: 2473 3134  
電郵地址 Email: esylwl@landsd.gov.hk  
本處檔號 Our Ref: (66) in DLOYL 523/YAT/2023

我們矢志努力不懈，提供盡善盡美的土地行政服務。  
We strive to achieve excellence in land administration.

新界元朗橋樂坊二號元朗政府合署七及九至十一樓  
7/F&9/F.-11/F., Yuen Long Government Offices  
No. 2 Kiu Lok Square, Yuen Long, N.T.

網址 Website: www.landsd.gov.hk

**掛號郵件及傳真(2391 6700)**

1 盧比基金會(香港)有限公司

(經辦人：李志堅先生)

李先生：

**申請短期形式使用空置政府土地-前下白坭村公立學校**

關於閣下於 2024 年 4 月 29 日的短期租約申請。

本處已將該短期租約申請分發給各個局/部門以徵求意見。雖然仍在等待一些相關局/部門的意見，但其他一些局/部門已提供了需要您關注或進一步回應的建議。請參閱附表以便您處理。

請在 2024 年 10 月 7 日或之前回覆我們，以便我們進一步處理您的申請。如有任何問題，請致電 2443 3114 與下方簽名者聯繫。

元朗地政專員

(吳少琪



代行)

2024 年 9 月 16 日

相關局/部門的意見摘錄  
申請者需關注或進一步回應

局/部門	意見
消防處	<p>請注意，本處原則上不反對擬議的短期租約，但所提供的消防裝置和消防用水必須令消防處處長滿意。由於與擬建宗教機構有關的風險有別於一般的短期租約申請，請告知申請人在設置此項申請的消防裝置時，應參考現行的《最低限度之消防裝置及設備守則》。消防安全規定的細節會在收到正式提交的建築圖則或有關發牌當局的轉介後制定。</p>
食物環境衛生署	<p>本署對此事項沒有負面意見，並提出一般建議如下：</p> <ul style="list-style-type: none"><li>(i) 食物環境衛生署（食環署）的設施不會受影響；</li><li>(ii) 根據《公眾衛生及市政條例》（第132章）及其他相關法例，任何受食物環境衛生署署長規管的公眾飲食服務／活動，均須領有由食環署發出的適當牌照／許可證；以及</li><li>(iii) 申請人須自費妥善處理該等活動／操作所產生的任何廢物。有關工作及運作不得對周圍環境造成任何滋擾、蟲害及阻礙。</li></ul>

# 1. FIRE SERVICES DEPARTMENT REQUIREMENTS

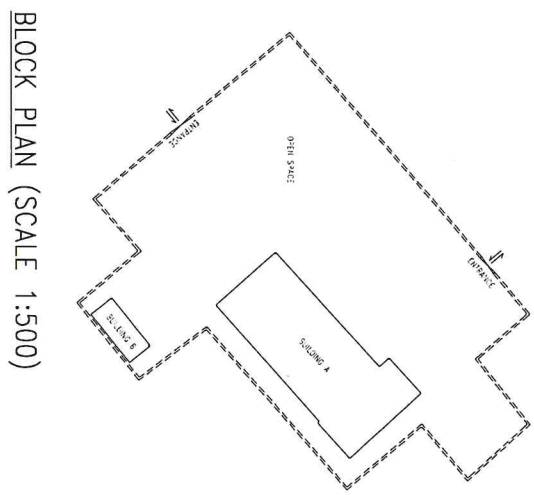
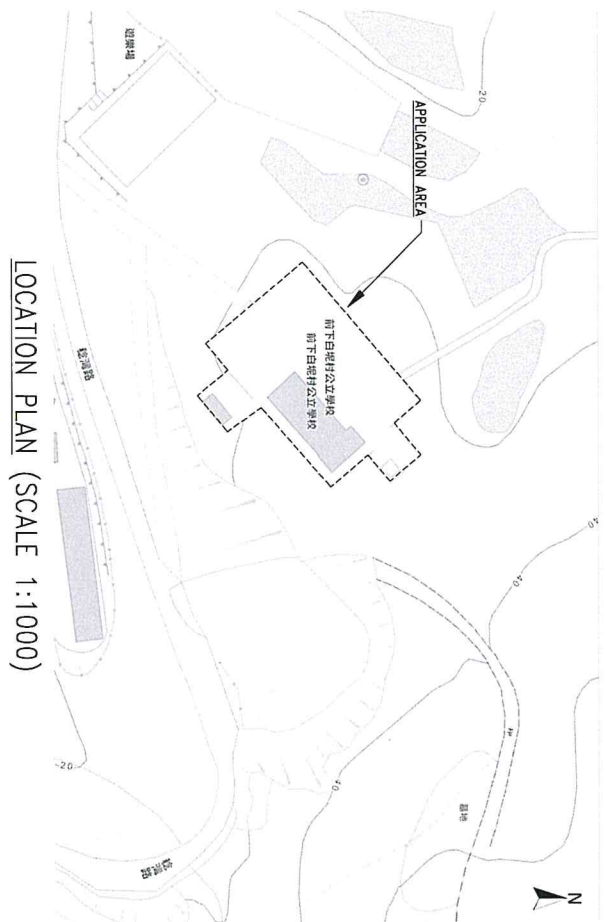
THE FIRE SERVICES (FS) INSTALLATION WILL BE PROVIDED IN ACCORDANCE WITH CLAUSE 4.11 INSTITUTIONAL BUILDINGS - LOW RISE OF THE LATEST CODE OF PRACTICE FOR MINIMUM FIRE SERVICE INSTALLATIONS AND EQUIPMENT (SEPTEMBER 2022 EDITION).


1. ALARMS/SIGNAL APPROPRIATE SYSTEMS
- 1.1 NO AUDIO/VISUAL ALARMS SYSTEM SHALL BE PROVIDED FOR SINGLE FLOOR INSTITUTIONAL BUILDING WHICH DOES NOT EXCEED 2000 SQUARE METERS.
2. AUTOMATIC ACTUATING DEVICES
- 2.1 NO AUTOMATIC ACTUATING DEVICES SHALL BE PROVIDED FOR SINGLE FLOOR INSTITUTIONAL BUILDING DUE TO NO INSULATION PROVISION OF FIRE SHUTTER/ SMOKE CURTAIN / DAMPER.
3. AUTOMATIC FLOOD INSTALLATION OTHER THAN WATER
- 3.1 NO AUTOMATIC FLOOD INSTALLATION OTHER THAN WATER SHALL BE PROVIDED FOR SINGLE FLOOR INSTITUTIONAL BUILDING DUE TO NO CRITICAL EQUIPMENT INSTALLATION.
4. EMERGENCY GENERATOR
- 4.1 NO EMERGENCY GENERATION SHALL BE PROVIDED FOR SINGLE FLOOR INSTITUTIONAL BUILDING.
5. EMERGENCY LIGHTING
- 5.1 EMERGENCY LIGHTING SHALL BE PROVIDED THROUGHOUT THE ENTIRE BUILDING EXCEPT AND COMPLY WITH BS5586 PART 1:2016 FSD CIRCULAR LETTER 4/2021 AND BS5586:2013.
- 5.2 EMERGENCY LIGHTING SHALL BE BACKUP BY SELF-COMMANDED BATTERY AS EMERGENCY POWER SUPPLY, THE BATTERIES FOR THE EMERGENCY LIGHTING CIRCUITS SHALL BE CAPABLE OF MAINTAINING THE REQUIRED LIGHTING LEVELS FOR A PERIOD OF 1 HOUR.
6. EXIT SIGNS
- 6.1 EXIT SIGNS SHALL BE PROVIDED IN ACCORDANCE WITH BS5586 PART 1:2016 AND FSD CIRCULAR LETTER 4/2021 AND BACKUP BY SELF COMMANDED BATTERY AS EMERGENCY POWER SUPPLY.
- 6.2 THE BATTERIES FOR THE EXIT SIGNS SHALL BE CAPABLE OF MAINTAINING THE REQUIRED LIGHTING LEVELS FOR A PERIOD OF 1 HOUR.
7. FIRE ALARM SYSTEM
- 7.1 NO AUTOMATIC FIRE DETECTION AND MANUAL FIRE ALARM SYSTEM SHALL BE PROVIDED FOR SINGLE FLOOR INSTITUTIONAL BUILDING.
8. FIRE DETECTION SYSTEM
- 8.1 NO AUTOMATIC FIRE DETECTION SYSTEM SHALL BE PROVIDED FOR SINGLE FLOOR INSTITUTIONAL BUILDING.
9. FIRE HANDHOLD AND LOSS REL SYSTEM
- 9.1 NO FIRE HANDHOLD/ROSE REL SYSTEM SHALL BE PROVIDED FOR SINGLE FLOOR INSTITUTIONAL BUILDING, AS THIS IS THE EXISTING BUILDING WITH GROUND FLOOR ONLY.
10. FIREWORKS LET
- 10.1 NO FIREWORKS LET SHALL BE PROVIDED FOR SINGLE FLOOR PUBLIC TOILET BUILDING.
11. PORTABLE FIRE EXTINGUISHERS
- 11.1 PORTABLE FIRE EXTINGUISHERS SHALL BE PROVIDED AS INDICATED ON THE PLANS.
12. AUTOMATIC SPRINKLER SYSTEM
- 12.1 NO AUTOMATIC SPRINKLER SYSTEM SHALL BE PROVIDED FOR SINGLE FLOOR INSTITUTIONAL BUILDING AS ALL PARTS OF BUILDINGS WITH TOTAL FLOOR AREA ARE NOT EXCEEDING 200 SQUARE METERS.
13. VENTILATION / AIR CONDITIONING CONTROL SYSTEM
- 13.1 VENTILATION / AIR CONDITIONING CONTROL (VAC) SYSTEM COMPLYING WITH THE REQUIREMENTS OF SECTION 5.27 OF THE LATEST CODE OF PRACTICE FOR MINIMUM FIRE SERVICES INSTALLATIONS AND EQUIPMENT SHALL BE PROVIDED, IF REQUIRED.

DOOR SCHEDULE	FIRE RESISTANT RATING (FRR) (MINS.)
W FULL HEIGHT WOODEN DOOR	-
(W) 1.8m HEIGHT WOODEN DOOR	-

SCHEDULE OF DEVELOPMENT DATA	ACTUAL GFA	SITE COVERAGE
BUILDING A	150 sq.m.	160 sq.m.
BUILDING B	16 sq.m.	16 sq.m.
OPEN SPACE	-	834 sq.m.

SCHEDULE OF UFA			
LOCATION	INTENDED USE	U.F.A	
M. LAV.	TOILET	6.05 sq.m.	
F. LAV.	TOILET	6.05 sq.m.	
MEETING HALL	MEETING HALL	130.46 sq.m.	
STORE	STORAGE	18.47 sq.m.	





**CDPM**  
CDBM ENGINEERING CONSULTANT COMPANY LIMITED  
TEL: (852) 2529 1088 FAX: (852) 3020 6998  
E-mail: mail@cdpm.com.hk

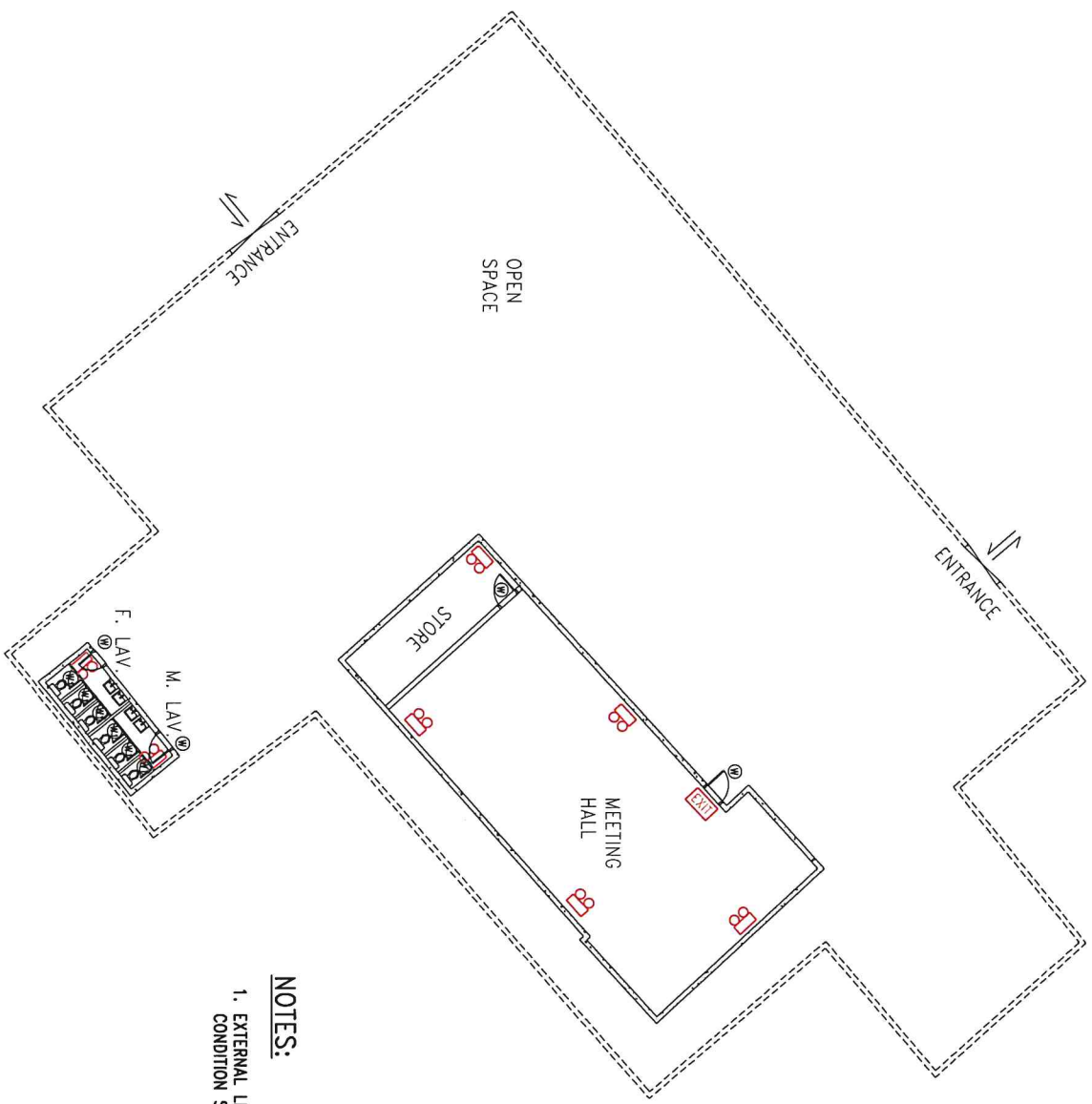
REV. NO.	DATE	TITLE

**GENERAL NOTES**

PROJECT  
FIRE SERVICE SYSTEM INSTALLATION AT  
FORMER HA PAK NAI TSUEN PUBLIC PRIMARY SCHOOL, HA PAK NAI, YUEN LONG, NEW  
TERRITORIES


SCALE	DRAWN	DWG. NO.	REV.
NTS	T W	GN-01	(0)
PAPER SIZE	CHECKED	DATE	REF
A3	C W	07-11-2024	W1293

- LEGEND:**
-  EXIT SIGN (1 NO.)
  -  WALL MOUNTED TYPE EMERGENCY LIGHTING (7 NOS.)

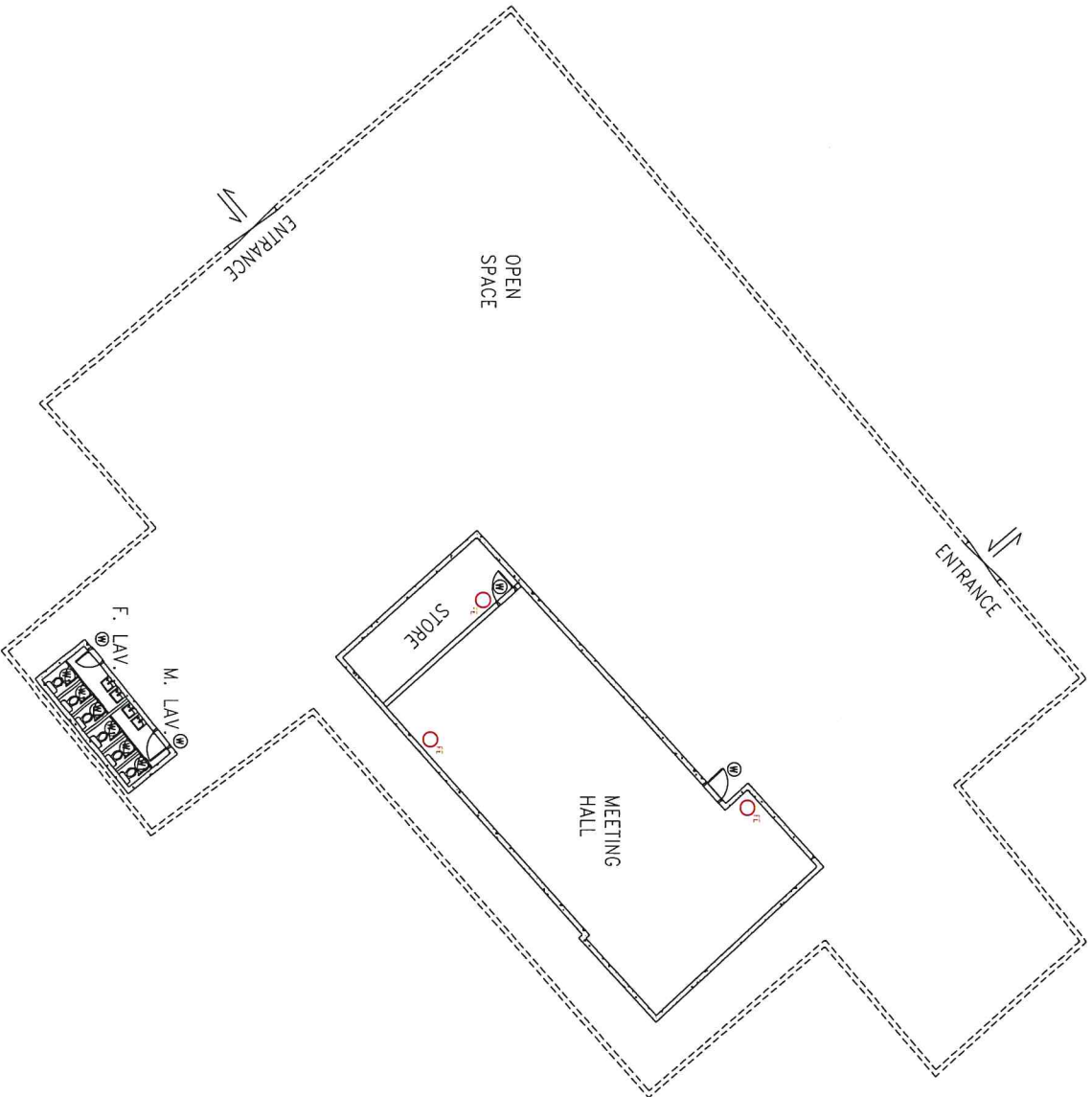


**NOTES:**

1. EXTERNAL LIGHTING TO BE ADJUSTED DEPENDS ON SITE CONDITION SUCH AS CLADDING PATTERN

 <b>CDBM ENGINEERING CONSULTANT COMPANY LIMITED</b> TEL: (852) 2598 1088 FAX: (852) 3020 6998 E-mail: malder@cdbm.hk		REV. NOTES DATE TITLE EMERGENCY LIGHTING LOCATION PLAN SHOP SIGN	PROJECT FIRE SERVICE SYSTEM INSTALLATION AT FORMER HA PAK NAI TSUEN PUBLIC PRIMARY SCHOOL, HA PAK NAI, YUEN LONG, NEW TERRITORIES	SCALE 1:200 PAPER SIZE A3	DRAWN T W CHECKED C W	DWG. NO. FS-01 DATE 07-11-2024	REV. (0) REF. W1293
---	--	--	---	------------------------------------	--------------------------------	---	------------------------------

**LEGEND:**  
 FE CO<sub>2</sub> TYPE FIRE EXTINGUISHER  
 (3 NOS.)



REV. NO.	DATE	TITLE	PROJECT	SCALE	DRAWN	DWG. NO.	REV.
1		FIRE EXTINGUISHER LOCATION PLAN	FIRE SERVICES SYSTEM INSTALLATION AT FORMER HA PAK NAI TSUEN PUBLIC PRIMARY SCHOOL, HA PAK NAI, YUEN LONG, NEW TERRITORIES	1:200	T W	FS-02	(0)
2		SHOP SIGN		PAPER SIZE	CHECKED	DATE	REF.
				A3	C W	07-11-2024	W1293



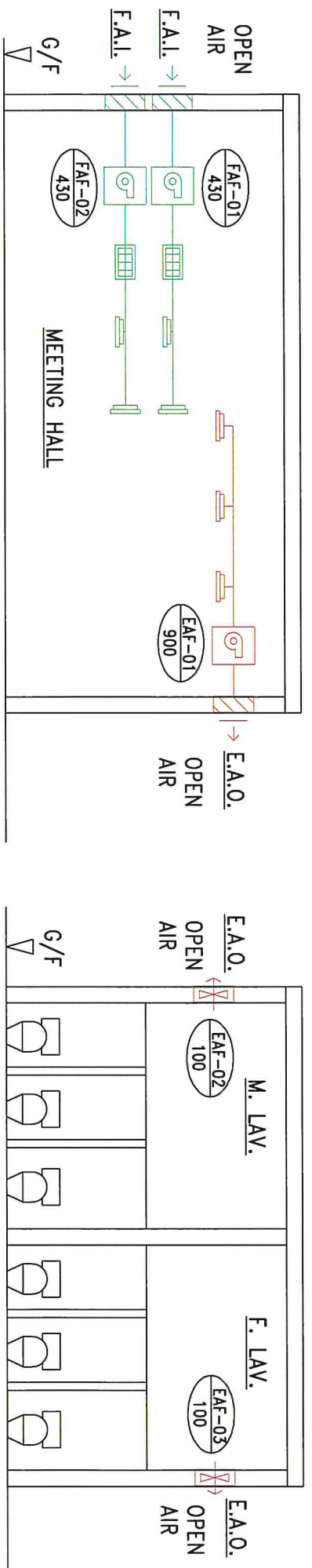
VENTILATION FAN TRIPPING SCHEDULE

ITEM	EQUIPMENT NUMBER	FAN LOCATION	AREA SERVED	FAN TYPE	QTY	FAN CAPACITY (L/s)	VAC CONTROL METHOD	EXEMPTED REASON	PROBE TYPE SMOKE DETECTOR
1	FAF-01	MEETING HALL	MEETING HALL	IN-LINE DUCT	1	430	NO	FS COP 5.27(G) MINOR MV SYSTEM IN SAME COMPARTMENT AND AIR FLOW RATE NOT EXCEED 1000 L/s	
2	FAF-02	MEETING HALL	MEETING HALL	IN-LINE DUCT	1	430	NO	FS COP 5.27(G) MINOR MV SYSTEM IN SAME COMPARTMENT AND AIR FLOW RATE NOT EXCEED 1000 L/s	
3	EAF-01	MEETING HALL	MEETING HALL	IN-LINE DUCT	1	900	NO	FS COP 5.27(G) MINOR MV SYSTEM IN SAME COMPARTMENT AND AIR FLOW RATE NOT EXCEED 1000 L/s	N/A
4	EAF-02	M. LAV.	M. LAV.	PROPELLER	1	100	NO	FS COP 5.27(G) MINOR MV SYSTEM IN SAME COMPARTMENT AND AIR FLOW RATE NOT EXCEED 1000 L/s	
5	EAF-03	F. LAV.	F. LAV.	PROPELLER	1	100	NO	FS COP 5.27(G) MINOR MV SYSTEM IN SAME COMPARTMENT AND AIR FLOW RATE NOT EXCEED 1000 L/s	

**LEGEND:**

- EAF EXHAUST AIR FAN
- FAF FRESH AIR FAN
- E.A.O. EXHAUST AIR OUTLET
- F.A.I. FRESH AIR INTAKE
- EXHAUST AIR DUCT
- FRESH AIR DUCT
- AIR GRILLE
- AIR LOUVER
- IN-LINE DUCT FAN
- PROPELLER FAN
- A = EQUIPMENT NUMBER
- B = FLOW RATE IN L/s

AIR SIDE SCHEMATIC DIAGRAM



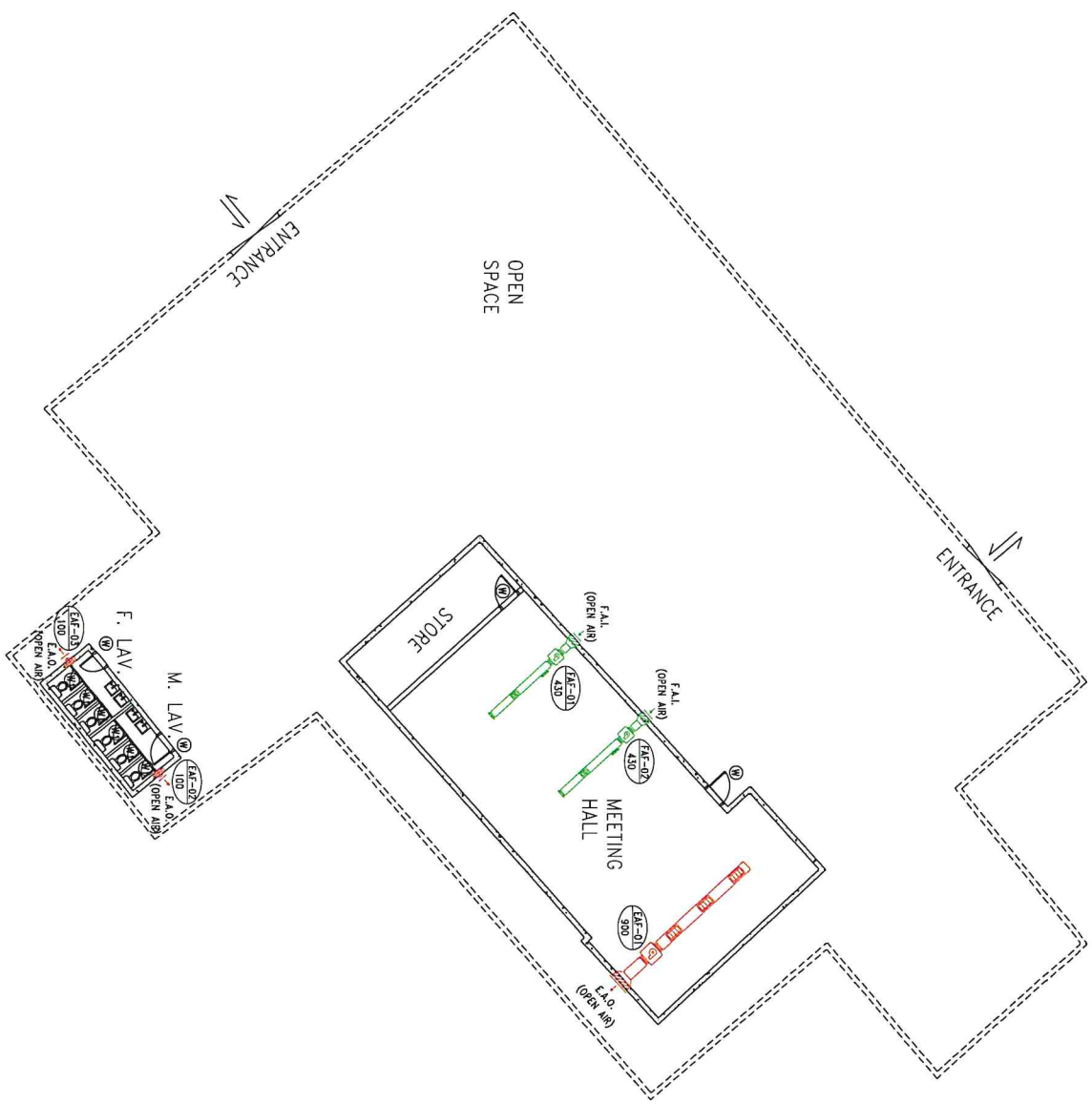
**CBBM ENGINEERING CONSULTANT COMPANY LIMITED**  
 TEL: (952) 2598 1898 FAX: (952) 3020 6998  
 Email: mal@cbbm.com.hk


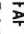
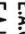




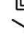



REV. NO.	DATE	TITLE	PROJECT	SCALE	DRAWN	DWG. NO.	REV.
		VENTILATION NOTES, LEGEND, AIR SCHEMATIC & SCHEDULE	FIRE SERVICE SYSTEM INSTALLATION AT FORMER HA PAK NAI TSUEN PUBLIC PRIMARY SCHOOL, HA PAK NAI, YUEN LONG, NEW TERRITORIES	1:200	T W	VS-01	(0)
				PARA SIZE	C W	07-11-2024	W1293

REV. NO.	DATE	TITLE

PROJECT	VENTILATION LAYOUT PLAN
DESCRIPTION	FORMER HA PAK NAI TSUEN PUBLIC PRIMARY SCHOOL, HA PAK NAI, YUEN LONG, NEW TERRITORIES

SCALE	1:200
PAPER SIZE	A3
DRAWN	T W
CHECKED	C W
DWG. NO.	VS-02
DATE	07-11-2024
REV.	(0)
REF.	W1293



- LEGEND:**
-  EXHAUST AIR FAN
  -  FRESH AIR FAN
  -  EXHAUST AIR OUTLET
  -  FRESH AIR INTAKE
  -  EXHAUST AIR DUCT
  -  FRESH AIR DUCT
  -  AIR GRILLE
  -  AIR LOUVER
  -  IN-LINE DUCT FAN
  -  PROPELLER FAN
  -  A = EQUIPMENT NUMBER  
B = FLOW RATE IN L/s

Planning Application No. A/YL-PN/82 補充資料:

1. 本寺院佛舍共有四名員工，一名營運經理(義務)，一名文書聯絡員(義務)及二名駐場打理寺院工友(義務)。
2. 本寺平常每日的訪客約為8-10人。
3. 訪客進入佛寺進行燃香拜佛時，每人只允許燃點一枝香作供佛之用。
4. 當寺院有法事舉行時的當天訪客人數約為50-70人，法事內容通常包括祈福法會，延生普佛法會，超渡先人法會，唱誦經文，誦念佛號，佛學開示(講經)，供養三寶法會，煙供法會，供燈拜願，浴佛法會等。
5. 除煙供法會外，以上法會均會在室內進行，原因是煙供法會所產生的煙會較大，若室內抽風機設備不足夠，都會選擇在室外進行(註：請看附件 - 煙供法會簡介)。
6. 本會不設及不提供燃燒香燭冥鏹衣紙服務紙。

7. 本會在舉行法會期間都會用上小型擴音器，類似一般教師在課堂用的手携式擴音器。
8. 法事通常舉行的時間多為元旦，除夕，新春期間，清明節，盂蘭節，佛誕等。
9. 本會當中有四名董事均為印度藉的藏傳佛教僧人(喇嘛)，他們一般每年來港2-3次為我們本會會員及香港廣大有緣善信主持佛教法事，亦同時為香港祈福祝福。他們每次留港期間均不超過十四日。
10. 本會沒有自己的交通工具，職員本身及本會會員/訪客一般都是搭乘公共交通工具到達後需再徒步到寺院。
11. 寺院一般開放時間為每日上午九時至下午九時，寺院免費開放給本會會員及廣大有緣善信，不需預約。
12. 本會不會改動前下白泥村公立學校的構築物及室內原有間格。
13. 本寺院平常每日的訪客約為8-10人，他們一般都是個人在佛堂內進行燃香拜佛，打坐禪修，誦經念佛，做大禮拜，供燈祈福(請參照附圖供燈)。

14. 超渡先人法會通常都在清明節及盂蘭節期間舉行，此超渡法會完全有別於在殯儀館所做的超渡法事，善信只需將往生的親友姓名寫在超薦蓮位上，再由法師在法會中念經回向(請參照附圖超渡法會登記樣本)。

15. 本寺一直只允許善信在佛堂內燃點一枝『藏香』作供佛之用。本寺院一直不允許及不提供燒高香服務(請參照附圖藏香樣本)。

16. 本會當中的四名董事均為印度藉的藏傳佛教僧人(喇嘛)，他們一般每年來港 2-3 次為我們本會會員及香港廣大有緣善信主持佛教法事，他們每次留港期間均不超過十四日，期間他們會住宿酒店或接受善信的邀請住宿他們提供的住所或在主持法事期間需要住宿寺院。

17. 本會人員與貴署人員於 2024 年 3 月 1 日到現場進行視察，發現構築物有多個處地方如門窗，天花，內外牆身油漆，室外混凝土水缸，供水供電系統出現不同程度損壞/缺失，本會將負責進行執修。

18. 此外，當天未能在屬於廁所設備的構築物進行視察(因該構築物被大量倒塌的粗大樹幹遮蓋)，雖然現時不太了解廁所設備

的實際情況，本會亦將按需要負責進行執修，並按照相關法規處理排污問題。

19. 煙供法會主要是在室外進行，按照過往記錄，每年舉行煙供法會一至二次，每次法會時間約一小時完成。如進行煙供法會前，本會發出通告告知附近居民，歡迎他們一起參加法會，共沾法益。

20. 如本會舉行煙供法會，將在場地範圍內進行。

21. 本會不會移除現有的樹木。

22. 本會一如既往的免費開放給我們的會員及廣大有緣善信到佛寺進行參拜禮佛，打坐靜修，誦經學佛，洗滌心靈，為香港佛教善信提供的宗教服務。但西方寺念佛舍從不提供擺放先人骨灰龕位，神主牌及焚燒冥鏹香燭元寶衣紙服務。

23. 本佛寺一般都在佛教節日舉行法事，內容通常包括祈福法會，延生普佛法會，超渡先人法會，唱誦經文，誦念佛號，佛學開示(講經)，供養三寶法會，煙供法會，供燈拜願，浴佛法會等。這都是佛教的傳統儀式，與在香港的各大佛寺，佛教中心，佛舍等所舉辦的法事無異。

24. 本會當中有四名董事均為印度籍的藏傳佛教僧人(喇嘛)，他們一般每年來港 2-3 次為我們本會會員及香港廣大有緣善信主持佛教法事，每次留港時間均不超過 14 天，因法事準備需時，期間他們亦同時在寺院留宿作息，這安排是一個寺院的附屬用途，本寺主要用途及目標是弘揚佛教慈愛精神，締造和諧社會氛圍，促進宗教服務社會，為社會的宗教發展作出貢獻。註：本會開始營運至今從沒有僧人長期居住在西方寺念佛舍。

## 補充文件 - 第5點附件



煙供是什麼？煙供施食是藏傳佛教(金剛乘)獨有的殊勝法門，在四大藏傳教派中皆有儀軌傳承，以清淨無間斷的傳承加持力與諸佛菩薩慈悲攝受力，可令冤親債主等眾生得受法益，化解冤結；亦可慈悲利益鬼道眾生，令其歡喜受益。

煙供也是對佛法僧(三寶)最上之供物，令三寶歡喜及加持攝受最佳之法。常以妙香供養，必定成就清淨戒體及功德妙用，成辦自他二利事業，最終成就菩提果位。



補充文件 - 第13點附件



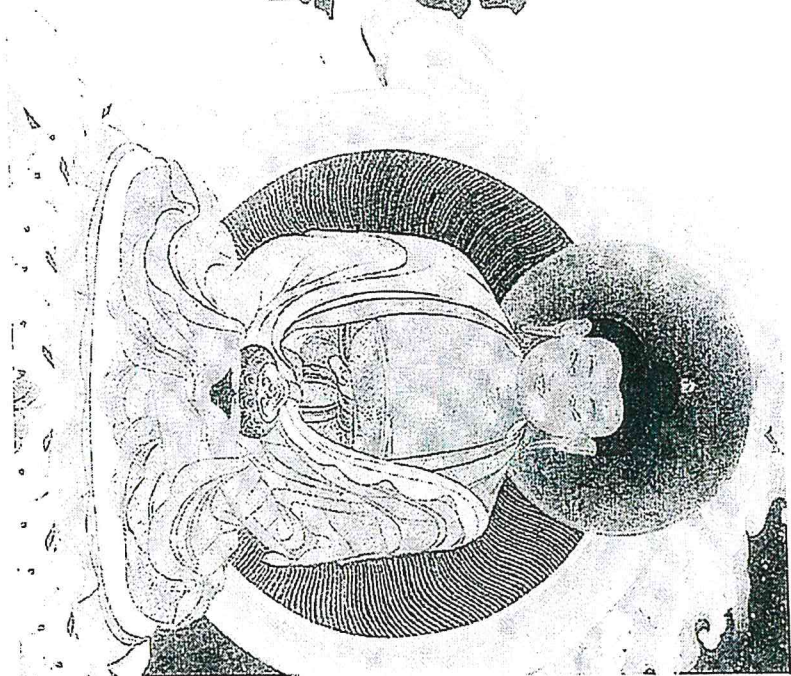
善信在佛堂內供燈祈福

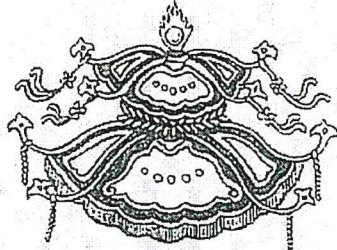
補充文件 - 第14點附件

## 清明節超渡法會

# 阿彌陀佛 超渡法會

歡迎各界踴躍參加



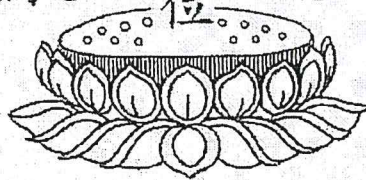


佛力超薦

陽上

往生蓮位

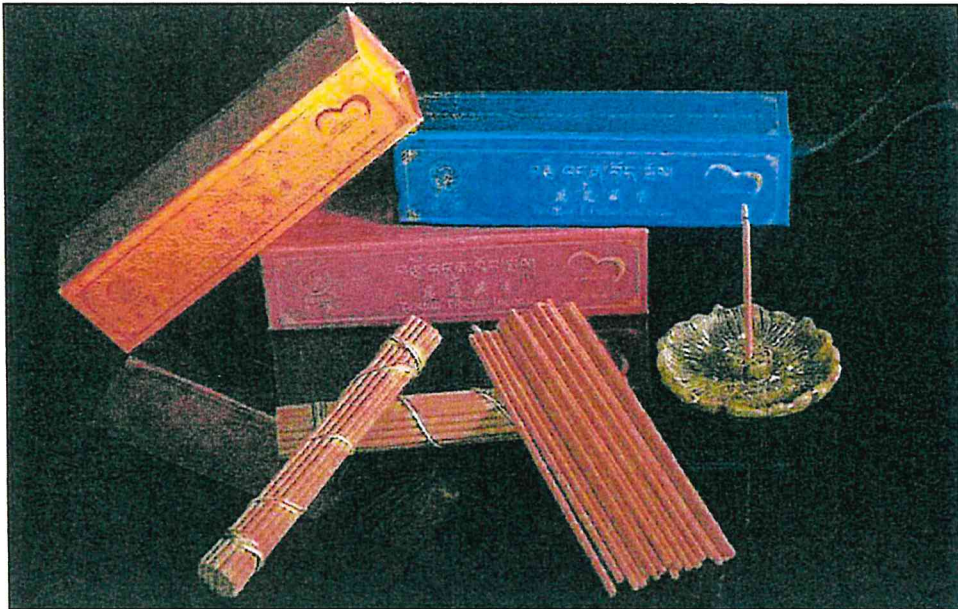
叩薦



補充文件 - 第15點附件



本寺不允許及不提供燒高香服務



本寺只允許善信在佛堂內燃點一枝『藏香』作供佛之用。