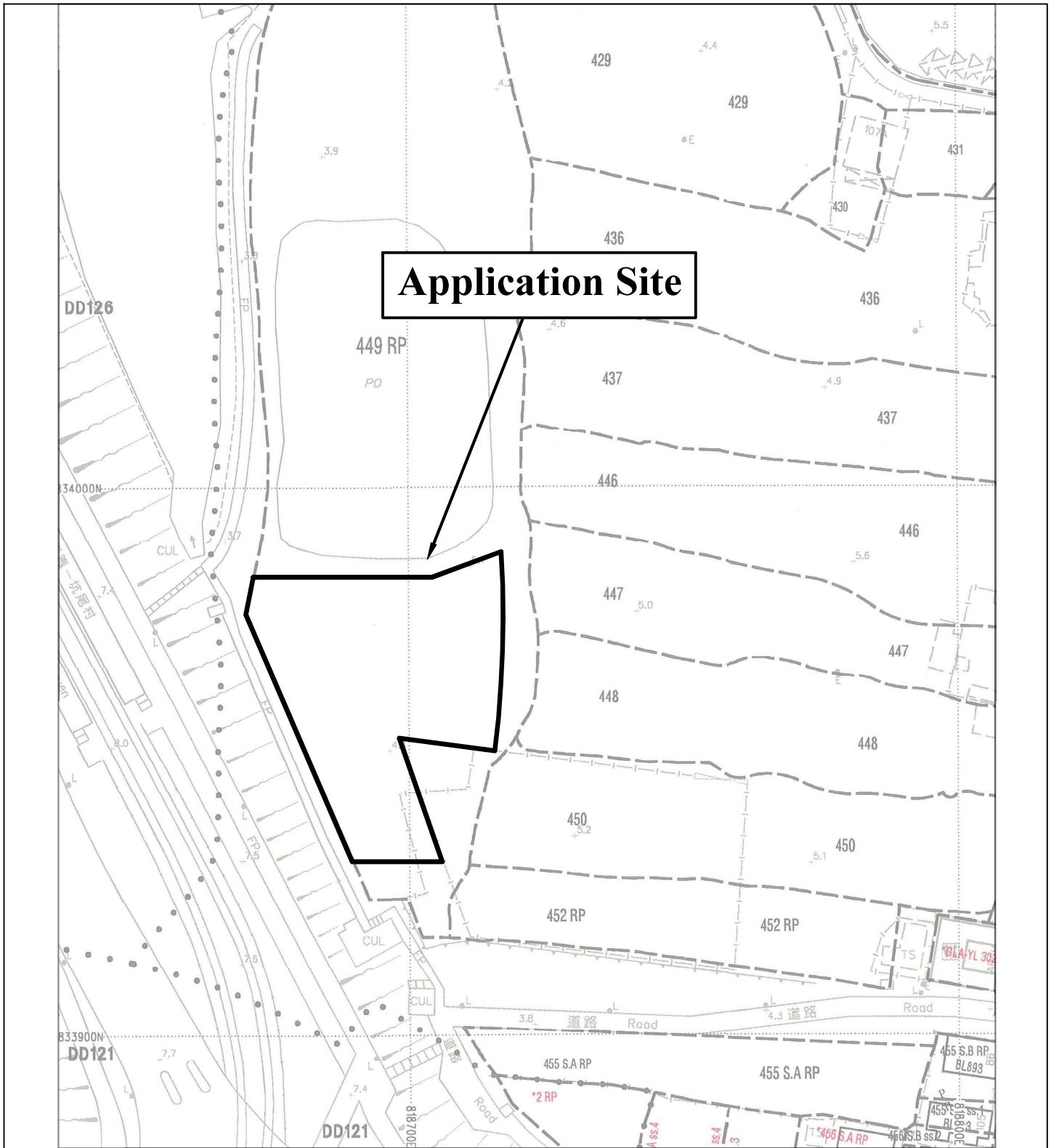


Extracted from Approved Ping Shan Outline Zoning Plan No. S/YL-PS/20

<p>Not to Scale For Identification Purpose Only</p>	<p>Location Plan</p> <p>Lot 449RP(Part) in D. D. 122 Hang Mei Tsuen, Ping Shan, Yuen Long, New Territories</p>	<p>Goldrich Planners & Surveyors Ltd.</p>
<p>November 2024</p>		<p>Plan 1 (P10120)</p>

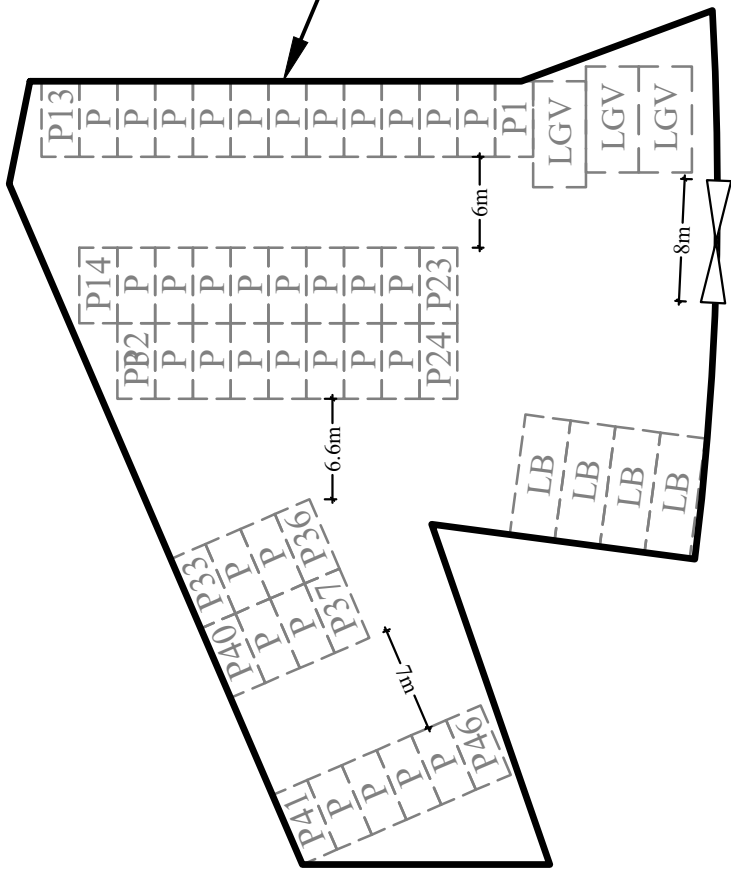


Site Area: (about) 1,689m²

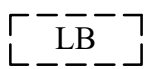

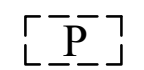
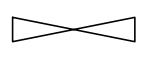
<p>1 : 1000</p>	<p>Lot Index Plan</p>	<p>Goldrich Planners & Surveyors Ltd.</p>
<p>November 2024</p>	<p>Lot 449RP(Part) in D. D. 122 Hang Mei Tsuen, Ping Shan, Yuen Long, New Territories</p>	<p>Plan 2 (P10120)</p>



Application Site



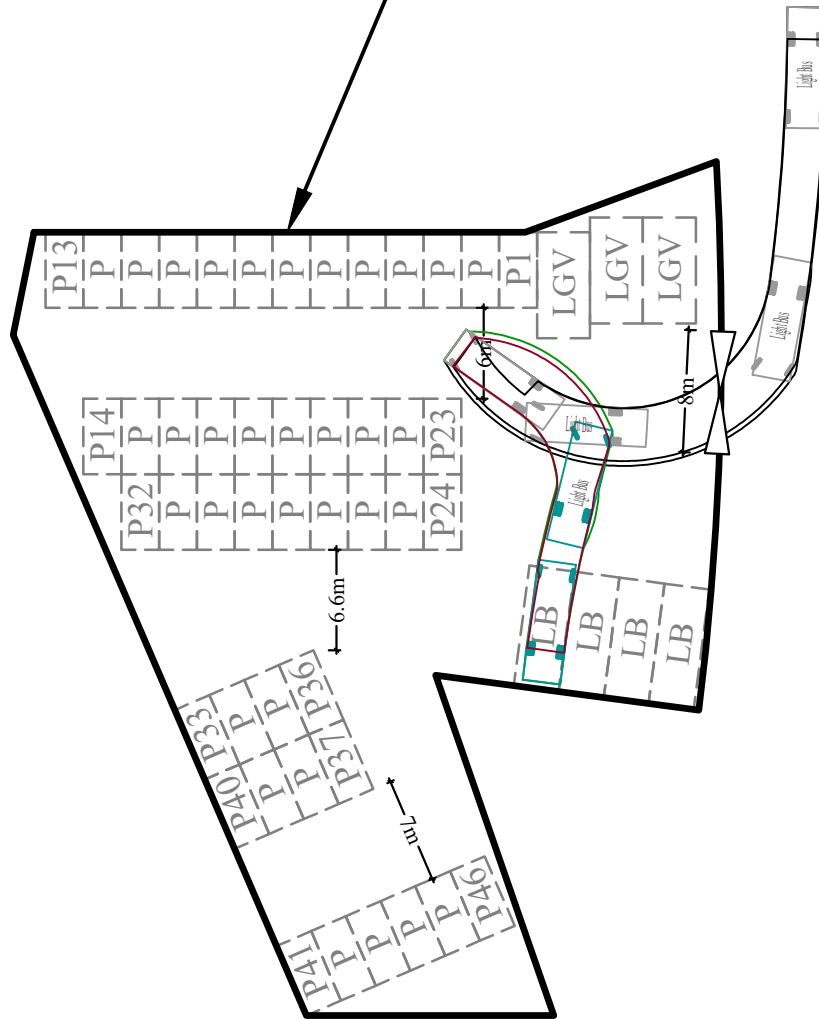
Legend

-  **Parking space for light bus**
(8m (L) x 3m (W))
-  **Parking space for light goods vehicle**
(7m (L) x 3.5m (W))
-  **Parking space for private cars**
(5m (L) x 2.5m (W))
-  **Vehicular Ingress / Egress**

1 : 500	Layout Plan	Goldrich Planners & Surveyors Ltd.
November 2024	Lot 449RP(Part) in D. D. 122 Hang Mei Tsuen, Ping Shan, Yuen Long, New Territories	Plan 3 (P 10120)



Application Site



Legend

- LB
Parking space for light bus
 (8m (L) x 3m (W))

- LGV
Parking space for light goods vehicle
 (7m (L) x 3.5m (W))

- P
Parking space for private cars
 (5m (L) x 2.5m (W))

- Vehicular Ingress / Egress**

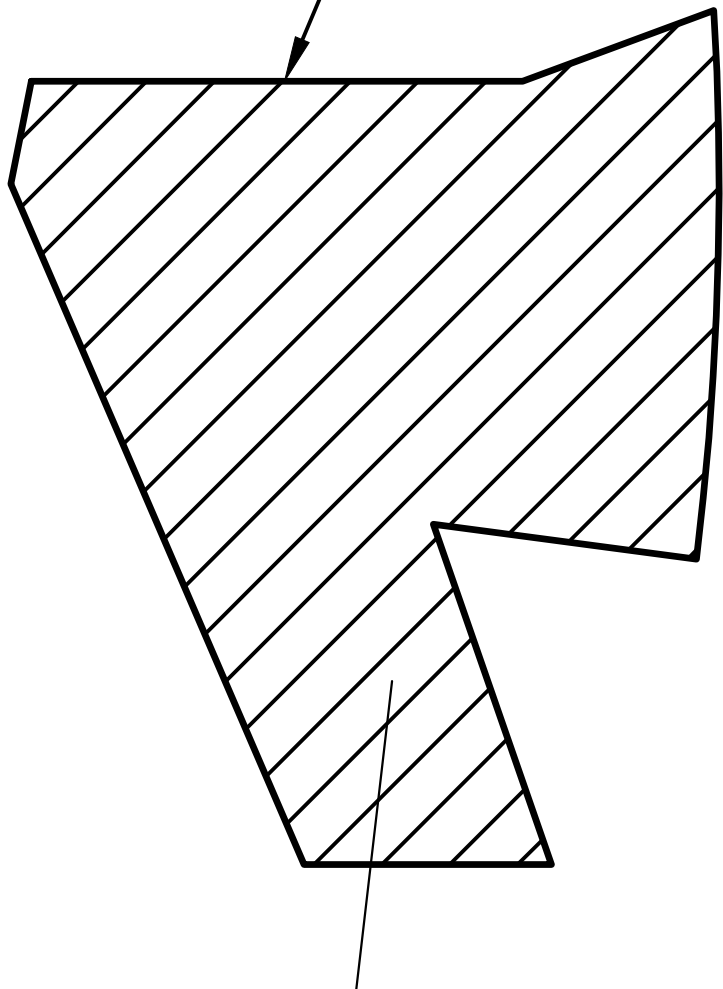
- Light Bus

Light bus
 (8m (L) x 2.5m (W))

1 : 500	Swept Path Analysis	Goldrich Planners & Surveyors Ltd.
November 2024	Lot 449RP(Part) in D. D. 122 Hang Mei Tsuen, Ping Shan, Yuen Long, New Territories	Plan 4 (P 10120)



Application Site



**The whole site (1,689m²) is hard-paved with concrete of about 0.2m in depth.
The current application serves to regularise the existing hard-paving on site.**

1 : 500	Plan Showing Existing Filling of Land	Goldrich Planners & Surveyors Ltd.
December 2024	Lot 449RP(Part) in D. D. 122 Hang Mei Tsuen, Ping Shan, Yuen Long, New Territories	Plan 5 (P 10120)