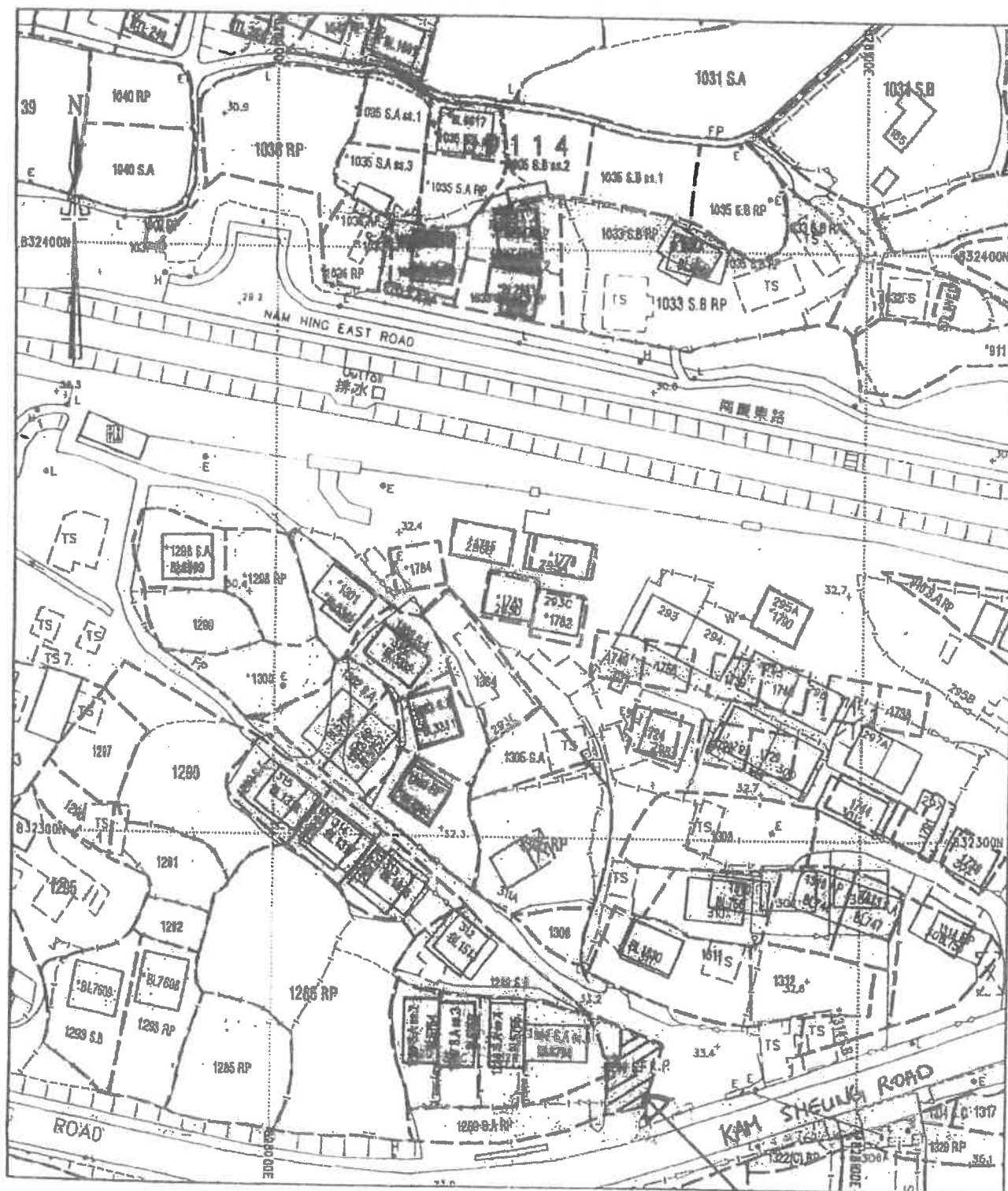


# SITE PLAN LOT INDEX PLAN



Plan produced by SMO, Lands Department.

**Lot 1289 SF RP**

SCALE 1 : 1000

METRES 10 0 10 20 30 40 50 METRES



Locality : DD114

Lot Index Plan No. : 6-NE-19B

District Survey Office : Yuen Long

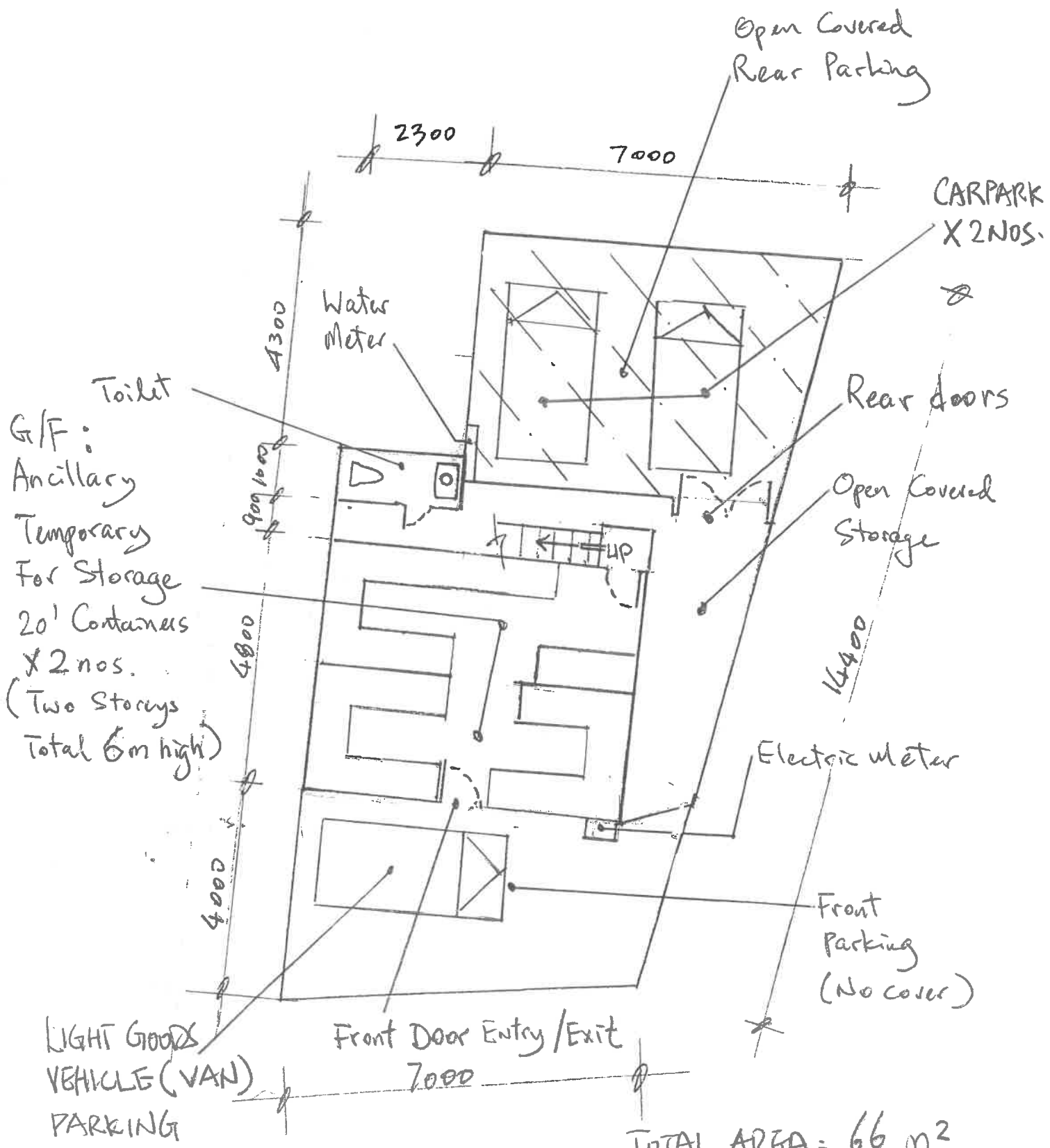
Date : 31 Oct 06

Reference No. : YLLIP/06/10/406

© Copyright reserved - Hong Kong Government

This plan is a copy of the lot index plan which shows the approximate position of lot boundaries. The information shown on this plan **MUST** be verified by field survey. The lot index plan may be revised without prior notification when better lot boundary evidence becomes available. 本圖則為地段索引圖的複印本，旨在展示地段界線的大約位置。本圖則內的資料，必須經實地測量核證。在有較佳地段界線證據的情況下，地段索引圖可隨時

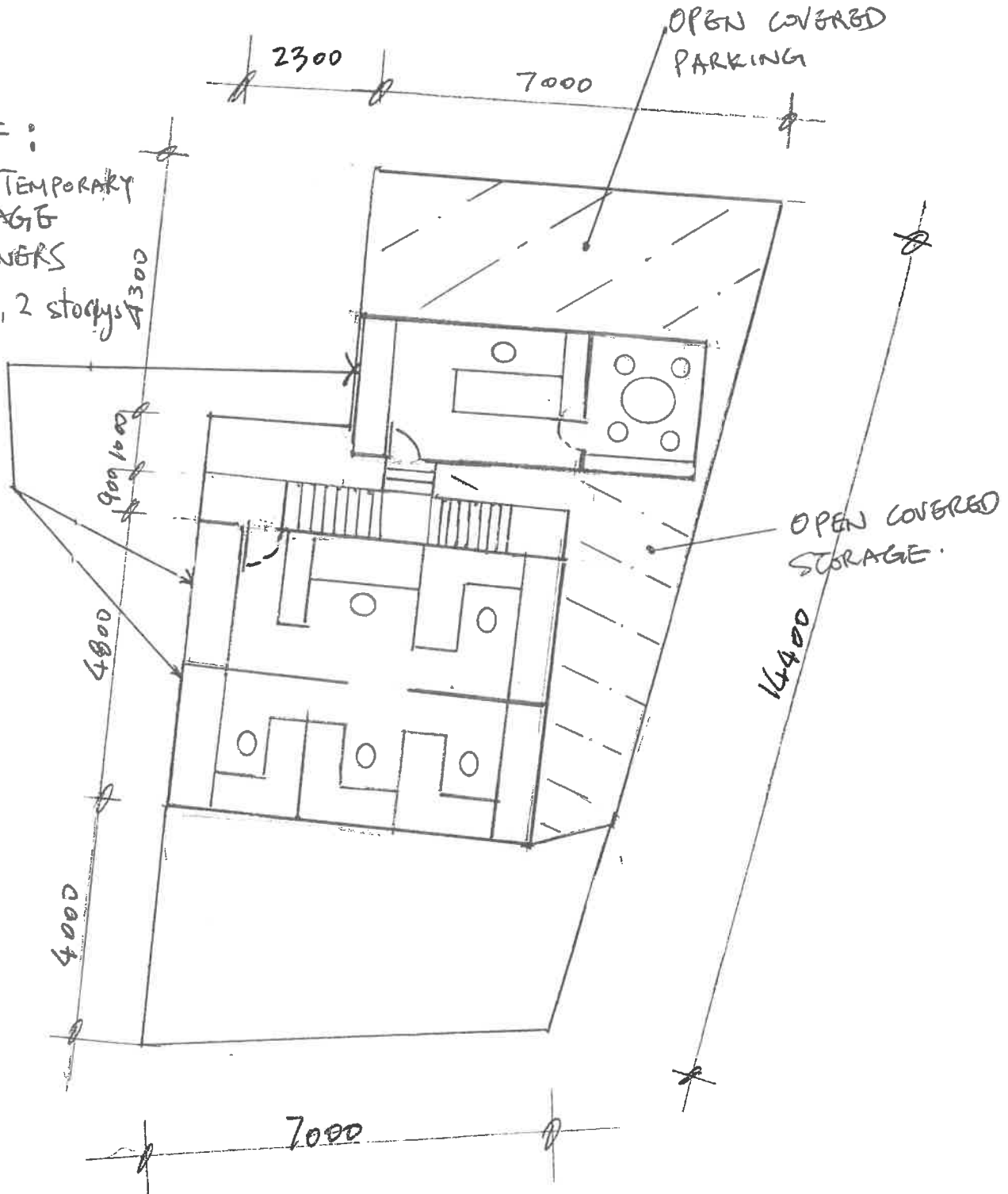




TOTAL AREA = 66 m<sup>2</sup>  
 INCLUDING REAR PARKING

LOWER LEVEL PLAN (N.T.S.)  
PLANNING STUDIES REPORT (PSR)

G/F and 1/F :  
 Ancillary Temporary  
 FOR STORAGE  
 20' CONTAINERS  
 Total 5 nos, 2 storerooms  
 6m high



TOTAL AREA = 48m<sup>2</sup>

LIPPER LEVEL PLAN (N.T.S.)  
PLANNING STUDIES REPORT (PSR1)