

TREE GROUP INSPECTION REPORT FOR

LOT NOS. 992 & 998 S.B SS. 1 IN D.D. 106

Ms. Lee Hiu Wa



ISA Certified Arborist (HK-1104A)

Tree Management Personnel

Registration Scheme

Arborist (TM522127)

Tree Risk Assessor (TM522127)

Tree Work Supervisor (TM522127)

Content

1. Introduction	P. 2
2. Methodology	P. 2
3. General Descriptions on Existing Trees	P. 3
4. Appendix A – Tree Location Plan	P. 4
5. Appendix B – General View	P. 5
6. Appendix C – Tree Survey Schedule	P. 7
7. Appendix D – Tree Photographic Records	P. 11

1. Introduction

The owner was instructed to perform tree inspection service so as to examine the target trees inside the LOT NOS. 992 & 998 S.B SS. 1 IN D.D. 106 This tree group inspection report describes the inspection methodology, the results, Arborist's recommendations and conclusion.

2. Methodology

An ISA Certified Arborist was assigned to conduct a tree inspection at the site on 3 April, 2024.

Thorough visual inspection of the trees was conducted by the Arborists from various vantage points on the ground to examine the subject trees. Within the designated site boundary, all living trees (in some case large tree-form shrubs) with a main trunk equal to or over 95 mm in Diameter at Breast Height (DBH) were included in the tree survey (AFCD Practice Note No. 2 / 2006). Each tree was allocated and tagged with a tree number, and its position was plotted on plans. They were then identified (1) to species, or in some cases to genus if full identification was not possible. Measurements were taken of its trunk diameter, height and spread, with a photograph taken. The report includes the following information on each tree surveyed:

- Tree No. (numbers allocated to individual trees);
- Tree Species Name (Scientific Name and Chinese Name);
- DBH at 1.3m above Ground level (mm);
- Crown spread (m);
- Overall Height (m);
- Amenity Value (High/Medium/Low);
- Form (Good/Fair/Poor);
- Health Condition (Good/Fair/Poor);
- Structural Condition (Good/Fair/Poor);
- Suitability for Transplanting (High/Medium/Low);
- Origin;
- Remarks (special features of particular trees)

3. General Descriptions on Existing Trees

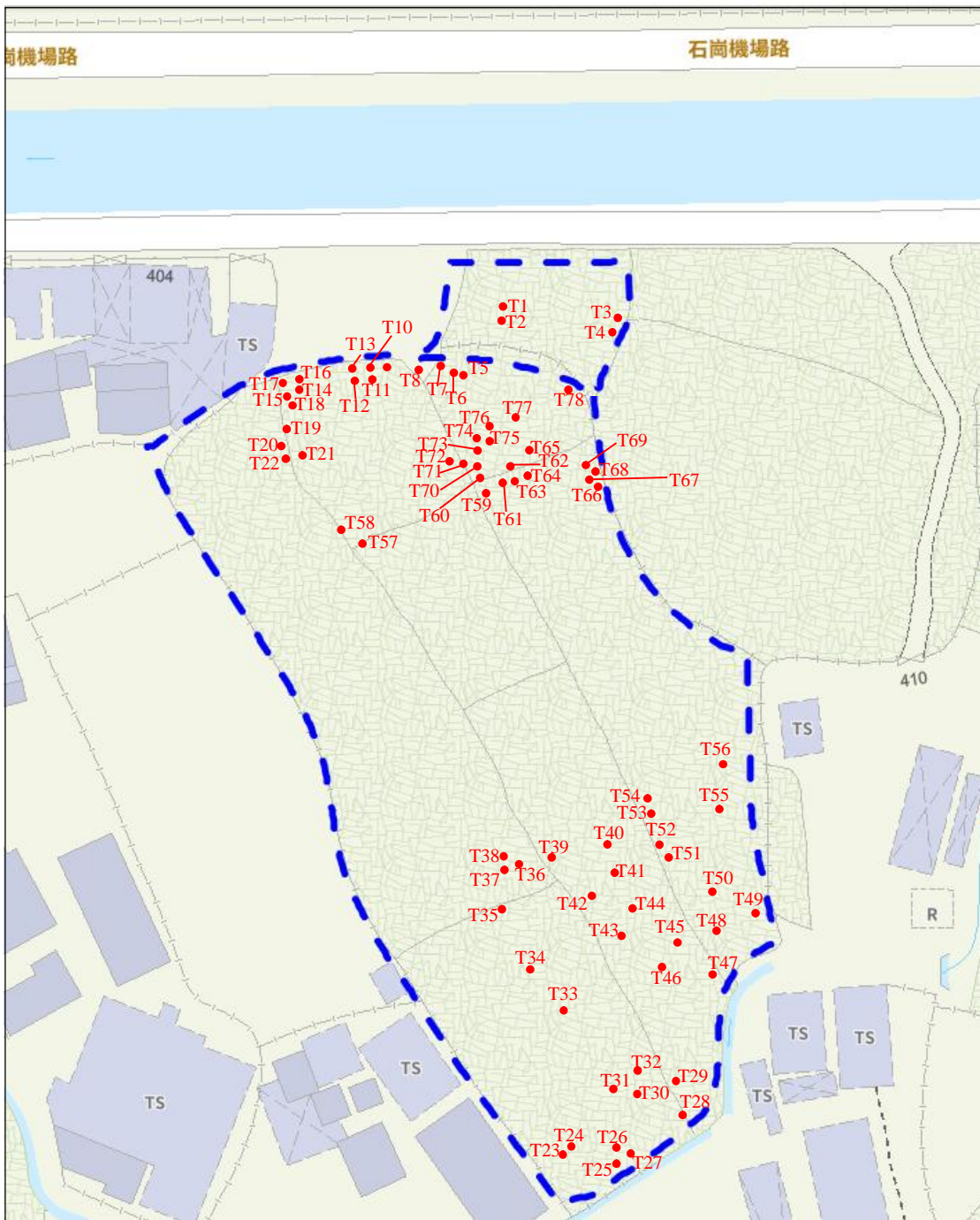
There are 85 trees surveyed in site. For the composition of the surveyed trees, it is composed of 11 species. *Macaranga tanarius* var. *tomentosa* (血桐) was the dominant species with the quantities of 27. More information is shown in the Table 3.1.

Table 3.1: Individual Surveyed Trees Species & Quantities

Scientific Name	Recommendation	Conservation Status	Quantities
<i>Averrhoa carambola</i>	Fell	-	2
<i>Bombax ceiba</i>	Fell	-	1
<i>Bridelia tomentosa</i>	Fell	-	2
<i>Celtis sinensis</i>	Fell	-	1
<i>Dimocarpus longan</i>	Fell	-	5
<i>Ficus hispida</i>	Fell	-	10
<i>Leucaena leucocephala</i>	Fell	-	20
<i>Ligustrum sinense</i>	Fell	-	1
<i>Macaranga tanarius</i> var. <i>tomentosa</i>	Fell	-	27
<i>Mangifera indica</i>	Fell	-	8
<i>Melia azedarach</i> L.	Fell	-	8
Total Quantity of Surveyed Trees:			85

Please refer to Appendix A for Tree Location Plan, Appendix B for General View, Appendix C for Tree Survey Schedule and Appendix D for Tree Photographic Records.

Appendix A – Tree Location Plan



Appendix B – General View





Appendix C – Tree Survey Schedule

Location: Lot nos. 992 & 998 S.B ss.1 in D.D. 106

Date of Inspection: 2023/04/03

Surveyed by: LEE HIU WA

Tree No.	Tree Species		Tree Size Measurement			Amenity Value (High / Medium /Low)	Form (Good/ Fair/ Poor)	Health Condition (Good / Fair / Poor /Dead)	Structural Condition (Good/ Fair/ Poor)	Suitability for Transplanting	Origin	Remarks
	Scientific Name	Chinese Name	DBH(mm)	Overall Height (m)	Crown Spread (m)					(High/ Medium/ Low)		
T1	<i>Celtis sinensis</i>	朴樹	490	12	10	Low	Fair	Fair	Fair	Low	Native	wound (trunk),vine
T2	<i>Ligustrum sinense</i>	山指甲	152	4	4	Low	Fair	Fair	Fair	Low	Exotic	Epicomics
T3	<i>Leucaena leucocephala</i>	銀合歡	107	8	3	Low	Fair	Poor	Fair	Low	Exotic	sparse
T4	<i>Leucaena leucocephala</i>	銀合歡	105	8	3	Low	Poor	Poor	Poor	Low	Exotic	lean, sparse
T5	<i>Macaranga tanarius var. tomentosa</i>	血桐	116	6	1	Low	Poor	Poor	Poor	Low	Native	wound (trunk), dead tree
T6	<i>Macaranga tanarius var. tomentosa</i>	血桐	142	6	3	Low	Poor	Poor	Poor	Low	Native	wound (trunk), dead tree
T7	<i>Macaranga tanarius var. tomentosa</i>	血桐	148	6	3	Low	Poor	Poor	Poor	Low	Native	wound (trunk), lean, sparse, vine
T8	<i>Melia azedarach L.</i>	苦楝	130	4	3	Low	Poor	Poor	Poor	Low	Exotic	lean, root restriction, sparse
T9	<i>Macaranga tanarius var. tomentosa</i>	血桐	190	4	3	Low	Fair	Poor	Fair	Low	Native	wound (trunk), lean, vine, sparse
T10	<i>Macaranga tanarius var. tomentosa</i>	血桐	99	3	3	Low	Fair	Poor	Fair	Low	Native	wound (trunk), topping, vine, sparse
T11	<i>Macaranga tanarius var. tomentosa</i>	血桐	138	7	3	Low	Fair	FaiPr	Fair	Low	Native	wound (trunk), vine, sparse
T12	<i>Macaranga tanarius var. tomentosa</i>	血桐	165	7	4	Low	Poor	Poor	Poor	Low	Native	wound (trunk), vine, dead tree
T13	<i>Macaranga tanarius var. tomentosa</i>	血桐	123	8	1	Low	Poor	Poor	Poor	Low	Native	wound (trunk), vine, dead tree
T14	<i>Macaranga tanarius var. tomentosa</i>	血桐	90 + 105	6	4	Low	Fair	Fair	Fair	Low	Native	wound (trunk), uprooting, vine
T15	<i>Leucaena leucocephala</i>	銀合歡	109	6	2	Low	Fair	Poor	Fair	Low	Exotic	sparse
T16	<i>Macaranga tanarius var. tomentosa</i>	血桐	79 + 100 + 128	6	4	Low	Fair	Fair	Fair	Low	Native	wound(trunk), root restriction, multi-trunks, sparse
T17	<i>Macaranga tanarius var. tomentosa</i>	血桐	123	6	1	Low	Poor	Poor	Poor	Low	Native	lean, dead tree
T18	<i>Leucaena leucocephala</i>	銀合歡	108	8	2	Low	Poor	Poor	Poor	Low	Exotic	wound (trunk), dead tree
T19	<i>Melia azedarach L.</i>	苦楝	261	15	8	Low	Fair	Fair	Fair	Low	Exotic	wound(trunk) , dead branches
T20	<i>Leucaena leucocephala</i>	銀合歡	111	5	2	Low	Poor	Poor	Poor	Low	Exotic	wound , lean, dead tree
T21	<i>Leucaena leucocephala</i>	銀合歡	100	5	2	Low	Poor	Poor	Poor	Low	Exotic	wound (trunk), dead tree
T22	<i>Melia azedarach L.</i>	苦楝	340	15	10	Low	Fair	Fair	Fair	Low	Exotic	wound (trunk), codominant trunks
T23	<i>Dimocarpus longan</i>	龍眼	104+110+112	3	5	Low	Fair	Poor	Fair	Low	Exotic	sparse

Appendix C – Tree Survey Schedule

Location: Lot nos. 992 & 998 S.B ss.1 in D.D. 106

Date of Inspection: 2023/04/03

Surveyed by: LEE HIU WA

Tree No.	Tree Species		Tree Size Measurement			Amenity Value (High / Medium /Low)	Form (Good/ Fair/ Poor)	Health Condition (Good / Fair / Poor /Dead)	Structural Condition (Good/ Fair/ Poor)	Suitability for Transplanting	Origin	Remarks
	Scientific Name	Chinese Name	DBH(mm)	Overall Height (m)	Crown Spread (m)					(High/ Medium/ Low)		
T24	<i>Dimocarpus longan</i>	龍眼	97+130	4	5	Low	Fair	Poor	Fair	Low	Exotic	sparse
T25	<i>Dimocarpus longan</i>	龍眼	98	3	4	Low	Fair	Poor	Fair	Low	Exotic	sparse
T26	<i>Ficus hispida</i>	對葉榕	111	4	3	Low	Fair	Poor	Fair	Low	Native	sparse
T27	<i>Ficus hispida</i>	對葉榕	97	3	2	Low	Fair	Poor	Fair	Low	Native	bent(trunk), vine, sparse
T28	<i>Mangifera indica</i>	杧果	430	15	9	Low	Fair	Fair	Fair	Low	Exotic	lean, included bark
T29	<i>Averrhoa carambola</i>	楊桃	105	3	4	Low	Poor	Fair	Poor	Low	Exotic	wound (trunk), vince, sparse
T30	<i>Averrhoa carambola</i>	楊桃	107	3	4	Low	Fair	Fair	Fair	Low	Exotic	vince, sparse
T31	<i>Ficus hispida</i>	對葉榕	162	5	4	Low	Fair	Fair	Fair	Low	Native	codominant trunks, vine
T32	<i>Ficus hispida</i>	對葉榕	100	6	5	Low	Fair	Fair	Fair	Low	Native	codominant trunks, vine
T33	<i>Bombax ceiba</i>	木棉	167	4	1	Low	Poor	Poor	Poor	Low	Exotic	topping, dead tree
T34	<i>Melia azedarach L.</i>	苦楝	100	4	1	Low	Poor	Poor	Poor	Low	Exotic	dead tree
T35	<i>Macaranga tanarius var. tomentosa</i>	血桐	105	4	4	Low	Fair	Fair	Fair	Low	Native	bent(trunk), dead branches, root exposed
T36	<i>Melia azedarach L.</i>	苦楝	155	7	3	Low	Fair	Poor	Fair	Low	Exotic	lean, sparse, vine
T37	<i>Melia azedarach L.</i>	苦楝	143	6	2	Low	Fair	Poor	Fair	Low	Exotic	wound , sparse, vine
T38	<i>Melia azedarach L.</i>	苦楝	110	2	4	Low	Poor	Poor	Poor	Low	Exotic	wound (trunk), lean, dead tree
T39	<i>Ficus hispida</i>	對葉榕	85+90+108+118	7	5	Low	Fair	Fair	Fair	Low	Native	lean, multi-trunks
T40	<i>Ficus hispida</i>	對葉榕	85+90+108+118	7	4	Low	Fair	Fair	Fair	Low	Native	codominant trunks, vine
T41	<i>Ficus hispida</i>	對葉榕	75+95	8	3	Low	Fair	Fair	Fair	Low	Native	codominant trunks
T42	<i>Ficus hispida</i>	對葉榕	78+85	7	3	Low	Fair	Fair	Fair	Low	Native	Epicomics, codominant trunk
T43	<i>Ficus hispida</i>	對葉榕	112	7	3	Low	Fair	Poor	Fair	Low	Native	sparse
T44	<i>Mangifera indica</i>	杧果	110+130+148+156 +188+350	14	8	Low	Fair	Fair	Fair	Low	Exotic	multi-trunks
T45	<i>Mangifera indica</i>	杧果	95+180	11	4	Low	Fair	Fair	Fair	Low	Exotic	
T46	<i>Mangifera indica</i>	杧果	225+235+263	19	10	Low	Fair	Fair	Fair	Low	Exotic	multi-trunks, vine, dead branches

Appendix C – Tree Survey Schedule

Location: Lot nos. 992 & 998 S.B ss.1 in D.D. 106

Date of Inspection: 2023/04/03

Surveyed by: LEE HIU WA

Tree No.	Tree Species		Tree Size Measurement			Amenity Value (High / Medium /Low)	Form (Good/ Fair/ Poor)	Health Condition (Good / Fair / Poor /Dead)	Structural Condition (Good/ Fair/ Poor)	Suitability for Transplanting (High/ Medium/ Low)	Origin	Remarks
	Scientific Name	Chinese Name	DBH(mm)	Overall Height (m)	Crown Spread (m)							
T47	<i>Mangifera indica</i>	杧果	148+245+420	14	10	Low	Fair	Fair	Fair	Low	Exotic	multi-trunks, vine
T48	<i>Mangifera indica</i>	杧果	143+238	14	7	Low	Fair	Fair	Fair	Low	Exotic	multi-trunks, vine
T49	<i>Mangifera indica</i>	杧果	83+107+119	7	4	Low	Fair	Fair	Fair	Low	Exotic	multi-trunks
T50	<i>Mangifera indica</i>	杧果	176+208+210 +213+260	14	10	Low	Fair	Fair	Fair	Low	Exotic	multi-trunks
T51	<i>Macaranga tanarius var. tomentosa</i>	血桐	114	8	4	Low	Fair	Fair	Fair	Low	Native	wound(trunk)
T52	<i>Macaranga tanarius var. tomentosa</i>	血桐	75+105	6	4	Low	Poor	Fair	Poor	Low	Native	wound (trunk), lean
T53	<i>Macaranga tanarius var. tomentosa</i>	血桐	120	4	3	Low	Fair	Poor	Fair	Low	Native	wound (trunk), vine, sparse
T54	<i>Bridelia tomentosa</i>	土蜜樹	70+87+95	3	4	Low	Poor	Poor	Poor	Low	Native	dead tree, vine
T55	<i>Dimocarpus longan</i>	龍眼	150+235	4	5	Low	Fair	Fair	Fair	Low	Exotic	vine
T56	<i>Dimocarpus longan</i>	龍眼	110+170+178	4	5	Low	Fair	Fair	Fair	Low	Exotic	vine
T57	<i>Macaranga tanarius var. tomentosa</i>	血桐	172	4	3	Low	Fair	Fair	Fair	Low	Native	lean, vine
T58	<i>Macaranga tanarius var. tomentosa</i>	血桐	138	5	4	Low	Poor	Poor	Poor	Low	Native	dead tree, vine
T59	<i>Leucaena leucocephala</i>	銀合歡	145	3	2	Low	Poor	Poor	Poor	Low	Exotic	lean, stub, wood, uprooting, vine, sparse
T60	<i>Macaranga tanarius var. tomentosa</i>	血桐	100	5	2	Low	Fair	Poor	Fair	Low	Native	wound (trunk), vine, sparse
T61	<i>Leucaena leucocephala</i>	銀合歡	101	4	1	Low	Fair	Poor	Fair	Low	Exotic	topping, vine, sparse
T62	<i>Leucaena leucocephala</i>	銀合歡	118	5	2	Low	Poor	Poor	Poor	Low	Exotic	wound (trunk), lean, vine, sparse
T63	<i>Leucaena leucocephala</i>	銀合歡	113	5	3	Low	Fair	Poor	Fair	Low	Exotic	wound (trunk),vine, sparse
T64	<i>Leucaena leucocephala</i>	銀合歡	100	6	3	Low	Poor	Fair	Poor	Low	Exotic	wound(trunk), lean, topping, vine
T65	<i>Macaranga tanarius var. tomentosa</i>	血桐	105	3	4	Low	Poor	Fair	Poor	Low	Native	wound (trunk), lean, vine
T66	<i>Leucaena leucocephala</i>	銀合歡	164	6	3	Low	Fair	Fair	Fair	Low	Exotic	vine
T67	<i>Leucaena leucocephala</i>	銀合歡	112	2	3	Low	Poor	Poor	Poor	Low	Exotic	lean, topping, vine, sparse
T68	<i>Leucaena leucocephala</i>	銀合歡	139	3	1	Low	Poor	Poor	Poor	Low	Exotic	lean, topping, vine, sparse
T69	<i>Leucaena leucocephala</i>	銀合歡	185	7	3	Low	Poor	Poor	Poor	Low	Exotic	lean, stubs, topping, vine, sparse

Appendix C – Tree Survey Schedule

Location: Lot nos. 992 & 998 S.B ss.1 in D.D. 106

Date of Inspection: 2023/04/03

Surveyed by: LEE HIU WA

Tree No.	Tree Species		Tree Size Measurement			Amenity Value (High / Medium /Low)	Form (Good/ Fair/ Poor)	Health Condition (Good / Fair / Poor /Dead)	Structural Condition (Good/ Fair/ Poor)	Suitability for Transplanting	Origin	Remarks
	Scientific Name	Chinese Name	DBH(mm)	Overall Height (m)	Crown Spread (m)					(High/ Medium/ Low)		
T70	<i>Macaranga tanarius var. tomentosa</i>	血桐	120	7	3	Low	Fair	Poor	Fair	Low	Native	wound (trunk), sparse, vine, bent(trunk)
T71	<i>Leucaena leucocephala</i>	銀合歡	145	8	3	Low	Fair	Poor	Fair	Low	Exotic	wound (trunk), vine
T72	<i>Macaranga tanarius var. tomentosa</i>	血桐	70+77+93+101	5	3	Low	Poor	Poor	Poor	Low	Native	lean, vine, multi-branches, sparse
T73	<i>Macaranga tanarius var. tomentosa</i>	血桐	120	4	4	Low	Poor	Poor	Poor	Low	Native	wound (trunk), epicomics trunks, lean,vine, sparse
T74	<i>Macaranga tanarius var. tomentosa</i>	血桐	100	5	2	Low	Poor	Poor	Poor	Low	Native	wound (trunk), epicomics trunks, vine, sparse
T75	<i>Macaranga tanarius var. tomentosa</i>	血桐	68+70+88+88	4	4	Low	Poor	Poor	Poor	Low	Native	wound (trunk), lean, vine, sparse, uprooting
T76	<i>Leucaena leucocephala</i>	銀合歡	110	4	4	Low	Poor	Poor	Poor	Low	Exotic	wound (trunk), sparse, lean
T77	<i>Macaranga tanarius var. tomentosa</i>	血桐	63+88+90+105	4	2	Low	Fair	Poor	Fair	Low	Native	wound (trunk), crown thing, dead branches
T78	<i>Leucaena leucocephala</i>	銀合歡	58+70+90	5	4	Low	Poor	Poor	Poor	Low	Exotic	cross branches, bent(trunk), sparse
T79	<i>Macaranga tanarius var. tomentosa</i>	血桐	123	4		Low	Fair	Poor	Fair	Low	Native	wound (trunk), bent(trunk), sparse
T80	<i>Leucaena leucocephala</i>	銀合歡	118	4	3	Low	Fair	Poor	Fair	Low	Exotic	wound (trunk), sparse, bent(trunk)
T81	<i>Macaranga tanarius var. tomentosa</i>	血桐	120	5	2	Low	Fair	Poor	Fair	Low	Native	wound (trunk), lean, sparse, uprooting
T82	<i>Macaranga tanarius var. tomentosa</i>	血桐	120	5	4	Low	Poor	Poor	Poor	Low	Native	wound (trunk), lean, uprooting
T83	<i>Leucaena leucocephala</i>	銀合歡	96	5	1	Low	Fair	Poor	Fair	Low	Exotic	vine
T84	<i>Melia azedarach L.</i>	苦楝	160	4	1	Low	Poor	Poor	Poor	Low	Exotic	wound (trunk), topping, dead tree, vine
T85	<i>Ficus hispida</i>	對葉榕	73+96	5	3	Low	Fair	Poor	Fair	Low	Native	wound (trunk), sparse

Appendix D–Tree Photographic Records



T1



T1



T1



T1



T2



T2



T2



T2



T3



T3



T3



T3



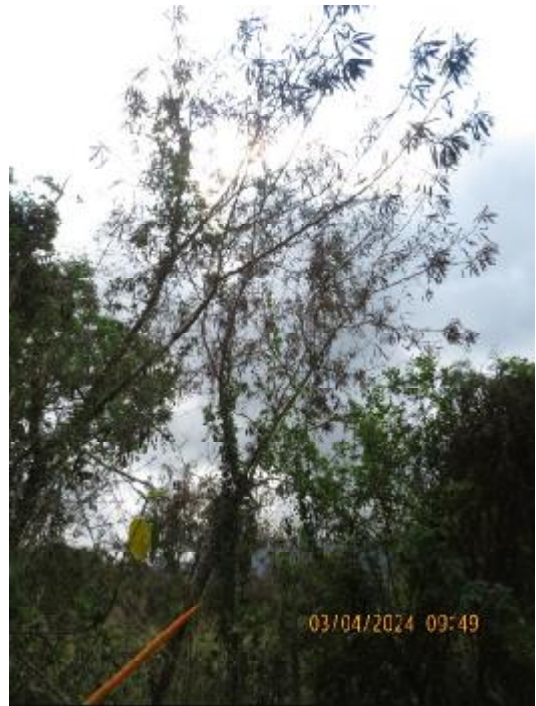
T4



T4



T4



T4



T5



T5



T5



T5



T6



T6



T6



T6



T7



T7



T7



T7



T8



T8



T8



T8



T9



T9



T9



T9



T10



T10



T10



T10



T11



T11



T11



T11



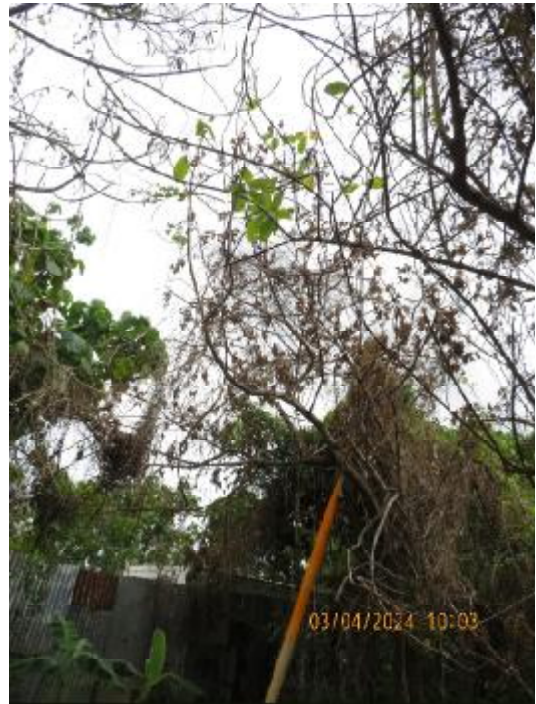
T12



T12



T12



T12



T13



T13



T13



T13



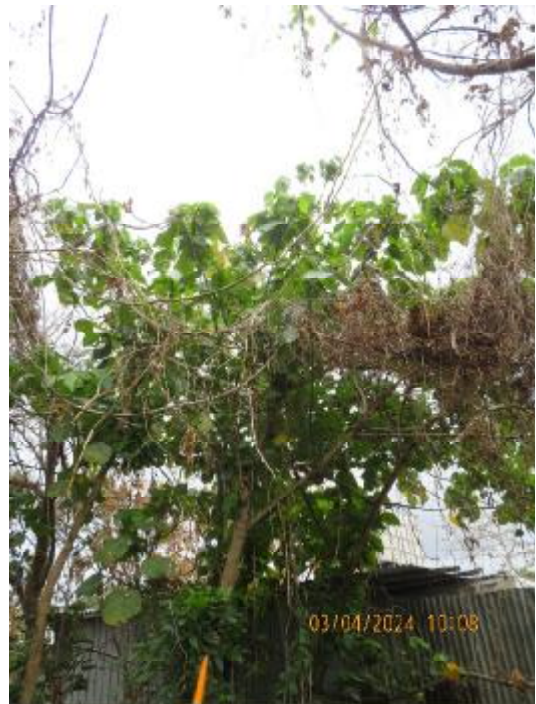
T14



T14



T14



T14



T15



T15



T15



T15



T16



T16



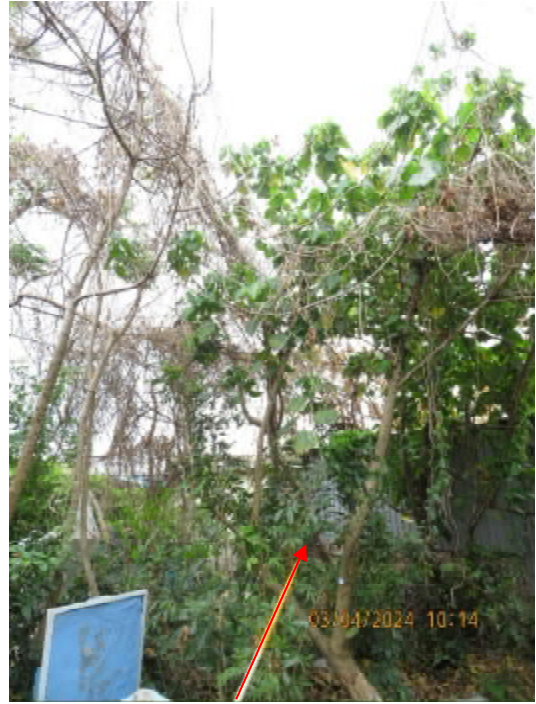
T16



T16



T17



T17



T17



T17



T18



T18



T18



T18



T19



T19



T19



T19



T20



T20



T20



T20



T21



T21



T21



T21



T22



T22



T22



T22



T23



T23



T23



T23



T24



T24



T24



T24



T25



T25



T25



T25



T26



T26



T26



T26



T27



T27



T27



T28



T28



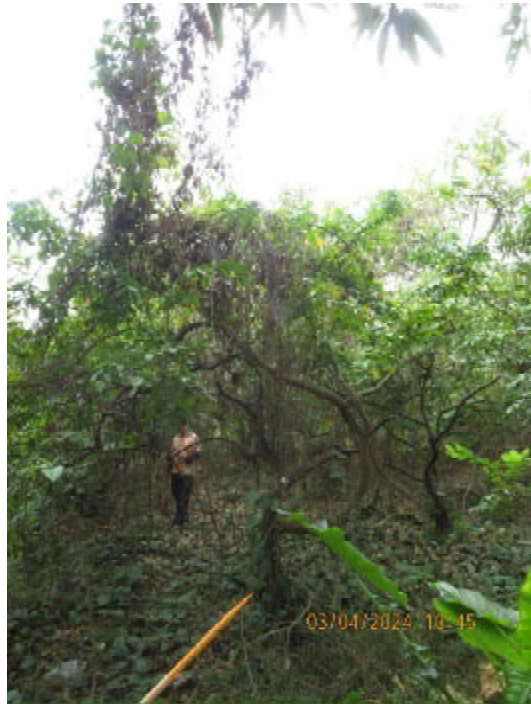
T28



T28



T29



T29



T29



T29



T30



T30



T30



T30



T31



T31



T31



T31



T32



T32



T32



T32



T33



T33



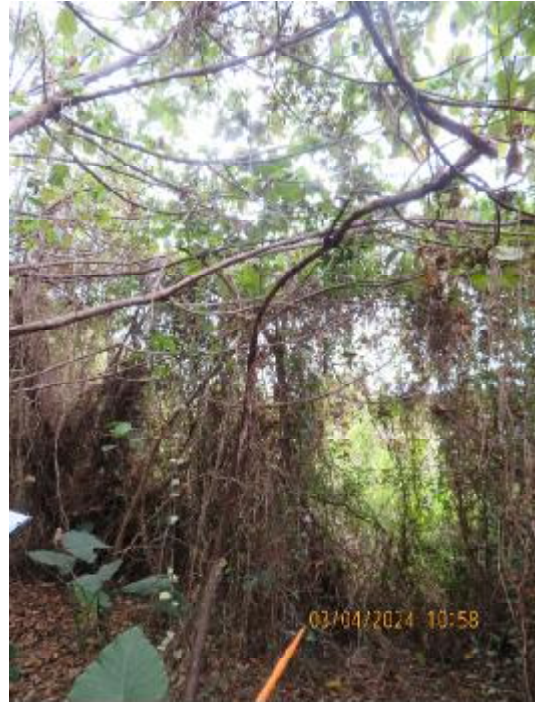
T33



T33



T34



T34



T34



T34



T35



T35



T35



T36



T36



T36



T36



T37



T37



T37



T37



T38



T38



T38



T38



T39



T39



T39



T40



T40



T40



T40



T41



T41



T41



T42



T42



T42



T42



T43



T43



T43



T44



T44



T44



T44



T45



T45



T45



T46



T46



T46



T46



T47



T47



T47



T47



T48



T48



T48



T48



T49



T49



T49



T50



T50



T50



T51



T51



T51



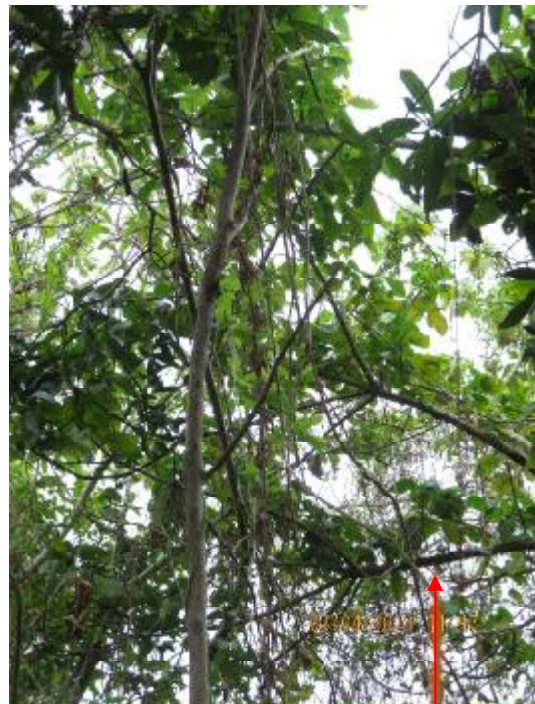
T52



T52



T52



T52



T53



T53



T53



T53



T54



T54



T54



T54



T55



T55



T55



T55



T56



T56



T56



T56

T56



T57



T57



T57



T57



T58



T58



T58



T58



T59



T59



T59



T60



T60



T60



T60



T61



T61



T61



T61



T62



T62



T62



T62



T63



T63



T63



T63



T64



T64



T64



T64

T64



T65



T65



T65



T65



T66



T66



T66



T66



T67



T67



T67



T67



T68



T68



T68



T68



T69



T69



T69



T69



T70



T70



T70



T70



T71



T71



T71



T72



T72



T72



T72



T73



T73



T73



T74



T74



T74



T74



T75



T75



T75



T75



T76



T76



T76



T76



T77



T77



T77



T78



T78



T78



T78



T79



T79



T79



T79



T80



T80



T80



T80



T81



T81



T81



T81



T82



T82



T82



T82



T83



T83



T83



T83



T84



T84



T84



T84



T85



T85



T85



T85

Compensatory Planting Proposal

DD106 lot 992 & 998 S.B ss. 1

Ms. Lee Hiu Wa



ISA Certified Arborist (HK-1104A)

Tree Management Personnel Registration Scheme

Arborist (TM522127)

Tree Risk Assessor (TM522127)

Tree Work Supervisor (TM522127)

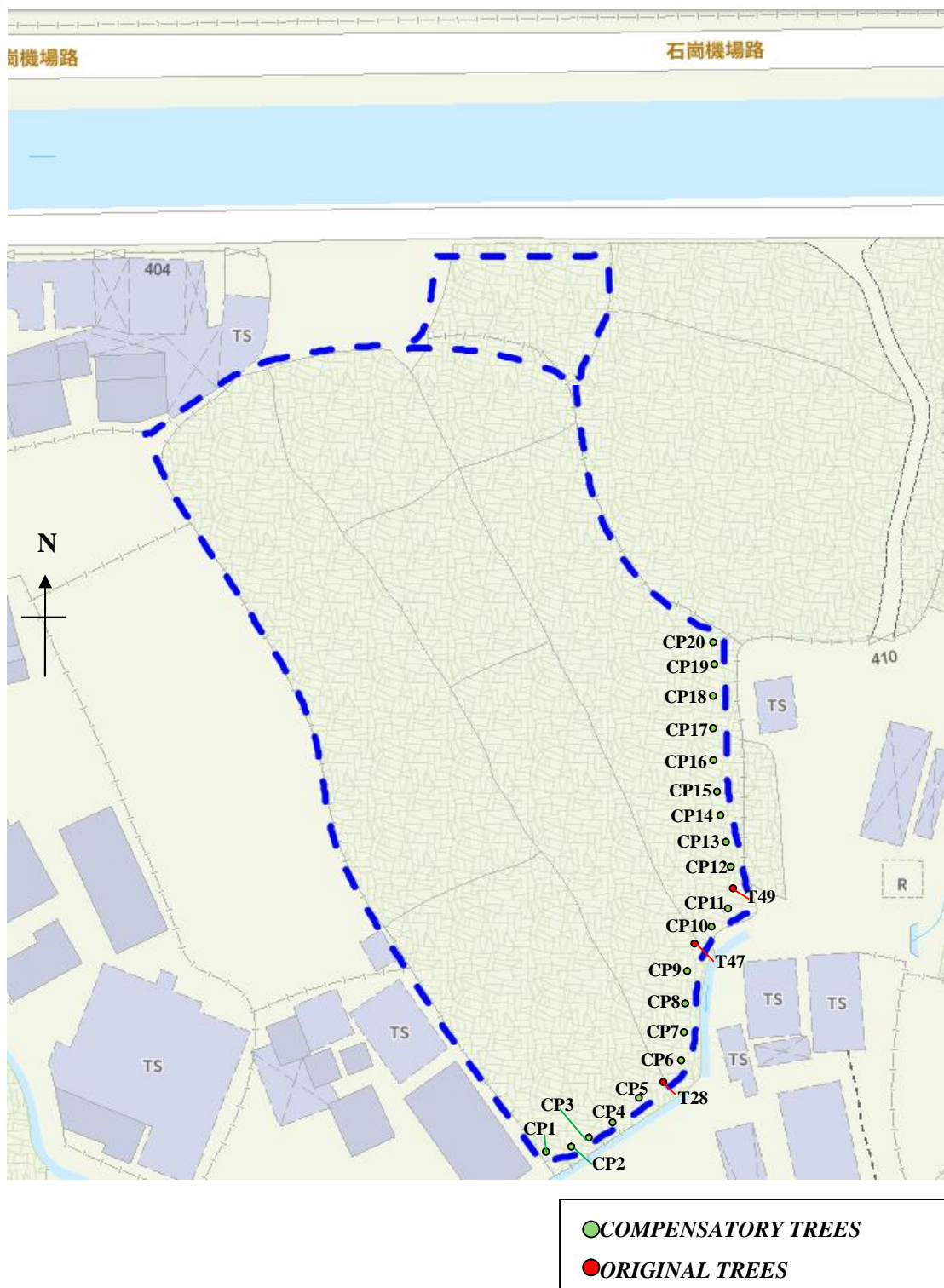
CONTENTS

<i>1</i>	<i>OBJECTIVE</i>	<i>3</i>
<i>2</i>	<i>LOCATION PLAN OF COMPENSATORY TREES</i>	<i>4</i>
<i>3</i>	<i>THE REPLANTING AREA</i>	<i>5</i>
<i>4</i>	<i>RECOMMEND REPLANTED TREES (CP1-20)</i>	<i>6</i>
<i>5</i>	<i>SUMMARY OF PROPOSED PLANTING SPECIES FOR COMPENSATORY PLANTING</i>	<i>7</i>

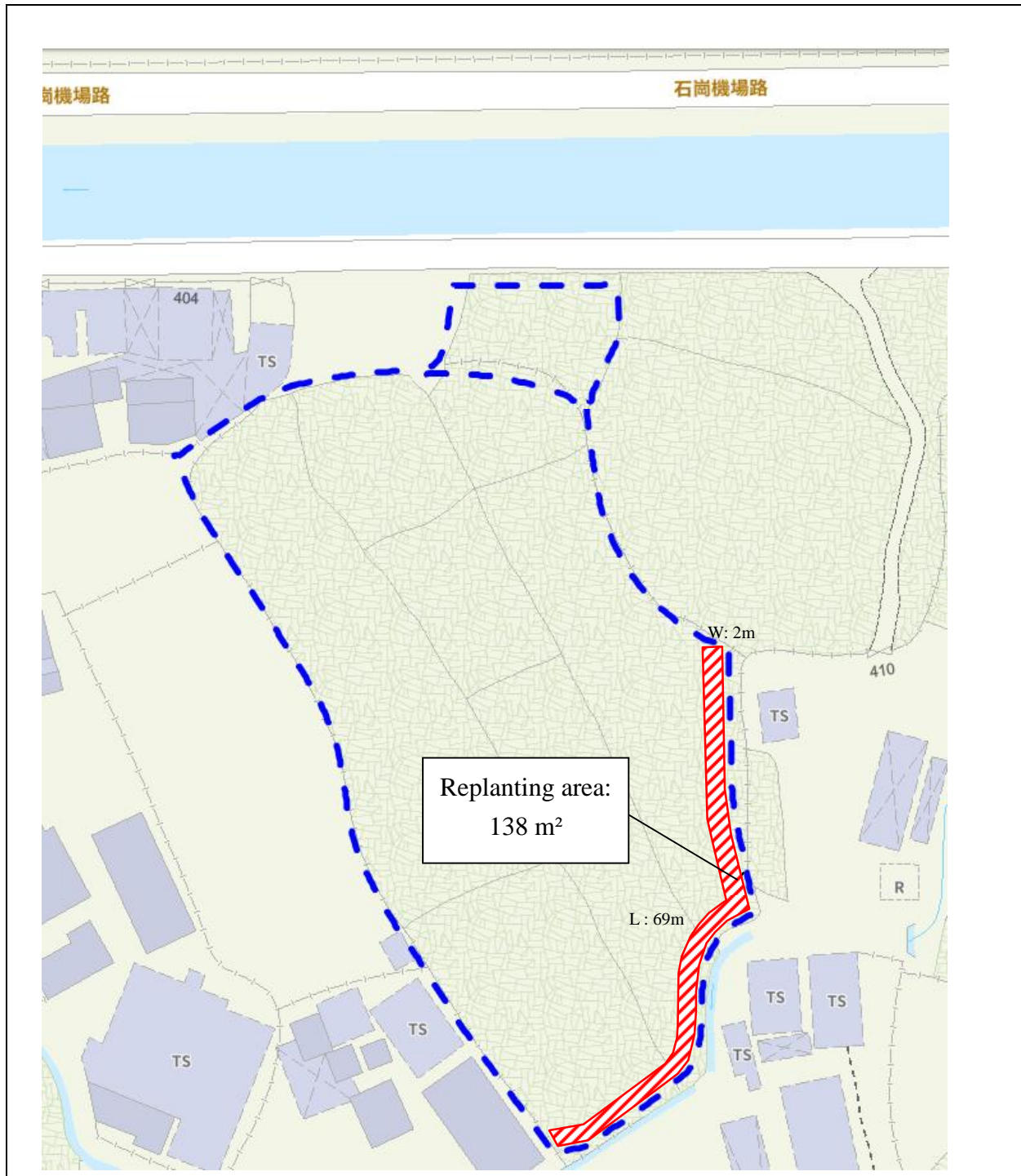
1 OBJECTIVE

The loss of the concerned trees within will be compensated according to item 4 of Section I, Appendix II of LAO PN No. 2/2020 and 2/2020A. In general, implementation of compensatory planting, of a ratio not less than 1:1 in terms of quantity and quality, within the subject Lot would be acceptable. That is, the total number of compensatory trees shall be equal or not less than that of the lost tree. We recommend replanting 20 standard trees within the Lot. There is 82 number of felled trees for which 20 numbers' standard trees of 60mm DBH are required for compensation.

2 LOCATION PLAN OF COMPENSATORY TREES



3 THE REPLANTING AREA



4 **RECOMMEND COMPENSATORY TREES**

- Replanting area: 138m²
- The gradient of the landscape: 0°
- Species
 - Ø 2 nos. of *Schefflera heptaphylla* (鴨腳木) (CP1, 3)
 - Ø 3 nos. of *Murraya paniculata* (九里香) (CP2, 4, 14)
 - Ø 2 nos. of *Xanthostemon chrysanthus* (金蒲桃) (CP5, 7)
 - Ø 4 nos. of *Magnolia x soulangeana* (二喬木蘭) (CP6, 8, 16, 18)
 - Ø 2 nos. of *Lagerstroemia speciosa* (大花紫薇) (CP9, 11)
 - Ø 3 nos. of *Osmanthus fragrans* (桂花) (CP10, 12, 20)
 - Ø 2 nos. of *Tabebuia chrysantha* (黃花風鈴木) (CP13, 15)
 - Ø 1 nos. of *Liquidambar formosana* (楓香) (CP17)
 - Ø 1 nos. of *Cinnamomum camphora* (樟) (CP19)
- DBH(mm): 60 (standard tree)
- Height(m): 3
- Spread(m): 1
- Live-crown ratio (%): 50
- Rootball: A rootball at least 450 mm in diameter and 300 mm deep
- Surface treatment: the recipient tree pits will be backfilled with the mixture of 1 part of soil condition with 4 parts of existing soil
- Alinement: 2 meters centre apart will be proposed between the compensatory and existing trees for having better development. Also the compensation trees will be planted at least 1.2m from drainage, channel and curb.
- Depth of soil: at least 1.2m excluding drainage layer
- Alinement: 2 meters centre apart will be proposed between the compensatory and existing trees for having better development. Also the compensation trees will be planted at least 1.2m from drainage, channel and curb.
- Depth of soil: at least 1.2m excluding drainage layer

5 SUMMARY OF PROPOSED PLANTING SPECIES FOR COMPENSATORY PLANTING

<i>Summary of Proposed Planting Species for Compensatory Planting</i>							
Location	Species	DBH (mm)	Crown Spread (m)	Overall Height (m)	Quantity (nos.)	Live-crown ratio (%)	Planting Matrix
Agricultural area	<i>Schefflera heptaphylla</i> (鴨腳木)	60	1	3	2	50	3m centre apart
Agricultural area	<i>Murraya paniculata</i> (九里香)	60	1	3	3	50	3m centre apart
Agricultural area	<i>Xanthostemon chrysanthus</i> (金蒲桃)	60	1	3	2	50	3m centre apart
Agricultural area	<i>Magnolia x Soulangeana</i> (二喬木蘭)	60	1	3	4	50	3m centre apart
Agricultural area	<i>Lagerstroemia speciosa</i> (大花紫薇)	60	1	3	2	50	3m centre apart
Agricultural area	<i>Osmanthus fragrans</i> (桂花)	60	1	3	3	50	3m centre apart
Agricultural area	<i>Tabebuia chrysantha</i> (黃花風鈴木)	60	1	3	2	50	3m centre apart
Agricultural area	<i>Liquidambar formosana</i> (楓香)	60	1	3	1	50	3m centre apart
Agricultural area	<i>Cinnamomum camphora</i> (樟)	60	1	3	1	50	3m centre apart
Total					20		