

Annex II
Tree Survey



Annex II – Tree Survey

Location : Lot 1080 (Part) in D.D. 106, Kam Tin, Yuen Long, N.T.

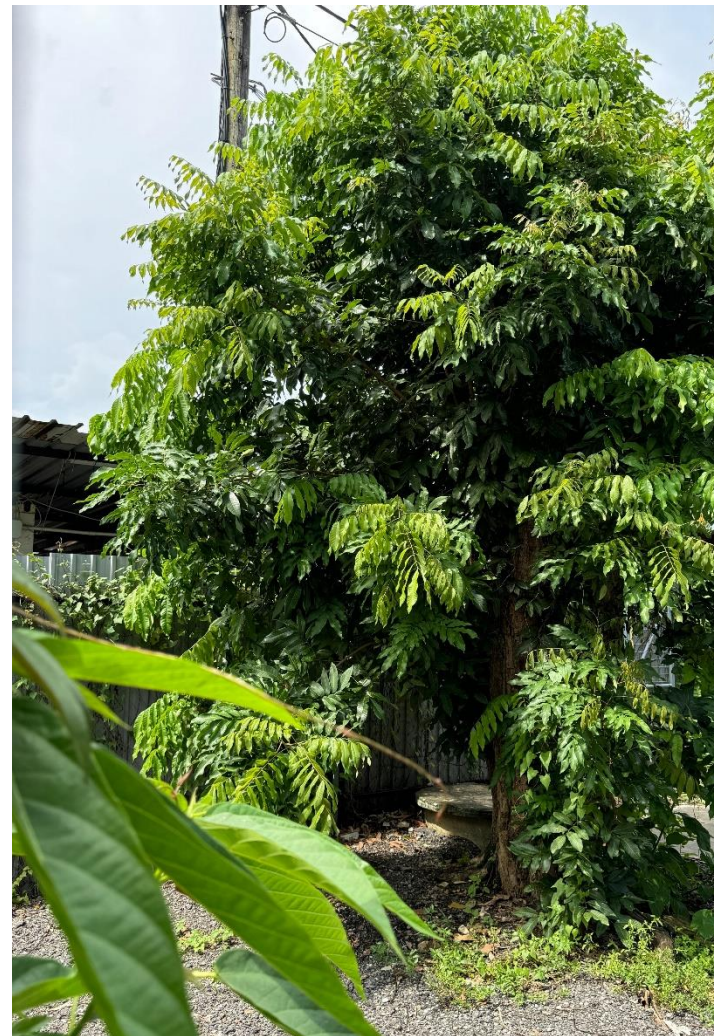
Date of Survey : 21 August 2024

No.	Species	Size		Condition
		DBH (cm) (about)	Height (m) (about)	
T1	<i>Melia azedarach</i> 苦楝	40	6.0	Fair
T2	<i>Dimocarpus longan</i> 龍眼	30	3.0	Fair
T3	<i>Dimocarpus longan</i> 龍眼	40	3.5	Fair
T4	<i>Dimocarpus longan</i> 龍眼	40	4.0	Fair
T5	<i>Ficus microcarpa</i> 細葉榕	100	6.0	Fair
T6	<i>Dimocarpus longan</i> 龍眼	60	3.5	Fair

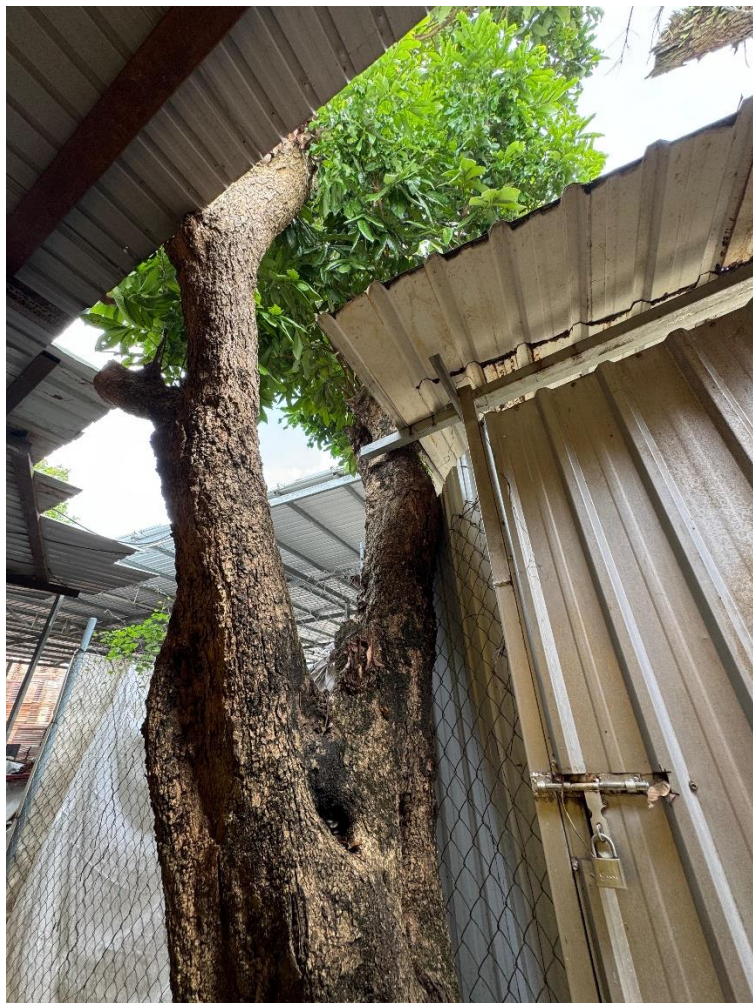
Tree 1



Tree 2



Tree 3



Tree 4



Tree 5



Tree 6



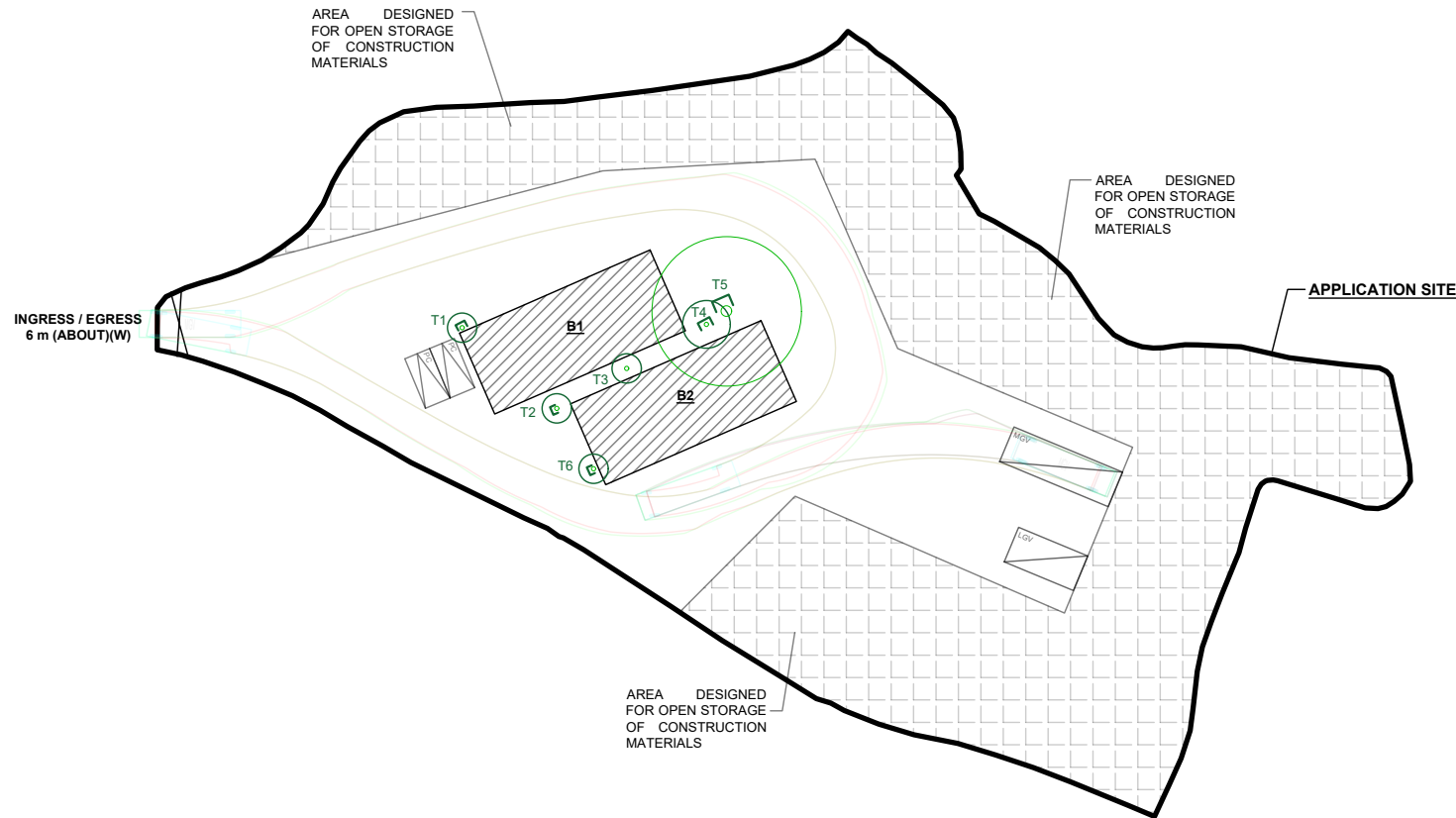
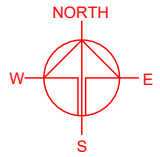
TREE PRESERVATION AND LANDSCAPE PROPOSAL

APPLICATION SITE AREA : 4,226 m² (ABOUT)
 NO. OF EXISTING TREE : 6 (T1 TO T6)
 SPECIES OF TREES : T1 - MELIA AZEDARACH
 T2 - DIMOCARPUS LONGAN
 T3 - DIMOCARPUS LONGAN
 T4 - DIMOCARPUS LONGAN
 T5 - FICUS MICROCARPA
 T6 - DIMOCARPUS LONGAN

NO. OF TREES WILL BE PRESERVED : 6 (T1 TO T6)

KERBS ARE PROPOSED AT TREES (T1, T2, T4, T5 AND T6) TO PREVENT TREE FROM DAMAGING BY MOVEMENT OF VEHICLES.

STRUCTURE	USE	COVERED AREA	GFA	BUILDING HEIGHT
B1	SHED FOR STORAGE OF CONSTRUCTION MATERIALS AND SITE OFFICE*	160 m ² (ABOUT)	160 m ² (ABOUT)	5 m (ABOUT)(1-STOREY)
B2	SHED FOR STORAGE OF CONSTRUCTION MATERIALS AND SITE OFFICE*	160 m ² (ABOUT)	160 m ² (ABOUT)	5 m (ABOUT)(1-STOREY)
TOTAL		320 m² (ABOUT)	320 m² (ABOUT)	



PARKING AND LOADING / UNLOADING (L/UL) PROVISIONS

NO. OF PRIVATE CAR PARKING SPACE : 2
 DIMENSION OF PARKING SPACE : 5 m (L) x 2.5 m (W)
 NO. OF L/UL SPACE FOR LIGHT GOODS VEHICLE : 1
 DIMENSION OF L/UL SPACE : 7 m (L) X 3.5 m (W)
 NO. OF L/UL SPACE FOR MEDIUM GOODS VEHICLE : 1
 DIMENSION OF L/UL SPACE : 11 m (L) X 3.5 m (W)

LEGEND

- APPLICATION SITE
- STRUCTURE (SHED)
- PARKING SPACE (PRIVATE CAR)
- L/UL SPACE (LIGHT GOODS VEHICLE)
- L/UL SPACE (MEDIUM GOODS VEHICLE)
- INGRESS / EGRESS
- EXISTING TREES

PLANNING CONSULTANT



PROJECT

PROPOSED TEMPORARY OPEN STORAGE OF CONSTRUCTION MATERIALS WITH ANCILLARY FACILITIES FOR A PERIOD OF 3 YEARS AND ASSOCIATED FILLING OF LAND

SITE LOCATION

LOT 1080 (PART) IN D.D. 106, KAM TIN, YUEN LONG, NEW TERRITORIES

SCALE

1 : 700 @ A4

DRAWN BY: MN DATE: 22.8.2024

CHECKED BY: DATE:

APPROVED BY: DATE:

DWG. TITLE
 LANDSCAPE PLAN

DWG NO.: PLAN 1 VER.: 002