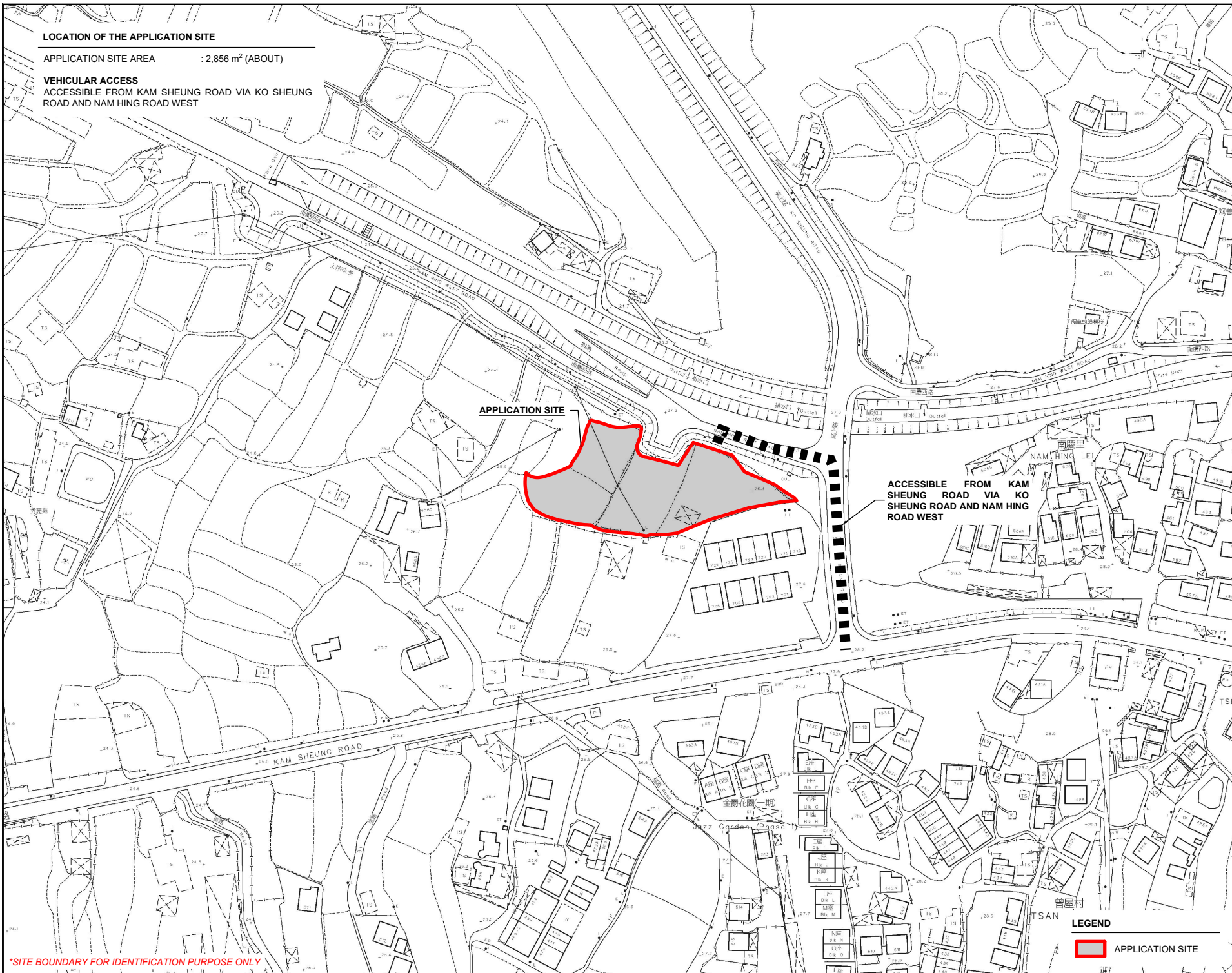
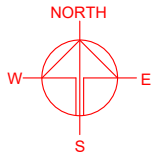


**LOCATION OF THE APPLICATION SITE**

APPLICATION SITE AREA : 2,856 m<sup>2</sup> (ABOUT)

**VEHICULAR ACCESS**

ACCESSIBLE FROM KAM SHEUNG ROAD VIA KO SHEUNG ROAD AND NAM HING ROAD WEST



APPLICATION SITE

ACCESSIBLE FROM KAM SHEUNG ROAD VIA KO SHEUNG ROAD AND NAM HING ROAD WEST

PLANNING CONSULTANT



PROJECT

PROPOSED TEMPORARY PLACE OF RECREATION, SPORTS OR CULTURE WITH ANCILLARY FACILITIES FOR A PERIOD OF 3 YEARS AND ASSOCIATED FILLING OF LAND

SITE LOCATION

VARIOUS LOTS IN D.D. 112, SHEK KONG, YUEN LONG, NEW TERRITORIES

SCALE

1 : 2000 @ A4

DRAWN BY

MN

DATE

1.2.2024

REVISED BY

DATE

APPROVED BY

DATE

**LEGEND**

 APPLICATION SITE

\*SITE BOUNDARY FOR IDENTIFICATION PURPOSE ONLY

DWG. TITLE  
LOCATION PLAN

DWG NO.

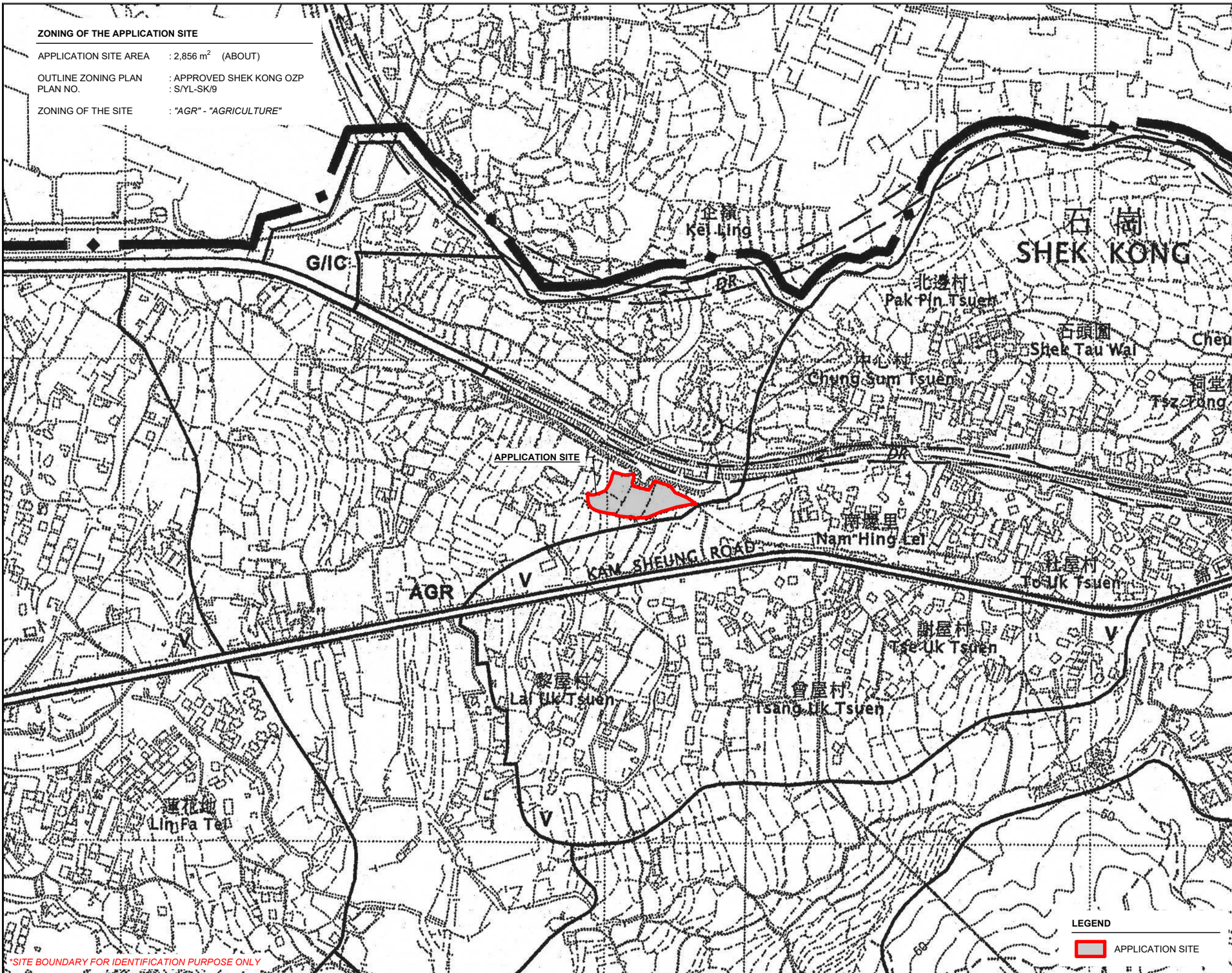
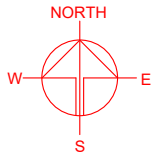
PLAN 1

VER.

001

**ZONING OF THE APPLICATION SITE**

APPLICATION SITE AREA : 2,856 m<sup>2</sup> (ABOUT)  
 OUTLINE ZONING PLAN : APPROVED SHEK KONG OZP  
 PLAN NO. : S/YL-SK/9  
 ZONING OF THE SITE : "AGR" - "AGRICULTURE"



\*SITE BOUNDARY FOR IDENTIFICATION PURPOSE ONLY

PLANNING CONSULTANT  
 R-Riches  
 Property Consultants Ltd.

PROJECT  
 PROPOSED TEMPORARY PLACE OF RECREATION, SPORTS OR CULTURE WITH ANCILLARY FACILITIES FOR A PERIOD OF 3 YEARS AND ASSOCIATED FILLING OF LAND

SITE LOCATION  
 VARIOUS LOTS IN D.D. 112, SHEK KONG, YUEN LONG, NEW TERRITORIES

SCALE 1 : 5000 @ A4	
DRAWN BY MN	DATE 1.2.2024
REVISED BY	DATE
APPROVED BY	DATE
DWG. TITLE ZONING OF THE SITE	
DWG. NO. PLAN 2	VER. 001

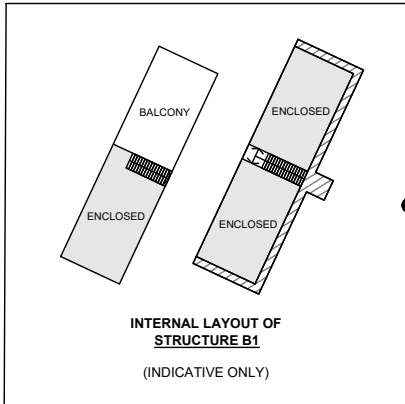
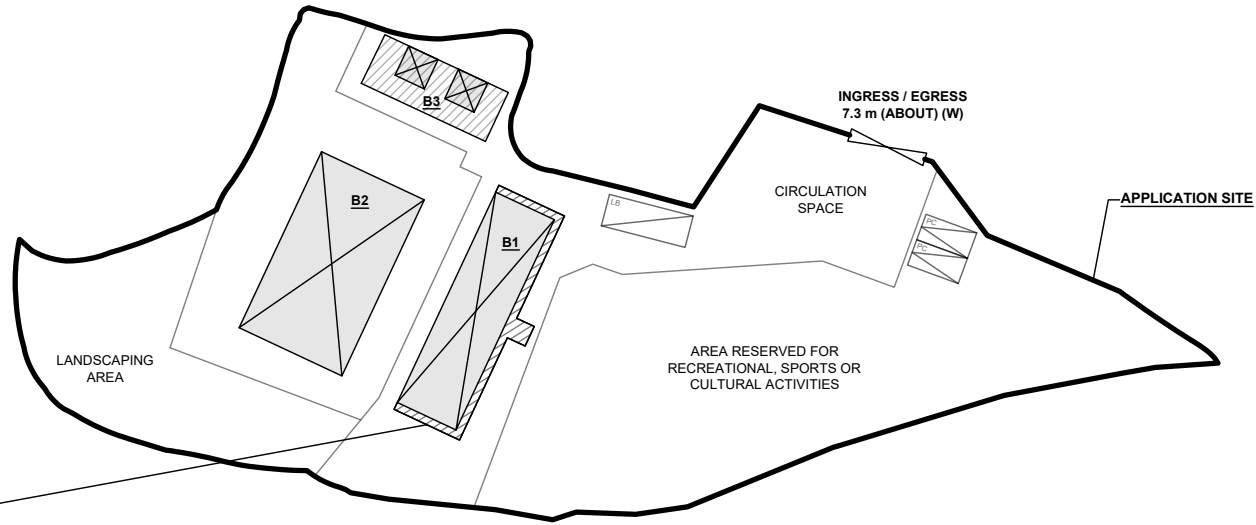
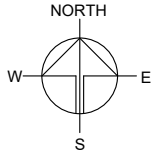


**DEVELOPMENT PARAMETERS**

APPLICATION SITE AREA	: 2,856 m <sup>2</sup>	(ABOUT)
COVERED AREA	: 409 m <sup>2</sup>	(ABOUT)
UNCOVERED AREA	: 2,447 m <sup>2</sup>	(ABOUT)
PLOT RATIO	: 0.16	(ABOUT)
SITE COVERAGE	: 14 %	(ABOUT)
NO. OF STRUCTURE	: 3	
DOMESTIC GFA	: NOT APPLICABLE	
NON-DOMESTIC GFA	: 472 m <sup>2</sup>	(ABOUT)
TOTAL GFA	: 472 m <sup>2</sup>	(ABOUT)
BUILDING HEIGHT	: 3 m - 7 m	(ABOUT)
NO. OF STOREY	: 1 - 2	

STRUCTURE	USE	COVERED AREA	GFA	BUILDING HEIGHT
B1	ACTIVITY ROOM, WASHROOM, SITE OFFICE AND STORE ROOM	157 m <sup>2</sup> (ABOUT)#	220 m <sup>2</sup> (ABOUT)#	7 m (ABOUT)(2-STOREY)
B2	ACTIVITY ROOM*	189 m <sup>2</sup> (ABOUT)	189 m <sup>2</sup> (ABOUT)	4 m (ABOUT)(1-STOREY)
B3	RAIN SHELTER, WASHROOM AND STORE ROOM	63 m <sup>2</sup> (ABOUT)	63 m <sup>2</sup> (ABOUT)	3 m (ABOUT)(1-STOREY)
<b>TOTAL</b>		<b>409 m<sup>2</sup> (ABOUT)</b>	<b>472 m<sup>2</sup> (ABOUT)</b>	

\*STRUCTURE B2 IS A RETRACTABLE MARQUEE  
 #GFA OF STRUCTURE B1 - 157m<sup>2</sup> (G/F) + 63 m<sup>2</sup> (1/F) = 220m<sup>2</sup>



**PARKING AND LOADING / UNLOADING PROVISIONS**

NO. OF PRIVATE CAR PARKING SPACE	: 2
DIMENSION OF PARKING SPACE	: 5 m (L) x 2.5 m (W)
NO. OF L/UL SPACE FOR LIGHT BUS / LIGHT GOODS VEHICLE	: 1
DIMENSION OF L/UL SPACE	: 8 m (L) x 3.5 m (W)

**LEGEND**

- APPLICATION SITE
- STRUCTURE (ENCLOSED)
- STRUCTURE (NOT ENCLOSED)
- PARKING SPACE (PC)
- LOADING / UNLOADING SPACE (LB / LGV)
- INGRESS / EGRESS

PLANNING CONSULTANT



PROJECT

PROPOSED TEMPORARY PLACE OF RECREATION, SPORTS OR CULTURE WITH ANCILLARY FACILITIES FOR A PERIOD OF 3 YEARS AND ASSOCIATED FILLING OF LAND

SITE LOCATION

VARIOUS LOTS IN D.D. 112, SHEK KONG, YUEN LONG, NEW TERRITORIES

SCALE

1 : 700 @ A4

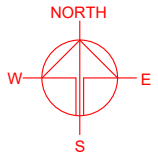
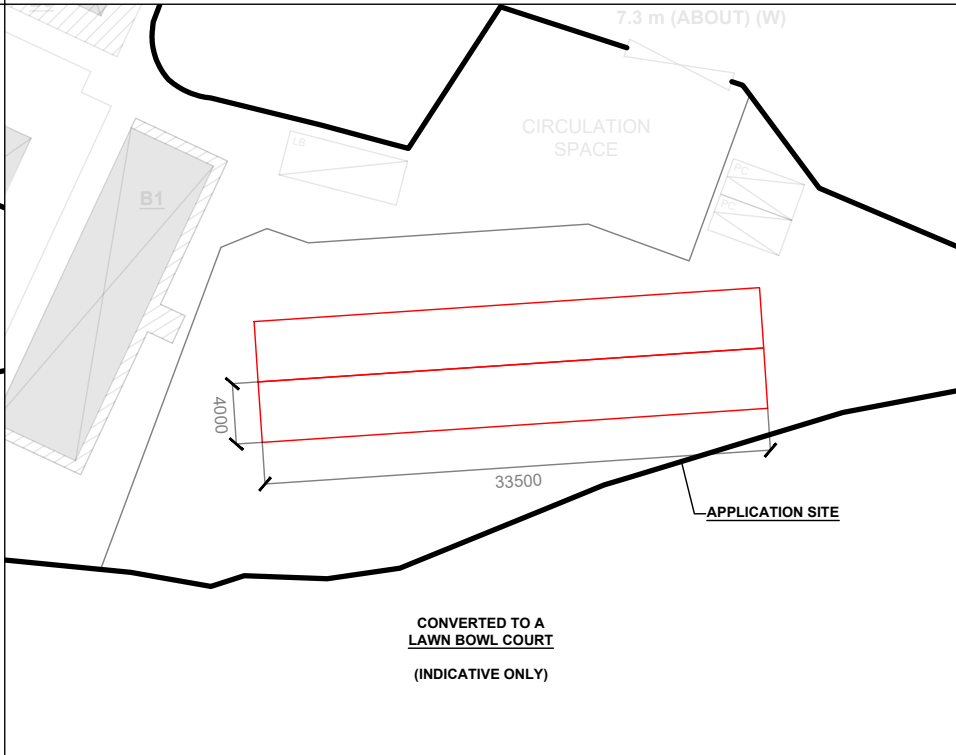
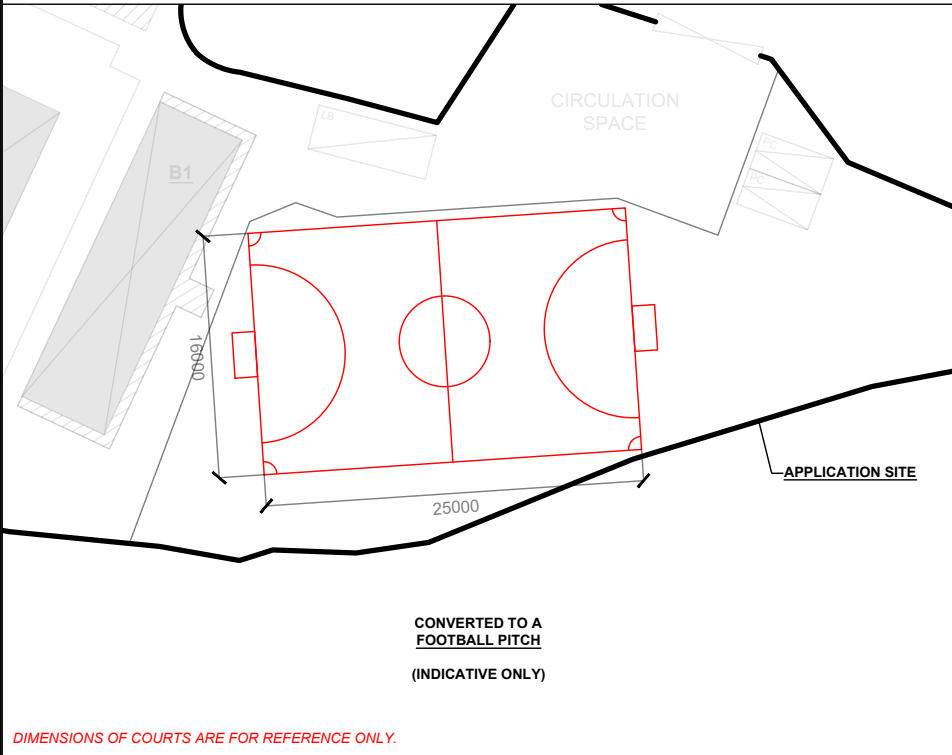
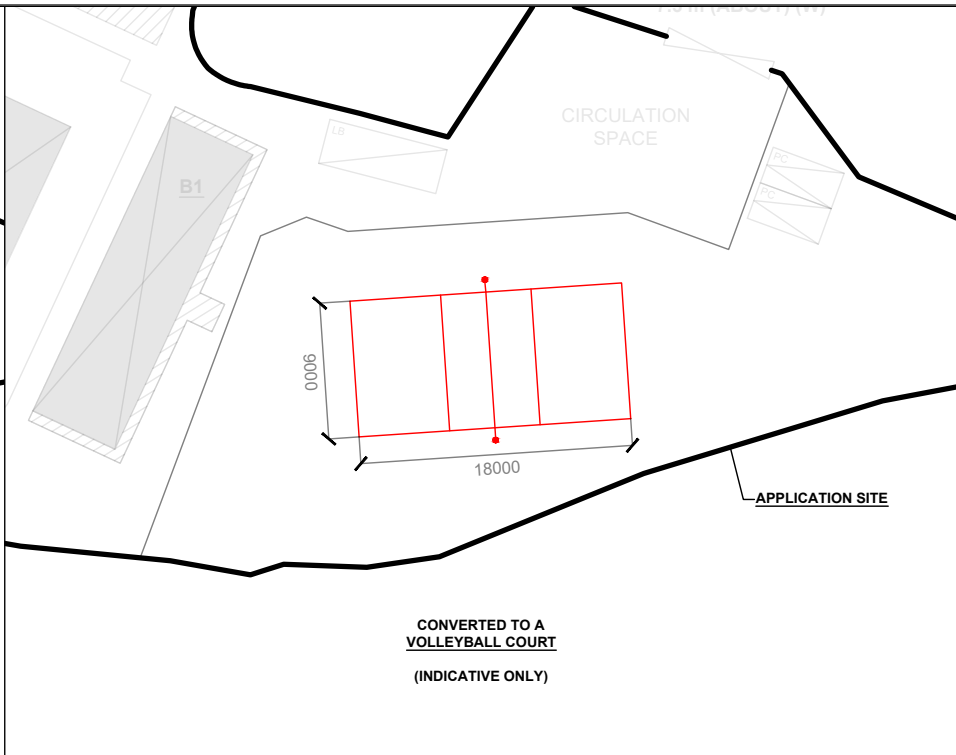
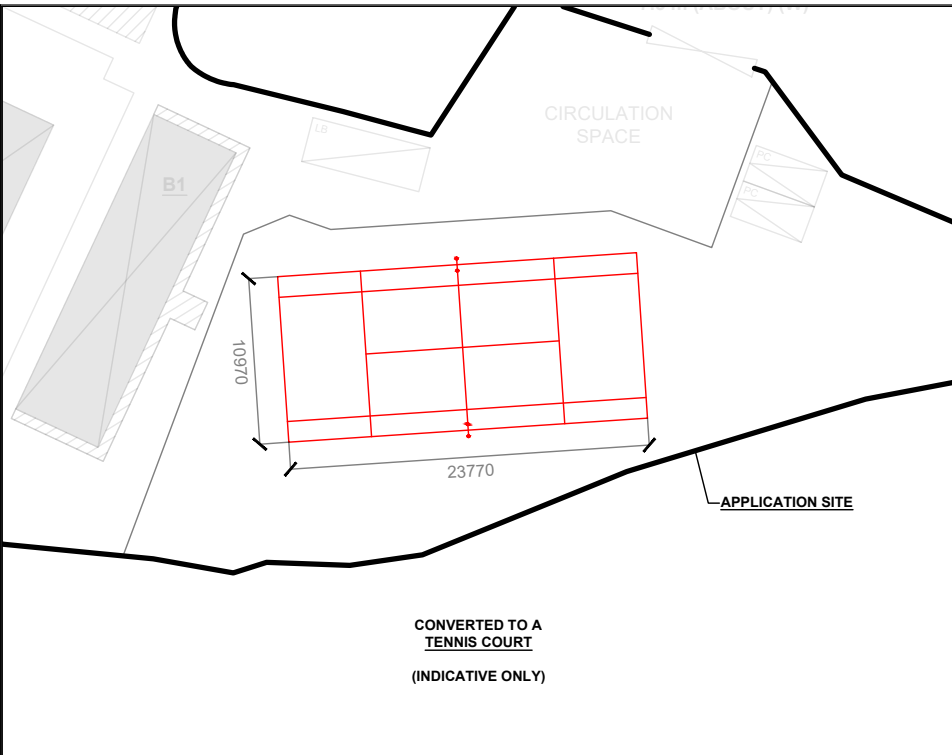
DRAWN BY: MN DATE: 6.11.2024

REVISED BY: DATE:

APPROVED BY: DATE:

DWG. TITLE  
LAYOUT PLAN

DWG NO.: PLAN 4 VER.: 001



PLANNING CONSULTANT



PROJECT

PROPOSED TEMPORARY PLACE OF RECREATION, SPORTS OR CULTURE WITH ANCILLARY FACILITIES FOR A PERIOD OF 3 YEARS AND ASSOCIATED FILLING OF LAND

SITE LOCATION

VARIOUS LOTS IN D.D. 112, SHEK KONG, YUEN LONG, NEW TERRITORIES

SCALE

1 : 500 @ A4

DRAWN BY

MN

DATE

6.11.2024

REVISED BY

DATE

APPROVED BY

DATE

DWG. TITLE

MULTI-PURPOSE AREA

DWG NO.

PLAN 5

VER.

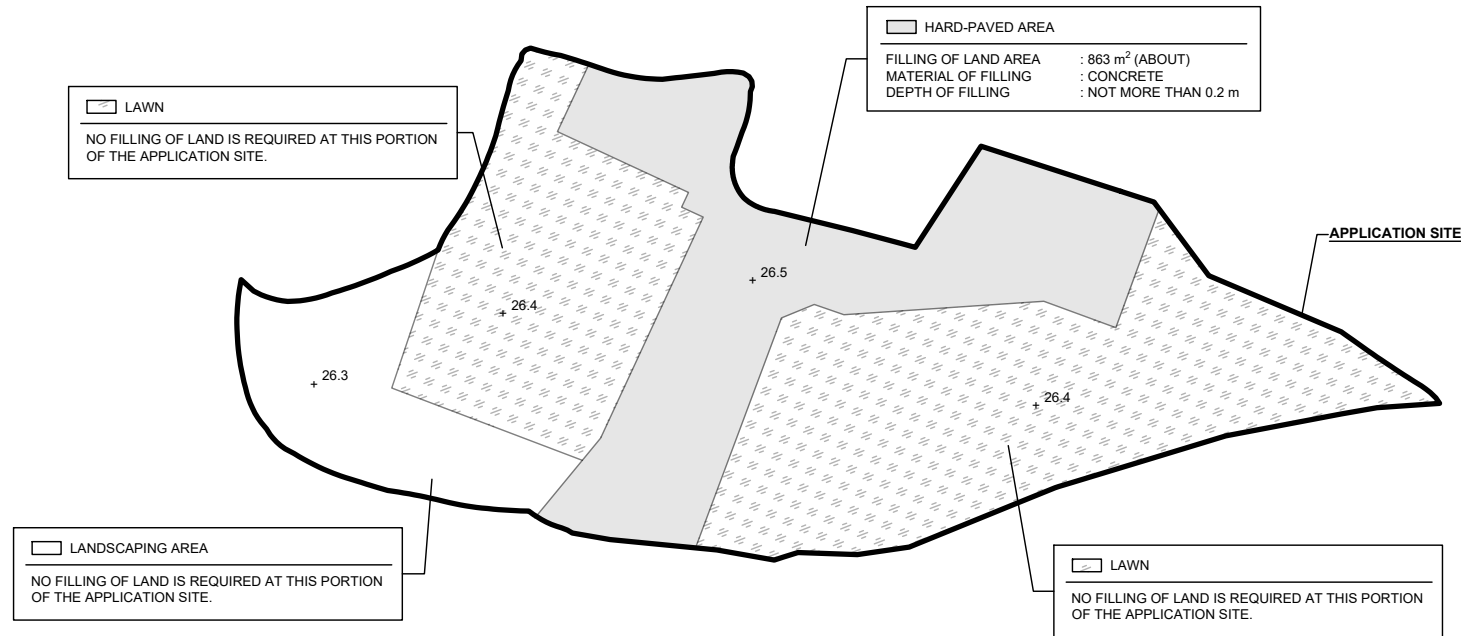
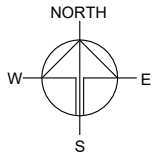
001

*DIMENSIONS OF COURTS ARE FOR REFERENCE ONLY.*

**PAVED RATIO OF THE APPLICATION SITE**

APPLICATION SITE AREA	: 2,856 m <sup>2</sup>	(ABOUT)
COVERED BY STRUCTURE	: 409 m <sup>2</sup>	(ABOUT)
EXISTING HARD-PAVED AREA	: 863 m <sup>2</sup>	(ABOUT)
DEPTH OF LAND FILLING	: NOT MORE THAN 0.2 m	
EXISTING SITE LEVELS	: +26.5 mPD (ABOUT)	
MATERIAL OF LAND FILLING	: CONCRETE	
USE	: SITE FORMATION OF STRUCTURES, AND CIRCULATION SPACE	
EXISTING LAWN AREA	: 1,623 m <sup>2</sup>	(ABOUT)
EXISTING LANDSCAPING AREA	: 370 m <sup>2</sup>	(ABOUT)

\*NO FURTHER FILLING OF LAND WILL BE CARRIED OUT AT THE APPLICATION SITE AFTER PLANNING APPROVAL HAS BEEN GRANTED FROM THE TOWN PLANNING BOARD.



**LEGEND**

	APPLICATION SITE
	LAND FILLING AREA
+3.4	SITE LEVEL

SITE LEVELS ARE FOR REFERENCE ONLY.

PLANNING CONSULTANT



PROJECT

PROPOSED TEMPORARY PLACE OF RECREATION, SPORTS OR CULTURE WITH ANCILLARY FACILITIES FOR A PERIOD OF 3 YEARS AND ASSOCIATED FILLING OF LAND

SITE LOCATION

VARIOUS LOTS IN D.D. 112, SHEK KONG, YUEN LONG, NEW TERRITORIES

SCALE

1 : 700 @ A4

DRAWN BY	DATE
MN	7.11.2024

REVISED BY	DATE

APPROVED BY	DATE

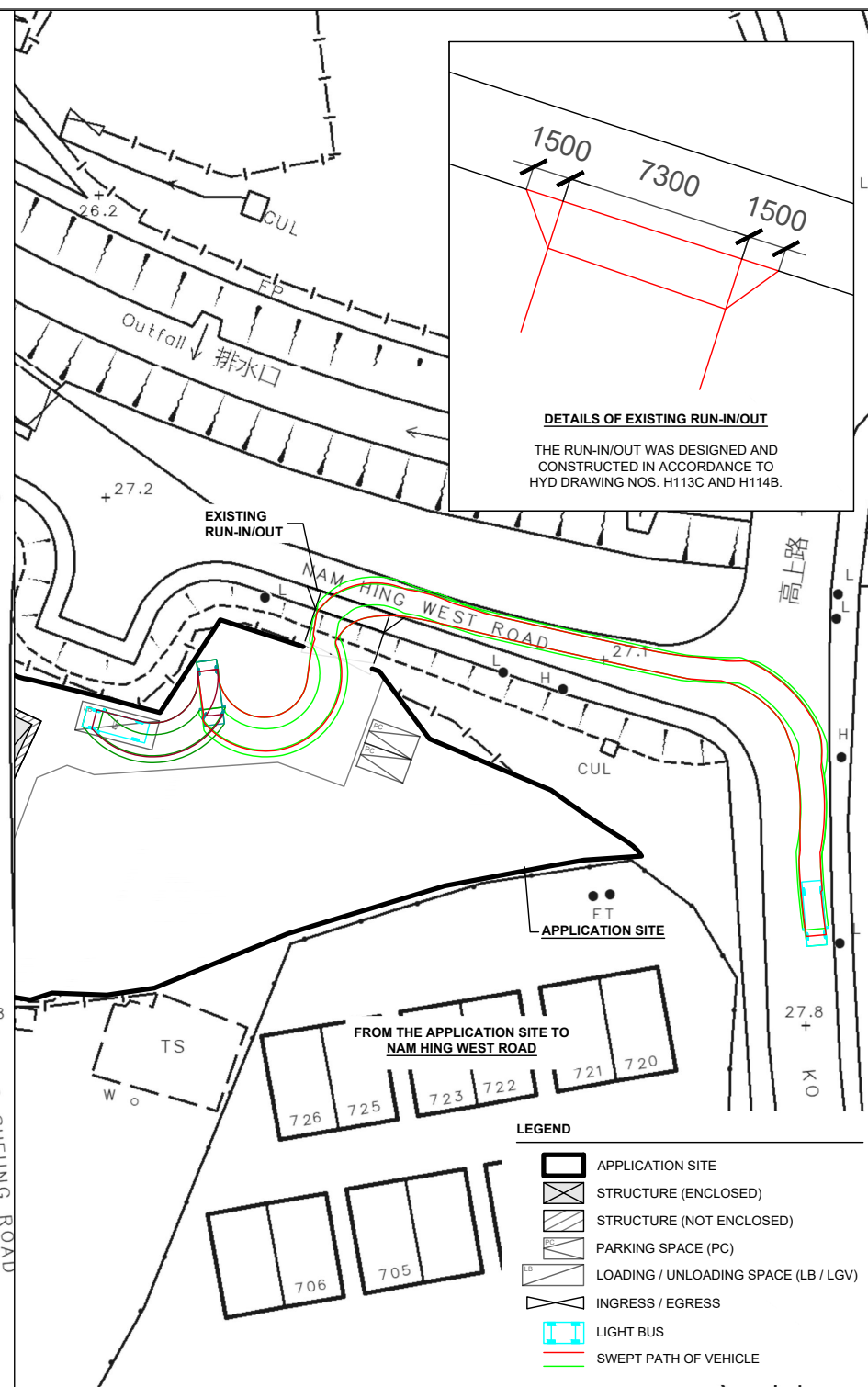
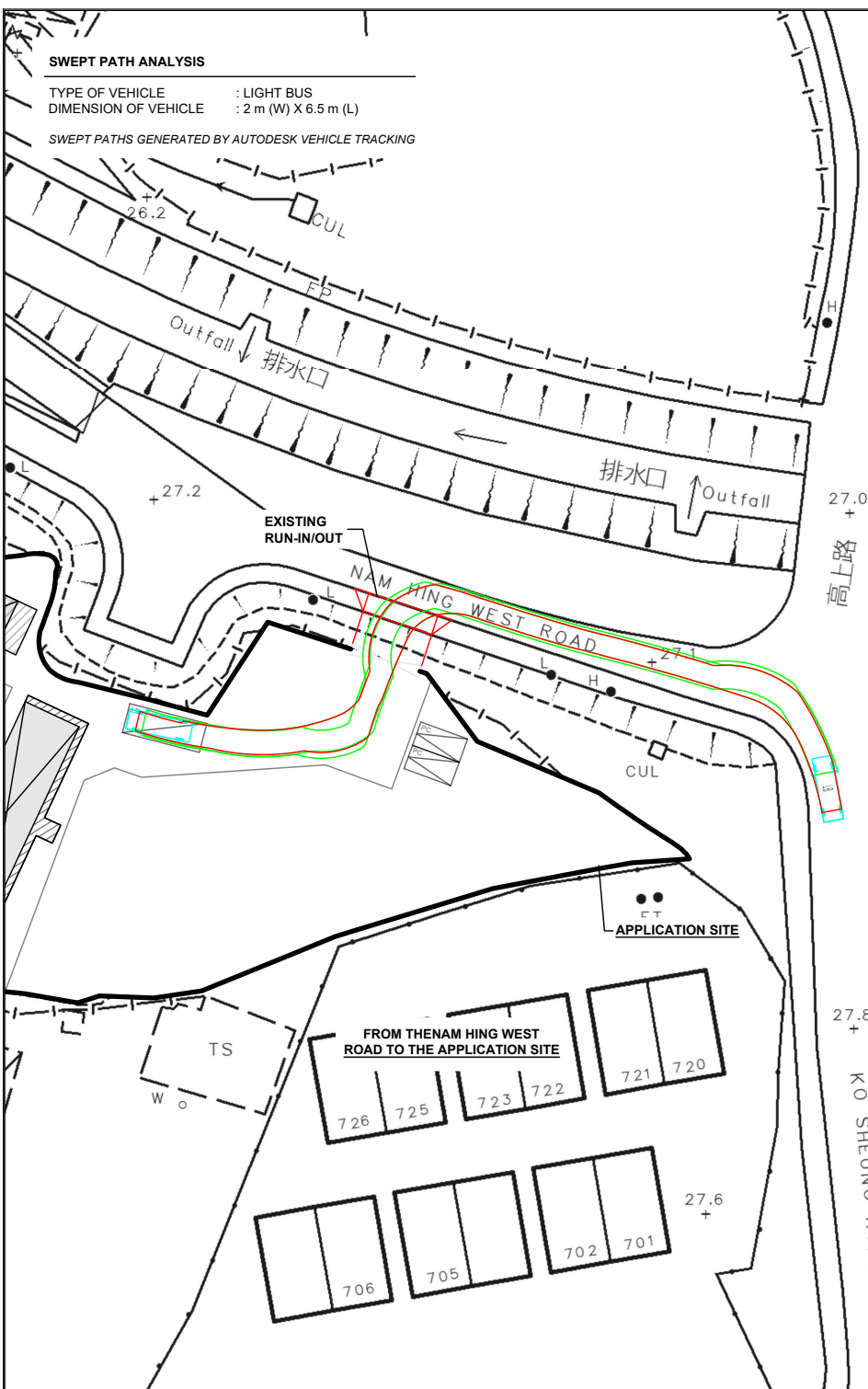
DWG. TITLE  
FILLING OF LAND

DWG NO.	VER.
PLAN 6	001

**SWEPT PATH ANALYSIS**

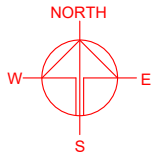
TYPE OF VEHICLE : LIGHT BUS  
 DIMENSION OF VEHICLE : 2 m (W) X 6.5 m (L)

SWEPT PATHS GENERATED BY AUTODESK VEHICLE TRACKING



**DETAILS OF EXISTING RUN-IN/OUT**

THE RUN-IN/OUT WAS DESIGNED AND CONSTRUCTED IN ACCORDANCE TO HYD DRAWING NOS. H113C AND H114B.



PLANNING CONSULTANT



PROJECT

PROPOSED TEMPORARY PLACE OF RECREATION, SPORTS OR CULTURE WITH ANCILLARY FACILITIES FOR A PERIOD OF 3 YEARS AND ASSOCIATED FILLING OF LAND

SITE LOCATION

VARIOUS LOTS IN D.D. 112, SHEK KONG, YUEN LONG, NEW TERRITORIES

SCALE  
1: 700 @ A4

DRAWN BY: MN DATE: 7.11.2024

CHECKED BY: DATE:

APPROVED BY: DATE:

DWG. TITLE  
SWEPT PATH ANALYSIS

DWG NO. PLAN 7 VER. 001

**LEGEND**

- APPLICATION SITE
- STRUCTURE (ENCLOSED)
- STRUCTURE (NOT ENCLOSED)
- PARKING SPACE (PC)
- LOADING / UNLOADING SPACE (LB / LGV)
- INGRESS / EGRESS
- LIGHT BUS
- SWEPT PATH OF VEHICLE