

THIS DWG. SUPERSEDES THE DWG. NO. 11W-201 SHEET 1

		REVS.	A	B	C	D	E	F	G	H	J	K	L
		INITIAL											
DRAWN: T.W.L.		DATE: 6-2-03											
CHECKED: W.M.CHANG		APPROVED: W.M.CHANG											
SCALE: N.T.S.		SHEET(S) IN SET: 1				PROJECT NO.				CONTRACT NO.			
ASSET MANAGEMENT		DRG. NO. T GEN 51220 DE33013801 - A											

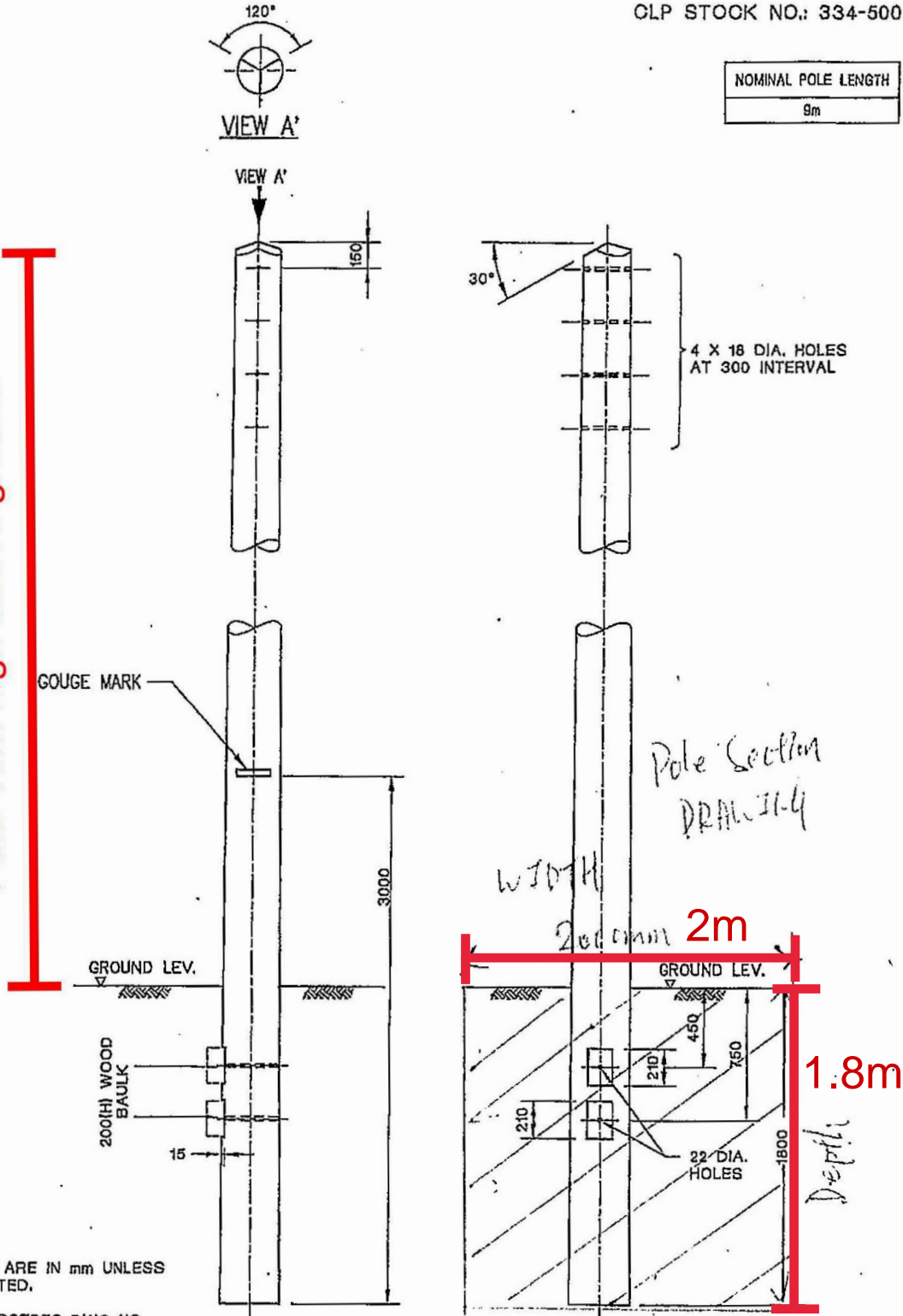
INFORMATION CLASS: PROPRIETARY ALL RIGHTS RESERVED AND REPRODUCTION IN ANY FORM MUST BE APPROVED BY CLP POWER

Excavation for pole stay:
 1.5m(Length)x1.5m(Width)x1.5m(Depth)

CLP STOCK NO.: 334-500

NOMINAL POLE LENGTH
9m

Pole 10m high above ground



NOTE:
ALL DIMENSIONS ARE IN mm UNLESS OTHERWISE STATED.
THIS DWG. SUPERSEDES DWG NO. ESC/G/96-89

G	GOUGE MARK UPDATED TO 3m	F	ADDITIONAL BAULK, GOUGE MARK MEASUREMENT INCREASED
---	--------------------------	---	----------------------------------------------------



REVS.	28.10.02	28.1.03	8.10.04	30.09.15	05.08.16	13.03.17	01.05.17						
INITIAL	HGCHOW	HGCHOW	F.O.	S.K.LAU	KL.CHAN	KL.CHAN	KL.CHAN						

TITLE : LV OHL WOOD POLE

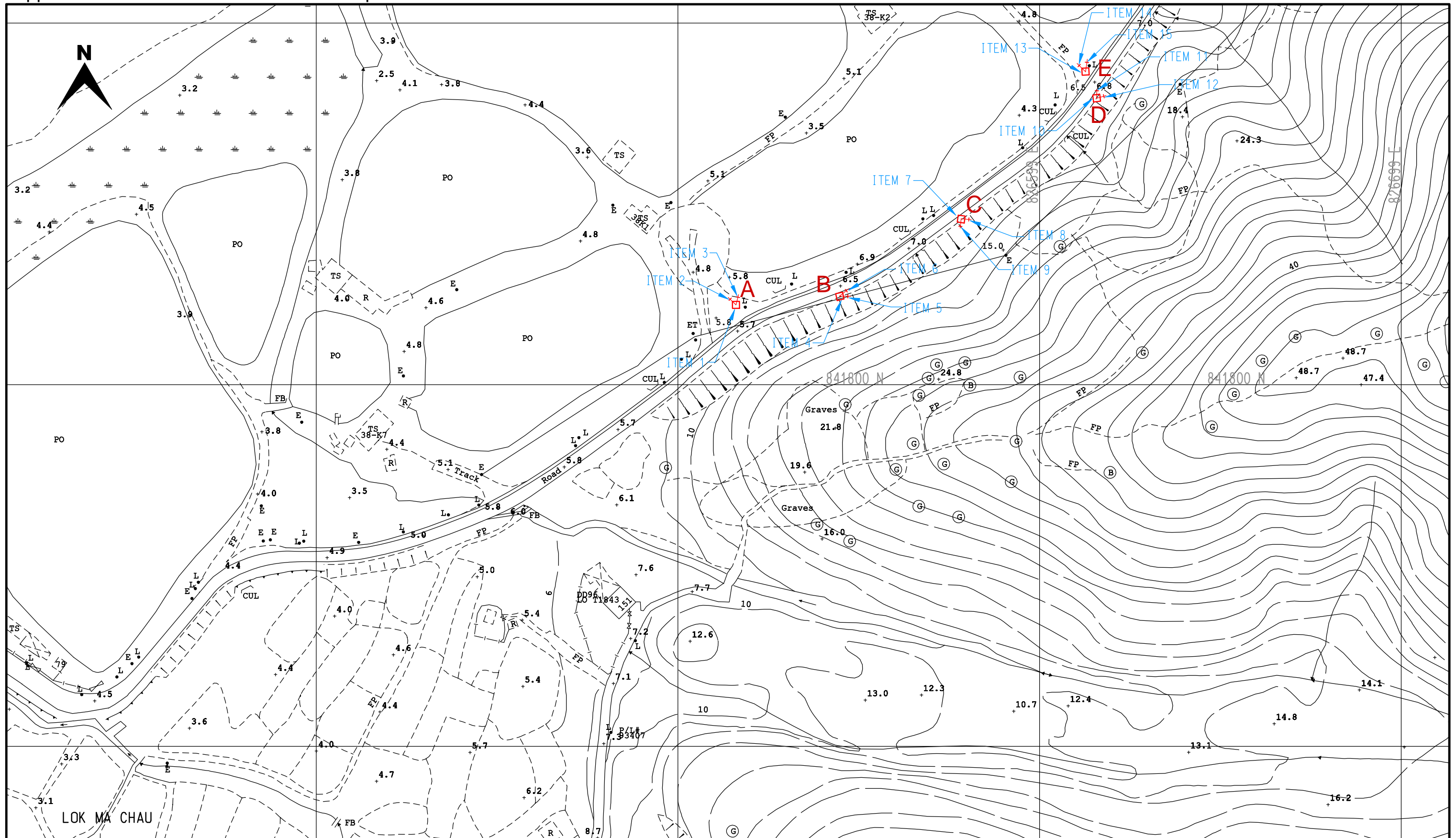
DRAWN: S.C.T.	DATE: 17-3-88	PROJECT NO.	CONTRACT NO.
CHECKED: Y.N.S	APPROVED:		
SCALE: N.T.S.	SHEET(S) IN SET: 1		

ASSET MANAGEMENT DRG. NO. T GEN 51220 DE 33 0024 01 GA

INFORMATION CLASS: PROPRIETARY ALL RIGHTS RESERVED AND REPRODUCTION IN ANY FORM MUST BE APPROVED BY GLP POWER

Excavation for pole:
2m(Length)x2m(Width)x1.8m(Depth)

Appendix 3 - Location Plan and sectional plan



LEGEND :

- | | | | |
|--|----------------------------------------------------------|--|--------------------------------------------------|
| | PROPOSED TRENCH FOR LAYING / RECOVERING CABLE | | EXISTING OVERHEAD LINE & POLE |
| | PROPOSED TRENCH FOR LAYING DUCTS | | PROPOSED 11kV, L.V., OHL, OF STEEL / WOODEN POLE |
| | PROPOSED CABLE THROUGH EXISTING DUCTS | | OVERHEAD LINE & POLE TO BE REMOVED |
| | EXISTING PILLAR | | PROPOSED TREE TRIMMING / CUTTING |
| | PROPOSED PILLAR 1.6M x 0.6M x 0.75M / CUTOUT BOX | | EXISTING POLE MOUNTED TRANSFORMER |
| | EXCAVATION FOR JOINTING / REPAIRING / INSPECTING CABLE | | PROPOSED POLE MOUNTED TRANSFORMER |
| | PROPOSED 5.0M(L) x 2.39M(W) x 3.0M(H) PACKAGE SUBSTATION | | PROPOSED STAY / STAY POLE |



TITLE :OHL POLE & STAY ERECTION AT
LOK MA CHAU VILLAGE

SCALE 1:1000

DRAWN :C.M.TANG

MAP NO : 02SE03B

DATE :30-11-2021

CHECKED :Y.F.YIK

REGION :NR

O.C. :YL

E/O NO :

PROJECT REF. : NRYL2020-0710

PLAN REF. :NRYL2020-0710-02H