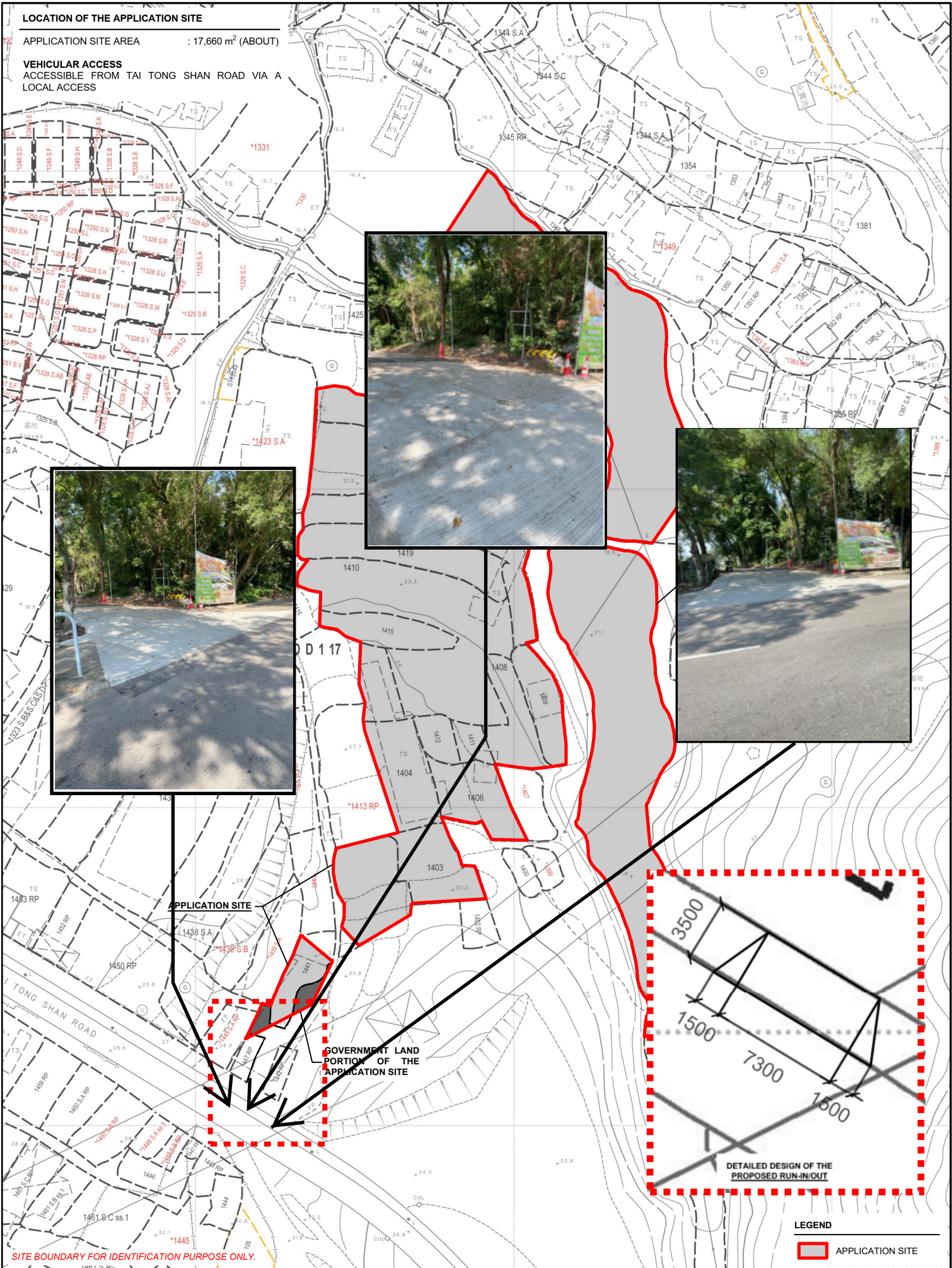


**LOCATION OF THE APPLICATION SITE**

APPLICATION SITE AREA : 17,660 m<sup>2</sup> (ABOUT)

**VEHICULAR ACCESS**

ACCESSIBLE FROM TAI TONG SHAN ROAD VIA A LOCAL ACCESS

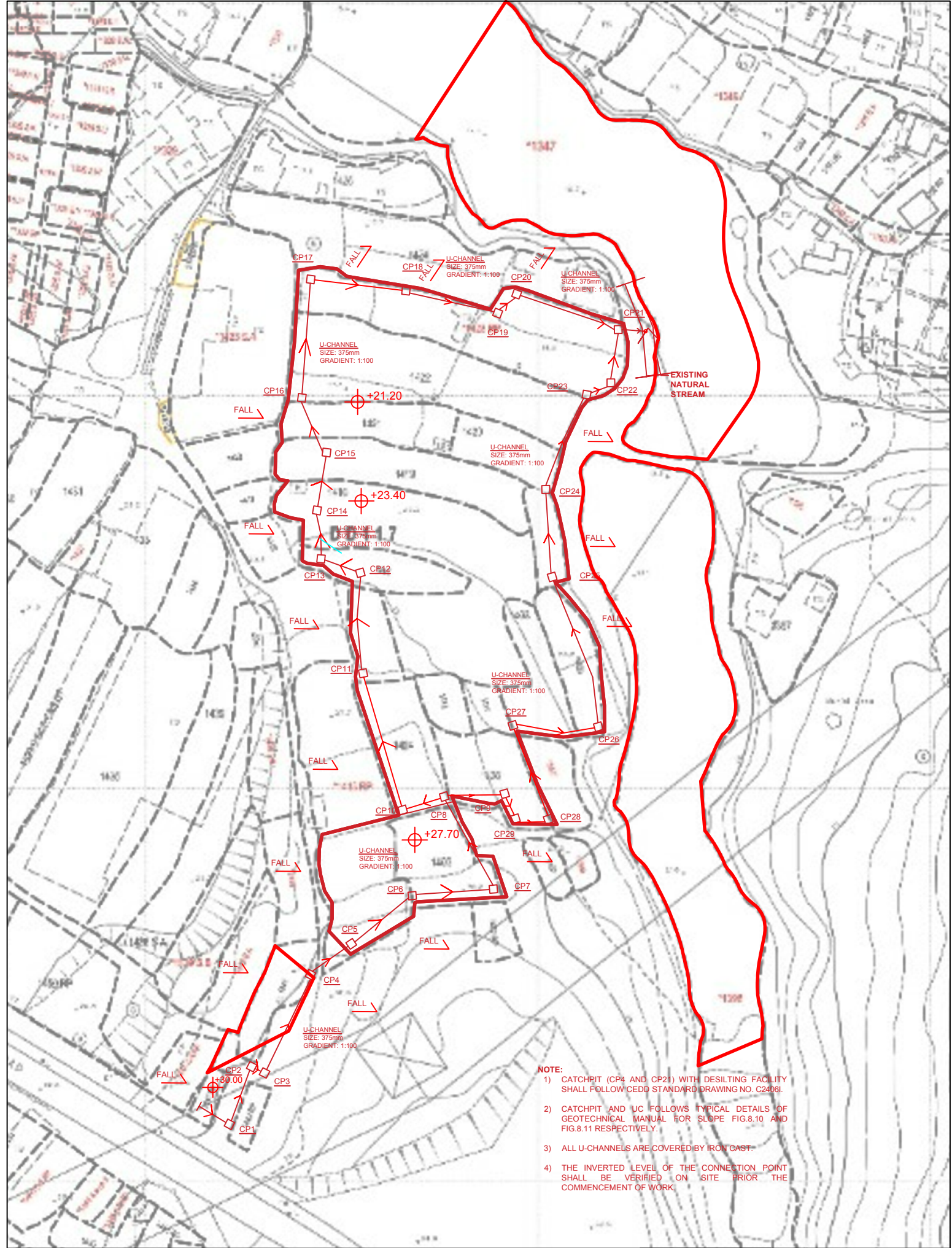


SITE BOUNDARY FOR IDENTIFICATION PURPOSE ONLY.

**LEGEND**

APPLICATION SITE

|  |   |   |                        |                              |  |
|--|---|---|------------------------|------------------------------|--|
|  | PROJECT<br>PROPOSED TEMPORARY PLACE OF RECREATION, SPORTS OR CULTURE, BARBECUE SITE, SHOP AND SERVICES WITH ANCILLARY FACILITIES FOR A PERIOD OF 3 YEARS AND ASSOCIATED FILLING OF LAND | ADDRESS<br>VARIOUS LOTS IN D.D. 117 AND ADJOINING GOVERNMENT LAND, TAI TONG, YUEN LONG, NEW TERRITORIES | SCALE<br>1 : 1500 @ A4 | TITLE<br>EXISTING RUN-IN/OUT |  |
|  |   |   | DRAWN BY<br>MN         | DATE<br>7.3.2024             |  |
|  |   | REVISED BY  |                        | DATE                         |  |



- NOTE:**
- 1) CATCHPIT (CP4 AND CP21) WITH DESILTING FACILITY SHALL FOLLOW CEDD STANDARD DRAWING NO. C24061.
  - 2) CATCHPIT AND UC FOLLOWS TYPICAL DETAILS OF GEOTECHNICAL MANUAL FOR SLOPE FIG.8.10 AND FIG.8.11 RESPECTIVELY.
  - 3) ALL U-CHANNELS ARE COVERED BY IRON CAST.
  - 4) THE INVERTED LEVEL OF THE CONNECTION POINT SHALL BE VERIFIED ON SITE PRIOR THE COMMENCEMENT OF WORK.

Drawing No. **ANNEX**  
Ver. **02**

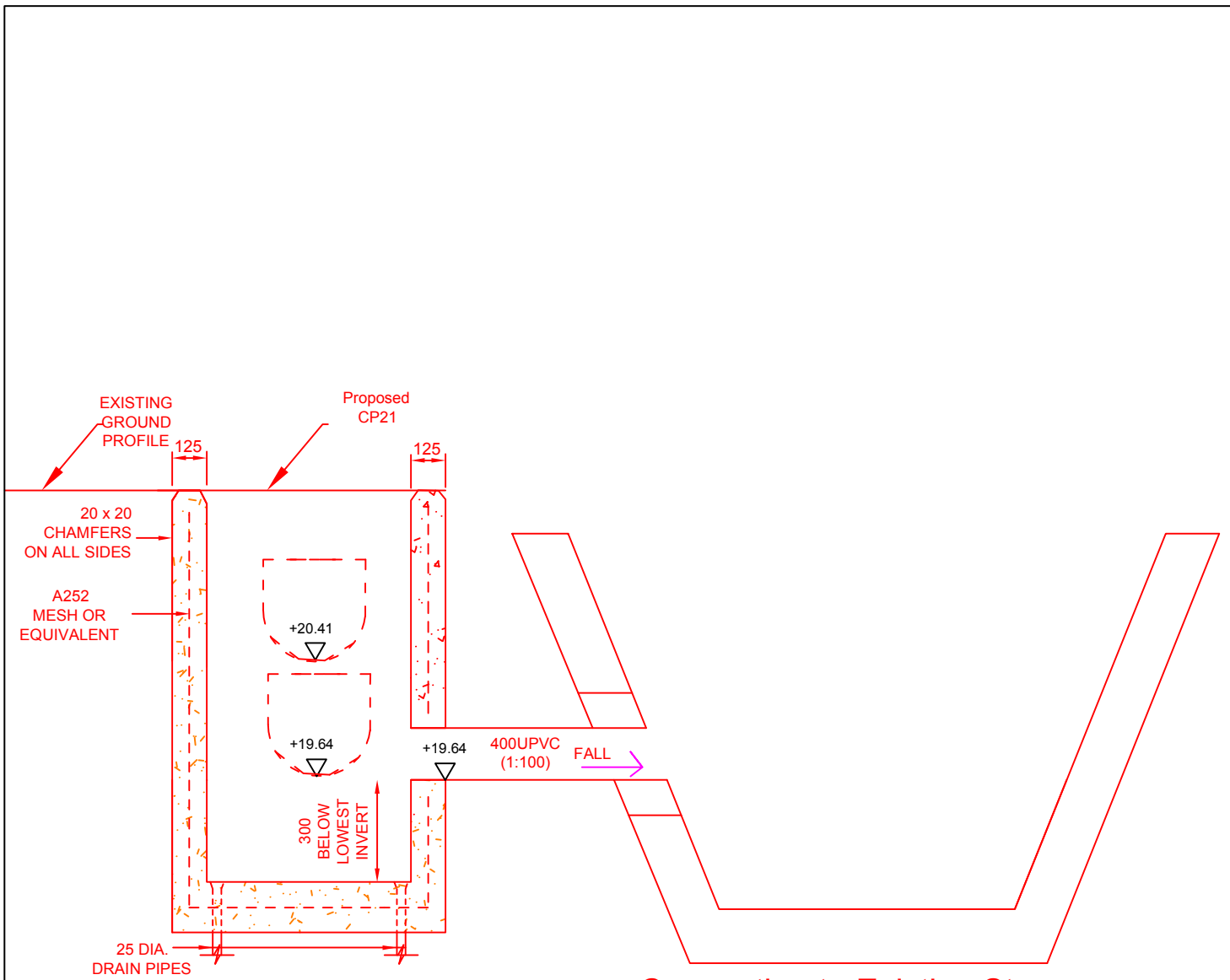
Project  
**PROPOSED TEMPORARY PLACE OF RECREATION, SPORTS OR CULTURE (HOBBY FARM) FOR A PERIOD OF 3 YEARS AND LAND FILLING**  
 LOT 1330 (PART) AND VARIOUS LOTS IN D.D. 117 AND ADJOINING GOVERNMENT LAND (Application No.: AYL-TT/607)

Drawing Title  
**DRAINAGE PROPOSAL**

Scale of A4  
**1 : 1000**

|         |            |
|---------|------------|
| Drawn   | Date       |
|         | 20.03.2024 |
| Revised | Date       |
|         | -----      |





Catchpit With desilting facility

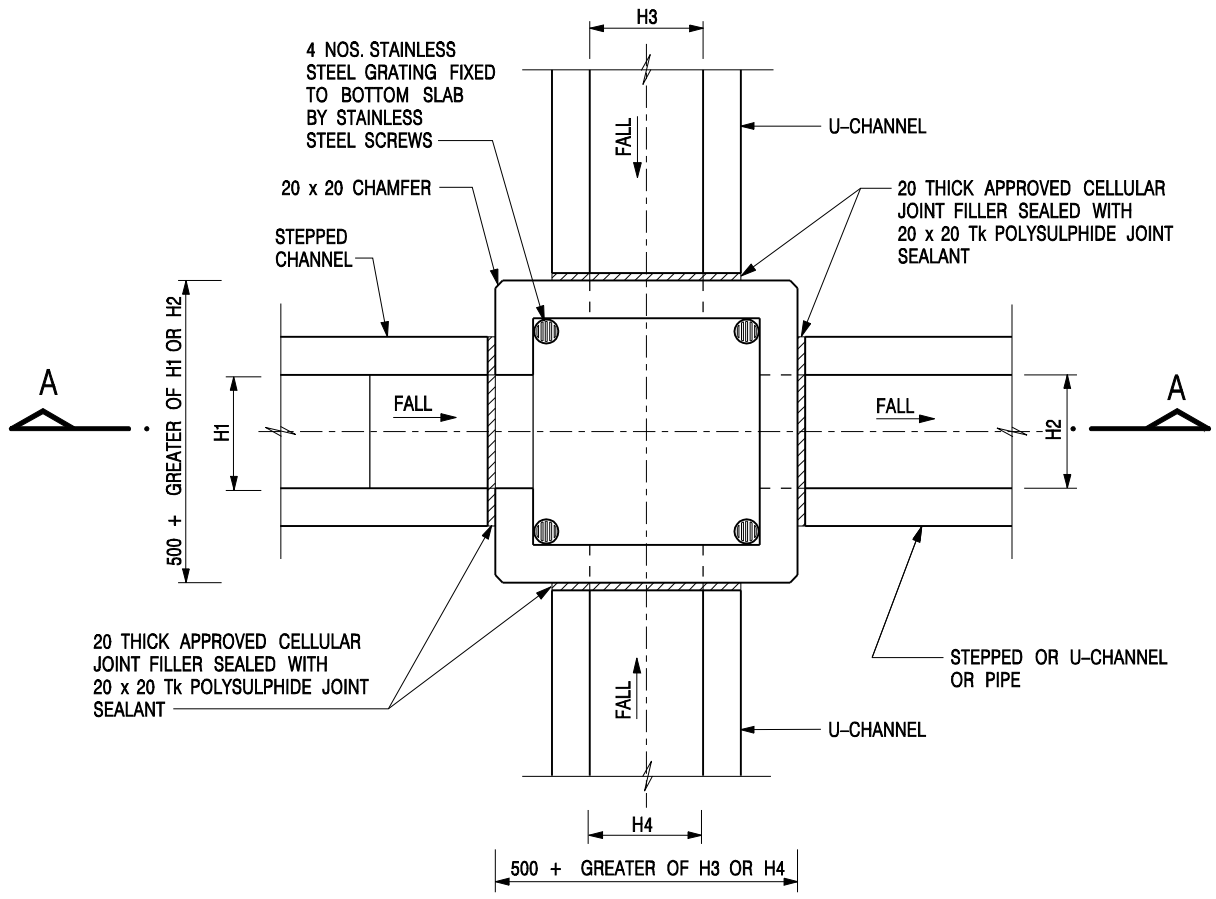
Connection to Existing Stream

Connection Detail of CP21

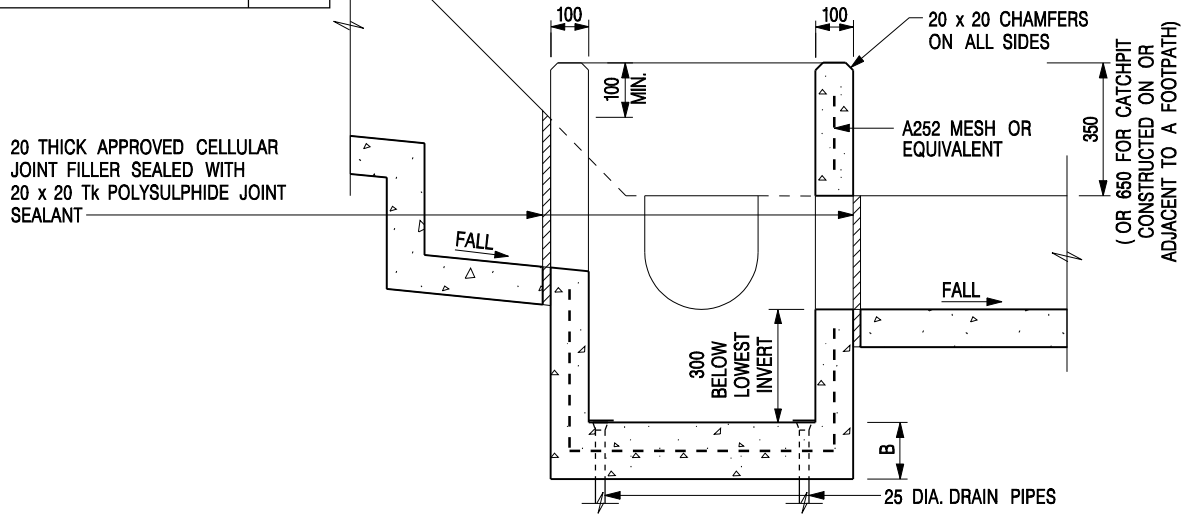
|  |                   |   |  |
|--|-------------------|---|--|
| Drawing No.<br><b>ANNEX</b>  | Ver.<br><b>02</b> | Drawing Title<br><b>Connection Detail</b> |  |
| Project<br>PROPOSED TEMPORARY PLACE OF RECREATION, SPORTS OR CULTURE (HOBBY FARM) FOR A PERIOD OF 3 YEARS AND LAND FILLING |                   | Scale of A4<br><b>1 : 1000</b>            |  |
| LOT 1330 (PART) AND VARIOUS LOTS IN D.D. 117 AND ADJOINING GOVERNMENT LAND (Application No.: A/YL-TT/607)                  |                   | Drawn<br>Date<br><b>18.03.2024</b>        |  |
|  |                   | Revised<br>Date<br><b>18.03.2024</b>      |  |

### Catchpit Schedule

| Catchpit | CL     | IL     |  | Catchpit    | CL     | IL     |
|----------|--------|--------|--|-------------|--------|--------|
| CP1      | +30.00 | +29.55 |  | CP16        | +21.20 | +20.68 |
| CP2      | +30.00 | +29.41 |  | CP17        | +21.20 | +20.40 |
| CP3      | +30.00 | +29.39 |  | CP18        | +21.20 | +20.17 |
| CP4      | +30.00 | +29.14 |  | CP19        | +21.20 | +19.95 |
| CP5      | +30.20 | +29.02 |  | CP20        | +21.20 | +19.90 |
| CP6      | +30.20 | +28.84 |  | CP21        | +21.20 | +19.64 |
| CP7      | +30.20 | +28.65 |  | CP22        | +21.20 | +20.53 |
| CP8      | +27.70 | +27.33 |  | CP23        | +21.20 | +20.59 |
| CP9      | +27.70 | +27.89 |  | CP24        | +21.20 | +20.83 |
| CP10     | +27.70 | +27.73 |  | CP25        | +23.40 | +23.08 |
| CP11     | +27.70 | +27.59 |  | CP26        | +27.70 | +27.32 |
| CP12     | +23.40 | +23.03 |  | CP27        | +27.70 | +27.52 |
| CP13     | +23.40 | +22.95 |  | CP28        | +27.70 | +27.75 |
| CP14     | +23.40 | +22.84 |  | CP29        | +27.70 | +27.83 |
| CP15     | +21.20 | +20.83 |  | Start Point | +30.00 | +29.63 |



| NOMINAL SIZE<br>(LARGEST OF H1, H2, H3 & H4) | B   |
|--|-----|
| 300 - 600                                    | 150 |
| 675 - 900                                    | 175 |



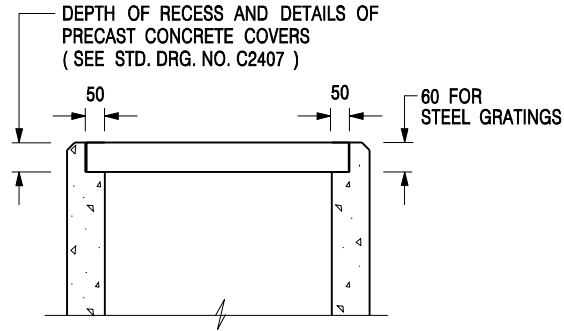
- NOTES:**
1. ALL DIMENSIONS ARE IN MILLIMETRES.
  2. REFER TO SHEET 2 FOR OTHER NOTES.

|      |                         |                 |         |
|------|-------------------------|-----------------|---------|
| -    | FORMER DRG. NO. C2406J. | Original Signed | 03.2015 |
| REF. | REVISION                | SIGNATURE       | DATE    |

**CATCHPIT WITH TRAP**  
**(SHEET 1 OF 2)**

**CEDD** CIVIL ENGINEERING AND DEVELOPMENT DEPARTMENT

**SCALE** 1 : 20 **DRAWING NO.** C2406 /1  
**DATE** JAN 1991




**ALTERNATIVE TOP SECTION  
FOR PRECAST CONCRETE COVERS / GRATINGS**

**NOTES:**

1. ALL DIMENSIONS ARE IN MILLIMETRES.
2. ALL CONCRETE SHALL BE GRADE 20 /20.
3. CONCRETE SURFACE FINISH SHALL BE CLASS U2 OR F2 AS APPROPRIATE.
4. FOR DETAILS OF JOINT, REFER TO STD. DRG. NO. C2413.
5. CONCRETE TO BE COLOURED AS SPECIFIED.
6. UNLESS REQUESTED BY THE MAINTENANCE PARTY AND AS DIRECTED BY THE ENGINEER, CATCHPIT WITH TRAP IS NORMALLY NOT PREFERRED DUE TO PONDING PROBLEM.
7. UPON THE REQUEST FROM MAINTENANCE PARTY, DRAIN PIPES AT CATCHPIT BASE CAN BE USED BUT THIS IS FOR CATCHPITS LOCATED AT SLOPE TOE ONLY AND AS DIRECTED BY THE ENGINEER.
8. FOR CATCHPITS CONSTRUCTED ON OR ADJACENT TO A FOOTPATH, STEEL GRATINGS ( SEE DETAIL 'A' ON STD. DRG. NO. C2405 ) OR CONCRETE COVERS ( SEE STD. DRG. NO. C2407 ) SHALL BE PROVIDED AS DIRECTED BY THE ENGINEER.
9. IF INSTRUCTED BY THE ENGINEER, HANDRAILING ( SEE DETAIL 'G' ON STD. DRG. NO. C2405; EXCEPT ON THE UPSLOPE SIDE ) IN LIEU OF STEEL GRATINGS OR CONCRETE COVERS CAN BE ACCEPTED AS AN ALTERNATIVE SAFETY MEASURE FOR CATCHPITS NOT ON A FOOTPATH NOR ADJACENT TO IT. TOP OF THE HANDRAILING SHALL BE 1 000 mm MIN. MEASURED FROM THE ADJACENT GROUND LEVEL.
10. MINIMUM INTERNAL CATCHPIT WIDTH SHALL BE 1 000 mm FOR CATCHPITS WITH A HEIGHT EXCEEDING 1 000 mm MEASURED FROM THE INVERT LEVEL TO THE ADJACENT GROUND LEVEL. AND, STEP IRONS ( SEE DSD STD. DRG. NO. DS1043 ) AT 300 c/c STAGGERED SHALL BE PROVIDED. THICKNESS OF CATCHPIT WALL FOR INSTALLATION OF STEP IRONS SHALL BE INCREASED TO 150 mm.
11. FOR RETROFITTING AN EXISTING CATCHPIT WITH STEEL GRATING, SEE DETAIL 'F' ON STD. DRG. NO. C2405.
12. SUBJECT TO THE APPROVAL OF THE ENGINEER, OTHER MATERIALS CAN ALSO BE USED AS COVERS / GRATINGS.

|             |                         |                  |             |
|-------------|-------------------------|------------------|-------------|
| -           | FORMER DRG. NO. C2406J. | Original Signed  | 03.2015     |
| <b>REF.</b> | <b>REVISION</b>         | <b>SIGNATURE</b> | <b>DATE</b> |

**CATCHPIT WITH TRAP  
(SHEET 2 OF 2)**

|   |                    |
|---|--------------------|
|  <b>CIVIL ENGINEERING AND<br/>DEVELOPMENT DEPARTMENT</b> |                    |
| <b>SCALE</b> 1 : 20   | <b>DRAWING NO.</b> |
| <b>DATE</b> JAN 1991  | <b>C2406 /2</b>    |

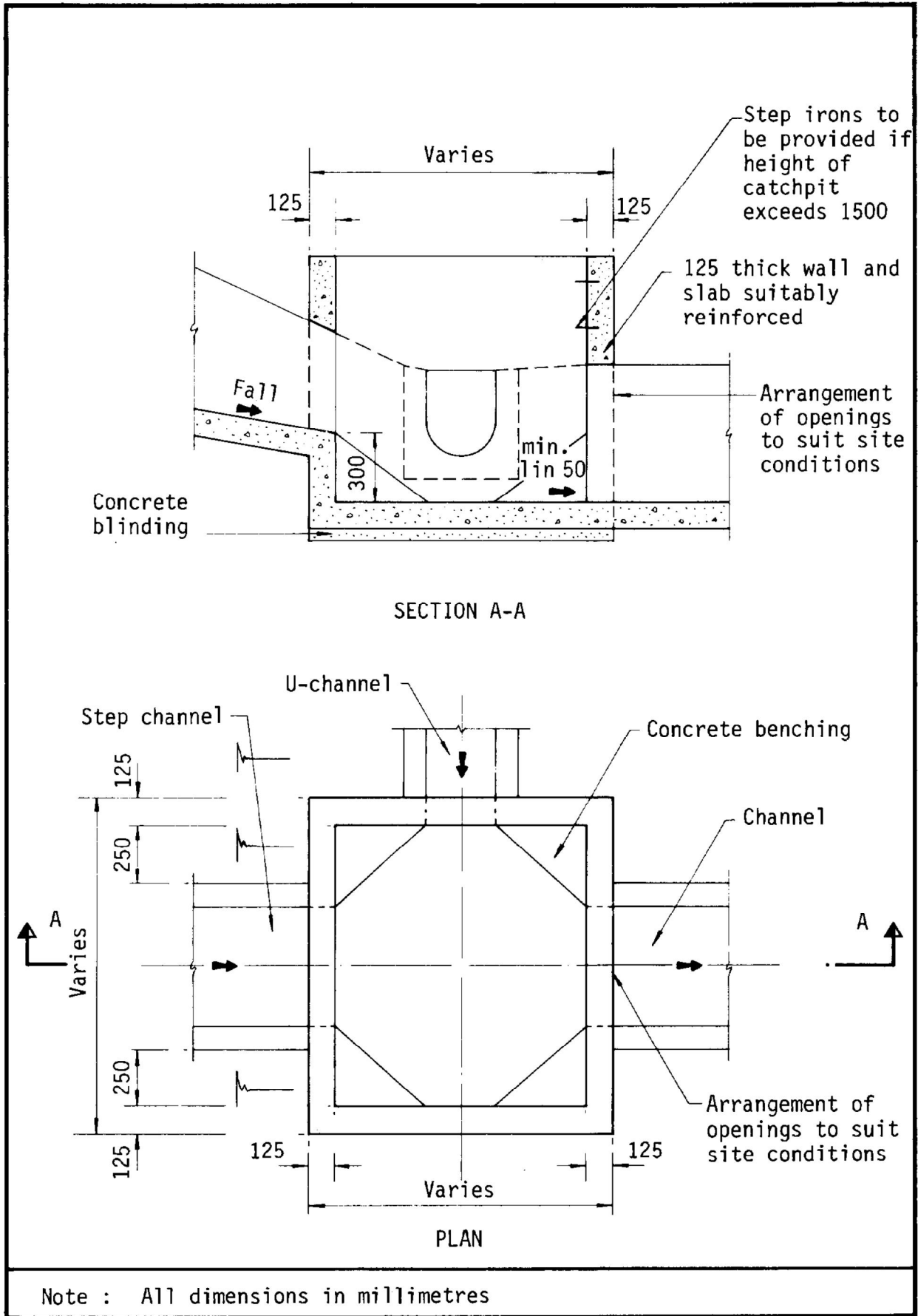
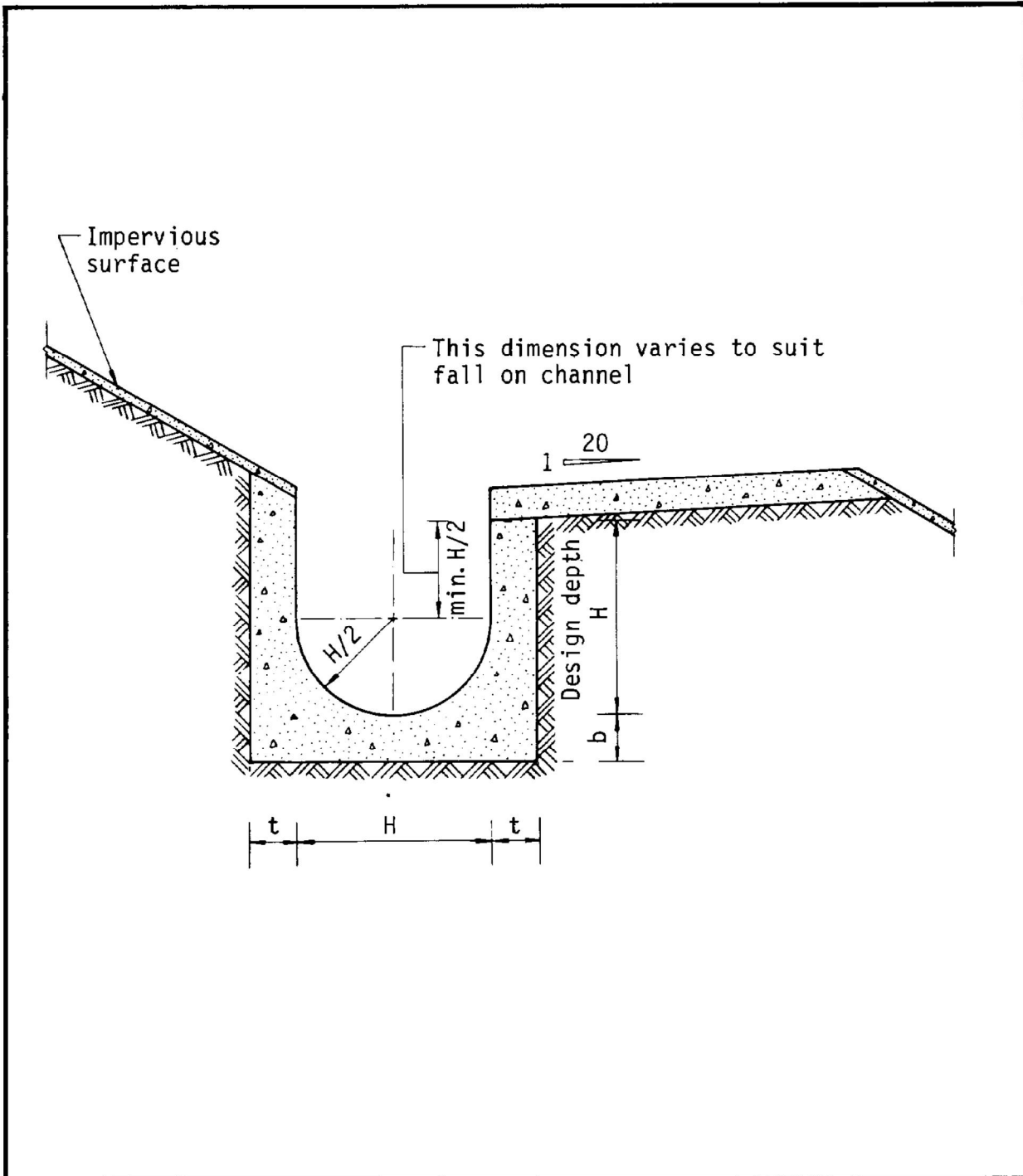


Figure 8.10 - Typical Details of Catchpits



Dimensions of U - channel

| Nominal size of channel H (mm) | Thickness t (mm) | Thickness b (mm) |
|--------------------------------|------------------|------------------|
| 225 to 600                     | 150              | 150              |
| 675 to 1200                    | 175              | 225              |

Figure 8.11 - Typical U-channel Details





**DEVELOPMENT PARAMETERS**

|                       |                         |         |
|-----------------------|-------------------------|---------|
| APPLICATION SITE AREA | : 17,923 m <sup>2</sup> | (ABOUT) |
| COVERED AREA          | : 2,824 m <sup>2</sup>  | (ABOUT) |
| UNCOVERED AREA        | : 15,099 m <sup>2</sup> | (ABOUT) |
| PLOT RATIO            | : 0.16                  | (ABOUT) |
| SITE COVERAGE         | : 16 %                  | (ABOUT) |
| NO. OF STRUCTURE      | : 28                    |         |
| DOMESTIC GFA          | : NOT APPLICABLE        |         |
| NON-DOMESTIC GFA      | : 2,824 m <sup>2</sup>  | (ABOUT) |
| TOTAL GFA             | : 2,824 m <sup>2</sup>  | (ABOUT) |
| BUILDING HEIGHT       | : 2.5 m - 6 m           | (ABOUT) |
| NO. OF STOREY         | : 1                     |         |

**PARKING AND LOADING / UNLOADING PROVISIONS**

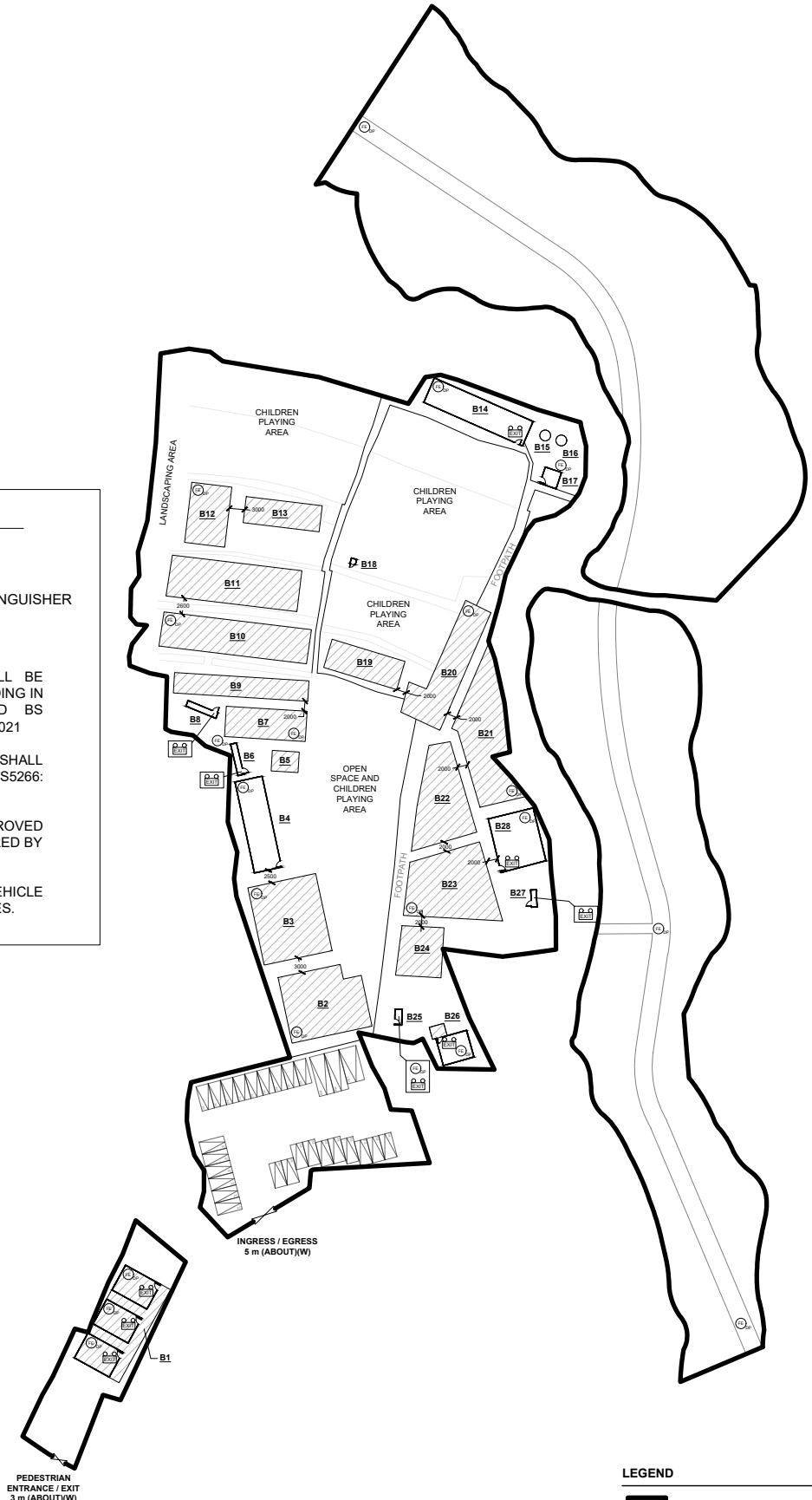
|   |                       |
|---|-----------------------|
| NO. OF PRIVATE CAR                        |                       |
| PARKING SPACE                             | : 25                  |
| DIMENSION OF PARKING SPACE                | : 2.5m (W) X 5 m (L)  |
| NO. OF L/UL SPACE FOR MINIBUS             | : 2                   |
| DIMENSION OF L/UL SPACE                   | : 3 m (W) X 8 m (L)   |
| NO. OF L/UL SPACE FOR LIGHT GOODS VEHICLE | : 1                   |
| DIMENSION OF L/UL SPACE                   | : 3.5 m (W) X 7 m (L) |

**FIRE SERVICE INSTALLATIONS**




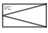



-  EXIT SIGN AND EMERGENCY LIGHT
-  5 KG DRY POWDER TYPE FIRE EXTINGUISHER


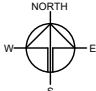
**FS NOTES:**

- SUFFICIENT EMERGENCY LIGHTING SHALL BE PROVIDED THROUGHOUT THE ENTIRE BUILDING IN ACCORDANCE WITH BS5266-1:2016 AND BS EN1838:2013 AND FSD CIRCULAR LETTER 6/2021
- SUFFICIENT DIRECTIONAL AND EXIT SIGN SHALL BE PROVIDED IN ACCORDANCE WITH BS5266: PART 1 AND FSD CIRCULAR LETTER 5/2008.
- PORTABLE HAND-OPERATED APPROVED APPLIANCE SHALL BE PROVIDED AS REQUIRED BY OCCUPANCY.
- ACCESS IS PROVIDED FOR EMERGENCY VEHICLE TO REACH 30m OF ALL PART OF STRUCTURES.





**LEGEND**

-  APPLICATION SITE
-  STRUCTURE (ENCLOSED)
-  STRUCTURE (SHED STRUCTURE)
-  PARKING SPACE (PC)
-  L/UL SPACE (MB)
-  L/UL SPACE (LGV)
-  INGRESS / EGRESS

|   |   |   |                        |                              |  |
|---|---|---|------------------------|------------------------------|--|
| PLANNING CONSULTANT<br> | PROJECT<br>PROPOSED TEMPORARY PLACE OF RECREATION, SPORTS OR CULTURE, BARBECUE SITE, SHOP AND SERVICES WITH ANCILLARY FACILITIES FOR A PERIOD OF 3 YEARS AND ASSOCIATED FILLING OF LAND | ADDRESS<br>VARIOUS LOTS IN D.D. 117 AND ADJOINING GOVERNMENT LAND, TAI TONG, YUEN LONG, NEW TERRITORIES | SCALE<br>1 : 1000 @ A4 | TITLE<br>FSIs PROPOSAL (1/2) | NORTH<br> |
|   |   |   | DRAWN BY<br>MN         | DATE<br>7.3.2024             |  |
|   |   |   | REVISED BY<br>DATE     |                              |  |

## FIRE COMPARTMENT CALCULATION

| STRUCTURE | USE   | SQ.M                       | BUILDING HEIGHT | CU.M                         |
|-----------|---|----------------------------|-----------------|------------------------------|
| B1        | STORAGE OF TOOLS  | 215 m <sup>2</sup> (ABOUT) | 4 m (ABOUT)     | 860 m <sup>3</sup> (ABOUT)   |
| B2        | RECEPTION AND SHOP AND SERVICES                             | 205 m <sup>2</sup> (ABOUT) | 3.5 m (ABOUT)   | 717.5 m <sup>3</sup> (ABOUT) |
| B3        | RAIN SHELTER FOR BBQ ACTIVITIES                             | 215 m <sup>2</sup> (ABOUT) | 3.5 m (ABOUT)   | 752.5 m <sup>3</sup> (ABOUT) |
| B4        | COVERED CHILDREN PLAYING AREA                               | 104 m <sup>2</sup> (ABOUT) | 3.5 m (ABOUT)   | 364 m <sup>3</sup> (ABOUT)   |
| B5        | RAIN SHELTER  | 22 m <sup>2</sup> (ABOUT)  | 3 m (ABOUT)     | 66 m <sup>3</sup> (ABOUT)    |
| B6        | PORTABLE TOILET   | 9 m <sup>2</sup> (ABOUT)   | 2.5 m (ABOUT)   | 22.5 m <sup>3</sup> (ABOUT)  |
| B7        | RAIN SHELTER FOR BBQ ACTIVITIES                             | 96 m <sup>2</sup> (ABOUT)  | 3.5 m (ABOUT)   | 336 m <sup>3</sup> (ABOUT)   |
| B8        | PORTABLE TOILET   | 9 m <sup>2</sup> (ABOUT)   | 2.5 m (ABOUT)   | 22.5 m <sup>3</sup> (ABOUT)  |
| B9        | RAIN SHELTER FOR BBQ ACTIVITIES                             | 108 m <sup>2</sup> (ABOUT) | 3.5 m (ABOUT)   | 378 m <sup>3</sup> (ABOUT)   |
| B10       | RAIN SHELTER FOR BBQ ACTIVITIES AND RECREATIONAL ACTIVITIES | 202 m <sup>2</sup> (ABOUT) | 3.5 m (ABOUT)   | 707 m <sup>3</sup> (ABOUT)   |
| B11       | RAIN SHELTER FOR BBQ ACTIVITIES AND RECREATIONAL ACTIVITIES | 213 m <sup>2</sup> (ABOUT) | 3.5 m (ABOUT)   | 752.5 m <sup>3</sup> (ABOUT) |
| B12       | RAIN SHELTER FOR BBQ ACTIVITIES AND RECREATIONAL ACTIVITIES | 96 m <sup>2</sup> (ABOUT)  | 3.5 m (ABOUT)   | 336 m <sup>3</sup> (ABOUT)   |
| B13       | RAIN SHELTER FOR BBQ ACTIVITIES AND RECREATIONAL ACTIVITIES | 79 m <sup>2</sup> (ABOUT)  | 3.5 m (ABOUT)   | 276.5 m <sup>3</sup> (ABOUT) |
| B14       | RAIN SHELTER FOR BBQ ACTIVITIES                             | 116 m <sup>2</sup> (ABOUT) | 3.5 m (ABOUT)   | 406 m <sup>3</sup> (ABOUT)   |
| B15       | WATER TANK FOR LANDSCAPING USE                              | 4 m <sup>2</sup> (ABOUT)   | 6 m (ABOUT)     | 24 m <sup>3</sup> (ABOUT)    |
| B16       | WATER TANK FOR LANDSCAPING USE                              | 4 m <sup>2</sup> (ABOUT)   | 6 m (ABOUT)     | 24 m <sup>3</sup> (ABOUT)    |
| B17       | STORAGE OF TOOLS  | 13 m <sup>2</sup> (ABOUT)  | 3 m (ABOUT)     | 39 m <sup>3</sup> (ABOUT)    |
| B18       | STORAGE OF TOOLS  | 2 m <sup>2</sup> (ABOUT)   | 3 m (ABOUT)     | 6 m <sup>3</sup> (ABOUT)     |
| B19       | RAIN SHELTER FOR BBQ ACTIVITIES AND RECREATIONAL ACTIVITIES | 88 m <sup>2</sup> (ABOUT)  | 3.5 m (ABOUT)   | 308 m <sup>3</sup> (ABOUT)   |
| B20       | RAIN SHELTER FOR BBQ ACTIVITIES                             | 164 m <sup>2</sup> (ABOUT) | 3.5 m (ABOUT)   | 574 m <sup>3</sup> (ABOUT)   |
| B21       | RAIN SHELTER FOR BBQ ACTIVITIES                             | 224 m <sup>2</sup> (ABOUT) | 3.5 m (ABOUT)   | 784 m <sup>3</sup> (ABOUT)   |
| B22       | RAIN SHELTER FOR BBQ ACTIVITIES                             | 173 m <sup>2</sup> (ABOUT) | 3.5 m (ABOUT)   | 605.5 m <sup>3</sup> (ABOUT) |
| B23       | RAIN SHELTER FOR BBQ ACTIVITIES                             | 223 m <sup>2</sup> (ABOUT) | 3.5 m (ABOUT)   | 780.5 m <sup>3</sup> (ABOUT) |
| B24       | RAIN SHELTER FOR BBQ ACTIVITIES                             | 86 m <sup>2</sup> (ABOUT)  | 3.5 m (ABOUT)   | 301 m <sup>3</sup> (ABOUT)   |
| B25       | GUARD HOUSE   | 5 m <sup>2</sup> (ABOUT)   | 2.5 m (ABOUT)   | 12.5 m <sup>3</sup> (ABOUT)  |
| B26       | STORAGE OF TOOLS  | 43 m <sup>2</sup> (ABOUT)  | 3 m (ABOUT)     | 129 m <sup>3</sup> (ABOUT)   |
| B27       | PORTABLE TOILET   | 4 m <sup>2</sup> (ABOUT)   | 2.5 m (ABOUT)   | 10 m <sup>3</sup> (ABOUT)    |
| B28       | STORAGE OF TOOLS AND BBQ PITS                               | 102 m <sup>2</sup> (ABOUT) | 3.5 m (ABOUT)   | 357 m <sup>3</sup> (ABOUT)   |

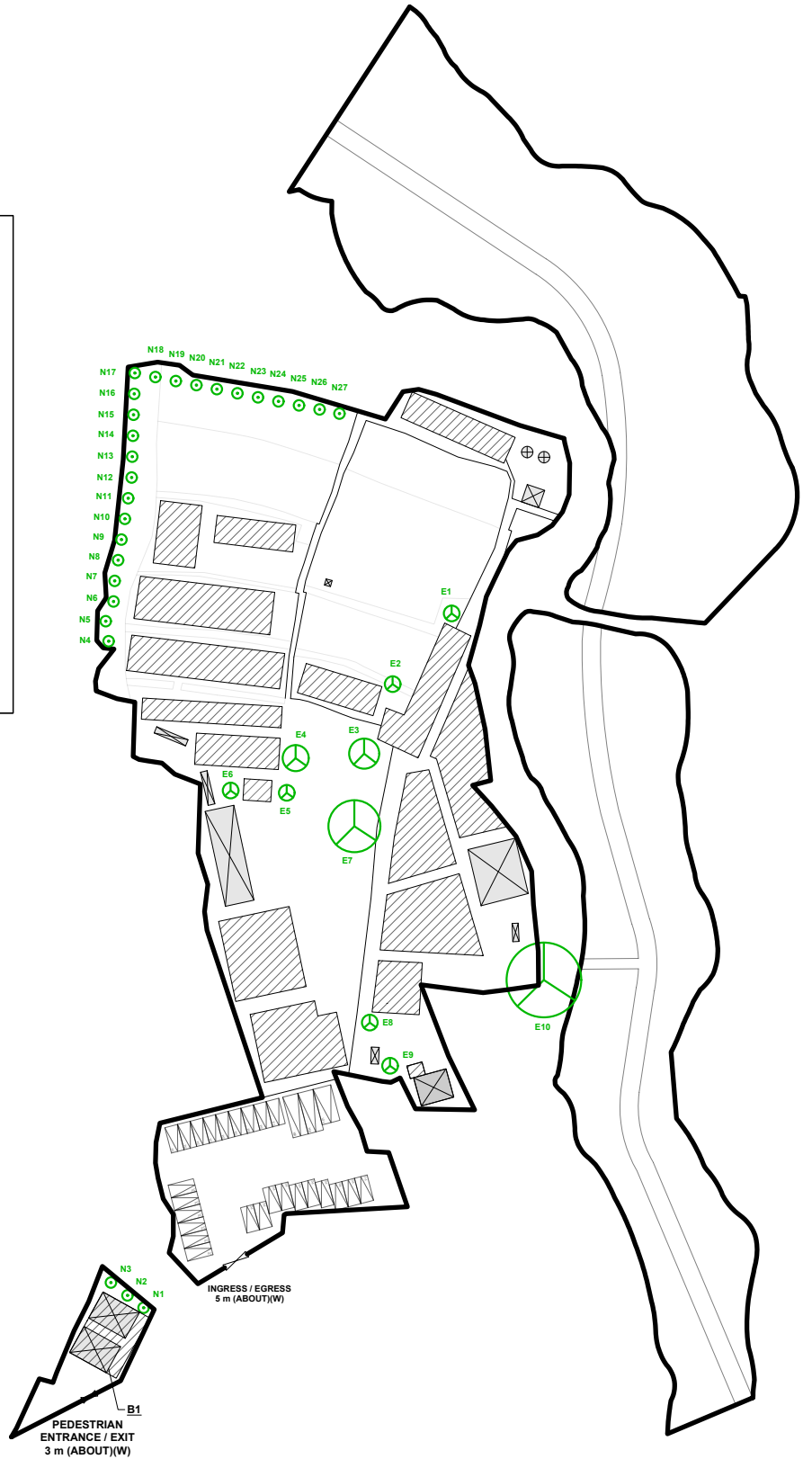
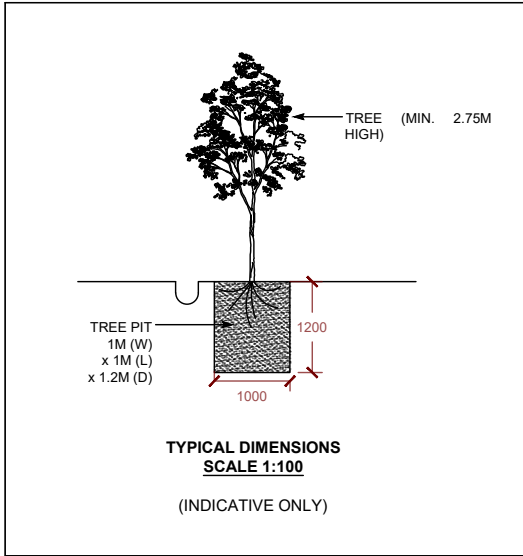
|   |   |   |                |                  |                              |             |   |
|---|---|---|----------------|------------------|------------------------------|-------------|---|
| PLANNING CONSULTANT<br> | PROJECT<br>PROPOSED TEMPORARY PLACE OF RECREATION, SPORTS OR CULTURE, BARBECUE SITE, SHOP AND SERVICES WITH ANCILLARY FACILITIES FOR A PERIOD OF 3 YEARS AND ASSOCIATED FILLING OF LAND | ADDRESS<br>VARIOUS LOTS IN D.D. 117 AND ADJOINING GOVERNMENT LAND, TAI TONG, YUEN LONG, NEW TERRITORIES | SCALE<br>-     |                  | TITLE<br>FSIs PROPOSAL (2/2) |             |  |
|   |   |   | DRAWN BY<br>MN | DATE<br>7.3.2024 | DWG NO.<br>APP III           | VER.<br>001 |   |

**TREE PRESERVATION AND LANDSCAPE PROPOSAL**

APPLICATION SITE AREA : 17,660 m<sup>2</sup> (ABOUT)

NO. OF EXISTING TREES WILL BE PRESERVED  
 - NO. OF TREES : 10 (E1 - E10)

NO. OF NEW TREES WILL BE PLANTED  
 - NO. OF BAUHINIA BLAKEANA : 27 (N1 - N27)  
 - SPACING OF TREES : NOT MORE THAN 3 m  
 - HEIGHT OF TREES : NOT LESS THAN 2.75 m  
 - DIMENSION OF TREE PITS : 1m (W) X 1m (L) X 1.2m (D)



**LEGEND**

- APPLICATION SITE
- STRUCTURE (ENCLOSED)
- STRUCTURE (SHED STRUCTURE)
- PARKING SPACE (PC)
- L/UL SPACE (MB)
- L/UL SPACE (LGV)
- INGRESS / EGRESS
- EXISTING TREE
- NEW TREE

**NOTES:**

- 1) THE APPLICANT WILL MAINTAIN TREES IN GOOD CONDITION DURING THE PLANNING APPROVAL PERIOD.
- 2) THE APPLICANT WILL REPLACE TREES WHICH ARE DYING OR DEAD DURING THE PLANNING APPROVAL PERIOD.
- 3) THE APPLICANT WILL PROVIDE ADEQUATE IRRIGATION FOR TREES.

PLANNING CONSULTANT



PROJECT

PROPOSED TEMPORARY PLACE OF RECREATION, SPORTS OR CULTURE, BARBECUE SITE, SHOP AND SERVICES WITH ANCILLARY FACILITIES FOR A PERIOD OF 3 YEARS AND ASSOCIATED FILLING OF LAND

ADDRESS

VARIOUS LOTS IN D.D. 117 AND ADJOINING GOVERNMENT LAND, TAI TONG, YUEN LONG, NEW TERRITORIES

SCALE  
1 : 1300 @ A4

DRAWN BY  
MN

DATE  
26.7.2023

REVISED BY  
OL

DATE  
11.3.2024

TITLE

TREE PRESERVATION AND LANDSCAPE PROPOSAL

DWG NO.  
APP IV

VER.  
001

