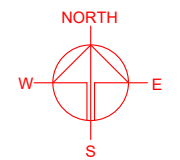


**LOCATION OF THE APPLICATION SITE**  
 APPLICATION SITE AREA : 86 m<sup>2</sup> (ABOUT)  
**VEHICULAR ACCESS**  
 ACCESSIBLE FROM TAI TONG ROAD VIA NAM HANG TSUEN ROAD AND A LOCAL ACCESS

ACCESSIBLE FROM SAN TAM ROAD VIA A LOCAL ACCESS

APPLICATION SITE

\*SITE BOUNDARY FOR IDENTIFICATION PURPOSE ONLY



PLANNING CONSULTANT  
 R-Riches  
 Property Consultants Ltd

PROJECT  
 PROPOSED TEMPORARY SHOP AND SERVICES WITH ANCILLARY FACILITIES FOR A PERIOD OF 5 YEARS

SITE LOCATION  
 LOT 127 (PART) IN D.D. 118, NAM HANG TSUEN, TAI TONG, YUEN LONG, NEW TERRITORIES

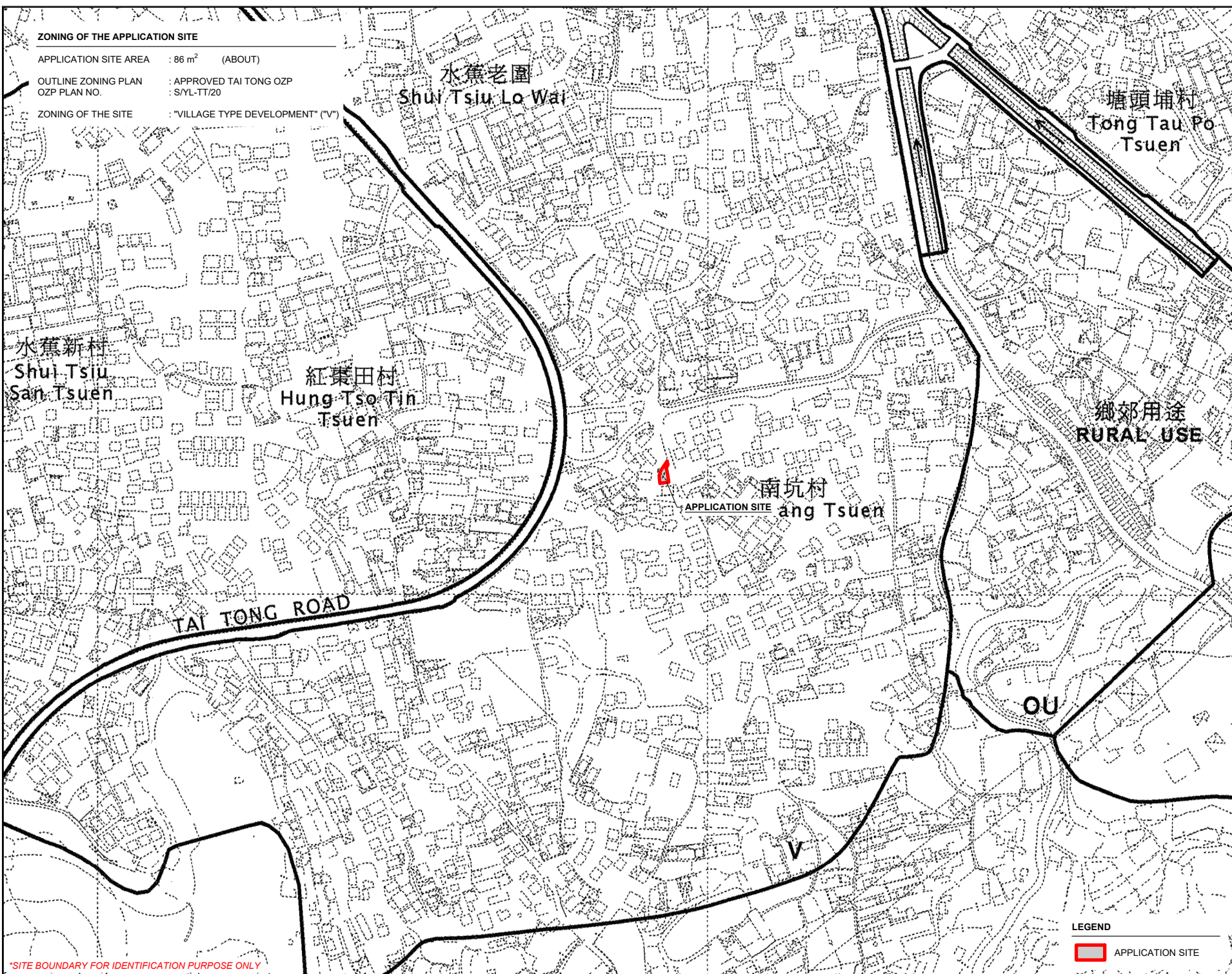
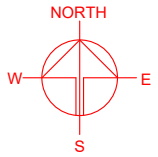
SCALE  
 1: 1000 @ A4  
 DRAWN BY: MN DATE: 17.6.2024  
 REVISED BY: DATE:  
 APPROVED BY: DATE:

DWG. TITLE  
 LOCATION PLAN  
 DWG. NO. PLAN 1 VER. 001

**LEGEND**  
 APPLICATION SITE

**ZONING OF THE APPLICATION SITE**

APPLICATION SITE AREA : 86 m<sup>2</sup> (ABOUT)  
 OUTLINE ZONING PLAN : APPROVED TAI TONG OZP  
 OZP PLAN NO. : S/YL-TT/20  
 ZONING OF THE SITE : "VILLAGE TYPE DEVELOPMENT" ("V")



\*SITE BOUNDARY FOR IDENTIFICATION PURPOSE ONLY

**LEGEND**

APPLICATION SITE

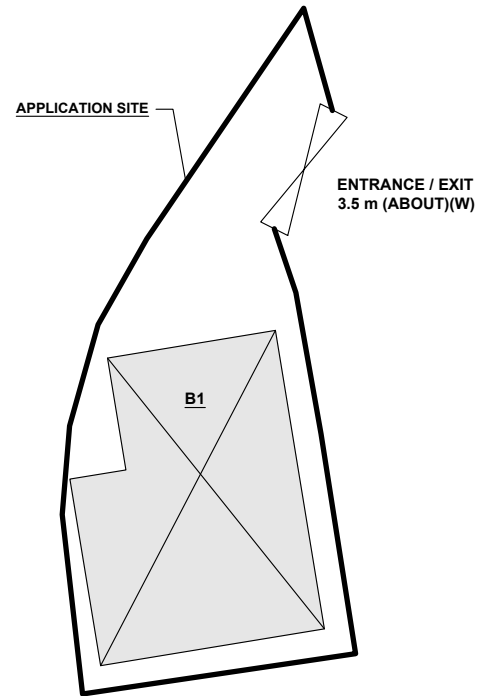
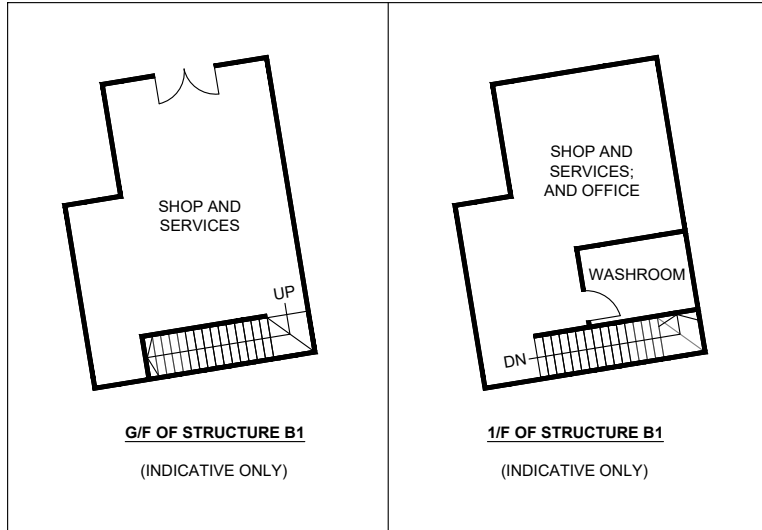
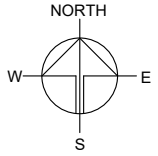
PLANNING CONSULTANT	
PROJECT	
PROPOSED TEMPORARY SHOP AND SERVICES WITH ANCILLARY FACILITIES FOR A PERIOD OF 5 YEARS	
SITE LOCATION	
LOT 127 (PART) IN D.D. 118, NAM HANG TSUEN, TAI TONG, YUEN LONG, NEW TERRITORIES	
SCALE	
1 : 4000 @ A4	
DRAWN BY	DATE
MN	17.6.2024
REVISED BY	DATE
APPROVED BY	DATE
DWG. TITLE	
ZONING OF THE SITE	
DWG NO.	VER.
PLAN 2	001



**DEVELOPMENT PARAMETERS**

APPLICATION SITE AREA	: 86 m <sup>2</sup>	(ABOUT)
COVERED AREA	: 44 m <sup>2</sup>	(ABOUT)
UNCOVERED AREA	: 42 m <sup>2</sup>	(ABOUT)
PLOT RATIO	: 1.02	(ABOUT)
SITE COVERAGE	: 51 %	(ABOUT)
NO. OF STRUCTURE	: 1	
DOMESTIC GFA	: NOT APPLICABLE	
NON-DOMESTIC GFA	: 88 m <sup>2</sup>	(ABOUT)
TOTAL GFA	: 88 m <sup>2</sup>	(ABOUT)
BUILDING HEIGHT	: 7 m	(ABOUT)
NO. OF STOREY	: 2	

STRUCTURE	USE	COVERED AREA	GFA	BUILDING HEIGHT
B1	SHOP AND SERVICES, OFFICE AND WASHROOM	44 m <sup>2</sup> (ABOUT)	88 m <sup>2</sup> (ABOUT)	7 m (ABOUT)(2-STOREY)
<b>TOTAL</b>		<b>44 m<sup>2</sup> (ABOUT)</b>	<b>88 m<sup>2</sup> (ABOUT)</b>	



**LEGEND**

- APPLICATION SITE
- STRUCTURE
- ENTRANCE / EXIT

NO PARKING SPACE IS PROVIDED AT THE APPLICATION SITE.

PLANNING CONSULTANT



PROJECT

PROPOSED TEMPORARY SHOP AND SERVICES WITH ANCILLARY FACILITIES FOR A PERIOD OF 5 YEARS

SITE LOCATION

LOT 127 (PART) IN D.D. 118, NAM HANG TSUEN, TAI TONG, YUEN LONG, NEW TERRITORIES

SCALE

1 : 200 @ A4

DRAWN BY: MN DATE: 9.7.2024

REVISED BY: DATE:

APPROVED BY: DATE:

DWG. TITLE  
LAYOUT PLAN

DWG NO. VER.  
PLAN 4 002