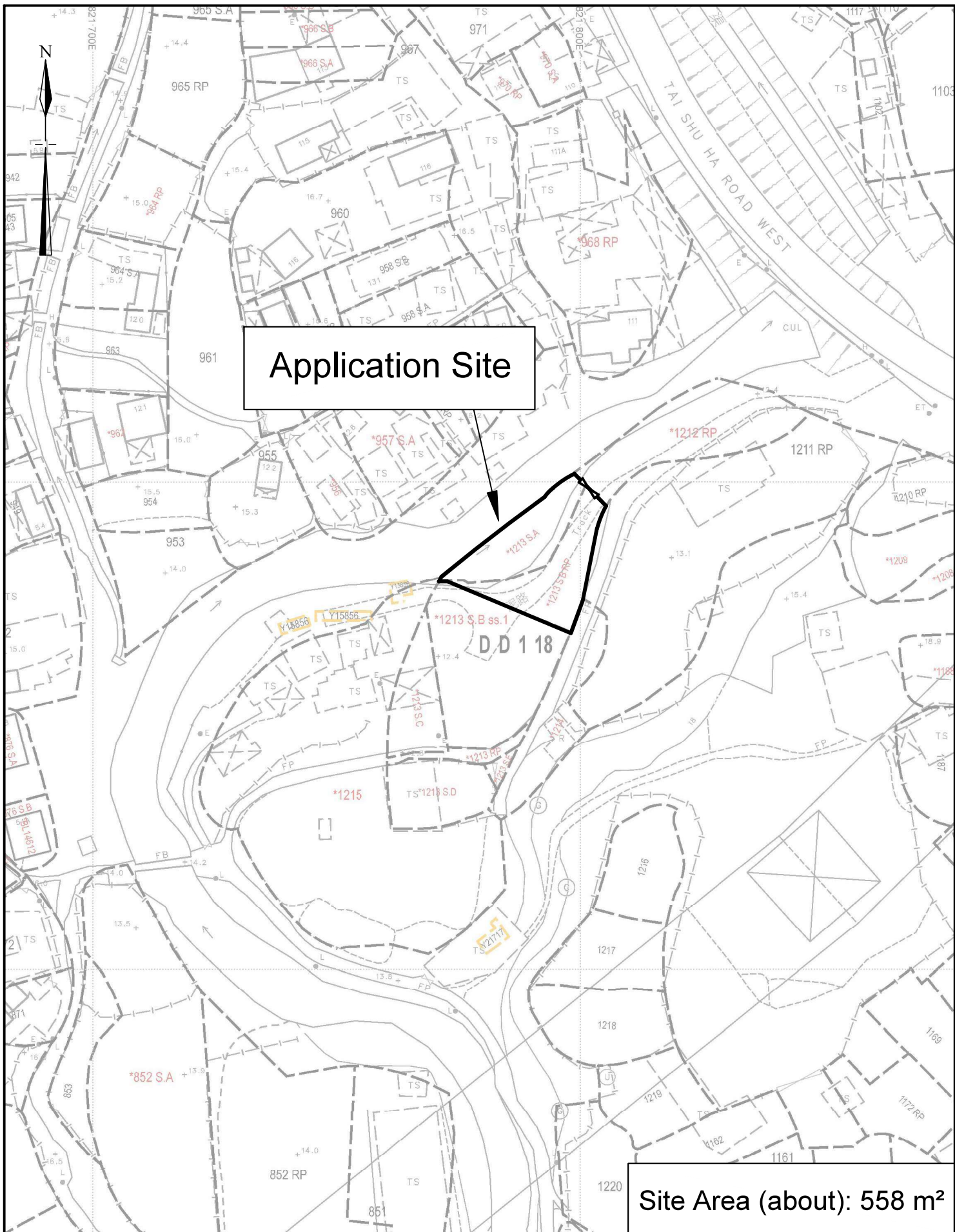


**Extracted from Approved Tai Tong Outline Zoning Plan No. S/YL-TT/20**

<p><b>N.T.S</b></p>	<p><b>Location Plan</b></p>	<p><b>Goldrich Planners &amp; Surveyors Ltd.</b></p>
<p><b>February 2025</b></p>	<p><b>Lots 1213 S.A and 1213 S.B R.P. in D.D. 118 Yuen Long, N.T.</b></p>	<p><b>Plan 1 ( P 22092 )</b></p>



**1:1000 (A4)**

---

**February 2025**

**Lot Index Plan**

---

**Lots 1213 S.A and 1213 S.B R.P. in D.D. 118  
Yuen Long, N.T.**

**Goldrich Planners &  
Surveyors Ltd.**

---

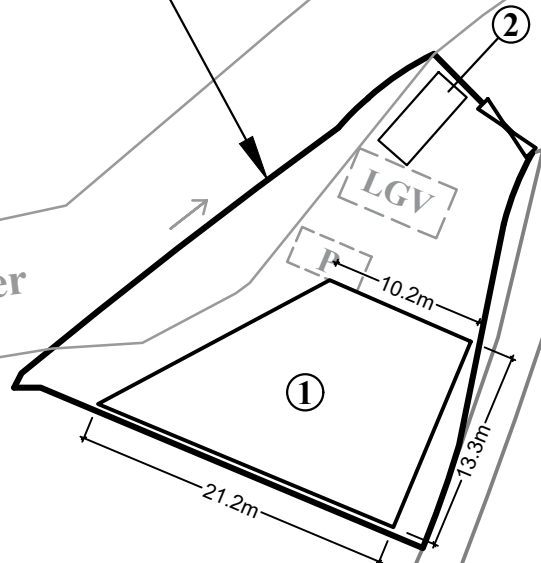
**Plan 2  
( P 22092 )**






Application Site

River

Local Track



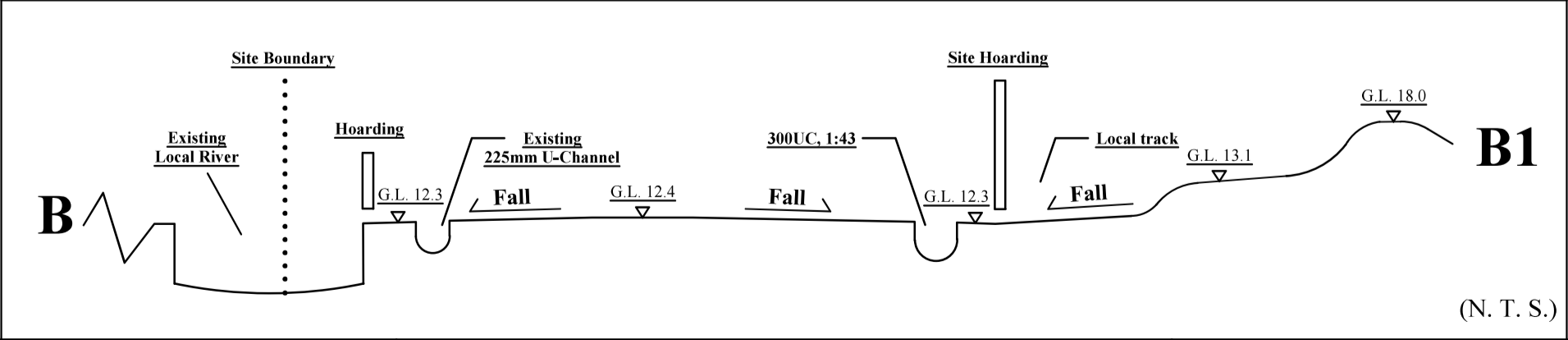
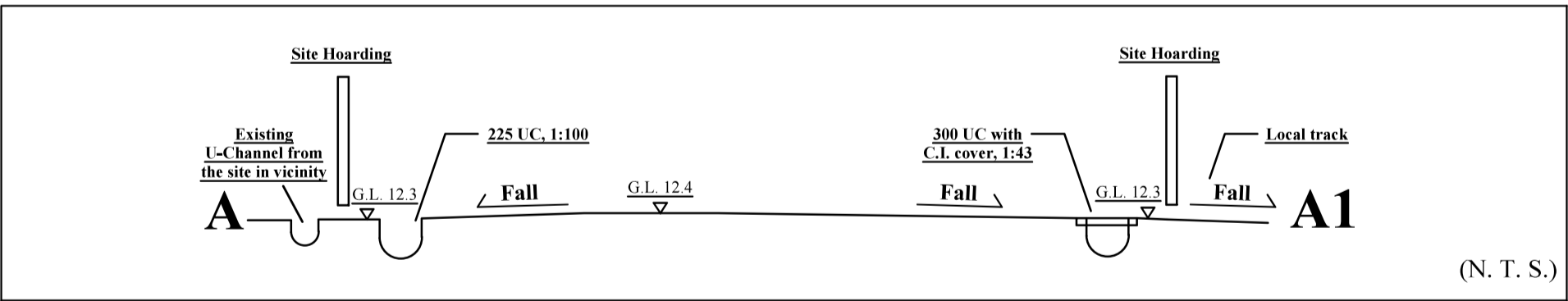
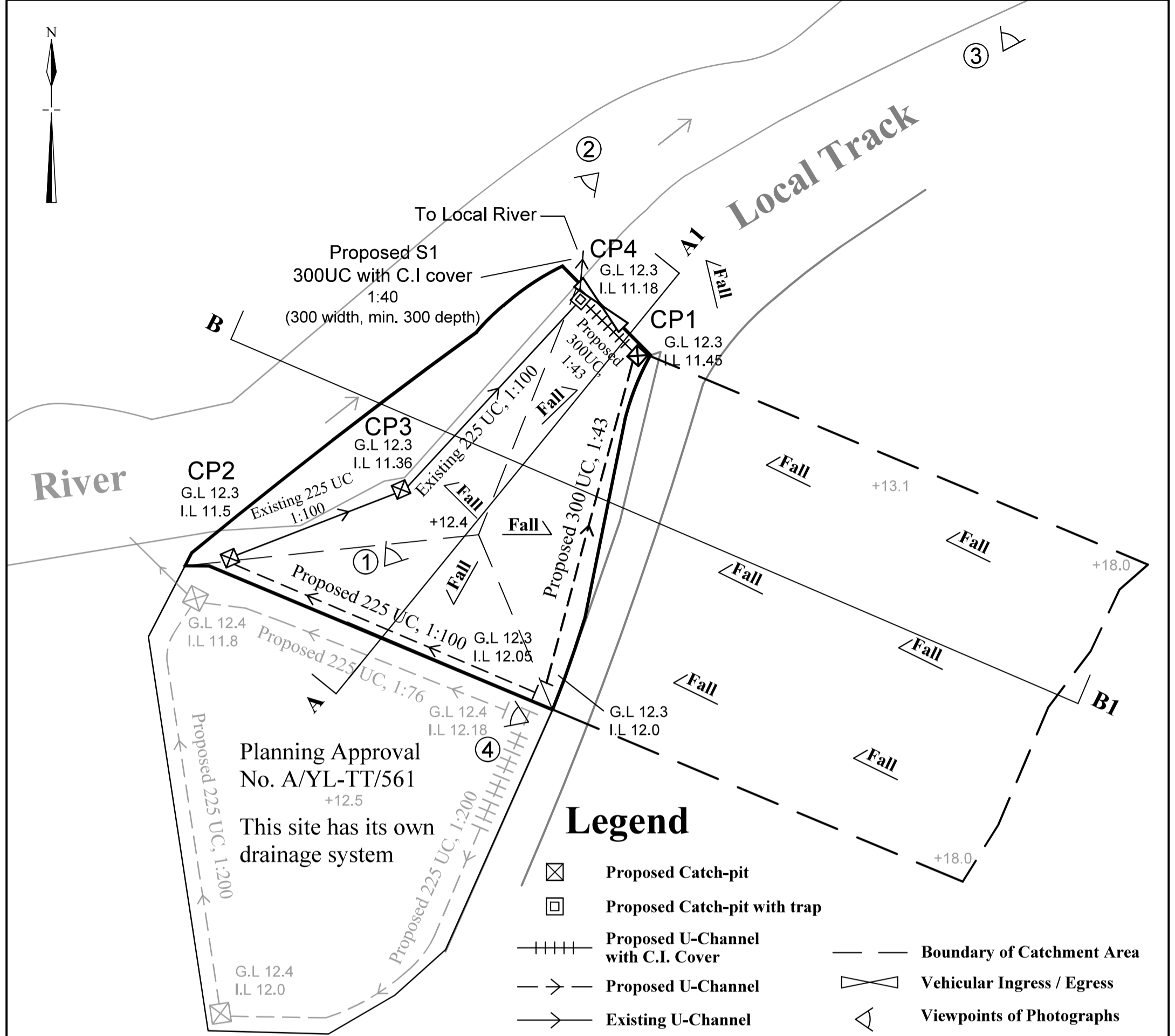
Legend:

-  Vehicular Ingress / Egress
-  Parking space for private cars  
(5m (L) x 2.5m (W))
-  Parking space for light goods vehicles  
(7m (L) x 3.5m (W))

Site Area (about): 558 m<sup>2</sup>

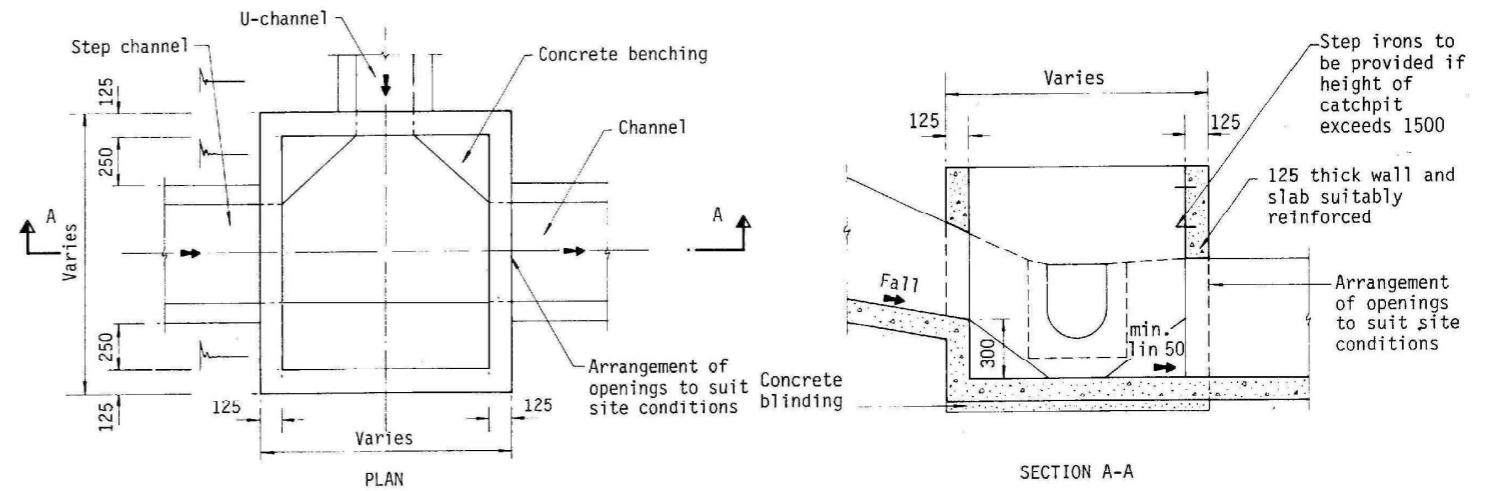
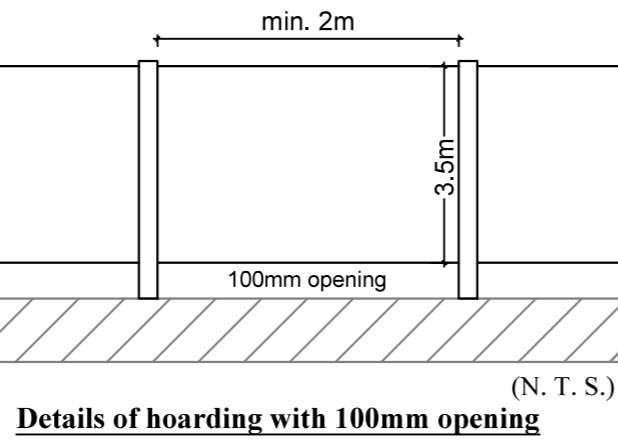
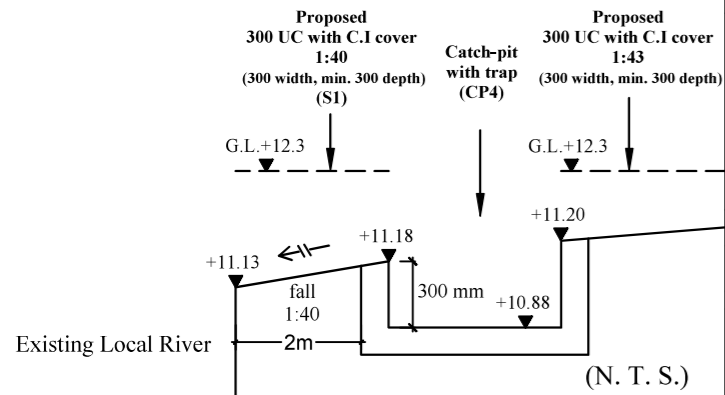
No.	Structure / Use	Covered Area (about)	Floor Area (about)	Height	Storeys
1	Showroom / Shop with Ancillary Office and storage	210m <sup>2</sup>	210m <sup>2</sup>	7.5m	1
2	Showroom / toilet	15m <sup>2</sup>	15m <sup>2</sup>	7.5m	1
	Total:	<u>225m<sup>2</sup></u>	<u>225m<sup>2</sup></u>		

<b>1 : 500 (A4)</b>	<b>Layout Plan</b>	<b>Goldrich Planners &amp; Surveyors Ltd.</b>
<b>March 2025</b>	<b>Lots 1213 S.A and 1213 S.B R.P. in D.D. 118 Yuen Long, N.T.</b>	<b>Plan 3 ( P 22092 )</b>



1:300 (A3)	<b>Approved Drainage Proposal (under A/YL-TT/571)</b>	<b>Goldrich Planners &amp; Surveyors Ltd.</b>
February 2025	Lots 1213 S.A and 1213 S.B R.P. in D.D. 118 Yuen Long, N.T.	<b>Plan 4.1 ( P 22092 )</b>

**Connection details of proposed outfall between CP4, S1 and existing local river**



**TYPICAL DETAILS OF CATCHPIT**

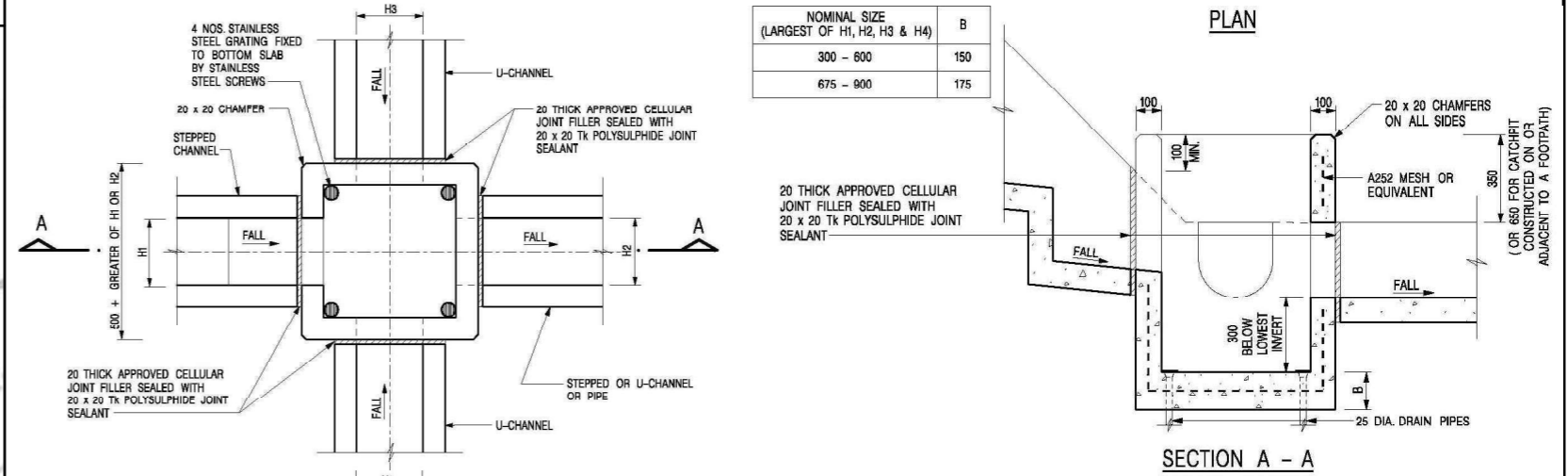
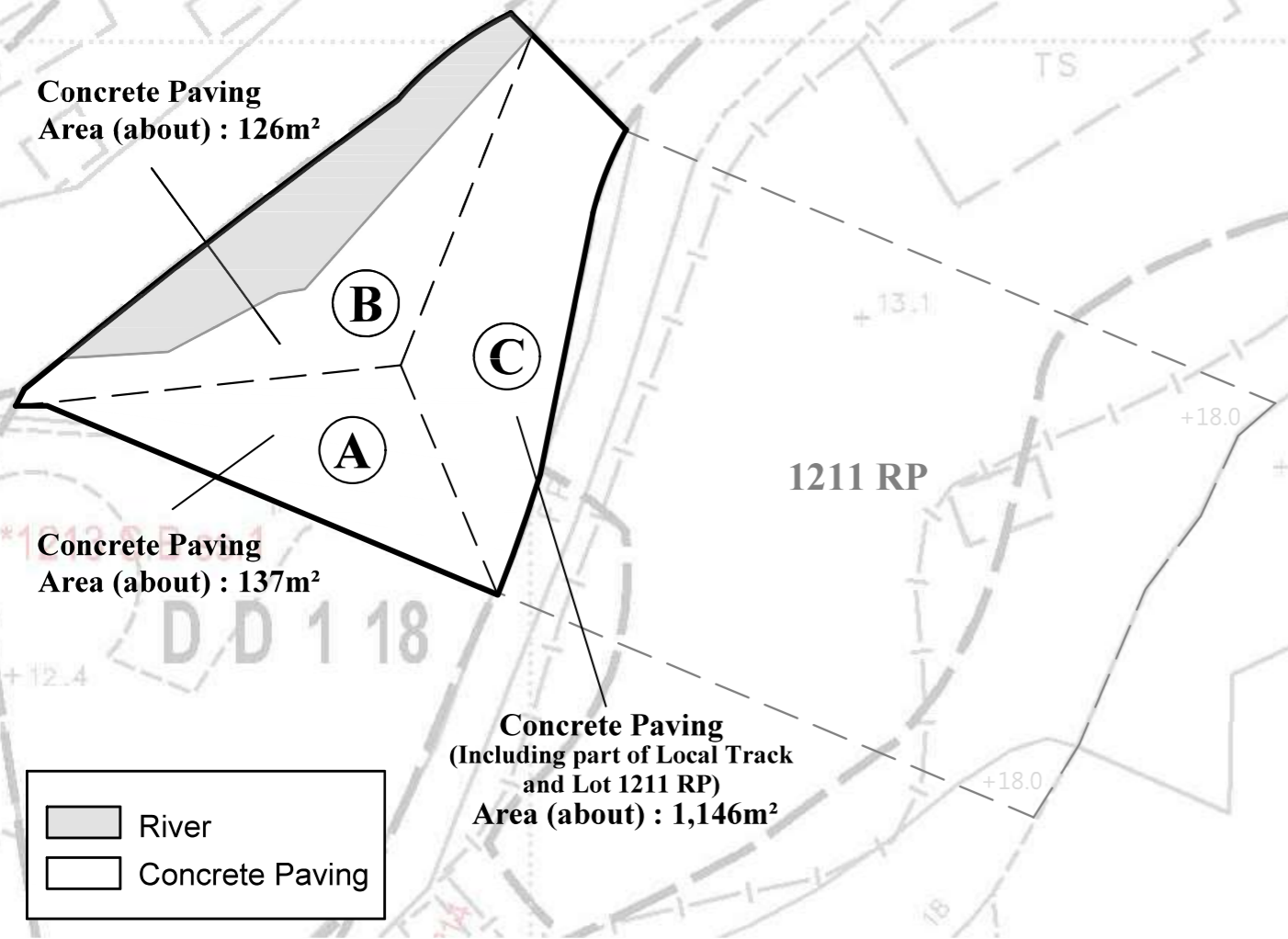
Concrete Paving Area (about) : 126m<sup>2</sup>

Concrete Paving Area (about) : 137m<sup>2</sup>

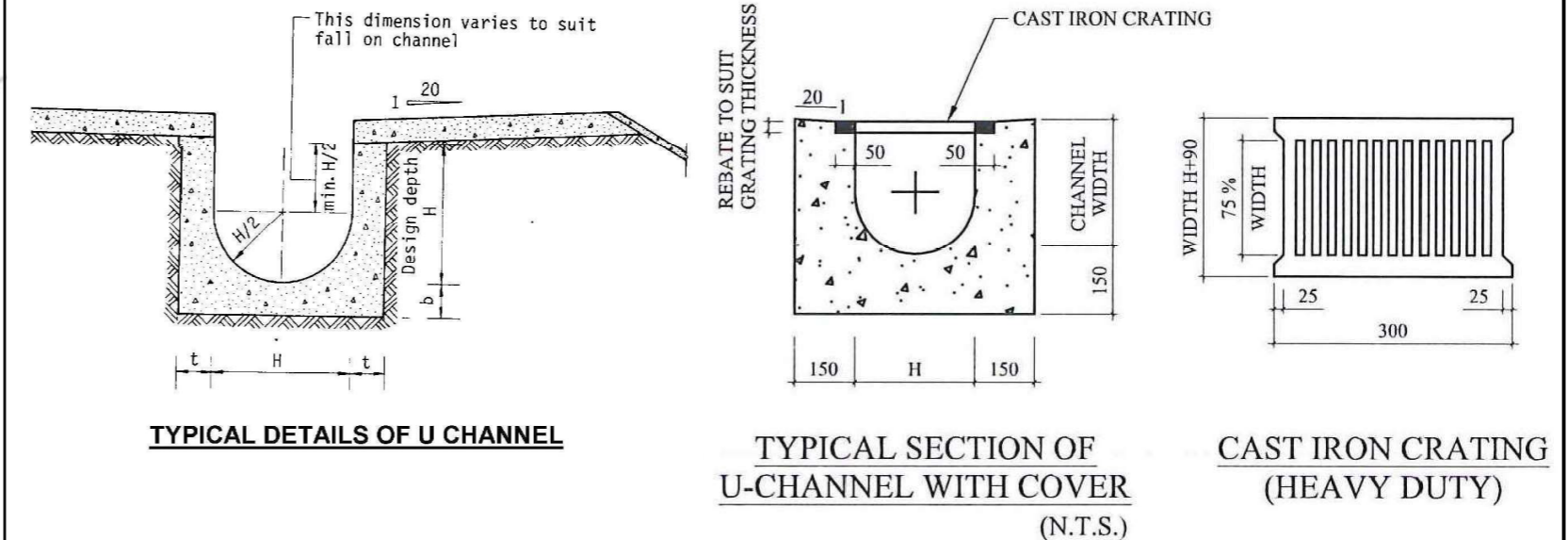
Concrete Paving (Including part of Local Track and Lot 1211 RP) Area (about) : 1,146m<sup>2</sup>

River  
 Concrete Paving

**AREA OF CATCHMENT (N.T.S)**



**DETAILS OF CATCHPIT WITH TRAP (REFER TO CEDD'S STANDARD DWG. C2406/1)**



N.T.S

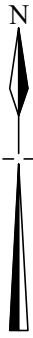
February 2025

**Approved Drainage Proposal (under A/YL-TT/571)**

Lots 1213 S.A and 1213 S.B R.P. in D.D. 118  
 Yuen Long, N.T.

Goldrich Planners & Surveyors Ltd.

Plan 4.2  
 ( P 22092 )



Application Site

River

Local Track

Legend:



Vehicular Ingress / Egress



Parking space for private cars  
(5m (L) x 2.5m (W))



Parking space for light goods vehicles  
(7m (L) x 3.5m (W))



Light goods vehicles  
(7m (L) x 2.5m (W))

Site Area (about): 558 m<sup>2</sup>

1 : 500 (A4)

Swept Path Analysis

Goldrich Planners &  
Surveyors Ltd.

February 2025

Lots 1213 S.A and 1213 S.B R.P. in D.D. 118  
Yuen Long, N.T.

Plan 5  
( P 22092 )