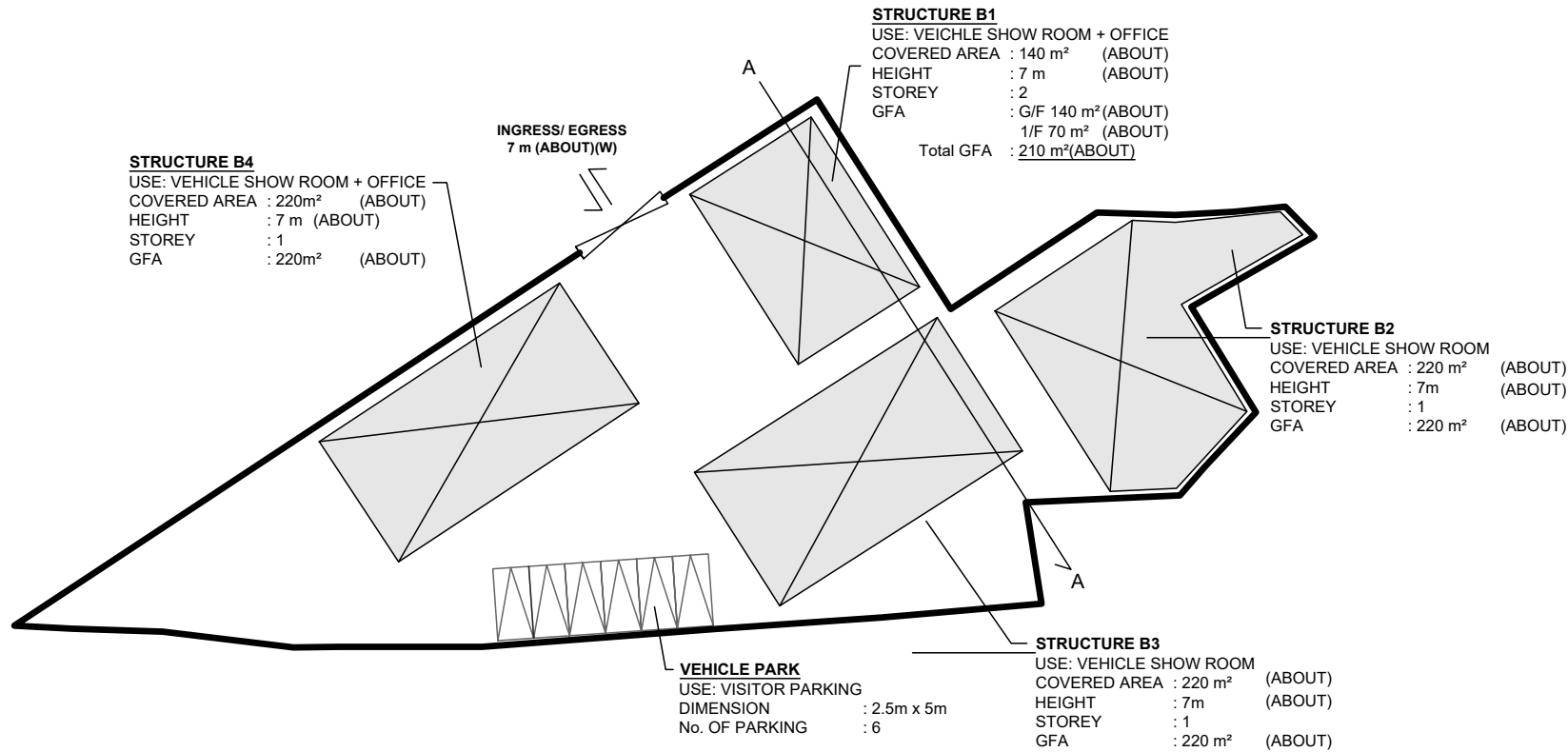
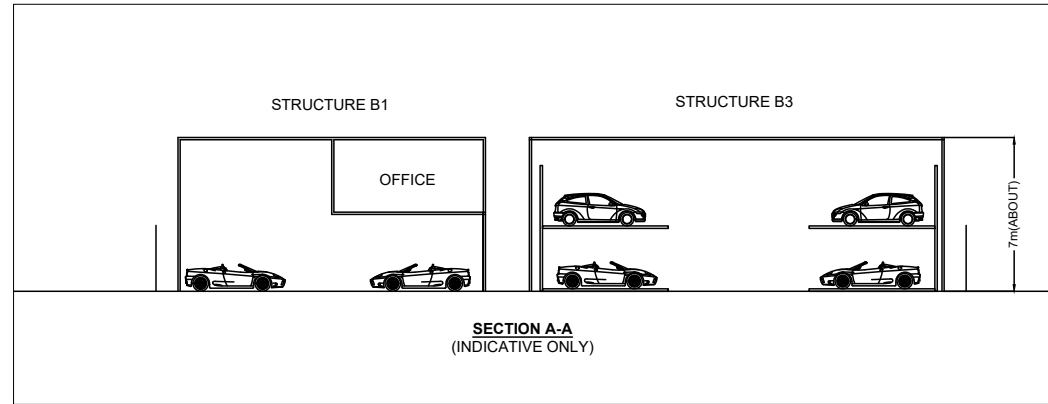


DEVELOPMENT PARAMETERS

APPLICATION SITE AREA	: 1,736 m ²	(ABOUT)
COVERED AREA	: 800 m ²	(ABOUT)
UNCOVERED AREA	: 936 m ²	(ABOUT)
PLOT RATIO	: 0.50	(ABOUT)
SITE COVERAGE	: 46%	(ABOUT)
NO. OF STRUCTURE	: 4	
DOMESTIC GFA	: NOT APPLICABLE	
NON-DOMESTIC GFA	: 870 m ²	(ABOUT)
TOTAL GFA	: 870 m ²	(ABOUT)
BUILDING HEIGHT	: 7 m	(ABOUT)
NO. OF STOREY	: 1 - 2	



LEGEND

- APPLICATION SITE
- STRUCTURE (ENCLOSED)
- PARKING SPACE (PC)
- INGRESS / EGRESS



PROJECT
PROPOSED TEMPORARY SHOP AND SERVICES (VEHICLE SHOW ROOM) WITH ANCILLARY FACILITIES FOR A PERIOD OF 5 YEARS

SITE LOCATION
LOTS 91 S.D(PART), 91 RP(PART), 103 S.C RP(PART) AND 104 RP IN D.D. 121 AND ADJOINING GOVERNMENT LAND, PING SHAN, YUEN LONG, NEW TERRITORIES

SCALE
1 : 500 @ A4

DRAWING TITLE
LAYOUT PLAN

DRAWN BY J.W	DATE 17.6.2024
------------------------	--------------------------

REVISED BY	DATE

DWG NO. PLAN 2	VER. A-1
--------------------------	--------------------