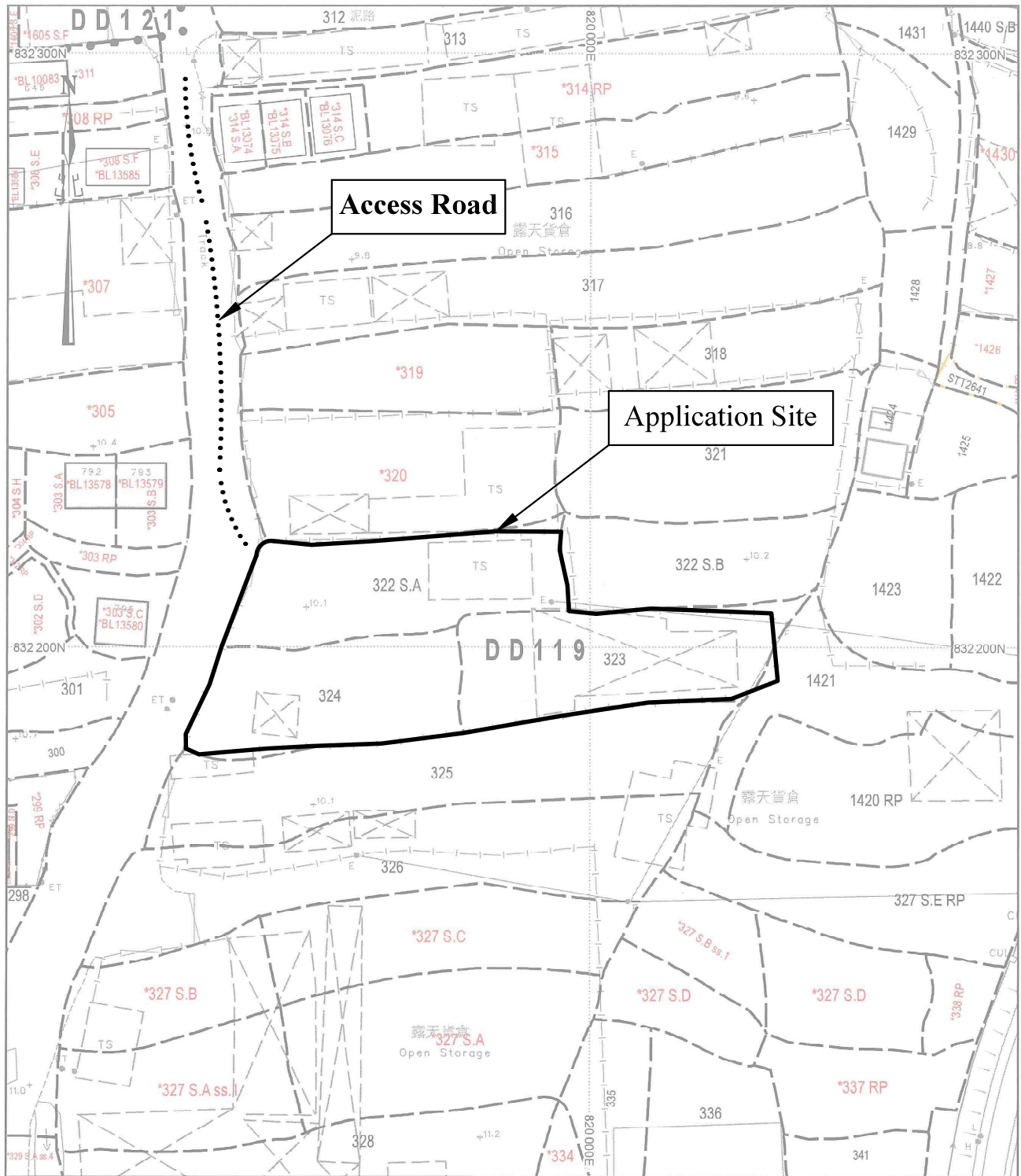


Extracted from Approved Tong Yan San Tsuen Outline Zoning Plan No. S/YL-TYST/14

<p>N.T.S</p>	<p>Location Plan and Outline Zoning Plan</p>	<p>Goldrich Planners & Surveyors Ltd.</p>
<p>July 2024</p>	<p>Lot 322 S.A. (Part), 323 (Part), 324 (Part) and 1421 (Part) in D.D. 119, Tong Yan San Tsuen, Yuen Long New Territories</p>	<p>Plan 1 (P 4072)</p>



Site Area: about 2,445.7m²

1:1000

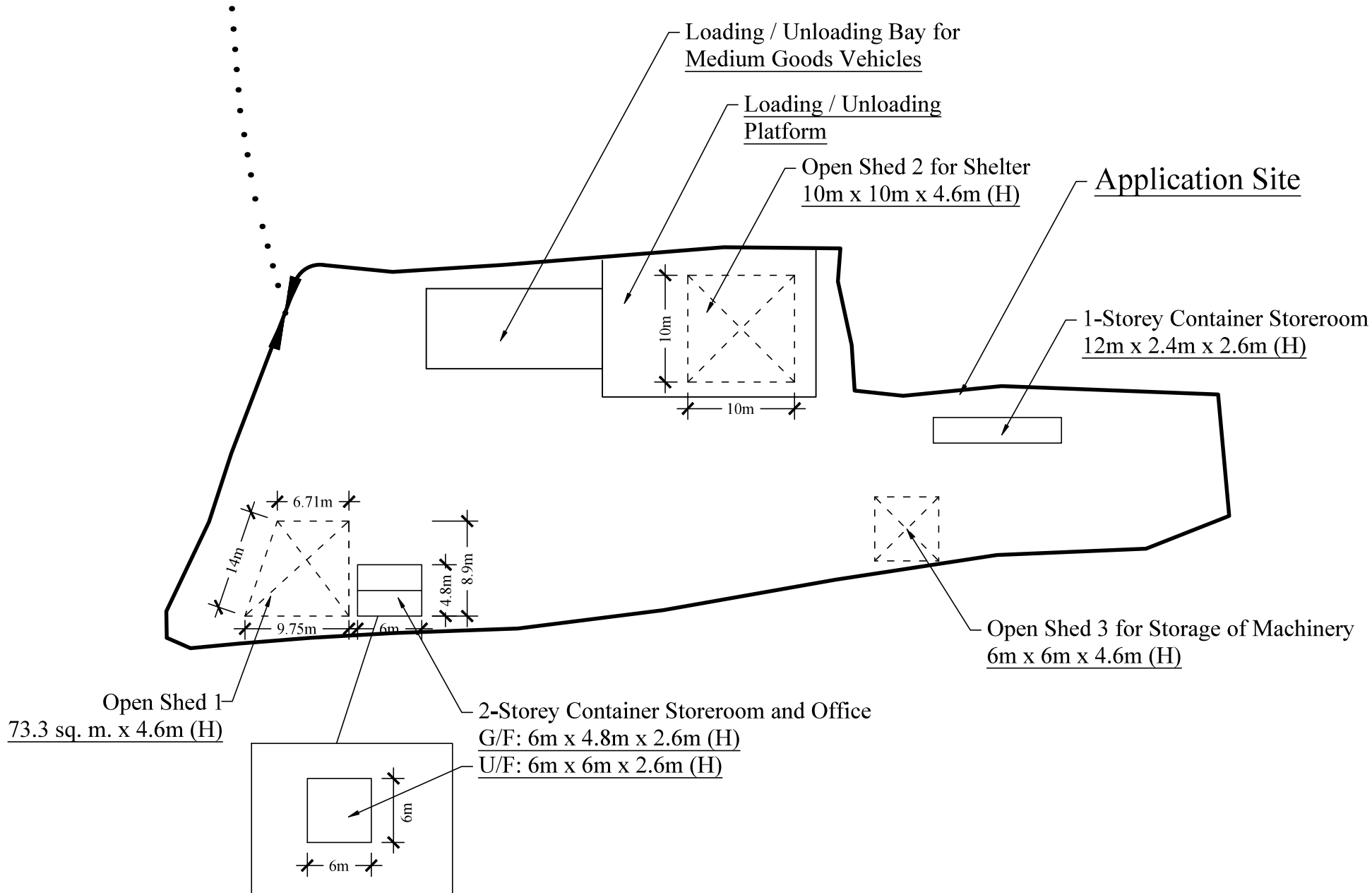
Lot Index Plan

Goldrich Planners & Surveyors Ltd.

July 2024

Lot 322 S.A. (Part), 323 (Part), 324 (Part) and 1421 (Part)
in D.D. 119, Tong Yan San Tsuen, Yuen Long
New Territories

**Plan 2
(P 4072)**



1 : 500

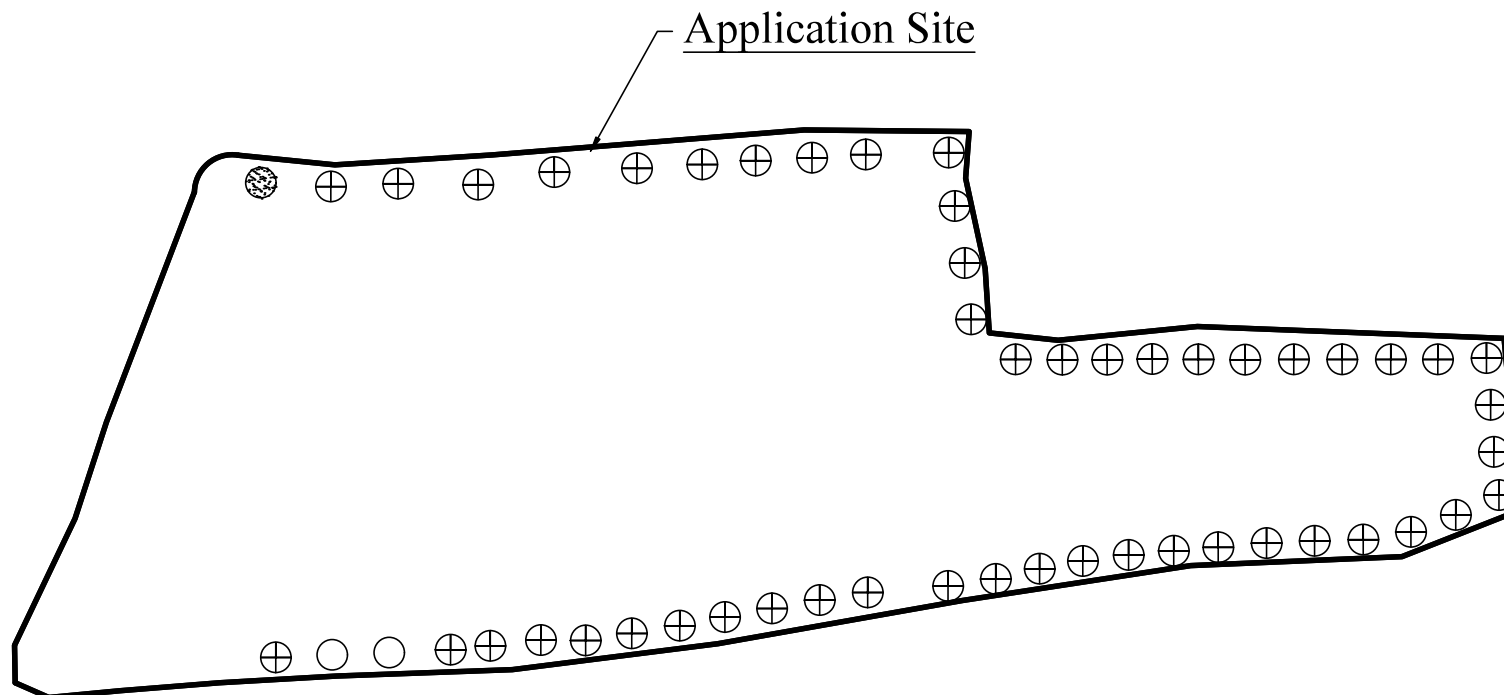
July 2024

Site Plan

Lots 322 S.A (Part), 323 (Part), 324 (Part) and 1421 (Part) in D.D.119,
Tong Yan San Tsuen, Yuen Long, New Territories

Goldrich Planners & Surveyors Ltd.

Plan 3
(P 4072)



<u>Tree Schedule</u>	<u>Species</u>	<u>Size</u>	<u>Quantity</u>
Existing	⊗ Ficus Microcarpa (細葉榕)	2.75m (H)	11
Existing	⊕ Bauhinia Blakeana (洋紫荊)	2.75m (H)	54
Existing	○ Others	2.75m (H)	3

1 : 500

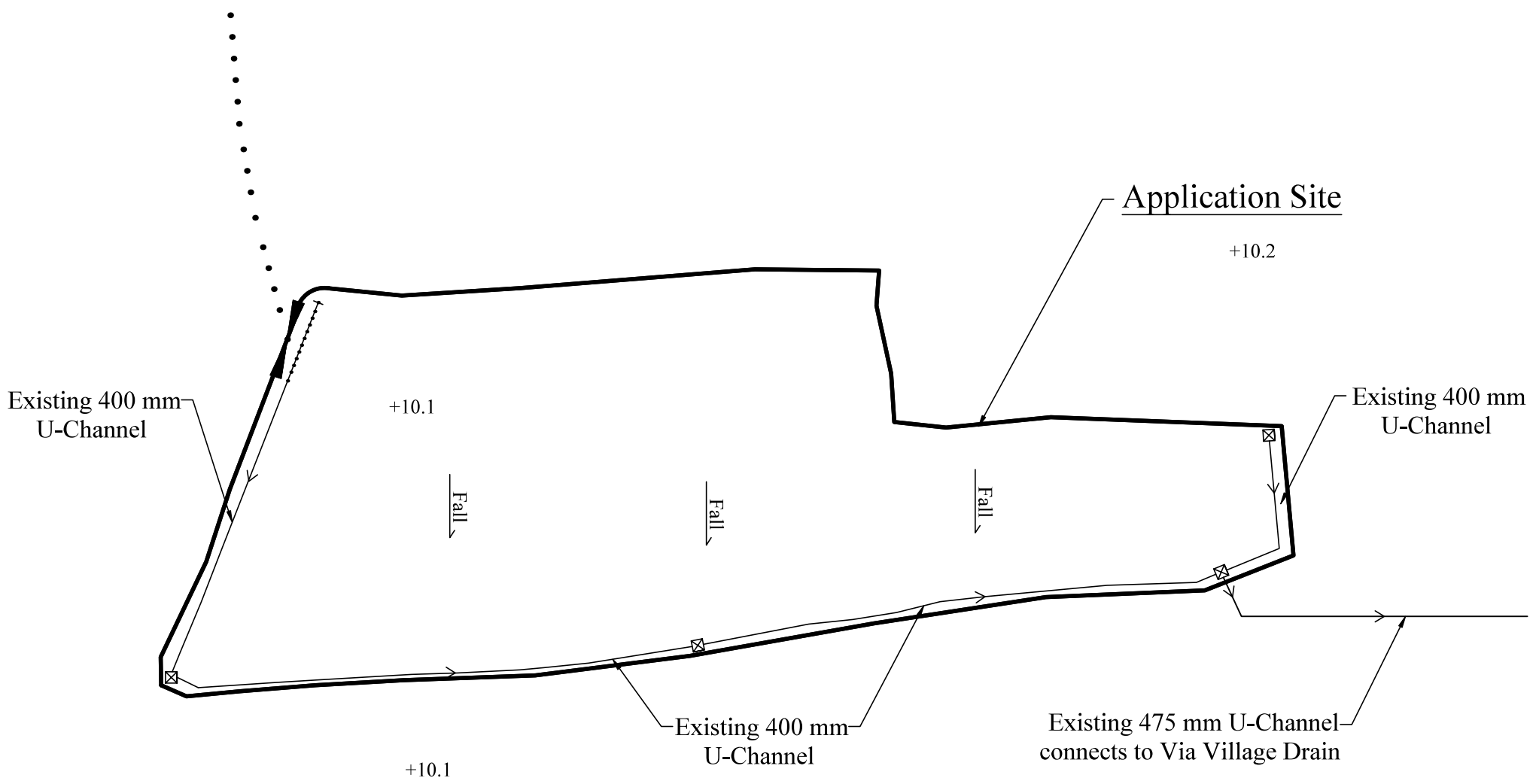
July 2024

Tree Preservation and Landscape Plan

Lots 322 S.A (Part), 323 (Part), 324 (Part) and 1421 (Part) in D.D.119,
Tong Yan San Tsuen, Yuen Long, New Territories

Goldrich Planners & Surveyors Ltd.

**Plan 4
(P 4072)**



NOTE:

1. A space of about 75mm is provided at the bottom part of the hoarding along the site boundary to provide free existing passage for surface water during heavy rainstorm
2. All drainage work will be carried out within the Application Site.

Legend

- ☒ Catchpit
- > Existing U-Channel
- >->- C.I. Cover U-Channel

1 : 500

July 2024

Drainage Proposal

Lots 322 S.A (Part), 323 (Part), 324 (Part) and 1421 (Part) in D.D.119,
Tong Yan San Tsuen, Yuen Long, New Territories

Goldrich Planners & Surveyors Ltd.

**Plan 5
(P 4072)**



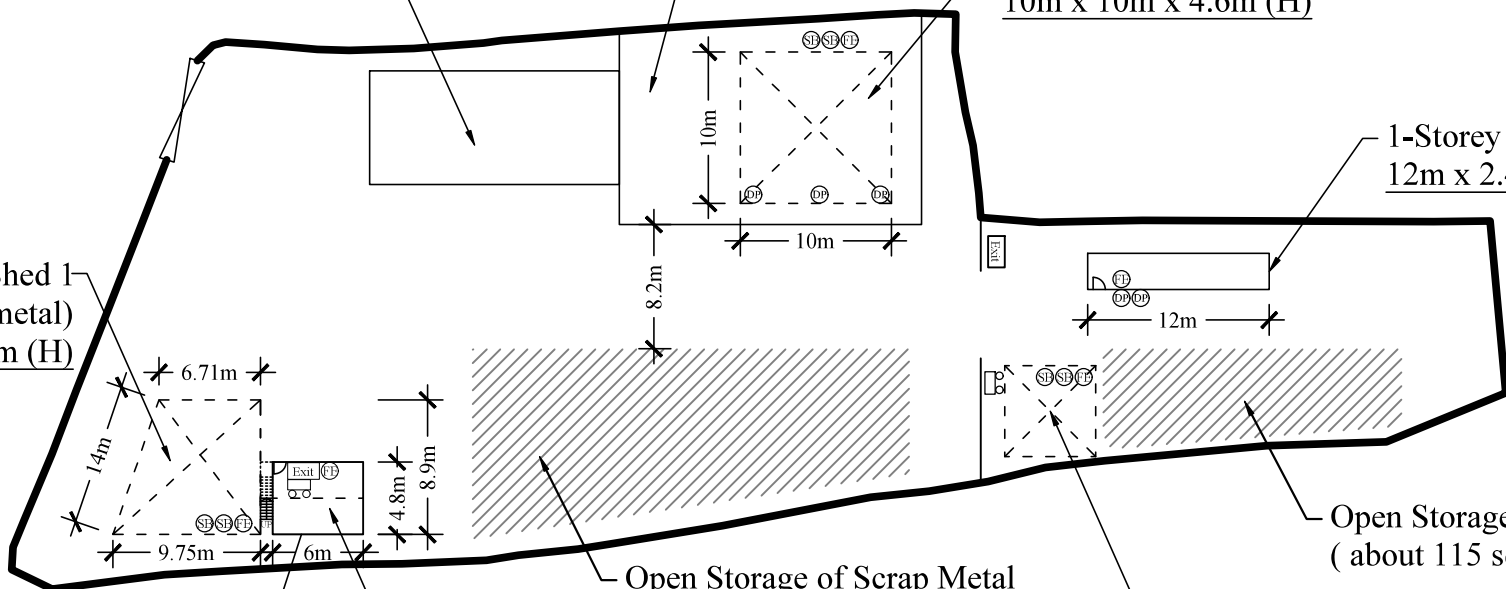
Loading / Unloading Bay for Medium Goods Vehicles

Loading / Unloading Platform

Open Shed 2 for Shelter
10m x 10m x 4.6m (H)

1-Storey Container Storeroom
12m x 2.4m x 2.6m (H)

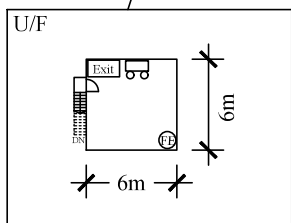
Open Shed 1
(for storage of scrap metal)
73.3 sq. m. x 4.6m (H)



Open Storage of Scrap Metal
(about 115 sq.m.)

Open Storage of Scrap Metal
(about 300 sq.m.)

Open Shed 3 for Storage of Machinery
(non-combustible)
6m x 6m x 4.6m (H)



2-Storey Container Storeroom and Office
G/F: 6m x 4.8m x 2.6m (H)
U/F: 6m x 6m x 2.6m (H)

FS NOTES:

- (i) Sufficient emergency lighting shall be provided in accordance with BS 5266-1:2016, BS EN 1838:2013 and the FSD Circular Letter No. 4/2021
- (ii) Sufficient directional and exit sign shall be provided in accordance with BS 5266: Part 1 and FSD Circular Letter 5/2008.
- (iii) Portable hand-operated approved appliances shall be provided as required by occupancy.
- (iv) 1 5.0kg Dry Powder FE for each 100m² Open Storage.

Legend :

- ⊕ 5.0kg CO2 Gas type Fire Extinguisher x 6 nos.
- ⊗ Sand Bucket x 6 nos.
- Exit Exit sign x 3 nos.
- Emergency Light x 3 nos.
- ⊙ Dry Powder F.E x 5 nos.

1 : 500

Fire Service Installation Proposal

Goldrich Planners & Surveyors Ltd.

July 2024

Lots 322 S.A (Part), 323 (Part), 324 (Part) and 1421 (Part) in D.D.119,
Tong Yan San Tsuen, Yuen Long, New Territories

Plan 6
(P 4072)