

Appendix 2

**Fire Services Installations Proposal submitted in the
Previous Approved Planning Application
No. A/YL-TYST/1102**

B.D. REF.

F.S.D. REF.:

T.P.B. REF.:

PIPE SIZE	COLOUR CODE
ø20mm	ORANGE
ø25mm	GREEN
ø32mm	RED
ø40mm	PURPLE
ø50mm	YELLOW
ø65mm	LIGHT BLUE
ø80mm	DARK GREEN
ø100mm	LIGHT BROWN
ø150mm	BROWN
ø200mm	DARK BLUE

REV.	DATE	DESCRIPTION
H	05/7/2021	AS PER FSD COMMENTS
G	20/9/2021	FSD SUBMISSION
F	24/7/2020	AS PER FSD COMMENTS ON 24/9/2020
E	4/5/2020	AS PER FSD COMMENTS ON 21/4/2020
D	27/5/2019	AS PER FSD COMMENTS
C	15/9/2018	FSD SUBMISSION (TPB/A/11/1/YS1/831)
B	15/9/2016	FSD SUBMISSION (TPB/A/11/1/YS1/784)
A	17/9/2012	1ST SUBMISSION (PLANNING DEPT. REF. TPB/A/11/1/YS1/603)
-	13/6/2012	APPROVED BY FSD INSPECTION (PLANNING DEPT. REF. A/11/1/YS1/544)

CLIENT :
SAM TUNG TRADING CO.

ARCHITECTS & ENGINEERS:
**PLANARCH CONSULTANTS LTD.
PENTECH BUILDING SERVICES**

F.S. CONTRACTOR :

JOB TITLE :
TEMPORARY OPEN STORAGE OF RECYCLING MATERIALS (METAL, PLASTIC AND PAPER) AND USED ELECTRICAL/ELECTRONIC APPLIANCES AND PARTS WITH ANCILLARY PACKAGING ACTIVITIES FOR A PERIOD OF 3 YEARS IN "UNDETERMINED" AND "SHALL BE DEVELOPMENT" ZONES, LOTS 324 (PART), 325, 326 (PART), 327 S.E. (PART), 1420 RP AND 1421 (PART) IN B.D. 119, TONG YAN SAN TSUEN, YUEN LONG.

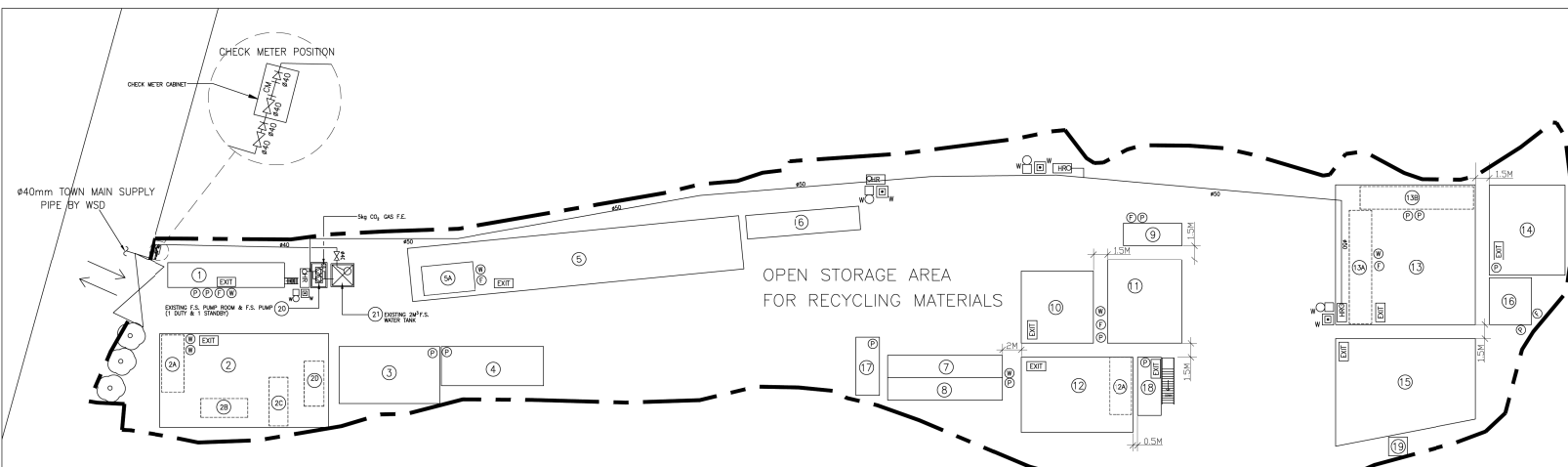
DRAWING TITLE :
**BLOCK PLAN, NOTES, LEGEND,
ABBREVIATION & SCHEMATIC
DIAGRAMS**

SCALE :
AS SHOWN DRAWN DATE :
JULY 2021

DRAWN BY :
CAD CHECKED BY :
R. TAM

DRAWING NO. :
FS-01 REV. NO. :
H

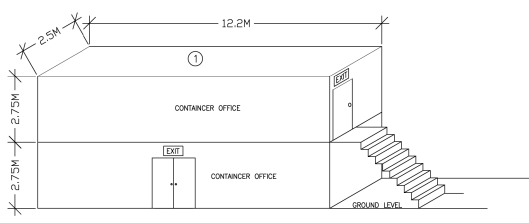
DRAWING FILE :



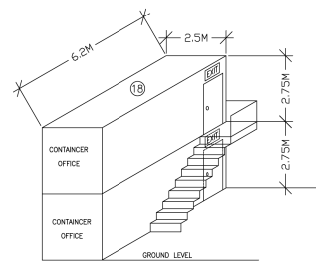
OPEN STORAGE OF RECYCLING MATERIALS DD119, TONG YAN SAN TSUEN, YUEN LONG.
SCALE : 1 : 250

LEGEND

	NEW WATER PIPE		AIR VENT
	GATE VALVE		150mm DIA. ALARM RFI
	CHECK VALVE		WEATHER PROOF 150mm DA ALARM BELL
	CHECK METER POSITION		250mm DIA WEATHERPROOF MASTER ALARM BELL
	STRAINER		MOTOR
	PUMP		EMERGENCY PUSH BUTTON
	FLEXIBLE CONNECTOR		ISOLATOR
	LEVEL SWITCH (ELECTRODE TYPE)		FUSE SWITCH
	BALL VALVE		FUSE
	FIRE HYDRANT OUTLET / DRAIN C/W PLUG		MOTOR CONTROL PANEL
	HOSE REEL WITH 30m HOSE LENGTH		BREAKGLASS UNIT
	PRESSURE SWITCH		WEATHER PROOF BREAKGLASS UNIT
	PRESSURE GAUGE		EXIT SIGN COMPLETE WITH LAMP TUBE, BATTERY PACK AND CONVERSION KIT FOR 1 HOUR DURATION (SINGLE FACE / DOUBLE FACE)
	VISUAL FIRE ALARM (SYNCHRONIZED TYPE)		F.E. FIRE EXTINGUISHER
	MANUAL FIRE ALARM PANEL		F.B. FIRE BLANKET
	BOUNDARY LINE (FENCED OFF AREA WITHOUT DOORS) FOR EACH UNIT		A.A.V. AUTOMATIC AIR VENT
	ENTRANCE FOR UNIT		STAR-DELTA MOTOR STARTER
	(6m x 2.6m) METAL CONTAINER USED FOR STORAGE		DIRECT-ON-LINE MOTOR STARTER
	(12m x 2.6m) METAL CONTAINER USED FOR STORAGE		A.C. POWER SUPPLY
	5kg DRY POWDER FIRE EXTINGUISHER		OFFICE PLATE
	9L AFFF FOAM FIRE EXTINGUISHER		
	5kg CO ₂ GAS FIRE EXTINGUISHER		
	9L WATER CO ₂ FIRE EXTINGUISHER		



DETAIL OF THE STOREY COVERED STRUCTURES NO 1



DETAIL OF THE STOREY COVERED STRUCTURES NO 18

STRUCTURES NO.	LENGTH (M)	WIDTH (M)	HEIGHT (M)	NO. OF STOREYS	AREA (M ²)	USAGE	SHELLING STRUCTURES OPEN ON SIDES
1	12.2	2.5	5.5	2	62	CONTAINER FOR OFFICE	-
2	18	1.0	3.0	1	180	SHELTER FOR STORAGE	2
2A	6.1	2.4	2.6	1	15	CONTAINER FOR STORAGE	-
2B	5	2	2.6	1	10	CONTAINER FOR STORAGE	-
2C	5.2	2	2.6	1	10.5	CONTAINER FOR STORAGE	-
2D	4.8	2.1	2.6	1	10	CONTAINER FOR STORAGE	-
3	10.7	6.1	5.0	1	65	SHELTER FOR STORAGE	4
4	11	4.2	4.0	1	46	SHELTER FOR STORAGE	4
5	35.6	5.8	5.0	1	206	SHELTER FOR STORAGE & STAFF RESTING ROOM	2
6	5.5	3.1	2.6	1	17	CONTAINER FOR STORAGE & STAFF RESTING ROOM	-
6A	12.2	2.5	2.5	1	31	CONTAINER FOR STORAGE	2
7	12.2	2.4	2.6	1	29	CONTAINER FOR STORAGE	2
8	12.2	2.4	2.6	1	29	CONTAINER FOR OFFICE	2
9	6.2	2.4	2.6	1	15	SHELTER FOR STORAGE	2
10	7.7	7.7	4.0	1	59	SHELTER FOR STORAGE & ANCILLARY PACKAGING	4
11	9.0	8.0	4.0	1	72	SHELTER FOR STORAGE & ANCILLARY PACKAGING	4
12	12	8.0	4.0	1	96	SHELTER FOR STORAGE & ANCILLARY PACKAGING	4
13	6.1	2.4	2.6	1	15	CONTAINER FOR STORAGE	-
14	15	15	5.5	1	225	SHELTER FOR STORAGE & ANCILLARY PACKAGING	2
15	12.2	2.4	2.6	1	29	CONTAINER FOR STORAGE	-
16	12.2	2.4	2.6	1	29	CONTAINER FOR STORAGE	-
17	9.7	8.1	5.5	1	79	SHELTER FOR WORKSHOP	2
18	15	8.6 - 11.5	7.5	1	151	SHELTER FOR WORKSHOP	4
19	4.5	5	3.5	1	23	SHELTER FOR WORKSHOP	2
20	6.2	2.5	2.5	1	16	CONTAINER FOR OFFICE	2
21	6.2	2.5	5.5	2	32	CONTAINER FOR OFFICE	-
22	2.0	2.0	2.6	1	4	TOILET	-
23	2.5	2.0	3.0	1	5	F.S. PUMP ROOM	-
24	2.5	2.0	1.5	1	5	F.S. WATER TANK	-

F.S. NOTES

- PORTABLE FIRE FIGHTING APPLIANCES SHALL BE PROVIDED AT POSITIONS AS INDICATED ON LAYOUT PLANS IN ACCORDANCE TO CODES OF PRACTICE FOR MINIMUM FIRE SERVICES INSTALLATIONS AND EQUIPMENT.
- NO STORAGE OF DANGEROUS GOODS WITHOUT THE PERMISSION BY THE DIRECTOR OF FIRE SERVICES. ANY INTENDED STORAGE OR USE DEFINED IN CHAPTER 295 OF THE LAWS OF HONG KONG SHOULD BE NOTIFIED TO THE DIRECTOR OF FIRE SERVICES.
- UNLESS TOTAL FLOOR AREA FOR A STRUCTURE EXCEED 230 SQUARE METERS, NO SPRINKLER SYSTEM IS REQUIRED.
- FIRE ALARM SYSTEM SHALL BE PROVIDED TO THE ENTIRE BUILDING IN ACCORDANCE WITH BS 5839 - PART 1 2002 + A2 : 2008 AND FIRE SERVICES DEPARTMENT (FSD) CIRCULAR LETTER NO. 1/2009 ONE ACTUATING POINT AND ONE AUDIO WARNING DEVICE TO BE LOCATED AT EACH HOSE REEL POINT. THIS ACTUATION POINT SHOULD INCLUDE FACILITIES FOR FIRE PUMP START AND AUDIO / VISUAL WARNING DEVICE INITIATION.
- MODIFIED HOSE REEL SYSTEM WITH 2M³ F.S. WATER TANK SHALL BE PROVIDED. THERE SHALL BE SUFFICIENT HOSE REELS TO ENSURE THAT EVERY PART OF EACH BUILDING CAN BE REACHED BY A LENGTH OF NOT MORE THAN 30M OF HOSE REEL TUBING FOR THE ENTIRE BUILDING.
- SUFFICIENT EMERGENCY LIGHTING SHALL BE PROVIDED THROUGHOUT THE ENTIRE BUILDING IN ACCORDANCE WITH BS 5266 : PART 1 AND BS EN 1838.
- SUFFICIENT DIRECTIONAL AND EXIT SIGN SHALL BE PROVIDED IN ACCORDANCE WITH BS 5266 : PART 1 AND FSD CIRCULAR LETTER NO. 5/2008.