

**Proposed Temporary Shop and Services (Retail Shop for Metal and Home Appliance) for a Period of 3 Years
at
Lots 1020 (Part), 1021 (Part) & 1024 (Part) in D.D. 121, Tong Yan San Tsuen, Yuen Long, N.T.**

Annex 1 Estimated Traffic Generation

- 1.1 The application site is accessible via a vehicular track leading from Tong Yan San Tsuen Road or Sha Tseng Road. In view of that the proposed development is target for the nearby residents and villagers, 1 parking space of 5m x 2.5m sufficient for the parking of private car is proposed for the proposed development.
- 1.2 The estimated average traffic generation and traffic generation rate at peak hours are as follow:

Type of Vehicle	Average Traffic Generation Rate (pcu/hr)	Average Traffic Attraction Rate (pcu/hr)	Traffic Generation Rate at <u>Peak Hours</u> (pcu/hr)	Traffic Attraction Rate at <u>Peak Hours</u> (pcu/hr)
Private car	0.18	0.18	1	1
Light goods vehicle	0.27	0.27	1.5	1.5
Total	0.45	0.45	2.5	2.5

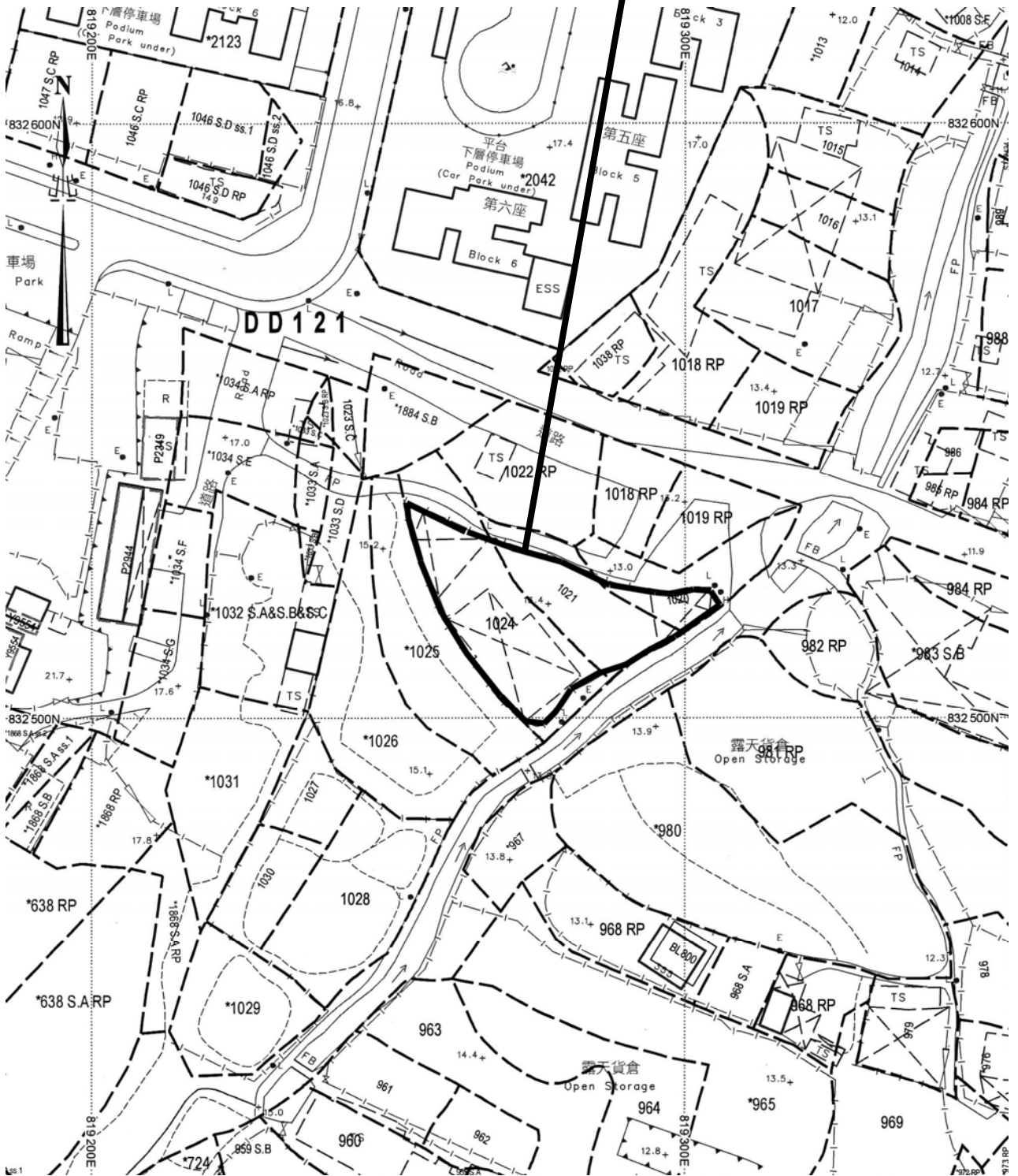
Note 1: The opening hour of the proposed development is restricted to 9:00 a.m. to 8:00 p.m. at all days including Sundays and public holidays.

Note 2: The pcu of private car and light goods vehicle are taken as 1 & 1.5 respectively.

Note 3: Morning peak is defined as 7:00a.m. to 9:00a.m. whereas afternoon peak is defined as 5:00p.m. to 7:00p.m.

- 1.3 In association with the intended purpose, adequate space for manoeuvring of vehicle would be provided within the application site and queueing up of traffic would not be the result especially that the traffic generated is insignificant. The negligible increase in traffic would not aggravate the traffic condition of Tong Yan San Tsuen Road, Sha Tseng Road and nearby road networks.

Application Site



Project 項目名稱:

Proposed Temporary Shop and Services (Retail Shop for Metal and Home Appliance) for a Period of 3 Years at Lots 1020 (Part), 1021 (Part) & 1024 (Part) in D.D. 121, Tong Yan San Tsuen, Yuen Long, N.T.

Drawing Title 圖目:

Application Site

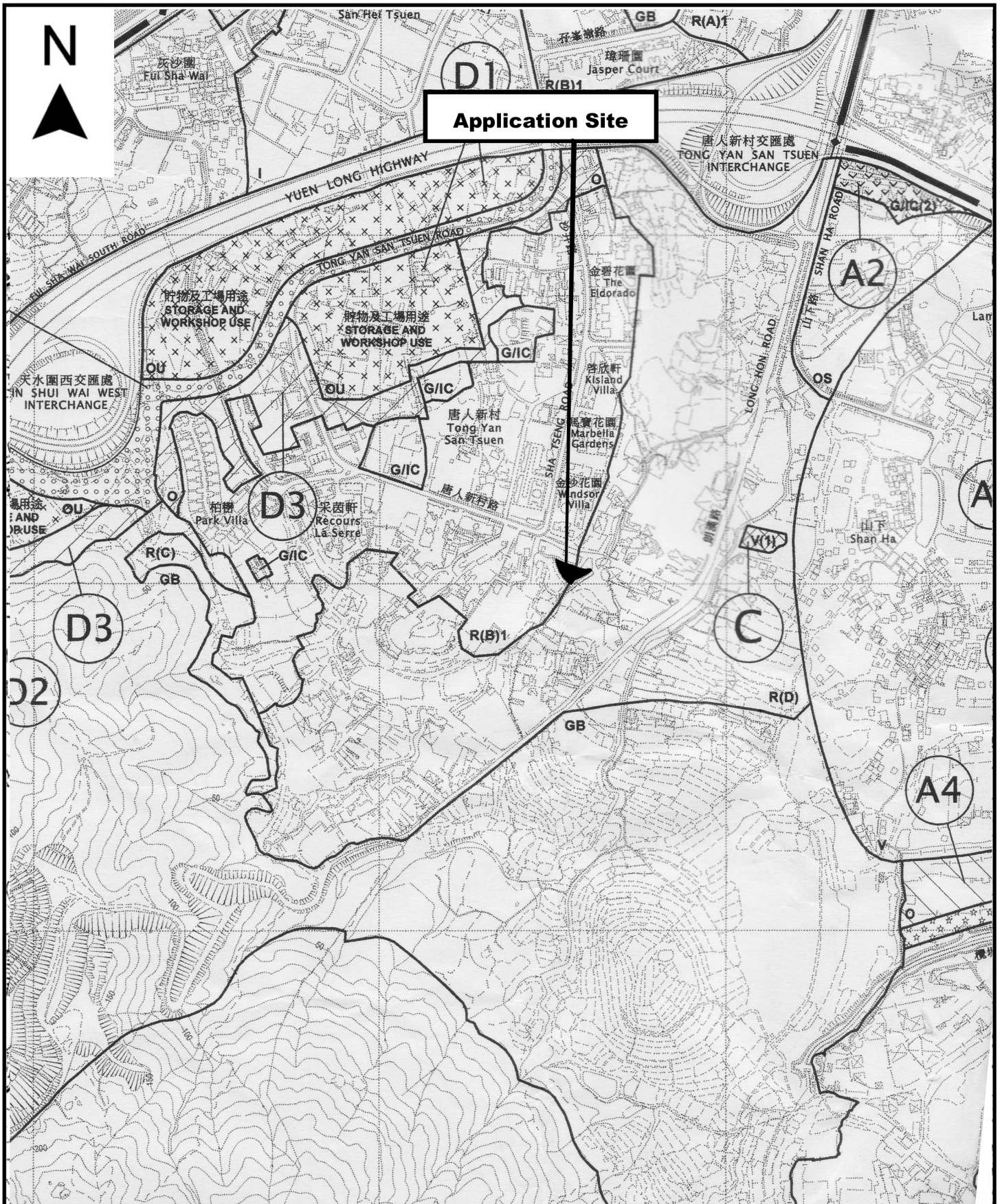
Remarks 備註:

Drawing No. 圖號:

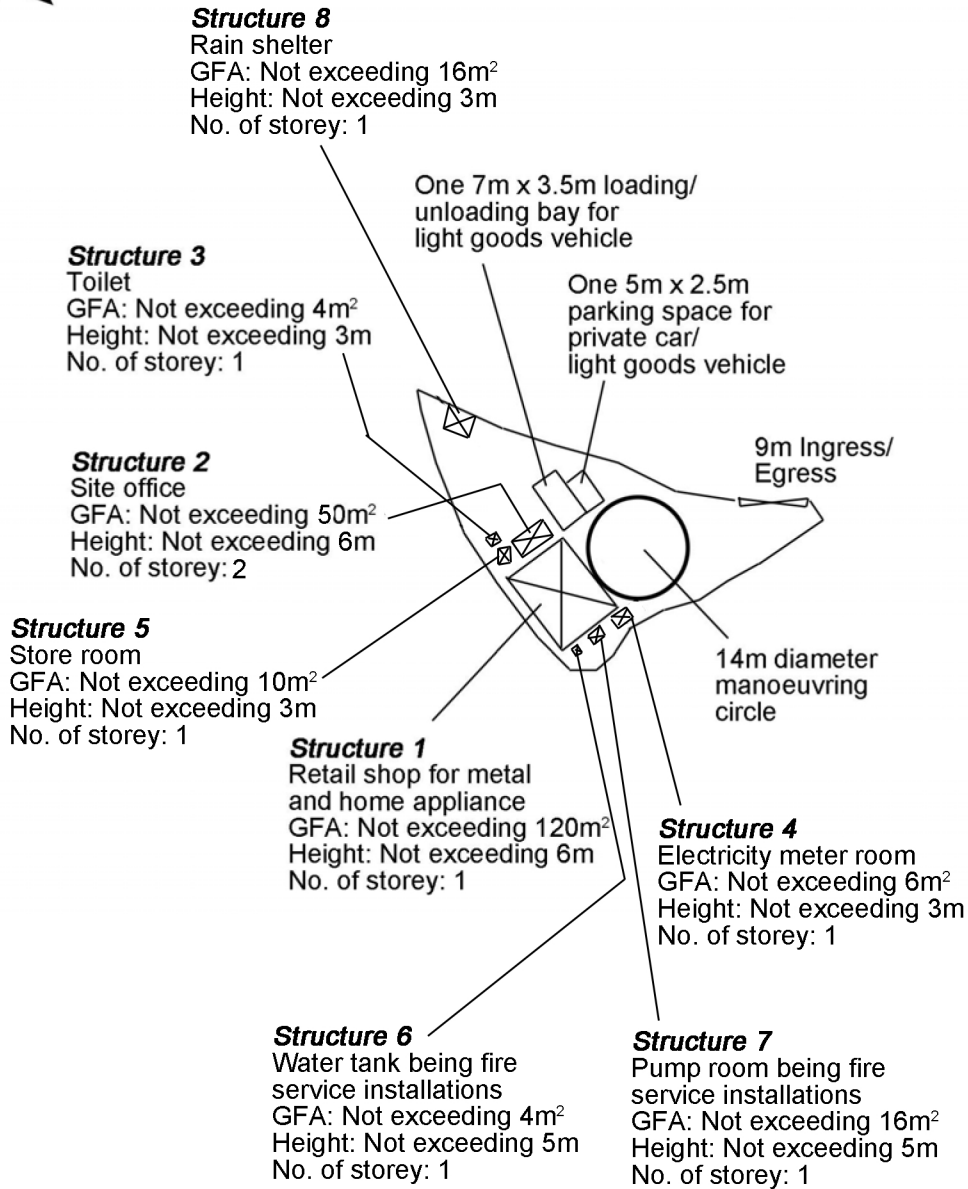
Figure 1

Scale 比例:

1:1000

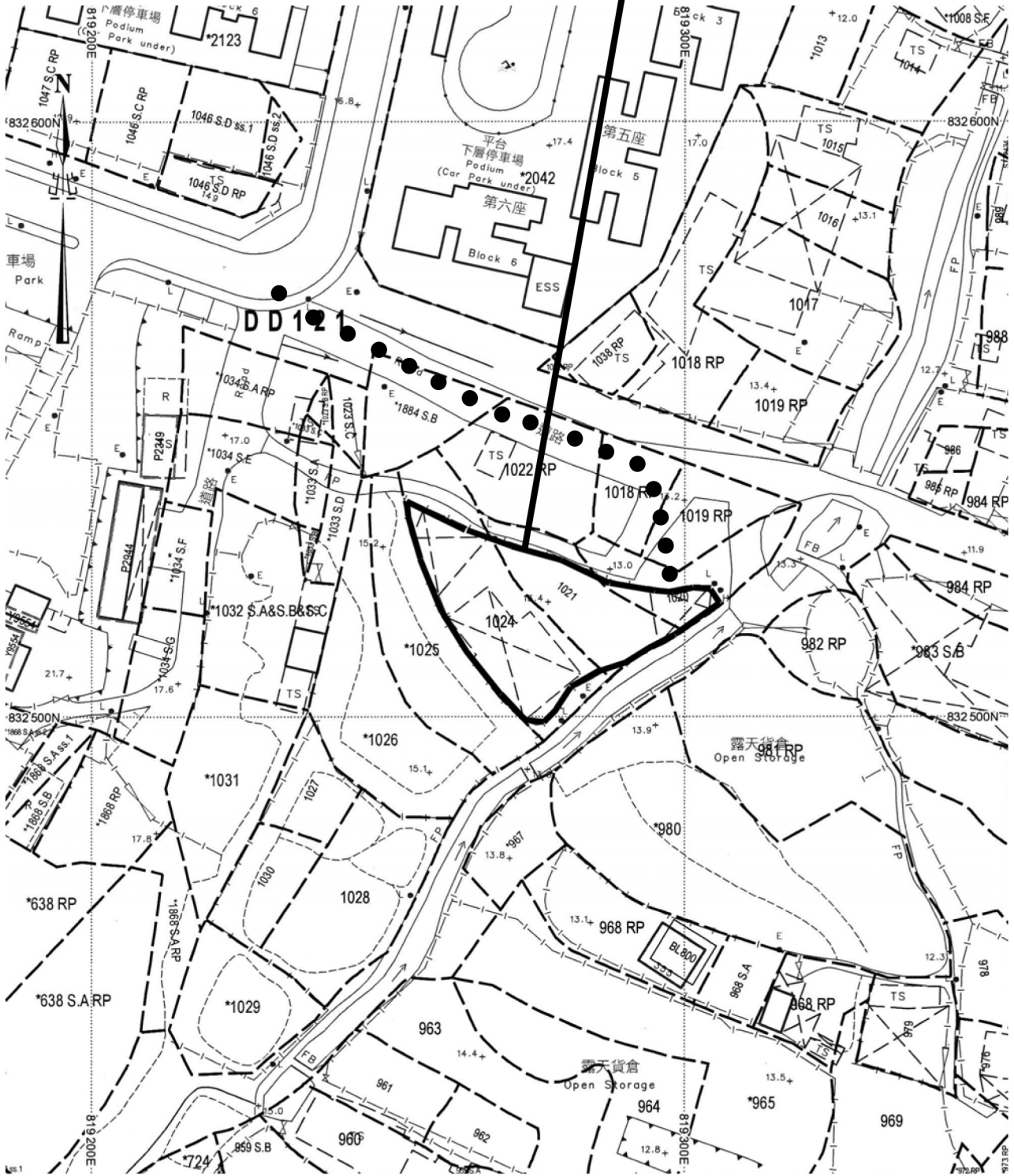


<p>Project 項目名稱: Proposed Temporary Shop and Services (Retail Shop for Metal and Home Appliance) for a Period of 3 Years at Lots 1020 (Part), 1021 (Part) & 1024 (Part) in D.D. 121, Tong Yan San Tsuen, Yuen Long, N.T.</p>	<p>Drawing Title 圖目: Location Plan</p>	<p>Remarks 備註:</p>
	<p>Drawing No. 圖號: Figure 2</p>	<p>Scale 比例: 1:7500</p>



<p>Project 項目名稱: Proposed Temporary Shop and Services (Retail Shop for Metal and Home Appliance) for a Period of 3 Years at Lots 1020 (Part), 1021 (Part) & 1024 (Part) in D.D. 121, Tong Yan San Tsuen, Yuen Long, N.T.</p>	<p>Drawing Title 圖目: Proposed Layout Plan</p> <p>Drawing No. 圖號: Figure 3</p>	<p>Remarks 備註:</p> <p>Scale 比例 1:1000</p>
--	---	---

Application Site



Project 項目名稱:

Proposed Temporary Shop and Services (Retail Shop for Metal and Home Appliance) for a Period of 3 Years at Lots 1020 (Part), 1021 (Part) & 1024 (Part) in D.D. 121, Tong Yan San Tsuen, Yuen Long, N.T.

Drawing Title 圖目:

Vehicular Access Plan

Remarks 備註:

●●● Vehicular access leading from Sha Tseng Road/ Tong Yan San Tsuen Road

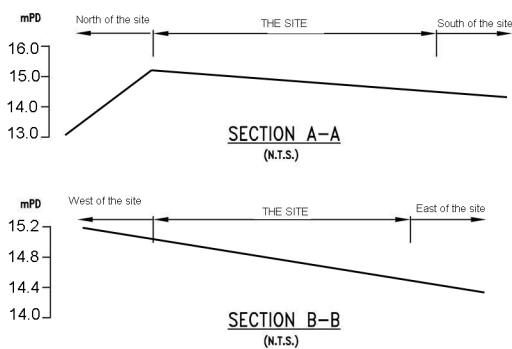
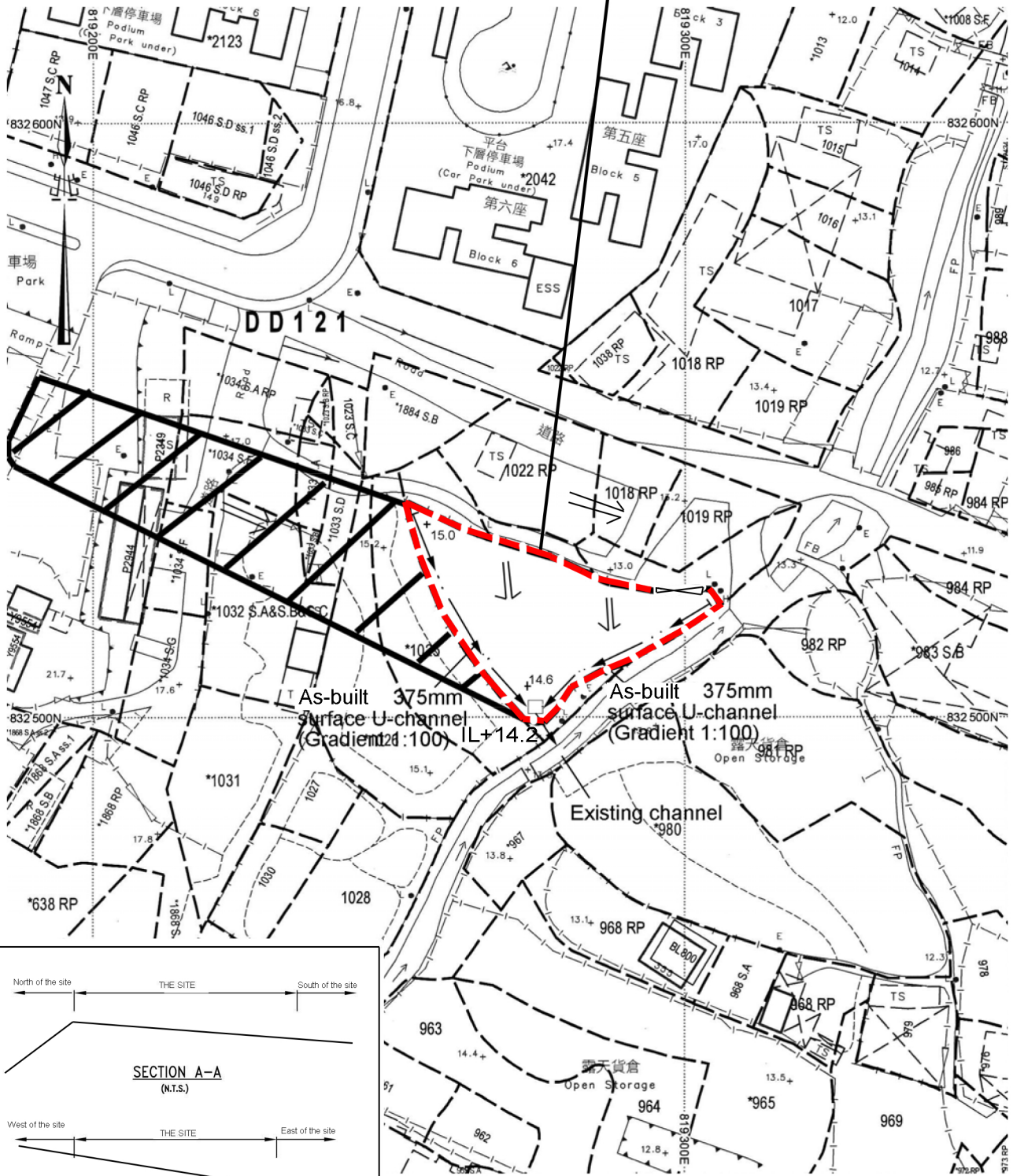
Drawing No. 圖號:

Figure 4

Scale 比例:

1:1000

Application Site



Project 項目名稱:

Proposed Temporary Shop and Services (Retail Shop for Metal and Home Appliance) for a Period of 3 Years at Lots 1020 (Part), 1021 (Part) & 1024 (Part) in D.D. 121, Tong Yan San Tsuen, Yuen Long, N.T.

Drawing Title 圖目:

As-built Drainage Plan

Drawing No. 圖號:

Figure 5

Remarks 備註:

- Site fencing
- Catchpit (with sand trap)
- ← Flow of surface runoff
- +15.0 Level (in mPD)
- External catchment

Scale 比例:

1:1000