

**Proposed Temporary Shop and Services (Shop for Selling Metal Ware)  
for a Period of 3 Years  
at  
Lots 2535 (Part), 2536 (Part) & 2537 (Part) in D.D. 124, Hung Shui Kiu,  
Yuen Long, N.T.**

---

**Annex 1 Estimated Traffic Generation**

- 1.1 The application site is served by a vehicular track leading from Hung Shun Road. Having mentioned that the site is intended for shop and services (shop for selling metal ware) in only 570m<sup>2</sup>, traffic generated by the proposed development is extremely insignificant.
- 1.2 The application site is abutting a public vehicle park. The proposed loading/unloading bay will be available for loading/unloading use. In view of that the loading/unloading of metal ware will be infrequent and short-lived, the proposed loading/unloading bay to serve the proposed use would be sufficient.
- 1.3 The estimated average traffic generation and traffic generation rate at peak hours are as follow:

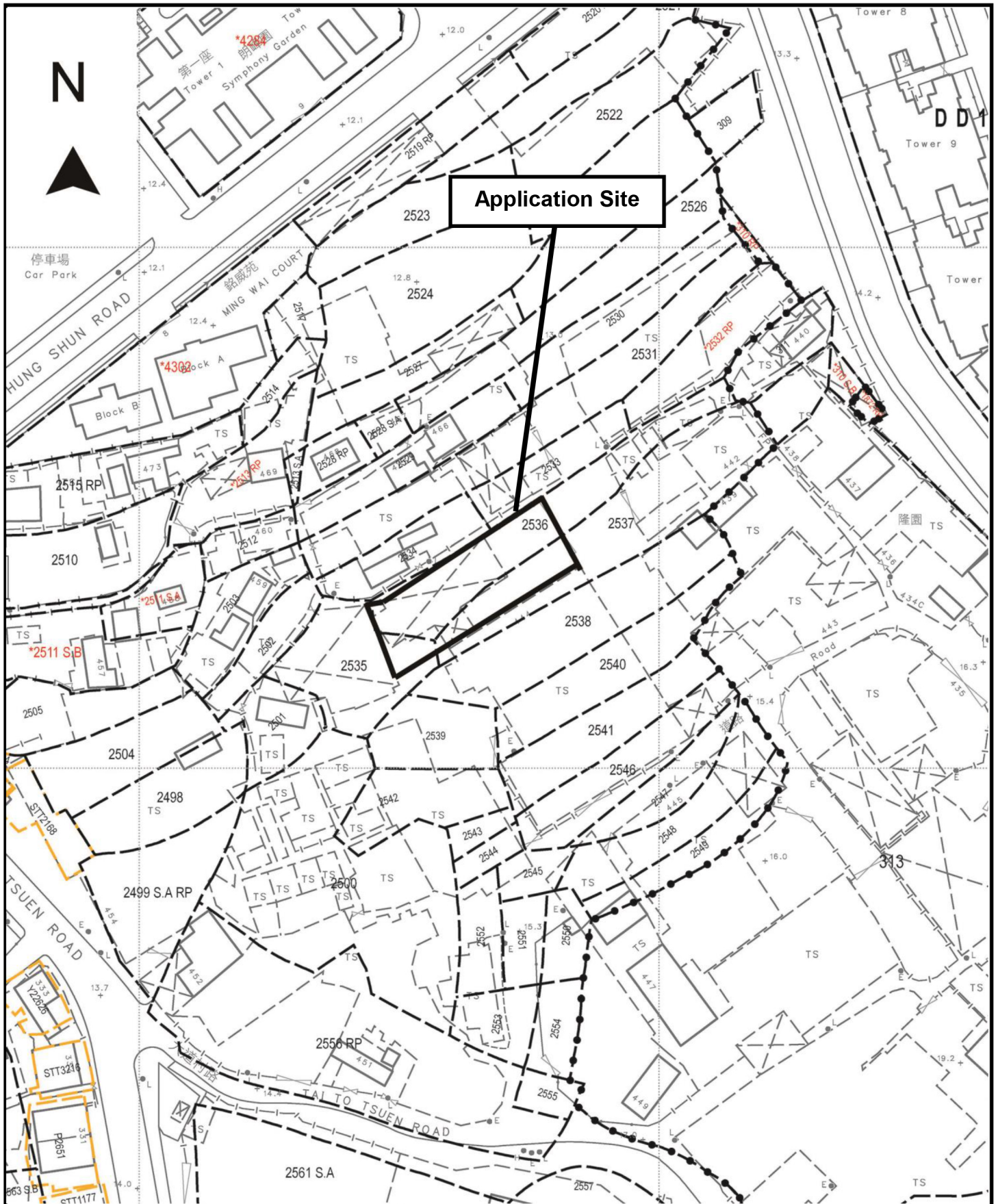
| Type of Vehicle     | <u>Average Traffic Generation Rate</u><br>(pcu/hr) | <u>Average Traffic Attraction Rate</u><br>(pcu/hr) | <u>Traffic Generation Rate at Peak Hours</u><br>(pcu/hr) | <u>Traffic Attraction Rate at Peak Hours</u><br>(pcu/hr) |
|---------------------|--|--|--|--|
| Light goods vehicle | 0.15   | 0.15   | 0  | 0  |

Note 1: The opening hour of the proposed development is restricted to 9:00 a.m. to 7:00 p.m. from Mondays to Sundays including public holidays.

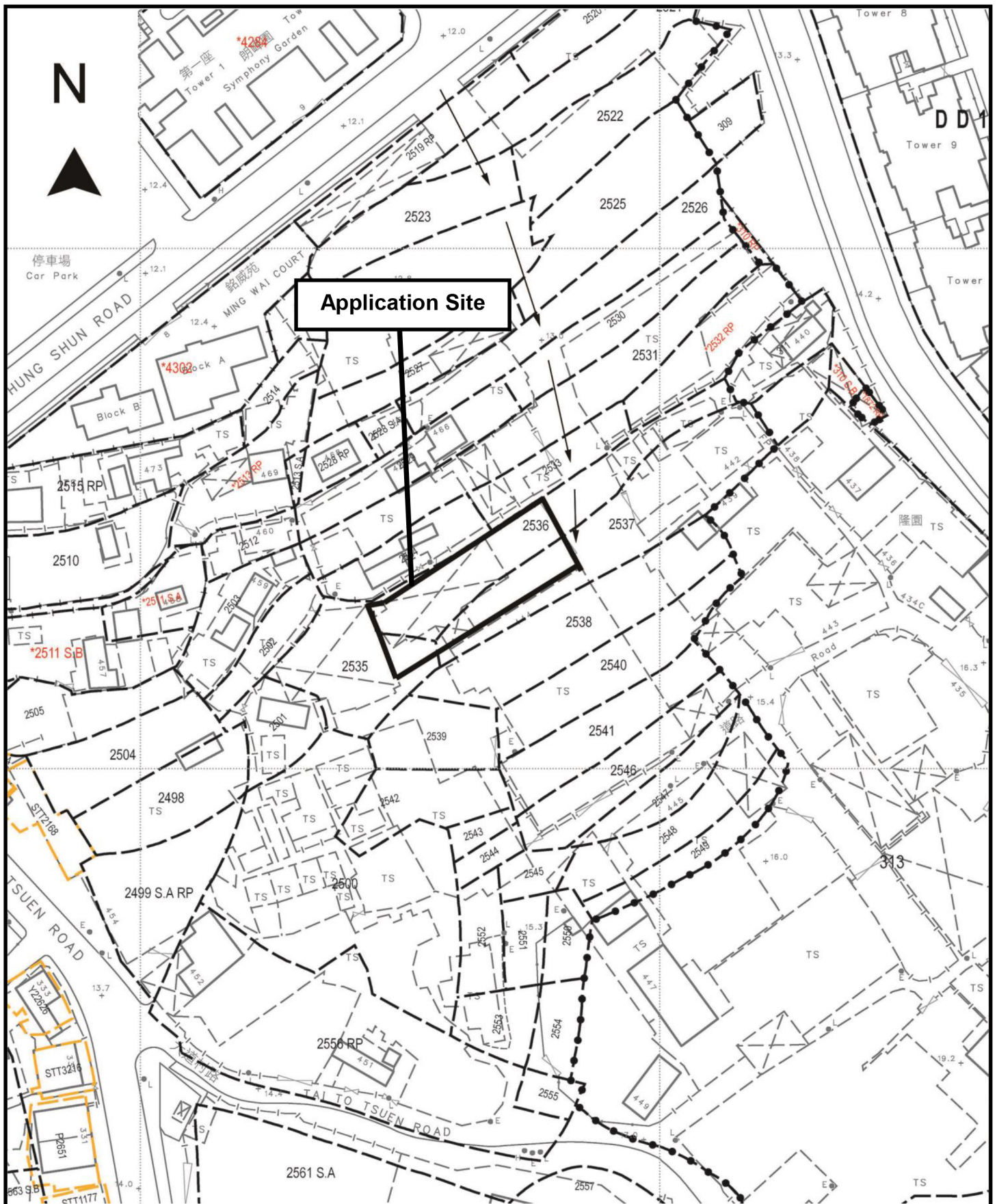
Note 2: The pcu of light goods vehicle is taken as 1.5.

Note 3: Morning peak is defined as 7:00a.m. to 9:00a.m. whereas afternoon peak is defined as 5:00p.m. to 7:00p.m.

- 1.4 As shown in the above estimation, it is estimated that the proposed development would not generate significant amount of traffic. It would not affect the traffic condition of Hung Shun Road.

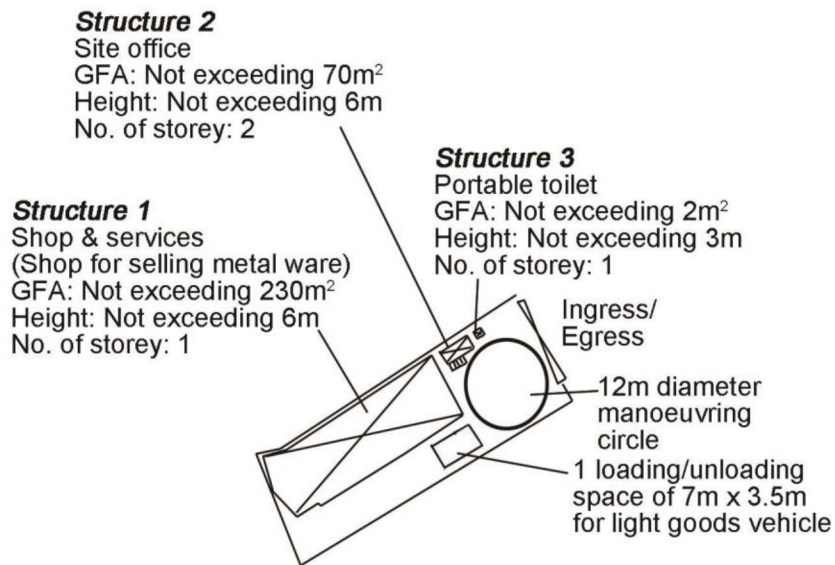


|  |   |                    |
|--|---|--------------------|
| <p>Project 項目名稱:<br/>         Proposed Temporary Shop and Services (Shop for Selling Metal Ware) for a Period of 3 Years at Lots 2535 (Part), 2536 (Part), &amp; 2537 (Part) in D.D. 124, Hung Shui Kiu, Yuen Long, N.T.</p> | <p>Drawing Title 圖目:<br/>         Site Plan</p> | <p>Remarks 備註:</p> |
| <p>Drawing No. 圖號:<br/>         Figure 1</p>   | <p>Scale 比例:<br/>         1:1000</p>            |                    |



|  |  |  |
|--|--|--|
| <p>Project 項目名稱:<br/>         Proposed Temporary Shop and Services (Shop for Selling Metal Ware) for a Period of 3 Years at Lots 2535 (Part), 2536 (Part), &amp; 2537 (Part) in D.D. 124, Hung Shui Kiu, Yuen Long, N.T.</p> | <p>Drawing Title 圖目:<br/> <b>Vehicular Access Plan</b></p> | <p>Remarks 備註:<br/>         → Vehicular access leading from Hung Shun Road</p> |
| <p>Drawing No. 圖號:<br/> <b>Figure 2</b></p>  | <p>Scale 比例:<br/> <b>1:1000</b></p>                        |  |

N



Project 項目名稱:

Proposed Temporary Shop and Services (Shop for Selling Metal Ware) for a Period of 3 Years at Lots 2535 (Part), 2536 (Part), & 2537 (Part) in D.D. 124, Hung Shui Kiu, Yuen Long, N.T.

Drawing Title 圖目:

Proposed Layout Plan

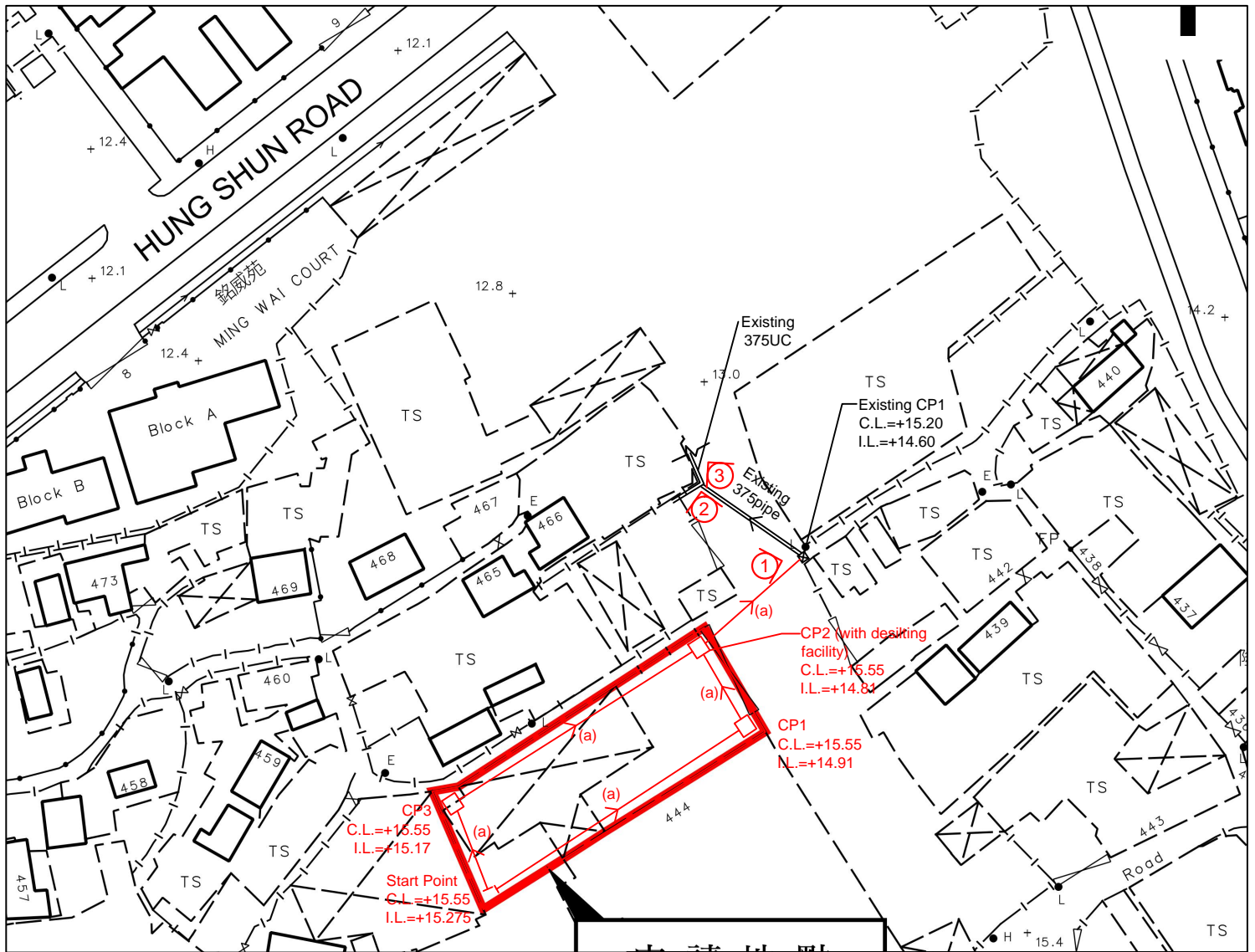
Remarks 備註:

Drawing No. 圖號:

Figure 3

Scale 比例:

1:1000



**Note:**

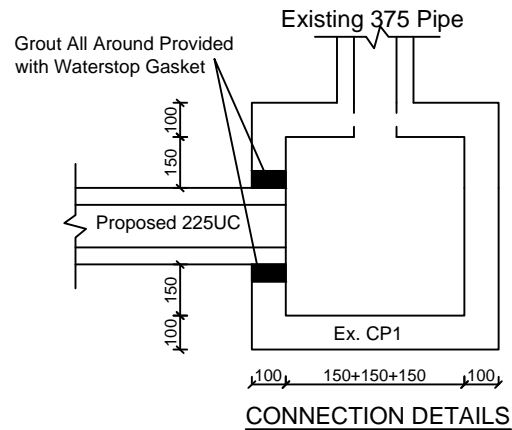
- Catchpits (CP2) with desilting facility shall follow CEDD standard drawing No. C24061.
- Catchpit and UC follows Typical Details of Geotechnical Manual for Slope Fig.8.10 and Fig.8.11 respectively.
- No solid wall to be erected..
- Surrounding area has its own stormwater collection system.

Total Catchment Area = 620 sq.m  
 $Q=0.278CiA$   
 $=0.278 \times 0.95 \times 250 \times \frac{620}{1000000}$   
 $=0.041 \text{ m}^3/\text{s}$   
 $=2456 \text{ lit}/\text{min}$

Provide 225UC (1:100) is OK

**LEGEND**

- CP Proposed CatchPit
- (a) Proposed 225UC (1:100) with Cast Iron Cover
- Ex. CP Existing CatchPit
- Existing 375pipe/375UC
- 1 Photo Viewport



正宏工程顧問公司

CHING WAN ENGINEERING CONSULTANTS CO.

**Project:**  
**Proposed Temporary Shop and Services for a Period of 3 Years at Lots 2535 (Part), 2536 (Part) and 2357 (Part) in D.D. 124, Hung Shui Kiu, Yuen Long, New Territories**

(Application No.: )

Title:

Drainage Proposal - LAYOUT

D01

Drawn by:

DM

Date:

10-1-2025

Check by:

DM

Scale:

----

**GEO Technical Guidance Note No. 43 (TGN 43)**

**Guidelines on Hydraulic Design of U-shaped and Half-round Channels on Slopes**

Issue No.: 1    Revision: -    Date: 05.06.2014    Page: 3 of 3

Figure 1 - Chart for the rapid design of U-shaped and half-round channels up to 600 mm

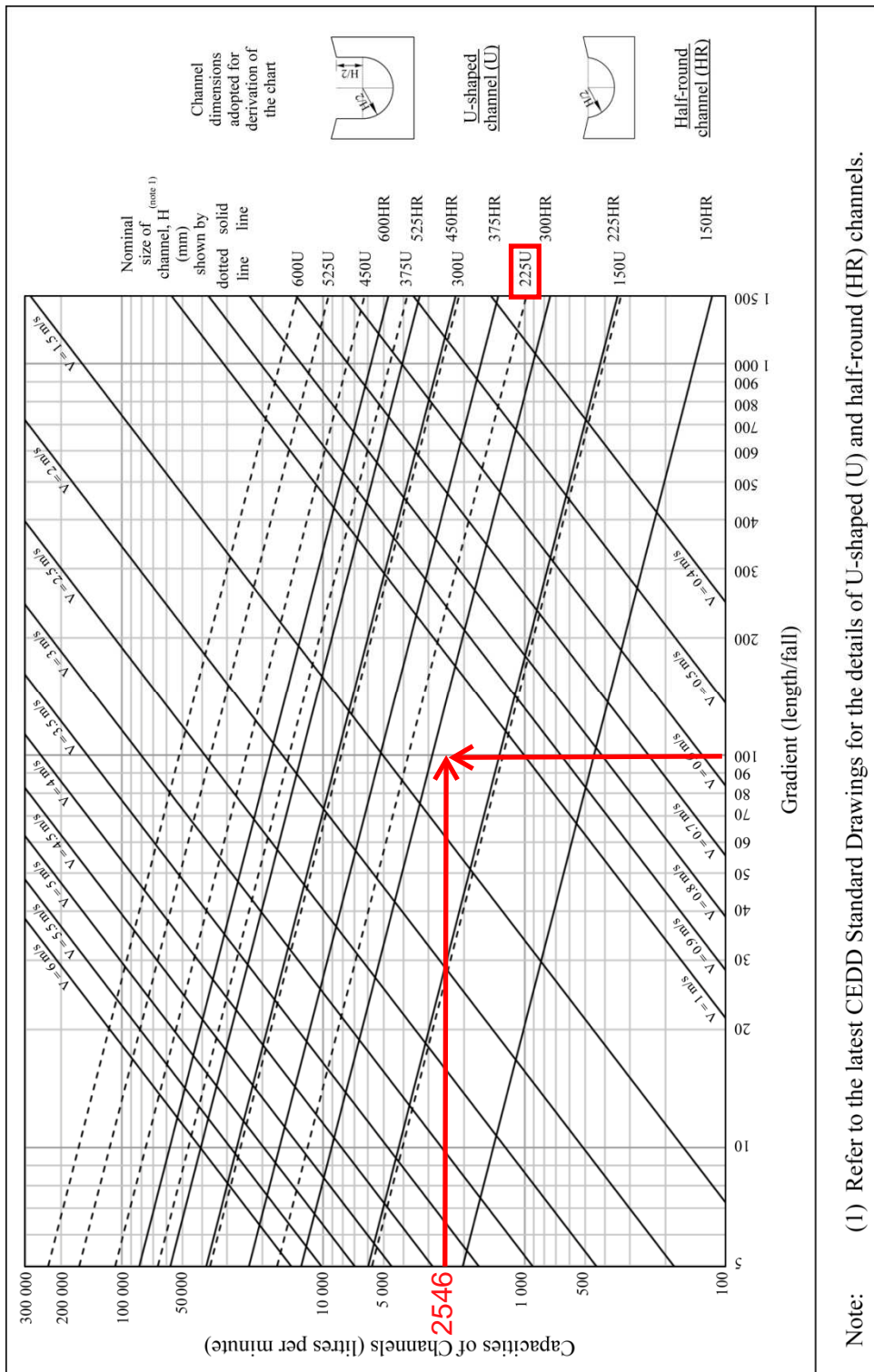


Photo 1



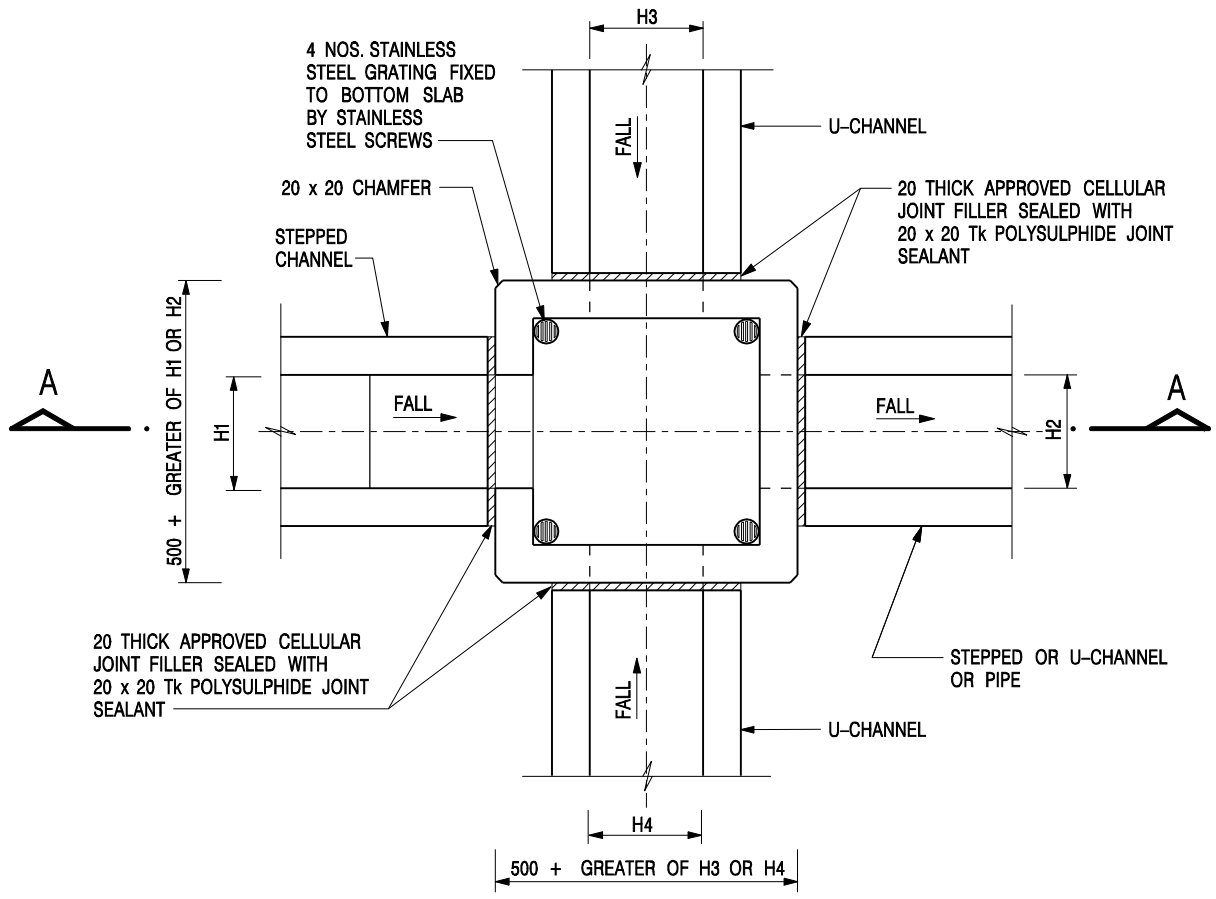
Photo 2



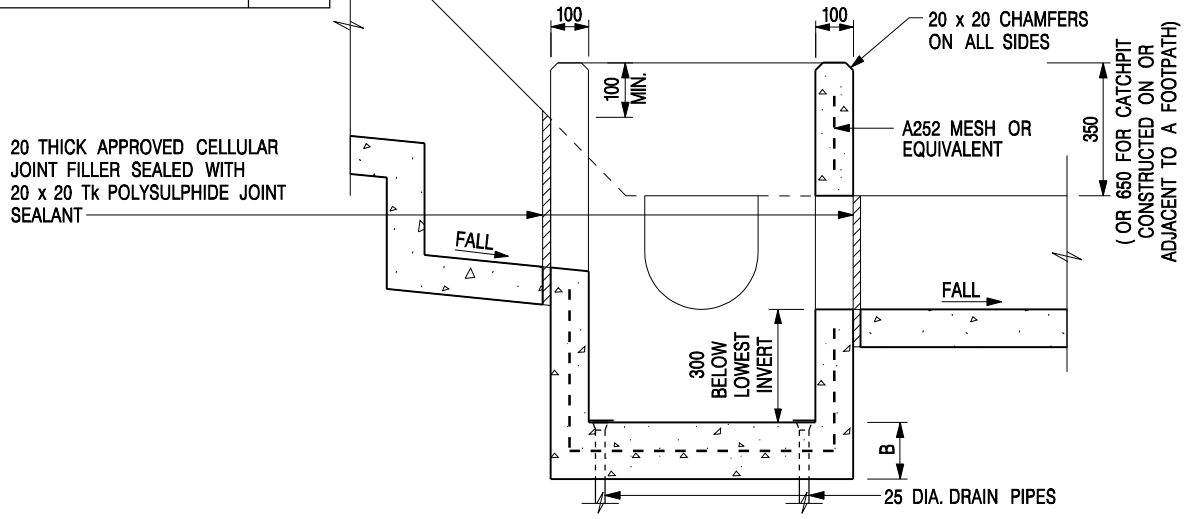
Photo 3







| NOMINAL SIZE<br>(LARGEST OF H1, H2, H3 & H4) | B   |
|--|-----|
| 300 - 600                                    | 150 |
| 675 - 900                                    | 175 |



**NOTES:**

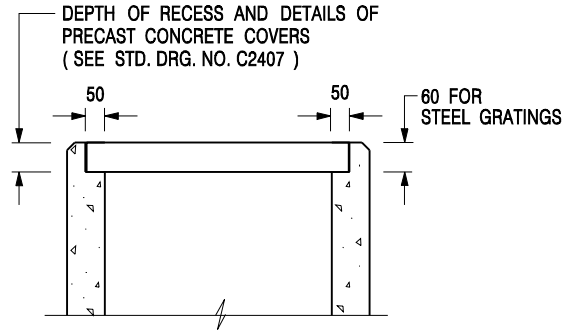
1. ALL DIMENSIONS ARE IN MILLIMETRES.
2. REFER TO SHEET 2 FOR OTHER NOTES.

**CATCHPIT WITH TRAP**  
**(SHEET 1 OF 2)**

|             |                         |                  |             |
|-------------|-------------------------|------------------|-------------|
| -           | FORMER DRG. NO. C2406J. | Original Signed  | 03.2015     |
| <b>REF.</b> | <b>REVISION</b>         | <b>SIGNATURE</b> | <b>DATE</b> |



|                      |                    |
|----------------------|--------------------|
| <b>SCALE</b> 1 : 20  | <b>DRAWING NO.</b> |
| <b>DATE</b> JAN 1991 | <b>C2406 /1</b>    |




**ALTERNATIVE TOP SECTION  
FOR PRECAST CONCRETE COVERS / GRATINGS**

**NOTES:**

1. ALL DIMENSIONS ARE IN MILLIMETRES.
2. ALL CONCRETE SHALL BE GRADE 20 /20.
3. CONCRETE SURFACE FINISH SHALL BE CLASS U2 OR F2 AS APPROPRIATE.
4. FOR DETAILS OF JOINT, REFER TO STD. DRG. NO. C2413.
5. CONCRETE TO BE COLOURED AS SPECIFIED.
6. UNLESS REQUESTED BY THE MAINTENANCE PARTY AND AS DIRECTED BY THE ENGINEER, CATCHPIT WITH TRAP IS NORMALLY NOT PREFERRED DUE TO PONDING PROBLEM.
7. UPON THE REQUEST FROM MAINTENANCE PARTY, DRAIN PIPES AT CATCHPIT BASE CAN BE USED BUT THIS IS FOR CATCHPITS LOCATED AT SLOPE TOE ONLY AND AS DIRECTED BY THE ENGINEER.
8. FOR CATCHPITS CONSTRUCTED ON OR ADJACENT TO A FOOTPATH, STEEL GRATINGS ( SEE DETAIL 'A' ON STD. DRG. NO. C2405 ) OR CONCRETE COVERS ( SEE STD. DRG. NO. C2407 ) SHALL BE PROVIDED AS DIRECTED BY THE ENGINEER.
9. IF INSTRUCTED BY THE ENGINEER, HANDRAILING ( SEE DETAIL 'G' ON STD. DRG. NO. C2405; EXCEPT ON THE UPSLOPE SIDE ) IN LIEU OF STEEL GRATINGS OR CONCRETE COVERS CAN BE ACCEPTED AS AN ALTERNATIVE SAFETY MEASURE FOR CATCHPITS NOT ON A FOOTPATH NOR ADJACENT TO IT. TOP OF THE HANDRAILING SHALL BE 1 000 mm MIN. MEASURED FROM THE ADJACENT GROUND LEVEL.
10. MINIMUM INTERNAL CATCHPIT WIDTH SHALL BE 1 000 mm FOR CATCHPITS WITH A HEIGHT EXCEEDING 1 000 mm MEASURED FROM THE INVERT LEVEL TO THE ADJACENT GROUND LEVEL. AND, STEP IRONS ( SEE DSD STD. DRG. NO. DS1043 ) AT 300 c/c STAGGERED SHALL BE PROVIDED. THICKNESS OF CATCHPIT WALL FOR INSTALLATION OF STEP IRONS SHALL BE INCREASED TO 150 mm.
11. FOR RETROFITTING AN EXISTING CATCHPIT WITH STEEL GRATING, SEE DETAIL 'F' ON STD. DRG. NO. C2405.
12. SUBJECT TO THE APPROVAL OF THE ENGINEER, OTHER MATERIALS CAN ALSO BE USED AS COVERS / GRATINGS.

|             |                         |                  |             |
|-------------|-------------------------|------------------|-------------|
| -           | FORMER DRG. NO. C2406J. | Original Signed  | 03.2015     |
| <b>REF.</b> | <b>REVISION</b>         | <b>SIGNATURE</b> | <b>DATE</b> |

**CATCHPIT WITH TRAP  
(SHEET 2 OF 2)**

|   |                    |
|---|--------------------|
|  <b>CIVIL ENGINEERING AND<br/>DEVELOPMENT DEPARTMENT</b> |                    |
| <b>SCALE</b> 1 : 20   | <b>DRAWING NO.</b> |
| <b>DATE</b> JAN 1991  | <b>C2406 /2</b>    |

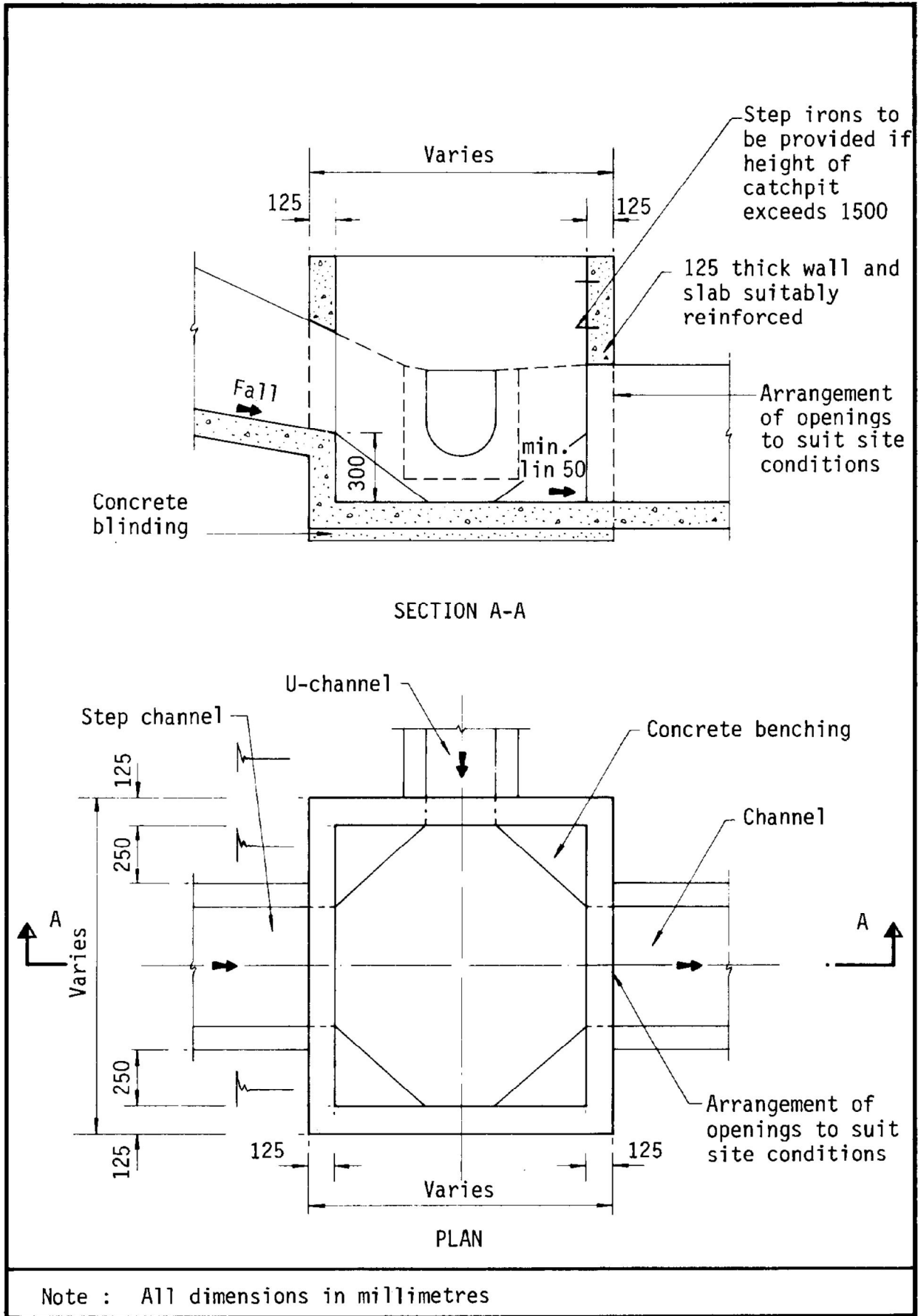
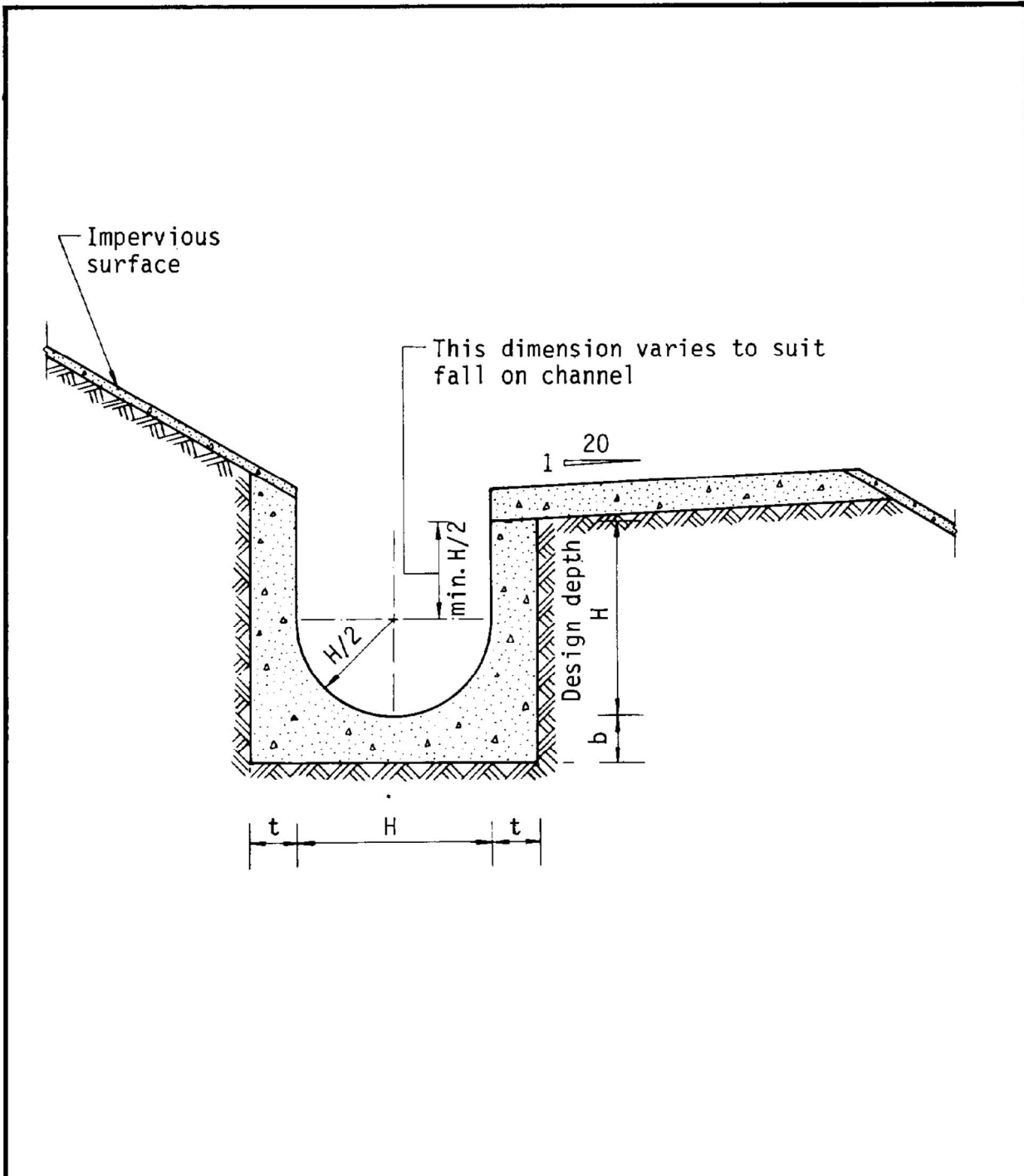


Figure 8.10 - Typical Details of Catchpits



Dimensions of U - channel

| Nominal size of channel H (mm) | Thickness t (mm) | Thickness b (mm) |
|--------------------------------|------------------|------------------|
| 225 to 600                     | 150              | 150              |
| 675 to 1200                    | 175              | 225              |

Figure 8.11 - Typical U-channel Details