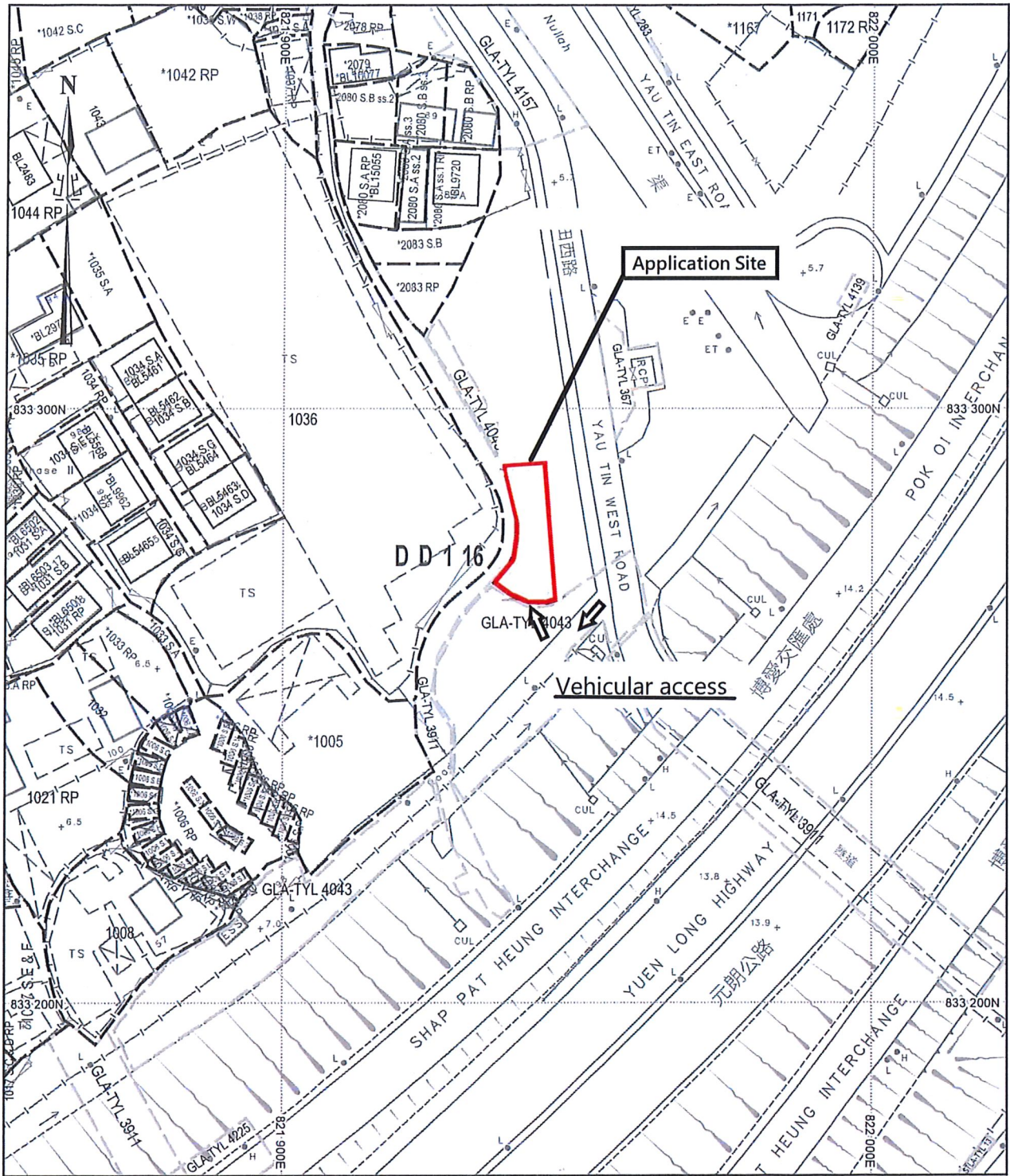
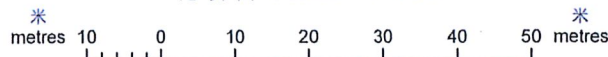


# 地段索引圖 LOT INDEX PLAN



地政總署測繪處 Survey and Mapping Office, Lands Department

比例尺 SCALE 1:1000



Locality : \_\_\_\_\_  
 Lot Index Plan No. : ags\_S00000120400\_0001  
 District Survey Office : Lands Information Center  
 Date : 26-Nov-2023  
 Reference No. : 6-NW-15B

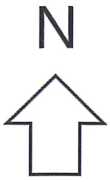
摘要說明：本地段索引圖在其背景的地形圖上標示了各種永久和短期持有的土地的圖像界線。這些土地包括私人地段、政府撥地、短期租約批地，以及其他作核准用途的土地。請注意：(1)本索引圖上的資料會被不時更新而不作事先通知；(2)索引圖的更新或會延後於有關資料的實際變更；以及(3)本索引圖中顯示的界線僅供識別之用，資料是否準確可靠，應徵詢專業土地測量師的意見。

免責說明：如因使用本地段索引圖，或因所依據的本索引圖資料出錯、遺漏、過時或有誤差而引致任何損失或損害，政府概不承擔任何法律責任。

**Explanatory notes :** This plan shows the graphical boundaries of different kinds of permanent and temporary land holdings with the topographic map in the backdrop. The land holdings as shown may include private lots, government land allocations, short term tenancies and other permitted uses of land. It must be noted that: (1) the information shown on this plan is subject to update without prior notification; (2) there may be time lag between an update and the related changes taken place; and (3) the graphical boundaries as shown are for identification purpose only and interpretation of their accuracy and reliability requires the advice from professional land surveyor.

**Disclaimer :** The Government shall not be responsible for any loss or damage howsoever arising from the use of this plan or in reliance upon its correctness, completeness, timeliness or accuracy.

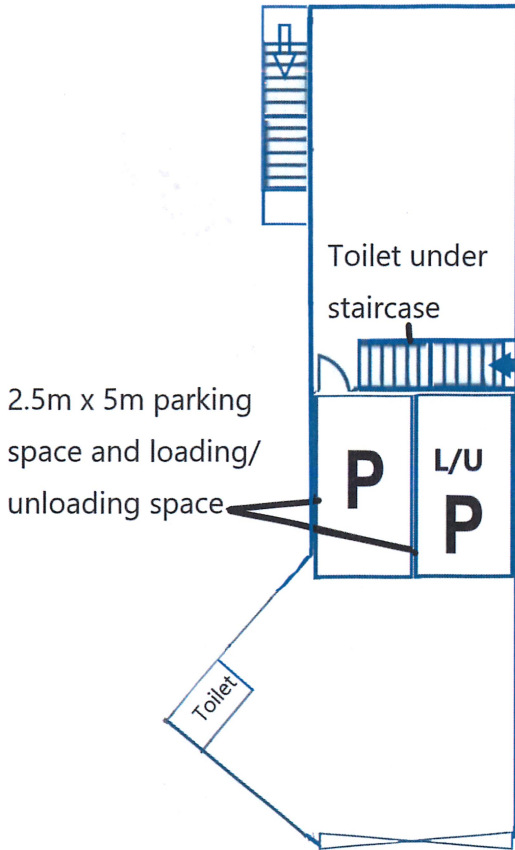
香港特別行政區政府 — 版權所有  
 © Copyright reserved - Hong Kong SAR Government  
 SMO-P01 20231126145513 10



# Proposed floor plan

G/F

1/F



## **Structure**

G/F: Shop & Services

Not exceeding 141 sqm

1/F: Office

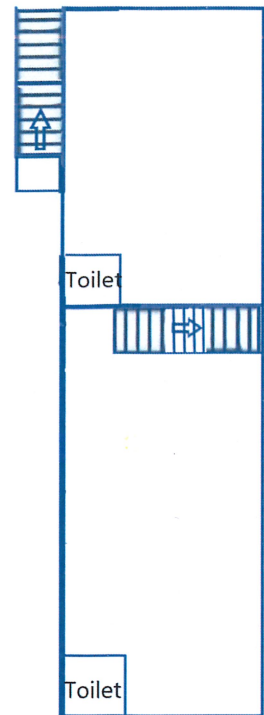
Not exceeding 89 sqm

Covered area: Not exceeding  
141 sqm

GFA: Not exceeding 230 sqm

Height: Not exceeding 8m

no. of storey: 2



5.3m wide ingress/Egress

Scale 1:200