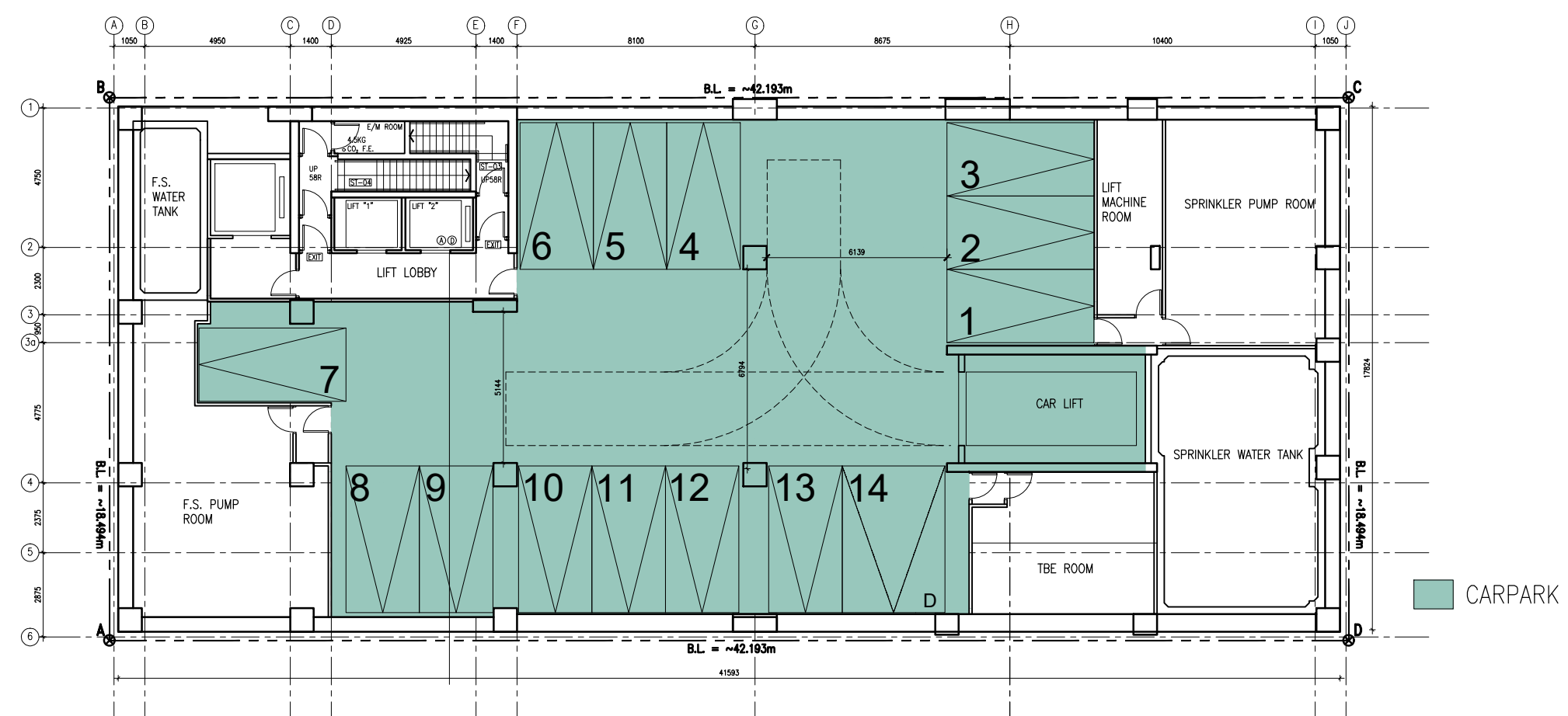


Appendix 2

Proposed Development Scheme

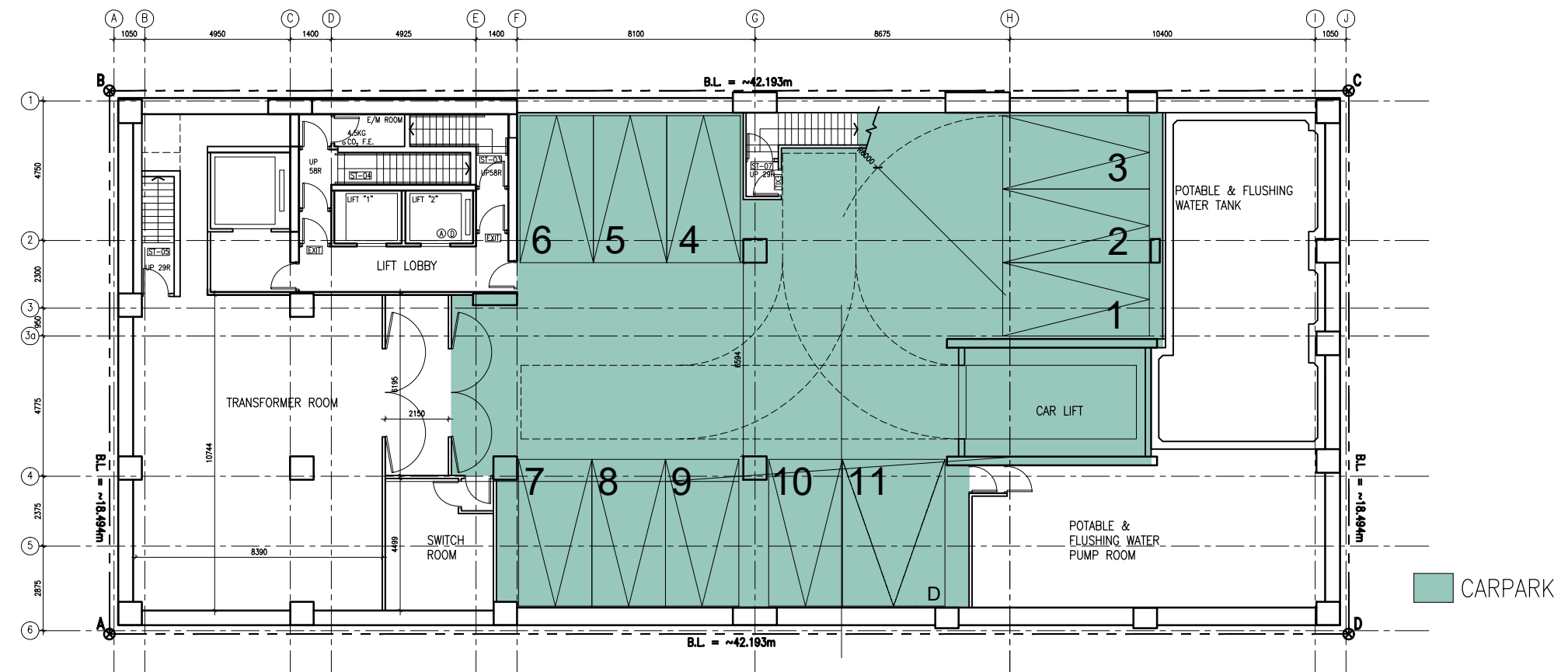
- This drawing and the contents are the copyright of I Consultants & Contracting Co. Ltd.
 - No part of the drawing and the design contained herein may be reproduced without the prior written consent of a director of I Consultants & Contracting Co. Ltd.
 - Do not take measurements directly from this drawing.
 - Check and verify all dimensions on site.
 - Read this drawing in conjunction with the specifications and all other related drawings.
 - Notify the Architect immediately of any discrepancy found herein.



B2/F LAYOUT PLAN

Rev.	Date	Description
Project Name:		
Redevelopment of Yuen Long Theatre at Lot No. 3678 in D.D. 120, Yuen Long, N.T.		
Planning Consultant : DeSPACE (International) Limited		
Architect : I Consultants & Contracting Company Limited		
Traffic Consultant : CTA Consultants Limited		
Environmental Consultant : BeeXergy Consulting Limited		
Structural and Geotechnical Engineer : S. T. Wong & Partners Limited		
Drawing Title:		
B2/F LAYOUT PLAN		
Designed by: JODY		
Drawn by: JODY		
Checked by: CAL.		
Scale: 1 : 200	Paper: A3	
Drawing Number		Revision Letter
GBP001		

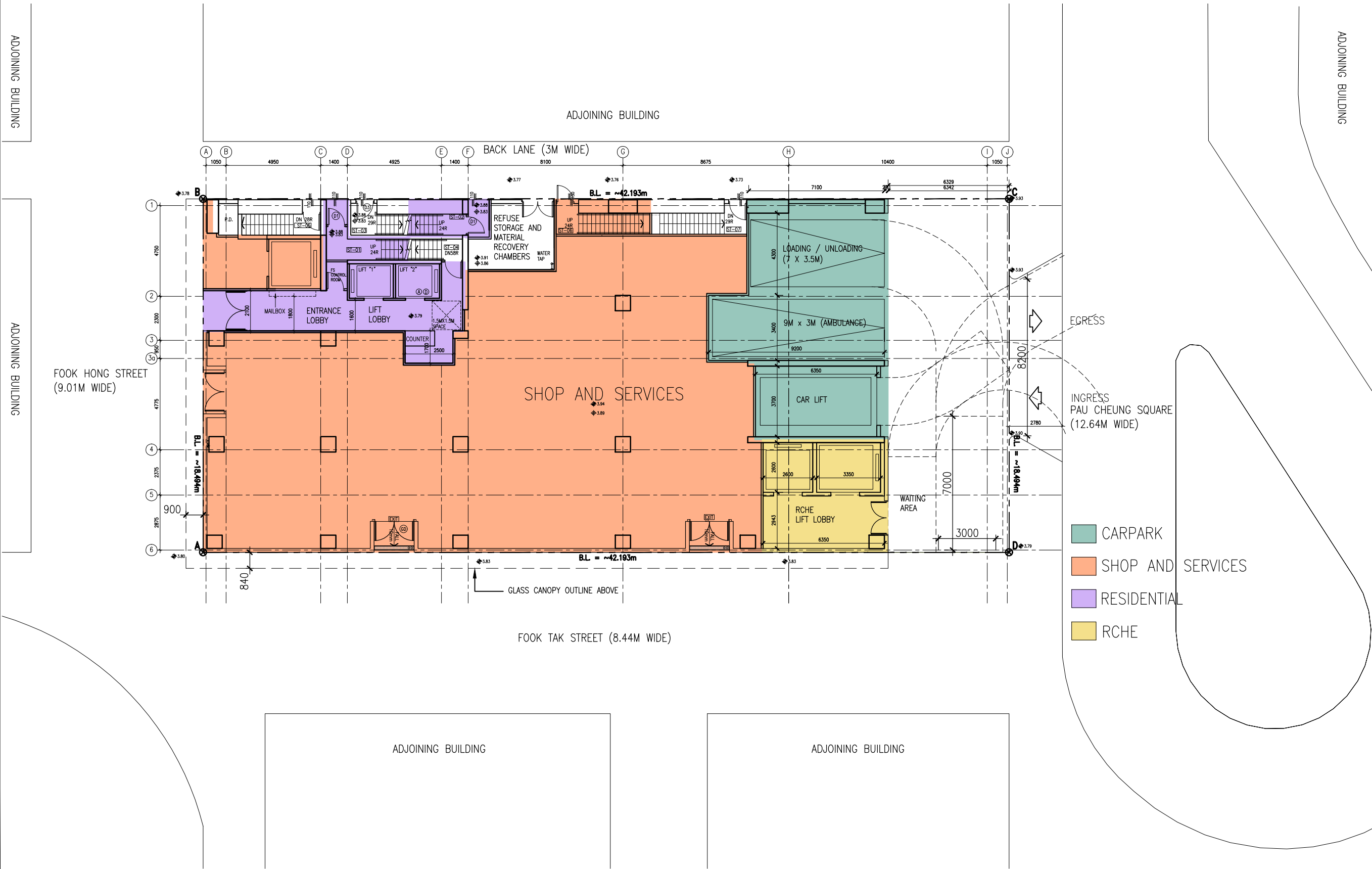
- This drawing and the contents are the copyright of I Consultants & Contracting Co. Ltd.
 - No part of the drawing and the design contained herein may be reproduced without the prior written consent of a director of I Consultants & Contracting Co. Ltd.
 - Do not take measurements directly from this drawing.
 - Check and verify all dimensions on site.
 - Read this drawing in conjunction with the specifications and all other related drawings.
 - Notify the Architect immediately of any discrepancy found herein.



B1/F LAYOUT PLAN

Rev.	Date	Description
Project Name:		
Redevelopment of Yuen Long Theatre at Lot No. 3678 in D.D. 120, Yuen Long, N.T.		
Planning Consultant : DeSPACE (International) Limited		
Architect : I Consultants & Contracting Company Limited		
Traffic Consultant : CTA Consultants Limited		
Environmental Consultant : BeeXergy Consulting Limited		
Structural and Geotechnical Engineer : S. T. Wong & Partners Limited		
Drawing Title:		
B1/F LAYOUT PLAN		
Designed by: JODY		Drawn by: JODY
Checked by: CAL.		Scale: 1 : 200
Drawing Number: GBP002		Paper: A3
		Revision Letter

- This drawing and the contents are the copyright of I Consultants & Contracting Co. Ltd.
 - No part of the drawing and the design contained herein may be reproduced without the prior written consent of a director of I Consultants & Contracting Co. Ltd.
 - Do not take measurements directly from this drawing.
 - Check and verify all dimensions on site.
 - Read this drawing in conjunction with the specifications and all other related drawings.
 - Notify the Architect immediately of any discrepancy found herein.

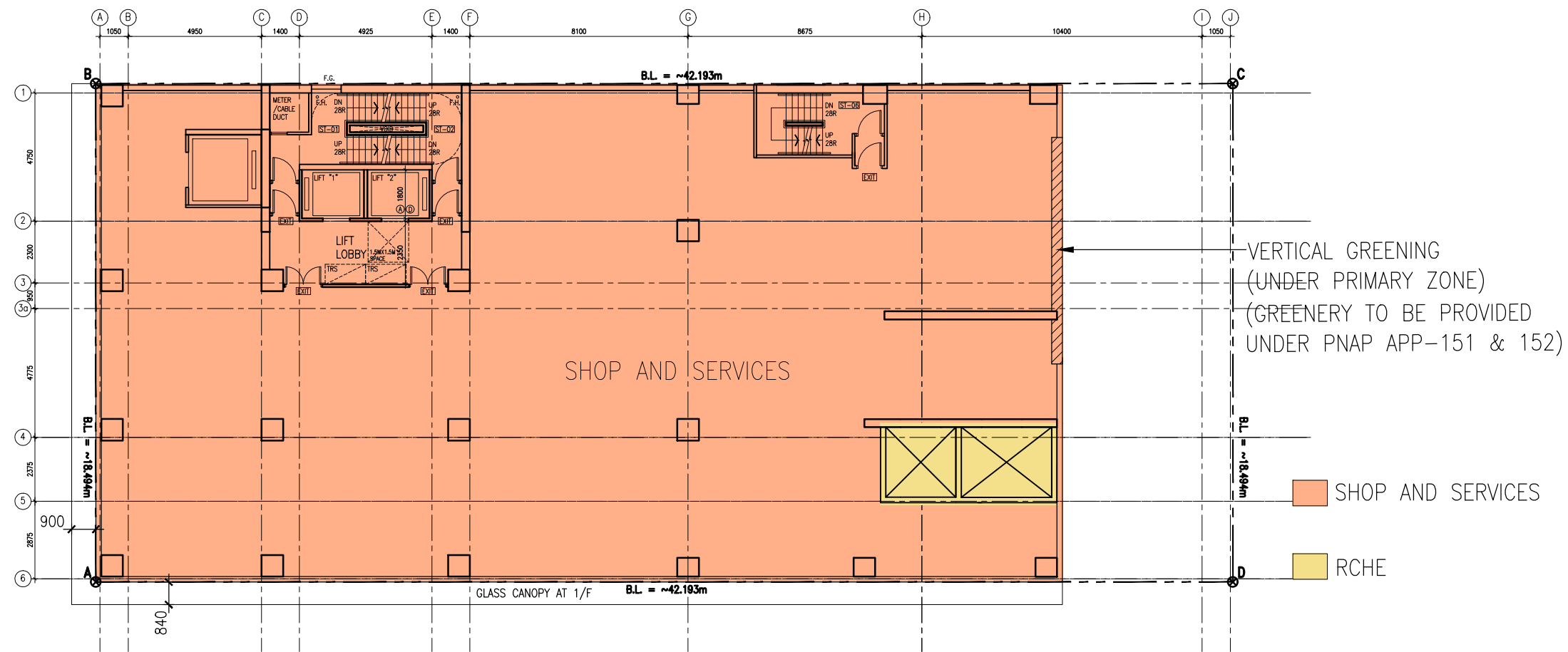


- CARPARK
- SHOP AND SERVICES
- RESIDENTIAL
- RCHE

G/F LAYOUT PLAN

Rev.	Date	Description
Project Name:		
Redevelopment of Yuen Long Theatre at Lot No. 3678 in D.D. 120, Yuen Long, N.T.		
Planning Consultant : DeSPACE (International) Limited		
Architect : I Consultants & Contracting Company Limited		
Traffic Consultant : CTA Consultants Limited		
Environmental Consultant : BeeXergy Consulting Limited		
Structural and Geotechnical Engineer : S. T. Wong & Partners Limited		
Drawing Title:		
G/F LAYOUT PLAN		
Designed by: JODY		Revision Letter
Drawn by: JODY		
Checked by: CAL.		
Scale: 1 : 200	Paper: A3	
Drawing Number: GBP003		

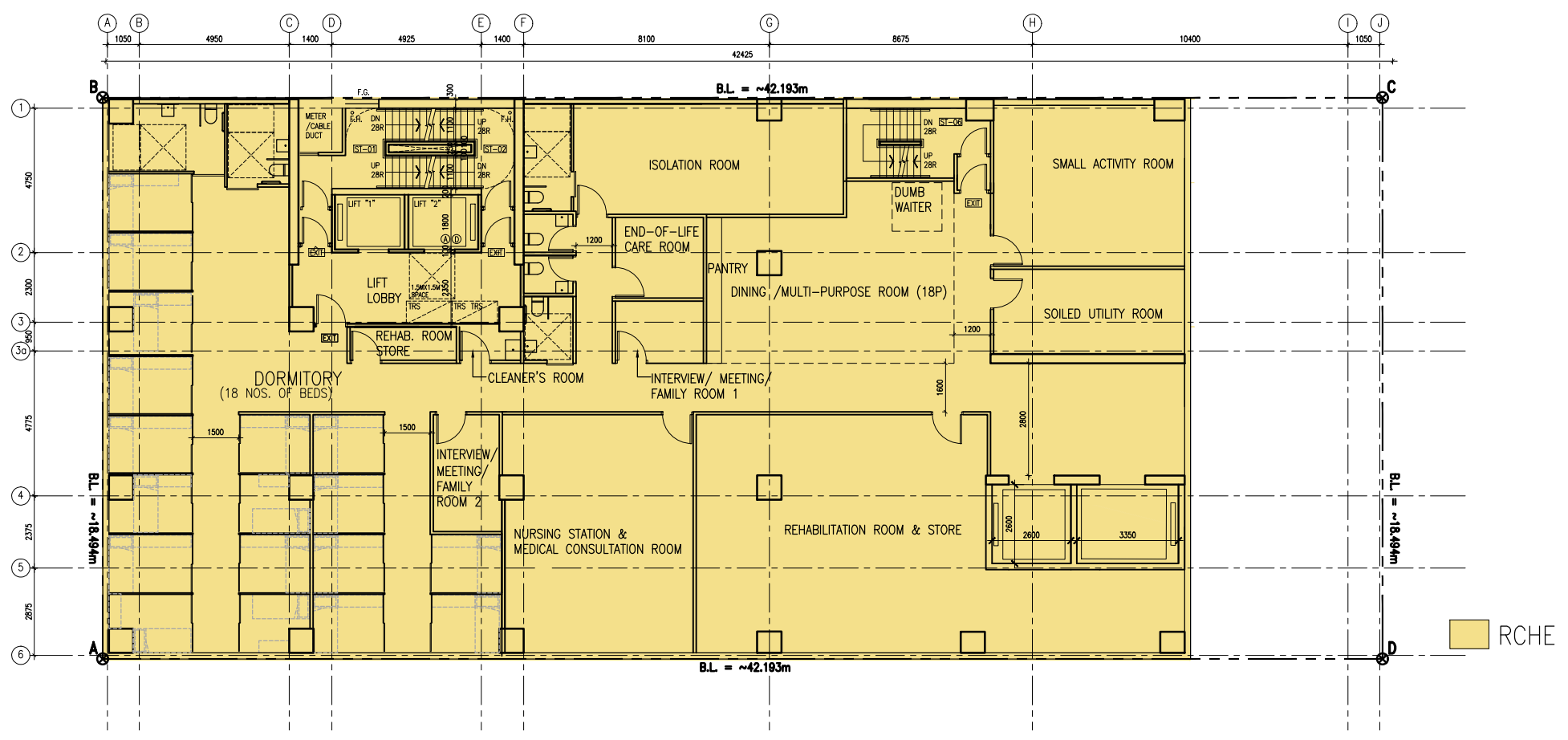
- This drawing and the contents are the copyright of I Consultants & Contracting Co. Ltd.
 - No part of the drawing and the design contained herein may be reproduced without the prior written consent of a director of I Consultants & Contracting Co. Ltd.
 - Do not take measurements directly from this drawing.
 - Check and verify all dimensions on site.
 - Read this drawing in conjunction with the specifications and all other related drawings.
 - Notify the Architect immediately of any discrepancy found herein.



1/F TO 2/F LAYOUT PLAN

Rev.	Date	Description
Project Name:		
Redevelopment of Yuen Long Theatre at Lot No. 3678 in D.D. 120, Yuen Long, N.T.		
Planning Consultant : DeSPACE (International) Limited		
Architect : I Consultants & Contracting Company Limited		
Traffic Consultant : CTA Consultants Limited		
Environmental Consultant : BeeXergy Consulting Limited		
Structural and Geotechnical Engineer : S. T. Wong & Partners Limited		
Drawing Title:		
1/F TO 2/F LAYOUT PLAN		
Designed by: JODY		
Drawn by: JODY		
Checked by: CAL.		
Scale: 1 : 200	Paper: A3	
Drawing Number		Revision Letter
GBP004		

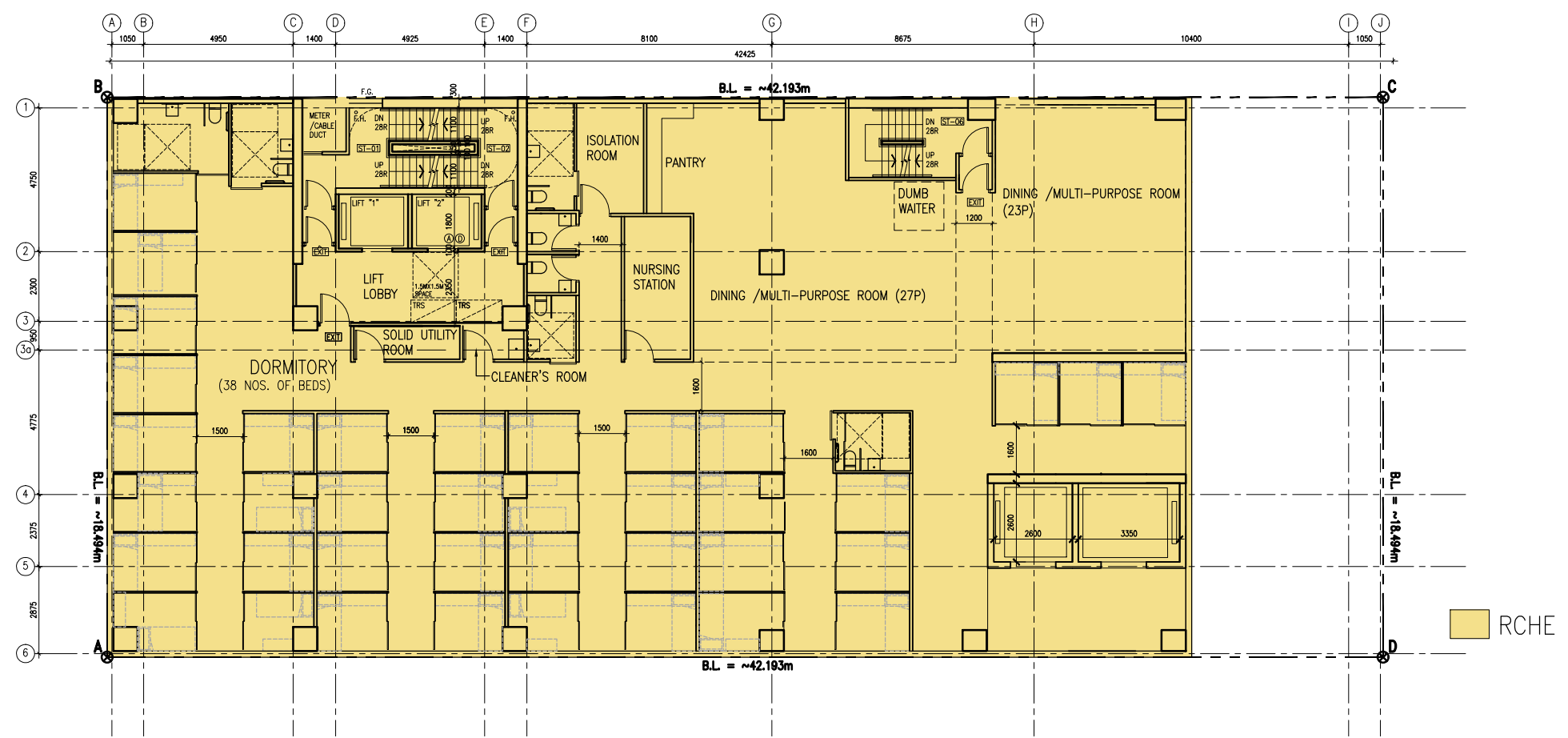
- This drawing and the contents are the copyright of I Consultants & Contracting Co. Ltd.
 - No part of the drawing and the design contained herein may be reproduced without the prior written consent of a director of I Consultants & Contracting Co. Ltd.
 - Do not take measurements directly from this drawing.
 - Check and verify all dimensions on site.
 - Read this drawing in conjunction with the specifications and all other related drawings.
 - Notify the Architect immediately of any discrepancy found herein.



3/F LAYOUT PLAN (DORMITORY FOR RCHE)

Rev.	Date	Description
Project Name:		
Redevelopment of Yuen Long Theatre at Lot No. 3678 in D.D. 120, Yuen Long, N.T.		
Planning Consultant : DeSPACE (International) Limited		
Architect : I Consultants & Contracting Company Limited		
Traffic Consultant : CTA Consultants Limited		
Environmental Consultant : BeeXergy Consulting Limited		
Structural and Geotechnical Engineer : S. T. Wong & Partners Limited		
Drawing Title:		
3/F LAYOUT PLAN		
Designed by:		JODY
Drawn by:		JODY
Checked by:		CAL.
Scale: 1 : 200	Paper:	A3
Drawing Number		Revision Letter
GBP005		

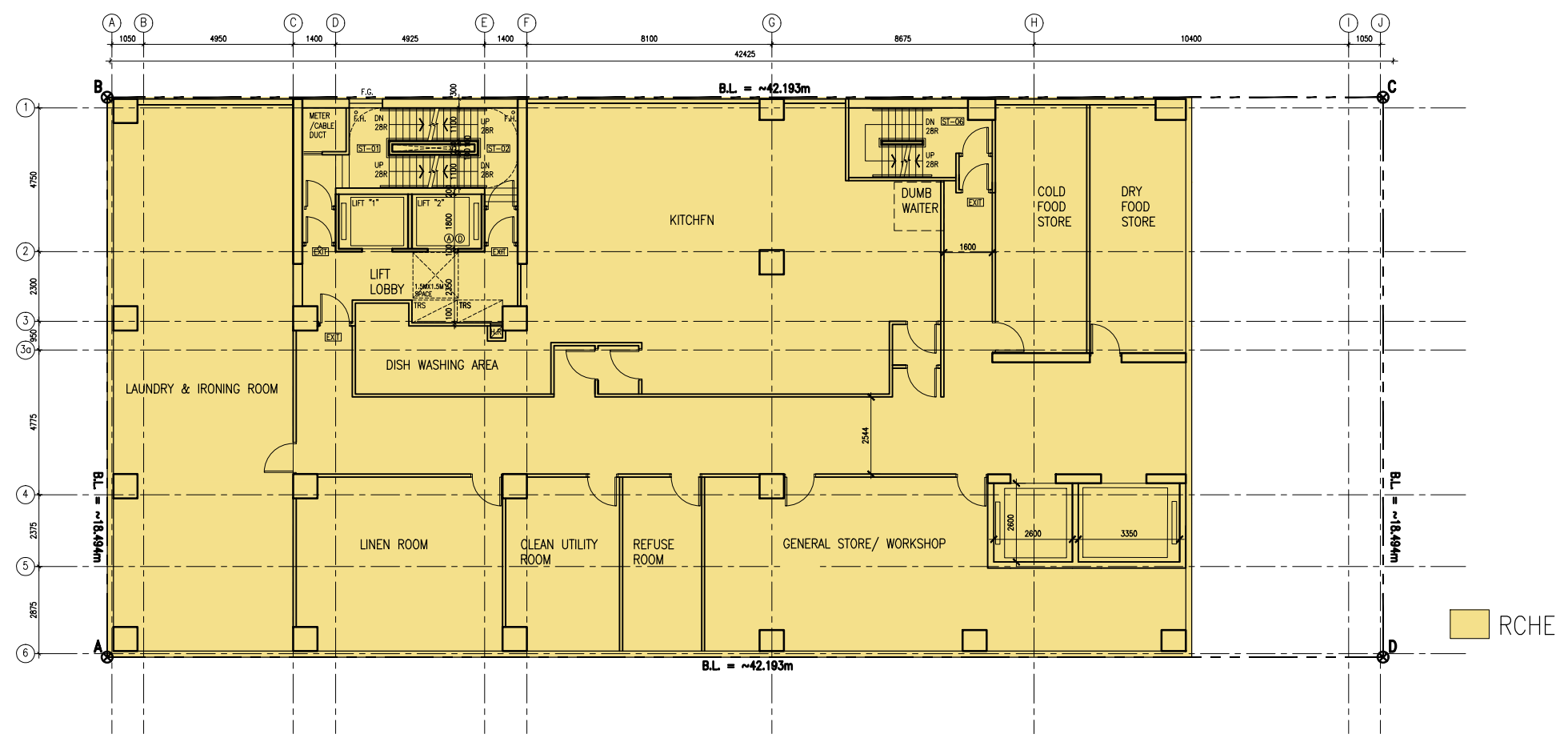
- This drawing and the contents are the copyright of I Consultants & Contracting Co. Ltd.
 - No part of the drawing and the design contained herein may be reproduced without the prior written consent of a director of I Consultants & Contracting Co. Ltd.
 - Do not take measurements directly from this drawing.
 - Check and verify all dimensions on site.
 - Read this drawing in conjunction with the specifications and all other related drawings.
 - Notify the Architect immediately of any discrepancy found herein.



4/F TO 7/F LAYOUT PLAN (DORMITORY FOR RCHE)

Rev.	Date	Description
Project Name:		
Redevelopment of Yuen Long Theatre at Lot No. 3678 in D.D. 120, Yuen Long, N.T.		
Planning Consultant : DeSPACE (International) Limited		
Architect : I Consultants & Contracting Company Limited		
Traffic Consultant : CTA Consultants Limited		
Environmental Consultant : BeeXergy Consulting Limited		
Structural and Geotechnical Engineer : S. T. Wong & Partners Limited		
Drawing Title:		
4/F TO 7/F LAYOUT PLAN		
Designed by: JODY		
Drawn by: JODY		
Checked by: CAL.		
Scale: 1 : 200	Paper: A3	
Drawing Number		Revision Letter
GBP006		

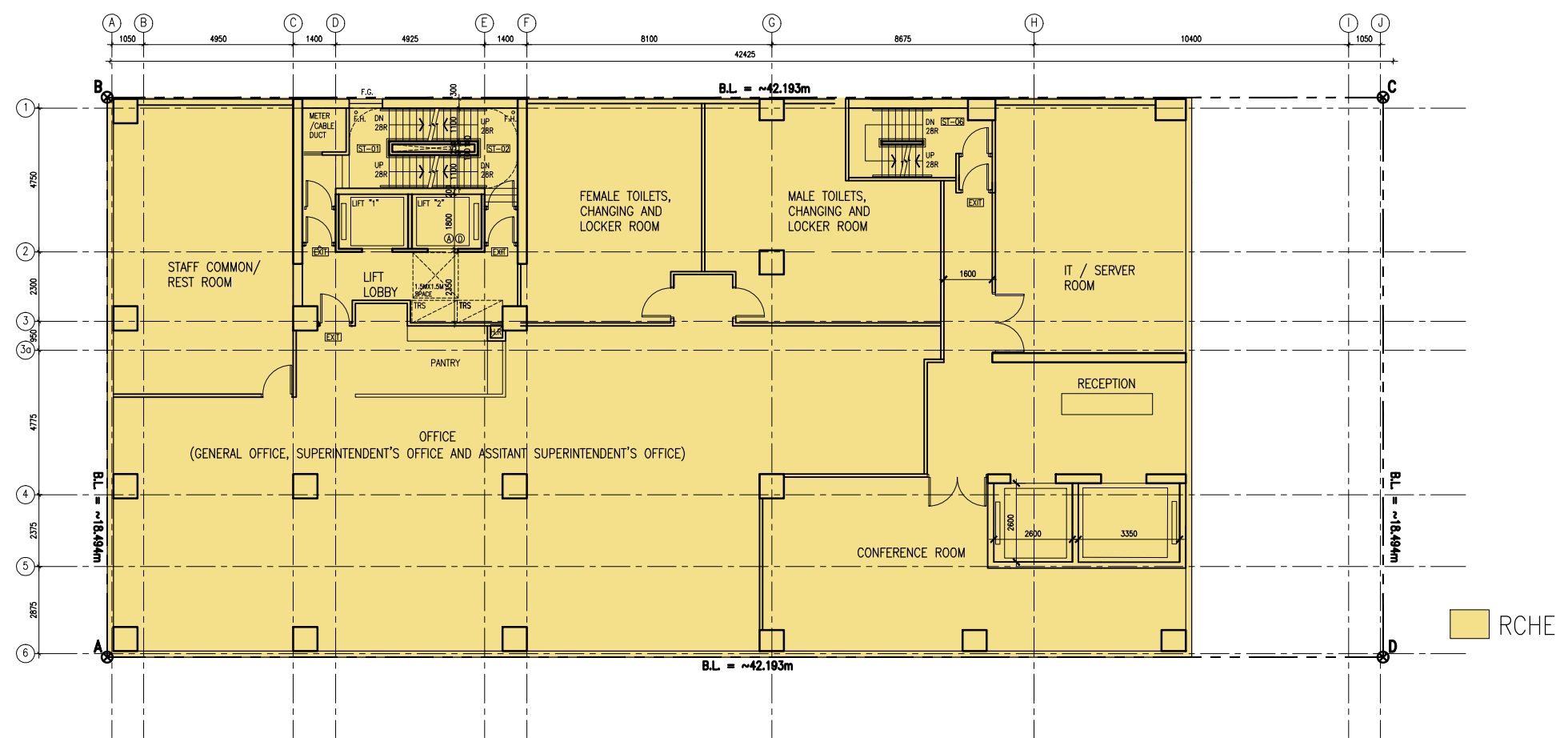
- This drawing and the contents are the copyright of I Consultants & Contracting Co. Ltd.
 - No part of the drawing and the design contained herein may be reproduced without the prior written consent of a director of I Consultants & Contracting Co. Ltd.
 - Do not take measurements directly from this drawing.
 - Check and verify all dimensions on site.
 - Read this drawing in conjunction with the specifications and all other related drawings.
 - Notify the Architect immediately of any discrepancy found herein.



8/F LAYOUT PLAN (OFFICE & BOH FOR RCHE)

Rev.	Date	Description
Project Name:		
Redevelopment of Yuen Long Theatre at Lot No. 3678 in D.D. 120, Yuen Long, N.T.		
Planning Consultant : DeSPACE (International) Limited		
Architect : I Consultants & Contracting Company Limited		
Traffic Consultant : CTA Consultants Limited		
Environmental Consultant : BeeXergy Consulting Limited		
Structural and Geotechnical Engineer : S. T. Wong & Partners Limited		
Drawing Title:		
8/F LAYOUT PLAN		
Designed by:		JODY
Drawn by:		JODY
Checked by:		CAL.
Scale: 1 : 200	Paper:	A3
Drawing Number		Revision Letter
GBP007		

- This drawing and the contents are the copyright of I Consultants & Contracting Co. Ltd.
 - No part of the drawing and the design contained herein may be reproduced without the prior written consent of a director of I Consultants & Contracting Co. Ltd.
 - Do not take measurements directly from this drawing.
 - Check and verify all dimensions on site.
 - Read this drawing in conjunction with the specifications and all other related drawings.
 - Notify the Architect immediately of any discrepancy found herein.



9/F LAYOUT PLAN (OFFICE & BOH FOR RCHE)

Rev.	Date	Description
Project Name:		
Redevelopment of Yuen Long Theatre at Lot No. 3678 in D.D. 120, Yuen Long, N.T.		
Planning Consultant : DeSPACE (International) Limited		
Architect : I Consultants & Contracting Company Limited		
Traffic Consultant : CTA Consultants Limited		
Environmental Consultant : BeeXergy Consulting Limited		
Structural and Geotechnical Engineer : S. T. Wong & Partners Limited		
Drawing Title:		
9/F LAYOUT PLAN		
Designed by: JODY		
Drawn by: JODY		
Checked by: CAL.		
Scale: 1 : 200	Paper: A3	
Drawing Number		Revision Letter
GBP008		

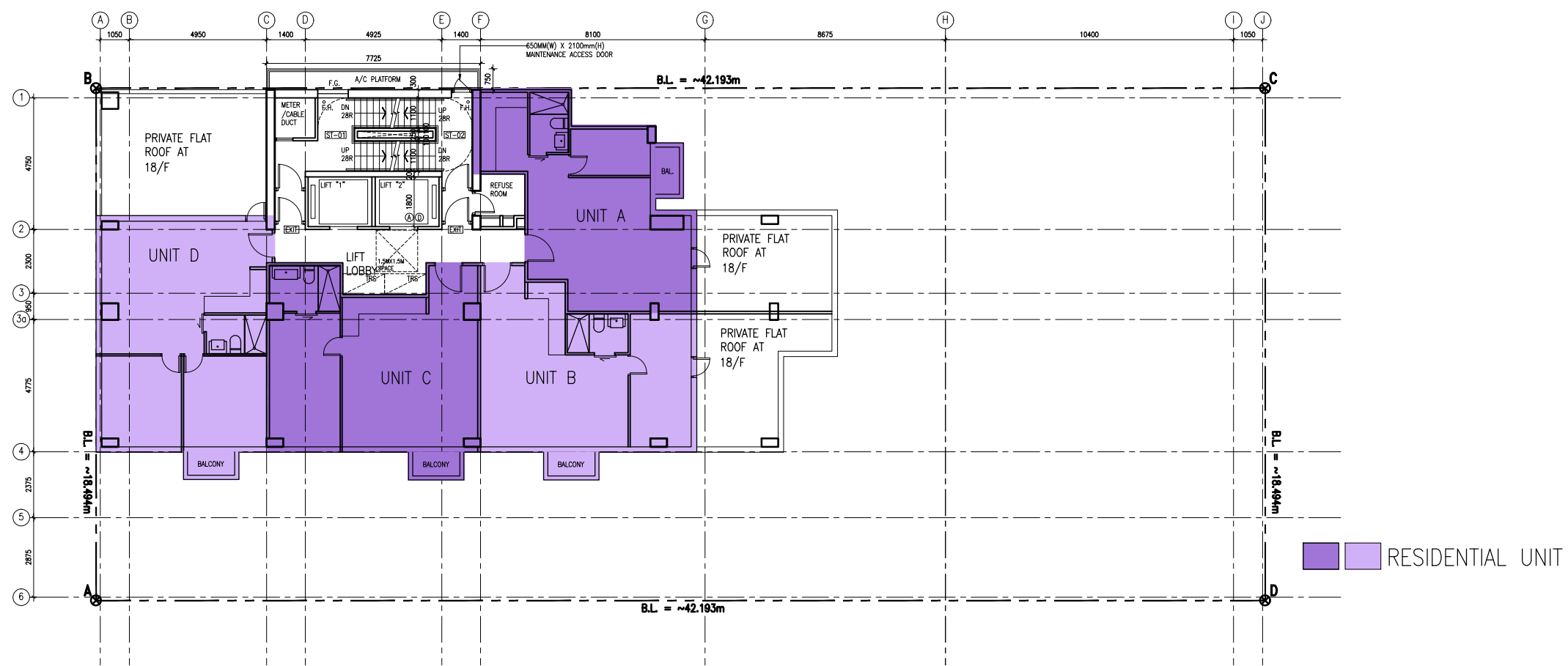
- This drawing and the contents are the copyright of I Consultants & Contracting Co. Ltd.
 - No part of the drawing and the design contained herein may be reproduced without the prior written consent of a director of I Consultants & Contracting Co. Ltd.
 - Do not take measurements directly from this drawing.
 - Check and verify all dimensions on site.
 - Read this drawing in conjunction with the specifications and all other related drawings.
 - Notify the Architect immediately of any discrepancy found herein.



10/F TO 17/F LAYOUT PLAN

Rev.	Date	Description
Project Name:		
Redevelopment of Yuen Long Theatre at Lot No. 3678 in D.D. 120, Yuen Long, N.T.		
Planning Consultant : DeSPACE (International) Limited		
Architect : I Consultants & Contracting Company Limited		
Traffic Consultant : CTA Consultants Limited		
Environmental Consultant : BeeXergy Consulting Limited		
Structural and Geotechnical Engineer : S. T. Wong & Partners Limited		
Drawing Title:		
10/F TO 17/F LAYOUT PLAN		
Designed by:		JODY
Drawn by:		JODY
Checked by:		CAL.
Scale: 1 : 200	Paper:	A3
Drawing Number		Revision Letter
GBP009		

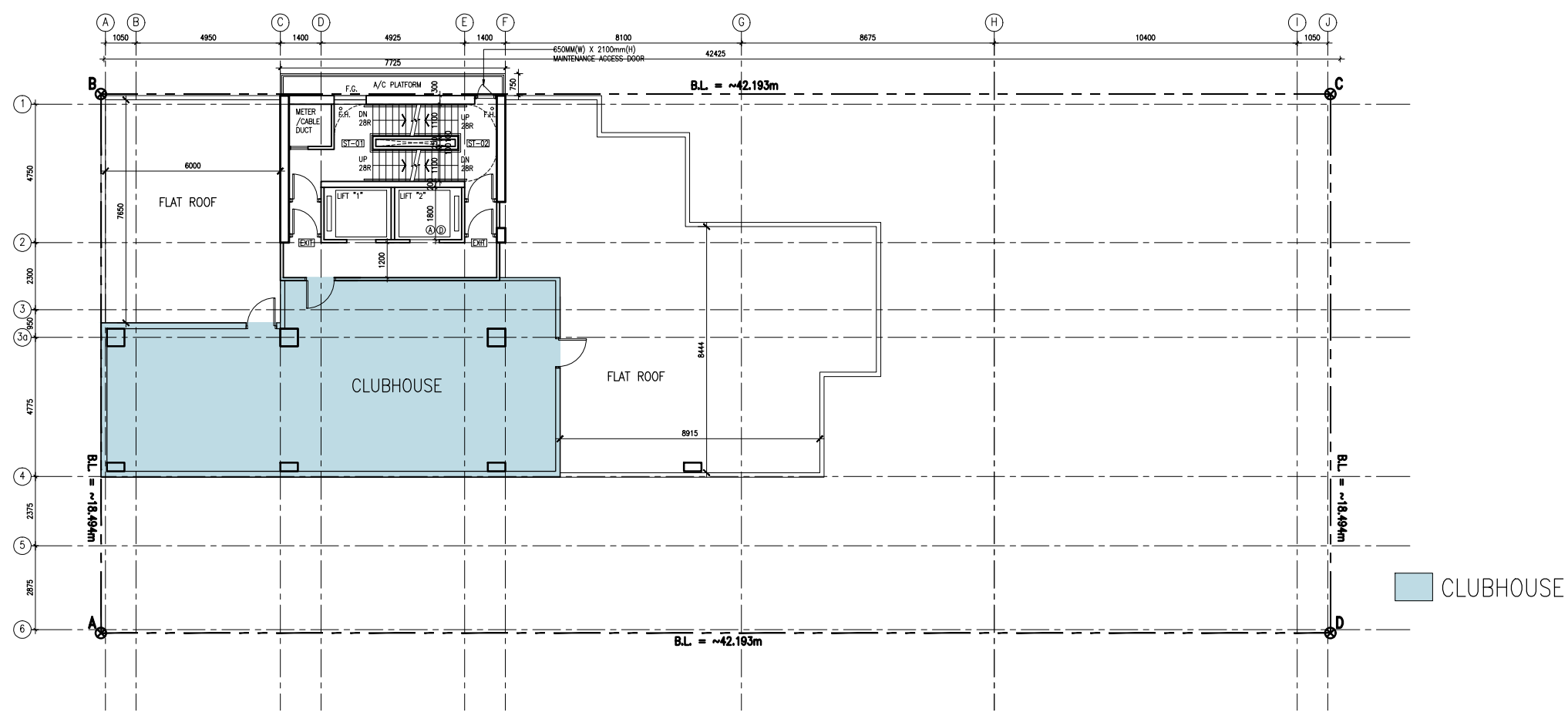
- This drawing and the contents are the copyright of I Consultants & Contracting Co. Ltd.
 - No part of the drawing and the design contained herein may be reproduced without the prior written consent of a director of I Consultants & Contracting Co. Ltd.
 - Do not take measurements directly from this drawing.
 - Check and verify all dimensions on site.
 - Read this drawing in conjunction with the specifications and all other related drawings.
 - Notify the Architect immediately of any discrepancy found herein.



18/F TO 19/F LAYOUT PLAN

Rev.	Date	Description
Project Name:		
Redevelopment of Yuen Long Theatre at Lot No. 3678 in D.D. 120, Yuen Long, N.T.		
Planning Consultant : DeSPACE (International) Limited		
Architect : I Consultants & Contracting Company Limited		
Traffic Consultant : CTA Consultants Limited		
Environmental Consultant : BeeXergy Consulting Limited		
Structural and Geotechnical Engineer : S. T. Wong & Partners Limited		
Drawing Title:		
18/F TO 19/F LAYOUT PLAN		
Designed by:		JODY
Drawn by:		JODY
Checked by:		CAL.
Scale: 1 : 200	Paper:	A3
Drawing Number		Revision Letter
GBP010		

- This drawing and the contents are the copyright of I Consultants & Contracting Co. Ltd.
 - No part of the drawing and the design contained herein may be reproduced without the prior written consent of a director of I Consultants & Contracting Co. Ltd.
 - Do not take measurements directly from this drawing.
 - Check and verify all dimensions on site.
 - Read this drawing in conjunction with the specifications and all other related drawings.
 - Notify the Architect immediately of any discrepancy found herein.



20/F (CLUBHOUSE) LAYOUT PLAN

Rev.	Date	Description
------	------	-------------

Project Name:
 Redevelopment of Yuen Long Theatre at Lot No. 3678 in D.D. 120, Yuen Long, N.T.

Planning Consultant :
 DeSPACE (International) Limited

Architect :
 I Consultants & Contracting Company Limited

Traffic Consultant :
 CTA Consultants Limited

Environmental Consultant :
 BeeXergy Consulting Limited

Structural and Geotechnical Engineer :
 S. T. Wong & Partners Limited

Drawing Title:
 20/F (CLUBHOUSE) LAYOUT PLAN

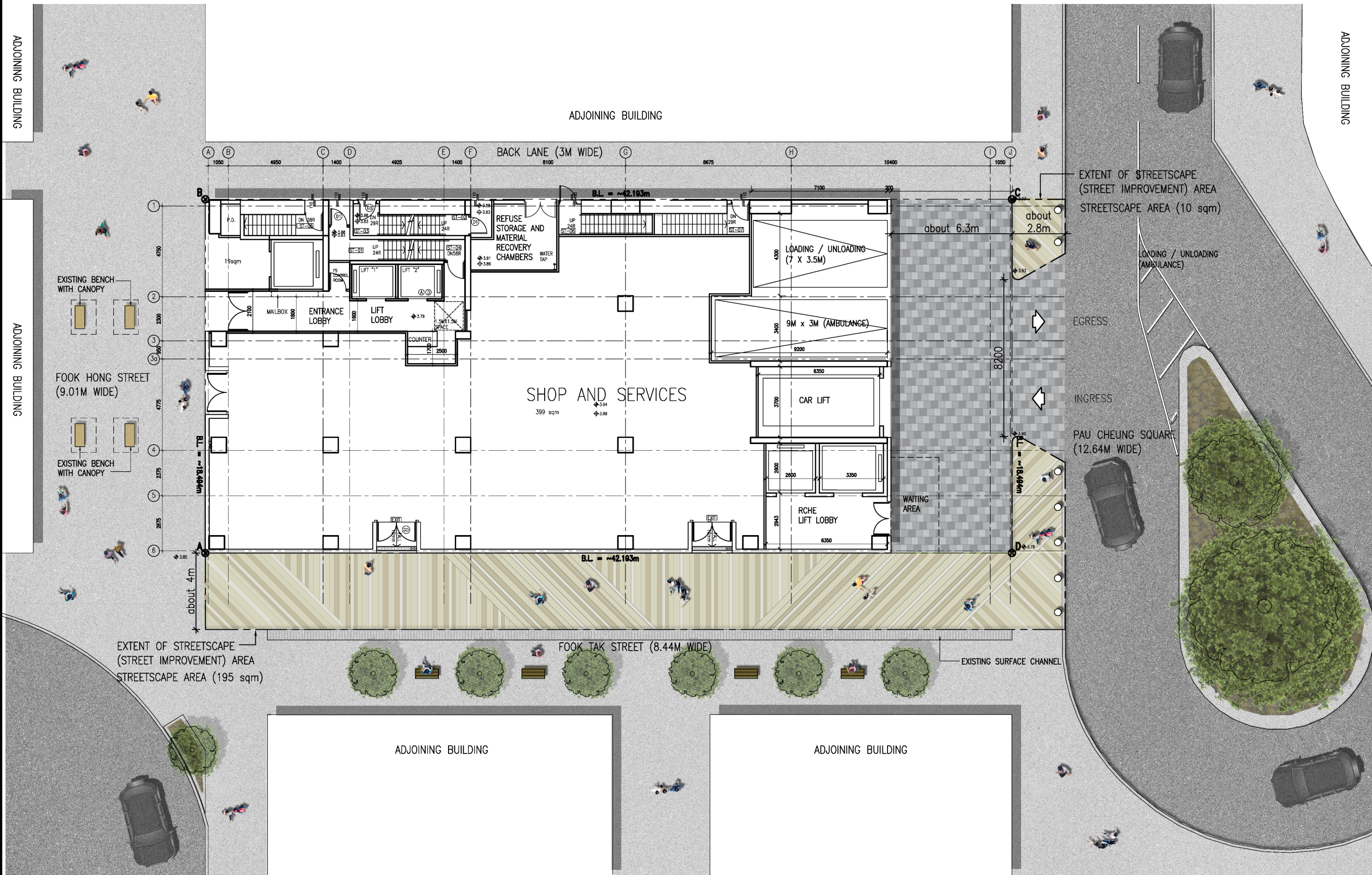
Designed by: JODY
 Drawn by: JODY
 Checked by: CAL.
 Scale: 1 : 200 Paper: A3

Drawing Number: GBP011

LEGEND

-  EXISTING TREE
-  EXISTING TREE
-  PAVING AREA (205 M²)
-  NEW BENCH
-  NEW BOLLARD

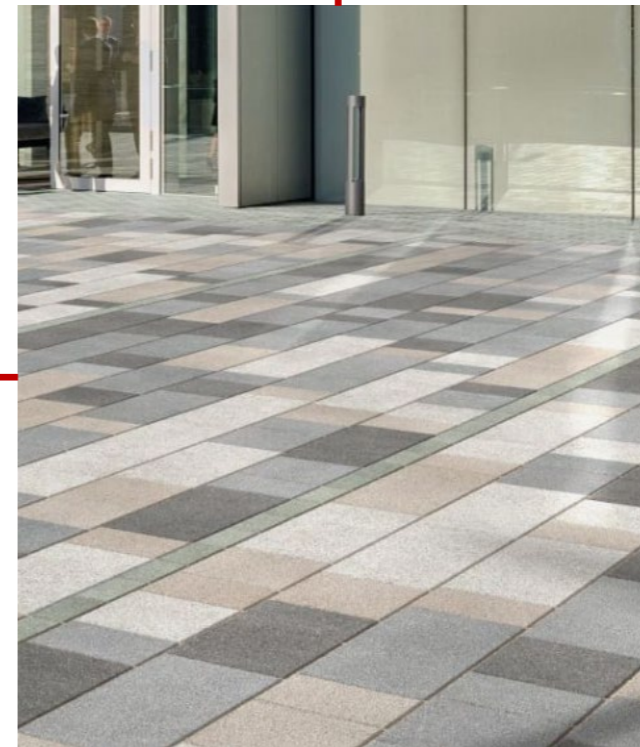
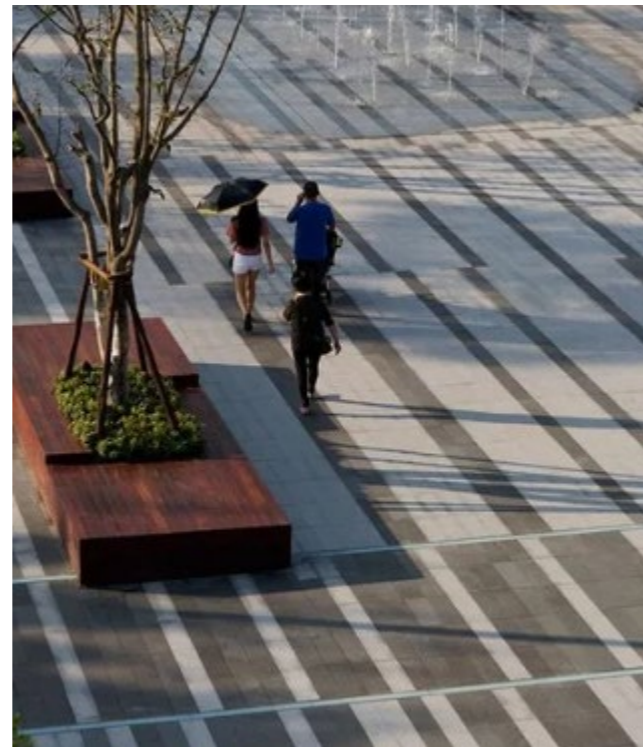
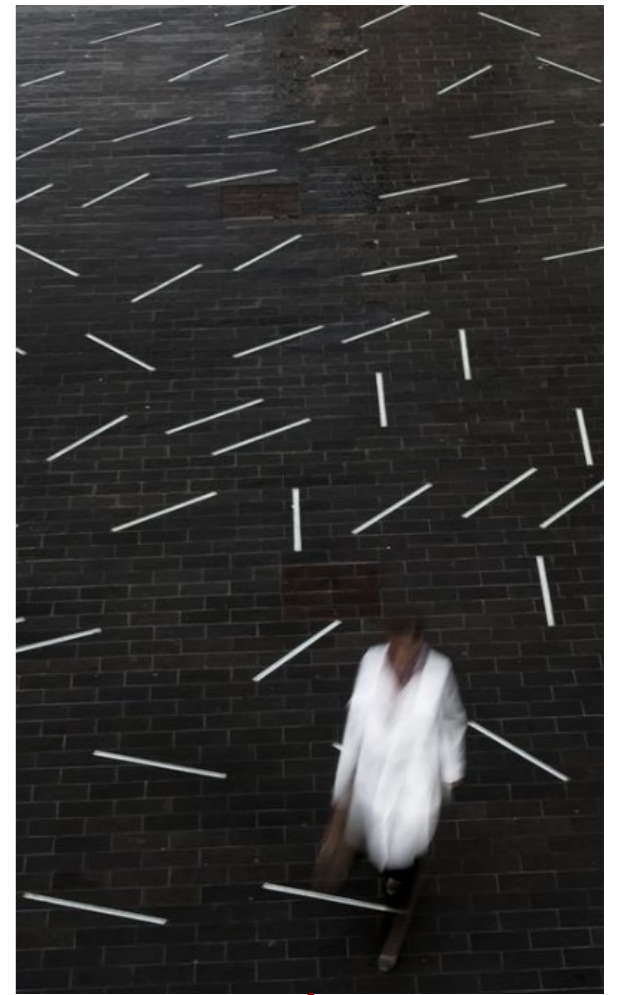
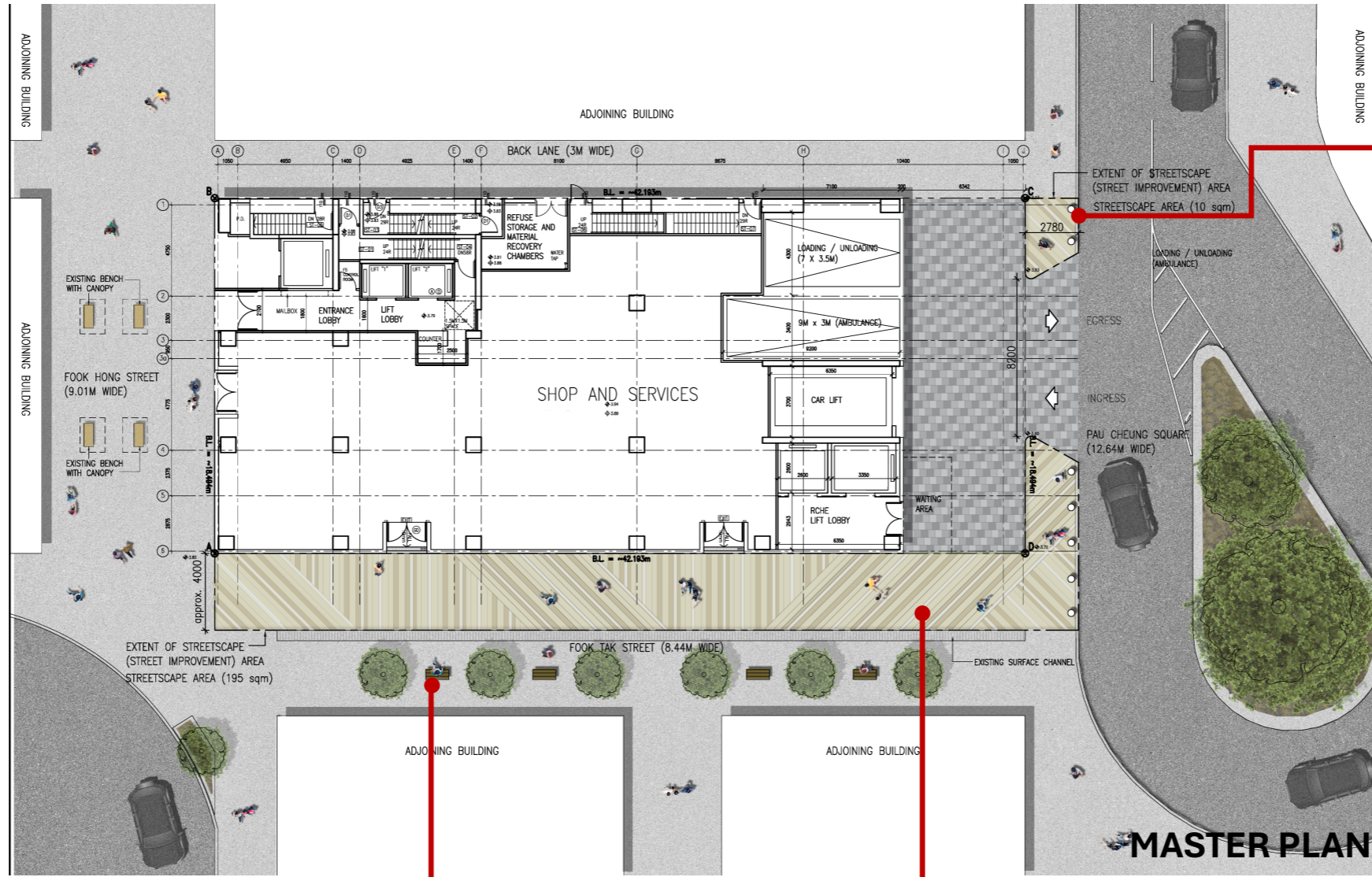
- This drawing and the contents are the copyright of I Consultants & Contracting Co. Ltd.
 - No part of the drawing and the design contained herein may be reproduced without the prior written consent of a director of I Consultants & Contracting Co. Ltd.
 - Do not take measurements directly from this drawing.
 - Check and verify all dimensions on site.
 - Read this drawing in conjunction with the specifications and all other related drawings.
 - Notify the Architect immediately of any discrepancy found herein.



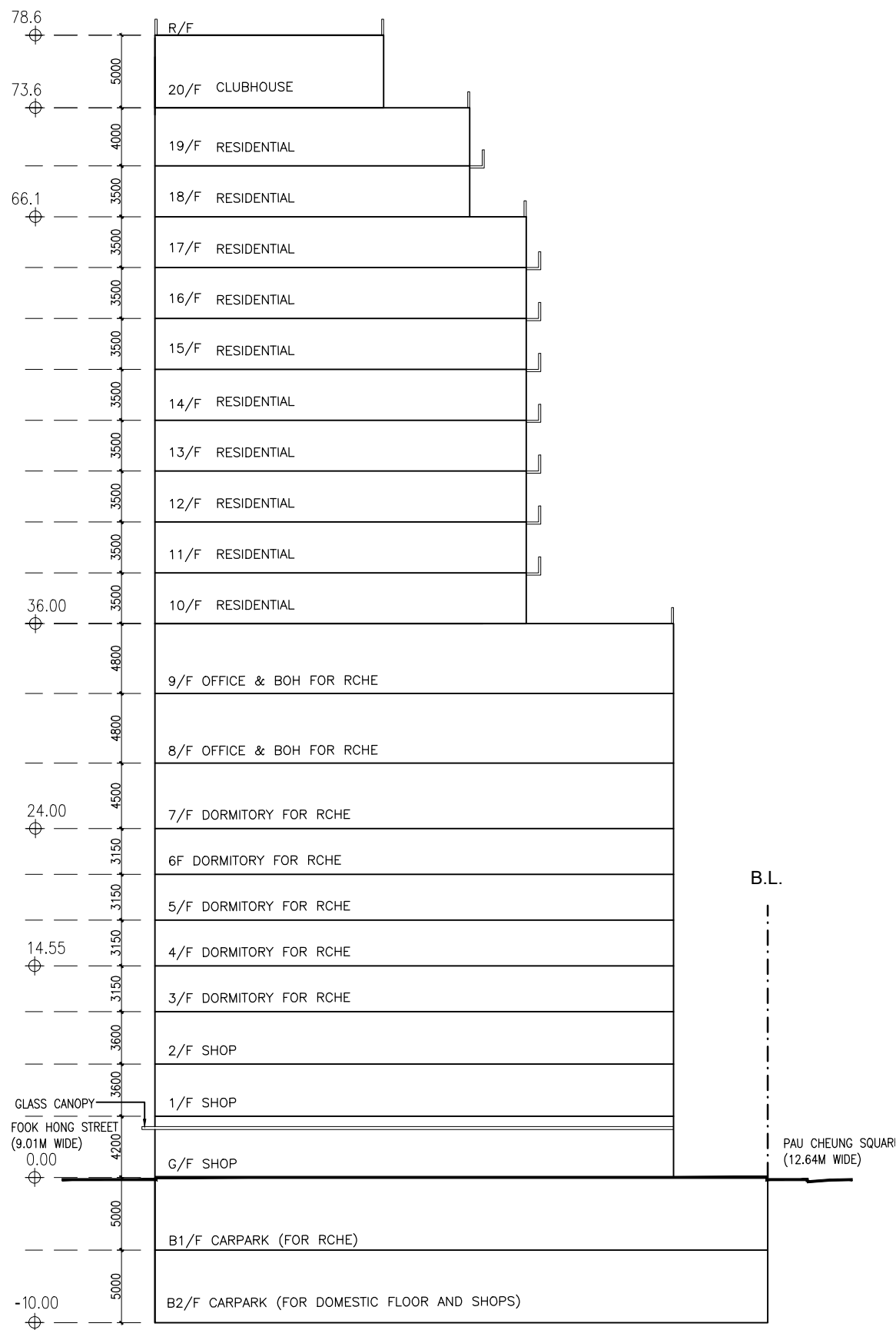
PROPOSED STREETScape PLAN

Rev.	Date	Description
Project Name: Redevelopment of Yuen Long Theatre at Lot No. 3678 in D.D. 120, Yuen Long, N.T.		
Planning Consultant: DeSPACE (International) Limited		
Architect: I Consultants & Contracting Company Limited		
Traffic Consultant: CTA Consultants Limited		
Environmental Consultant: BeeXergy Consulting Limited		
Structural and Geotechnical Engineer: S. T. Wong & Partners Limited		
Drawing Title: PROPOSED STREETScape PLAN		
Designed by: JODY		Revision Letter
Drawn by: JODY		
Checked by: CAL.		
Scale: 1 : 200	Paper: A3	
Drawing Number GBP012		

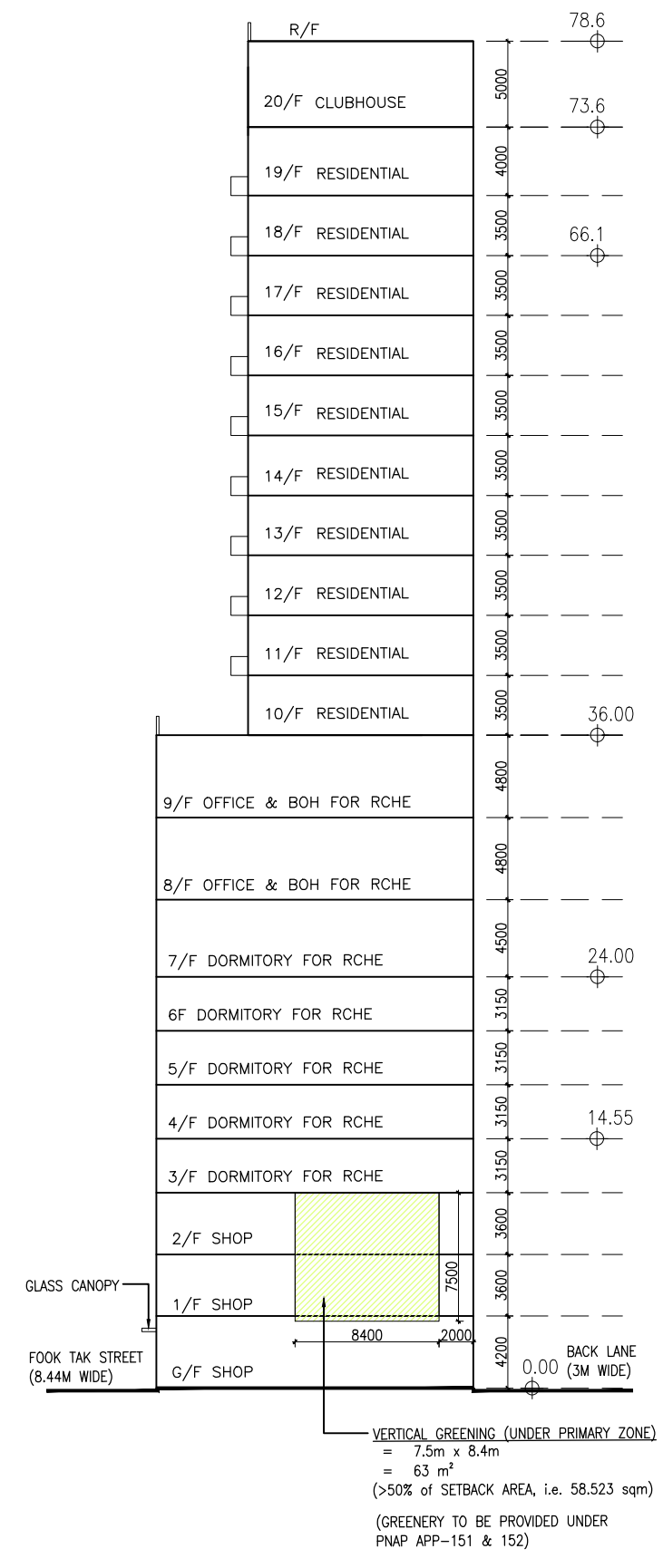
DESIGN REFERENCE PHOTOS



- This drawing and the contents are the copyright of I Consultants & Contracting Co. Ltd.
 - No part of the drawing and the design contained herein may be reproduced without the prior written consent of a director of I Consultants & Contracting Co. Ltd.
 - Do not take measurements directly from this drawing.
 - Check and verify all dimensions on site.
 - Read this drawing in conjunction with the specifications and all other related drawings.
 - Notify the Architect immediately of any discrepancy found herein.



**SCHEMATIC SECTION
(FACING FOOK TAK STREET)**



**SCHEMATIC ELEVATION
(FACING PAU CHEUNG SQUARE)**

Rev.	Date	Description
Project Name: Redevelopment of Yuen Long Theatre at Lot No. 3678 in D.D. 120, Yuen Long, N.T.		
Planning Consultant: DeSPACE (International) Limited		
Architect: I Consultants & Contracting Company Limited		
Traffic Consultant: CTA Consultants Limited		
Environmental Consultant: BeeXergy Consulting Limited		
Structural and Geotechnical Engineer: S. T. Wong & Partners Limited		
Drawing Title: SCHEMATIC SECTION AND ELEVATION		
Designed by:		JODY
Drawn by:		JODY
Checked by:		CAL.
Scale: 1 : 400	Paper:	A3
Drawing Number	Revision Letter	
GBP013		