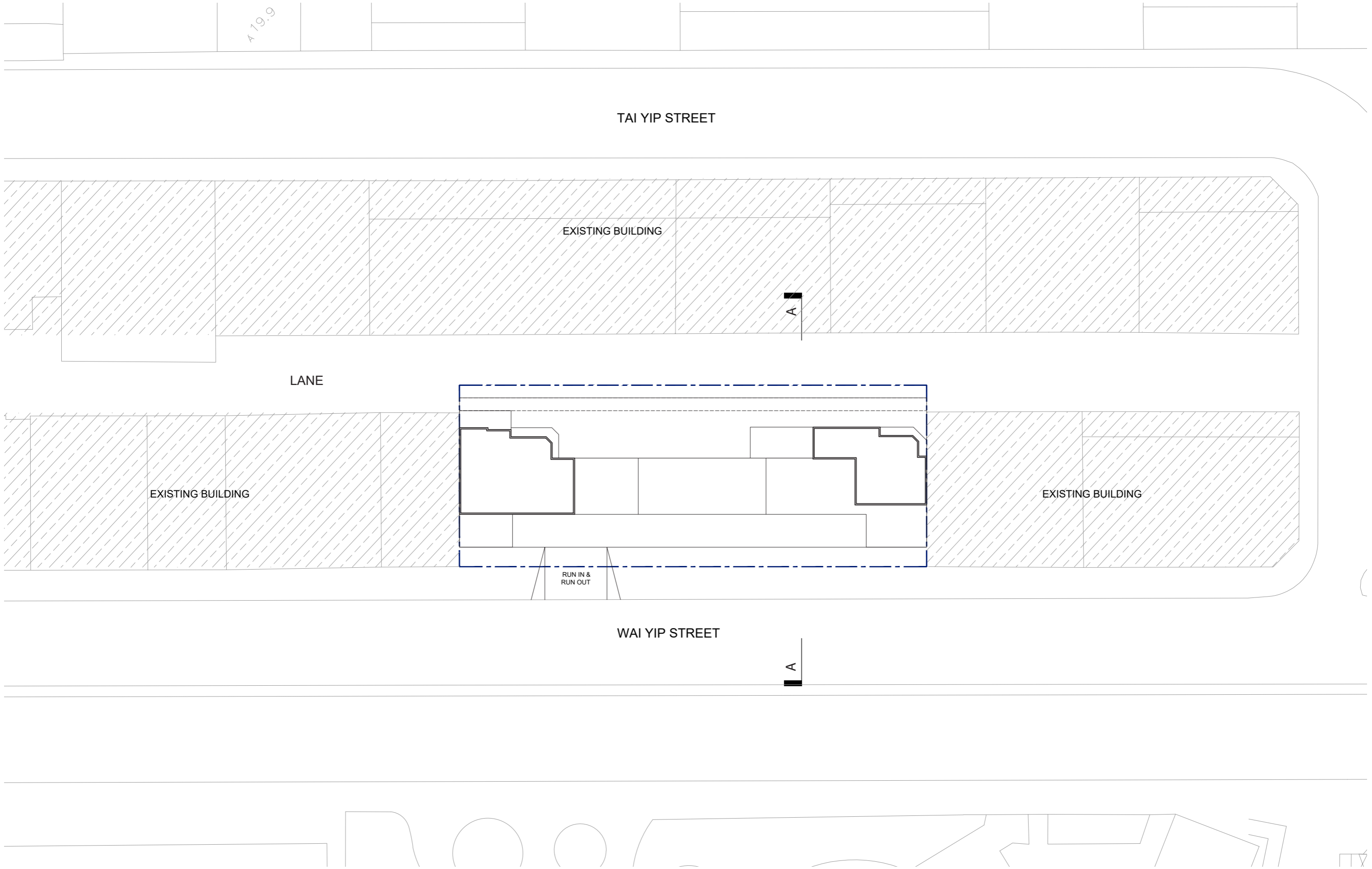


Proposed Rezoning of the Site from "OU(B)" to "OU(Residential Care Home for the Elderly and Hotel)" for a Proposed Composite Development with Residential Care Homes for the Elderly and Hotel at Nos. 107 – 109 Wai Yip Street, Kwun Tong
S12A Amendment of Plan Application

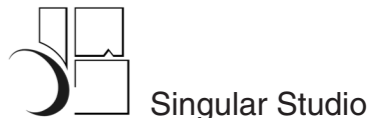
Appendix 1

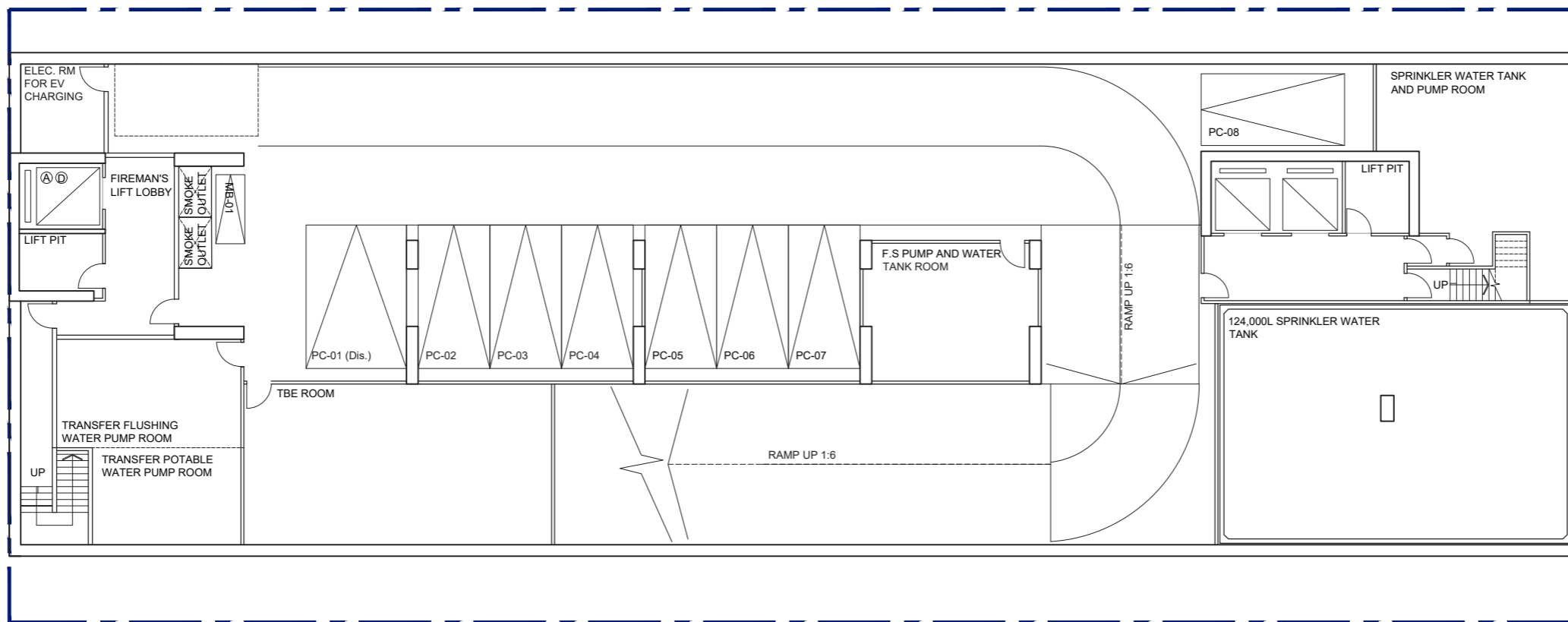
Indicative Development Scheme



BLOCK PLAN SK-1 19 MARCH 2024

PROPOSED HOTEL DEVELOPMENT AND SOCIAL WELFARE FACILITIES AT
107 - 109 WAI YIP STREET, KWUN TONG, KOWLOON

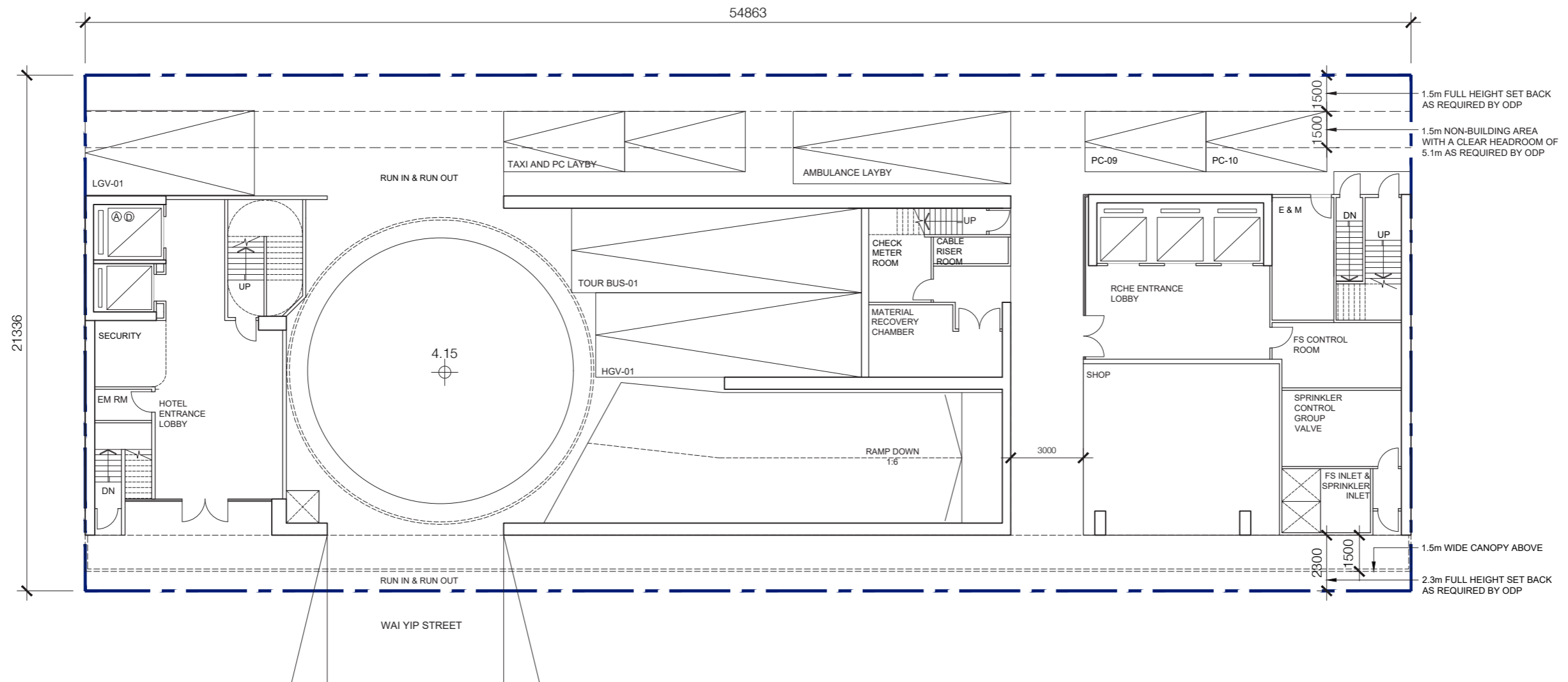




BASEMENT LEVEL 1 PLAN SK-2 24 APRIL 2024

PROPOSED HOTEL DEVELOPMENT AND SOCIAL WELFARE FACILITIES AT
107 - 109 WAI YIP STREET, KWUN TONG, KOWLOON

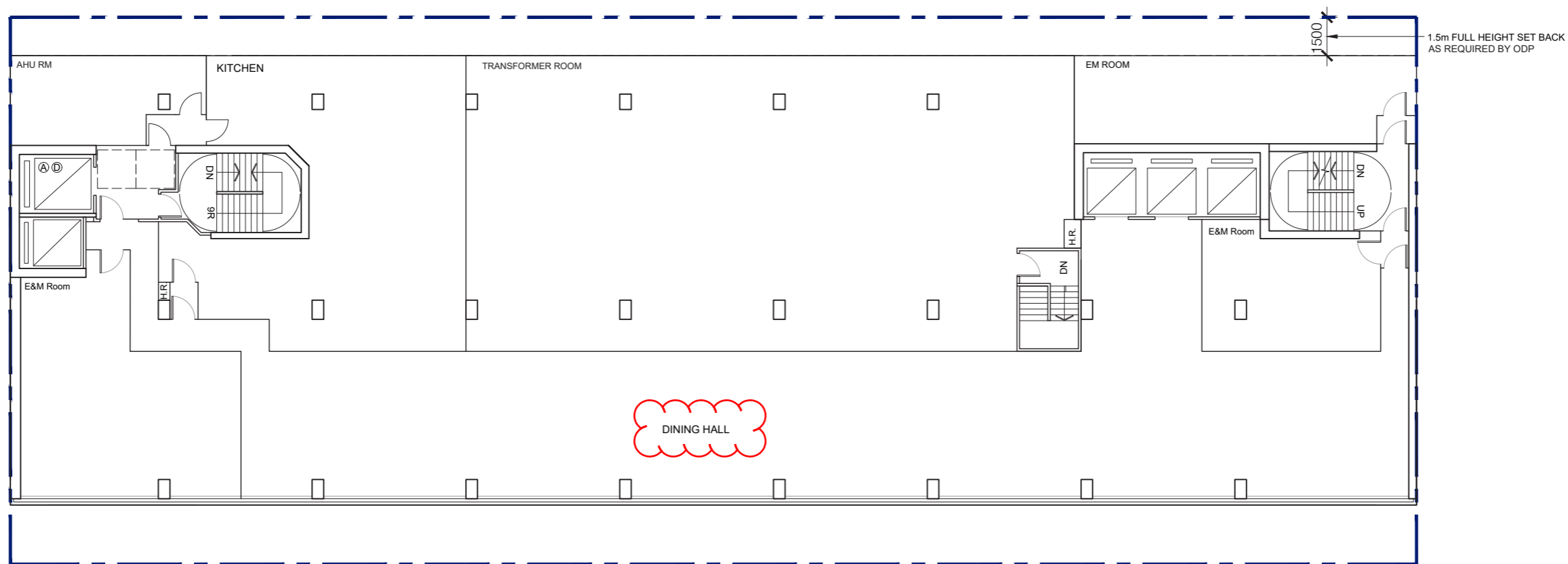




GROUND FLOOR PLAN SK-3 30 JULY 2024

PROPOSED HOTEL DEVELOPMENT AND SOCIAL WELFARE FACILITIES AT
107 - 109 WAI YIP STREET, KWUN TONG, KOWLOON

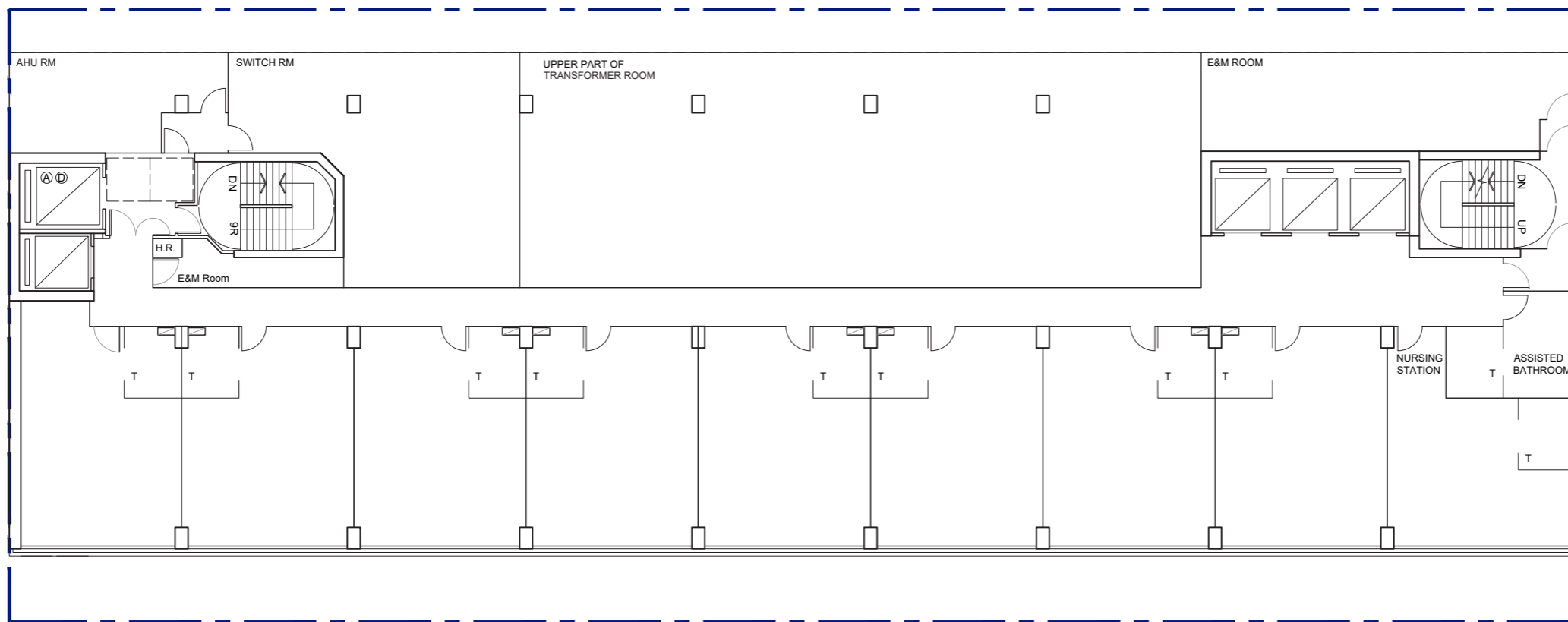




RCHE FIRST FLOOR PLAN SK-4 19 MARCH 2024

PROPOSED HOTEL DEVELOPMENT AND SOCIAL WELFARE FACILITIES AT
107 - 109 WAI YIP STREET, KWUN TONG, KOWLOON



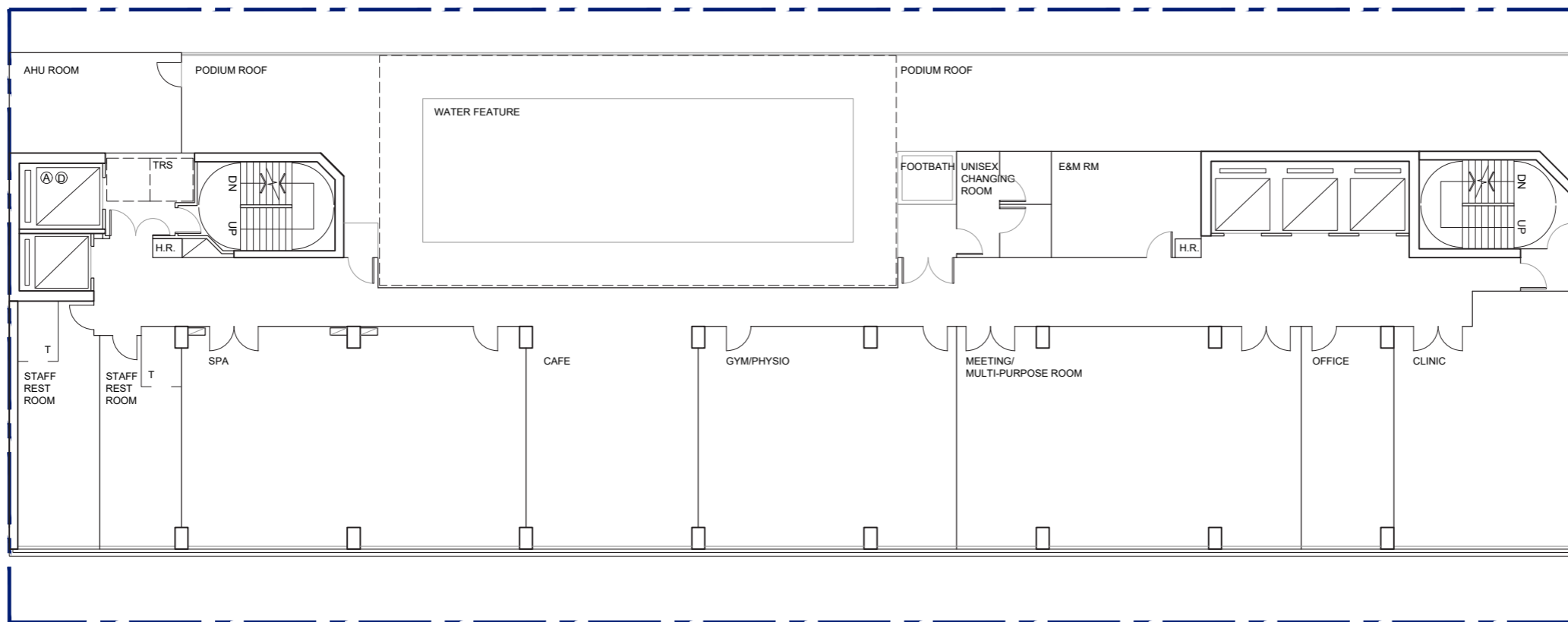


NO. OF RCHE ROOMS: 8

RCHE SECOND FLOOR PLAN SK-5 19 MARCH 2024

PROPOSED HOTEL DEVELOPMENT AND SOCIAL WELFARE FACILITIES AT
107 - 109 WAI YIP STREET, KWUN TONG, KOWLOON

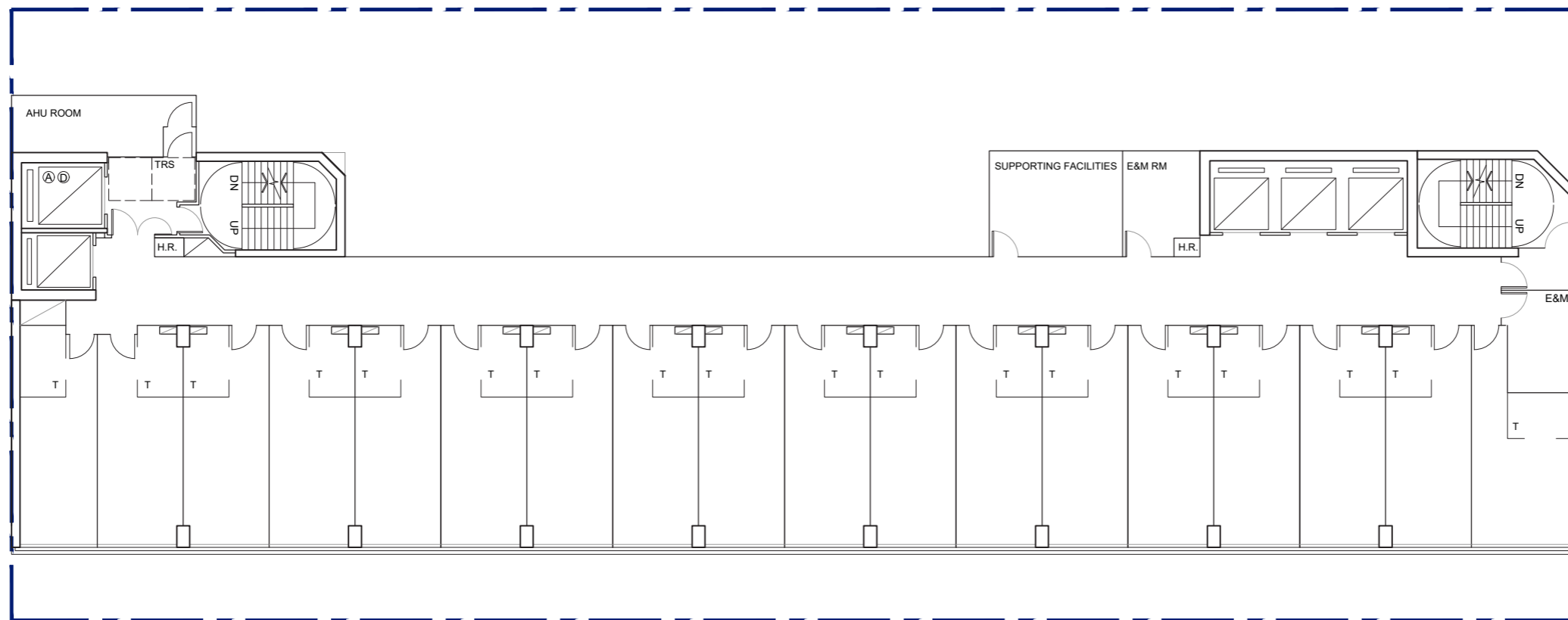




RCHE THIRD FLOOR PLAN SK-6 11 APRIL 2024

PROPOSED HOTEL DEVELOPMENT AND SOCIAL WELFARE FACILITIES AT
107 - 109 WAI YIP STREET, KWUN TONG, KOWLOON



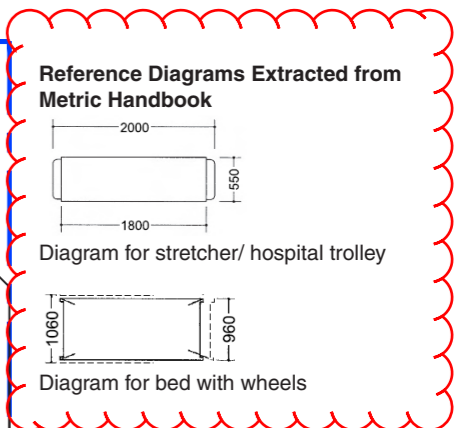
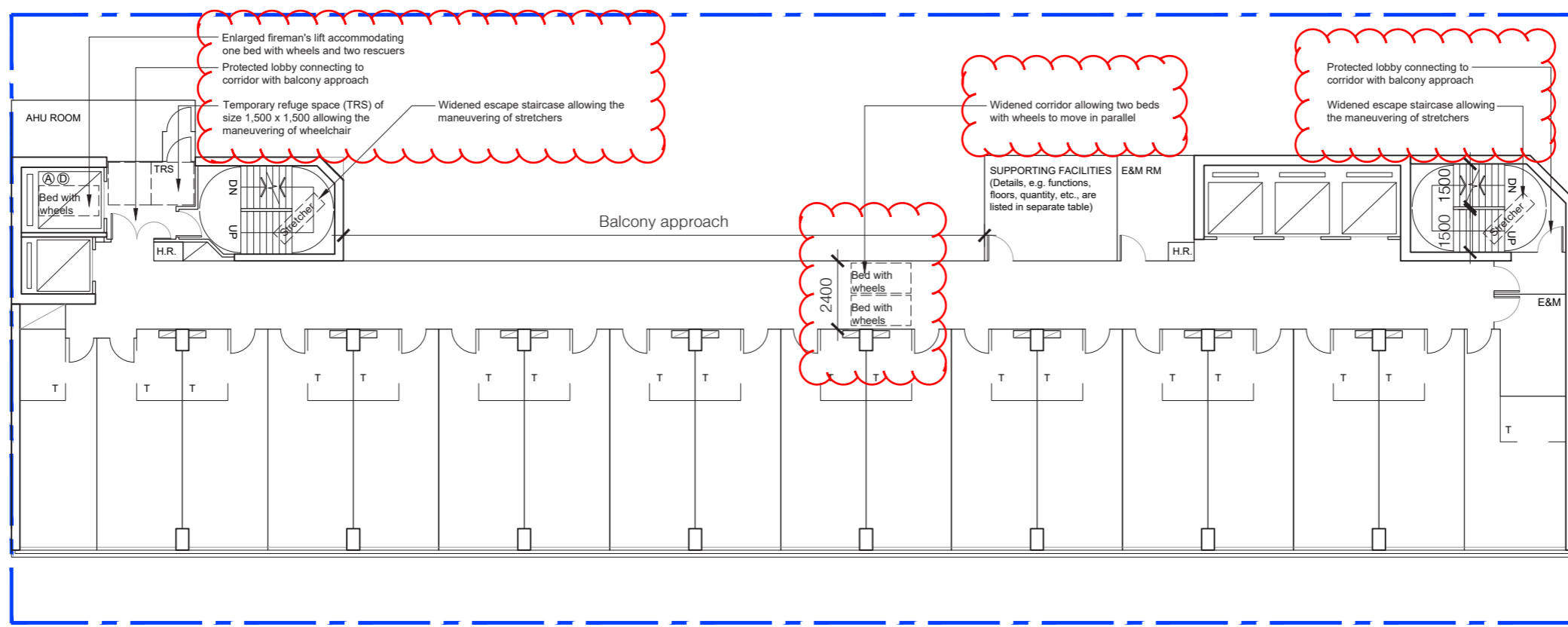


NO. OF RCHE ROOMS: 18

RCHE TYPICAL FLOOR (4-5, 7-12, 14-20/F) PLAN SK-7 19 MARCH 2024

PROPOSED HOTEL DEVELOPMENT AND SOCIAL WELFARE FACILITIES AT
107 - 109 WAI YIP STREET, KWUN TONG, KOWLOON





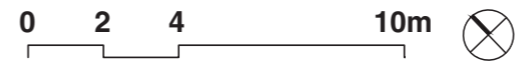
Proposed Function of Supporting Facilities at RCHE Typical Floor (4-5/F, 7-12/F and 14-20/F, 15 storeys)

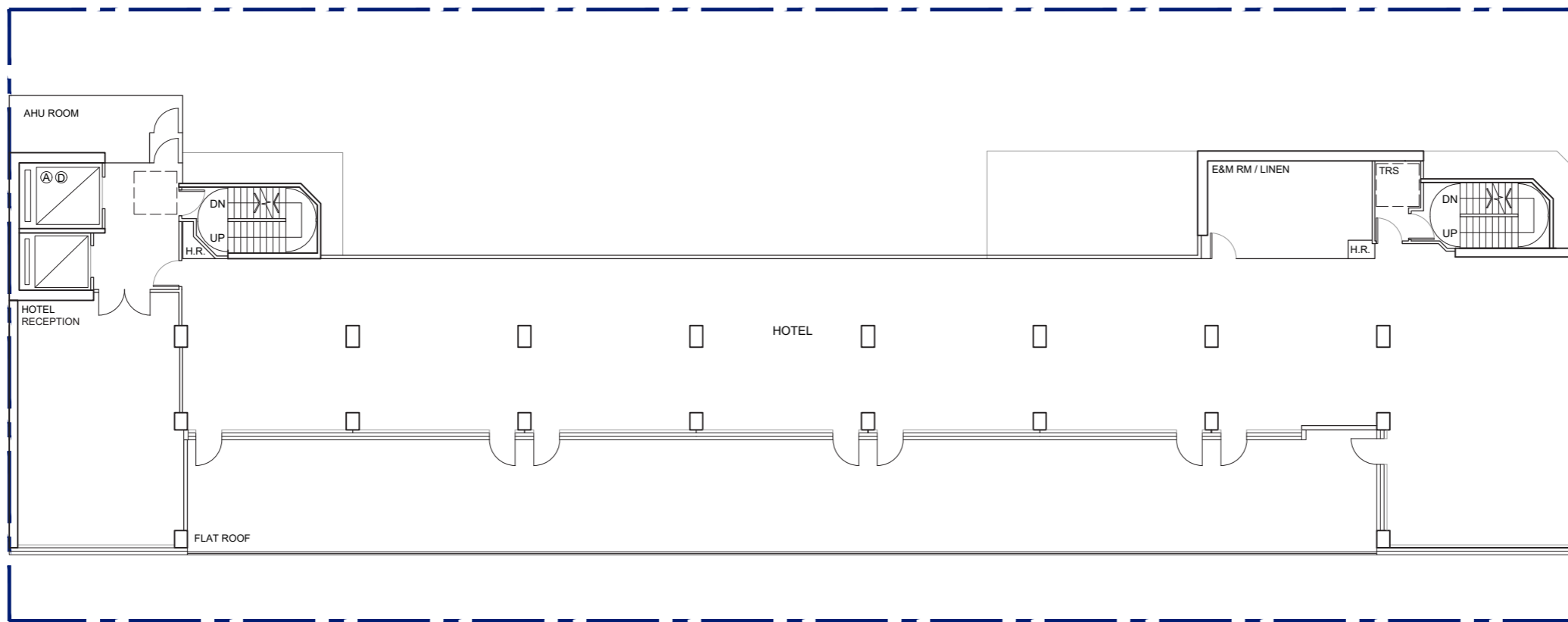
Function	No. of Rooms	Location
Nursing Station	3	9/F, 14/F, 18/F
Isolation Room	4	5/F, 8/F, 12/F, 17/F
Pantry	3	11/F, 16/F, 20/F
Laundry	2	4/F, 7/F
Store	3	10/F, 15/F, 19/F
Total	15	

NO. OF RCHE ROOMS : 18
 NO. OF BEDS : 18 - 35
 (1-2 BEDS PER ROOM)

RCHE TYPICAL FLOOR (4-5, 7-12, 14-20/F) PLAN SK-7B 5 NOVEMBER 2024
 (with annotations for additional requirements for building fire safety design)

PROPOSED HOTEL DEVELOPMENT AND SOCIAL WELFARE FACILITIES AT
 107 - 109 WAI YIP STREET, KWUN TONG, KOWLOON



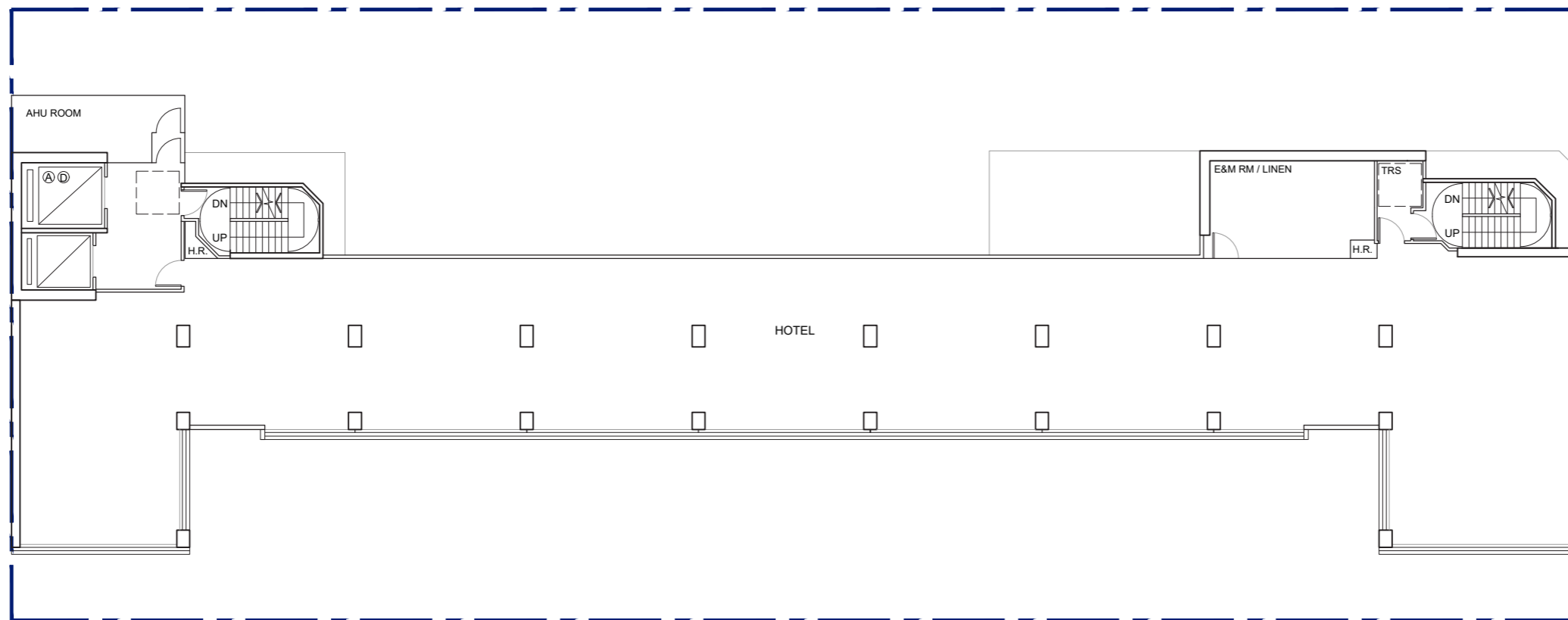


NO. OF GUESTROOMS: 16

HOTEL 21/F FLOOR PLAN SK-8 3 MAY 2024

PROPOSED HOTEL DEVELOPMENT AND SOCIAL WELFARE FACILITIES AT
107 - 109 WAI YIP STREET, KWUN TONG, KOWLOON



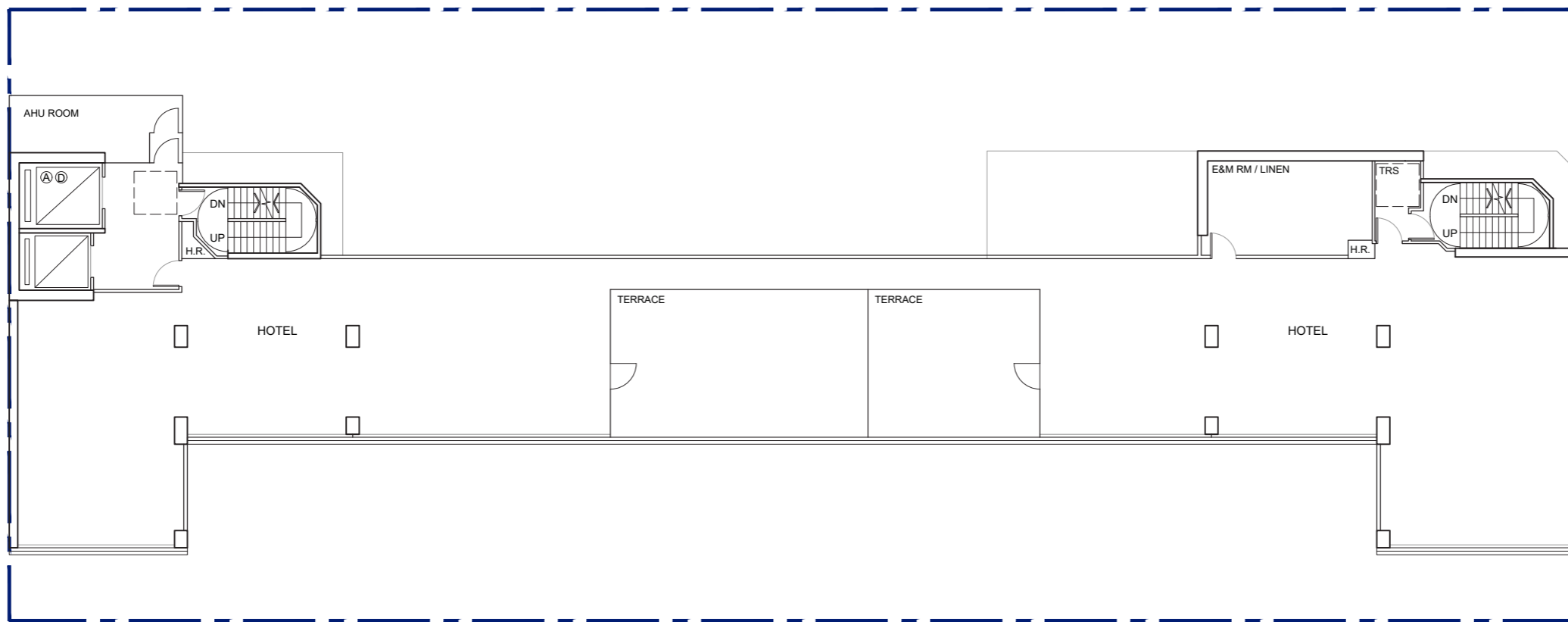


NO. OF GUESTROOMS PER TYPICAL FLOOR: 19
 19 x 9 TYPICAL FLOORS = 171 GUESTROOMS

HOTEL TYPICAL FLOOR PLAN SK-9 3 MAY 2024

PROPOSED HOTEL DEVELOPMENT AND SOCIAL WELFARE FACILITIES AT
 107 - 109 WAI YIP STREET, KWUN TONG, KOWLOON



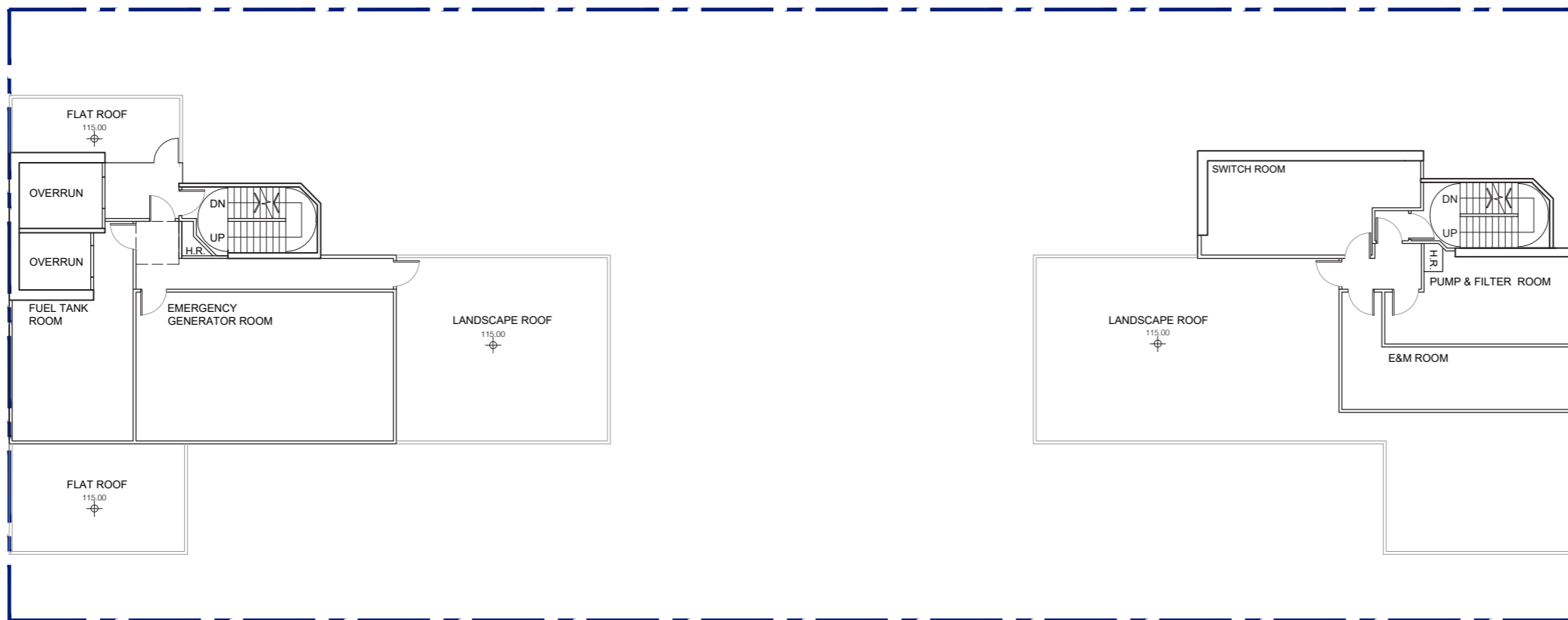


NO. OF GUESTROOMS: 13

HOTEL 31F FLOOR PLAN SK-10 3 MAY 2024

PROPOSED HOTEL DEVELOPMENT AND SOCIAL WELFARE FACILITIES AT
107 - 109 WAI YIP STREET, KWUN TONG, KOWLOON

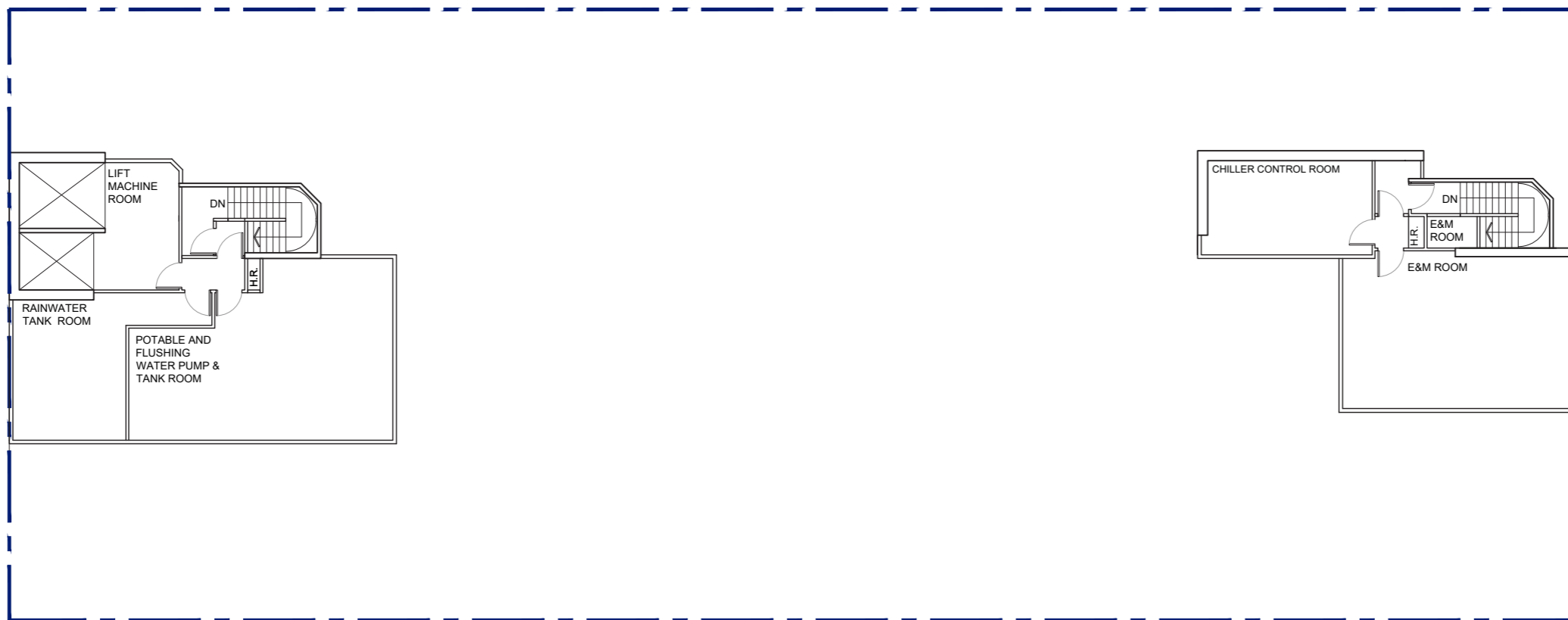




ROOF FLOOR PLAN SK-11 30 JULY 2024

PROPOSED HOTEL DEVELOPMENT AND SOCIAL WELFARE FACILITIES AT
107 - 109 WAI YIP STREET, KWUN TONG, KOWLOON

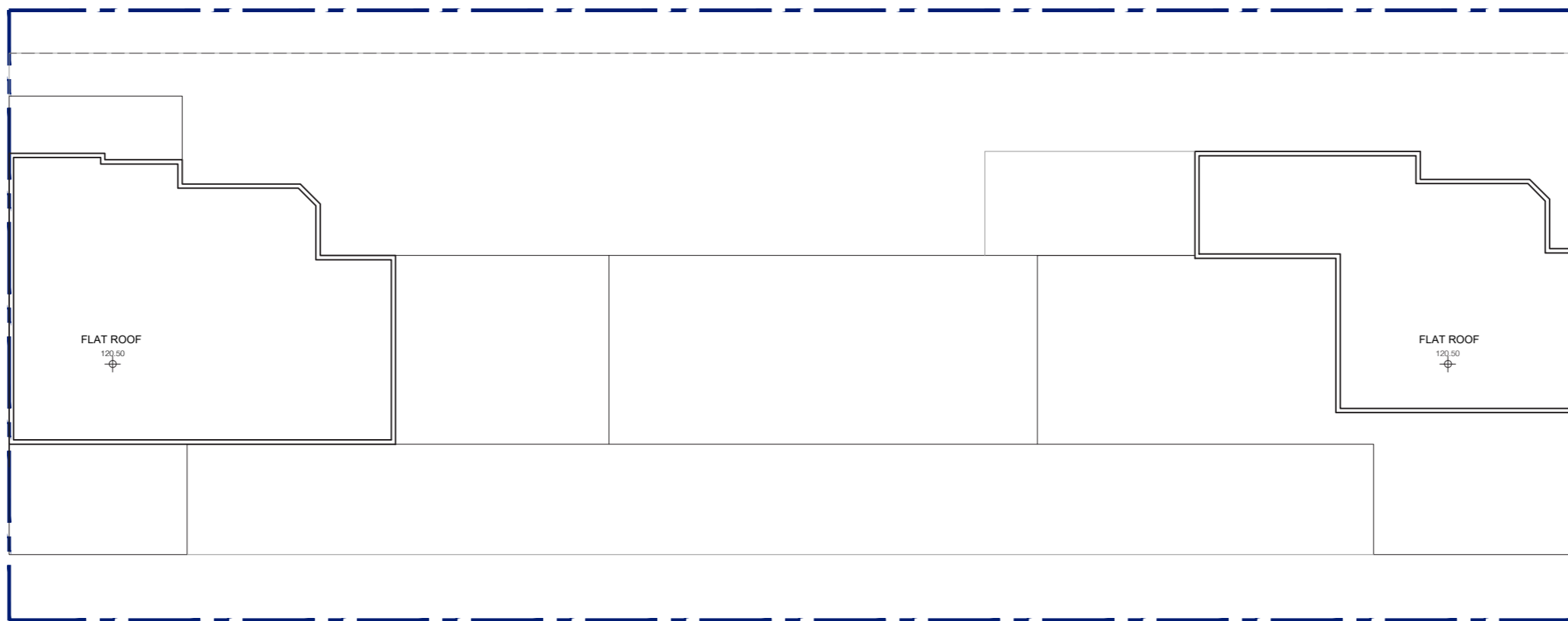




MECHANIC FLOOR PLAN SK-12 19 MARCH 2024

PROPOSED HOTEL DEVELOPMENT AND SOCIAL WELFARE FACILITIES AT
107 - 109 WAI YIP STREET, KWUN TONG, KOWLOON

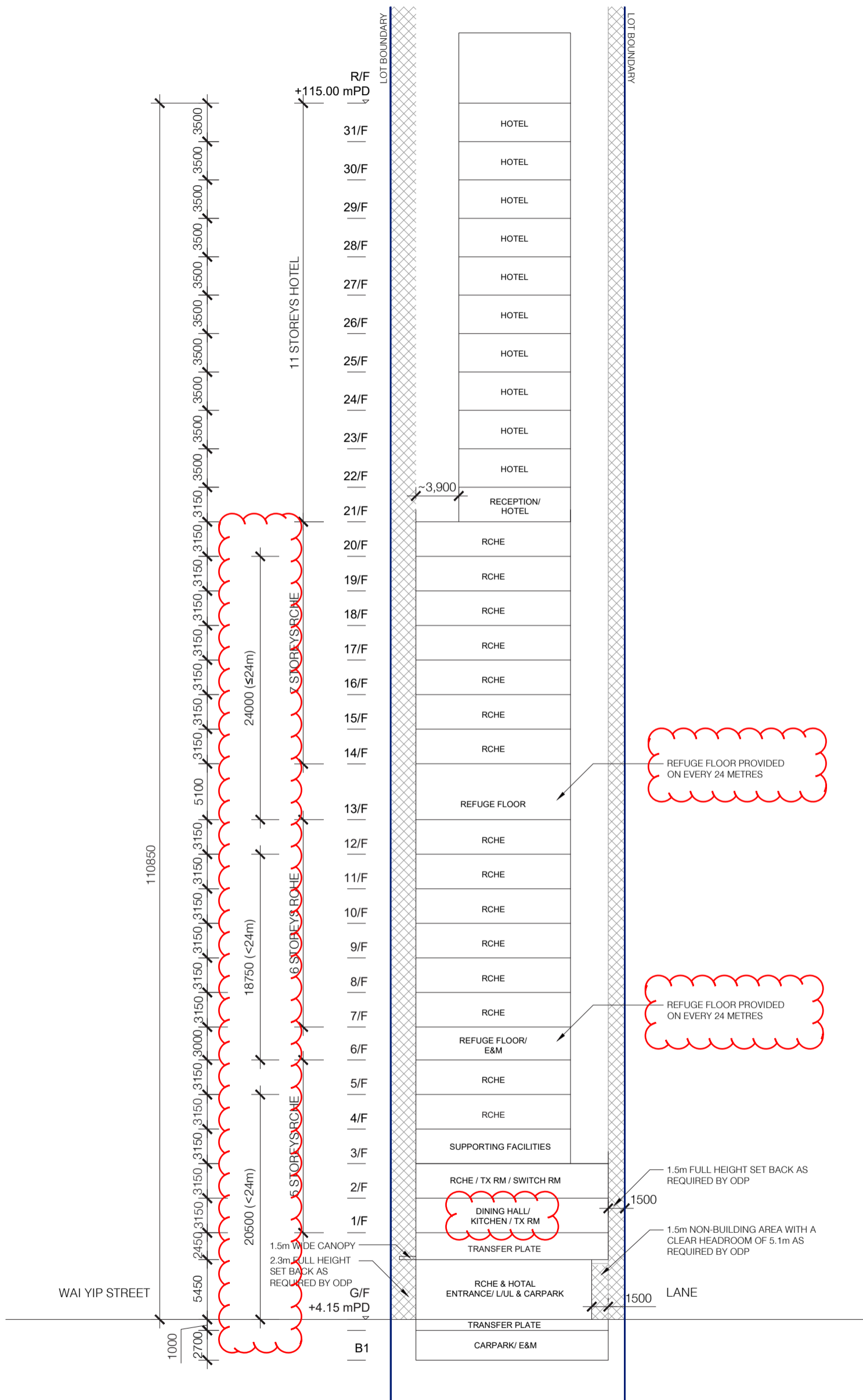




UPPER ROOF FLOOR PLAN SK-13 30 JULY 2024

PROPOSED HOTEL DEVELOPMENT AND SOCIAL WELFARE FACILITIES AT
107 - 109 WAI YIP STREET, KWUN TONG, KOWLOON

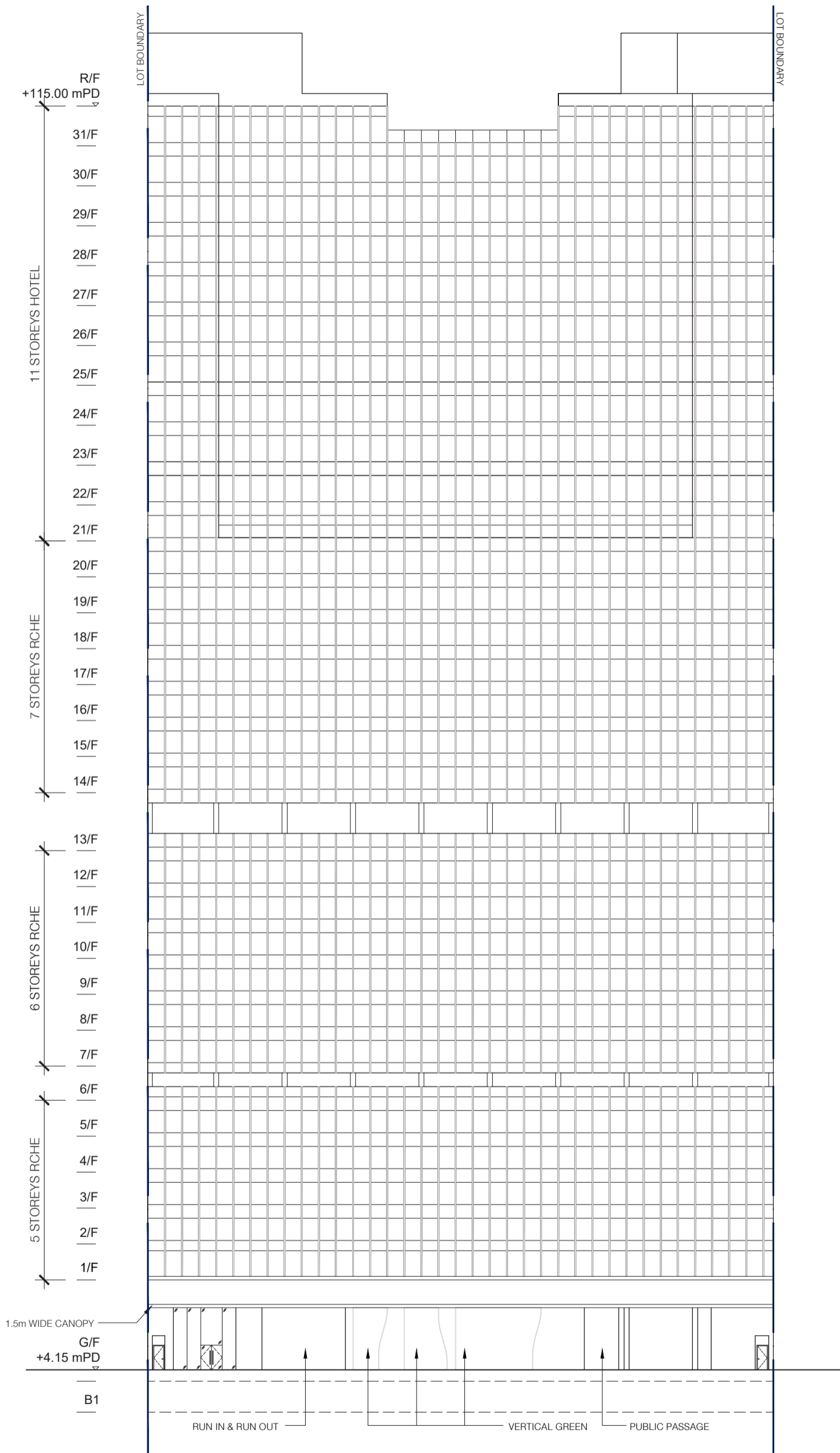




SECTION A SK-14 13 NOVEMBER 2024

PROPOSED HOTEL DEVELOPMENT AND SOCIAL WELFARE FACILITIES AT 107 - 109 WAI YIP STREET, KWUN TONG, KOWLOON





SOUTH-WEST ELEVATION SK-15 24 APRIL 2024

PROPOSED HOTEL DEVELOPMENT AND SOCIAL WELFARE FACILITIES AT
107 - 109 WAI YIP STREET, KWUN TONG, KOWLOON

