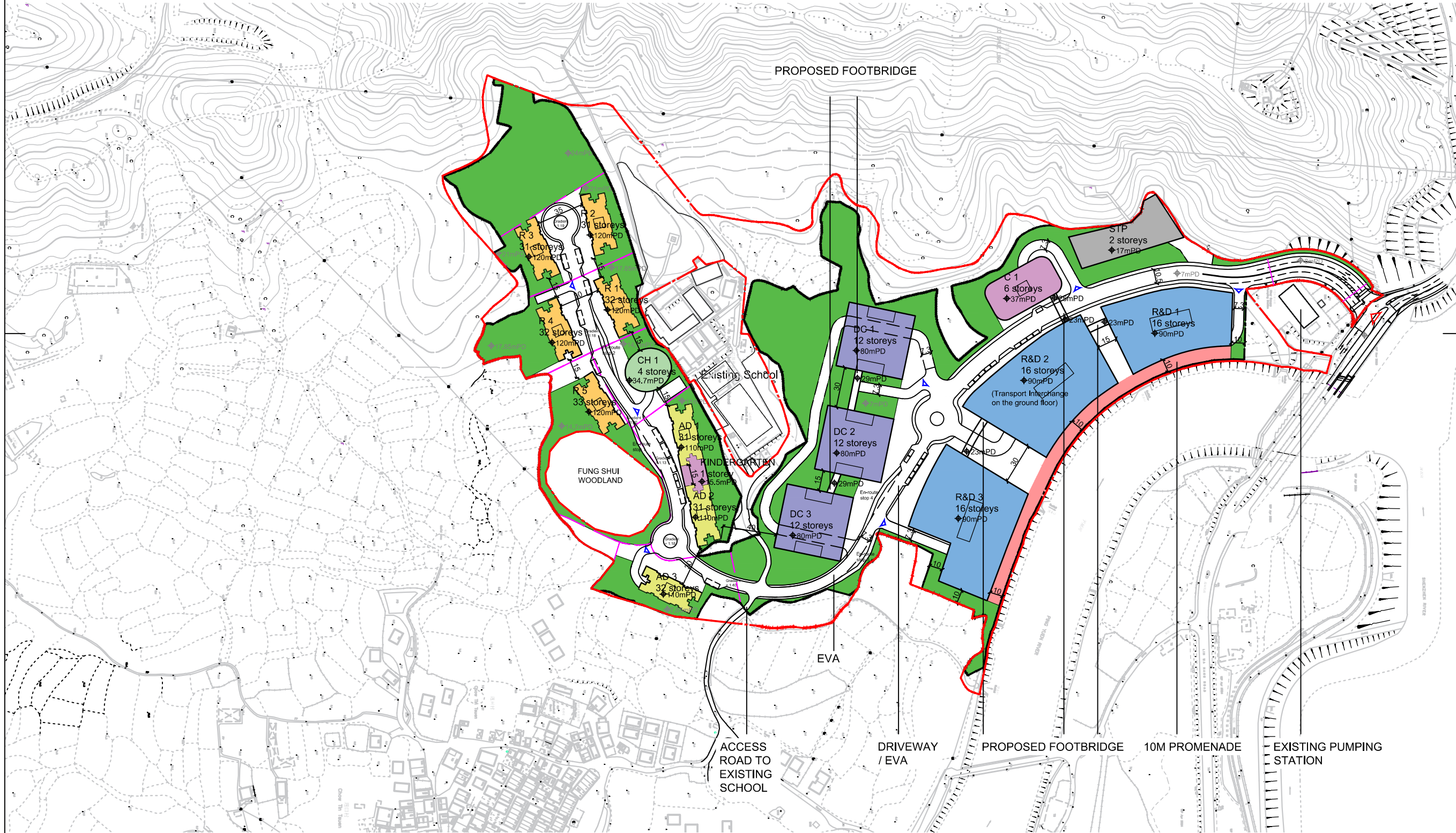
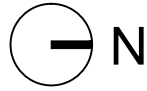


Appendix A

Revised Indicative Architectural Drawings

LEGEND

- - - - APPLICATION SITE BOUNDARY
- - - - DEVELOPMENT SITE BOUNDARY
- - - - SITE FORMATION LEVEL
- ▷ SITE RUN-IN/OUT
- ▷ ACCESS TO BASEMENT CARPARK
- R&D CENTRE
- DATA CENTRE
- RESIDENTIAL
- COMMERCIAL
- ANCILLARY DORMITORIES
- CLUBHOUSE
- LANDSCAPE AREA
- SEWAGE TREATMENT PLANT
- PROMENADE



Rev.	Date	Description

Notes
 1. Do not scale drawings. Dimensions govern.
 2. Verify dimensions in field. Notify WCWP of discrepancies.
 3. Dimensions in mm unless otherwise noted.
 4. Not for construction unless expressly certified.



Client
Hong Kong International Innovation Tech Hub

Consultants

Issue
Planning Application

RD Ref: RD 2/9188/10 (PT. II)
 FSD Ref: FP 8/9584/VII <131>

Authorized Person

Project
The Nexus

Project Number 20027	Date 20240613
--------------------------------	-------------------------

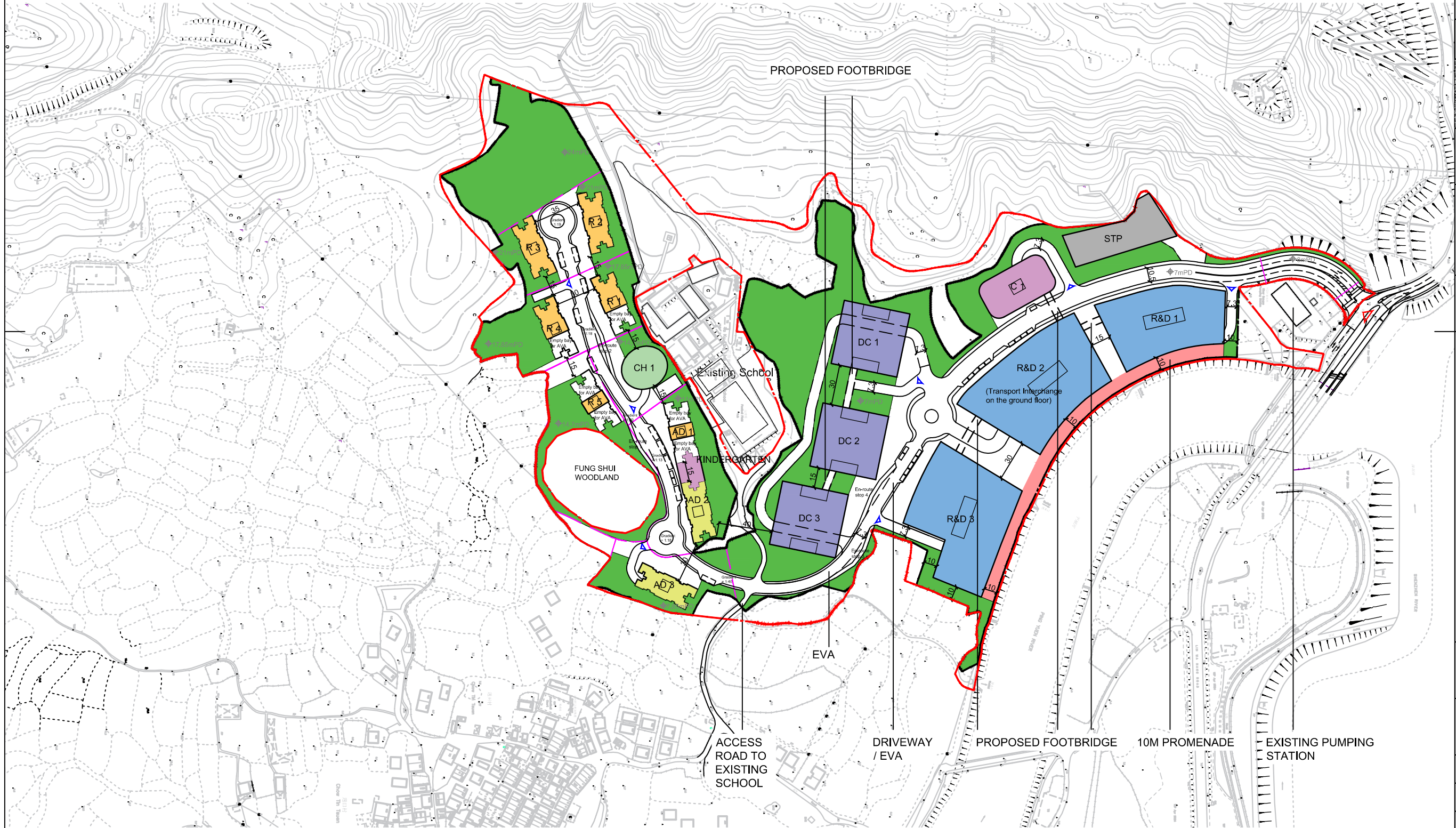
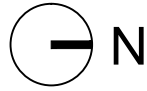
Scale 1:3000 at A3	Drawn/Approved CL/TL
------------------------------	--------------------------------

Title
Master Layout Plan

Number MLP-001	Revision -
--------------------------	----------------------

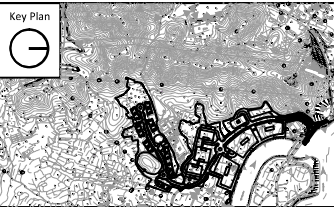
LEGEND

- - - - APPLICATION SITE BOUNDARY
- - - - DEVELOPMENT SITE BOUNDARY
- - - - SITE FORMATION LEVEL
- ▷ SITE RUN-IN/OUT
- ▷ ACCESS TO BASEMENT CARPARK
- R&D CENTRE
- DATA CENTRE
- RESIDENTIAL
- COMMERCIAL
- ANCILLARY DORMITORIES
- CLUBHOUSE
- LANDSCAPE AREA
- SEWAGE TREATMENT PLANT
- PROMENADE



Rev.	Date	Description

- Notes**
- Do not scale drawings. Dimensions govern.
 - Verify dimensions in field. Notify WCWP of discrepancies.
 - Dimensions in mm unless otherwise noted.
 - Not for construction unless expressly certified.



Client
Hong Kong International Innovation Tech Hub

Consultants

Issue
Planning Application

RD Ref: RD 2/9188/10 (PT. II)
FSD Ref: FP 8/9584/VII <131>

Authorized Person

Project
The Nexus

Project Number 20027	Date 20240613
--------------------------------	-------------------------

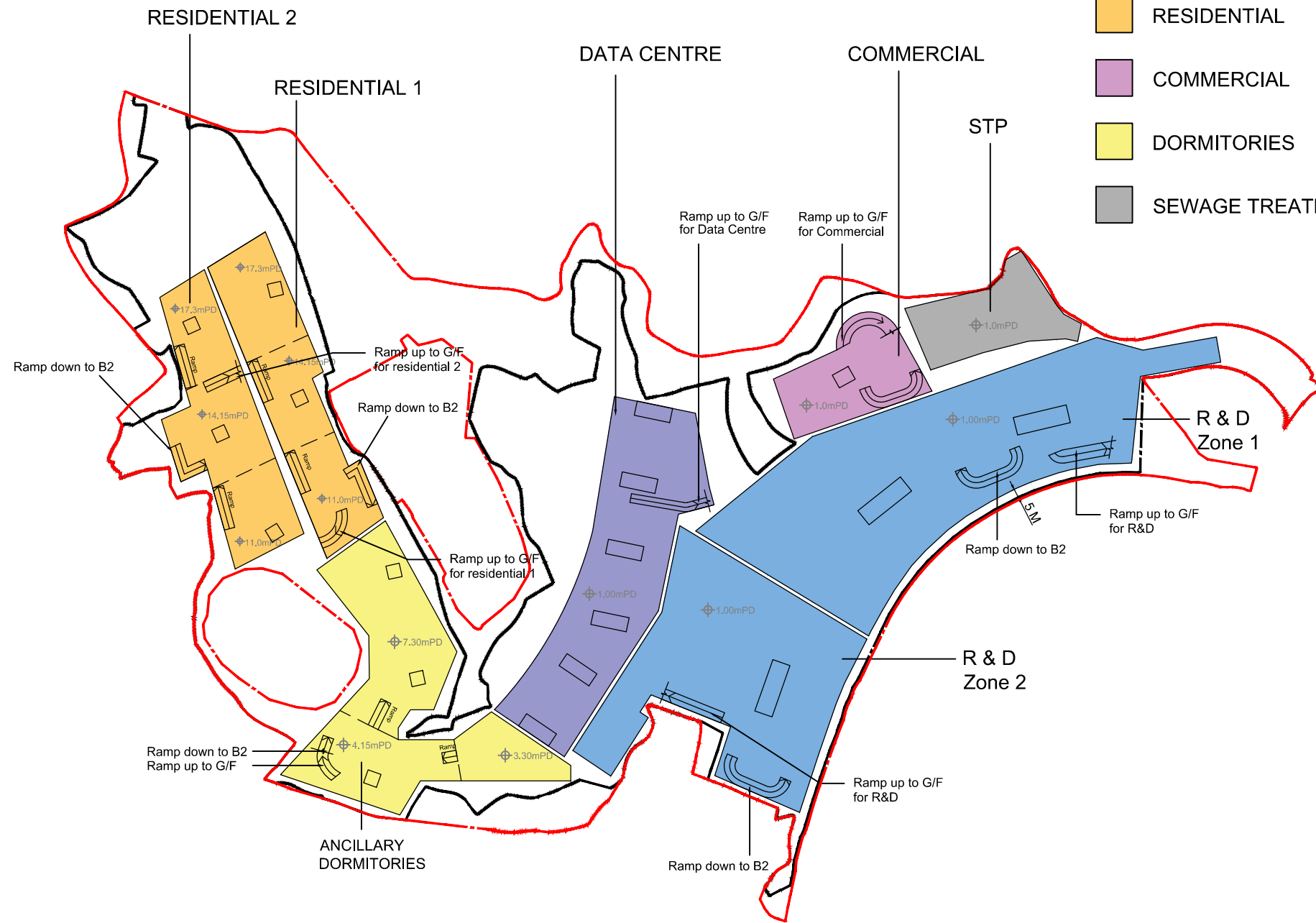
Scale 1:3000 at A3	Drawn/Approved CL/TL
------------------------------	--------------------------------

Title
Ground Floor Plan

Number	Revision
GF	-

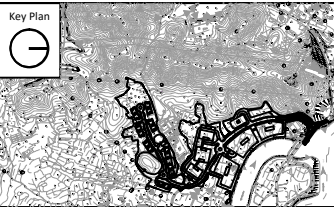
LEGEND

- - - - APPLICATION SITE BOUNDARY
- - - - DEVELOPMENT SITE BOUNDARY
- R&D CENTRE
- DATA CENTRE
- RESIDENTIAL
- COMMERCIAL
- DORMITORIES
- SEWAGE TREATMENT PLANT



Rev.	Date	Description
------	------	-------------

- Notes**
- Do not scale drawings. Dimensions govern.
 - Verify dimensions in field. Notify WCWP of discrepancies.
 - Dimensions in mm unless otherwise noted.
 - Not for construction unless expressly certified.



Client
Hong Kong International Innovation Tech Hub

Consultants

Issue
Planning Application

BD Ref: RD 2/9188/10 (PT. II)
FSD Ref: FP 8/9584/VII <131>

Authorized Person

Project
The Nexus

Project Number 20027	Date 20230629
--------------------------------	-------------------------

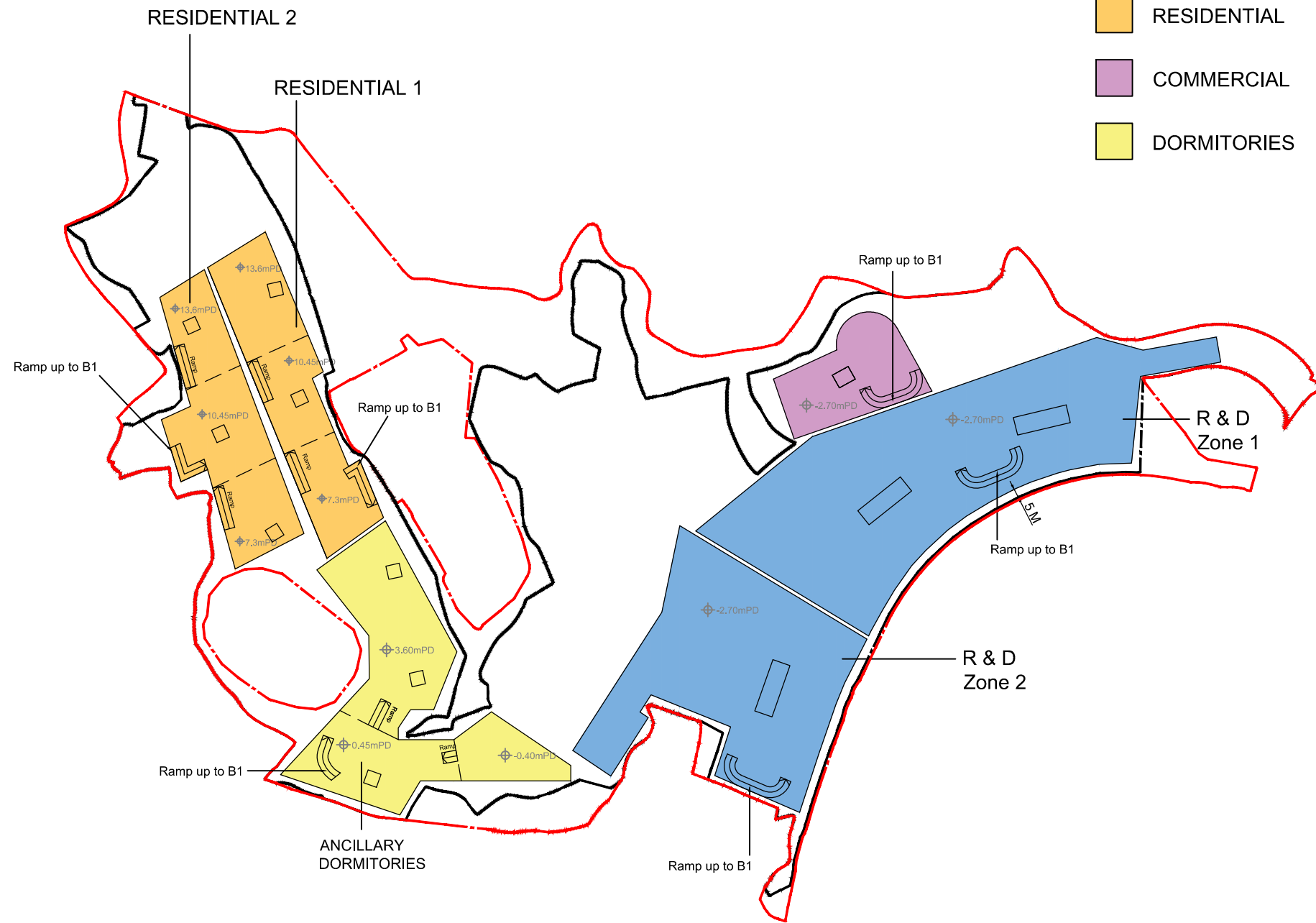
Scale 1:3000 at A3	Drawn/Approved CL/TL
------------------------------	--------------------------------

Title
B1 Basement Level

Number	Revision
B1-003	-

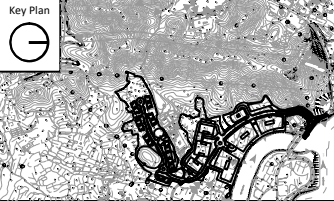
LEGEND

- - - - - APPLICATION SITE BOUNDARY
- - - - - DEVELOPMENT SITE BOUNDARY
- R&D CENTRE
- DATA CENTRE
- RESIDENTIAL
- COMMERCIAL
- DORMITORIES



Rev.	Date	Description
------	------	-------------

- Notes**
- Do not scale drawings. Dimensions govern.
 - Verify dimensions in field. Notify WCWP of discrepancies.
 - Dimensions in mm unless otherwise noted.
 - Not for construction unless expressly certified.



Client
Hong Kong International Innovation Tech Hub

Consultants

Issue
Planning Application

RD Ref: RD 2/9188/10 (PT. II)
FSD Ref: FP 8/9584/VII <131>

Authorized Person

Project
The Nexus

Project Number 20027	Date 20230629
--------------------------------	-------------------------

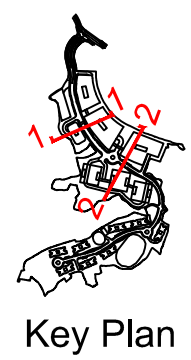
Scale 1:3000 at A3	Drawn/Approved CL/TL
------------------------------	--------------------------------

Title
B2 Basement Level

Number B2-004	Revision -
-------------------------	----------------------

LEGEND

- R&D CENTRE
- DATA CENTRE
- ANCILLARY DORMITORY
- RESIDENTIAL
- COMMERCIAL
- CLUBHOUSE
- SEWAGE TREATMENT PLANT
- TRANSPORT INTERCHANGE



Rev.	Date	Description
Notes		
1. Do not scale drawings. Dimensions govern.		
2. Verify dimensions in field. Notify WCWP of discrepancies.		
3. Dimensions in mm unless otherwise noted.		
4. Not for construction unless expressly certified.		



Client
Hong Kong International Innovation Tech Hub

Consultants

Issue
Planning Application

RD Ref: RD 2/9188/10 (PT. II)
FSD Ref: FP 8/9584/VII <131>

Authorized Person

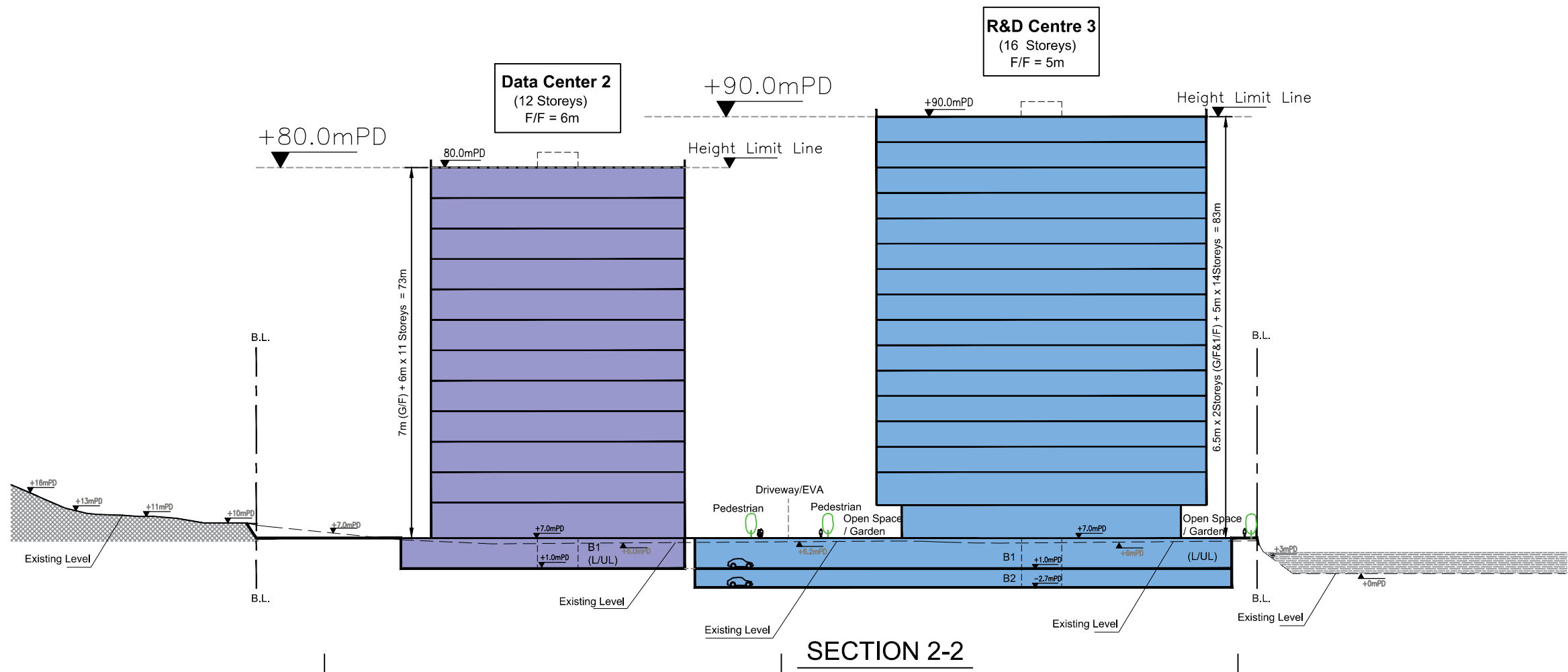
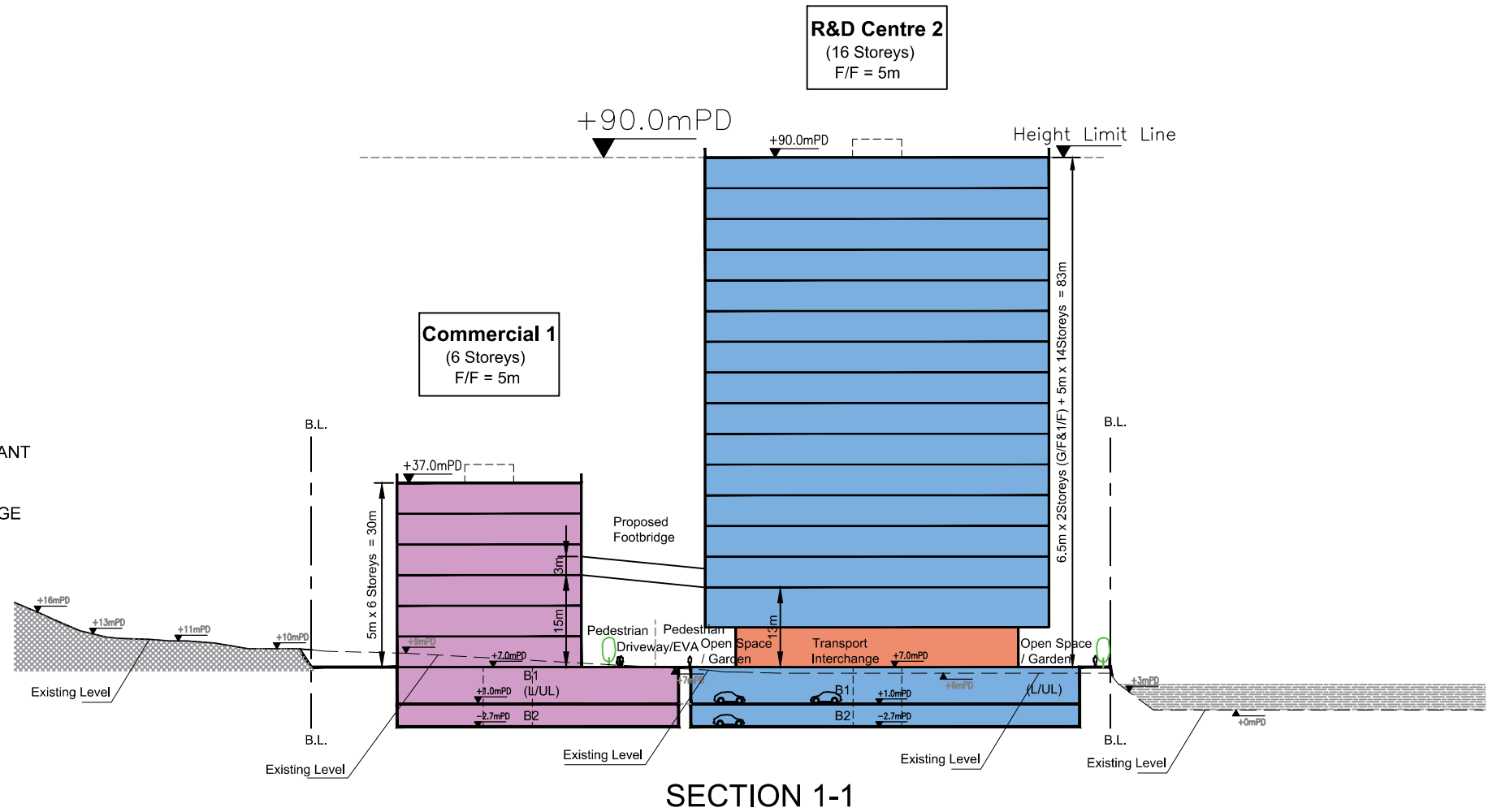
Project
The Nexus

Project Number Date
20027 **20240612**

Scale Drawn/Approved
1:1000 at A3 **CL/TL**

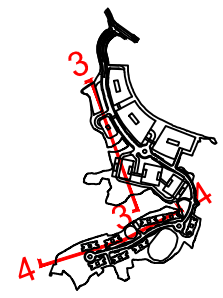
Title
Section 1-1, 2-2

Number	Revision
S-005	-



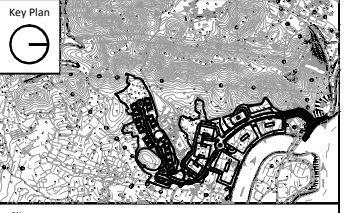
LEGEND

- R&D CENTRE
- DATA CENTRE
- ANCILLARY DORMITORY
- RESIDENTIAL
- COMMERCIAL
- CLUBHOUSE
- SEWAGE TREATMENT PLANT
- TRANSPORT INTERCHANGE



Key Plan

Rev.	Date	Description
Notes		
1.		Do not scale drawings. Dimensions govern.
2.		Verify dimensions in field. Notify WCWP of discrepancies.
3.		Dimensions in mm unless otherwise noted.
4.		Not for construction unless expressly certified.



Client
Hong Kong International Innovation Tech Hub

Consultants

Issue
Planning Application

BD Ref: BD 2/9188/10 (PT. II)
FSD Ref: FP 8/9584/VII <131>

Authorized Person

Project
The Nexus

Project Number
20027

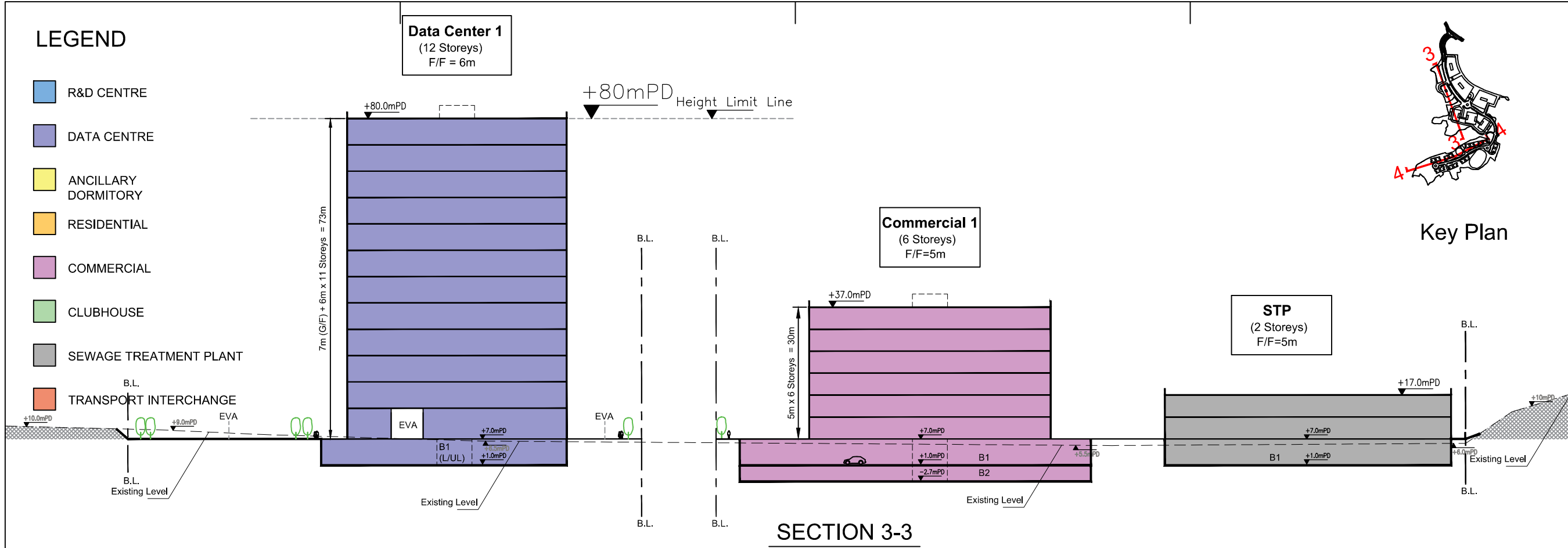
Date
20230629

Scale
1:1000 at A3

Drawn/Approved
CL/TL

Title
Section 3-3, 4-4

Number	Revision
S-006	-



SECTION 3-3



SECTION 4-4