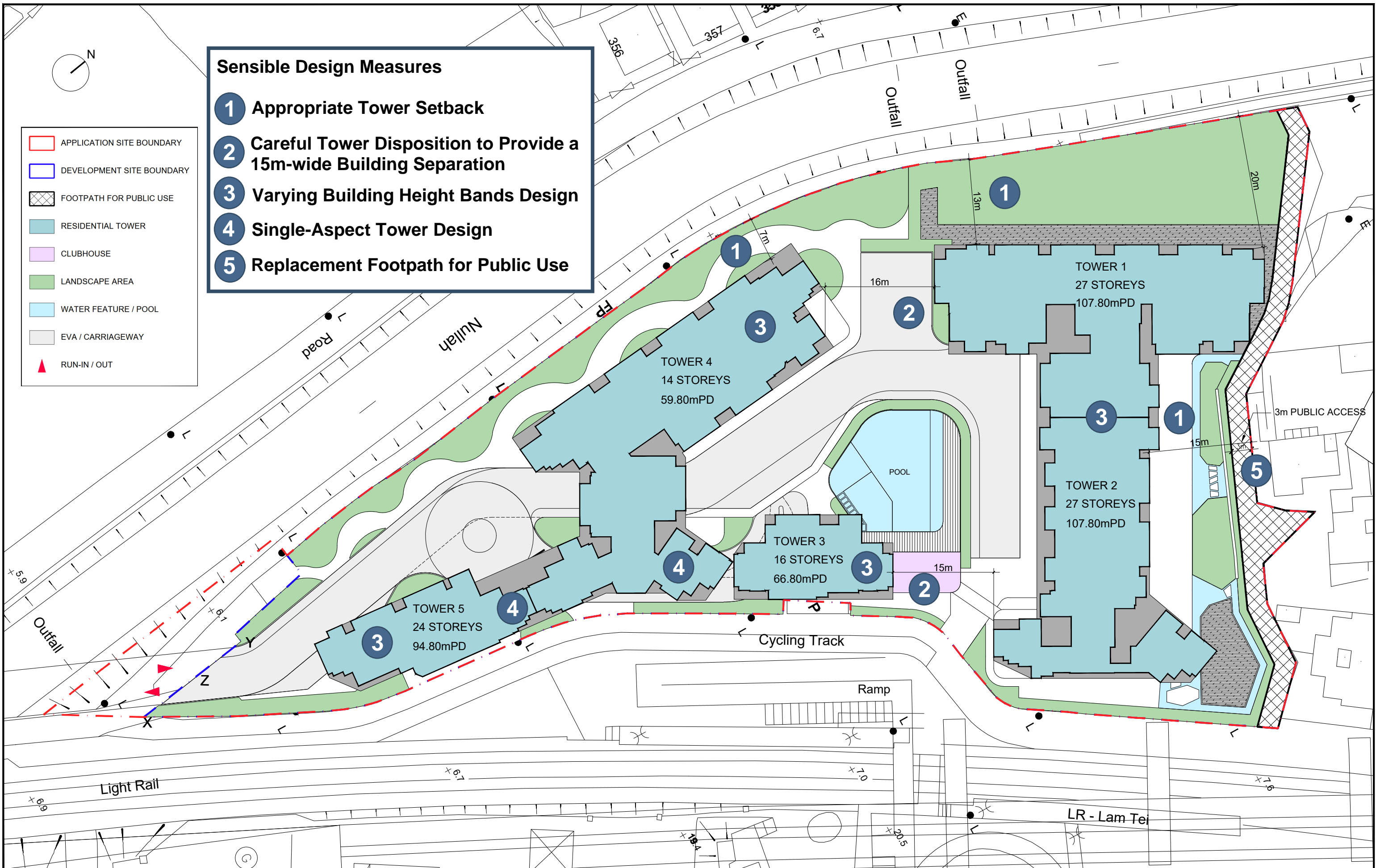


Annex D

Revised Master Layout Plan

- ### Sensible Design Measures
- 1 Appropriate Tower Setback
 - 2 Careful Tower Disposition to Provide a 15m-wide Building Separation
 - 3 Varying Building Height Bands Design
 - 4 Single-Aspect Tower Design
 - 5 Replacement Footpath for Public Use

- APPLICATION SITE BOUNDARY
- DEVELOPMENT SITE BOUNDARY
- FOOTPATH FOR PUBLIC USE
- RESIDENTIAL TOWER
- CLUBHOUSE
- LANDSCAPE AREA
- WATER FEATURE / POOL
- EVA / CARRIAGEWAY
- ▲ RUN-IN / OUT



Proposed Rezoning from "Residential (Group B)1" Zone to "Residential (Group B)4" Zone for Medium-Density Housing Development to Include a Footpath for Public Use at Various Lots and Adjacent Government Land in DD130, Lam Tei, Tuen Mun