

Annex B

Updated Architectural Drawings

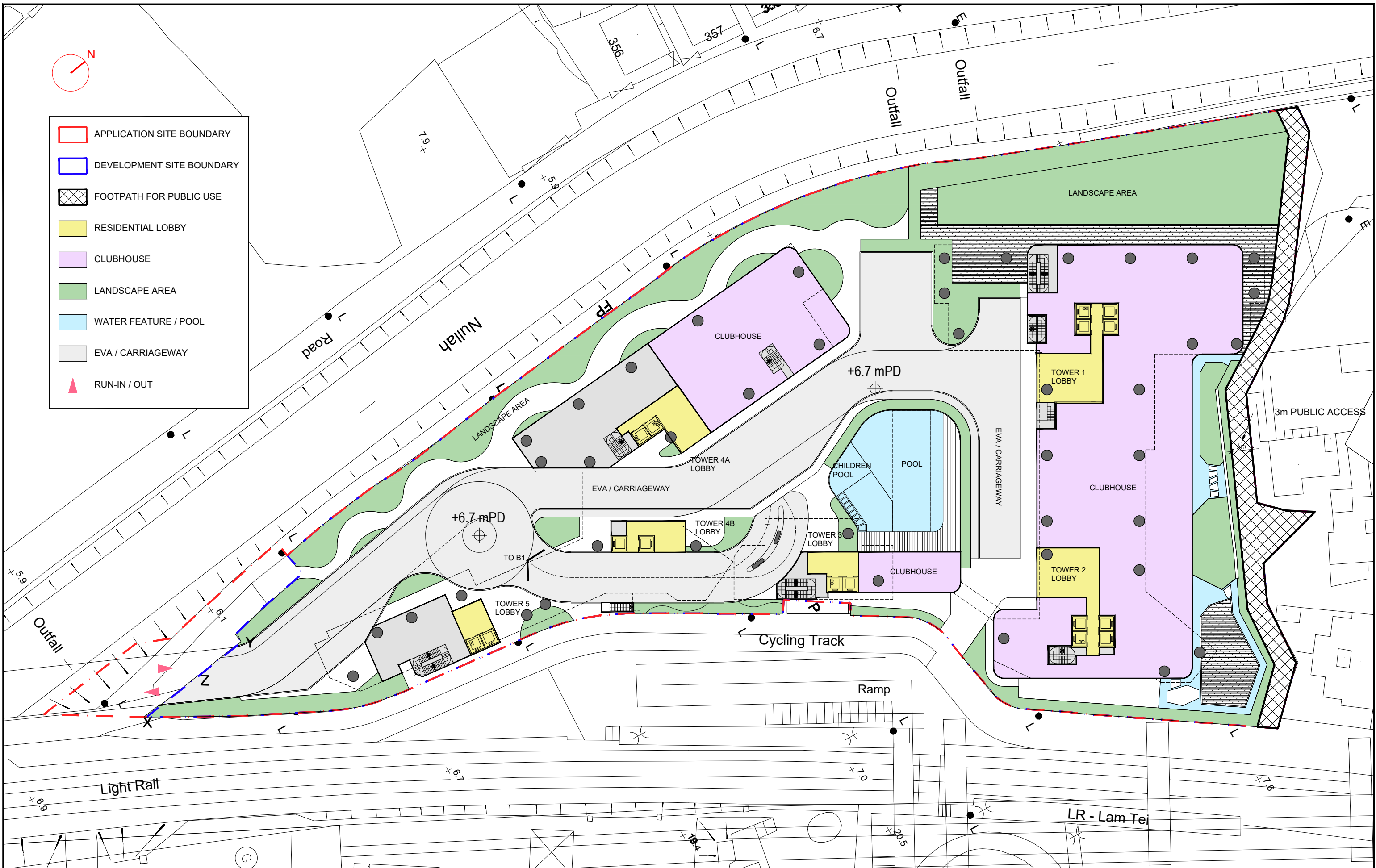


Proposed Rezoning from "Residential (Group B)1" Zone to "Residential (Group B)4" Zone for Medium-Density Housing Development to Include a Footpath for Public Use at Various Lots and Adjacent Government Land in DD130, Lam Tei, Tuen Mun

09-07-2024
1:500 (A3)

MLP

LWK
+PARTNERS

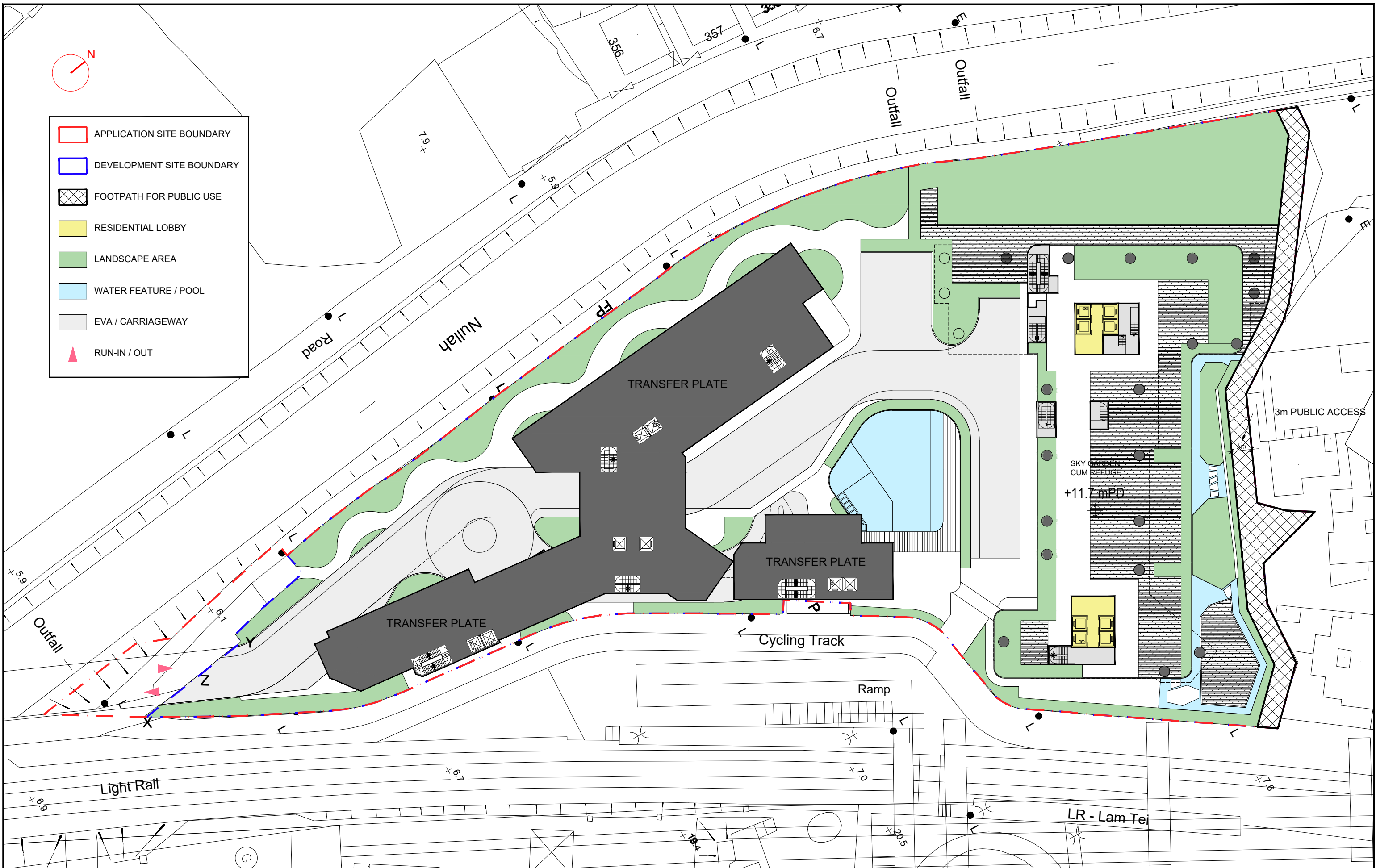


Proposed Rezoning from "Residential (Group B)1" Zone to "Residential (Group B)4" Zone for Medium-Density Housing Development to Include a Footpath for Public Use at Various Lots and Adjacent Government Land in DD130, Lam Tei, Tuen Mun

GROUND FLOOR

09-07-2024
1:500 (A3)

LWK
+PARTNERS



Proposed Rezoning from "Residential (Group B)1" Zone to "Residential (Group B)4" Zone for Medium-Density Housing Development to Include a Footpath for Public Use at Various Lots and Adjacent Government Land in DD130, Lam Tei, Tuen Mun

09-07-2024
1:500 (A3)

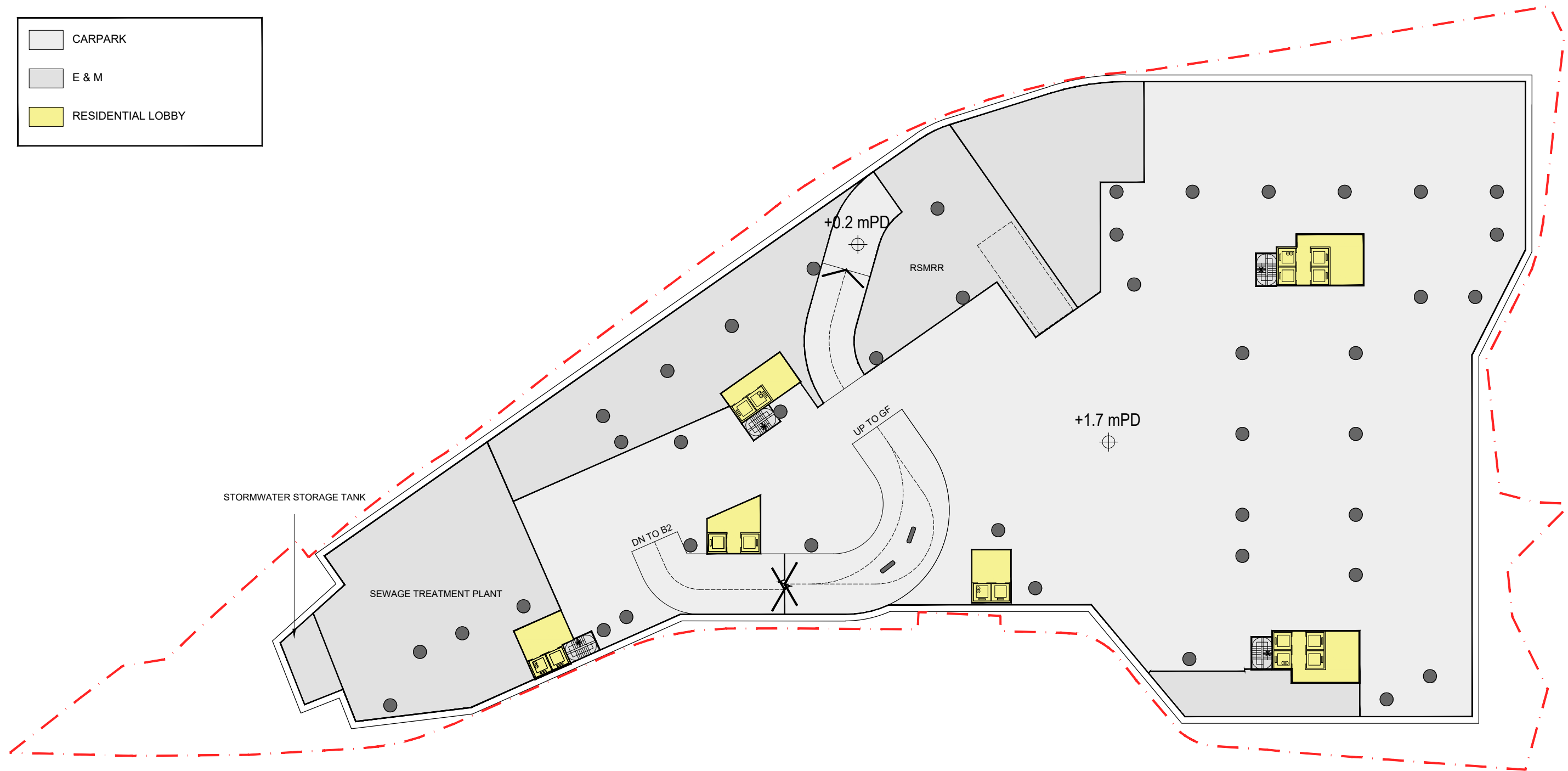
FIRST FLOOR

LWK
+PARTNERS



Legend:

- CARPARK (light grey square)
- E & M (medium grey square)
- RESIDENTIAL LOBBY (yellow square)



Number of car parking spaces at B1: 119
Total number of car parking spaces: 247


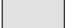

Proposed Rezoning from "Residential (Group B)1" Zone to "Residential (Group B)4" Zone for Medium-Density Housing Development to Include a Footpath for Public Use at Various Lots and Adjacent Government Land in DD130, Lam Tei, Tuen Mun

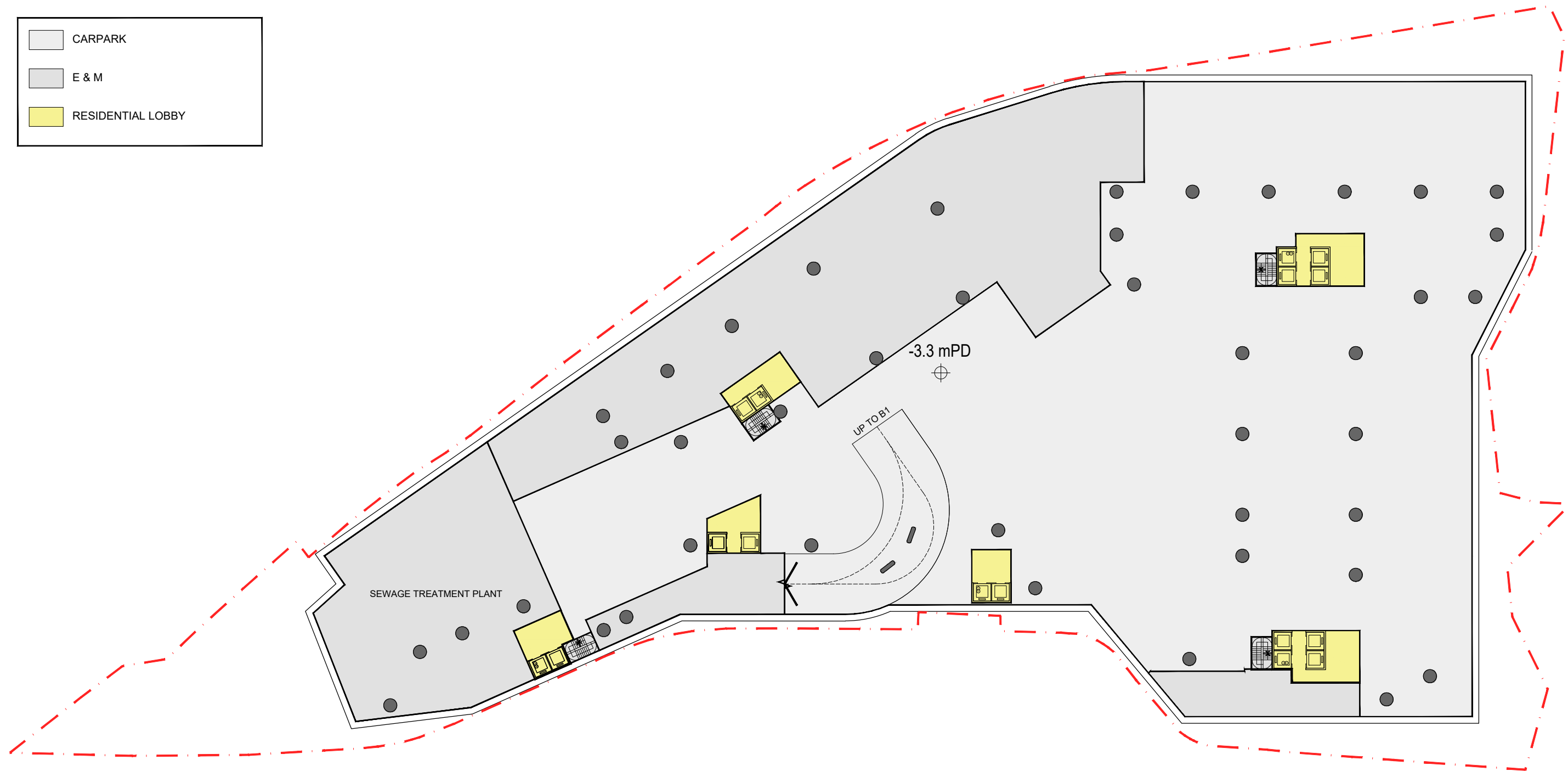
09-07-2024
1:500 (A3)

B1

LWK
+PARTNERS



	CARPARK
	E & M
	RESIDENTIAL LOBBY



Number of car parking spaces at B1: 128
Total number of car parking spaces: 247

Proposed Rezoning from "Residential (Group B)1" Zone to "Residential (Group B)4" Zone for Medium-Density Housing Development to Include a Footpath for Public Use at Various Lots and Adjacent Government Land in DD130, Lam Tei, Tuen Mun

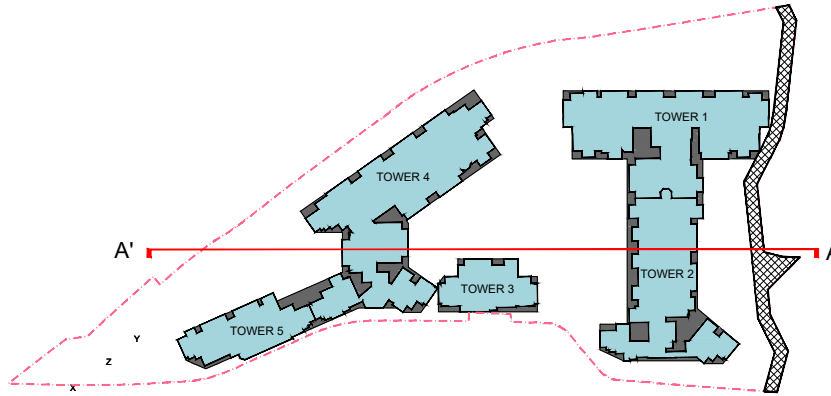
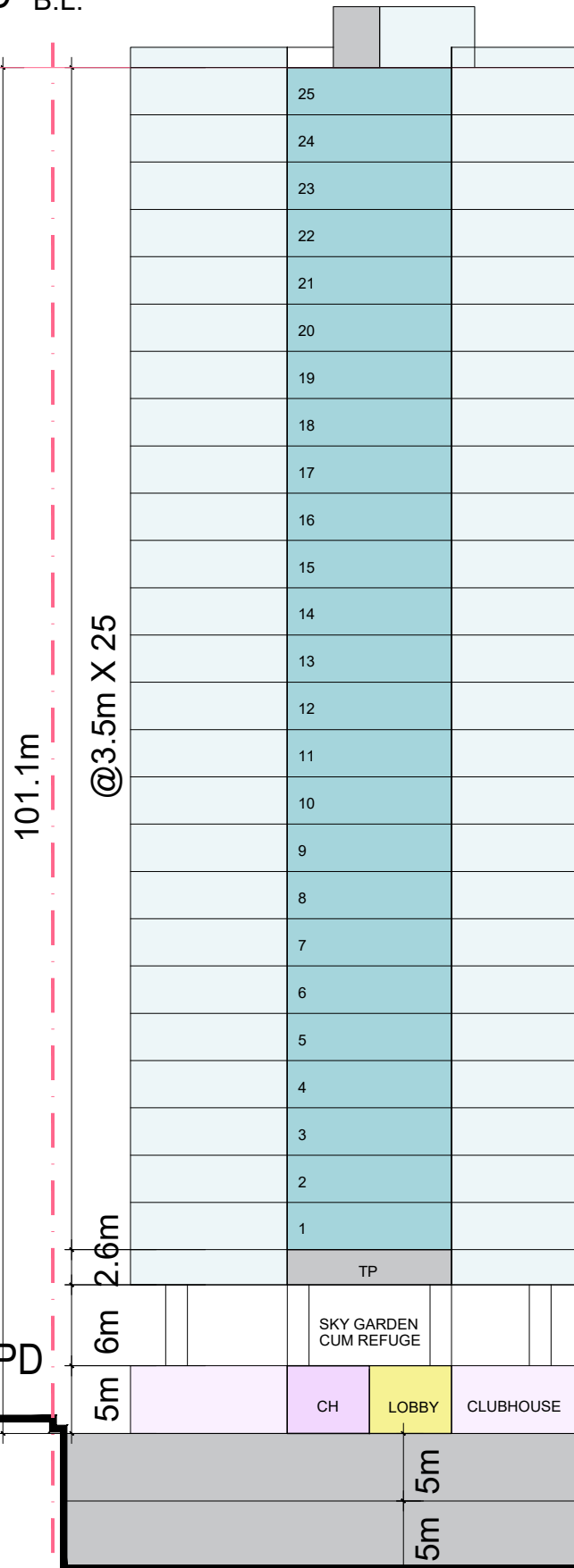
09-07-2024
1:500 (A3)

B2

LWK
+PARTNERS

TOWER 2

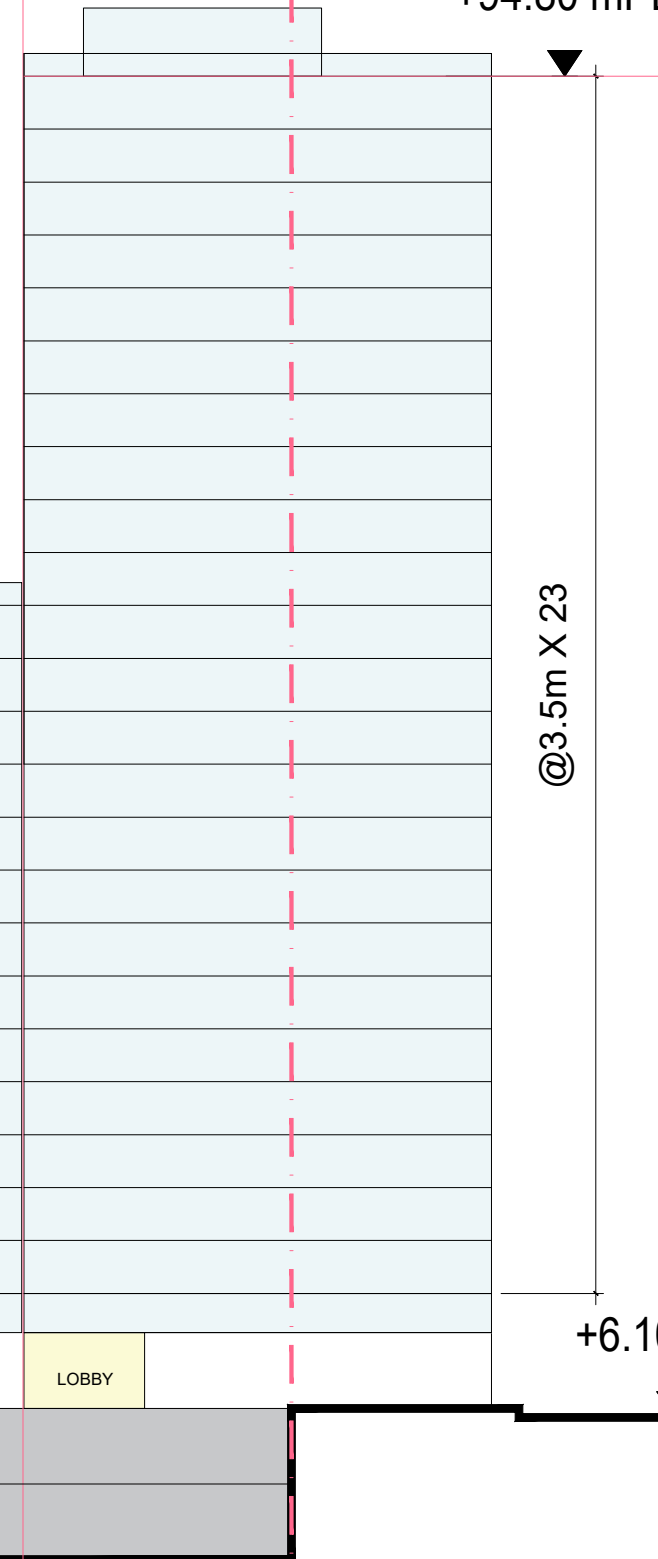
+107.80 mPD B.L.



B.L.

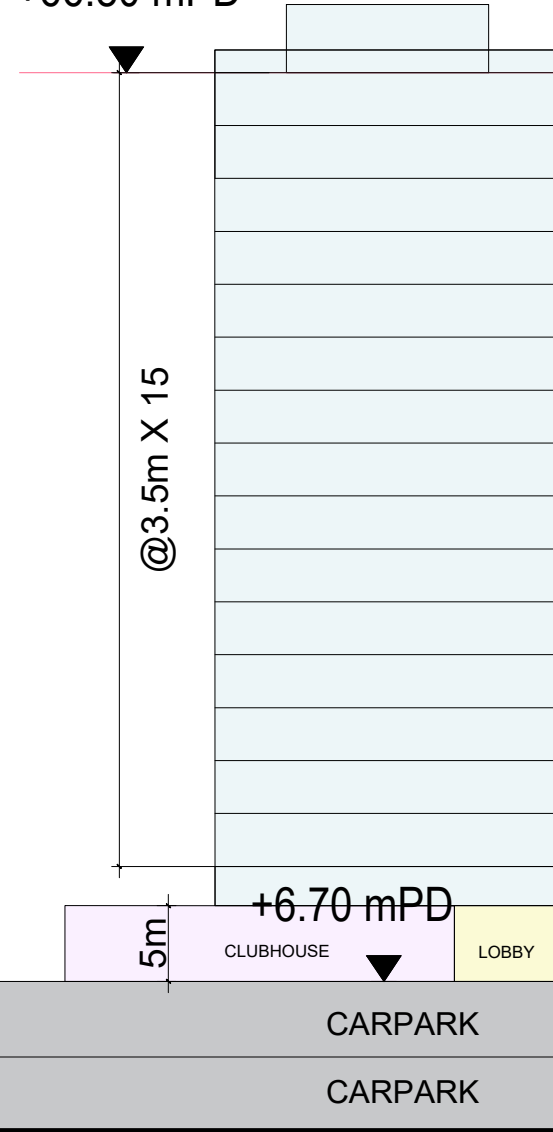
TOWER 5

+94.80 mPD

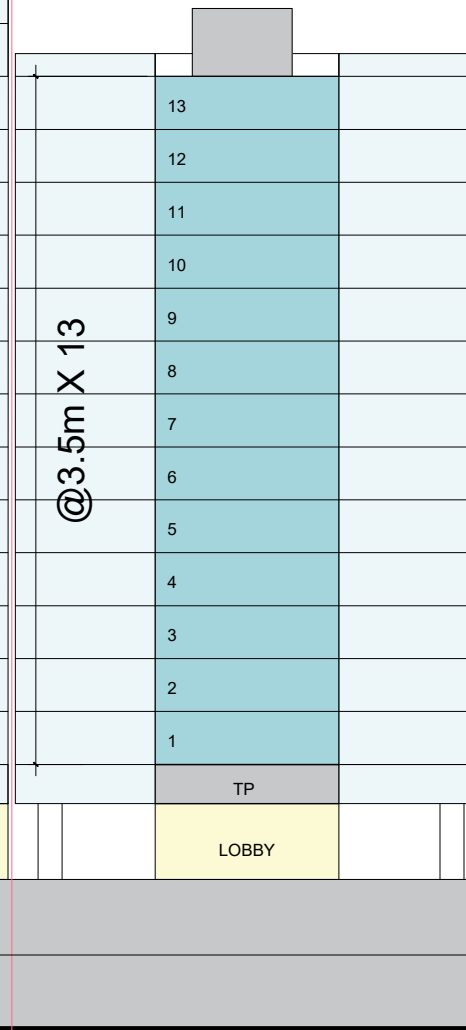


TOWER 3

+66.80 mPD



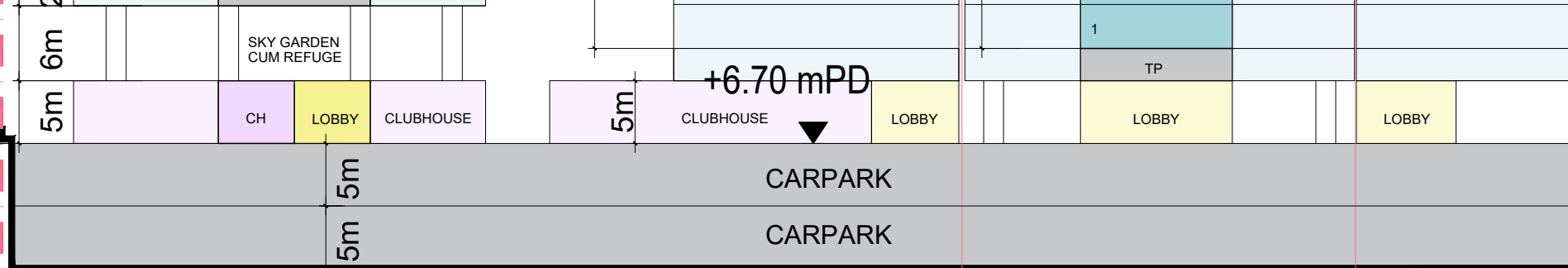
TOWER 4



+7.80 mPD +6.70 mPD

+6.70 mPD

+6.10 mPD

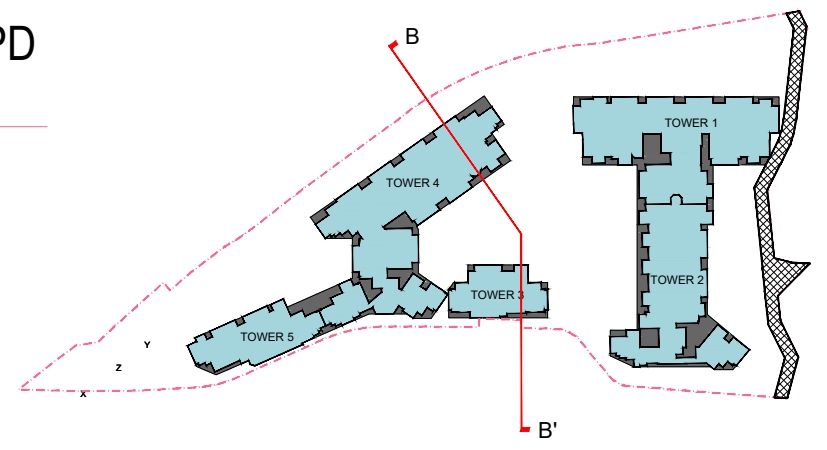
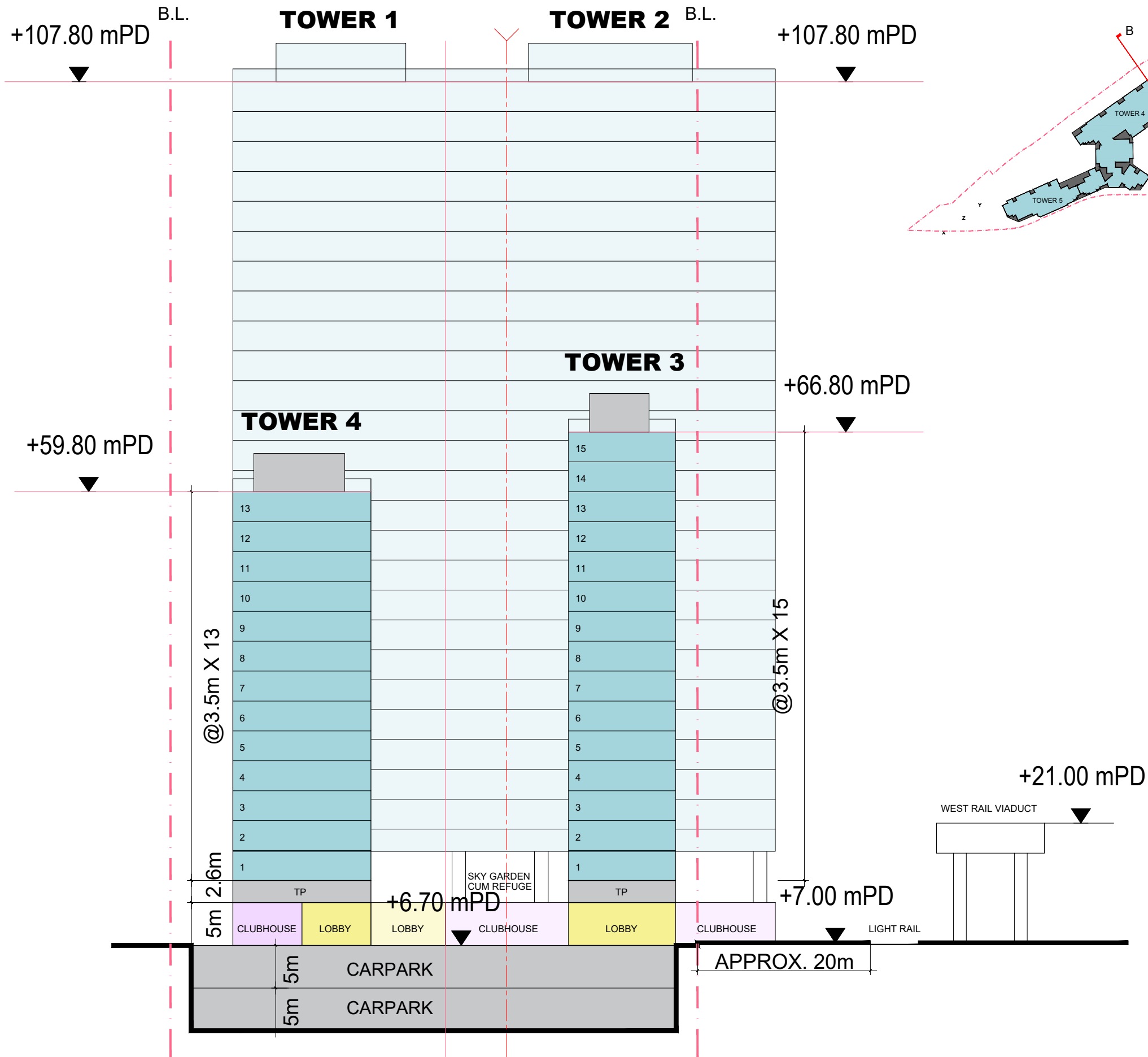


Proposed Rezoning from "Residential (Group B)1" Zone to "Residential (Group B)4" Zone for Medium-Density Housing Development to Include a Footpath for Public Use at Various Lots and Adjacent Government Land in DD130, Lam Tei, Tuen Mun

09-07-2024
1:500 (A3)

SCHEMATIC SECTION - SECTION A-A'

**LWK
+PARTNERS**

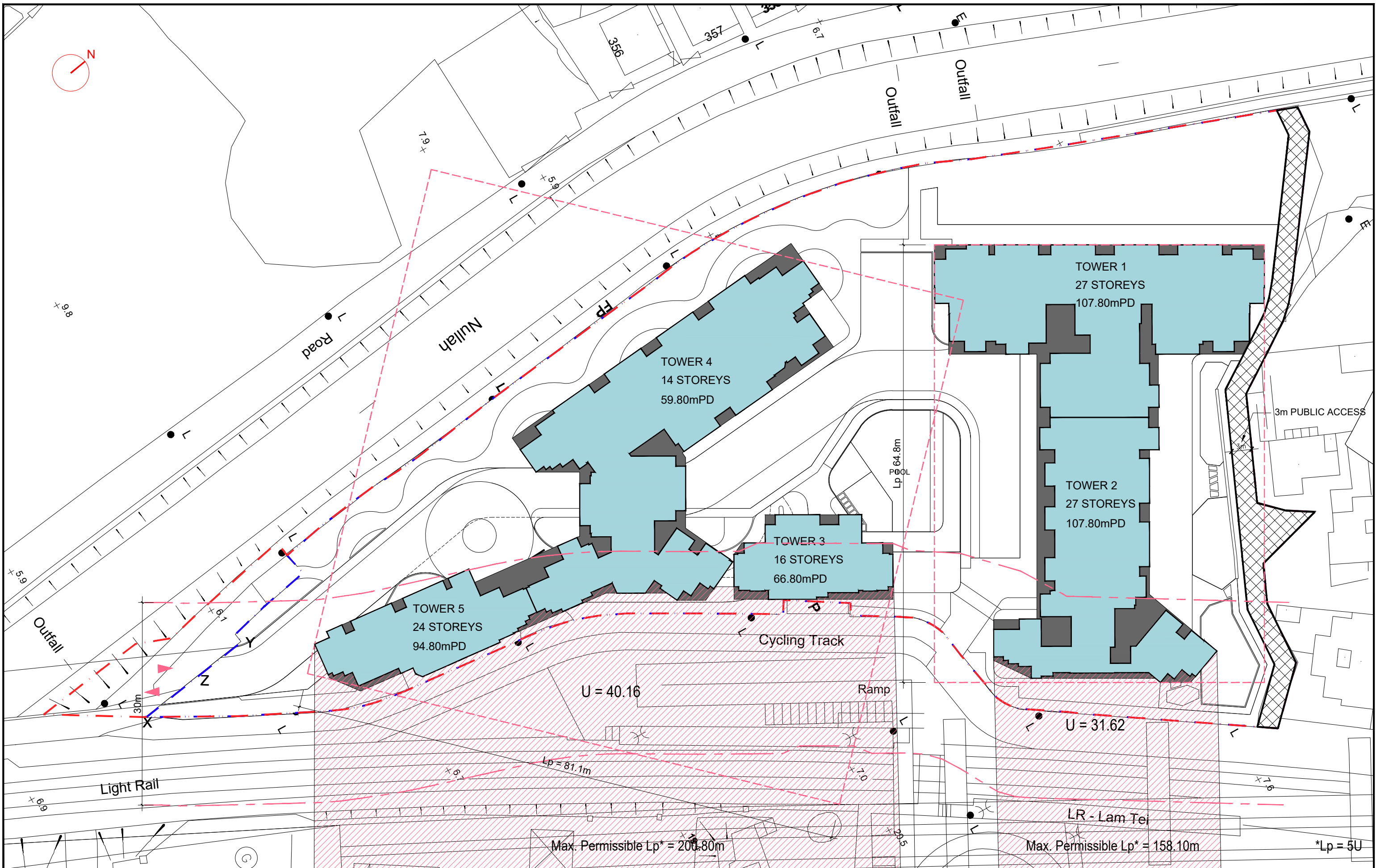


Proposed Rezoning from "Residential (Group B)1" Zone to "Residential (Group B)4" Zone for Medium-Density Housing Development to Include a Footpath for Public Use at Various Lots and Adjacent Government Land in DD130, Lam Tei, Tuen Mun

09-07-2024
1:500 (A3)

SCHMATIC SECTION - SECTION B-B'

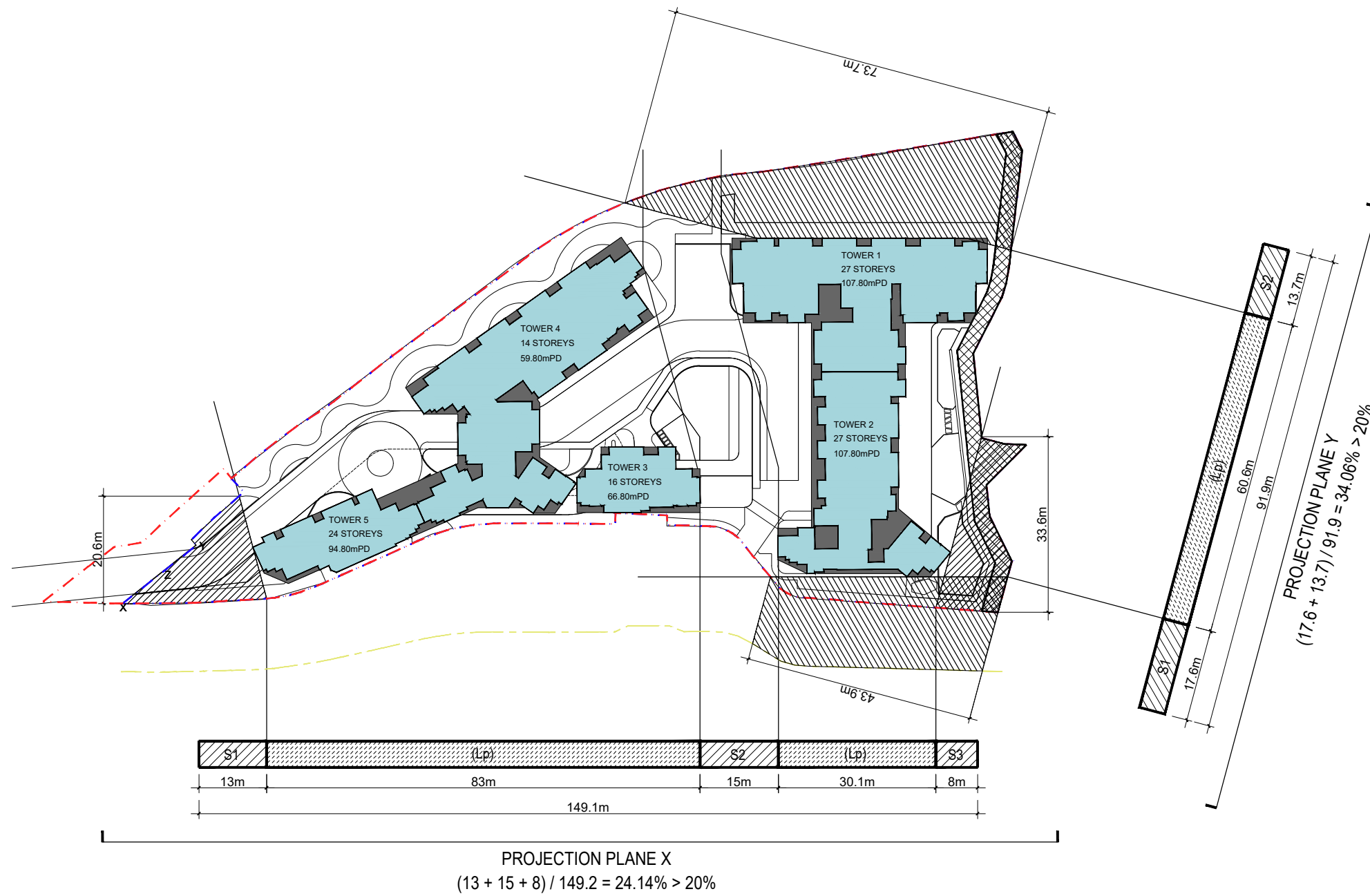




Proposed Rezoning from "Residential (Group B)1" Zone to "Residential (Group B)4" Zone for Medium-Density Housing Development to Include a Footpath for Public Use at Various Lots and Adjacent Government Land in DD130, Lam Tei, Tuen Mun

BUILDING SEPARATION





Proposed Rezoning from "Residential (Group B)1" Zone to "Residential (Group B)4" Zone for Medium-Density Housing Development to Include a Footpath for Public Use at Various Lots and Adjacent Government Land in DD130, Lam Tei, Tuen Mun

09-07-2024
1:1000 (A3)

PERMEABILITY

LWK
+PARTNERS