



Legend

- 1. Application Site
- 2. Long Ping MTR Station
- 3. Tai Tong Road Light Rail Station
- 4. Hong Lok Road Light Rail Station
- 5. Minibus Terminus
- 6. Pau Cheung Square Playground
- 7. Yuccie Square
- 8. Long Ching Estate
- 9. Hong Tak Institution of Old Age
- 10. Tai Tak (Tai Hang) Home for the Aged
- 11. Yuen Long Government Offices and Tai Yiu Market

Project Name

Redevelopment of Yuen Long Theatre at Lot No. 3678 in D.D. 120 Yuen Long New Territories

Figure Title

Location Plan
(Extracted from Town Planning Board Statutory Planning Portal 3)

Figure No.

Figure 1

Scale

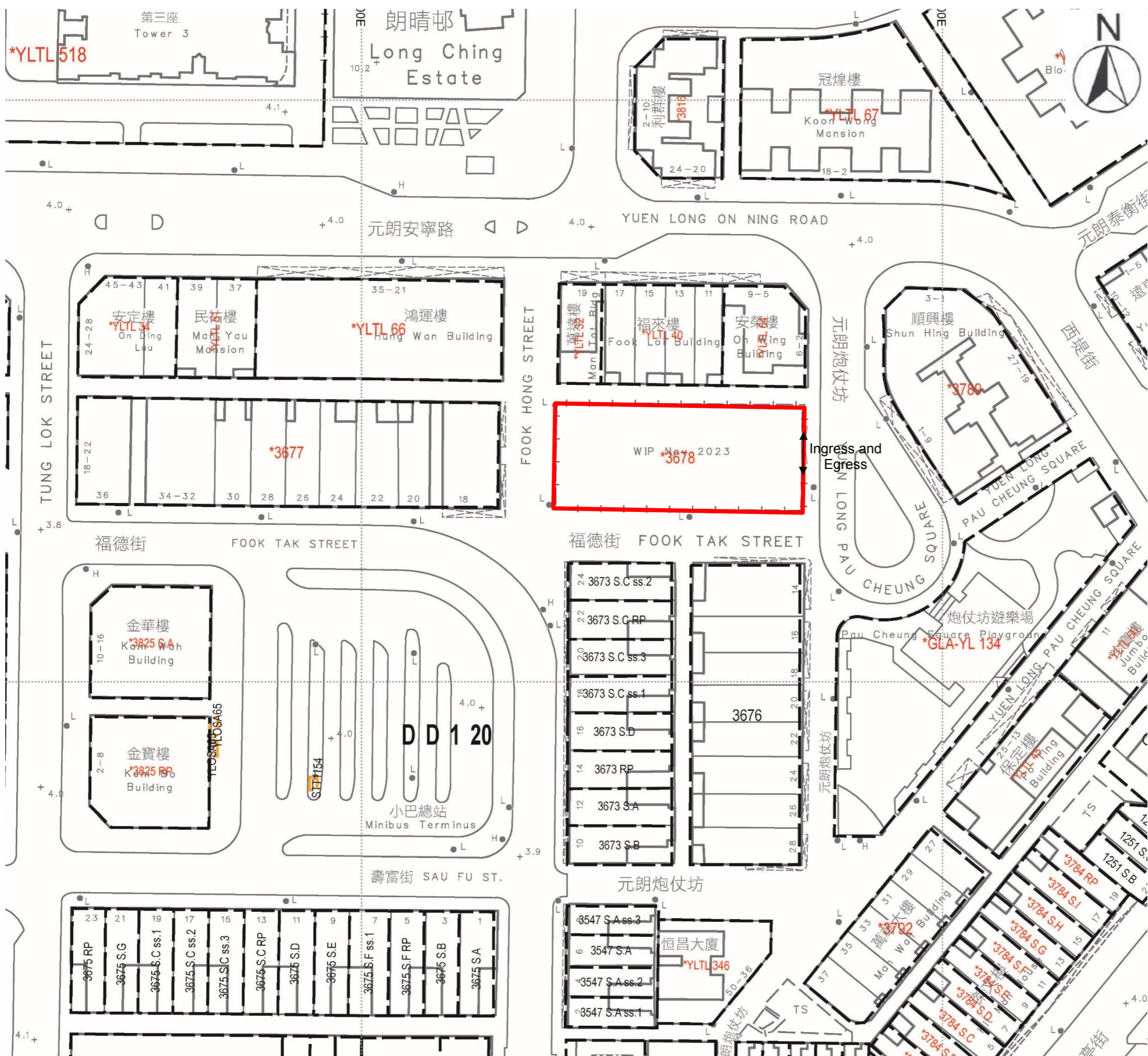
1 : 2600 at A3

Date

January 2024

Prepared by





Legend

 Application Site

Location

Redevelopment of Yuen Long Theatre at Lot No. 3678 in D.D. 120 Yuen Long New Territories

Project Name

Lot Inde Plan
(E tracted from the Lot Inde Plan from the Lands Department)

Figure No.

Figure 2

Scale

1 : 700 at A3

Date

January 2024

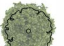




Prepared by

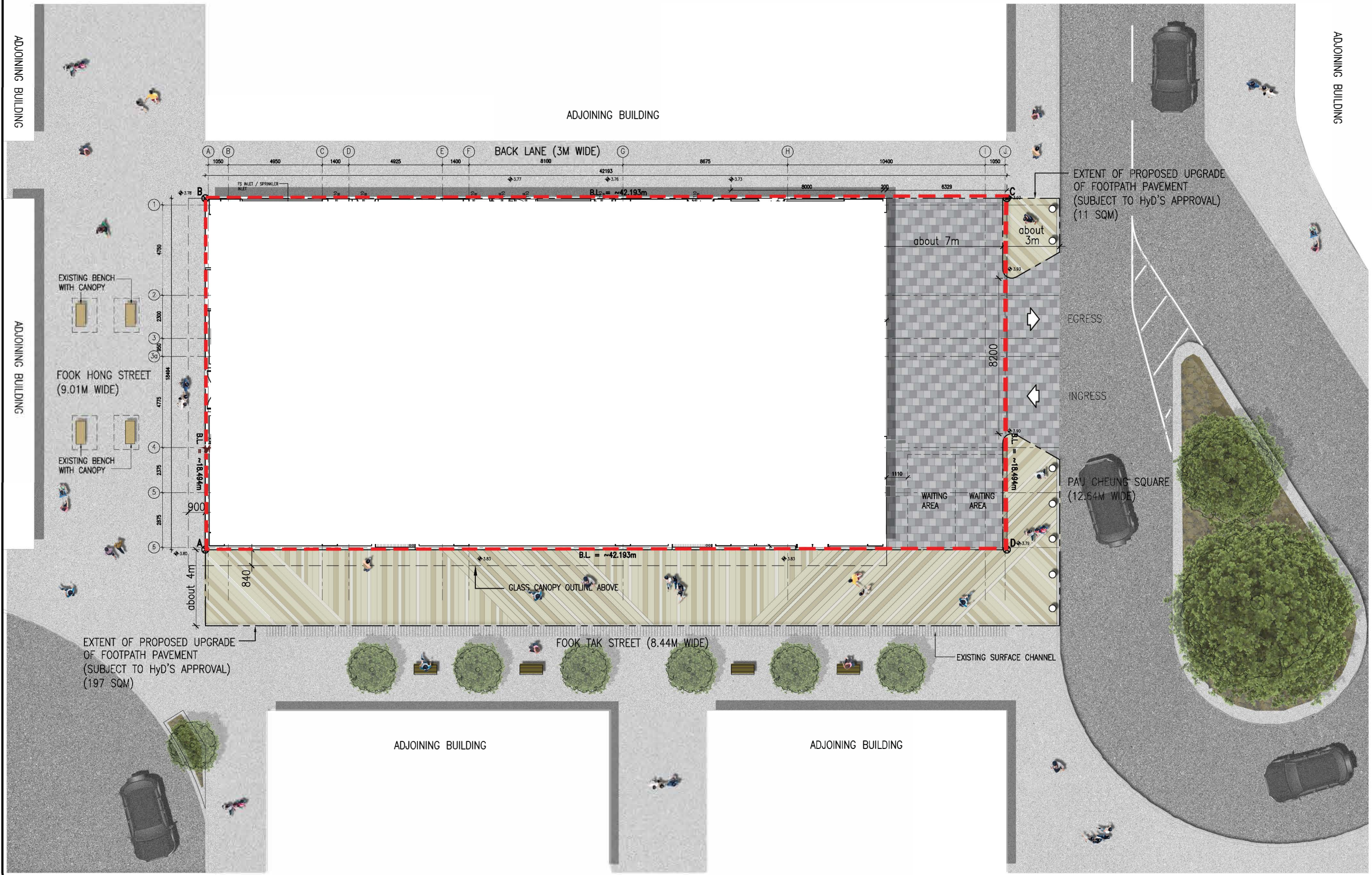


Appendix 2 –

Proposed Development Scheme

LEGEND

-  EXISTING TREE
-  NEW BENCH
-  NEW BOLLARD
-  PAVING AREA (208 M²)
-  SITE BOUNDARY



This drawing and the contents are the copyright of I Consultants & Contracting Co. Ltd.
 No part of the drawing and the design contained herein may be reproduced without the prior written consent of a director of I Consultants & Contracting Co. Ltd.
 Do not take measurements directly from this drawing.
 Check and verify all dimensions on site.
 Read this drawing in conjunction with the specifications and all other related drawings.
 Notify the Architect immediately of any discrepancy found herein.

Rev.	Date	Description

Project Name:
 Redevelopment of Yuen Long Theatre at Lot No. 3678 in D.D. 120, Yuen Long, N.T.

Planning Consultant:
 DeSPACE (International) Limited

Architect:
 I Consultants & Contracting Company Limited

Traffic Consultant:
 CTA Consultants Limited

Environmental Consultant:
 BeeXergy Consulting Limited

Structural and Geotechnical Engineer:
 S. T. Wong & Partners Limited

Drawing Title:
 PROPOSED STREETScape PLAN

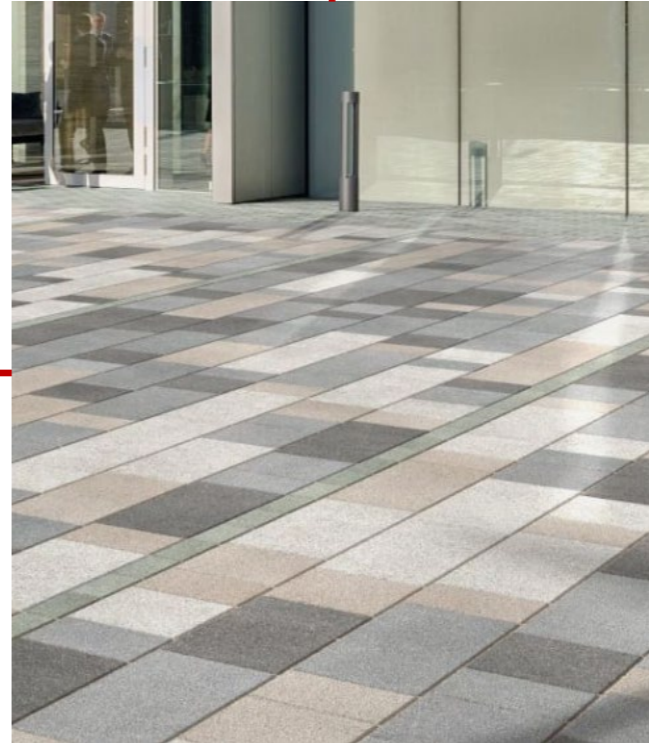
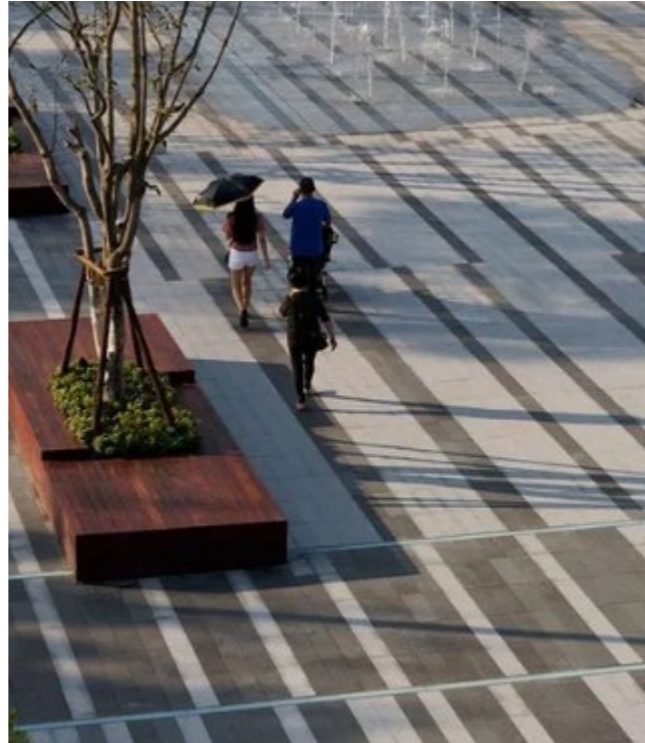
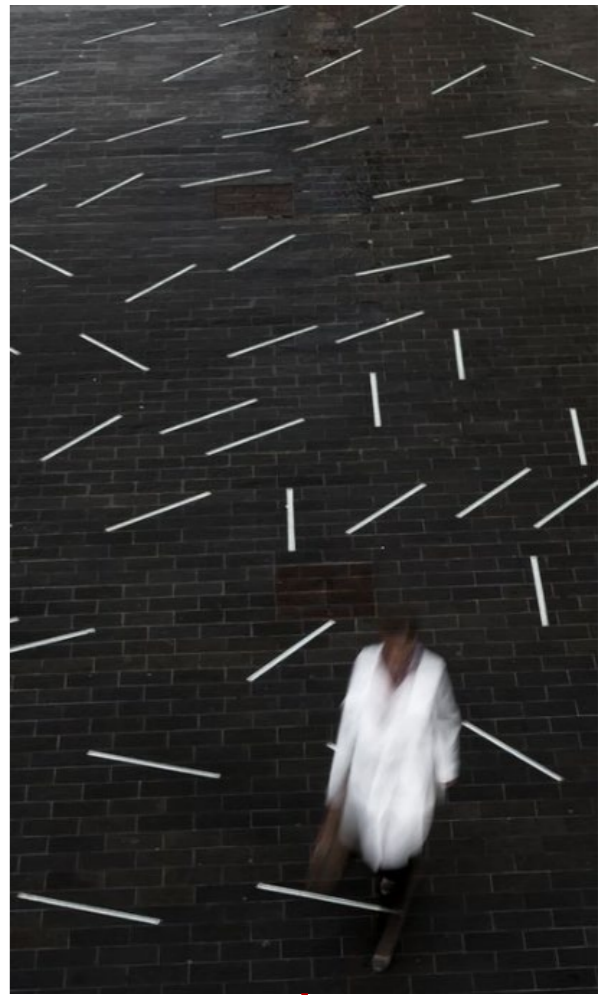
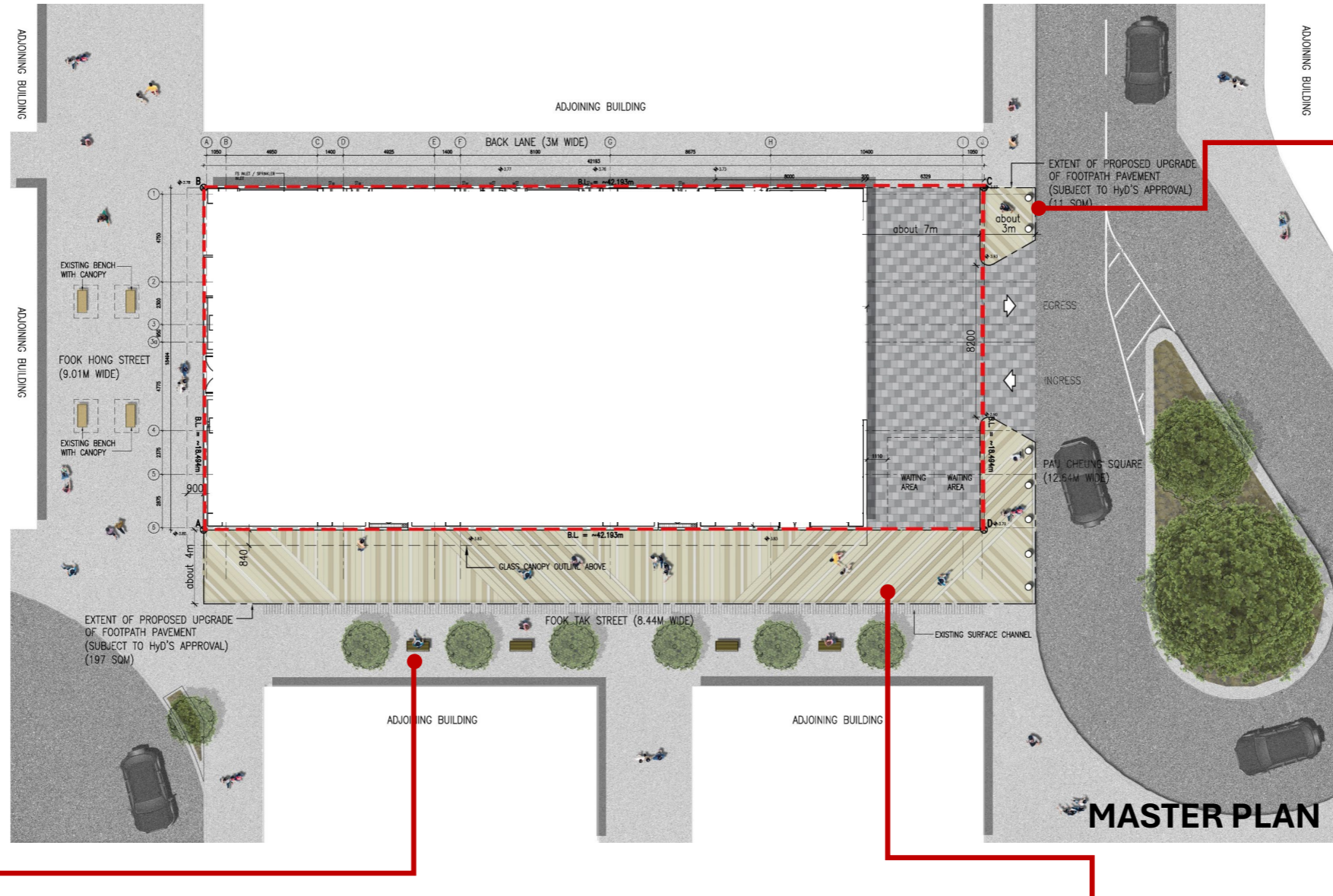
Designed by: JODY
 Drawn by: JODY
 Checked by: CAL.

Scale: 1 : 200 Paper: A3

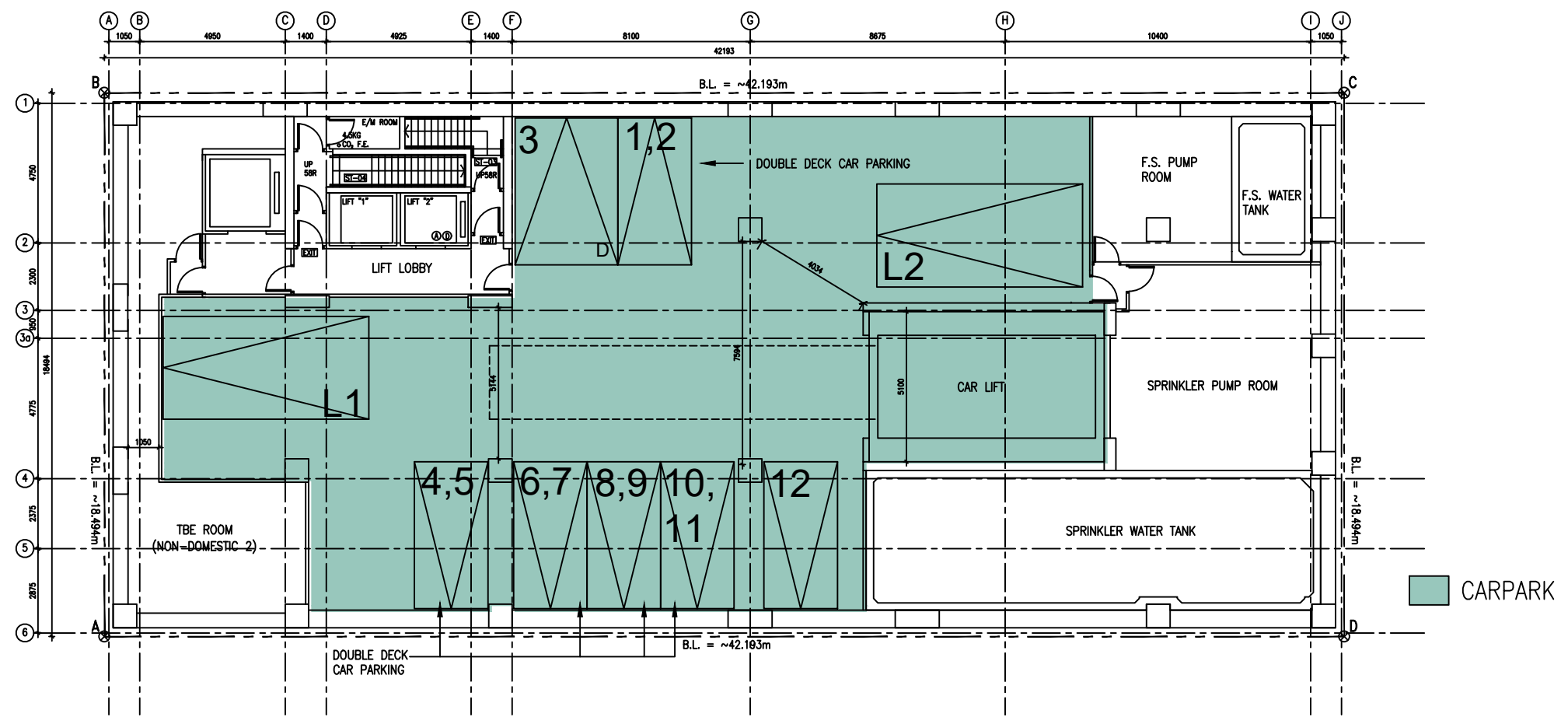
Drawing Number: GBP012

PROPOSED STREETScape PLAN

DESIGN REFERENCE PHOTOS



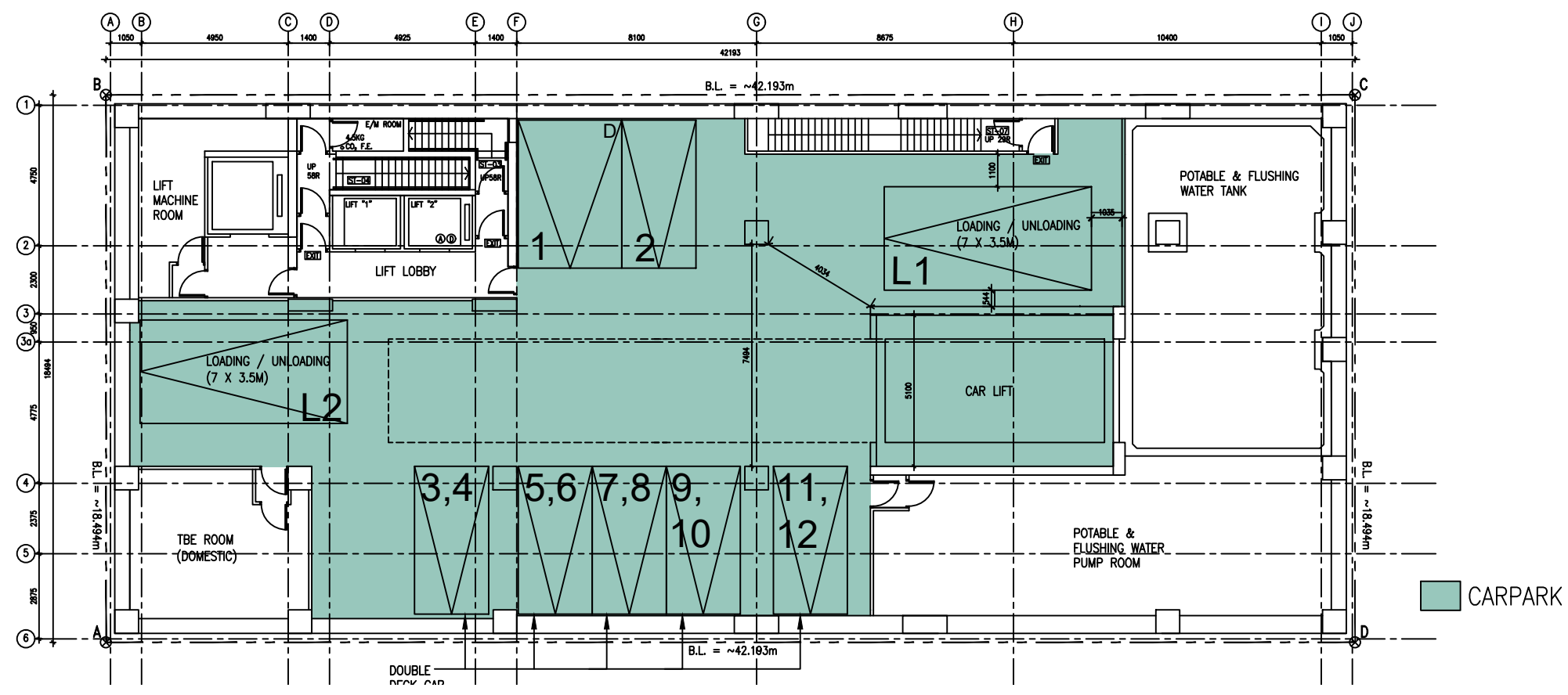
- This drawing and the contents are the copyright of I Consultants & Contracting Co. Ltd.
 - No part of the drawing and the design contained herein may be reproduced without the prior written consent of a director of I Consultants & Contracting Co. Ltd.
 - Do not take measurements directly from this drawing.
 - Check and verify all dimensions on site.
 - Read this drawing in conjunction with the specifications and all other related drawings.
 - Notify the Architect immediately of any discrepancy found herein.



B2/F LAYOUT PLAN

Rev.	Date	Description
Project Name:		
Redevelopment of Yuen Long Theatre at Lot No. 3678 in D.D. 120, Yuen Long, N.T.		
Planning Consultant : DeSPACE (International) Limited		
Architect : I Consultants & Contracting Company Limited		
Traffic Consultant : CTA Consultants Limited		
Environmental Consultant : BeeXergy Consulting Limited		
Structural and Geotechnical Engineer : S. T. Wong & Partners Limited		
Drawing Title:		
B2/F LAYOUT PLAN		
Designed by: JODY		
Drawn by: JODY		
Checked by: CAL.		
Scale: 1 : 200	Paper: A3	
Drawing Number		Revision Letter
GBP001		

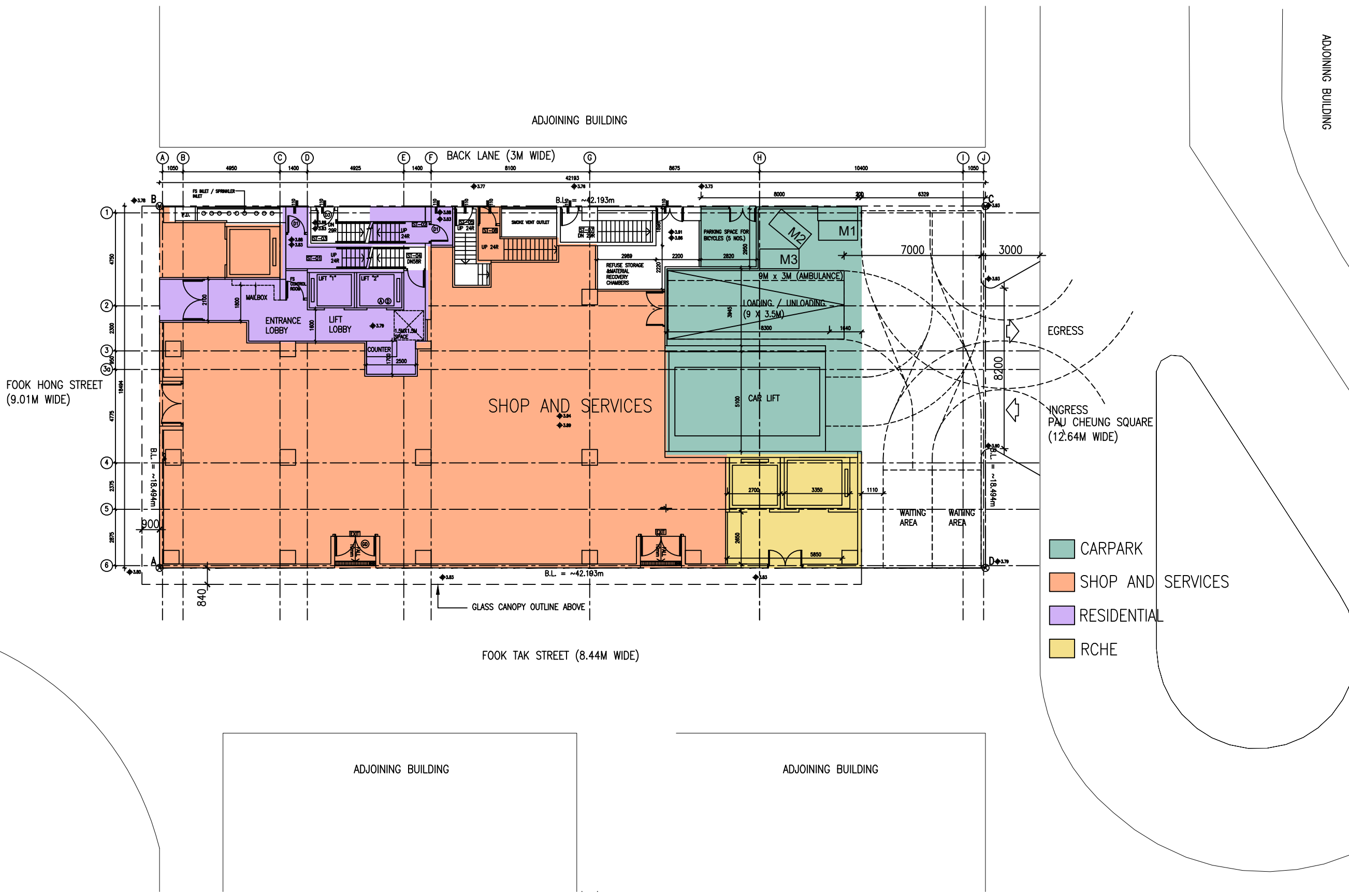
- This drawing and the contents are the copyright of I Consultants & Contracting Co. Ltd.
 - No part of the drawing and the design contained herein may be reproduced without the prior written consent of a director of I Consultants & Contracting Co. Ltd.
 - Do not take measurements directly from this drawing.
 - Check and verify all dimensions on site.
 - Read this drawing in conjunction with the specifications and all other related drawings.
 - Notify the Architect immediately of any discrepancy found herein.



B1/F LAYOUT PLAN

Rev.	Date	Description
Project Name:		
Redevelopment of Yuen Long Theatre at Lot No. 3678 in D.D. 120, Yuen Long, N.T.		
Planning Consultant : DeSPACE (International) Limited		
Architect : I Consultants & Contracting Company Limited		
Traffic Consultant : CTA Consultants Limited		
Environmental Consultant : BeeXergy Consulting Limited		
Structural and Geotechnical Engineer : S. T. Wong & Partners Limited		
Drawing Title:		
B1/F LAYOUT PLAN		
Designed by: JODY		Drawn by: JODY
Checked by: CAL.		Scale: 1 : 200
Drawing Number: GBP002		Paper: A3
		Revision Letter

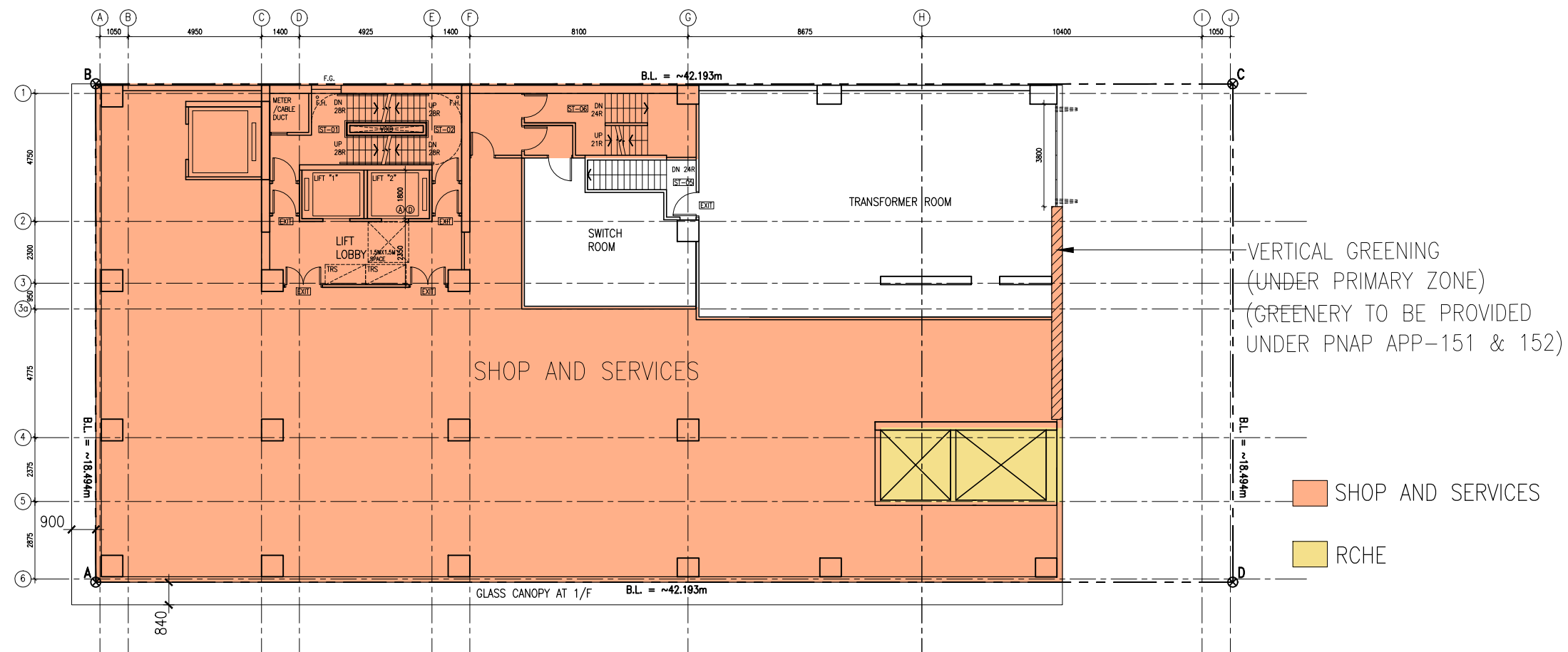
- This drawing and the contents are the copyright of I Consultants & Contracting Co. Ltd.
 - No part of the drawing and the design contained herein may be reproduced without the prior written consent of a director of I Consultants & Contracting Co. Ltd.
 - Do not take measurements directly from this drawing.
 - Check and verify all dimensions on site.
 - Read this drawing in conjunction with the specifications and all other related drawings.
 - Notify the Architect immediately of any discrepancy found herein.



G/F LAYOUT PLAN

Rev.	Date	Description
Project Name:		
Redevelopment of Yuen Long Theatre at Lot No. 3678 in D.D. 120, Yuen Long, N.T.		
Planning Consultant : DeSPACE (International) Limited		
Architect : I Consultants & Contracting Company Limited		
Traffic Consultant : CTA Consultants Limited		
Environmental Consultant : BeeXergy Consulting Limited		
Structural and Geotechnical Engineer : S. T. Wong & Partners Limited		
Drawing Title:		
G/F LAYOUT PLAN		
Designed by: JODY		Revision Letter
Drawn by: JODY		
Checked by: CAL.		
Scale: 1 : 200	Paper: A3	
Drawing Number: GBP003		

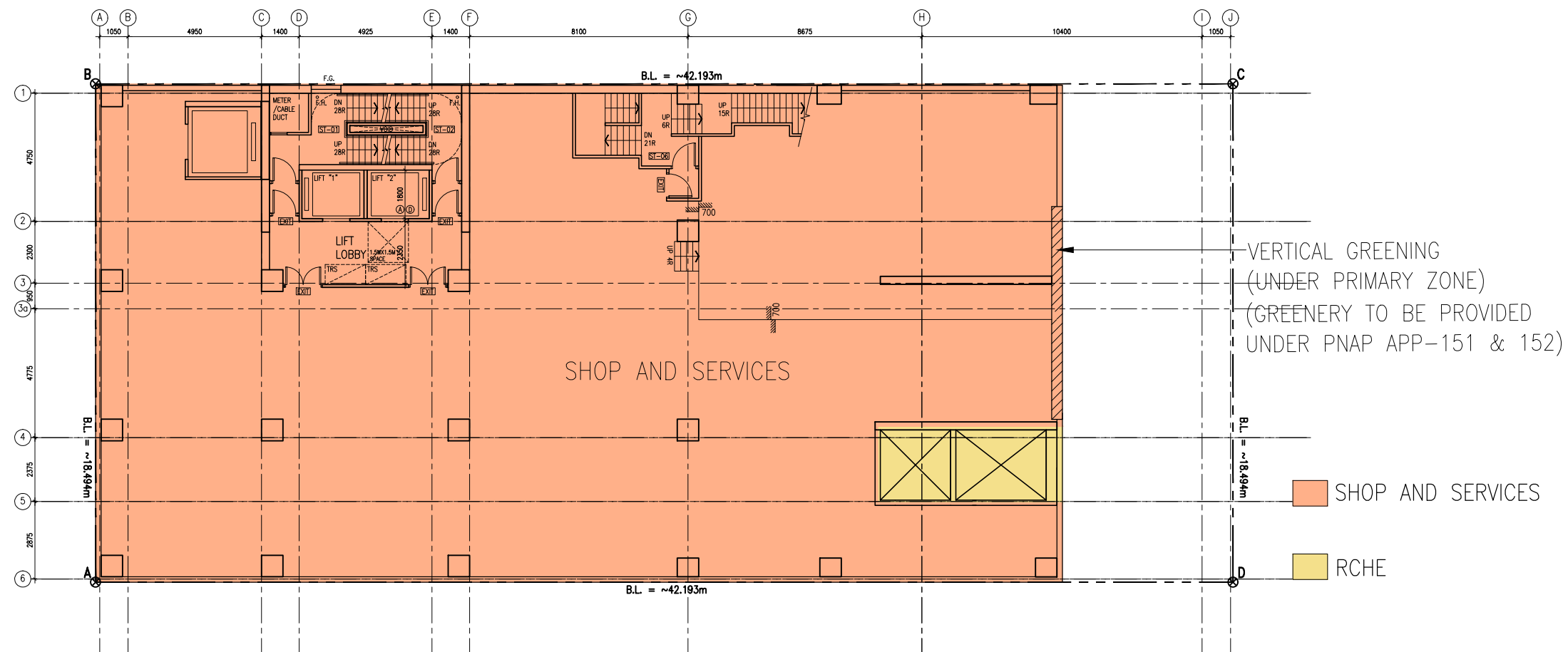
- This drawing and the contents are the copyright of I Consultants & Contracting Co. Ltd.
 - No part of the drawing and the design contained herein may be reproduced without the prior written consent of a director of I Consultants & Contracting Co. Ltd.
 - Do not take measurements directly from this drawing.
 - Check and verify all dimensions on site.
 - Read this drawing in conjunction with the specifications and all other related drawings.
 - Notify the Architect immediately of any discrepancy found herein.



1/F LAYOUT PLAN

Rev.	Date	Description
Project Name:		
Redevelopment of Yuen Long Theatre at Lot No. 3678 in D.D. 120, Yuen Long, N.T.		
Planning Consultant : DeSPACE (International) Limited		
Architect : I Consultants & Contracting Company Limited		
Traffic Consultant : CTA Consultants Limited		
Environmental Consultant : BeeXergy Consulting Limited		
Structural and Geotechnical Engineer : S. T. Wong & Partners Limited		
Drawing Title:		
1/F LAYOUT PLAN		
Designed by: JODY		
Drawn by: JODY		
Checked by: CAL.		
Scale: 1 : 200	Paper: A3	
Drawing Number		Revision Letter
GBP004A		

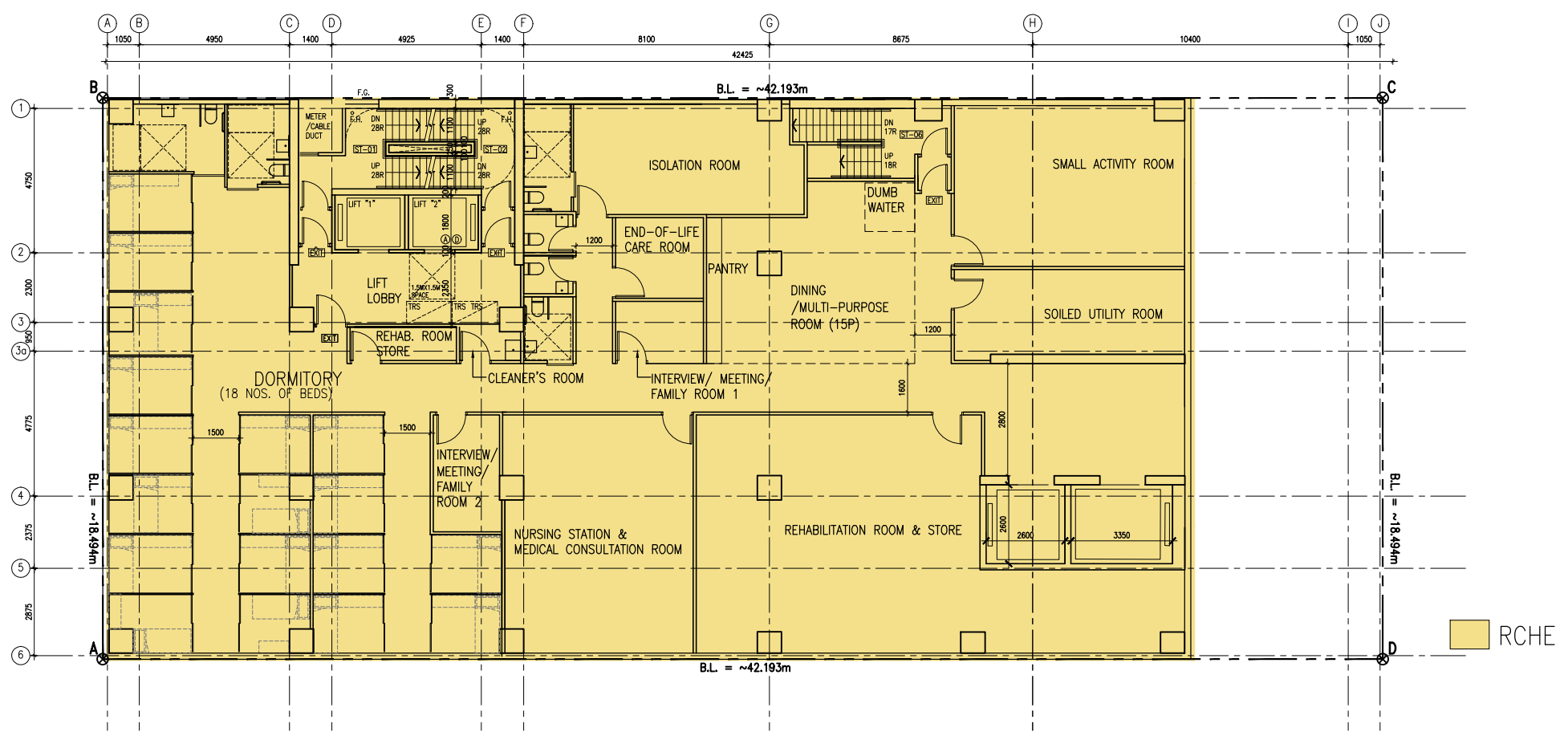
- This drawing and the contents are the copyright of I Consultants & Contracting Co. Ltd.
 - No part of the drawing and the design contained herein may be reproduced without the prior written consent of a director of I Consultants & Contracting Co. Ltd.
 - Do not take measurements directly from this drawing.
 - Check and verify all dimensions on site.
 - Read this drawing in conjunction with the specifications and all other related drawings.
 - Notify the Architect immediately of any discrepancy found herein.



2/F LAYOUT PLAN

Rev.	Date	Description
Project Name:		
Redevelopment of Yuen Long Theatre at Lot No. 3678 in D.D. 120, Yuen Long, N.T.		
Planning Consultant : DeSPACE (International) Limited		
Architect : I Consultants & Contracting Company Limited		
Traffic Consultant : CTA Consultants Limited		
Environmental Consultant : BeeXergy Consulting Limited		
Structural and Geotechnical Engineer : S. T. Wong & Partners Limited		
Drawing Title:		
2/F LAYOUT PLAN		
Designed by: JODY		
Drawn by: JODY		
Checked by: CAL.		
Scale: 1 : 200	Paper: A3	
Drawing Number		Revision Letter
GBP004B		

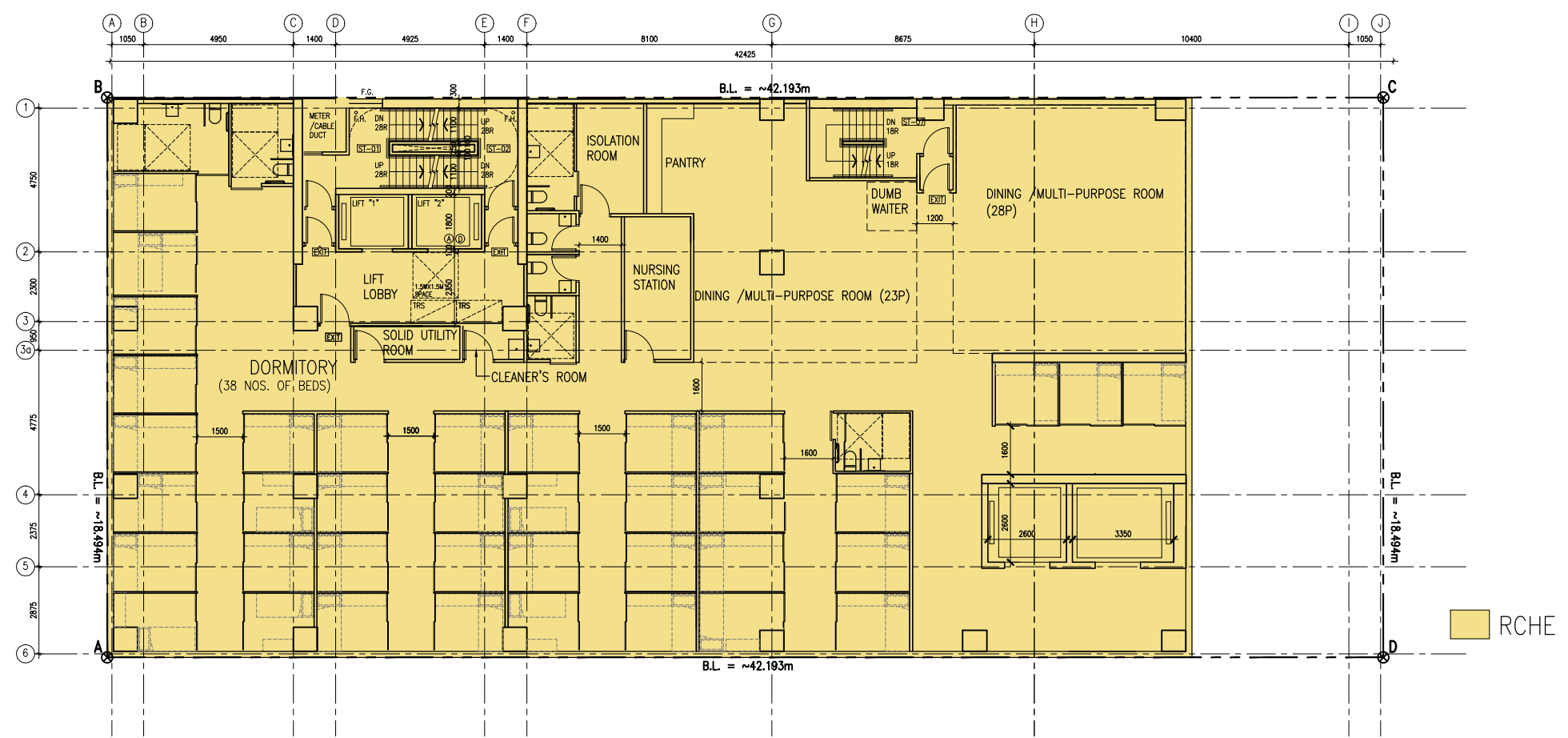
- This drawing and the contents are the copyright of I Consultants & Contracting Co. Ltd.
 - No part of the drawing and the design contained herein may be reproduced without the prior written consent of a director of I Consultants & Contracting Co. Ltd.
 - Do not take measurements directly from this drawing.
 - Check and verify all dimensions on site.
 - Read this drawing in conjunction with the specifications and all other related drawings.
 - Notify the Architect immediately of any discrepancy found herein.



3/F LAYOUT PLAN (DORMITORY FOR RCHE)

Rev.	Date	Description
Project Name:		
Redevelopment of Yuen Long Theatre at Lot No. 3678 in D.D. 120, Yuen Long, N.T.		
Planning Consultant : DeSPACE (International) Limited		
Architect : I Consultants & Contracting Company Limited		
Traffic Consultant : CTA Consultants Limited		
Environmental Consultant : BeeXergy Consulting Limited		
Structural and Geotechnical Engineer : S. T. Wong & Partners Limited		
Drawing Title:		
3/F LAYOUT PLAN		
Designed by: JODY		
Drawn by: JODY		
Checked by: CAL.		
Scale: 1 : 200	Paper: A3	
Drawing Number		Revision Letter
GBP005		

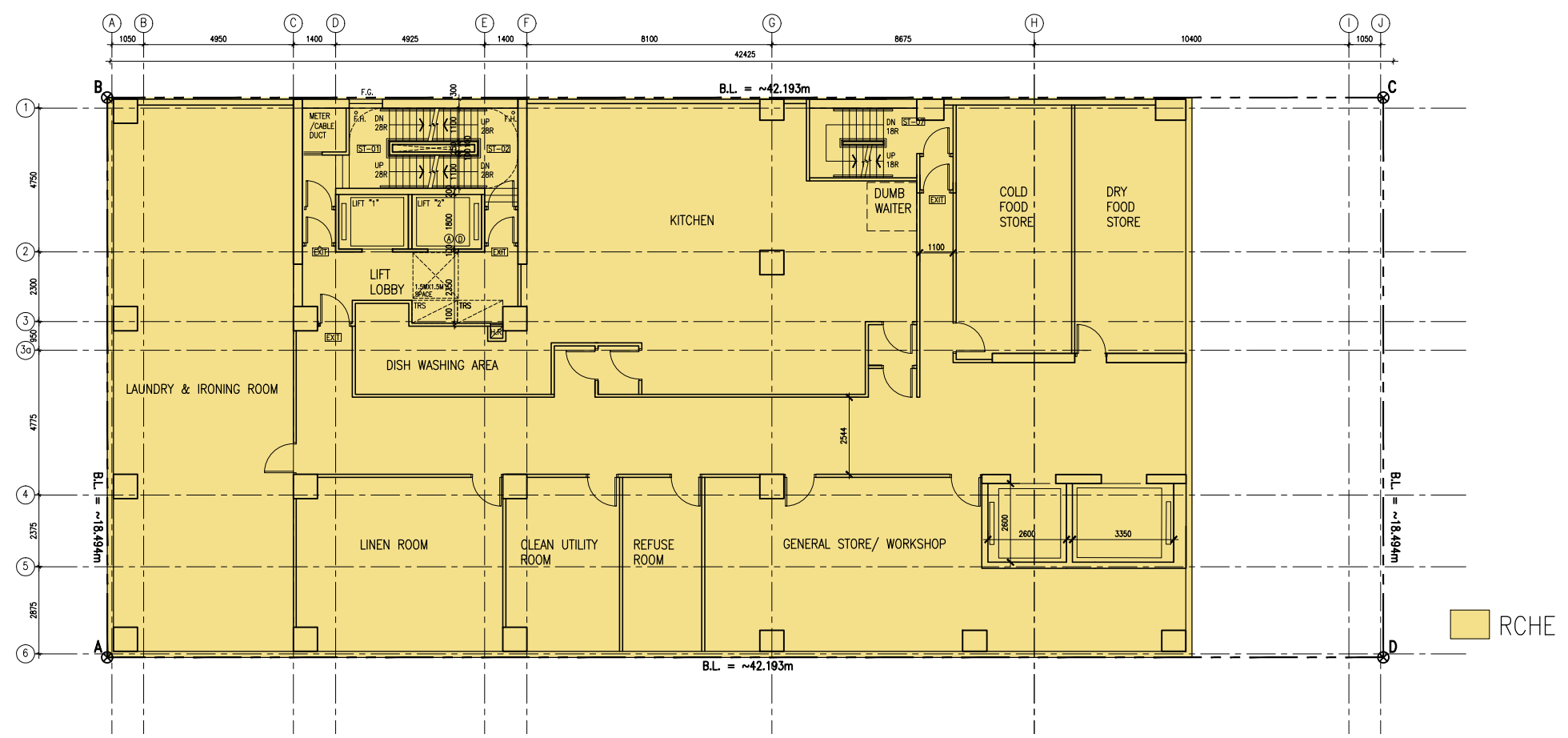
- This drawing and the contents are the copyright of I Consultants & Contracting Co. Ltd.
 - No part of the drawing and the design contained herein may be reproduced without the prior written consent of a director of I Consultants & Contracting Co. Ltd.
 - Do not take measurements directly from this drawing.
 - Check and verify all dimensions on site.
 - Read this drawing in conjunction with the specifications and all other related drawings.
 - Notify the Architect immediately of any discrepancy found herein.



4/F TO 7/F LAYOUT PLAN (DORMITORY FOR RCHE)

Rev.	Date	Description
Project Name:		
Redevelopment of Yuen Long Theatre at Lot No. 3678 in D.D. 120, Yuen Long, N.T.		
Planning Consultant : DeSPACE (International) Limited		
Architect : I Consultants & Contracting Company Limited		
Traffic Consultant : CTA Consultants Limited		
Environmental Consultant : BeeXergy Consulting Limited		
Structural and Geotechnical Engineer : S. T. Wong & Partners Limited		
Drawing Title:		
4/F TO 7/F LAYOUT PLAN		
Designed by: JODY		Revision Letter
Drawn by: JODY		
Checked by: CAL.		
Scale: 1 : 200	Paper: A3	
Drawing Number		
GBP006		

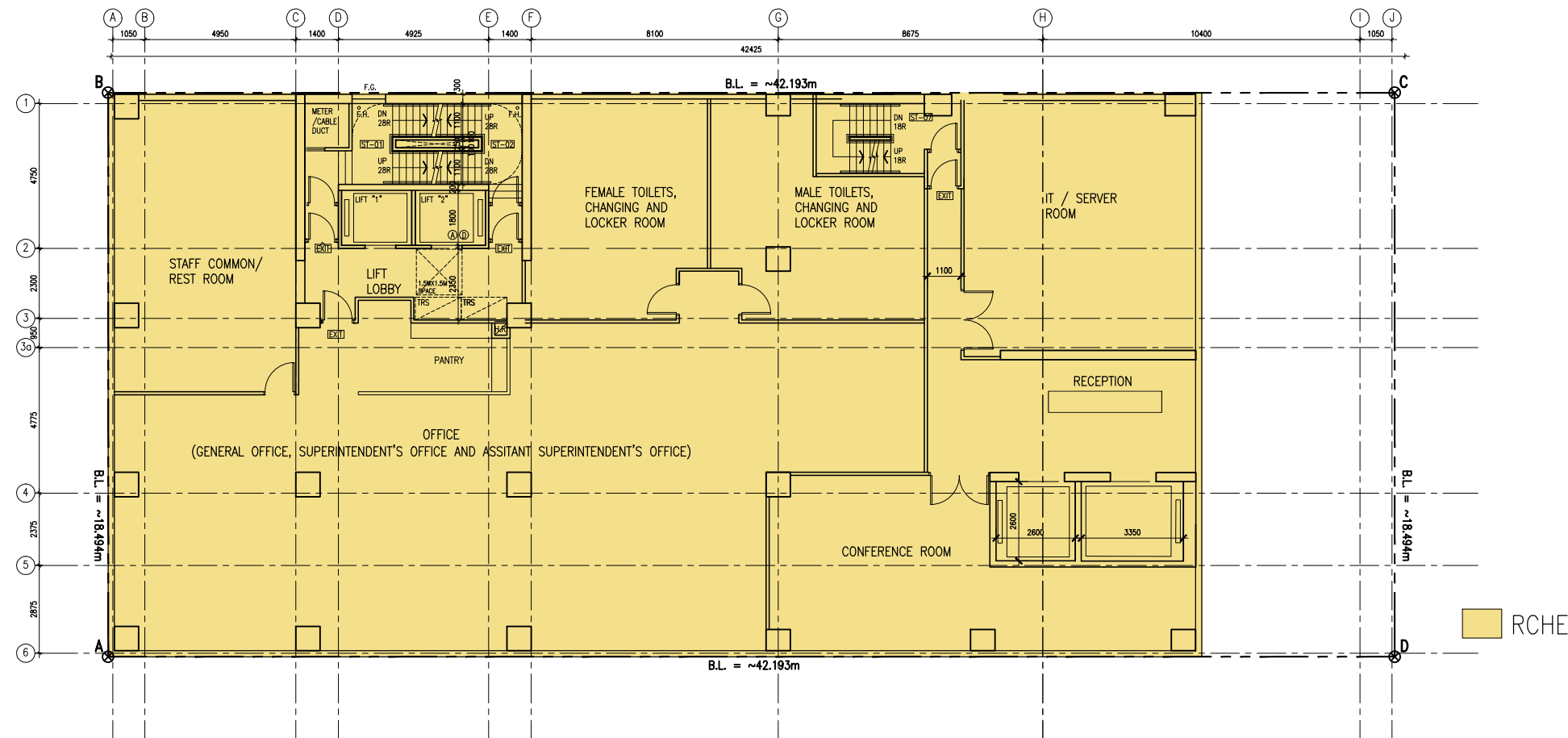
- This drawing and the contents are the copyright of I Consultants & Contracting Co. Ltd.
 - No part of the drawing and the design contained herein may be reproduced without the prior written consent of a director of I Consultants & Contracting Co. Ltd.
 - Do not take measurements directly from this drawing.
 - Check and verify all dimensions on site.
 - Read this drawing in conjunction with the specifications and all other related drawings.
 - Notify the Architect immediately of any discrepancy found herein.



8/F LAYOUT PLAN (OFFICE & BOH FOR RCHE)

Rev.	Date	Description
Project Name:		
Redevelopment of Yuen Long Theatre at Lot No. 3678 in D.D. 120, Yuen Long, N.T.		
Planning Consultant : DeSPACE (International) Limited		
Architect : I Consultants & Contracting Company Limited		
Traffic Consultant : CTA Consultants Limited		
Environmental Consultant : BeeXergy Consulting Limited		
Structural and Geotechnical Engineer : S. T. Wong & Partners Limited		
Drawing Title:		
8/F LAYOUT PLAN		
Designed by: JODY		
Drawn by: JODY		
Checked by: CAL.		
Scale: 1 : 200	Paper: A3	
Drawing Number		Revision Letter
GBP007		

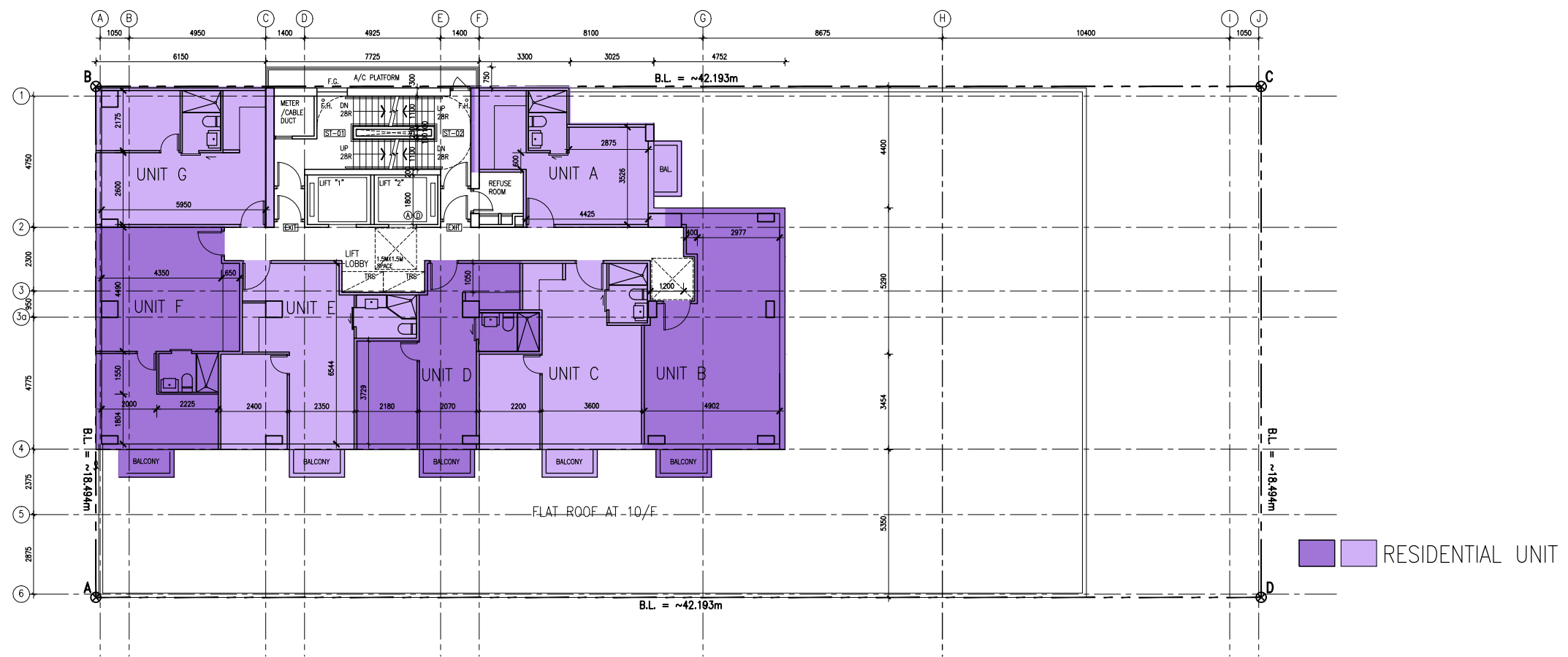
- This drawing and the contents are the copyright of I Consultants & Contracting Co. Ltd.
 - No part of the drawing and the design contained herein may be reproduced without the prior written consent of a director of I Consultants & Contracting Co. Ltd.
 - Do not take measurements directly from this drawing.
 - Check and verify all dimensions on site.
 - Read this drawing in conjunction with the specifications and all other related drawings.
 - Notify the Architect immediately of any discrepancy found herein.



9/F LAYOUT PLAN (OFFICE & BOH FOR RCHE)

Rev.	Date	Description
Project Name:		
Redevelopment of Yuen Long Theatre at Lot No. 3678 in D.D. 120, Yuen Long, N.T.		
Planning Consultant : DeSPACE (International) Limited		
Architect : I Consultants & Contracting Company Limited		
Traffic Consultant : CTA Consultants Limited		
Environmental Consultant : BeeXergy Consulting Limited		
Structural and Geotechnical Engineer : S. T. Wong & Partners Limited		
Drawing Title:		
9/F LAYOUT PLAN		
Designed by: JODY		
Drawn by: JODY		
Checked by: CAL.		
Scale: 1 : 200	Paper: A3	
Drawing Number		Revision Letter
GBP008		

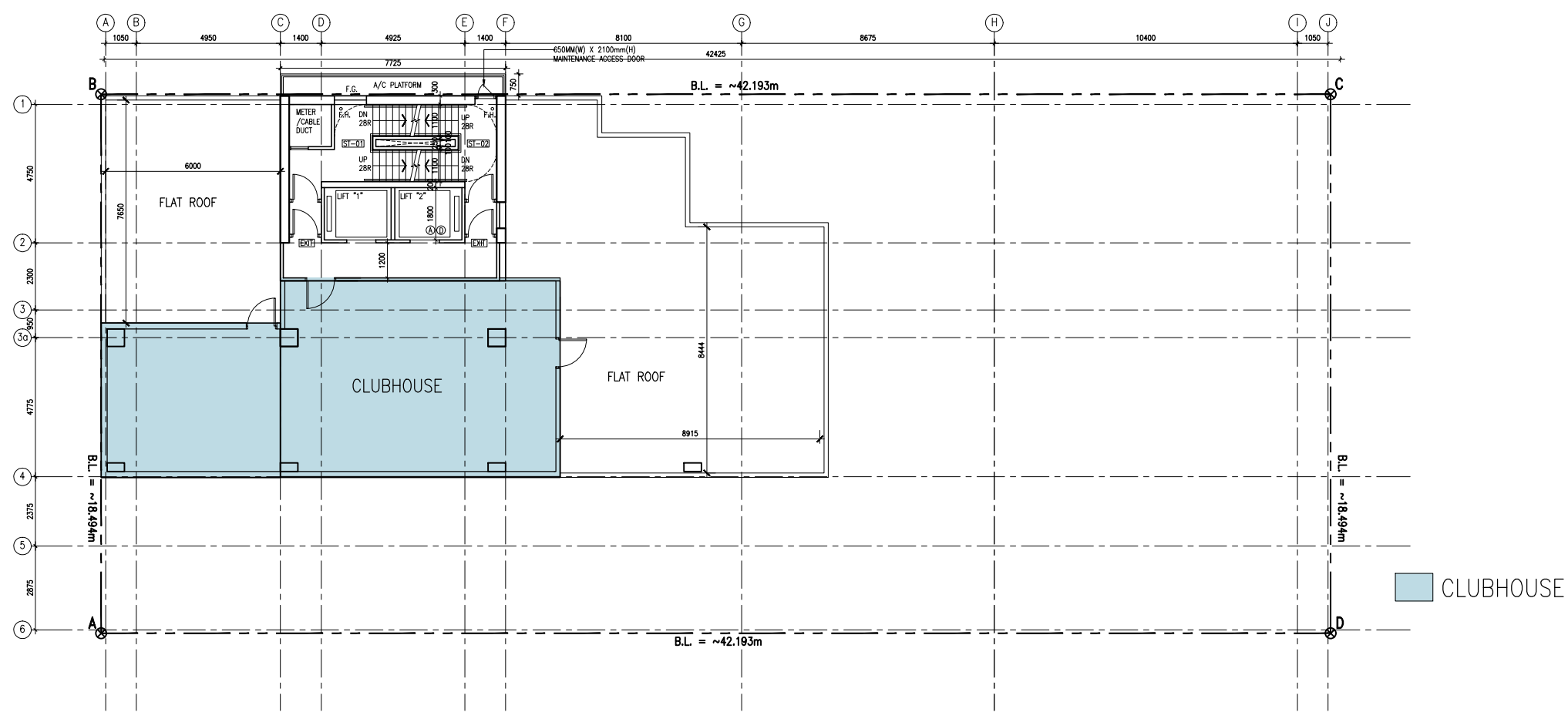
- This drawing and the contents are the copyright of I Consultants & Contracting Co. Ltd.
 - No part of the drawing and the design contained herein may be reproduced without the prior written consent of a director of I Consultants & Contracting Co. Ltd.
 - Do not take measurements directly from this drawing.
 - Check and verify all dimensions on site.
 - Read this drawing in conjunction with the specifications and all other related drawings.
 - Notify the Architect immediately of any discrepancy found herein.



10/F TO 19/F LAYOUT PLAN

Rev.	Date	Description
Project Name: Redevelopment of Yuen Long Theatre at Lot No. 3678 in D.D. 120, Yuen Long, N.T.		
Planning Consultant : DeSPACE (International) Limited		
Architect : I Consultants & Contracting Company Limited		
Traffic Consultant : CTA Consultants Limited		
Environmental Consultant : BeeXergy Consulting Limited		
Structural and Geotechnical Engineer : S. T. Wong & Partners Limited		
Drawing Title: 10/F TO 19/F LAYOUT PLAN		
Designed by: JODY		Drawn by: JODY
Checked by: CAL.		Scale: 1 : 200
Drawing Number: GBP009		Paper: A3
		Revision Letter

- This drawing and the contents are the copyright of I Consultants & Contracting Co. Ltd.
 - No part of the drawing and the design contained herein may be reproduced without the prior written consent of a director of I Consultants & Contracting Co. Ltd.
 - Do not take measurements directly from this drawing.
 - Check and verify all dimensions on site.
 - Read this drawing in conjunction with the specifications and all other related drawings.
 - Notify the Architect immediately of any discrepancy found herein.



20/F (CLUBHOUSE) LAYOUT PLAN

Rev.	Date	Description
------	------	-------------

Project Name:
 Redevelopment of
 Yuen Long Theatre
 at Lot No. 3678 in
 D.D. 120, Yuen Long, N.T.

Planning Consultant :
 DeSPACE (International) Limited

Architect :
 I Consultants & Contracting Company Limited

Traffic Consultant :
 CTA Consultants Limited

Environmental Consultant :
 BeeXergy Consulting Limited

Structural and Geotechnical Engineer :
 S. T. Wong & Partners Limited

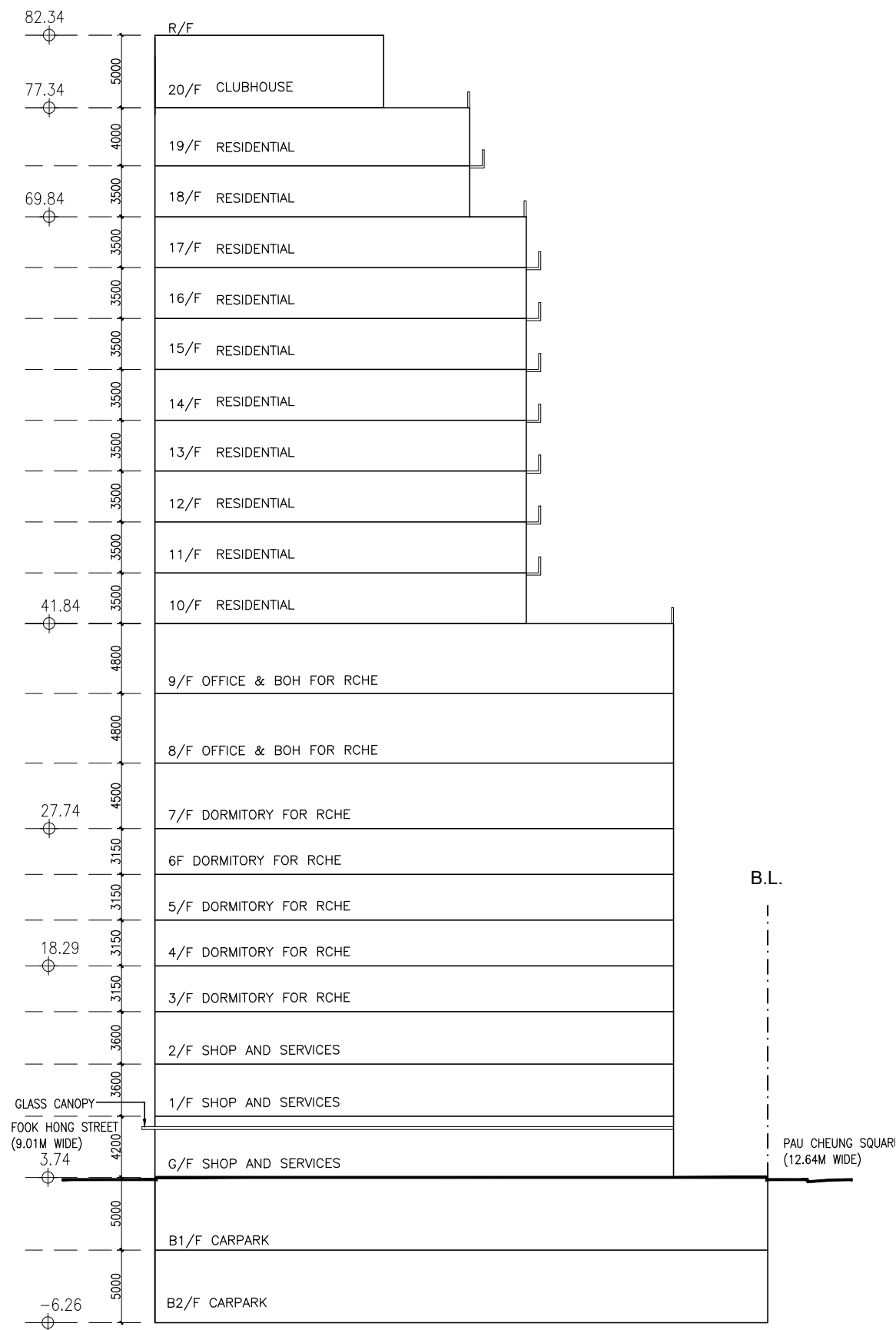
Drawing Title:
 20/F (CLUBHOUSE)
 LAYOUT PLAN

Designed by: JODY
 Drawn by: JODY
 Checked by: CAL.

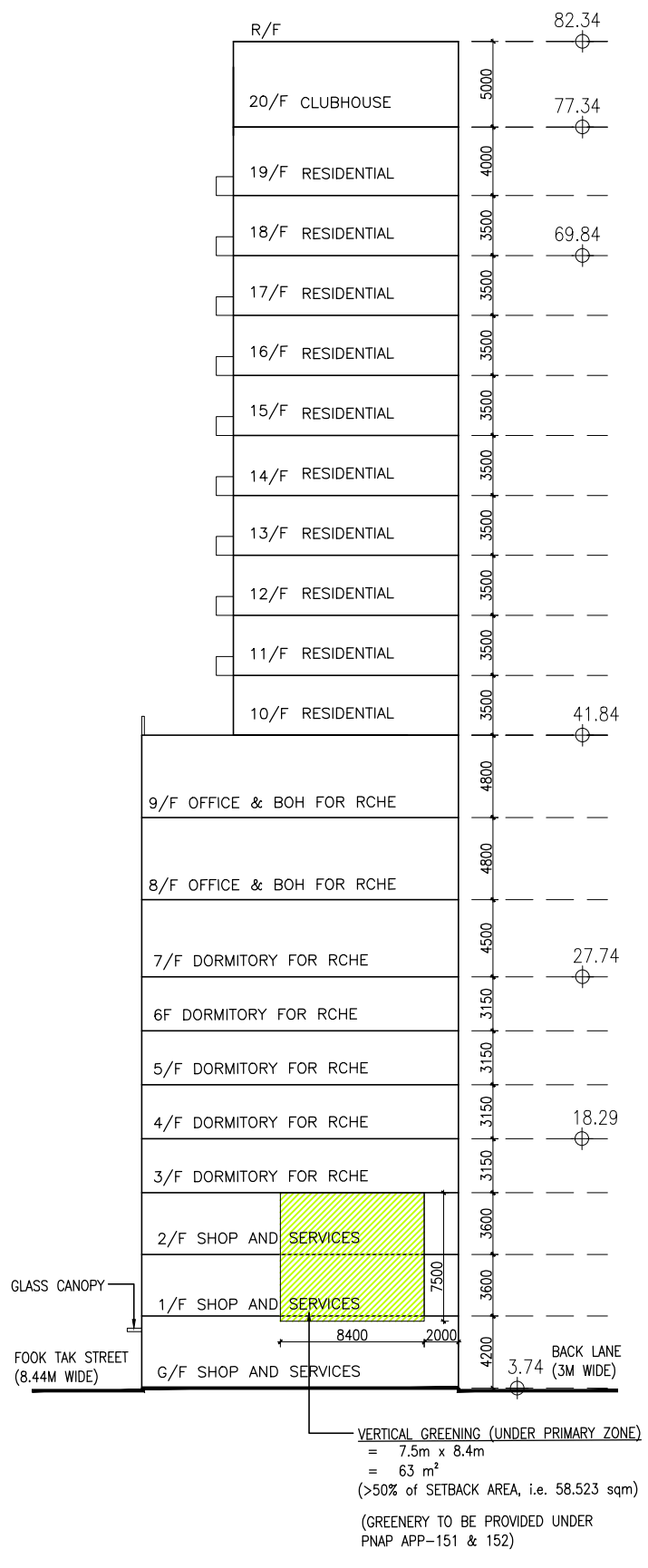
Scale: 1 : 200 Paper: A3

Drawing Number: GBP011

- This drawing and the contents are the copyright of I Consultants & Contracting Co. Ltd.
 - No part of the drawing and the design contained herein may be reproduced without the prior written consent of a director of I Consultants & Contracting Co. Ltd.
 - Do not take measurements directly from this drawing.
 - Check and verify all dimensions on site.
 - Read this drawing in conjunction with the specifications and all other related drawings.
 - Notify the Architect immediately of any discrepancy found herein.



**SCHEMATIC SECTION
(FACING FOOK TAK STREET)**



**SCHEMATIC ELEVATION
(FACING PAU CHEUNG SQUARE)**

Rev.	Date	Description
Project Name:		
Redevelopment of Yuen Long Theatre at Lot No. 3678 in D.D. 120, Yuen Long, N.T.		
Planning Consultant : DeSPACE (International) Limited		
Architect : I Consultants & Contracting Company Limited		
Traffic Consultant : CTA Consultants Limited		
Environmental Consultant : BeeKergy Consulting Limited		
Structural and Geotechnical Engineer : S. T. Wong & Partners Limited		
Drawing Title:		
SCHEMATIC SECTION AND ELEVATION		
Designed by: JODY		Revision Letter
Drawn by: JODY		
Checked by: CAL.		
Scale: 1 : 400	Paper: A3	
Drawing Number: GBP013		